

ARMIMI I SOLETAVE RAKORDUESE SH 1:75

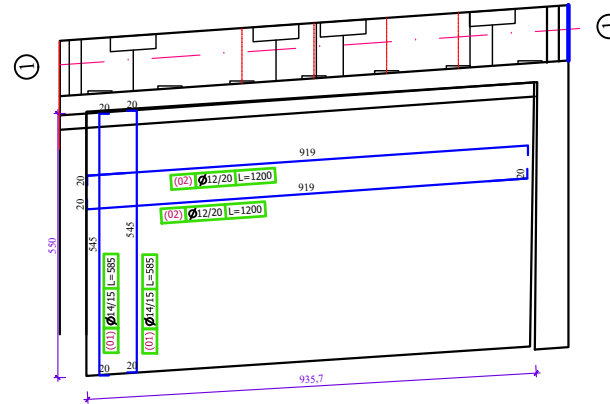


TABELA E SPECIFIKIMIT TE HEKURIT PER SOLETAT RAKORDUESE TE URES

POZICIONI	DIAMETRI Φ (mm)	GJATESIA L (cm)	Cope	GJATESIA Ltotal (m)	TOTALE			
					DIAMETRI RI Φ (mm)	Ltot (m)	Pesha/ml	Pesha (kg)
1	14	600	162	972.0				
2	12	1200	60	720.0	10	192.00	0.617	118.46
3	12	100	60	60.0	12	780.00	0.888	692.64
4	14	120	81	97.2	14	1,069.20	1.210	1,293.73
5	10	160	120	192.0				
TOTALE /2 SOLETAT RAKORDUESE (kg)								4,209.67

TABELA E VOLUMIT TE BETONIT PER SOLETAT RAKORDUESE TE URES

NR	BETON	ELEMENTI	SIPERFAQJA m ²	SASIA Cope	GJATESIA (Spesori) m	VOLUMI
						(total) m ³
1	C25/30	Soletat rakorduese	51	1	0.30	15.30
TOTALE C25/30						15.30
TOTALE C25/30 PER 2 SOLETA RAKORDUESE						30.60
1	C7/10	Poshte soletave rakorduese	53	1	0.05	2.65
TOTALE C7/10						2.65
TOTALE C7/10 PER 2 SOLETA RAKORDUESE						5.30