

ARMIMI I SOLETES SE URES
SH 1:75

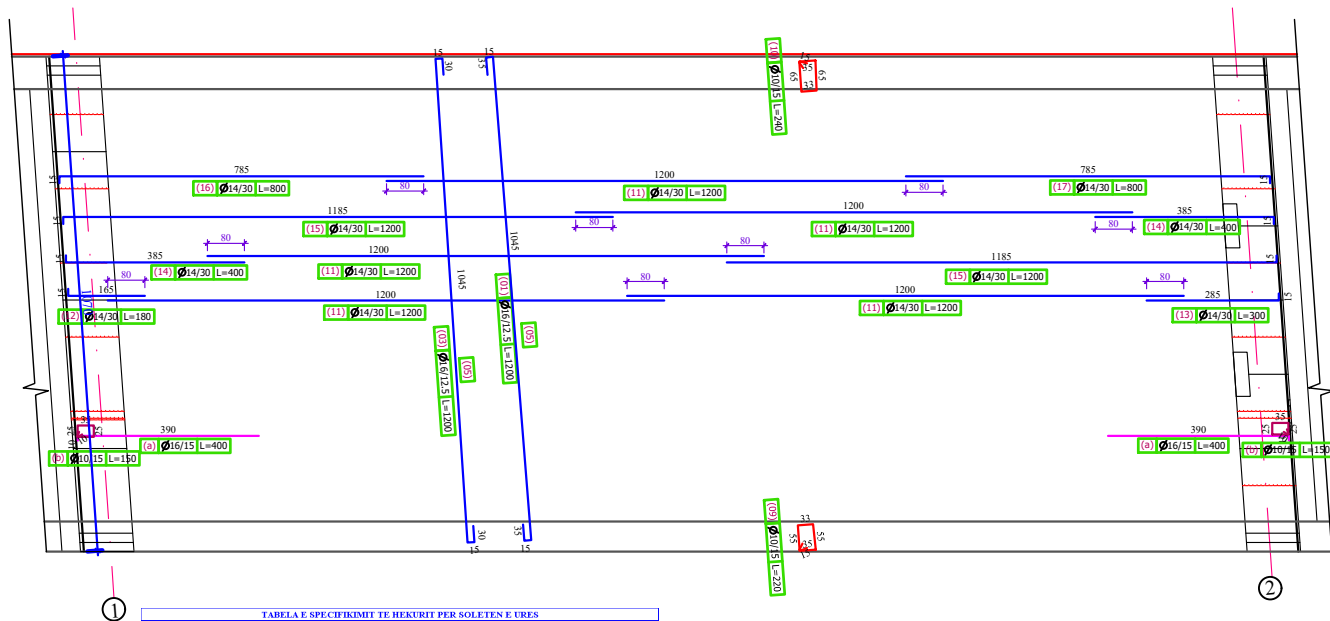


TABELA E SPECIFIKIMIT TE HIRKURIT PER SOLETEN E URES

ARMIMI I SOLETES	POZICIONI	DIAMETRI Ø (mm)	GJATESIA L (cm)	COPE	GJATESIA Ltotal (m)	TOTAL			
						DIAMETRI Ø (mm)	Ltotal (m)	Peshat (kg)	Peshat (kg)
1	16	1200	210	-	2,520.0	8	-	0.395	-
5	16	1200	210	-	2,520.0	10	895.0	0.617	496.69
9	10	220	175	-	385.0	12	276.0	0.888	245.09
10	10	240	175	-	420.0	14	11,161.6	12.210	13,595.54
11	14	1200	480	-	5,856.0	16	5,776.0	1.500	9,126.09
12	14	180	92	-	165.6	18	-	2.000	-
13	14	300	92	-	276.0	20	-	2.470	-
14	14	400	198	-	792.0	22	-	2.980	-
15	14	1200	198	-	2,376.0	24	-	3.850	-
16	14	800	212	-	1,696.0	28	-	4.830	-
a	16	400	184	-	736.0	30	-	5.550	-
b	12	150	184	-	276.0	32	-	6.310	-
TOTAL (kg) I SOLETE									23,873.99

TABELA E VOLUMIT TE BETONIT PER SOLETEN MBI URE

NBR	BETON	ELEMENTI	SIPERFAQJA	SASIA	GJATESIA (Spesori)	VOLUMI (total)
	Klasa		m ²	Cope	m	m ³
1	C35/45	SOLATA MBI URE	283.16	1	0.26	74.19
TOTALE C35/45						74.19
TOTALE C35/45 PER 1 SOLET						74.19