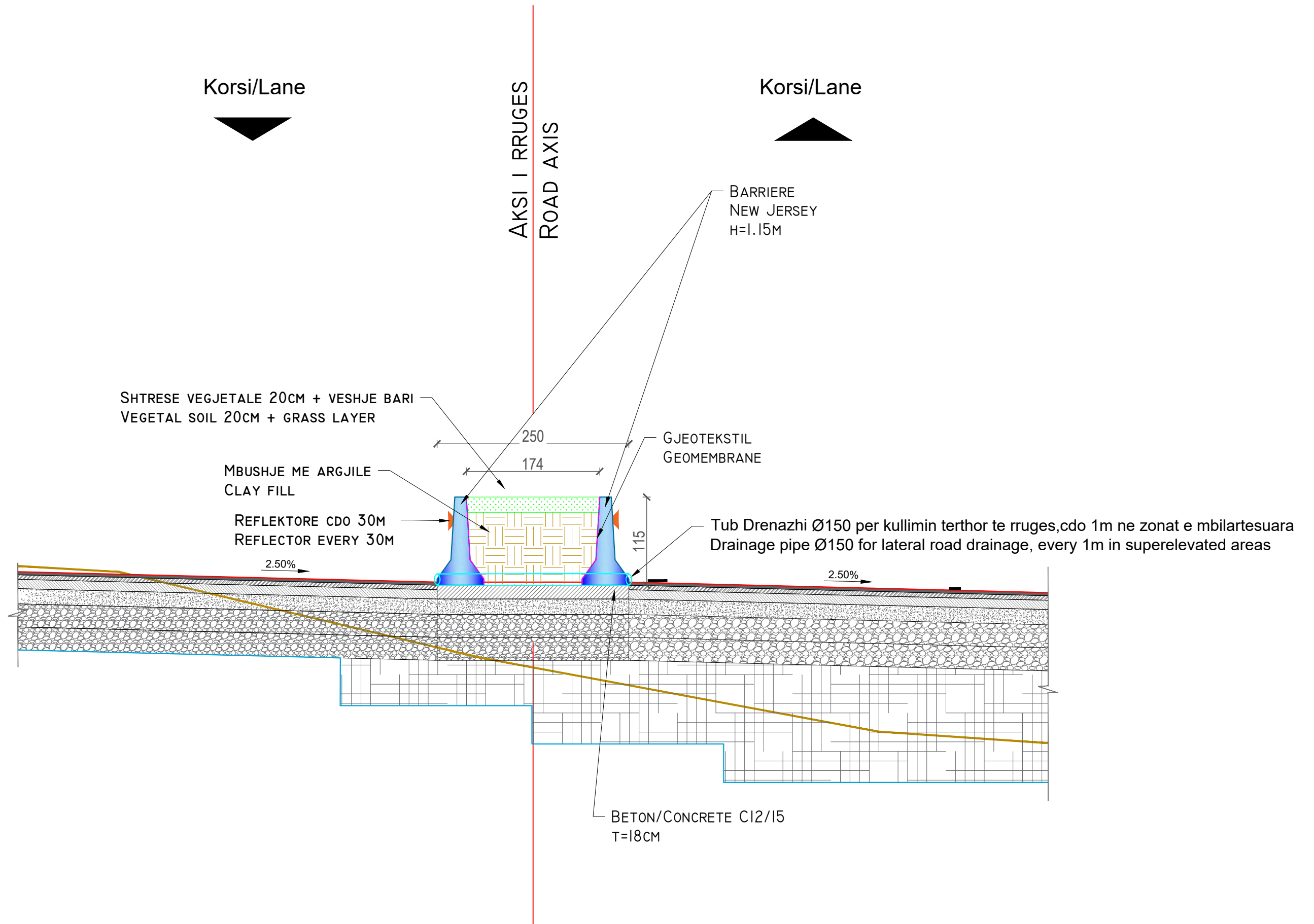


Bordure betoni e parafabrikuar
 Prefabricated concrete curb
 15x30cm

Kunete Betoni
 Concrete gutter
 C20/25



INVESTITORI / INVESTOR
"Autoriteti Rrugor Shqiptar"

Address: Rr. "Sami Frasher", Nr 33, Tirane

Mob: 04 222 3600
 E-mail: info@arsh.gov.al



JV: "InfraKonsult" shpk & "HMK-Consulting" shpk



"Studim Projektim - Zgjerimi i segmentit rrugor
 dalje Elbasan-Prenjas-Qafe Thane", (Faza VIII) /
 "Design Study of road segment exit
 Elbasan-Prenjas-Qafe Thane" (Phase VIII)

Detaj/Detail "New Jersey"

FAZA - PROJEKT ZBATIM
 PHASE - DETAIL DESIGN

SHKALLA
 SCALE 1:50

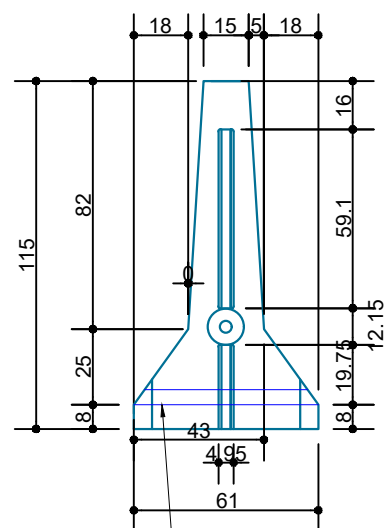
Data: Tiranë 2023

VIZATIMI Nr:
 PAGE No: 1(d). (2)

PROJEKTUES:
 DESIGN ENGINEERS:

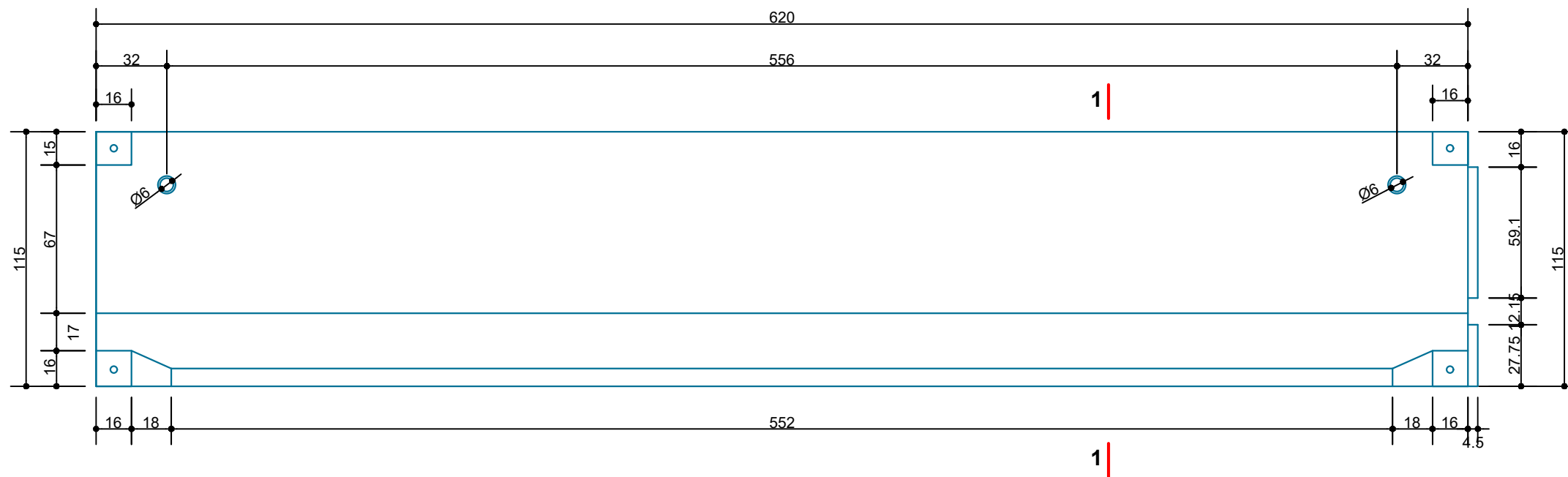
Ing./Eng. Sokol METOJA
 Ing./Eng. Redi STRUGA
 Ing./Eng. Orgest MERTIKA

Prerje/Section 1-1

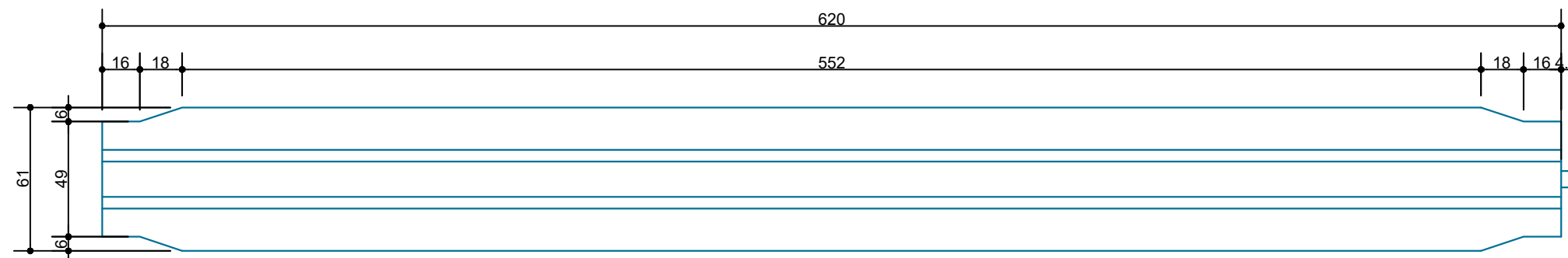


Bira Kullimi Ø40mm
Drainage holes Ø40mm

Pamje anesore
Side view



Planimetria
Planview



INVESTITORI / INVESTOR
"Autoriteti Rrugor Shqiptar"

Address: Rr. "Sami Frasher", Nr 33, Tirane
Mob: 04 222 3600
E-mail: info@arsh.gov.al



JV: "InfraKonsult" shpk & "HMK-Consulting" shpk



"Studim Projektim - Zgjerimi i segmentit rrugor
dalje Elbasan-Prenjas-Qafe Thane", (Faza VIII) /
"Design Study of road segment exit
Elbasan-Prenjas-Qafe Thane" (Phase VIII)

Detaj/Detail "New Jersey"

FAZA - PROJEKT ZBATIM
PHASE - DETAIL DESIGN

SHKALLA
SCALE

1:25

Data: Tiranë 2023

VIZATIMI Nr:

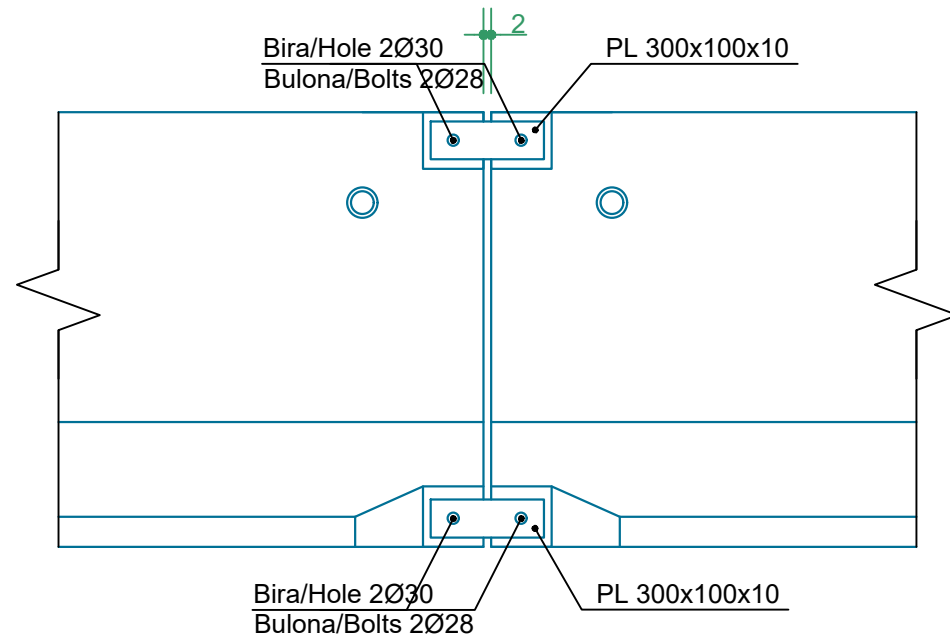
l(d). (3)

PAGE No:

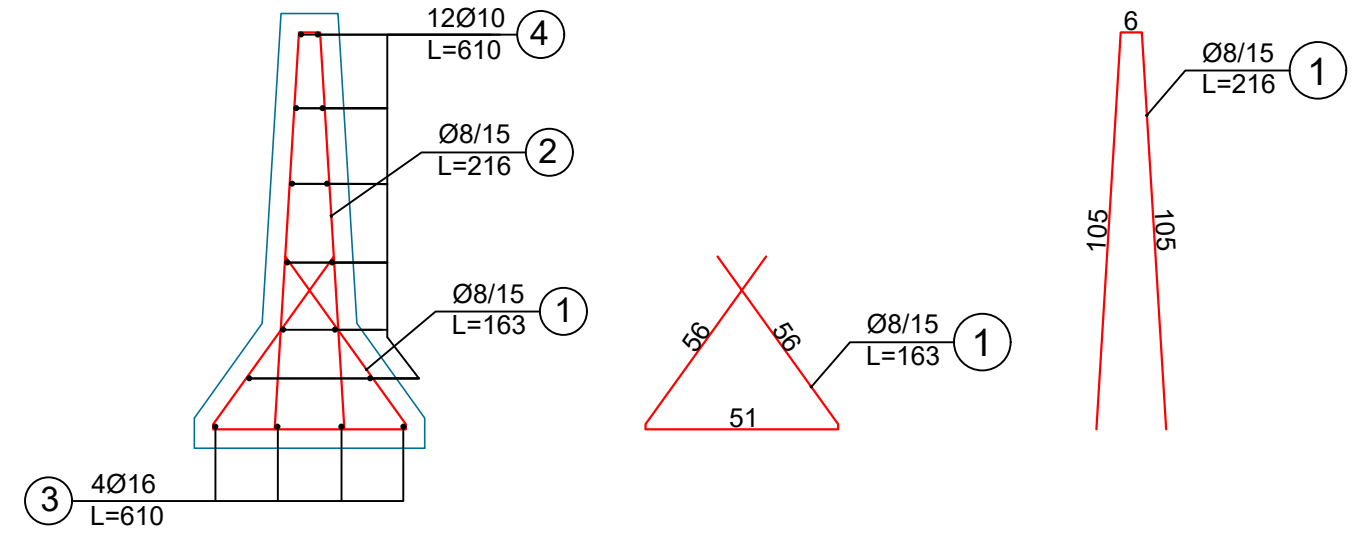
PROJEKTUES:
DESIGN ENGINEERS:

Ing./Eng. Sokol METOJA
Ing./Eng. Redi STRUGA
Ing./Eng. Orgest MERTIKA

Detaji i ankorimit/Anchor detail



Armimi/Reinforcement



Elementi: New Jersey me lartesi 1.15m dhe gjatesi 6.2m						
Pos	cope	Ø (mm)	L (cm)	Gjatesia totale/Total Length (m)	Pesha njesi/Unit Weight (kg/m)	Pesha/Weight (kg)
1	42	8	163	68.46	0.394	27
2	42	8	216	90.72	0.394	36
3	4	16	610	24.40	1.578	38
4	12	10	610	73.20	0.616	45
Shuma per 1 cope/Sum for 1pcs (kg)						146
Vellim betoni per 1 copë/Concrete volume for 1 pcs(m3)						2.0

SHËNIME TEKNIKE PËR NEW JERSEY :

- Klasa e betonit e përdorur për elementet betonarme të jetë C25/30 (fck=25 N/mm²).
- Çeliku i përdorur të jetë i klasës B500C ose ekuivalent me rezistencë rrjedhshmërie fyk=500MPa (500 N/mm²).
- Shtresa mbrojtëse të jetë 50mm.

TECHNICAL NOTES FOR NEW JERSEY:

- The grade of concrete used for reinforced concrete elements should be C25/30 (fck=25 N/mm²).
- The steel used must be of class B500C or equivalent with yield strength fyk=500MPa (500 N/mm²).
- The protective layer should be 50 mm.



INVESTITORI / INVESTOR
"Autoriteti Rrugor Shqiptar"

Address: Rr. "Sami Frasheri", Nr 33, Tirane

Mob: 04 222 3600
 E-mail: info@arsh.gov.al



JV: "InfraKonsult" shpk & "HMK-Consulting" shpk



"Studim Projektim - Zgjerimi i segmentit rrugor dalje Elbasan-Prenjas-Qafe Thane", (Faza VIII) / "Design Study of road segment exit Elbasan-Prenjas-Qafe Thane" (Phase VIII)

Detaj/Detail "New Jersey"

FAZA - PROJEKT ZBATIM
 PHASE - DETAIL DESIGN

SHKALLA
 SCALE 1:20

Data: Tiranë 2023

VIZATIMI Nr:
 PAGE No: I(d). (4)

PROJEKTUES:
 DESIGN ENGINEERS:

Ing./Eng. Sokol METOJA
 Ing./Eng. Redi STRUGA
 Ing./Eng. Orgest MËRTIKA