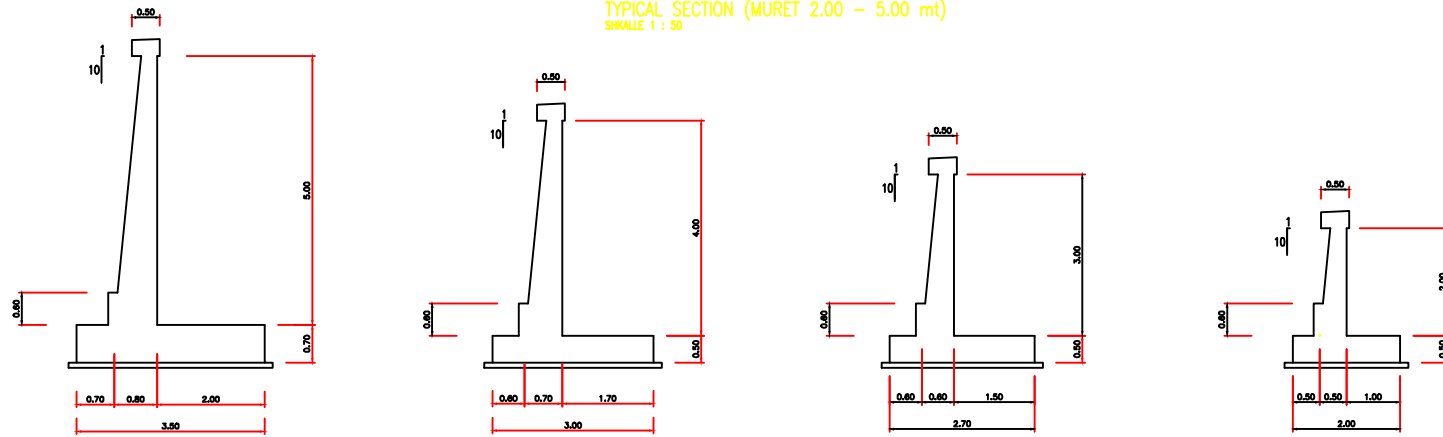


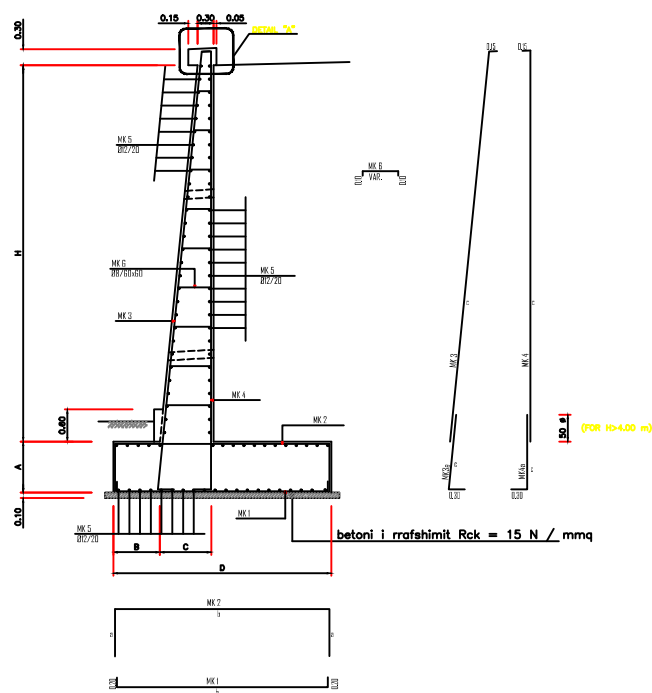
Mure mbajtese tip "C"

THEMELET
TYPICAL SECTION (MURET 2.00 - 5.00 mt)
SHKALLE 1 : 50



REINFORCEMENT

SCALA 1 : 50

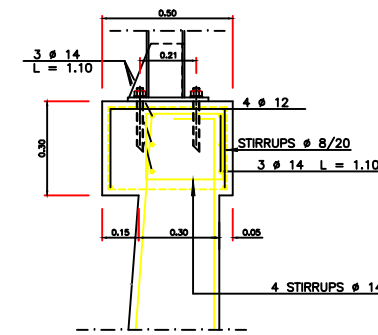


DIMENSIONET

H	A	B	C	D	E
2.00	0.50	0.50	0.50	2.00	1.00
3.00	0.50	0.60	0.60	2.70	1.50
4.00	0.50	0.60	0.70	3.00	1.70
5.00	0.70	0.70	0.80	3.50	2.00

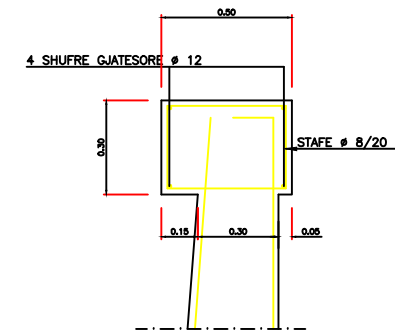
DETAILS "A" (ME BARRIERE)

SHKALLE 1 : 10



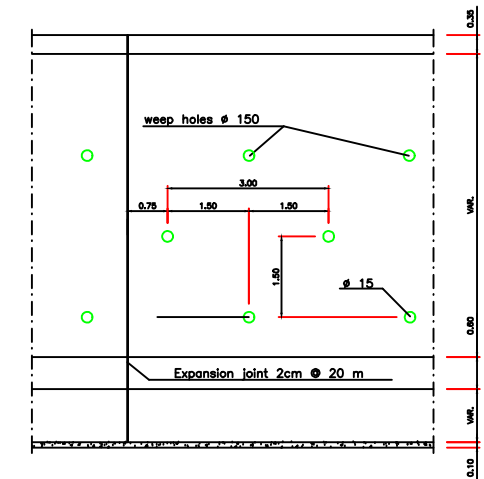
DETAILS "A"

SCALE 1 : 10



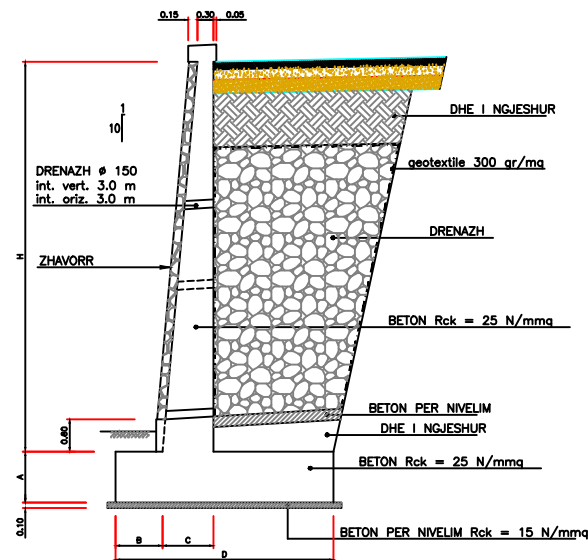
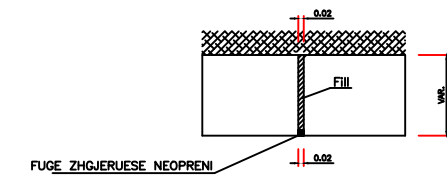
DETALJ I DRENAZHIT

SCALE 1 : 50



DETALJ I FUGES SE BASHKIMIT

SCALE 1 : 10



SHENIME

MATERIALET:

- Klasa betoni Rck 250 Kg / cm² për mure dhe themelet
- klasë betoni Rck 150 Kg / cm² për rrafshimin e betonit
- çeliku tip FE B44k $\sigma = 2600 \text{ Kg/cm}^2$
- themelet janë projektuar për një kapacitet të lejuar të tokës prej 20 T / m

Sasi të vlerësuara për 1.00ML

WALL H	CONCRETE Rck = 25 N/mm² m³	CONCRETE Rck = 15 N/mm² m³	REINFORCEMENT Kg			
			Ø 14	Ø 12	Ø 8	Ø 10
2.00	1.65	0.20	1	85	-	-
3.00	3.65	0.27	2	84	-	-
4.00	5.00	0.33	3	85	88	-
5.00	6.50	0.35	4	80	78	80

ARMIMET

MK	H = 2.00						H = 3.00						H = 4.00						H = 5.00											
	Ø	SPAZH	DIMENSIONET			LËNTHI	Ø	SPAZH	DIMENSIONET			LËNTHI	Ø	SPAZH	DIMENSIONET			LËNTHI	Ø	SPAZH	DIMENSIONET			LËNTHI						
			a	b	c				a	b	c				a	b	c				a	b	c							
1	Ø 12	0.20	-	-	-	2.00	Ø 12	0.20	-	-	-	3.00	Ø 12	0.20	-	-	-	4.00	Ø 12	0.20	-	-	-	5.00	Ø 12	0.20	-	-	-	6.00
2	Ø 12	0.20	0.40	0.40	-	2.20	Ø 12	0.20	0.40	0.40	-	2.40	Ø 12	0.20	0.40	0.40	-	2.60	Ø 12	0.20	0.40	0.40	-	2.80	Ø 12	0.20	0.40	0.40	-	3.00
3	Ø 12	0.20	-	-	-	3.00	Ø 12	0.20	-	-	-	3.00	Ø 12	0.20	-	-	-	4.00	Ø 12	0.20	-	-	-	4.00	Ø 12	0.20	-	-	-	4.00
3a	-	-	-	-	-	-	-	-	-	-	-	-	-	-	-	-	-	-	Ø 12	0.20	-	-	-	1.00	Ø 12	0.20	-	-	-	1.00
4	Ø 12	0.20	-	-	-	3.00	Ø 12	0.20	-	-	-	3.00	Ø 12	0.20	-	-	-	4.00	Ø 12	0.20	-	-	-	4.00	Ø 12	0.20	-	-	-	4.00
4a	-	-	-	-	-	-	-	-	-	-	-	-	-	-	-	-	-	-	Ø 12	0.20	-	-	-	1.00	Ø 12	0.20	-	-	-	1.00
5	Ø 12	0.20	-	-	-	4.00	Ø 12	0.20	-	-	-	4.00	Ø 12	0.20	-	-	-	5.00	Ø 12	0.20	-	-	-	5.00	Ø 12	0.20	-	-	-	5.00
6	Ø 12	0.20	-	-	-	5.00	Ø 12	0.20	-	-	-	5.00	Ø 12	0.20	-	-	-	6.00	Ø 12	0.20	-	-	-	6.00	Ø 12	0.20	-	-	-	6.00

* Average length



Projektues:
Geosat GROUP
STUDIO
DESIGN & SURVEY STUDIES
Adresa: Rruga "Ibrahim Rugova"
Kompleksi Green Park, Kulla 2, Ap 23
Tirana, Albania
Tel/Fax: 0355 069 2040469
Email: geosat-group@geosat-group.com

Projekti:
**PROJEKTI IRRUGES NACIONALE "SH8"
VLORE SARANDE
SEGMENTI: URA PALASES - DHERMI**

Titulli:
Dimensionime dhe armimi i mureve mbajtese dhe prites

FAZA: PERSHKRIMI:
PI
PZ

Emri: _____ Firma: _____

Punoi: _____
Kontrolloi: _____
Aprovi: _____

Format:
A 1 594x840

Date:
2020

DWG No.: DWG 0-7 Hydro F 00114 A1

Emri DWG: Tipe muresh.dwg

Faqe: 001
Km. 0+604

SHKALLA: