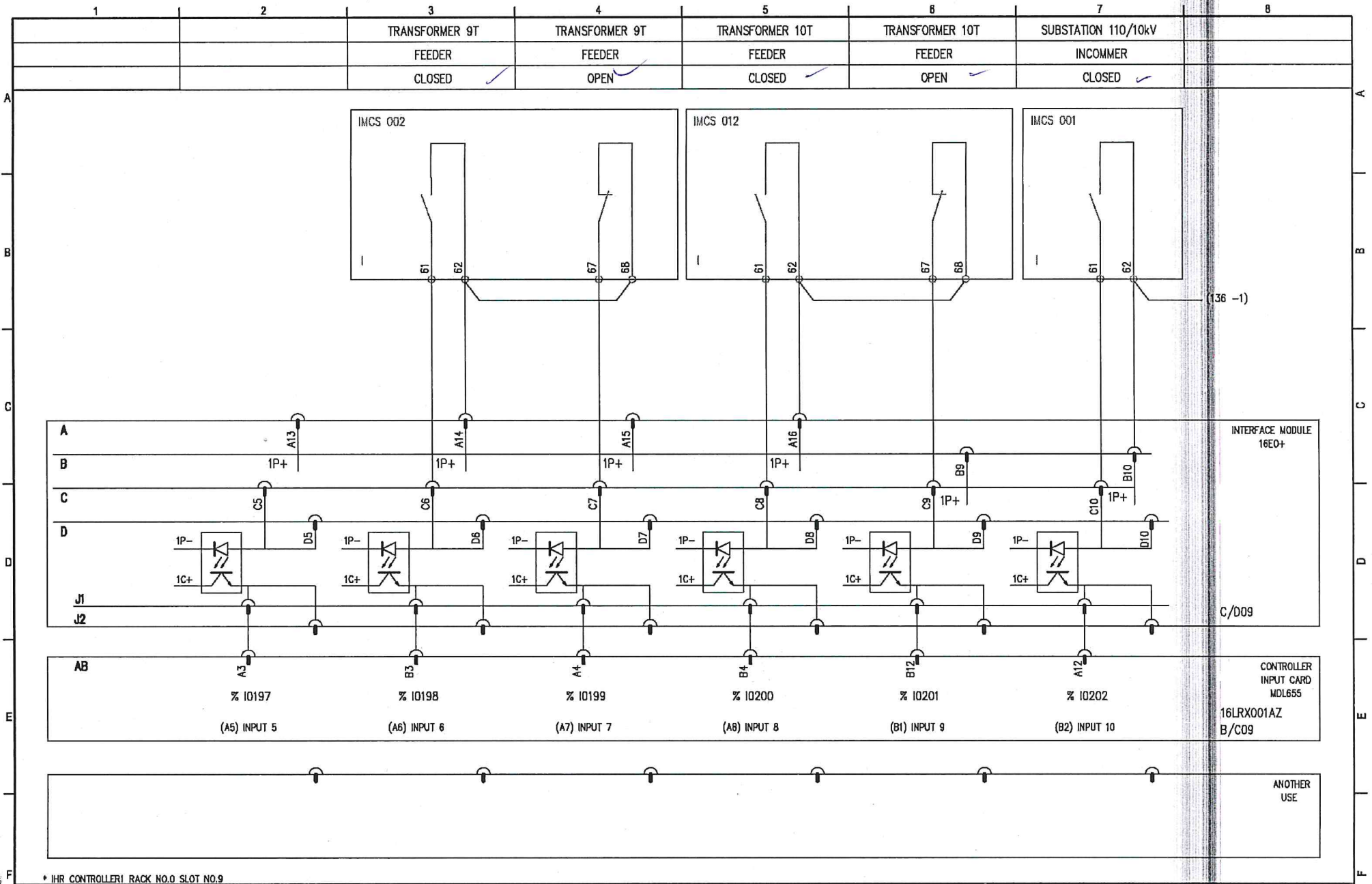


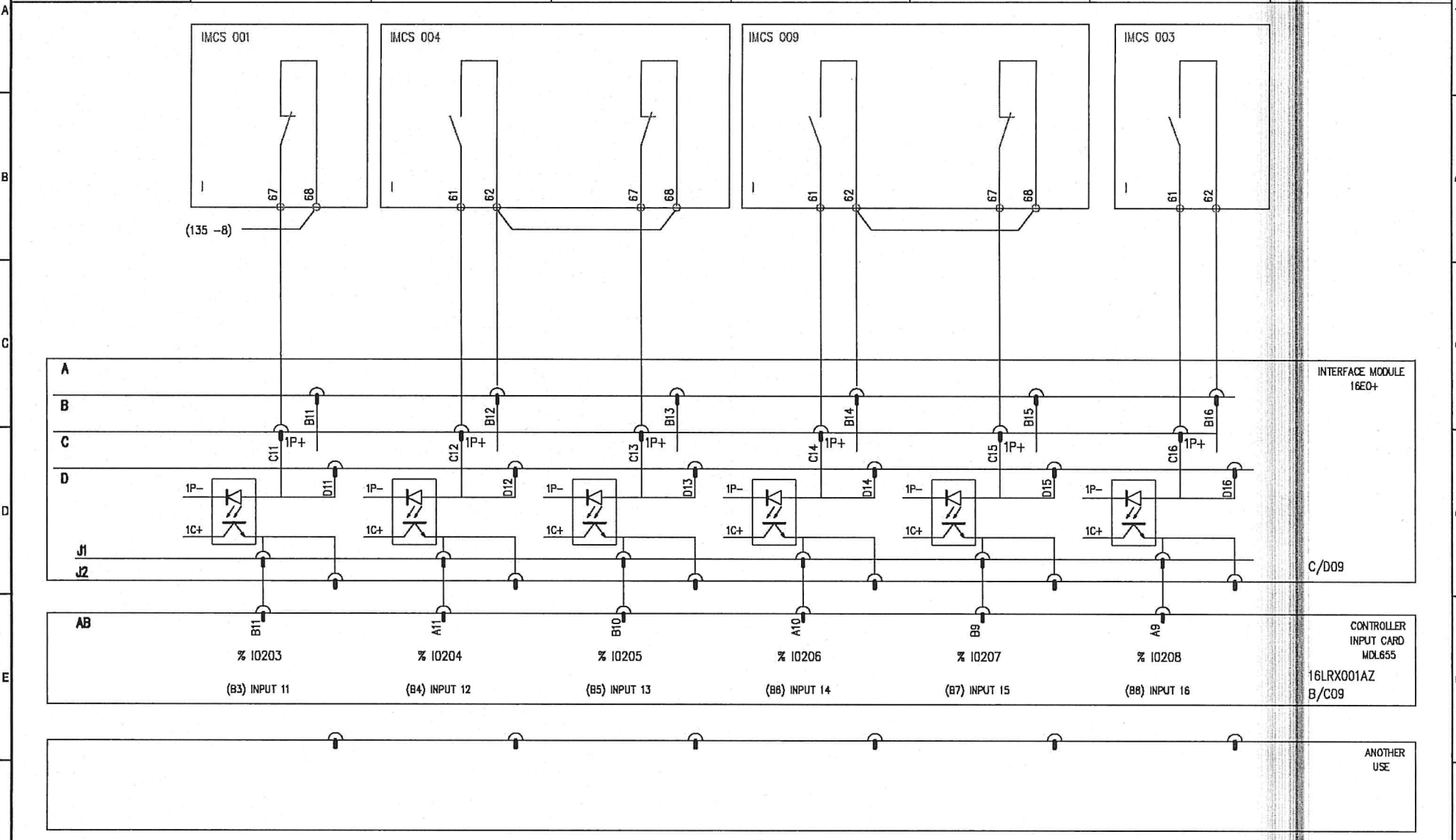
NOERFAQESIMI IMP 10KV FLERZ.



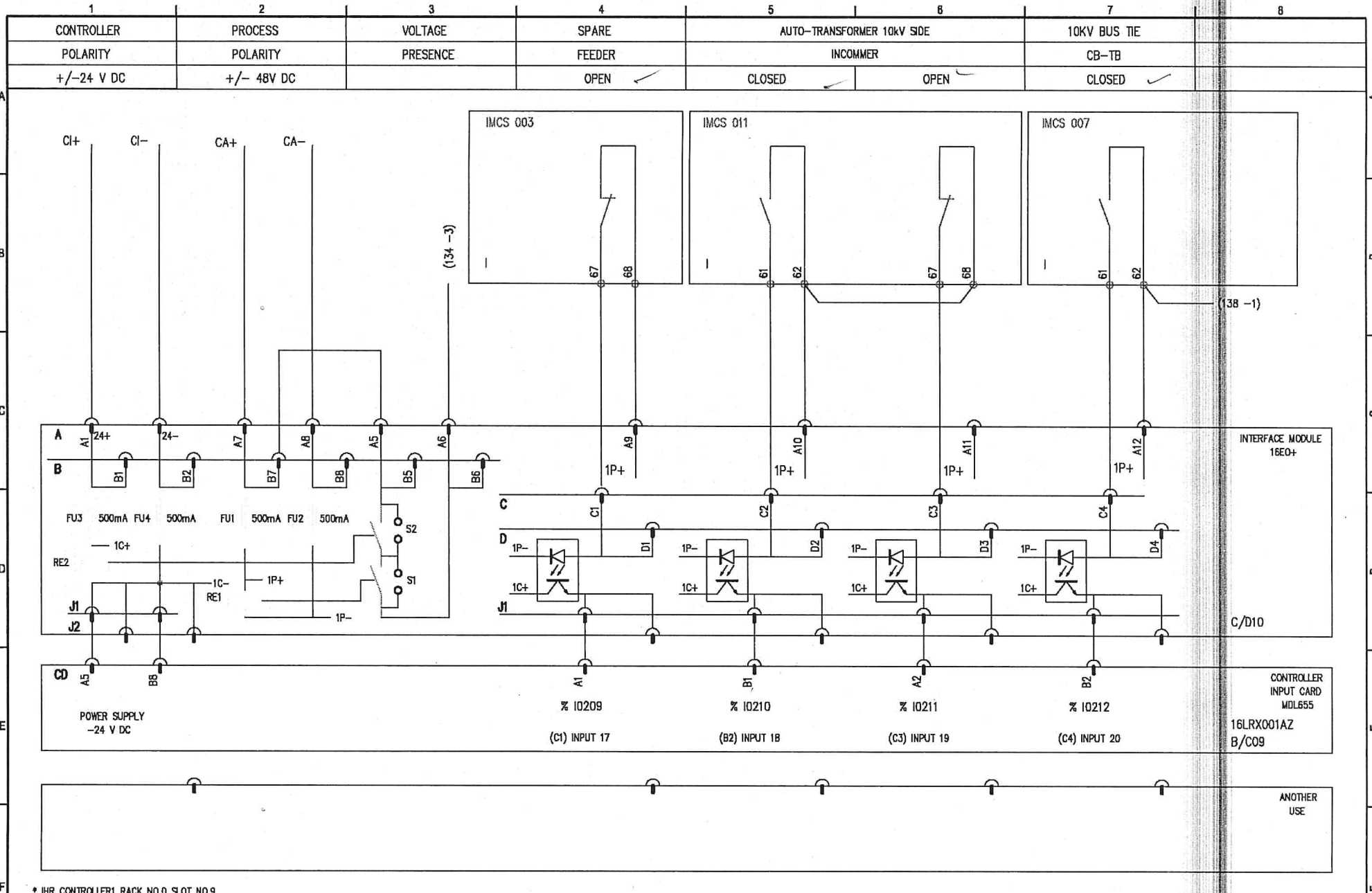
\* IHR CONTROLLER RACK NO.0 SLOT NO.9

16LRX	LOGIC INPUTS	M1017A30020	G	SHEET	SEE
				135	136

1	2	3	4	5	6	7	8
	STATION 110/10kV	TUNNEL TRANSFORMER 13T		STATION TRANSFORMER 11T		SPARE	
	INCOMMER	FEEDER		FEEDER		FEEDER	
	OPEN ✓	CLOSED ✓	OPEN ✓	CLOSED ✓	OPEN ✓	CLOSED ✓	

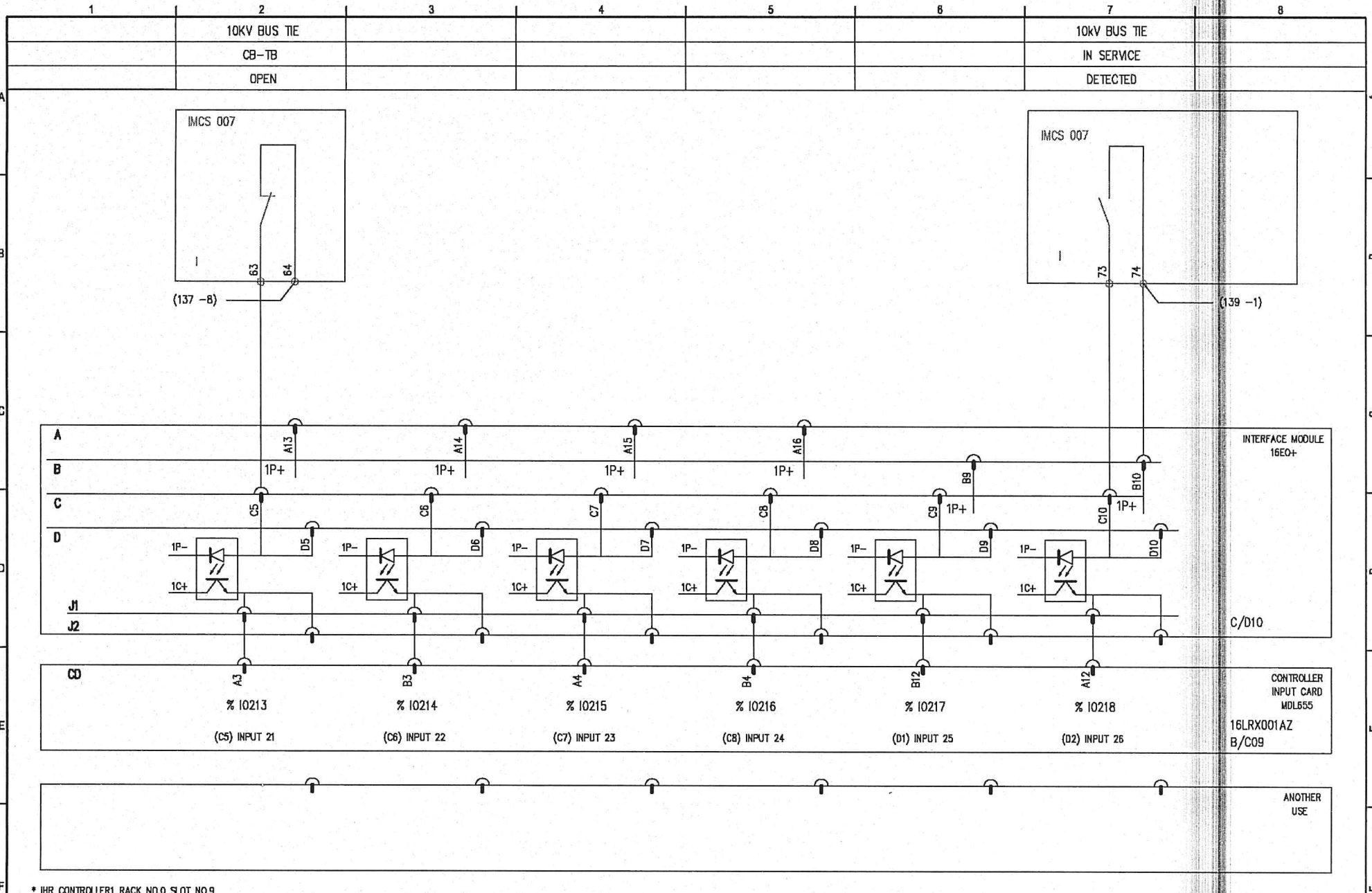


* IHR CONTROLLER1 RACK NO.0 SLOT NO.9		16LRX	LOGIC INPUTS	abcd	Power
		16LRX001AR		M1017A30020	G
				SHEET 136	SEE 137



\* IHR CONTROLLER1 RACK NO.0 SLOT NO.9

16LRX	LOGIC INPUTS	M1017A30020	G	SHEET 137	SEE 138
16LRX001AR					



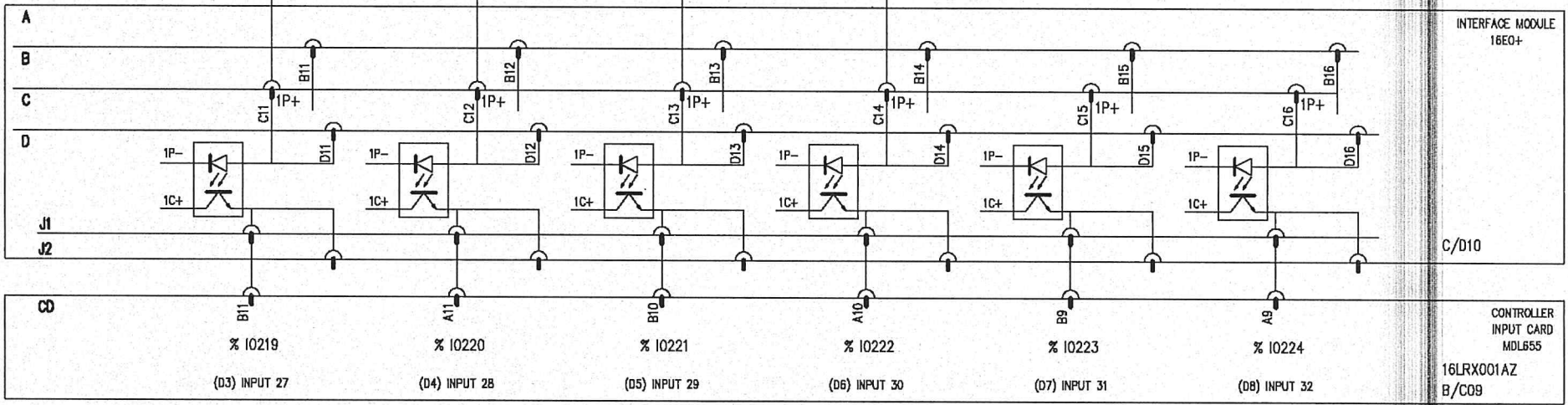
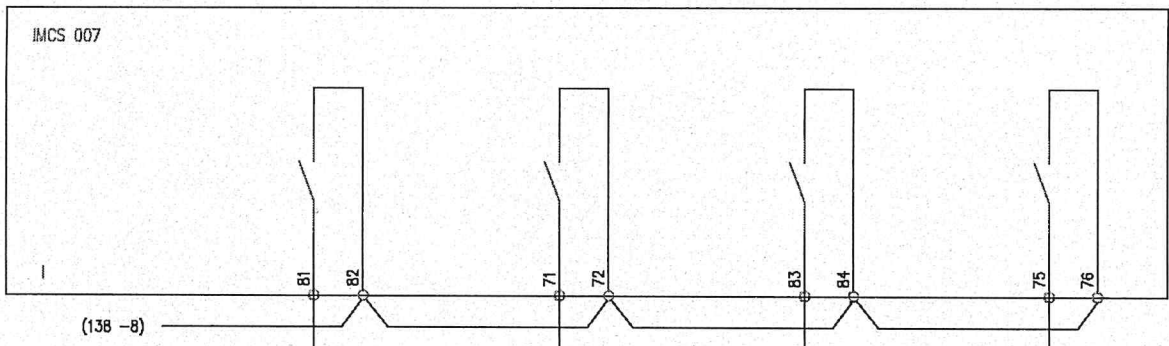
16LRX  
16LRX001AR

LOGIC INPUTS

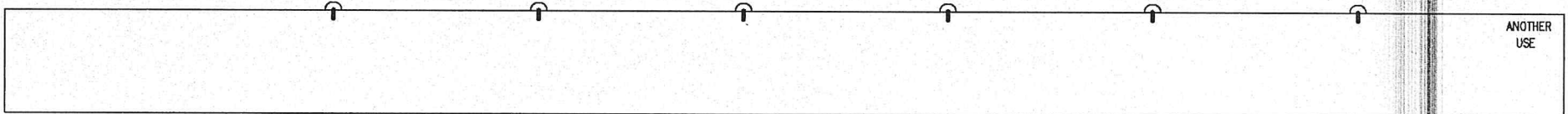
M1017A30020

G	SHEET 138	SEE 139
---	--------------	------------

1	2	3	4	5	6	7	8
	10kV BUS TIE	10kV BUS TIE	10kV BUS TIE	10kV BUS TIE			
	48V DC FAULT	TEST POSITION	220V DC FAULT	TIME DEL OVERCURRENT			
	DETECTED	DETECTED	DETECTED	DETECTED			



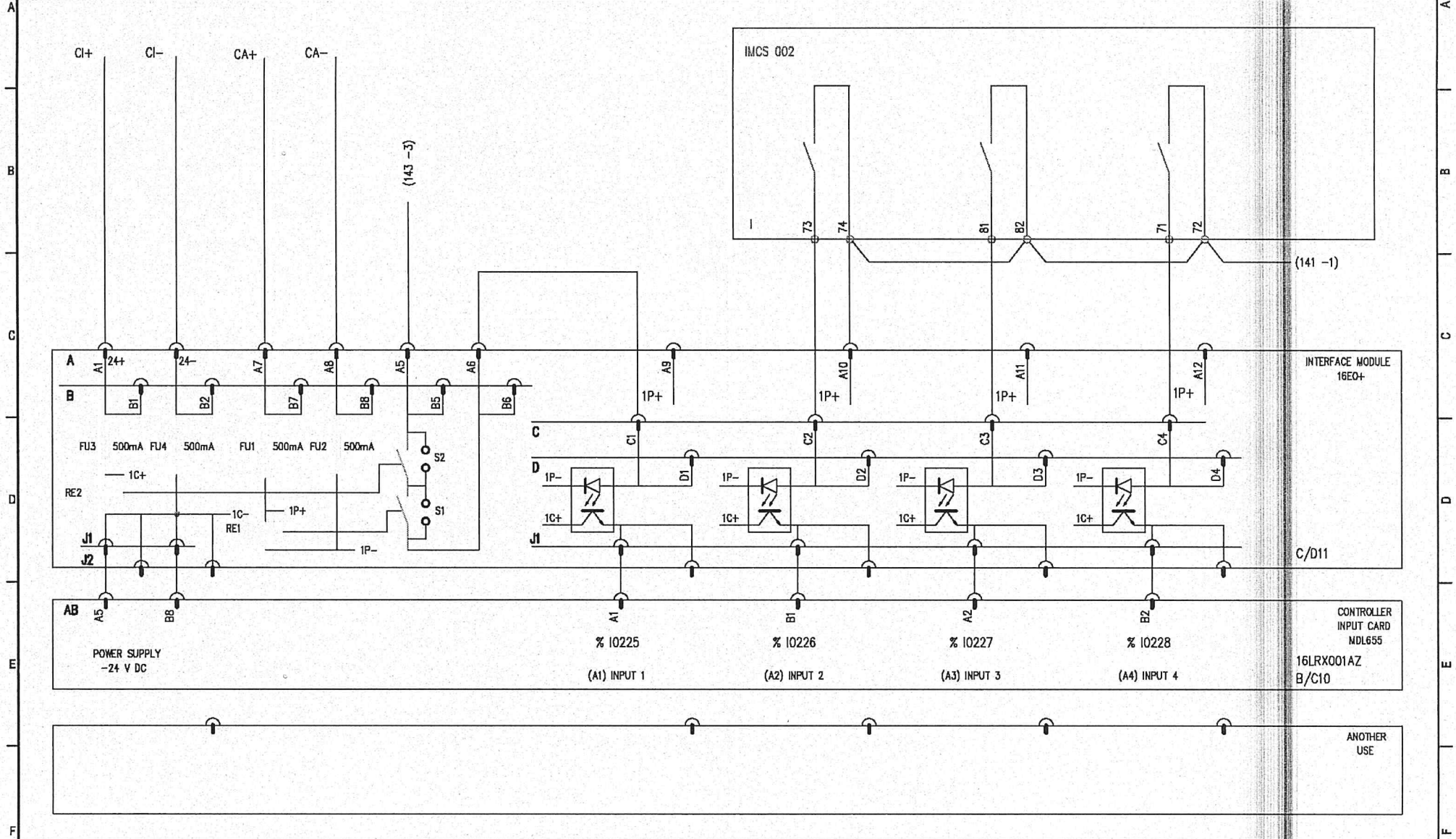
CD	B11	A11	B10	A10	B9	A9	
	% I0219	% I0220	% I0221	% I0222	% I0223	% I0224	
	(D3) INPUT 27	(D4) INPUT 28	(D5) INPUT 29	(D6) INPUT 30	(D7) INPUT 31	(D8) INPUT 32	



\* IHR CONTROLLER1 RACK NO.0 SLOT NO.9

16LRX	LOGIC INPUTS	Power
16LRX001AR		
		M1017A30020 G
		SHEET 139
		SEE 140

1	2	3	4	5	6	7	8
CONTROLLER	PROCESS	VOLTAGE	RACK 0 SLOT 10	10KV CB 9T	10KV CB 9T	10KV CB 9T	
POLARITY	POLARITY	PRESENCE	INPUT VALIDATION	IN SERVICE	48V DC FAULT	TEST POSITION	
+/-24 V DC	+/- 48V DC		PRESENCE	DETECTED	DETECTED	DETECTED	



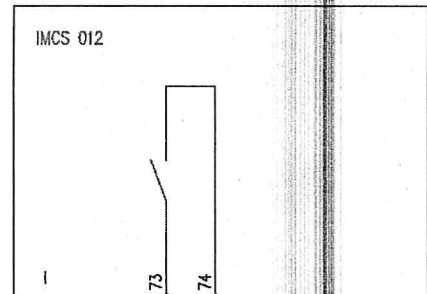
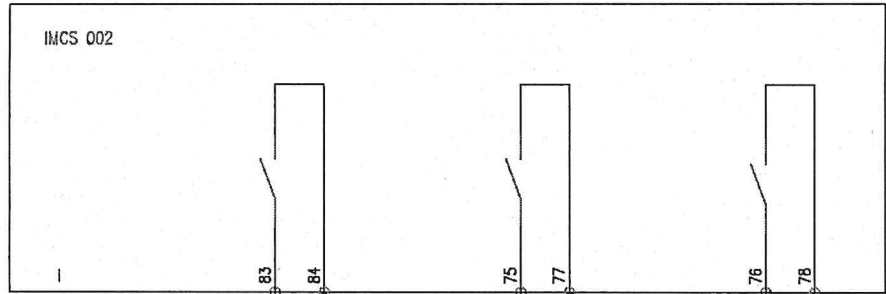
• IHR CONTROLLER1 RACK NO.0 SLOT NO.10

16LRX  
16LRX001AR

LOGIC INPUTS

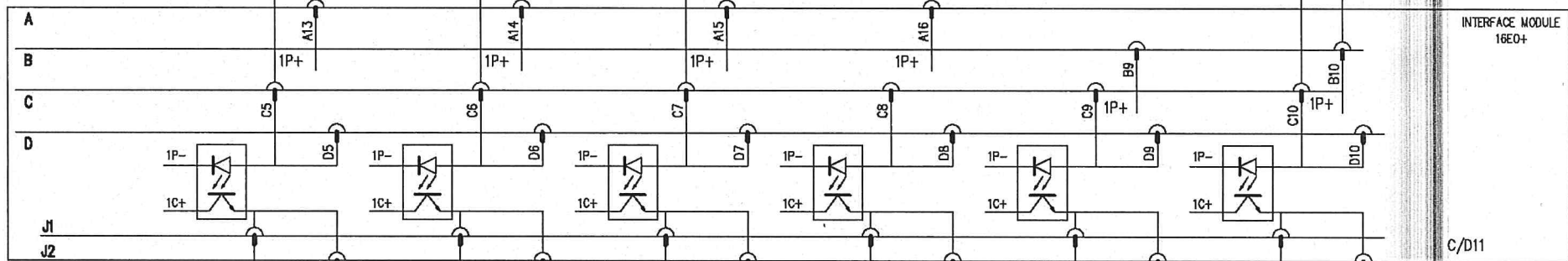
abcd Power  
M1017A30020 G SHEET 140 SEE 141

1	2	3	4	5	6	7	8
	10KV CB 9T	10KV CB 9T	10KV CB 9T			10KV CB 10T	
	220DC FAULT	INST OVER CURRENT	TIME-DEL VOERCURRENT			IN SERVICE	
	DETECTED	DETECTED	DETECTED			DETECTED	



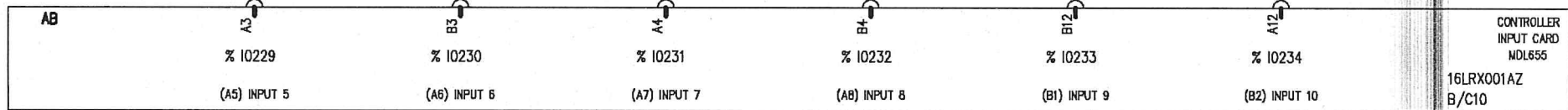
(140 - 8)

(142 - 1)



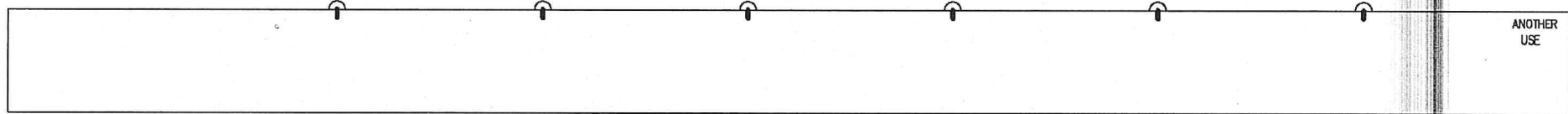
INTERFACE MODULE  
16E0+

C/D11



CONTROLLER  
INPUT CARD  
MDL655

16LRX001AZ  
B/C10



ANOTHER  
USE

\* IHR CONTROLLER1 RACK NO.0 SLOT NO.10

16LRX

LOGIC INPUTS

16LRX001AR

abcd

Power

M1017A30020

G

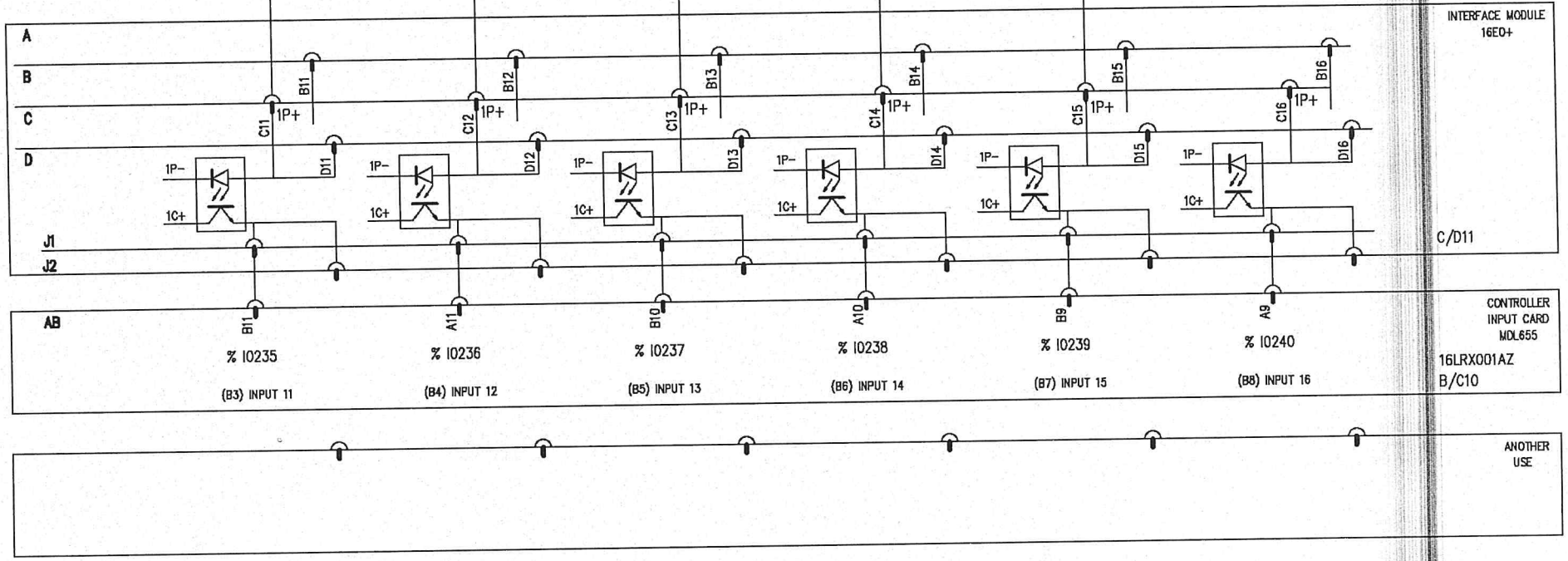
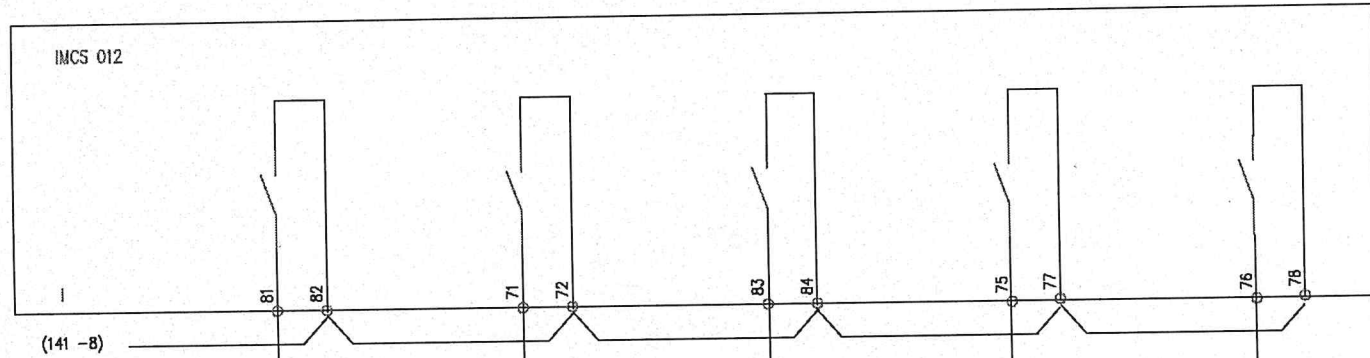
SHEET

SEE

141

142

1	2	3	4	5	6	7	8
	10KV CB 10T	10KV CB 10T	10KV CB 10T	10KV CB 10T	10KV CB 10T		
	48V DC FAULT	TEST POSITION	220DC FAULT	INST OVER CURRENT	TIME-DEL OVERCURRENT		
	DETECTED	DETECTED	DETECTED	DETECTED	DETECTED		

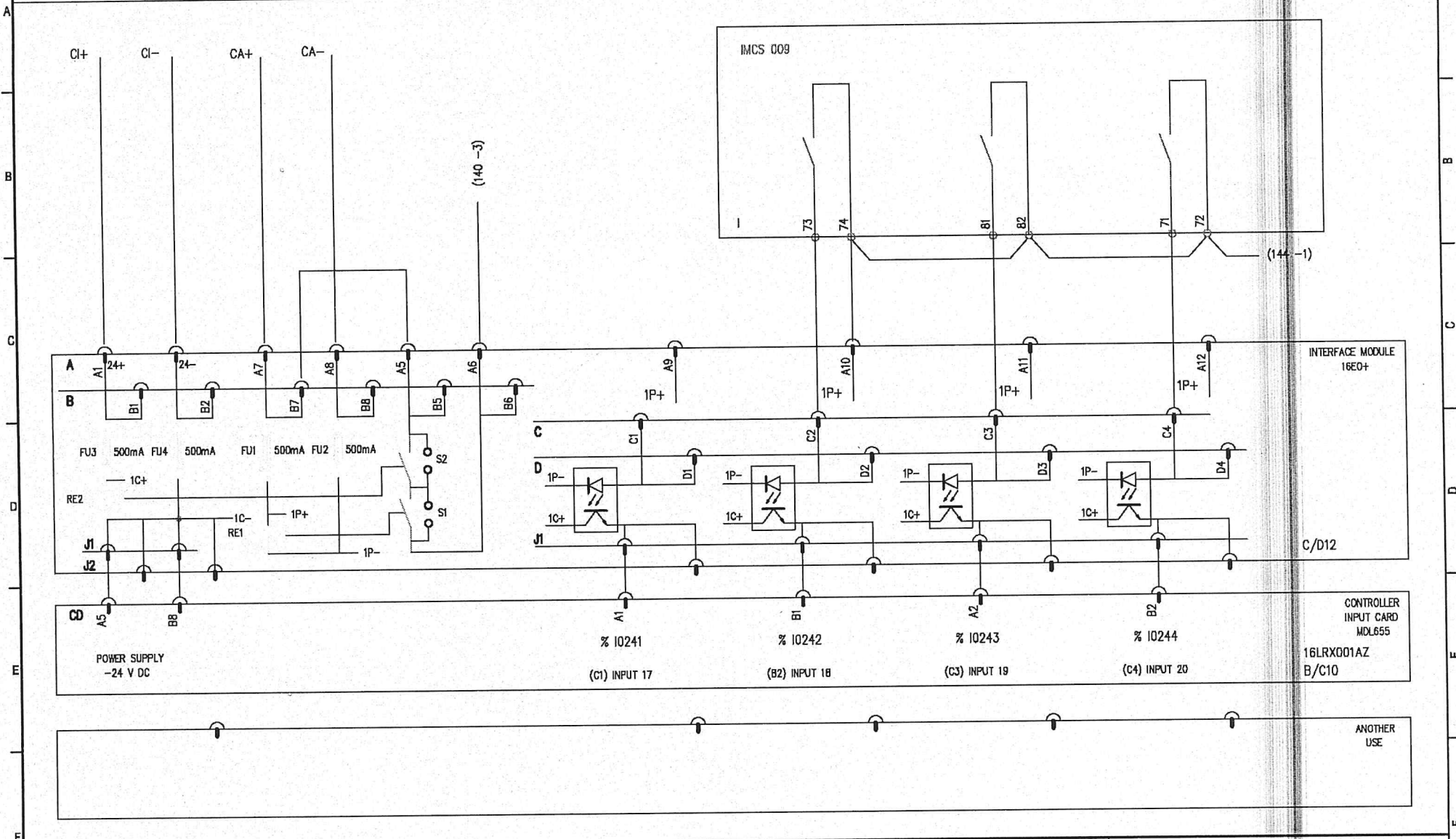


\* IHR CONTROLLER1 RACK NO.0 SLOT NO.10

16LRX 16LRX001AR	LOGIC INPUTS	abcd	Power	
		M1017A30020	G	
		SHEET	SEE	
		142	143	



1	2	3	4	5	6	7	8
CONTROLLER	PROCESS	VOLTAGE		10KV CB 11T	10KV CB 11T	10KV CB 11T	
POLARITY	POLARITY	PRESENCE		IN SERVICE	48V DC FAULT	TEST POSITION	
+/-24 V DC	+/- 48V DC			DETECTED	DETECTED	DETECTED	



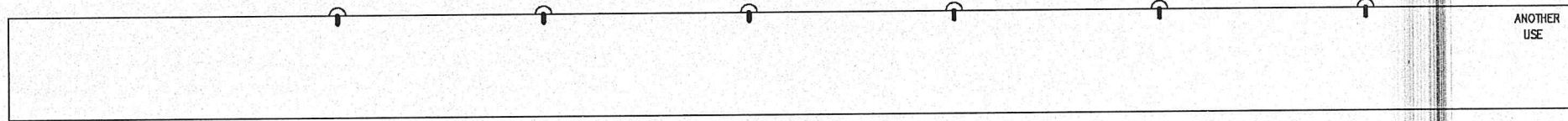
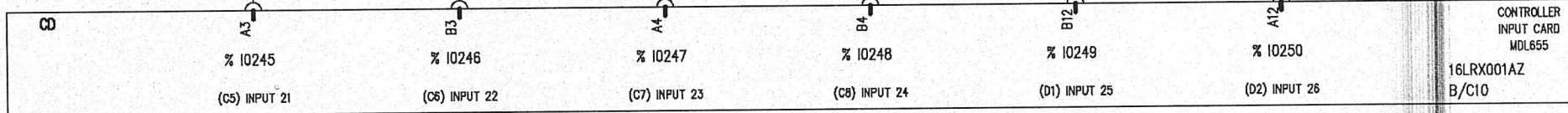
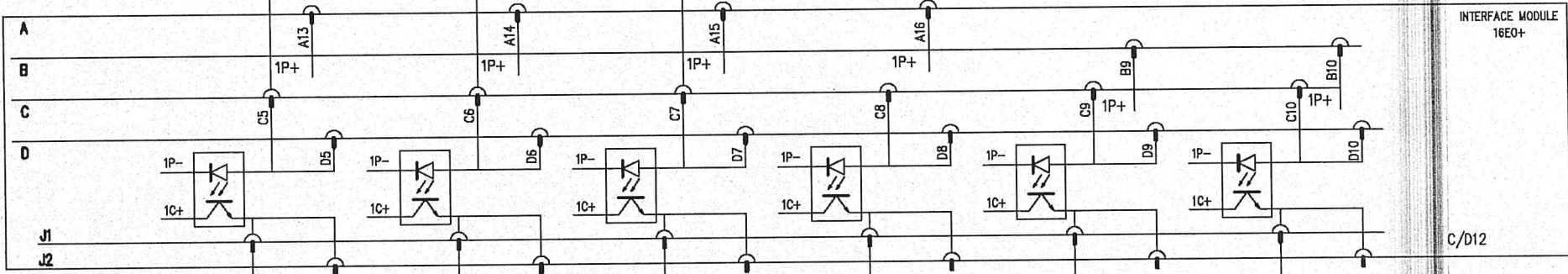
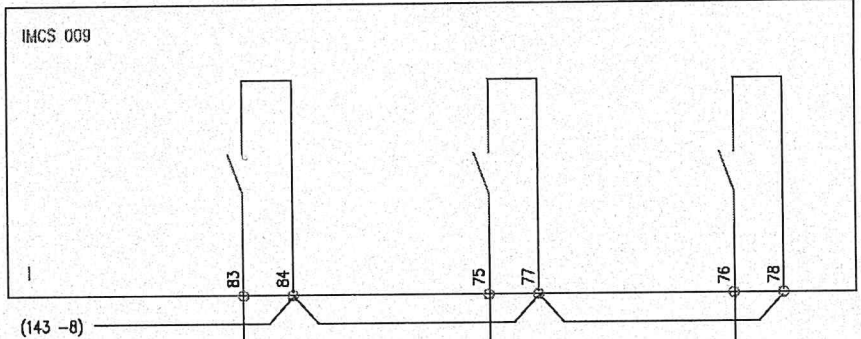
\* IHR CONTROLLER1 RACK NO.0 SLOT NO.10

16LRX  
16LRX001AR

LOGIC INPUTS

abcd Power  
M1017A30020 G SHEET 143 SEE 144

1	2	3	4	5	6	7	8
	10KV CB 11T	10KV CB 11T	10KV CB 11T				
	220DC FAULT	INST OVER CURRENT	TIME-DEL OVERCURRENT				
	DETECTED	DETECTED	DETECTED				



\* IHR CONTROLLER1 RACK NO.0 SLOT NO.10

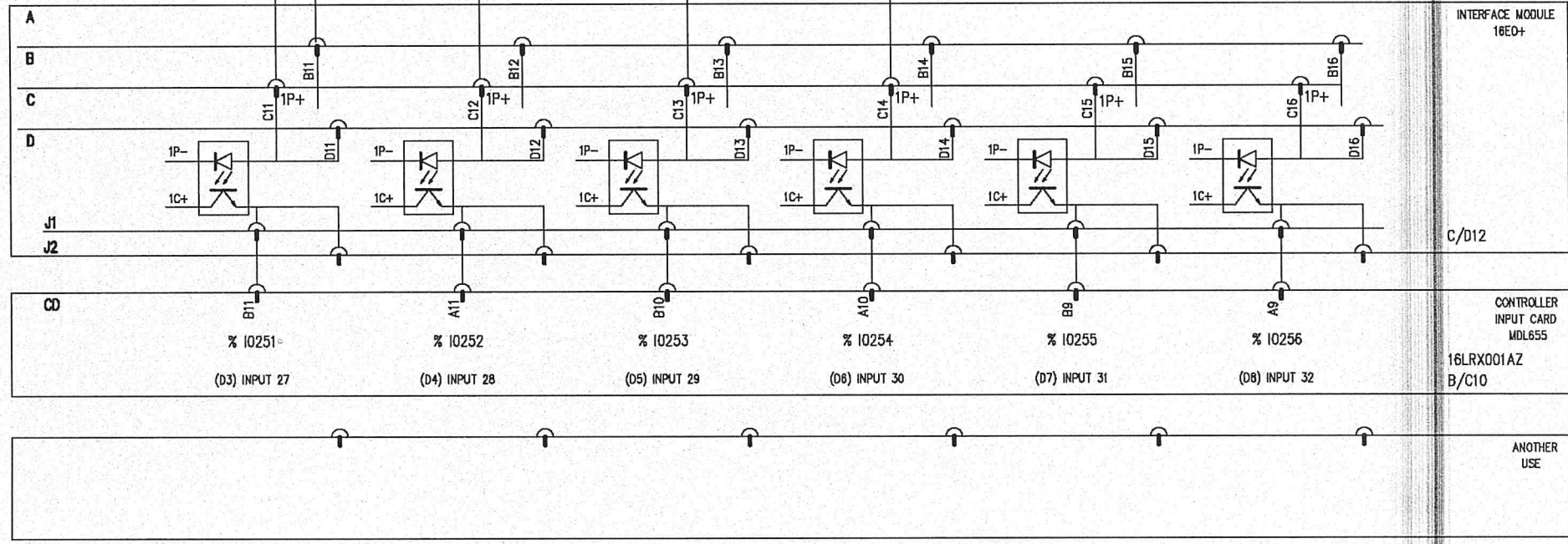
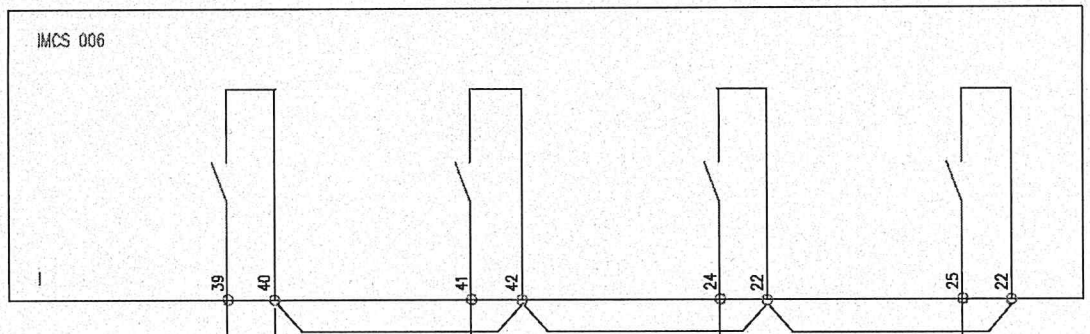
16LRX  
16LRX001AR

LOGIC INPUTS

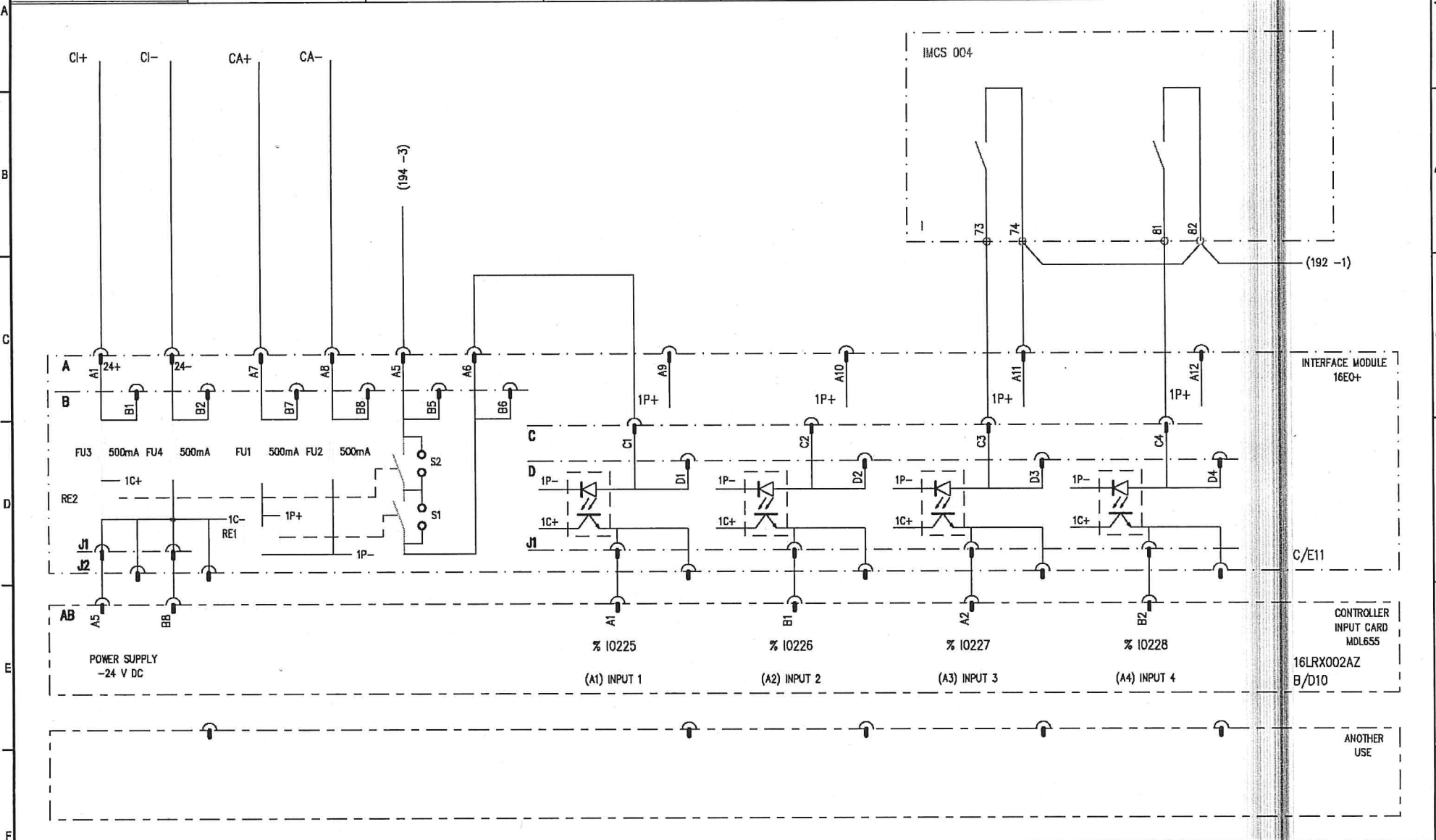
abcd Power  
M1017A30020 G

SHEET	SEE
144	145

1	2	3	4	5	6	7	8
	10kV BUSBAR 1	10kV BUSBAR 1	10kV BUSBAR 1	10kV BUSBAR 1			
	PT IN SERVICE	PT TEST POSITION	VOLTAGE LOSS	EARTH FAULT			
	DETECTED	DETECTED	DETECTED	DETECTED			



1	2	3	4	5	6	7	8
CONTROLLER	PROCESS	VOLTAGE	RACK 0 SLOT 10		10KV CB 13T	10KV CB 13T	
POLARITY	POLARITY	PRESENCE	INPUT VALIDATION		IN SERVICE	48V DC FAULT	
+/-24 V DC	+/- 48V DC		PRESENCE		DETECTED	DETECTED	



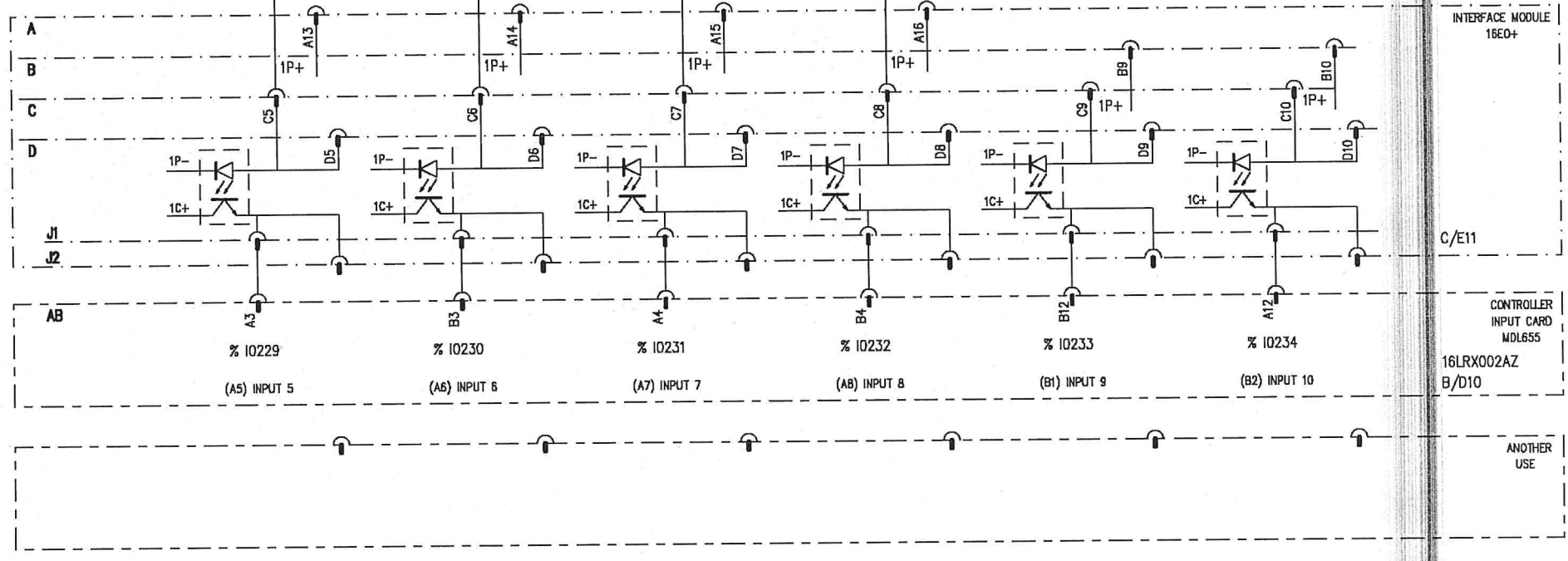
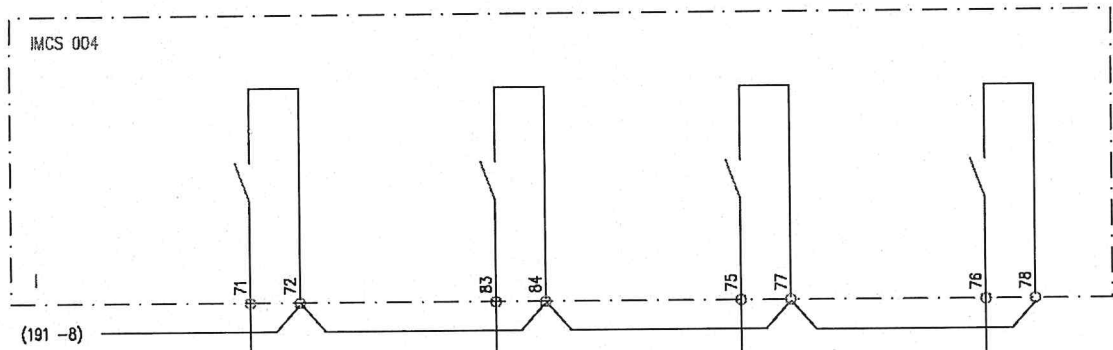
\* IHR CONTROLLER2 RACK NO.0 SLOT NO.10

16LRX  
16LRX001AR

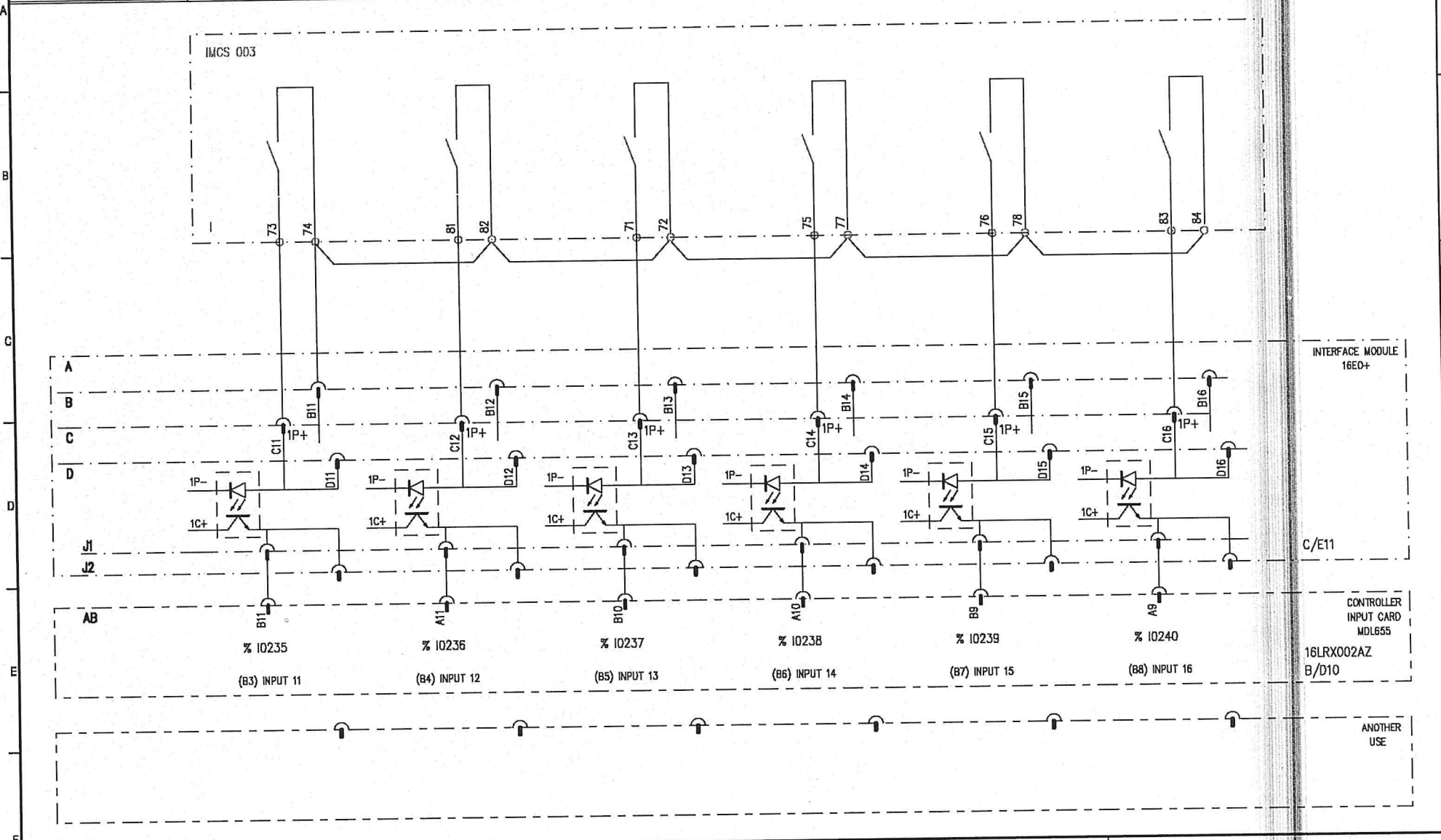
LOGIC INPUTS

abcd Power  
M1017A30020 G SHEET 191 SEE 192

1	2	3	4	5	6	7	8
	10KV CB 13T	10KV CB 13T	10KV CB 13T	10KV CB 13T			
	TEST POSITION	220V FAULT	INST. OVER CURRENT	TIME-DEL OVERCURRENT			
	DETECTED	DETECTED	DETECTED	DETECTED			



1	2	3	4	5	6	7	8
	10KV CB F2	10KV CB F2	10KV CB F2	10KV CB F2	10KV CB F2	10KV CB F2	
	IN SERVICE	48V DC FAULT	TEST POSITION	INST. OVER CURRENT	TIME-DEL OVERCURRENT	220V DC FAULT	
	DETECTED	DETECTED	DETECTED	DETECTED	DETECTED	DETECTED	



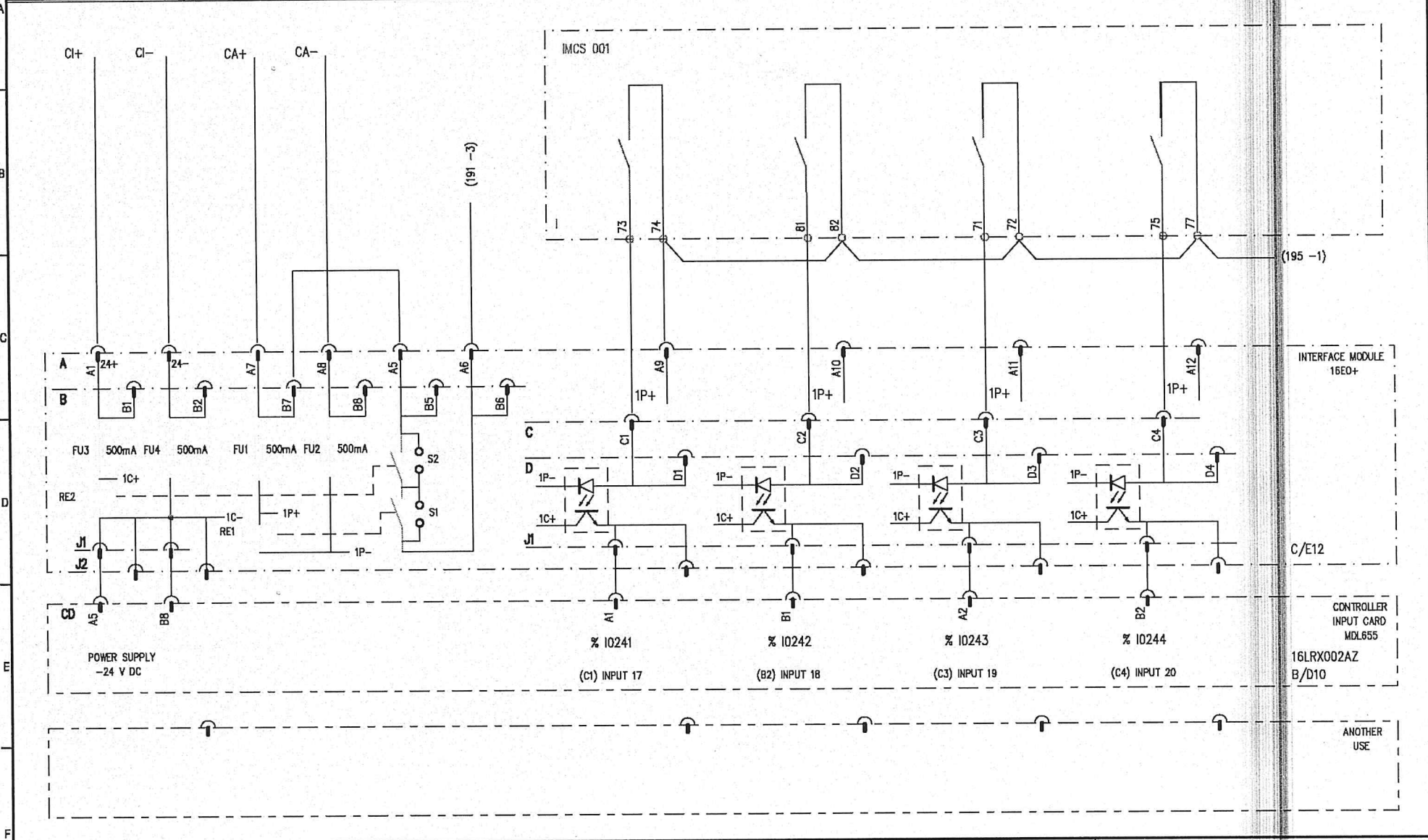
\* IHR CONTROLLER2 RACK NO.0 SLOT NO.10

16LRX  
16LRX001AR

LOGIC INPUTS

abcd Power  
M1017A30020 G  
SHEET 193 SEE 194

1	2	3	4	5	6	7	8
CONTROLLER	PROCESS	VOLTAGE	10KV CB F1	10KV CB F1	10KV CB F1	10KV CB F1	
POLARITY	POLARITY	PRESENCE	IN SERVICE	48V DC FAULT	TEST POSITION	INST. OVER CURRENT	
+/-24 V DC	+/- 48V DC		DETECTED	DETECTED	DETECTED	DETECTED	



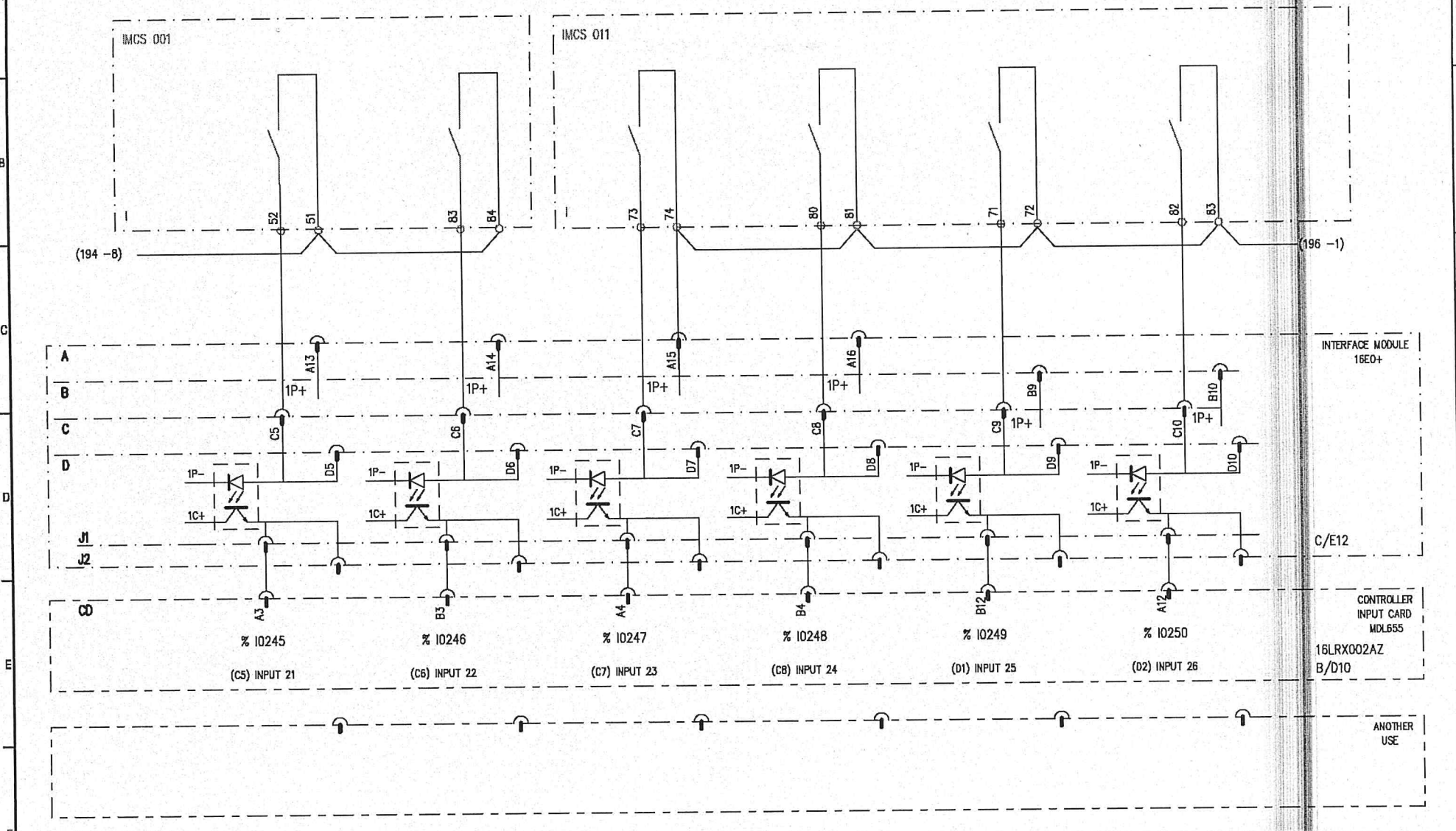
♦ IHR CONTROLLER2 RACK NO.0 SLOT NO.10

16LRX  
16LRX001AR

LOGIC INPUTS

abcd Power  
M1017A30020 G  
SHEET 194 SEE 195

1	2	3	4	5	6	7	8
	10KV CB F1	10KV CB F1	10KV CB AT	10KV CB AT	10KV CB AT	10KV CB AT	
	TIME-DEL OVERCURRENT	220V DC FAULT	IN SERVICE	48V DC FAULT	TEST POSITION	220V IN FAULT	
	DETECTED	DETECTED	DETECTED	DETECTED	DETECTED	DETECTED	



\* IHR CONTROLLER2 RACK NO.0 SLOT NO.10

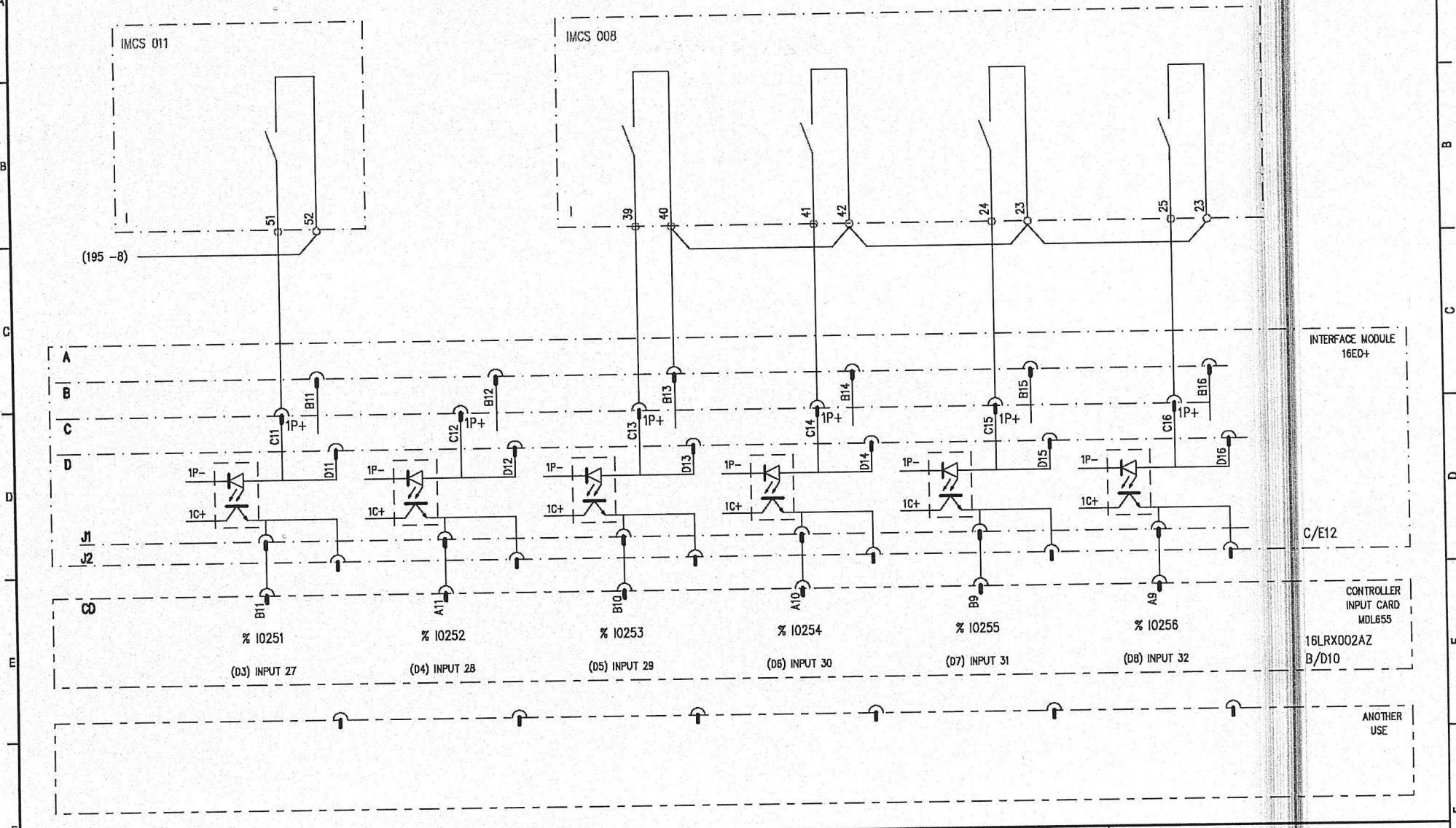
16LRX  
16LRX001AR

LOGIC INPUTS

abcd Power  
M1017A30020 H  
SHEET 195 SEE 196



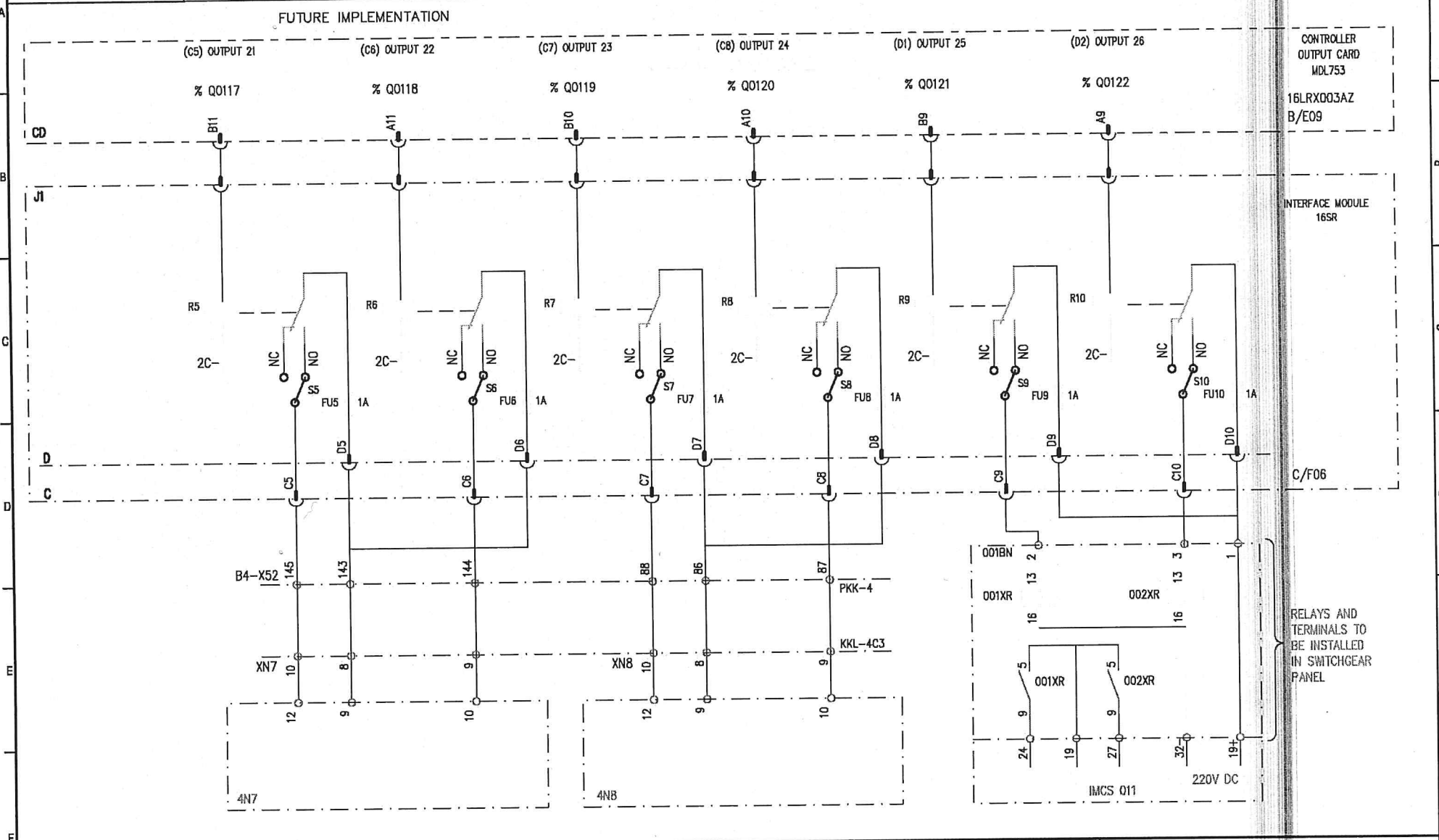
1	2	3	4	5	6	7	8
	10kV CB AT		10kV BUSBAR 2	10kV BUSBAR 2	10kV BUSBAR 2	10kV BUSBAR 2	
	TIME-DEL OVERCURRENT		PT IN SERVICE	PT TEST POSITION	VOLTAGE LOSS	EARTH FAULT	
	DETECTED		DETECTED	DETECTED	DETECTED	DETECTED	



\* IHR CONTROLLER2 RACK NO.0 SLOT NO.10

16LRX	LOGIC INPUTS		M1017A30020	H	SHEET 196	SEE 200
	16LRX001AR					

1	2	3	4	5	6	7	8
	220KV L12	220KV L12	220KV L12	220KV L12	AUTO-TFR 10KV SIDE	AUTO-TFR 10KV SIDE	
	DISC. 4N7	DISC. 4N7	DISC. 4N8	DISC. 4N8	CB-IN	CB-IN	
	CLOSING	OPENING	CLOSING	OPENING	CLOSING	OPENING	



\* MAIN CONTROLLER RACK NO.0 SLOT NO.9

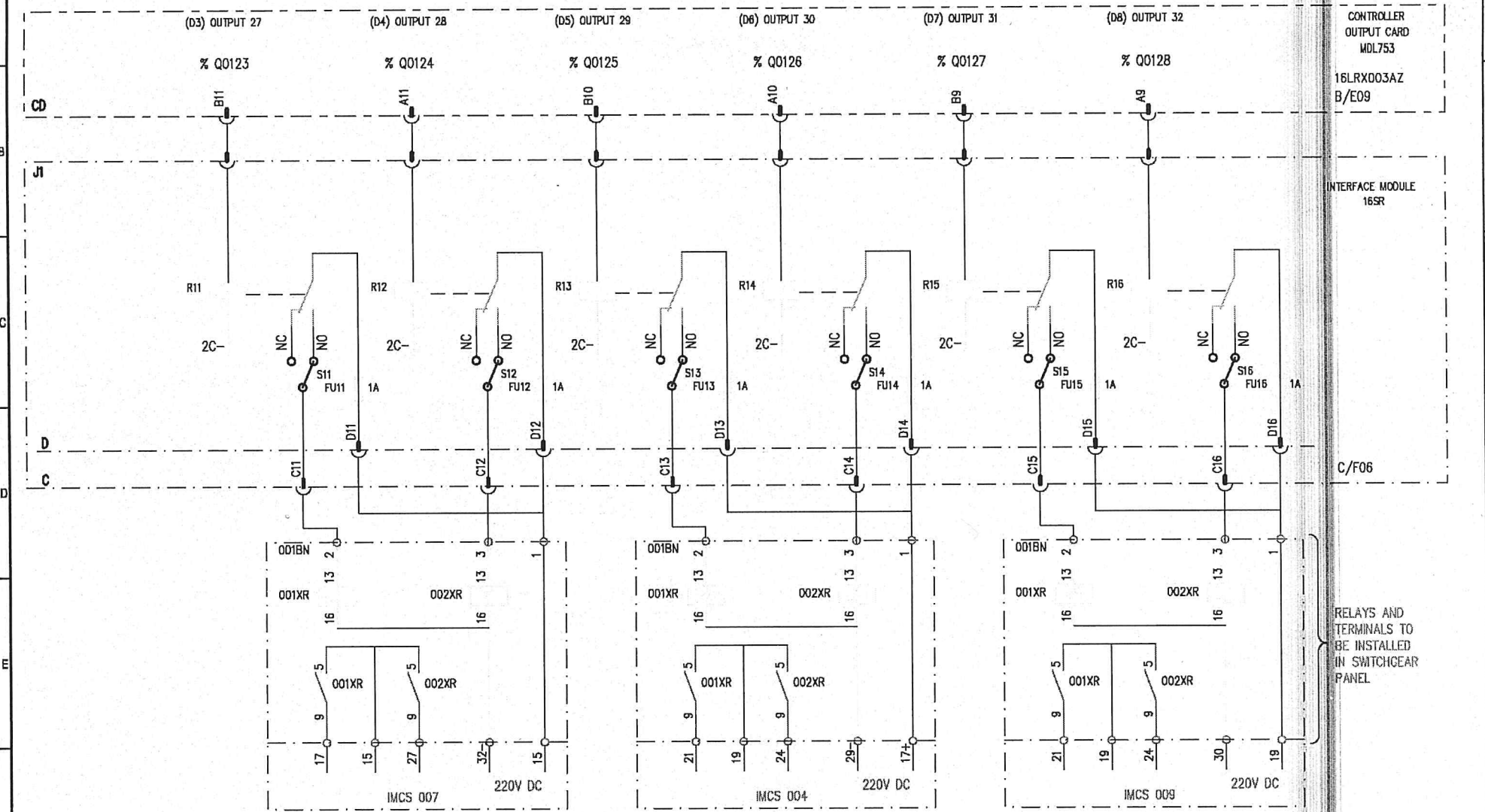
16LRX  
16LRX001AR

LOGIC OUTPUTS

M1017A30020

SHEET	SEE
228	229

1	2	3	4	5	6	7	8
	10KV BUS TIE	10KV BUS TIE	10KV FEEDER	10KV FEEDER	10KV FEEDER	10KV FEEDER	
	CB-TB	CB-TB	CB F3	CB F3	CB F5	CB F5	
	CLOSING	OPENING	CLOSING	OPENING	CLOSING	OPENING	



CONTROLLER  
OUTPUT CARD  
MDL753  
16LRX003AZ  
B/EO9

INTERFACE MODULE  
16SR

C/F06

RELAYS AND  
TERMINALS TO  
BE INSTALLED  
IN SWITCHGEAR  
PANEL

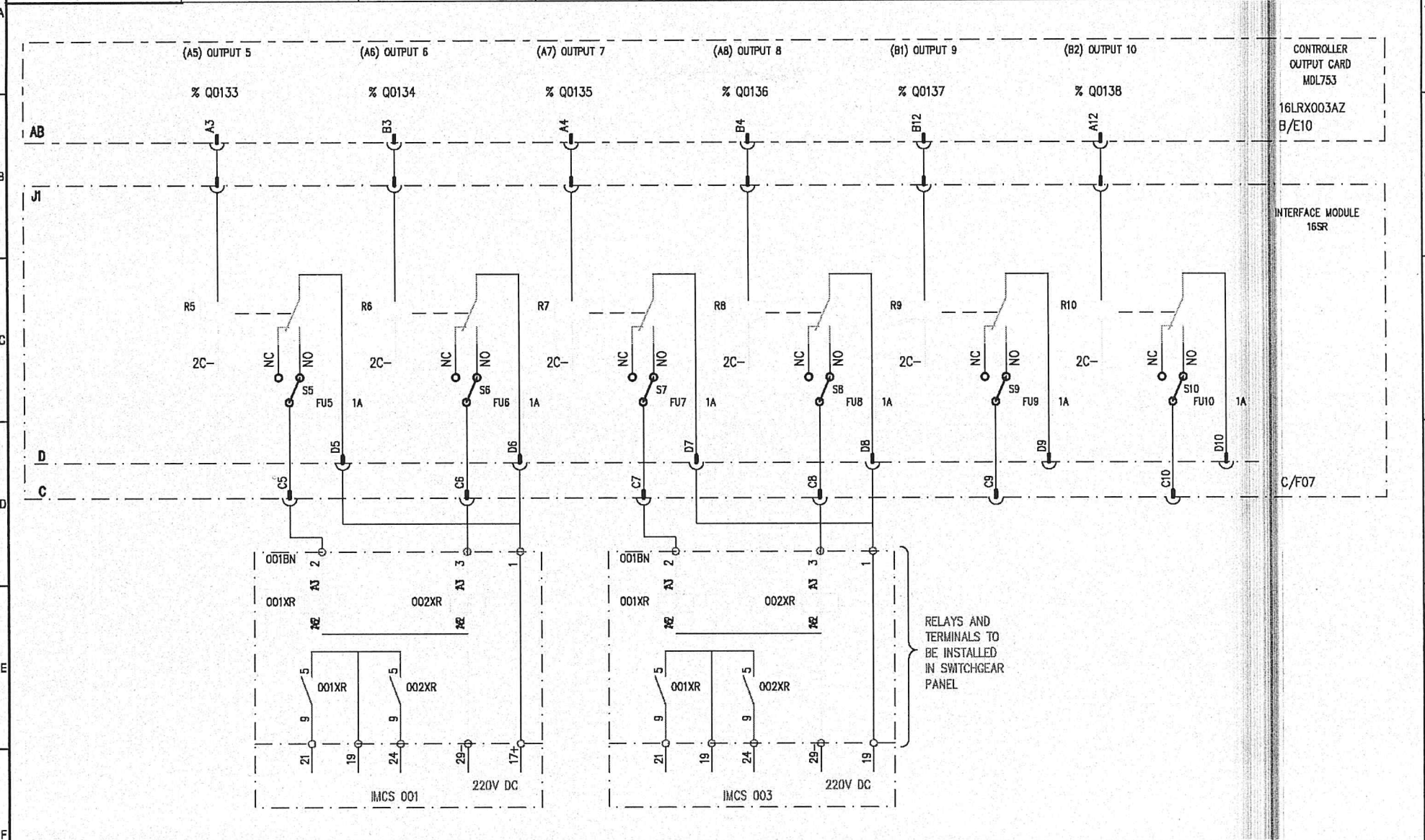
\* MAIN CONTROLLER RACK NO.0 SLOT NO.9

16LRX  
16LRX001AR

LOGIC OUTPUTS

M1017A30020 H  
SHEET 229 SEE 230

1	2	3	4	5	6	7	8
	10KV FEEDER	10KV FEEDER	SPARE	SPARE			
	CB F1	CB F1	CB F2	CB F2			
	CLOSING	OPENING	CLOSING	OPENING			



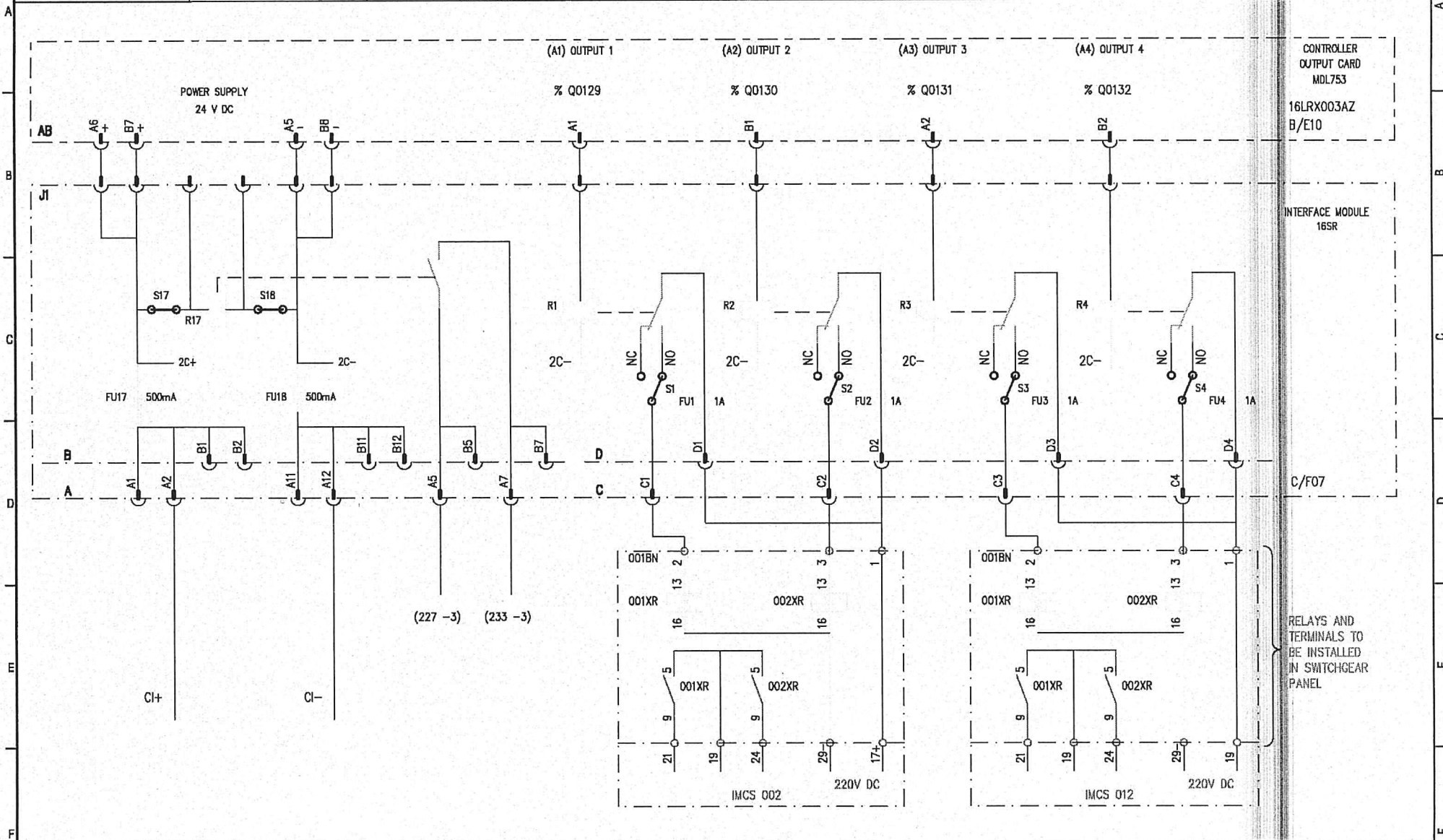
\* MAIN CONTROLLER RACK NO.0 SLOT NO.10

16LRX  
16LRX001AR

LOGIC OUTPUTS

abcd	Power
M1017A30020	H
SHEET 231	SEE 232

1	2	3	4	5	6	7	8
CONTROLLER	CONTROLLER	CONTROL	10KV FEEDER 9T	10KV FEEDER 9T	10KV FEEDER 10T	10KV FEEDER 10T	
POLARITY	POLARITY	PRESENCE	CB 9T	CB 9T	CB 10T	CB 10T	
+24 V DC	-24 V DC	CARD	CLOSING	OPENING	CLOSING	OPENING	



\* MAIN CONTROLLER RACK NO.0 SLOT NO.10

16LRX  
16LRX001AR

LOGIC OUTPUTS

M1017A30020

SHEET	SEE
230	231