



REPUBLIKA E SHQIPËRISË
KOORPORATA ELEKTROENERGJITIKO SHQIPTARE

RAPORTI TOPOGRAFIK

“HARTIM PROJEKT PER REABILITIMIN E TUNELIT
TE SHKARKIMIT PRANE DIGES SE ZADEJES”

FAZA: PROJEKT ZBATIMI



“HE & SK 11” sh.p.k

Rr. Mustafa Matohiti, banesa nr.31,

kati perdhe, hyrja 1

Tepelene – Shqiperi

Email: heskshpk@gmail.com



PËRMBAJTJA

1. STUDIMI TOPOGRAFIK	3
2. Zhvillimi i Nivelimit Gjeometrik.....	5
3. Rilevimi.....	5
3.1. Pershkrimi i punes ne terren.....	6
3.2. Pershkrimi fizik i zones.	6
4. ORTOFOTO E ZONËS	9
Pika Poligonale Nr.1	10
Planimetria e pikes	10
Pika Poligonale Nr.2.....	11
Planimetria e pikes	11
Pika Poligonale Nr.3.....	11
Planimetria e pikes	12
5. FOTO	14
6. PIKAT E RILEVIMIT.....	17

STUDIMI TOPOGRAFIK

Punimet gjeodezike dhe topografike per objektin “*HARTIM PROJEKTI PER REHABILITIMIN E TUNELIT TE SHKARKIMIT NE DIGEN E ZADEJËS*” u kryen mbi bazen e kerkesave teknike te pergjitheshme dhe specifike te parashikuara nga Investitori. Grupi i topografeve organizoi punen dhe zhvilloi punimet ne baze te perftuar se perftuar ne punimete meparshme te kesaj natyre. Para fillimit te punimeve topografike u siguruan materialet e nevojshme hartografike, gjeodezike si dhe paisjet perkatese.

Rilevimi eshte bere me Total Station dhe GPS Baze Rover. Duke patur parasysh zonen eshte me frytedhenes perdorimi i ketij sistemi.

Me kete sistem mund te percaktohet lehtesisht kordinatat gjeodezike per cdo pike.

Gjate rikonicionit ne terren u vendosen pikat e poligonit dhe markat e nivelimit ne pikat e fiksuara ne teren. Pikat e fiksuara neteren u pajisen me koordinata dhe kuota. Para fillimit te rilevimit u krye rikonicioni i detajuar i terrenit, i cili sherbeu per percaktimin esakte te metodikes se punes, menyren e ndertimit te rrjetit gjeodezik, poligonometrise se rilevimit, nivelimit teknik si dhe organizimit te punes.

Fiksimi ne terren i pikave poligonale te rilevimit u krye me gozhde betoni me gjatesi 5-6 cm te ngulura ne toke (shkemb), dhe me spray te kuq duke shenuar ne menyre te dallueshme piken. Ato jane vendosur ne vende te dukeshme dhe te pa levizeshme, jane vendosur ne vende te qendrueshme, kane pamje te ndersjellte, duke siguruar ne kete menyre lidhjen dhe vazhdimesine e punes nga faza e projektimit ne ate te zbatimit te tij.

Çdo pike e fiksuar ne terren ka numerin, koordinatat te saj, sidhe Kuoten e perftuar nepermjet nivelimit gjeometrik e gjeodezik (shih planimetrite e objekteve ku gjenden koordinatat tre dimensionale tepikave mbeshtetese). Keto te dhena sigurojne gjetjen e tyre me lehtesine terren.

Pikat fikse te terrenit jane te percaktuara ne planimetrine e veçante te projektit te objektit “Rehabilitimi i Tuneleve dhe GaleriveNdihmese (Aksesit) ne Digen e Hec Zadejë”

Matjet u kryen Stacion Total te tipit Leica 307, si dhe me nivele, te cilet teknikisht sigurojne matjet e kendeve e largesive me saktesine e nevojshme per projektimin e me pas edhe per zbatimin e punimeve.



**Leica TCR805 Power
Trimble M3**



Dini Level



**BAZE + ROVER
(Sokkia GRX1 + Topcon HIPER II)**

Zhvillimi i Nivelimit Gjeometrik

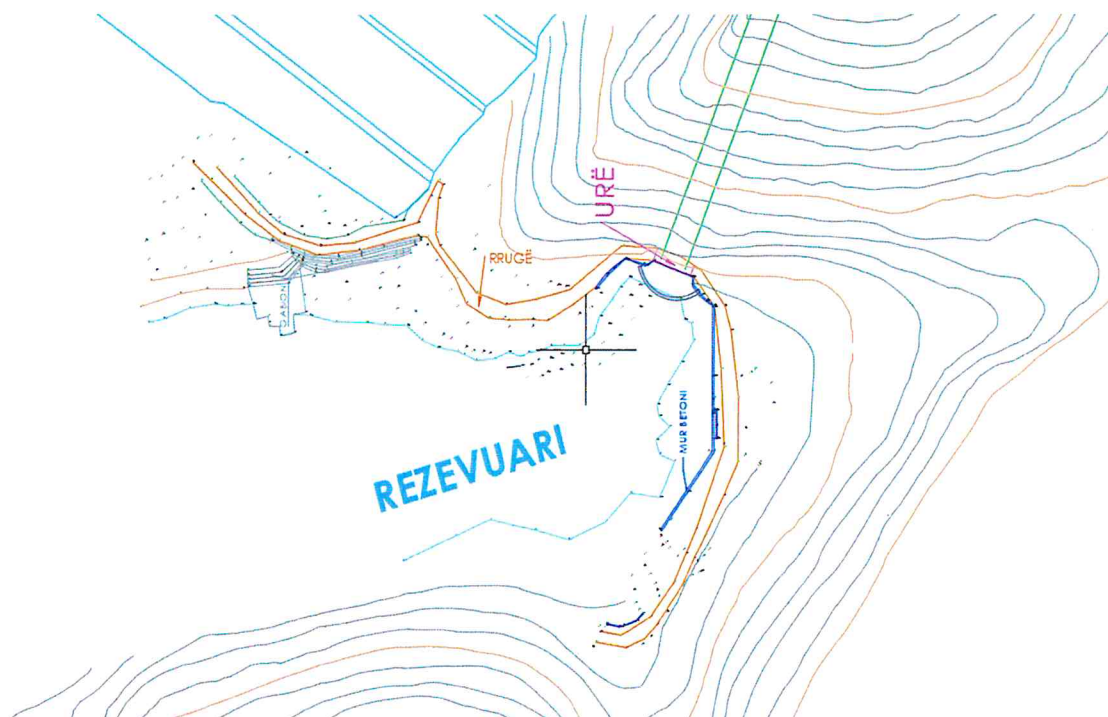
Per te siguruar kerkesat e larta teknike ne punimet rievuse, u percaktua qe saktesia altimetrike e punimeve topografike te jete e larte dhe per kete qellim u zhvillua nivelim gjeometrik per pikat epoligonometrise ne te gjithe sektoret e galerive.

Nivelimi gjeometrik u krye me nivelen teknike te tipit Dini Level, me metoden e nivelimit teknik te dyfishte, duke matur çdo disnivel dy here, me dy vendosje instrumenti. Diferenca midis dy disniveleve te perftuarne çdo stacion nuk u lejua me teper se 2 mm.

Rilevimi

Duke u mbeshtetur ne pikat e poligonometrise dhe te nivelimit gjeometrik u zhvillua rrjeti i matjeve topografike ne objektin "Rehabilitimi i Tuneleve dhe Galerive Ndhmese (Aksesit) ne Digen eHec Zadeje".

Eshte rievuar rruga egzistuse e tunelit te shkarkimit, kanale, pusete, platforme betoni, objekte te ndryshem, etj. Objektet e pare ne teren jane hedhur ne relief te gjithe. Punimet topogjeodezike te kryera jane mbeshtetur ne shkallen e plote te pergatitjes profesionale, ne perdorimin e teknologjive bashkekohore per matjet fushore dhe perpunimin kompjuterik e te dhenave, per te plotesuar kerkesat teknike te parashtruara nga projektuesit. Çdo pike e marre ne teren ka koordinata tre dimensionale, te paraqitura ne projekt.



Perpunimi i materialit topografik ne zyre eshte bere me programin Autocad dhe ArcGIS nga ku eshte perftuar rievimi tre dimensional. Ky relief sherben si baze per hartimin e projektit

te zbatimit me saktesine dhe cilesine e kerkuar ne termat e references nga investitori. Ne materialin grafik te projektit jepet planimetria e Stacioneve dhe tabela e koordinatave te pikave te vendosura ne terren.

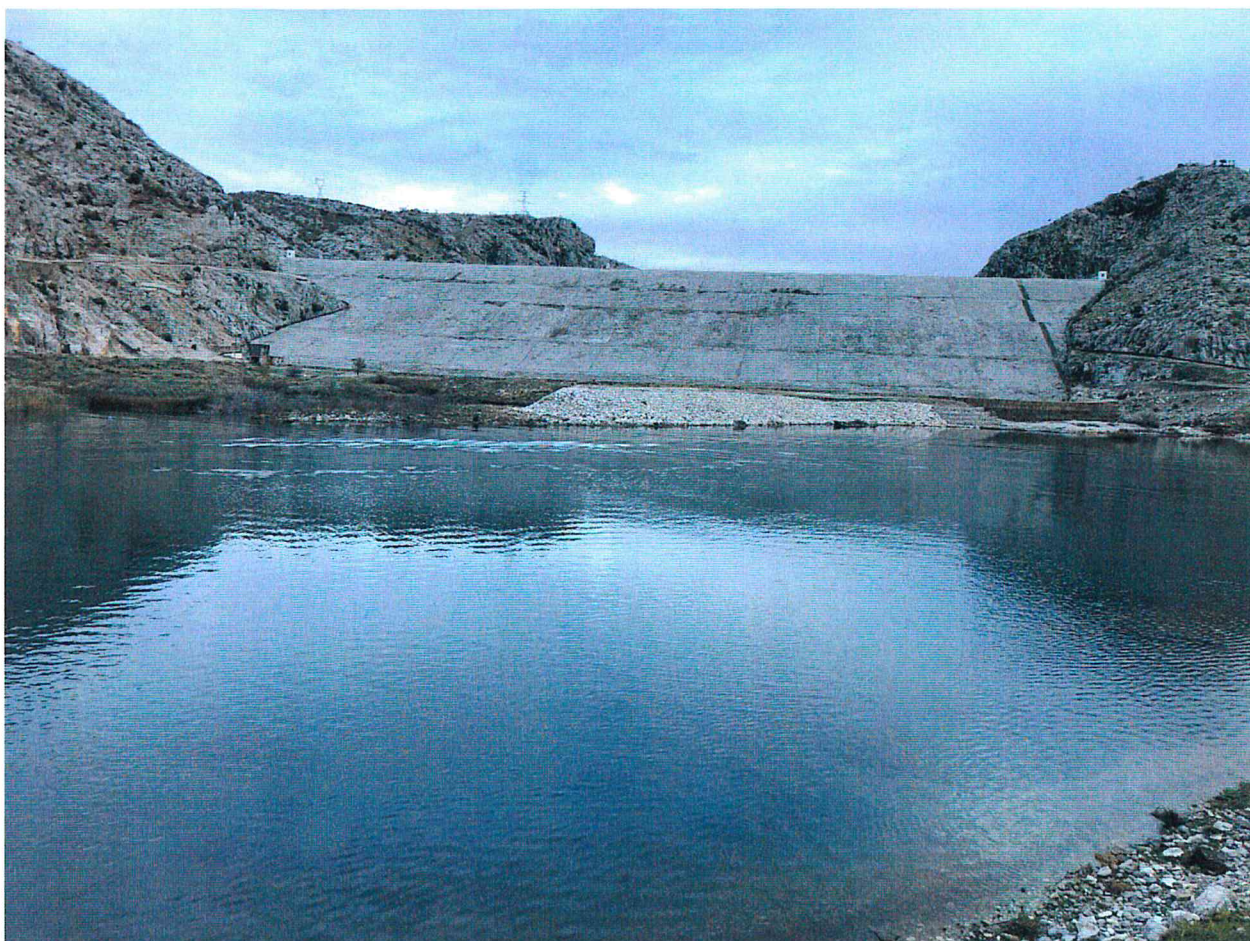
Pershkrimi i punes ne terren.

Per mbeshtetjen e punimeve per tunelin e shkarkimit u krijuan 3 pika teforta Poligonale ne hyrje te tunelit te cilat jane te mjaftueshmeper kryerjen matjeve te pikave detaje te rilevimit. Matja e ketyre pikaveu kryen me Stacioni Total ne te dy drejtimet duke siguruar saktessimilimetrike te koordinatave te pikave.

Pershkrimi fizik i zones.

Diga e HEC Zadejë me lartesi 79 m. Objektet kryesore të kësaj dige përfaqësohen nga trupi i digës (mbushje me gurë), ekrani beton-arme, tuneli e shkarkimit.

Zona ku është ndërtuar diga e Zadejës përfaqësohet nga një zonë me kushte normale gjeologjike dhe hidrogeologjike.



Shpatet ku janë vendosur veprat e kësaj nyje hidroenergjetike janë me pjerrësi të madhe dhe me zona me qëndrueshmëri të masivëve shkëmbore.



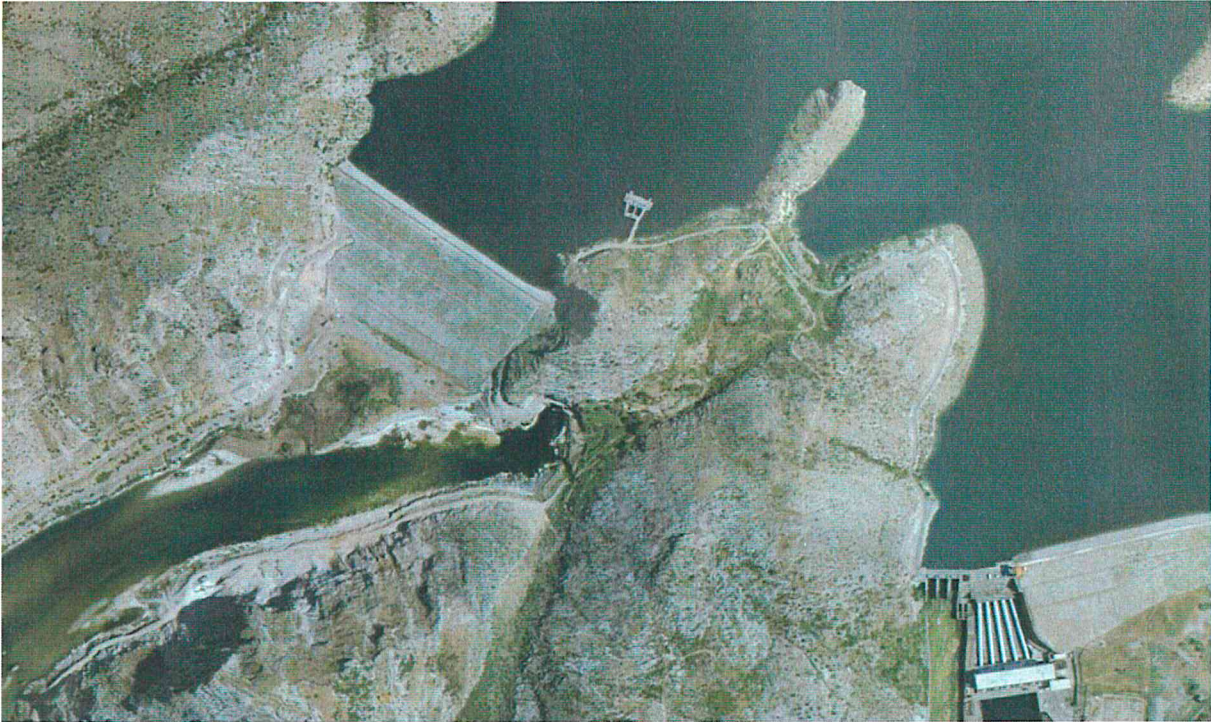
Dokumentacioni garfik i perdorur per hartimin e relievit dhe bazeper kryerjen e puniemve topografike
Hartat e perdorura si element ndihmes ne kryerjen e punimeveK-34-

64-C-d-3 te shkalles 1:10.000

Djathtas	X = 19°41'15"	Y = 42°02'30"
Majtas	X = 19°37'30"	Y = 42°00'



ORTOFOTO E ZONËS



Ortofoto e zones, viti 2015



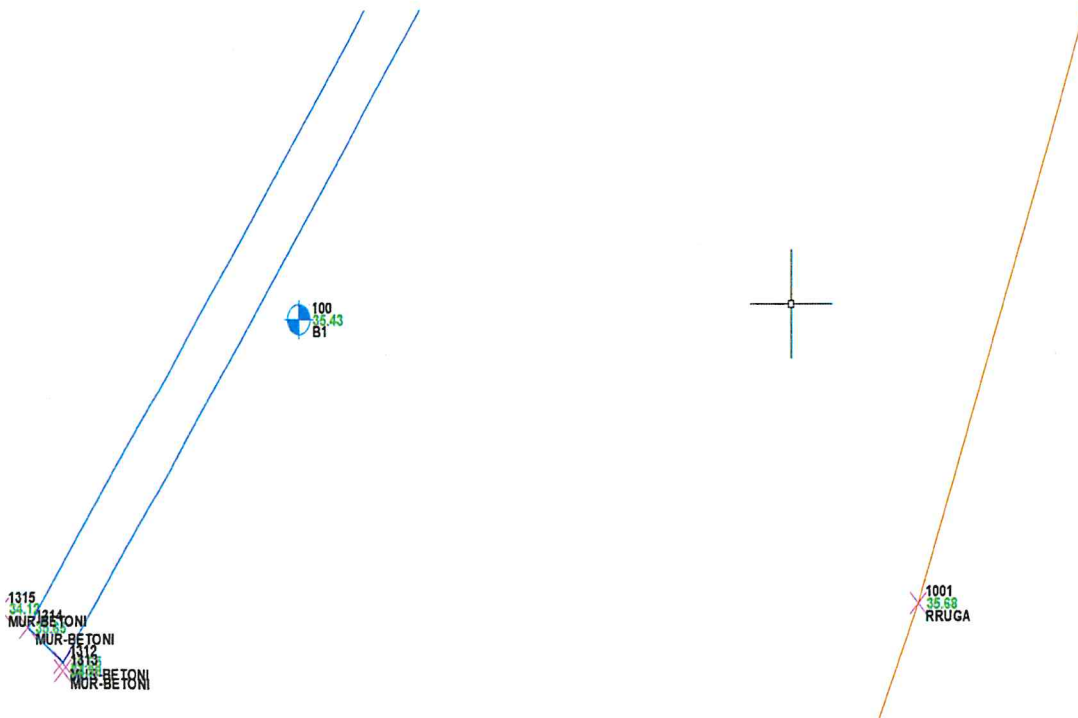
Ortofoto e daljes se tunelit te shkarkimit

Me poshte po paraqesim Katalogun e Skicave te Pikave Poligonale per tendihmuar gjetjen e tyre lehtesisht gjate zbatimit te projektit.

Pika Poligonale Nr.1

Pika Poligonale Nr.3 eshte e pozicionuar afersisht 1.15m larg murit mbajtes te rruges prane tunelit ne krah te majte dhe eshte shume prane rruges ekzistuese

Planimetria e pikes

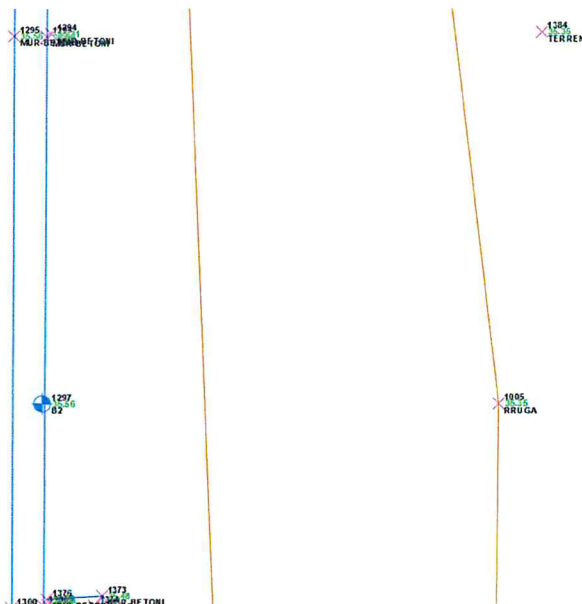


Koordinatat e pikes poligonale Nr.3			
E	N	H	KODI
386424.921	4652484.924	35.427	B1

Pika Poligonale Nr.2

Pika Poligonale Nr.2 eshte e pozicionuar mbi murin e betonit ne dalje te tunelit te shkarkimit.

Planimetria e pikes



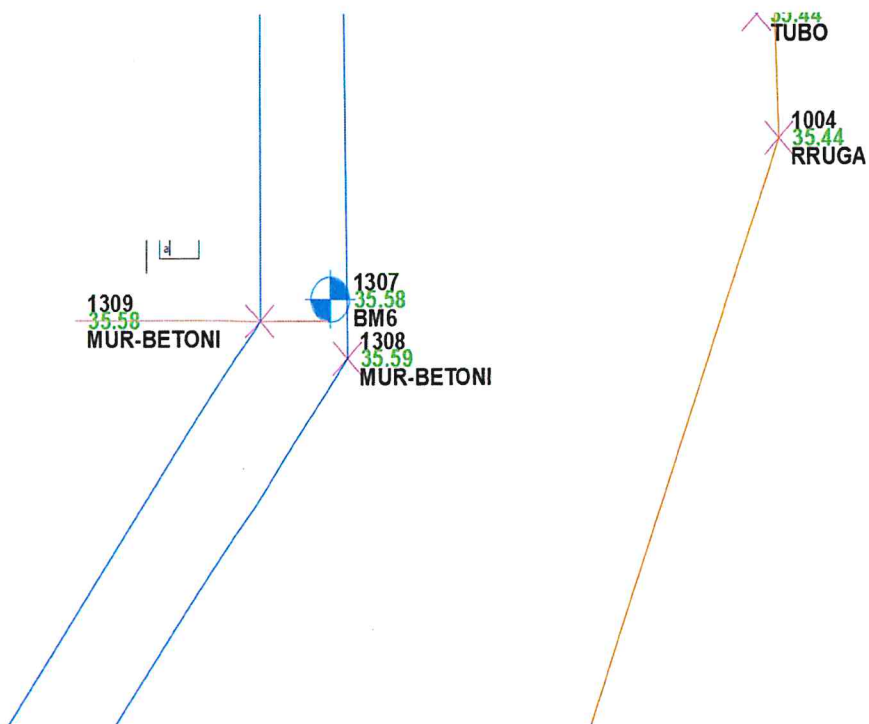
Koordinatat e pikes poligonale Nr.3

E	N	H	KODI
386442.846	4652531.908	35.556	B2

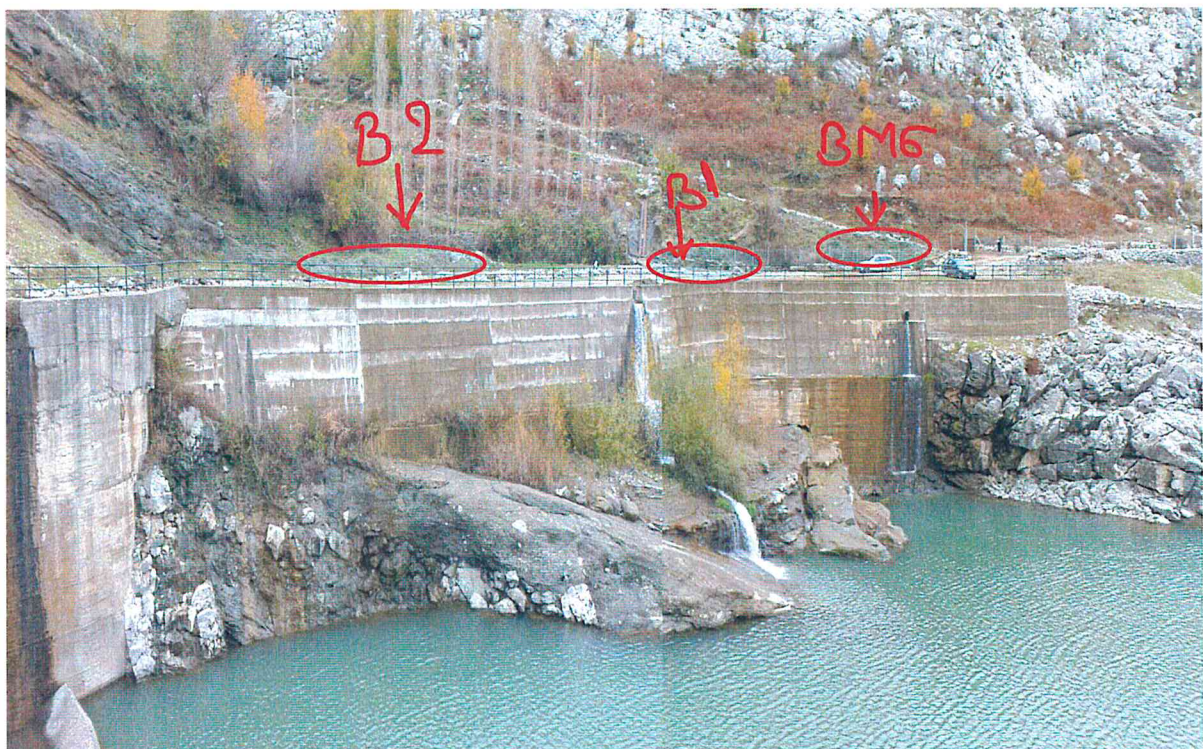
Pika Poligonale Nr.3

Pika Poligonale Nr.3 eshte e pozicionuar ne hyrje vepres e vedosur neasfalte, ndodhet afersisht 4 m nga porta metalike ekzisuese.

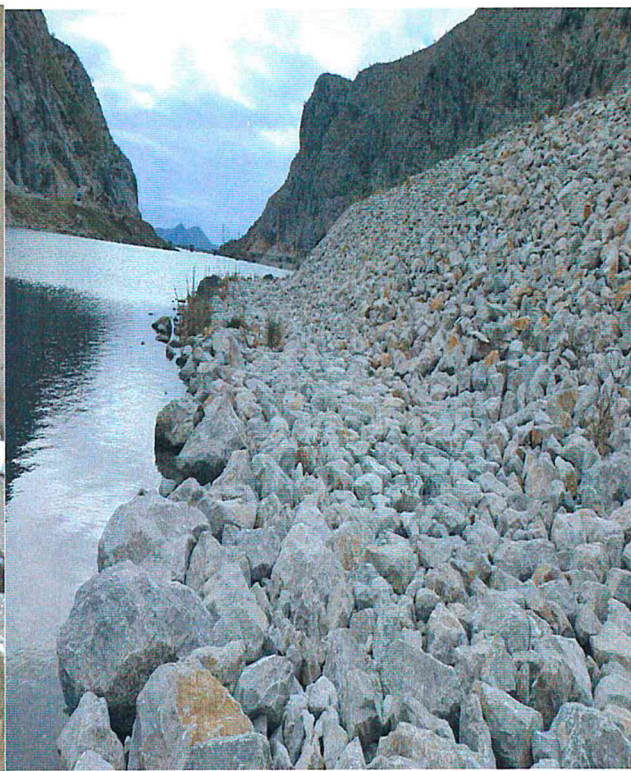
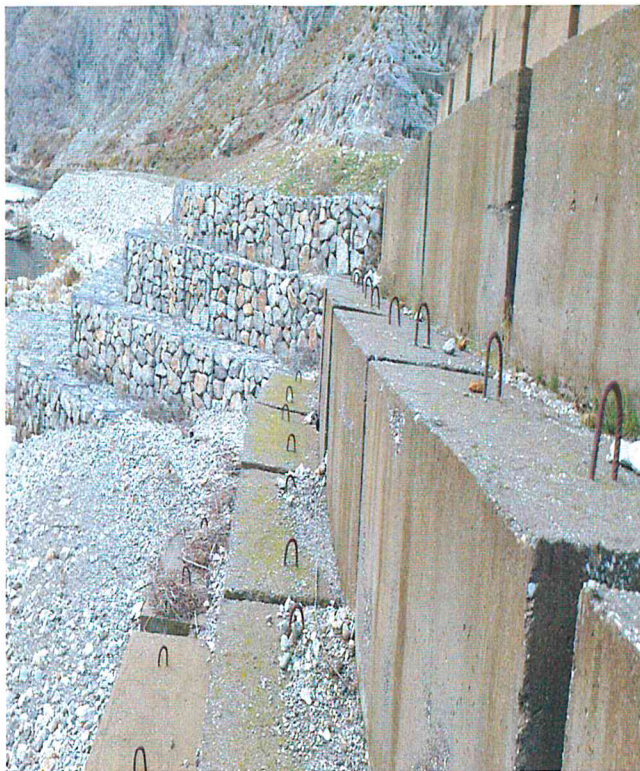
Planimetria e pikes

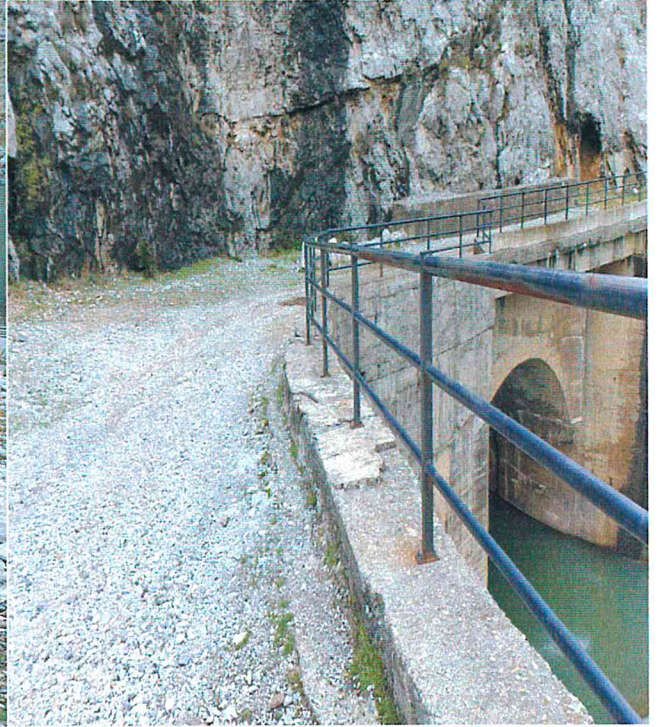
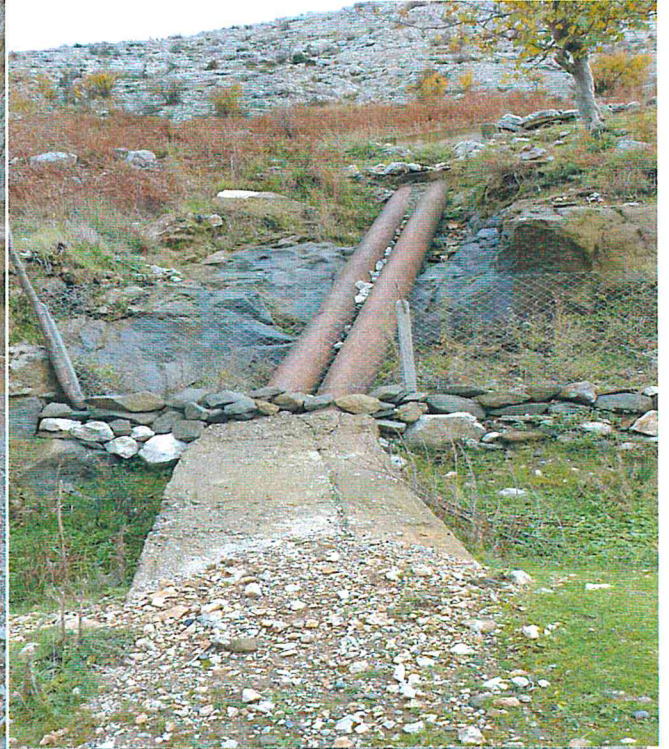


Koordinatat e pikes poligonale Nr.3			
E	N	H	KODI
386442.921	4652511.626	35.567	BM6



FOTO







PIKAT E RILEVIMIT

Nr	N (m)	E (m)	H (m)	Pershkrimi (Kodi)
1	4652484.924	386424.921	35.427	B1
2	4652478.786	386439.438	35.825	RRUGA
3	4652481.263	386435.544	35.678	RRUGA
4	4652494.404	386447.384	35.561	RRUGA
5	4652507.134	386453.253	35.734	RRUGA
6	4652513.003	386447.455	35.436	RRUGA
7	4652531.901	386453.516	35.353	RRUGA
8	4652543.205	386446.197	35.297	RRUGA
9	4652558.312	386450.379	35.296	RRUGA
10	4652567.738	386447.773	35.298	RRUGA
11	4652567.333	386443.450	35.272	RRUGA
12	4652579.038	386434.315	34.997	RRUGA
13	4652586.597	386429.446	35.05	RRUGA
14	4652585.379	386417.192	34.964	RRUGA
15	4652586.155	386405.113	35.459	RRUGA
16	4652591.061	386403.992	35.602	RRUGA
17	4652574.679	386392.335	36.595	RRUGA
18	4652568.518	386383.540	37.113	RRUGA
19	4652574.021	386381.757	37.025	RRUGA
20	4652575.177	386380.151	37.227	MUR-BETONI
21	4652575.451	386380.300	37.271	MUR-BETONI
22	4652575.265	386380.104	38.058	MUR-BETONI
23	4652575.530	386376.372	37.748	MUR-BETONI
24	4652575.764	386376.575	37.647	MUR-BETONI
25	4652576.673	386372.554	38.044	MUR-BETONI
26	4652576.924	386372.505	38.057	MUR-BETONI
27	4652570.284	386367.443	37.51	RRUGA
28	4652562.446	386365.646	36.928	RRUGA
29	4652563.145	386353.526	36.025	RRUGA
30	4652568.267	386354.424	35.901	RRUGA
31	4652572.934	386341.762	34.831	RRUGA
32	4652568.668	386337.389	34.426	RRUGA
33	4652573.767	386330.353	33.754	RRUGA
34	4652578.093	386332.966	33.264	RRUGA
35	4652585.397	386324.509	31.754	RRUGA
36	4652591.194	386326.224	31.224	RRUGA
37	4652595.807	386324.467	30.294	RRUGA
38	4652594.468	386320.726	30.194	RRUGA
39	4652600.102	386316.665	29.646	RRUGA
40	4652595.051	386316.020	29.698	RRUGA
41	4652589.433	386291.239	28.853	RRUGA

42	4652592.403	386289.776	28.881	RRUGA
43	4652591.248	386275.171	28.718	RRUGA
44	4652587.621	386274.140	28.812	RRUGA
45	4652595.662	386259.637	28.874	RRUGA
46	4652593.191	386257.763	28.903	RRUGA
47	4652603.795	386248.843	28.834	RRUGA
48	4652603.329	386243.202	28.969	RRUGA
49	4652616.865	386228.905	29.174	RRUGA
50	4652621.552	386231.501	29.291	RRUGA
51	4652623.651	386221.442	29.139	RRUGA
52	4652625.162	386216.896	28.19	TERREN
53	4652621.931	386212.731	28.076	TERREN
54	4652617.970	386208.244	28.113	TERREN
55	4652616.689	386203.433	28.205	TERREN
56	4652607.814	386209.043	28.158	TERREN
57	4652609.634	386214.348	28.286	TERREN
58	4652613.047	386221.388	28.179	TERREN
59	4652616.331	386225.014	28.102	TERREN
60	4652607.932	386232.720	28.135	TERREN
61	4652602.876	386226.759	28.26	TERREN
62	4652597.641	386216.943	28.095	TERREN
63	4652595.656	386208.774	28.036	TERREN
64	4652593.021	386201.567	27.783	TERREN
65	4652585.780	386202.788	27.836	TERREN
66	4652594.217	386223.848	28.032	TERREN
67	4652600.017	386240.851	28.027	TERREN
68	4652595.474	386247.130	27.935	TERREN
69	4652588.198	386237.272	28.057	TERREN
70	4652584.653	386229.233	27.911	TERREN
71	4652582.482	386218.208	27.408	TERREN
72	4652581.877	386206.401	27.798	TERREN
73	4652577.584	386203.986	27.346	FILL-SK
74	4652580.391	386220.813	26.644	FILL-SK
75	4652583.963	386238.415	28.01	FILL-SK
76	4652585.316	386248.646	28.025	FILL-SK
77	4652588.448	386260.534	27.605	FILL-SK
78	4652582.952	386257.991	26.319	GABION
79	4652581.732	386244.136	26.729	GABION
80	4652579.736	386244.226	26.632	GABION
81	4652581.058	386258.607	26.533	GABION
82	4652586.116	386264.690	26.774	GABION
83	4652584.747	386265.282	25.75	GABION
84	4652585.365	386263.947	25.688	GABION
85	4652579.449	386259.756	25.66	GABION
86	4652580.960	386258.711	25.567	GABION

87	4652578.261	386244.292	25.617	GABION
88	4652579.507	386244.108	25.588	GABION
89	4652576.824	386244.452	24.728	GABION
90	4652578.148	386244.268	24.657	GABION
91	4652578.047	386260.668	24.685	GABION
92	4652579.396	386259.891	24.58	GABION
93	4652583.501	386266.183	24.719	GABION
94	4652584.739	386265.407	24.76	GABION
95	4652579.991	386264.621	23.712	GABION
96	4652580.838	386263.518	23.635	GABION
97	4652576.700	386261.048	23.734	GABION
98	4652577.998	386260.788	23.671	GABION
99	4652575.275	386244.613	23.677	FND-SK
100	4652576.483	386244.368	23.636	GABION
101	4652575.202	386244.460	22.725	GABION
102	4652576.641	386261.203	22.688	GABION
103	4652572.021	386267.903	22.76	GABION
104	4652565.422	386268.876	22.759	GABION
105	4652564.533	386263.725	22.865	GABION
106	4652557.736	386264.199	22.652	GABION
107	4652557.559	386264.125	22.507	GABION
108	4652556.975	386262.960	22.472	GABION
109	4652556.873	386263.022	22.473	NIVELI-I-UJIT
110	4652556.204	386258.338	22.669	GABION
111	4652559.954	386257.969	22.761	GABION
112	4652559.881	386253.632	22.489	GABION
113	4652561.403	386253.260	22.78	GABION
114	4652563.910	386253.102	22.812	GABION
115	4652562.720	386248.210	22.773	GABION
116	4652568.677	386246.532	22.777	GABION
117	4652574.449	386242.372	22.605	FND-SK
118	4652574.391	386227.605	22.57	FND-SK
119	4652572.651	386216.103	22.413	FND-SK
120	4652569.837	386207.400	22.762	FND-SK
121	4652567.542	386200.049	22.724	FND-SK
122	4652561.318	386202.801	22.42	REZERVUARI
123	4652562.817	386209.225	22.385	REZERVUARI
124	4652566.960	386219.888	22.345	REZERVUARI
125	4652568.641	386230.538	22.316	REZERVUARI
126	4652567.965	386235.867	22.381	REZERVUARI
127	4652568.518	386241.388	22.396	REZERVUARI
128	4652568.585	386246.449	22.284	REZERVUARI
129	4652564.216	386270.714	22.416	REZERVUARI
130	4652561.730	386281.427	22.359	REZERVUARI
131	4652561.404	386294.666	22.313	REZERVUARI

132	4652560.698	386302.527	22.439	REZERVUARI
133	4652560.136	386312.186	22.398	REZERVUARI
134	4652554.536	386318.391	22.322	REZERVUARI
135	4652551.670	386325.076	22.251	REZERVUARI
136	4652550.130	386333.551	22.377	REZERVUARI
137	4652548.838	386336.220	22.433	REZERVUARI
138	4652546.499	386341.706	22.383	REZERVUARI
139	4652547.175	386349.176	24.28	REZERVUARI
140	4652549.471	386347.217	25.368	TERREN
141	4652549.951	386344.730	24.727	TERREN
142	4652550.309	386340.200	23.774	TERREN
143	4652551.738	386336.995	23.019	TERREN
144	4652554.952	386330.754	23.64	TERREN
145	4652556.618	386327.422	23.68	TERREN
146	4652560.888	386319.231	23.148	TERREN
147	4652565.514	386315.587	23.054	TERREN
148	4652566.781	386307.912	22.588	TERREN
149	4652575.269	386308.171	23.023	TERREN
150	4652582.437	386308.595	24.157	TERREN
151	4652588.023	386313.045	24.131	GABION
152	4652587.095	386309.978	24.024	GABION
153	4652587.980	386310.027	24.06	GABION
154	4652586.227	386306.881	23.923	GABION
155	4652587.112	386306.664	23.945	GABION
156	4652580.547	386301.187	23.845	TERREN
157	4652574.549	386300.516	22.978	TERREN
158	4652570.058	386287.532	22.824	TERREN
159	4652577.081	386286.103	23.059	TERREN
160	4652579.195	386271.871	23.163	TERREN
161	4652570.039	386273.046	22.785	TERREN
162	4652581.081	386272.776	23.765	GABION
163	4652582.224	386272.892	23.813	GABION
164	4652580.861	386277.524	23.736	GABION
165	4652583.443	386266.695	24.776	GABION
166	4652584.392	386266.860	24.757	GABION
167	4652581.879	386277.294	24.741	GABION
168	4652582.821	386277.276	24.718	GABION
169	4652583.058	386288.041	24.761	GABION
170	4652583.968	386287.774	24.75	GABION
171	4652588.870	386312.867	25.274	GABION
172	4652592.309	386315.158	27.569	GABION
173	4652591.223	386315.511	27.54	GABION
174	4652586.185	386292.829	26.866	GABION
175	4652587.212	386292.605	26.894	GABION
176	4652584.004	386279.269	26.833	GABION

177	4652584.946	386279.349	26.783	GABION
178	4652585.466	386267.190	26.845	GABION
179	4652586.355	386267.395	26.805	GABION
180	4652593.000	386317.711	28.544	GABION
181	4652587.065	386265.144	26.736	GABION
182	4652587.120	386262.801	26.782	GABION
183	4652588.161	386263.082	26.754	GABION
184	4652592.326	386253.920	28.119	GABION
185	4652593.030	386254.638	28.106	GABION
186	4652594.173	386254.512	29.063	GABION
187	4652593.331	386254.169	29.048	GABION
188	4652590.618	386262.257	28.823	GABION
189	4652589.689	386261.949	28.815	GABION
190	4652587.509	386267.680	28.814	GABION
191	4652588.405	386267.915	28.821	GABION
192	4652586.733	386272.120	28.856	GABION
193	4652587.582	386272.266	28.85	GABION
194	4652586.325	386282.785	28.769	GABION
195	4652587.244	386282.720	28.749	GABION
196	4652590.431	386301.861	29.068	GABION
197	4652591.281	386301.747	29.082	GABION
198	4652594.125	386318.234	29.682	GABION
199	4652594.797	386316.901	29.6331	GABION
200	4652600.993	386310.633	28.136	TERREN
201	4652601.537	386306.919	27.01	TERREN
202	4652600.366	386296.603	25.142	TERREN
203	4652600.881	386289.599	24.92	TERREN
204	4652604.451	386276.216	24.428	TERREN
205	4652610.000	386274.249	24.316	TERREN
206	4652620.881	386278.326	23.817	RRETHIM
207	4652627.223	386268.822	23.527	RRETHIM
208	4652625.349	386261.471	23.546	TERREN
209	4652618.821	386253.702	24.04	TERREN
210	4652624.408	386241.182	27.057	TERREN
211	4652632.469	386237.946	27.087	TERREN
212	4652633.533	386228.845	28.175	TERREN
213	4652632.804	386223.250	28.152	TERREN
214	4652618.181	386238.382	27.92	TERREN
215	4652607.908	386248.906	27.276	TERREN
216	4652603.145	386253.801	27.243	TERREN
217	4652602.021	386257.669	27.179	TERREN
218	4652600.195	386257.489	27.554	TERREN
219	4652598.354	386266.781	27.026	TERREN
220	4652595.342	386267.996	26.994	TERREN
221	4652593.838	386277.717	26.947	TERREN

222	4652599.721	386278.591	26.996	TERREN
223	4652598.846	386285.171	27.082	TERREN
224	4652595.292	386286.417	27.011	TERREN
225	4652598.591	386293.542	25.599	TERREN
226	4652601.091	386301.040	25.558	TERREN
227	4652601.940	386307.089	27.044	RRETHIM
228	4652605.334	386312.424	27.481	RRETHIM
229	4652612.317	386320.585	29.871	RRETHIM
230	4652610.237	386322.048	30.05	RRUGA
231	4652609.469	386325.624	30.25	RRUGA
232	4652616.396	386325.482	30.813	RRUGA
233	4652614.690	386327.497	30.566	RRUGA
234	4652591.259	386320.582	30.433	RRUGA
235	4652578.984	386327.008	32.84	RRUGA
236	4652567.470	386333.366	34.039	RRUGA
237	4652560.977	386337.601	34.009	RRUGA
238	4652563.028	386347.114	35.085	RRUGA
239	4652562.313	386355.170	36.031	RRUGA
240	4652559.353	386355.728	36.02	RRUGA
241	4652559.719	386365.356	36.554	RRUGA
242	4652561.980	386372.265	36.99	RRUGA
243	4652581.164	386348.005	39.638	RRUGA
244	4652589.435	386340.588	40.871	RRUGA
245	4652595.003	386341.631	41.597	RRUGA
246	4652614.161	386346.749	43.201	RRUGA
247	4652579.063	386358.463	38.793	RRUGA
248	4652575.330	386363.511	38.155	RRUGA
249	4652564.594	386385.351	36.798	TERREN
250	4652567.110	386390.307	36.745	TERREN
251	4652574.107	386392.448	36.462	TERREN
252	4652572.623	386394.663	35.182	TERREN
253	4652574.614	386392.470	36.672	MUR-BETONI
254	4652574.229	386392.970	36.494	MUR-BETONI
255	4652574.305	386393.010	37.041	MUR-BETONI
256	4652574.611	386392.469	37.059	MUR-BETONI
257	4652580.038	386396.986	36.568	MUR-BETONI
258	4652579.340	386397.604	36.544	MUR-BETONI
259	4652582.023	386400.654	36.239	MUR-BETONI
260	4652582.465	386400.047	36.289	MUR-BETONI
261	4652585.965	386405.270	36.071	MUR-BETONI
262	4652586.135	386405.116	35.697	MUR-BETONI
263	4652583.399	386412.473	35.652	MUR-BETONI
264	4652584.034	386412.664	35.648	MUR-BETONI
265	4652583.599	386414.282	35.565	MUR-BETONI
266	4652583.200	386414.039	35.58	MUR-BETONI

267	4652583.327	386414.448	35.592	MUR-BETONI
268	4652585.305	386417.190	35.626	MUR-BETONI
269	4652585.042	386417.229	35.661	MUR-BETONI
270	4652585.387	386417.162	34.978	MUR-BETONI
271	4652585.375	386417.393	34.97	URA
272	4652579.537	386432.978	34.99	URA
273	4652579.122	386432.782	34.754	URA
274	4652579.153	386432.795	34.767	MUR-BETONI
275	4652579.220	386432.826	35.546	MUR-BETONI
276	4652579.498	386432.911	35.546	MUR-BETONI
277	4652578.984	386434.255	35.508	MUR-BETONI
278	4652578.696	386433.822	35.534	MUR-BETONI
279	4652576.109	386433.792	35.534	MUR-BETONI
280	4652576.270	386433.526	35.524	MUR-BETONI
281	4652575.952	386434.096	35.567	MUR-BETONI
282	4652576.024	386434.205	35.079	MUR-BETONI
283	4652578.978	386434.333	35.004	MUR-BETONI
284	4652575.365	386433.714	35.536	MUR-BETONI
285	4652571.517	386436.658	35.514	MUR-BETONI
286	4652571.995	386437.482	35.489	MUR-BETONI
287	4652569.896	386439.880	35.498	MUR-BETONI
288	4652569.416	386439.643	35.475	MUR-BETONI
289	4652568.058	386442.603	35.58	MUR-BETONI
290	4652567.644	386442.310	35.609	MUR-BETONI
291	4652567.308	386443.324	35.591	MUR-BETONI
292	4652567.044	386443.064	35.559	MUR-BETONI
293	4652566.930	386442.332	35.557	MUR-BETONI
294	4652540.474	386442.944	35.559	MUR-BETONI
295	4652540.535	386443.056	35.307	MUR-BETONI
296	4652540.487	386442.193	35.56	MUR-BETONI
297	4652531.908	386442.846	35.556	B2
298	4652527.186	386442.900	35.573	MUR-BETONI
299	4652527.144	386442.167	35.564	MUR-BETONI
300	4652526.957	386442.846	34.588	MUR-BETONI
301	4652526.012	386442.842	34.609	MUR-BETONI
302	4652526.007	386442.875	35.554	MUR-BETONI
303	4652525.946	386442.125	35.562	MUR-BETONI
304	4652511.626	386442.921	35.576	BM6
305	4652511.121	386443.097	35.587	MUR-BETONI
306	4652511.442	386442.218	35.582	MUR-BETONI
307	4652495.798	386431.925	35.593	MUR-BETONI
308	4652496.364	386431.373	35.591	MUR-BETONI
309	4652480.511	386420.948	35.652	MUR-BETONI
310	4652480.401	386420.957	34.992	MUR-BETONI
311	4652480.959	386420.358	35.648	MUR-BETONI

312	4652481.201	386419.895	34.116	MUR-BETONI
313	4652478.508	386420.359	34.355	TERREN
314	4652476.146	386422.887	34.246	TERREN
315	4652473.887	386423.927	34.441	TERREN
316	4652471.629	386413.887	33.798	TERREN
317	4652463.133	386407.919	33.447	TERREN
318	4652457.665	386408.862	33.806	TERREN
319	4652452.656	386409.582	34.708	TERREN
320	4652449.917	386410.992	35.513	TERREN
321	4652455.067	386419.842	36.426	TERREN
322	4652457.609	386418.938	36.039	TERREN
323	4652460.136	386417.825	35.309	TERREN
324	4652463.732	386415.579	34.153	TERREN
325	4652466.996	386413.313	33.664	TERREN
326	4652474.958	386420.984	34.203	TERREN
327	4652470.909	386427.454	35.483	TERREN
328	4652473.265	386430.450	36.175	TERREN
329	4652471.831	386431.286	36.347	RRUGA
330	4652470.006	386434.610	36.597	RRUGA
331	4652459.507	386429.703	37.124	RRUGA
332	4652460.453	386426.119	37.074	RRUGA
333	4652447.273	386416.268	37.313	RRUGA
334	4652444.283	386419.116	37.479	RRUGA
335	4652438.851	386413.721	37.794	RRUGA
336	4652435.384	386405.838	38.537	RRUGA
337	4652440.147	386403.776	38.136	RRUGA
338	4652441.610	386394.799	38.632	RRUGA
339	4652437.442	386392.819	38.885	RRUGA
340	4652435.488	386391.496	39.201	TERREN
341	4652443.597	386394.502	38.591	TERREN
342	4652444.666	386397.272	37.599	MUR-BETONI
343	4652444.468	386397.366	38.297	MUR-BETONI
344	4652443.764	386397.102	38.302	MUR-BETONI
345	4652443.376	386402.696	37.844	MUR-BETONI
346	4652443.545	386402.738	37.432	MUR-BETONI
347	4652443.847	386404.633	36.915	MUR-BETONI
348	4652443.717	386404.699	37.716	MUR-BETONI
349	4652445.620	386409.976	37.585	MUR-BETONI
350	4652448.492	386413.131	37.577	MUR-BETONI
351	4652448.665	386412.772	36.19	MUR-BETONI
352	4652436.731	386412.495	37.616	RRETHIM
353	4652439.506	386416.367	37.747	RRETHIM
354	4652449.199	386423.091	37.335	RRETHIM
355	4652460.940	386430.879	37.17	RRETHIM
356	4652463.305	386433.427	37.135	RRETHIM

357	4652464.614	386436.655	37.385	RRETHIM
358	4652465.111	386437.650	37.164	RRETHIM
359	4652468.837	386435.884	37.022	RRETHIM
360	4652470.889	386438.176	37.031	RRETHIM
361	4652473.335	386440.824	36.406	RRETHIM
362	4652505.719	386462.255	36.709	RRETHIM
363	4652506.356	386461.931	36.702	TUBO
364	4652507.218	386462.416	36.692	TUBO
365	4652510.015	386455.964	35.983	TUBO
366	4652514.063	386447.229	35.443	TUBO
367	4652517.287	386443.805	35.017	TUBO
368	4652516.202	386443.018	35.521	MUR-BETONI
369	4652516.242	386444.356	35.513	MUR-BETONI
370	4652527.425	386444.270	35.479	MUR-BETONI
371	4652527.196	386444.088	35.51	MUR-BETONI
372	4652527.210	386443.003	35.558	MUR-BETONI
373	4652527.342	386442.980	35.564	MUR-BETONI
374	4652521.215	386444.354	35.478	MUR-BETONI
375	4652521.219	386444.178	35.496	MUR-BETONI
376	4652516.552	386444.183	35.51	MUR-BETONI
377	4652530.010	386468.179	36.829	RRETHIM
378	4652537.609	386467.064	36.659	RRETHIM
379	4652543.204	386460.242	35.471	TERREN
380	4652541.809	386458.324	35.573	TERREN
381	4652540.573	386454.511	35.349	TERREN
382	4652520.280	386456.283	35.793	TERREN
383	4652587.235	386292.507	27.866	GABION
384	4652588.187	386292.283	27.894	GABION
385	4652585.000	386279.349	27.833	GABION
386	4652586.250	386282.748	27.783	GABION
387	4652586.400	386267.403	27.845	GABION
388	4652586.709	386272.119	27.805	GABION
389	4652587.479	386267.664	27.736	GABION
390	4652588.463	386262.589	27.782	GABION
391	4652589.136	386262.760	27.754	GABION
392	4652587.446	386306.985	24.923	GABION
393	4652588.331	386306.768	24.945	GABION
394	4652582.300	386272.880	24.765	GABION
395	4652583.443	386272.996	24.813	GABION
396	4652582.080	386277.628	24.736	GABION
397	4652584.662	386266.799	25.776	GABION
398	4652585.465	386266.912	25.757	GABION
399	4652583.098	386277.398	25.741	GABION
400	4652584.277	386288.145	25.761	GABION
401	4652585.187	386287.878	25.75	GABION

402	4652590.089	386312.971	26.274	GABION
403	4652588.314	386310.082	25.024	GABION
404	4652516.512	386442.845	35.518	MUR-BETONI
405	4652587.104	386265.159	27.774	GABION
406	4652593.871	386317.514	28.569	GABION
407	4652589.199	386310.131	25.06	GABION
408	4652589.241	386313.149	25.131	GABION
409	4652516.512	386442.845	35.518	MUR-BETONI
410	4652516.488	386443.040	35.526	MUR-BETONI
411	4652549.841	386355.418	22.383	REZERVUARI
412	4652549.572	386363.780	22.383	REZERVUARI
413	4652548.089	386360.611	22.383	REZERVUARI
414	4652550.448	386369.108	22.383	REZERVUARI
415	4652552.223	386373.581	22.383	REZERVUARI
416	4652552.356	386378.813	22.383	REZERVUARI
417	4652552.306	386385.572	22.383	REZERVUARI
418	4652556.371	386391.635	22.383	REZERVUARI
419	4652563.746	386394.243	22.383	REZERVUARI
420	4652570.057	386399.522	22.383	REZERVUARI
421	4652574.845	386402.878	22.383	REZERVUARI
422	4652578.836	386406.916	22.383	REZERVUARI
423	4652570.136	386428.741	22.383	REZERVUARI
424	4652562.424	386430.363	22.383	REZERVUARI
425	4652560.849	386433.387	22.383	REZERVUARI
426	4652554.113	386434.156	22.383	REZERVUARI
427	4652545.843	386428.915	22.383	REZERVUARI
428	4652537.029	386423.101	22.383	REZERVUARI
429	4652529.438	386418.799	22.383	REZERVUARI
430	4652524.947	386419.592	22.383	REZERVUARI
431	4652520.864	386424.280	22.383	REZERVUARI
432	4652515.668	386418.277	22.383	REZERVUARI
433	4652510.084	386419.997	22.383	REZERVUARI
434	4652507.422	386426.288	22.383	REZERVUARI
435	4652493.542	386419.989	22.383	REZERVUARI
436	4652495.138	386407.423	22.383	REZERVUARI
437	4652483.949	386396.864	22.383	REZERVUARI
438	4652477.143	386381.237	22.383	REZERVUARI
439	4652480.889	386366.578	22.383	REZERVUARI
440	4652484.845	386347.613	22.383	REZERVUARI
441	4652478.602	386332.741	22.383	REZERVUARI
442	4652469.024	386310.722	22.383	REZERVUARI
443	4652546.475	386367.963	20.883	REZERVUARI
444	4652544.992	386364.794	20.883	REZERVUARI
445	4652445.801	386409.953	37.173	MUR-BETONI
446	4652544.479	386360.758	20.883	REZERVUARI

446	4652544.479	386360.758	20.883	REZERVUARI
447	4652547.351	386373.291	20.883	REZERVUARI
448	4652549.126	386377.764	20.883	REZERVUARI
449	4652549.260	386382.996	20.883	REZERVUARI
450	4652549.209	386389.755	20.883	REZERVUARI
451	4652553.275	386395.818	20.883	REZERVUARI
452	4652560.650	386398.426	20.883	REZERVUARI
453	4652566.961	386403.705	20.883	REZERVUARI
454	4652571.748	386407.061	20.883	REZERVUARI
455	4652575.739	386411.099	20.883	REZERVUARI
456	4652539.987	386363.444	22.383	REZERVUARI
457	4652542.024	386372.309	22.383	REZERVUARI
458	4652540.541	386369.139	22.383	REZERVUARI
459	4652542.900	386377.636	22.383	REZERVUARI
460	4652544.675	386382.110	22.383	REZERVUARI
461	4652544.809	386387.342	22.383	REZERVUARI
462	4652544.758	386394.101	22.383	REZERVUARI
463	4652548.824	386400.163	22.383	REZERVUARI
464	4652556.199	386402.771	22.383	REZERVUARI
465	4652562.510	386408.050	22.383	REZERVUARI
466	4652567.297	386411.406	22.383	REZERVUARI
467	4652571.288	386415.444	22.383	REZERVUARI

PËRGATITI:

ING. TOPOGRAF MAKSIM ÇARÇANI



PROJEKTUES

“HE&SK 11” sh.p.k

ADMINISTRATORI

ING. FESTIM BREGASI

