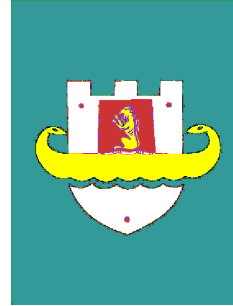


BASHKIA DURRËS



BASHKIA DURRËS

# PROJEKT ZBATIMI


RIKONSTRUKSION I RRUGES "KENETE +  
ADRIATIKU" (SEKTORI RINIA), DURRES

DURRËS, 2023



PLANI I RILEVIMIT I RRUGES "KENETE + ADRIATIKU"  
(SEKTORI RINIA), DURRES SHK 1 : 2000



<b>BASHKIA DURRES</b>  <b>NJESIA E PROJEKTIT DHE INFRASTRUKTURES</b>		<b>OBJEKTI:</b> RIKONSTRUKSION I RRUGES "KENETE + ADRIATIKU" (SEKTORI RINIA)		<b>EMERTIMI I FLETES:</b> PLANIMETRIA E RRUGES "KENETE + ADRIATIKU"	
<b>VENDODHJA:</b> DURRES	<b>PROJEKTI:</b> ARKITEKTONIK	<b>GRUPI PROJEKTIMIT:</b>	<b>EMER MBIEMER:</b> Ing. Enli Kaculi	<b>FIRMA:</b>	DATA: 01/2023
<b>FAZA E PROJEKTIT:</b> PROJEKT ZBATIMI	<b>EMERTIMI I FLETES:</b> PLANIMETRIA E RRUGES "KENETE + ADRIATIKU"		SHKALLA 1:2000	No. I FLETES	<b>A01</b>




PLANI I RILEVIMIT I RRUGES "KENETE + ADRIATIKU"  
(SEKTORI RINIA), DURRES SHK 1 : 2000



Legjenda

 Ortofoto 2015 20  
cm

BASHKIA DURRES		OBJEKTI: RIKONSTRUKSION I RRUGES "KENETE + ADRIATIKU" (SEKTORI RINIA)		
 NJESIA E PROJEKTIT DHE INFRASTRUKTURES	VENDODHJA : DURRES	GRUPI PROJEKTIMIT :  EMER MBIEMER Ing. Enli Kaculi	FIRMA  EMERTIMI I FLETES : PLANIMETRIA E RRUGES "KENETE + ADRIATIKU"	
	PROJEKTI : ARKITEKTONIK			DATA: 01/2023    SHKALLA 1:2000
	FAZA E PROJEKTIT : PROJEKT ZBATIMI			No. I FLETES <b>A02</b>










PLANI I RILEVIMIT I RRUGES "KENETE + ADRIATIKU"  
 (SEKTORI RINIA), AKSI 20-25; 29-32. DURRES SHK 1 : 200

Aksi 20-25  
 Aksi 29-32




BASHKIA DURRES  NJESIA E PROJEKTIT DHE INFRASTRUKTURES		OBJEKTI: RIKONSTRUKSION I RRUGES "KENETE + ADRIATIKU" (SEKTORI RINIA)		EMERTIMI I FLETES: PLANIMETRIA E RRUGES "KENETE + ADRIATIKU"	
VENDODHJA : DURRES		EMER MBIEMER Ing. Enli Kaculi		FIRMA	
PROJEKTI : ARKITEKTONIK		GRUPI PROJEKTIMIT :		DATA: 01/2023    SHKALLA 1:200	
FAZA E PROJEKTIT : PROJEKT ZBATIMI		No. I FLETES		A04	



PLANI I RILEVIMIT I RRUGES "KENETE + ADRIATIKU"  
 (SEKTORI RINIA), AKSI 8-15; 33-40. DURRES SHK 1 : 200

Aksi 8-15  
 Aksi 33-40




BASHKIA DURRES  NJESIA E PROJEKTIT DHE INFRASTRUKTURES		OBJEKTI: RIKONSTRUKSION I RRUGES "KENETE + ADRIATIKU" (SEKTORI RINIA)		EMERTIMI I FLETES : PLANIMETRIA E RRUGES "KENETE + ADRIATIKU"	
VENDODHJA : DURRES		EMER MBIEMER Ing. Enli Kaculi		FIRMA	
PROJEKTI : ARKITEKTONIK		GRUPI PROJEKTIMIT :		DATA: 01/2023    SHKALLA 1:200	
FAZA E PROJEKTIT : PROJEKT ZBATIMI		No. I FLETES		A05	



PLANI I RILEVIMIT I RRUGES "KENETE + ADRIATIKU"  
 (SEKTORI RINIA), AKSI 40-47. DURRES SHK 1 : 200

Aksi 40-47



BASHKIA DURRES  NJESIA E PROJEKTIT DHE INFRASTRUKTURES		OBJEKTI: RIKONSTRUKSION I RRUGES "KENETE + ADRIATIKU" (SEKTORI RINIA)		EMERTIMI I FLETES : PLANIMETRIA E RRUGES "KENETE + ADRIATIKU"	
VENDODHJA : DURRES		EMER MBIEMER Ing. Enli Kaculi		FIRMA	
PROJEKTI : ARKITEKTONIK		GRUPI PROJEKTIMIT :		DATA: 01/2023 SHKALLA 1:200	
FAZA E PROJEKTIT : PROJEKT ZBATIMI		No. I FLETES		A06	







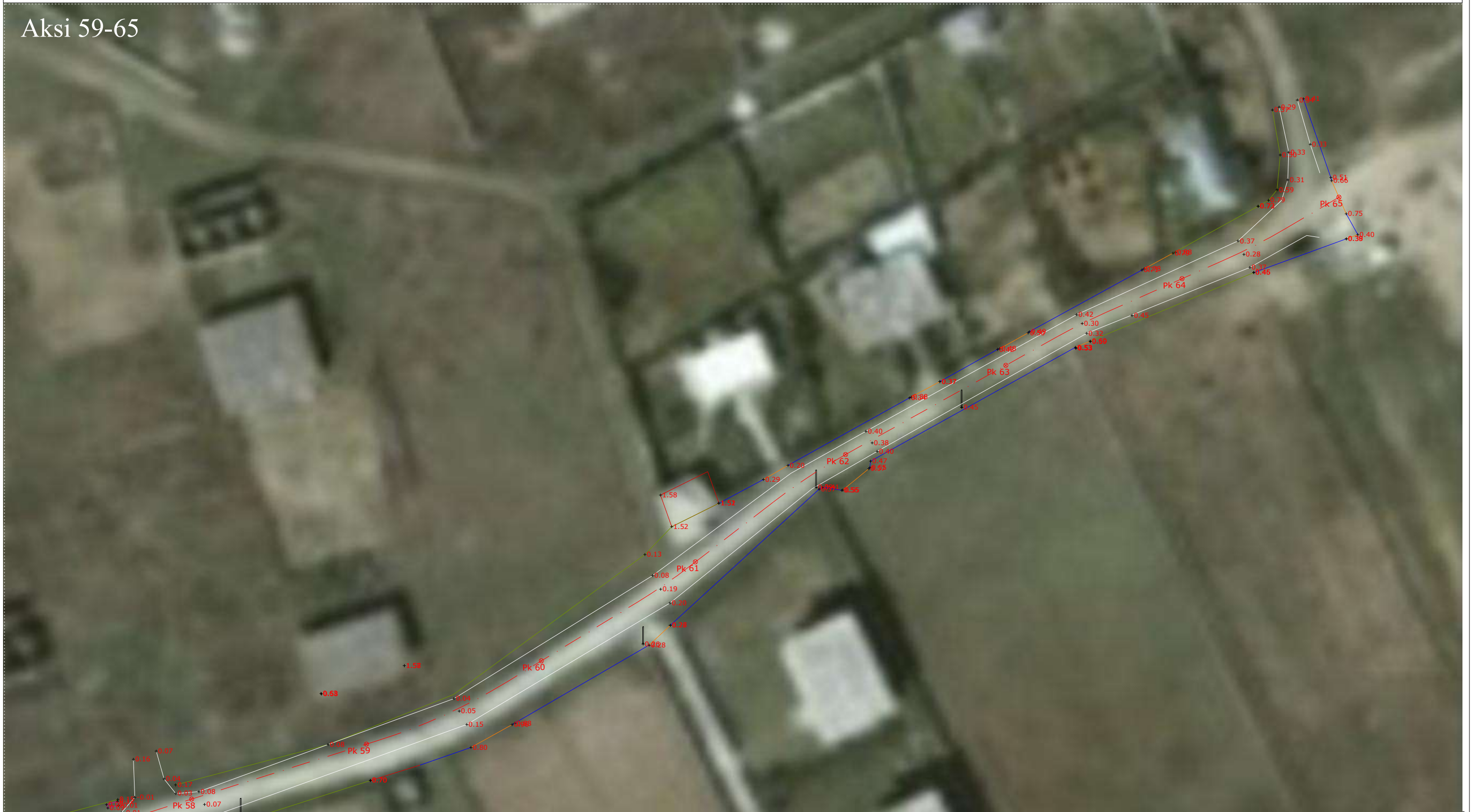



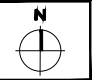




PLANI I RILEVIMIT I RRUGES "KENETE + ADRIATIKU"  
 (SEKTORI RINIA), AKSI 59-65. DURRES SHK 1 : 200

Aksi 59-65




 BASHKIA DURRES NJESIA E PROJEKTIT DHE INFRASTRUKTURES	OBJEKTI: RIKONSTRUKSION I RRUGES "KENETE + ADRIATIKU" (SEKTORI RINIA)	EMERTIMI I FLETES : PLANIMETRIA E RRUGES "KENETE + ADRIATIKU"	
	VENDODHJA : DURRES	EMER MBIEMER Ing. Enli Kaculi	FIRMA
PROJEKTI: ARKITEKTONIK	GRUPI PROJEKTIMIT :	No. I FLETES <b>A09</b>	
FAZA E PROJEKTIT : PROJEKT ZBATIMI			



PLANIMETRIA E PERGJITHSHME E RRUGES "KENETE + ADRIATIKU" (SEKTORI RINIA), DURRES SHK 1 : 2000



<b>BASHKIA DURRES</b>  NJESIA E PROJEKTIT DHE INFRASTRUKTURES		<b>OBJEKTI:</b> RIKONSTRUKSION I RRUGES "KENETE + ADRIATIKU" (SEKTORI RINIA)		<b>EMERTIMI I FLETES:</b> PLANIMETRIA E RRUGES "KENETE + ADRIATIKU"	
<b>VENDODHJA:</b> DURRES	<b>PROJEKTI:</b> ARKITEKTONIK	<b>GRUPI PROJEKTIMIT:</b>	<b>EMER MBIEMER:</b> Ing. Eni Turkeshi	<b>FIRMA:</b> Ark. Bianca Madhi Ark. Alba Kokomani	DATA: 03/2023
<b>FAZA E PROJEKTIT:</b> PROJEKT ZBATIMI	<b>EMERTIMI I FLETES:</b> PLANIMETRIA E RRUGES "KENETE + ADRIATIKU"		SHKALLA 1:2000		No. I FLETES <b>A10</b>


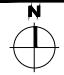


PLANIMETRIA E PERGJITHSHME E RRUGES "KENETE + ADRIATIKU" (SEKTORI RINIA), DURRES SHK 1 : 2000



Legjenda

 Ortofoto 2015 20 cm


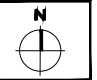
BASHKIA DURRES		OBJEKTI: RIKONSTRUKSION I RRUGES "KENETE + ADRIATIKU" (SEKTORI RINIA)	
 NJESIA E PROJEKTIT DHE INFRASTRUKTURES	VENDODHJA : DURRES	GRUPI PROJEKTIMIT : EMER MBIEMER Ing. Eni Turkeshi Ark. Bianka Madhi Ark. Alba Kokomani	FIRMA
	PROJEKTI : ARKITEKTONIK		EMERTIMI I FLETES : PLANIMETRIA E RRUGES "KENETE + ADRIATIKU"
	FAZA E PROJEKTIT : PROJEKT ZBATIMI		DATA: 01/2023    SHKALLA 1:2000 No. I FLETES <b>A11</b>
			



PLANIMETRIA E RRUGES "KENETE + ADRIATIKU"  
(SEKTORI RINIA), AKSI 1-8; 16-19; 26-28. DURRES SHK 1 : 2000

Aksi 1-8  
Aksi 16-19  
Aksi 26-28




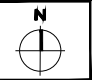
 <b>BASHKIA DURRES</b>		<b>OBJEKTI:</b> RIKONSTRUKSION I RRUGES "KENETE + ADRIATIKU" (SEKTORI RINIA)	
<b>VENDODHJA:</b> DURRES	<b>EMER MBIEMER:</b> Ing. Eni Turkeshi	<b>FIRMA:</b>	<b>EMERTIMI I FLETES:</b> PLANIMETRIA E RRUGES "KENETE + ADRIATIKU"
<b>PROJEKTI:</b> ARKITEKTONIK	<b>GRUPI PROJEKTIMIT:</b> Ark. Blanka Madhi Ark. Alba Kokomani		<b>DATA:</b> 01/2023 <b>SHKALLA:</b> 1:200
<b>FAZA E PROJEKTI:</b> PROJEKT ZBATIMI			<b>No. I FLETES:</b> <b>A12</b>
			



PLANIMETRIA E RRUGES "KENETE + ADRIATIKU"  
(SEKTORI RINIA), AKSI 20-25; 29-32. DURRES SHK 1 : 200

Aksi 20-25  
Aksi 29-32




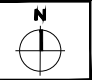
<b>BASHKIA DURRES</b>  <b>NJESIA E PROJEKTIT DHE INFRASTRUKTURES</b>		<b>OBJEKTI:</b> RIKONSTRUKSION I RRUGES "KENETE + ADRIATIKU" (SEKTORI RINIA)		<b>EMERTIMI I FLETES:</b> PLANIMETRIA E RRUGES "KENETE + ADRIATIKU"	
<b>VENDODHJA:</b> DURRES	<b>PROJEKTI:</b> ARKITEKTONIK	<b>EMER MBIEMER:</b> Ing. Eni Turkeshi	<b>FIRMA:</b> Ark. Bianca Madhi Ark. Alba Kokomani	DATA: 01/2023	SHKALLA 1:200
<b>FAZA E PROJEKTIT:</b> PROJEKT ZBATIMI	<b>GRUPI PROJEKTIMIT:</b>	No. I FLETES <b>A13</b>			



PLANIMETRIA E RRUGES "KENETE + ADRIATIKU"  
(SEKTORI RINIA), AKSI 8-15; 33-40. DURRES SHK 1 : 200

Aksi 8-15  
Aksi 33-40





 BASHKIA DURRES NJESIA E PROJEKTIT DHE INFRASTRUKTURES	OBJEKTI: RIKONSTRUKSION I RRUGES "KENETE + ADRIATIKU" (SEKTORI RINIA)	EMERTIMI I FLETES : PLANIMETRIA E RRUGES "KENETE + ADRIATIKU"	
	VENDODHJA : DURRES	EMER MBIEMER Ing. Eni Turkeshi	FIRMA
PROJEKTI : ARKITEKTONIK	GRUPI PROJEKTIMIT : Ark. Bianka Madhi Ark. Alba Kokomani	No. I FLETES <b>A14</b>	
FAZA E PROJEKTIT : PROJEKT ZBATIMI			



PLANIMETRIA E RRUGES "KENETE + ADRIATIKU"  
(SEKTORI RINIA), AKSI 40-47. DURRES SHK 1 : 200

Aksi 40-47

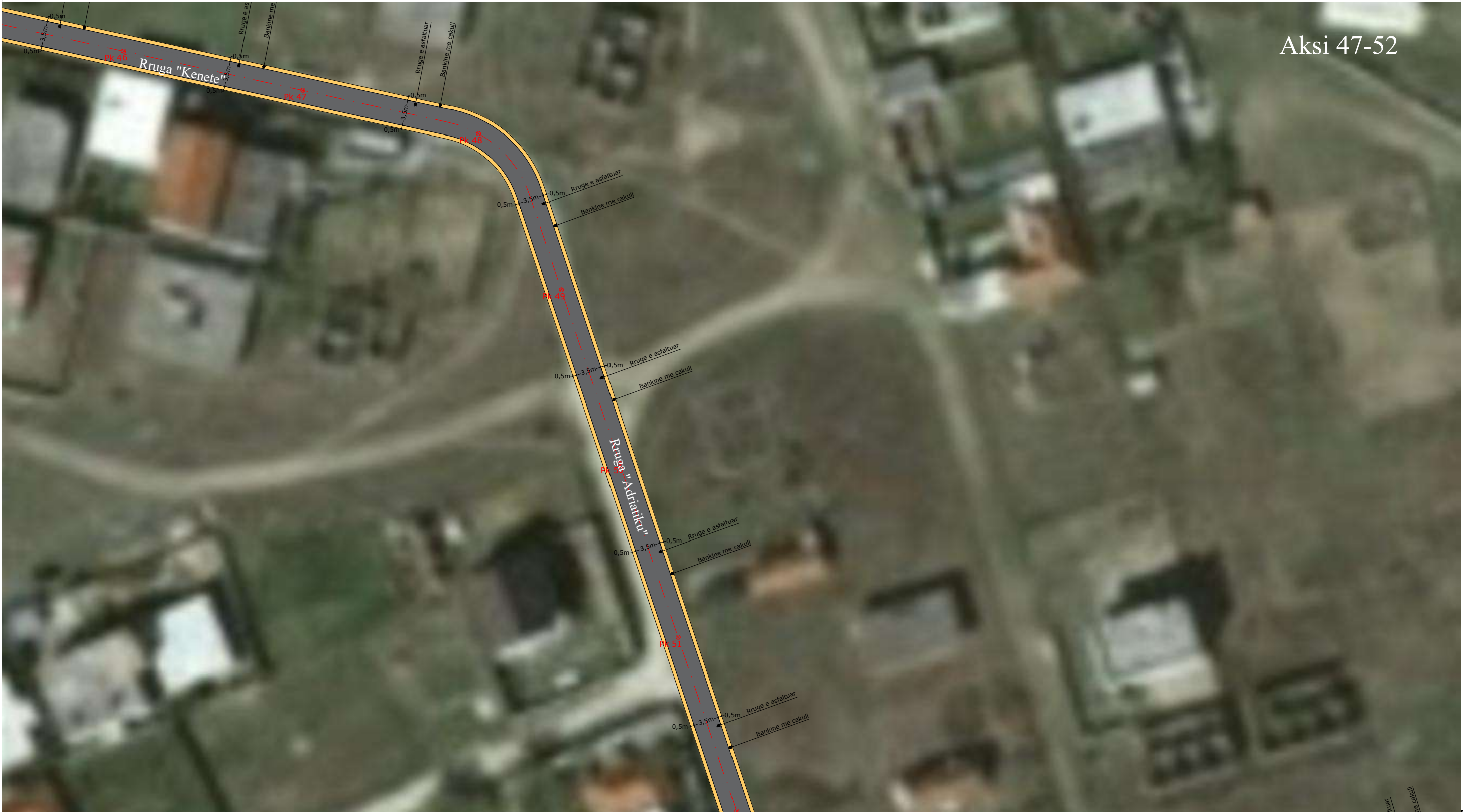




 BASHKIA DURRES NJESIA E PROJEKTIT DHE INFRASTRUKTURES	OBJEKTI: RIKONSTRUKSION I RRUGES "KENETE + ADRIATIKU" (SEKTORI RINIA)	EMERTIMI I FLETES : PLANIMETRIA E RRUGES "KENETE + ADRIATIKU"	
	VENDODHJA : DURRES	EMER MBIEMER Ing. Eni Turkeshi	FIRMA
	PROJEKTI : ARKITEKTONIK	Ark. Bianka Madhi	Ark. Alba Kokomani
	FAZA E PROJEKTIT : PROJEKT ZBATIMI	GRUPI PROJEKTIMIT :	No. I FLETES <b>A15</b>
			DATA: 01/2023    SHKALLA 1:200 



PLANIMETRIA E RRUGES "KENETE + ADRIATIKU"  
(SEKTORI RINIA), AKSI 47-52. DURRES SHK 1 : 200

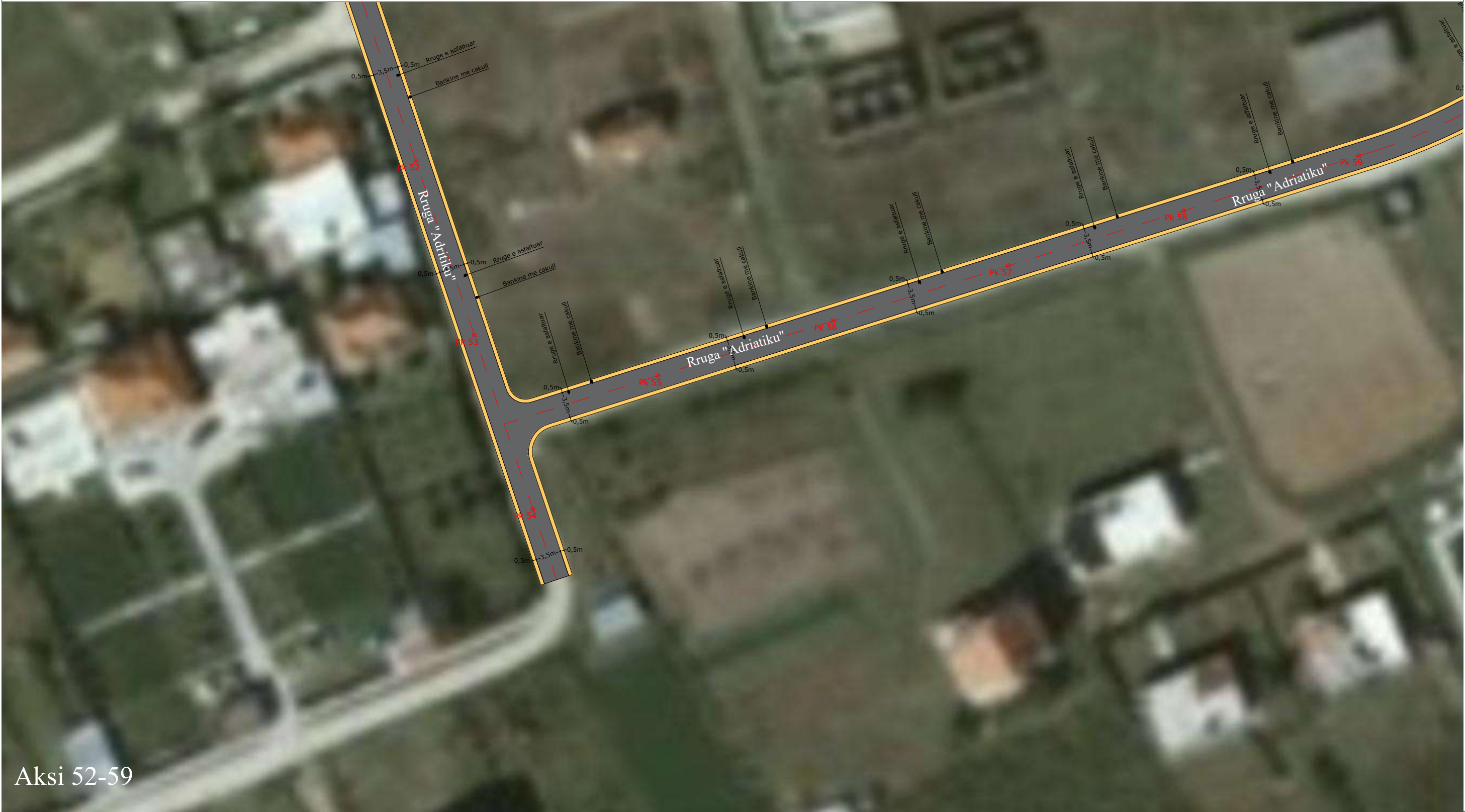
Aksi 47-52




 BASHKIA DURRES NJESIA E PROJEKTIT DHE INFRASTRUKTURES	OBJEKTI: RIKONSTRUKSION I RRUGES "KENETE + ADRIATIKU" (SEKTORI RINIA)	EMERTIMI I FLETES : PLANIMETRIA E RRUGES "KENETE + ADRIATIKU"	
	VENDODHJA : DURRES	EMER MBIEMER Ing. Eni Turkeshi	FIRMA
PROJEKTI: ARKITEKTONIK	ARK. BIANKA MADHI	ARK. ALBA KOKOMANI	No. I FLETES <b>A16</b>
FAZA E PROJEKTIT : PROJEKT ZBATIMI	GRUPI PROJEKTIMIT :	(Empty)	



PLANIMETRIA E RRUGES "KENETE + ADRIATIKU"  
(SEKTORI RINIA), AKSI 52-59. DURRES SHK 1 : 200



Aksi 52-59


<b>BASHKIA DURRES</b>  NJESIA E PROJEKTIT DHE INFRASTRUKTURES		<b>OBJEKTI:</b> RIKONSTRUKSION I RRUGES "KENETE + ADRIATIKU" (SEKTORI RINIA)		<b>EMERTIMI I FLETES:</b> PLANIMETRIA E RRUGES "KENETE + ADRIATIKU"	
<b>VENDODHJA:</b> DURRES	<b>PROJEKTI:</b> ARKITEKTONIK	<b>GRUPI PROJEKTIMIT:</b> EMER MBIEMER Ing. Eni Turkeshi Ark. Bianka Madhi Ark. Alba Kokomani	<b>FIRMA</b>	DATA: 01/2023	SHKALLA 1:200
<b>FAZA E PROJEKTIT:</b> PROJEKT ZBATIMI	No. I FLETES			<b>A17</b>	



PLANIMETRIA E RRUGES "KENETE + ADRIATIKU"  
 (SEKTORI RINIA), AKSI 59-65. DURRES SHK 1 : 200

Aksi 59-65



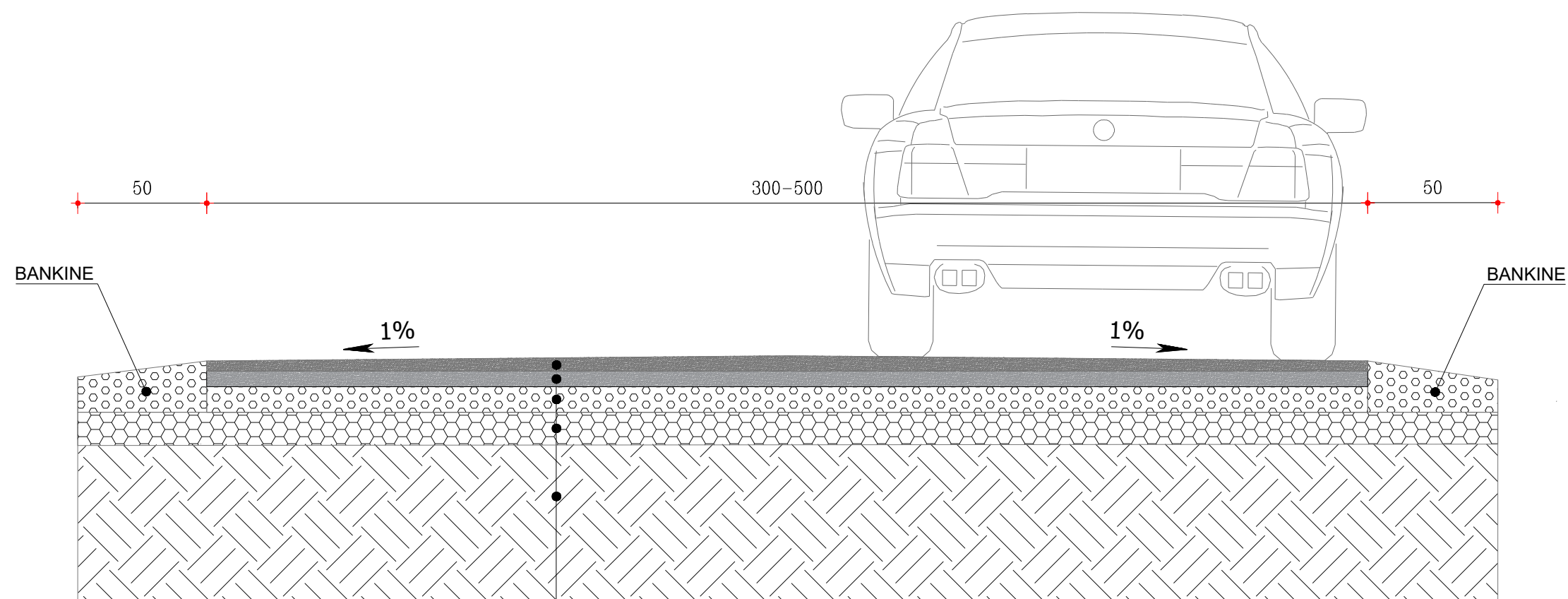
 BASHKIA DURRES NJESIA E PROJEKTIT DHE INFRASTRUKTURES	OBJEKTI: RIKONSTRUKSION I RRUGES "KENETE + ADRIATIKU" (SEKTORI RINIA)	EMERTIMI I FLETES: PLANIMETRIA E RRUGES "KENETE + ADRIATIKU"	
	VENDODHJA: DURRES PROJEKTI: ARKITEKTONIK FAZA E PROJEKTIT: PROJEKT ZBATIMI	EMER MBIEMER: Ing. Eni Turkeshi Ark. Bianca Madhi Ark. Alba Kokomani	FIRMA:   






# PROFILI TERTHOR TIP "LAGJJA ADRIATIKU"

## Km 0+000 - Km 1+586



- ASFALTOBETON 4 CM
- BINDER 6 CM
- STABILIZANT 10 CM
- ÇAKULL MAKINERIE 15 CM
- TOKE NATYRALE E NGJESHUR

 BASHKIA DURRES NJESIA E PROJEKTIT DHE INFRASTRUKTURES	<b>OBJEKTI:</b> RIKONSTRUKSION LAGJJA "ADRIATIKU", KATUND I RI		
	<b>VENDODHJA:</b> DURRES, KATUND I RI	<b>EMER MBIEMER:</b> Ark. Bianka Madhi	<b>FIRMA:</b> _____
	<b>PROJEKTI:</b> ARKITEKTONIK	<b>GRUPI PROJEKTIMIT:</b> Ark. Eni Turkeshi Ark. Alba Kokomani	<b>EMERTIMI I FLETES:</b> PRERJE E LAGJJA "ADRIATIKU"
	<b>FAZA E PROJEKTIT:</b> PROJEKT ZBATIMI	DATA: 03/2023    SHKALLA 1:50	No. I FLETES <b>A19</b>