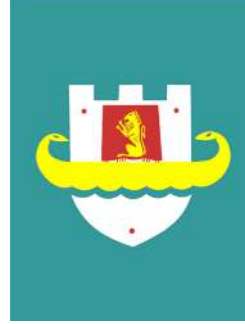


BASHKIA DURRËS



BASHKIA DURRËS


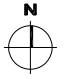
PROJEKT ZBATIMI

RIKONSTRUKSION I RRUGES "KUSHI",
KATUND I RI

DURRËS, 2022


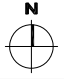
PLANI I RILEVIMIT I RRUGES "KUSHI", KATUND
I RI. SHK 1 : 1000



 BASHKIA DURRES NJESIA E PROJEKTIT DHE INFRASTRUKTURES	OBJEKTI: RIKONSTRUKSION I RRUGES "KUSHI", KATUND I RI	EMER MBIEMER Ing. Enli Kaculi	FIRMA	EMERTIMI I FLETES : PLANI I RILEVIMIT I RRUGES "KUSHI"
	VENDODHJA : DURRES, KATUND I RI	PROJEKTI : ARKITEKTONIK	GRUPI PROJEKTIMIT :	DATA:12/2022
FAZA E PROJEKTIT : PROJEKT ZBATIMI	No. I FLETES	A01		


PLANIMETRIA E PERGJITHSHME E RRUGES
"KUSHI", KATUND I RI. SHK 1 : 1000



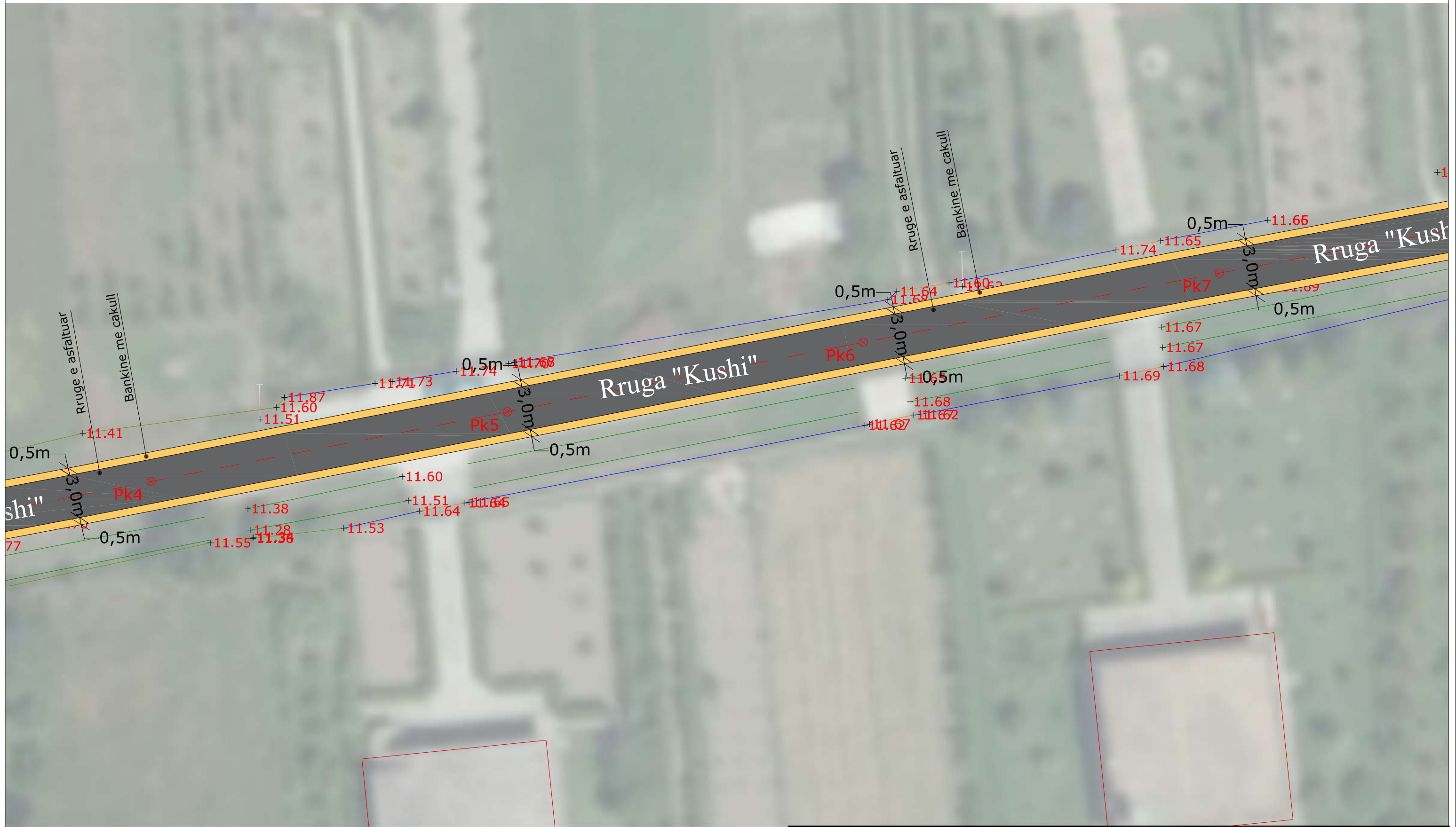
 BASHKIA DURRËS NJESIA E PROJEKTIT DHE INFRASTRUKTURES	OBJEKTI: RIKONSTRUKSION I RRUGES "KUSHI", KATUND I RI	EMERTIMI I FLETES : PLANIMETRIA E RRUGES "KUSHI"	
	VENDODHJA : DURRES, KATUND I RI	EMER MBIEMER Ark. Bianka Madhi	FIRMA
PROJEKTI: ARKITEKTONIK	GRUPI PROJEKTIMIT : Ing. Eni Turkeshi Ing. Jetmir Kurti		No. I FLETES A02
FAZA E PROJEKTTIT : PROJEKT ZBATIMI			


PLANIMETRI AKSI I RRUGES "KUSHI",
KATUND I RI PK-1 DERI PK-4 SHK 1 : 250



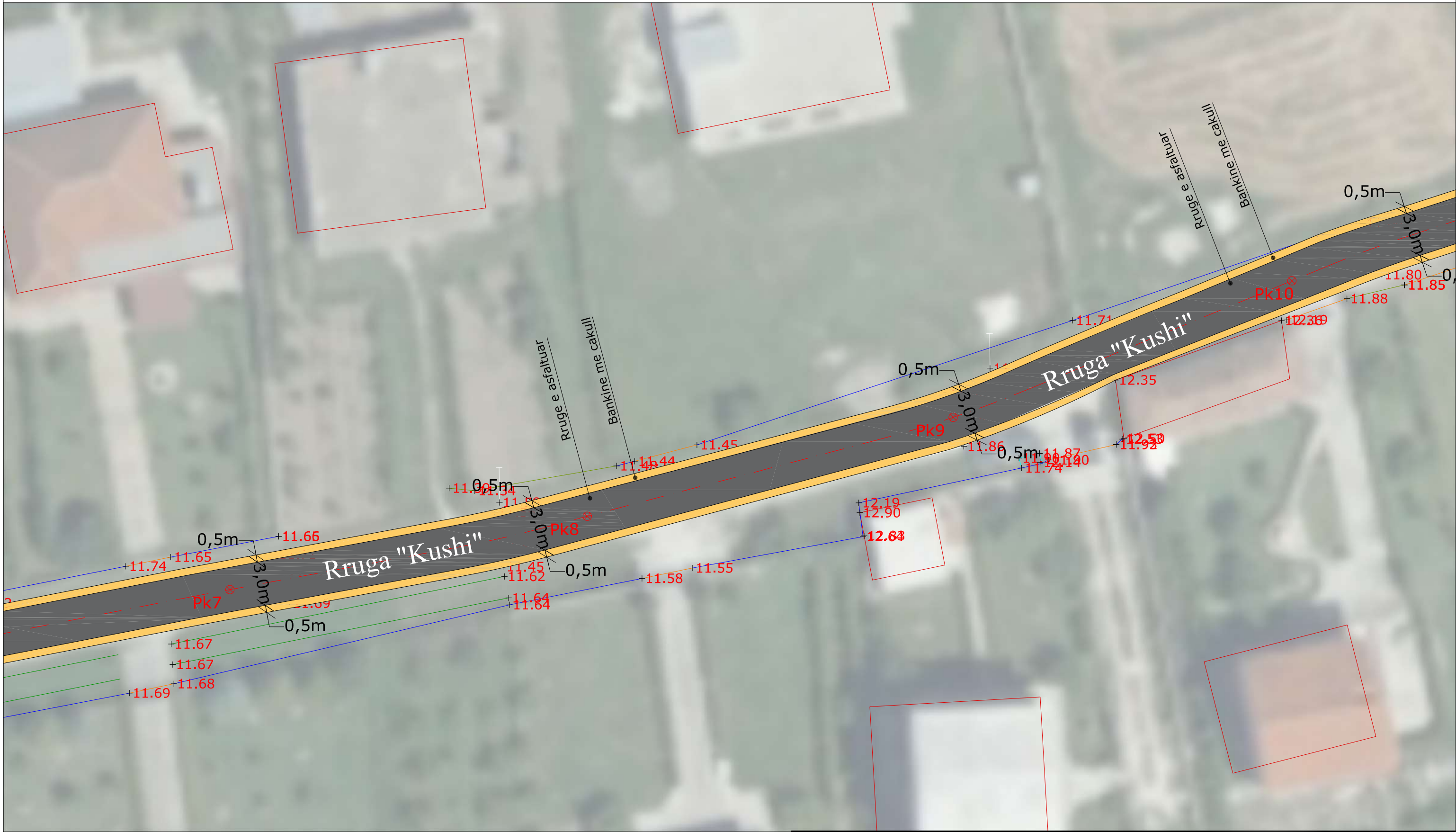
 BASHKIA DURRËS NJESIA E PROJEKTIT DHE INFRASTRUKTURES	OBJEKTI: RIKONSTRUKSION I RRUGES "KUSHI", KATUND I RI	EMERTIMI I FLETES : PLANIMETRIA E RRUGES "KUSHI"	
	VENDODHJA : DURRES, KATUND I RI	EMER MBIEMER Ark. Bianca Madhi	FIRMA
	PROJEKTI : ARKITEKTONIK	Ing. Eni Turkeshi	DATA:12/2022 SHKALLA 1:250
	FAZA E PROJEKTIT : PROJEKT ZBATIMI	Ing. Jetmir Kurti	No. I FLETES A03


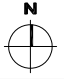
PLANIMETRI. AKSI 2 I RRUGES "KUSHI",
KATUND I RI PK-4 DERI PK-7 SHK 1 : 250



 BASHKIA DURRES NJESIA E PROJEKTIT DHE INFRASTRUKTURES	OBJEKTI: RIKONSTRUKSION I RRUGES "KUSHI", KATUND I RI	EMERTIMI I FLETES : PLANIMETRIA E RRUGES "KUSHI"	
	VENDODHJA : DURRES, KATUND I RI	EMER MBIEMER Ark. Bianka Madhi Ing. Eni Turkeshi Ing. Jetmir Kurti	FIRMA
	PROJEKTI : ARKITEKTONIK	EMERTIMI I FLETES : DATA:12/2022 SHKALLA 1:250	
	FAZA E PROJEKTIT : PROJEKT ZBATIMI	GRUPI PROJEKTIMIT :	
		No. I FLETES A04	


PLANIMETRI. AKSI 3 I RRUGES "KUSHI",
KATUND I RI PK-7 DERI PK-10 SHK 1 : 250



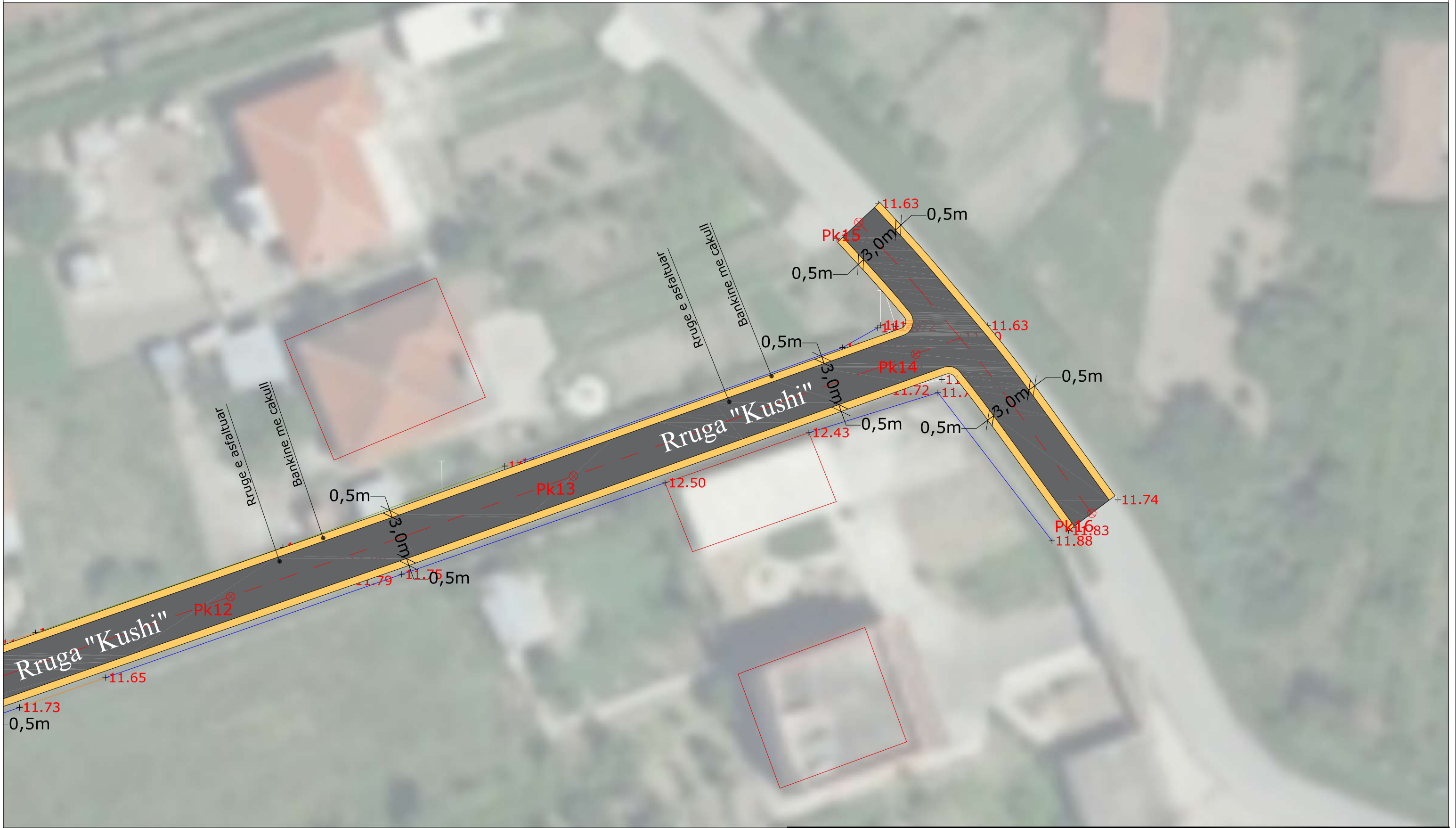
 BASHKIA DURRES NJESIA E PROJEKTIT DHE INFRASTRUKTURES	OBJEKTI: RIKONSTRUKSION I RRUGES "KUSHI", KATUND I RI.	EMERTIMI I FLETES: PLANIMETRIA E RRUGES "KUSHI" DATA: 12/2022 SHKALLA 1:250 No. I FLETES A05			
	VENDODHJA: DURRES, KATUND I RI			EMER MBIEMER: Ark. Blanka Madhi Ing. Eni Turkeshi Ing. Jetmir Kurti	FIRMA:
	PROJEKTI: ARKITEKTONIK			GRUPI PROJEKTIMIT:	
FAZA E PROJEKTIT: PROJEKT ZBATIMI					


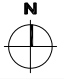
PLANIMETRI. AKSI 4 I RRUGES "KUSHI",
KATUND I RI PK-10 DERI PK-13 SHK 1 : 250



 BASHKIA DURRËS NJESIA E PROJEKTIT DHE INFRASTRUKTURES	OBJEKTI: RIKONSTRUKSION I RRUGES "KUSHI", KATUND I RI	EMERTIMI I FLETES : PLANIMETRIA E RRUGES "KUSHI"	
	VENDODHJA : DURRES, KATUND I RI	EMER MBIEMER Ark. Bianca Madhi Ing. Eni Turkeshi Ing. Jetmir Kurti	FIRMA
	PROJEKTI : ARKITEKTONIK	GRUPI PROJEKTIMIT :	DATA:12/2022 SHKALLA 1:250
FAZA E PROJEKTIT : PROJEKT ZBATIMI		No. I FLETES A06	

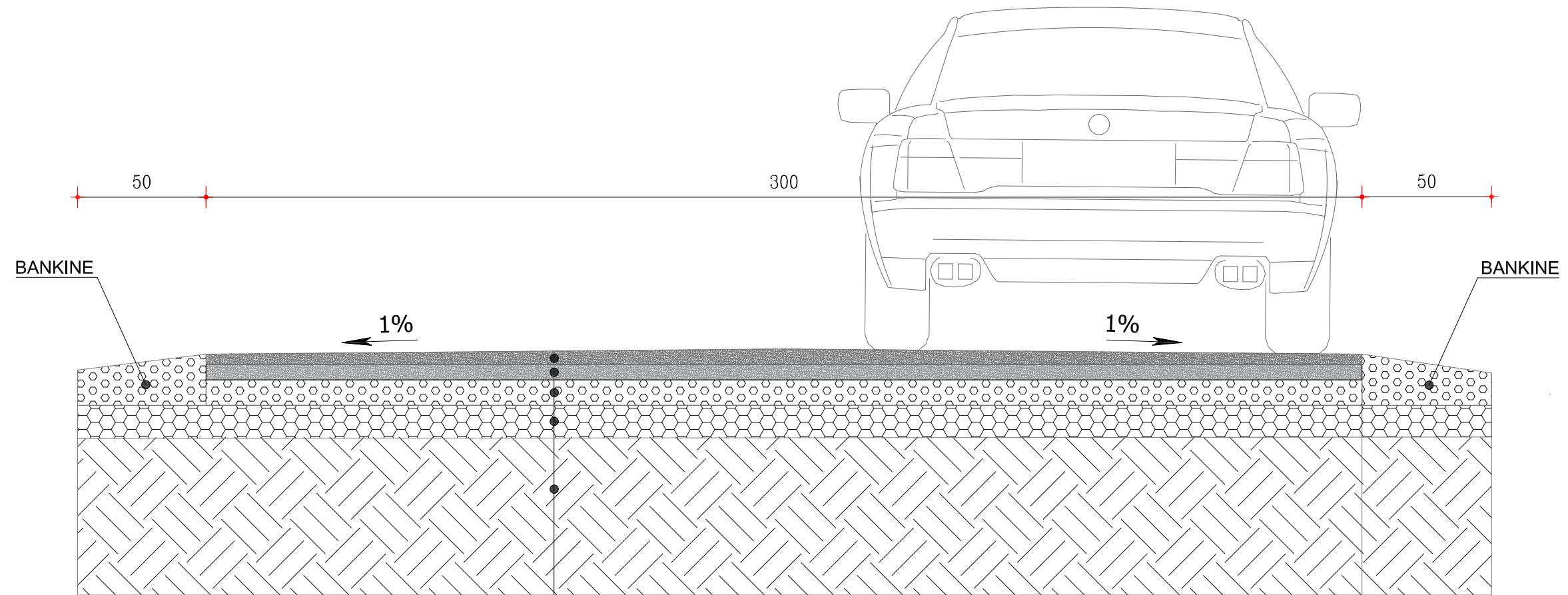
PLANIMETRI. AKSI 5 I RRUGES "KUSHI",
KATUND I RI PK-13 DERI PK-16 SHK 1 : 250




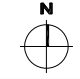
 BASHKIA DURRES NJESIA E PROJEKTIT DHE INFRASTRUKTURES	OBJEKTI: RIKONSTRUKSION I RRUGES "KUSHI", KATUND I RI	EMERTIMI I FLETES : PLANIMETRIA E RRUGES "KUSHI"	
	VENDODHJA : DURRES, KATUND I RI	EMER MBIEMER Ark. Bianka Madhi	FIRMA
PROJEKTI : ARKITEKTONIK	GRUPI PROJEKTIMIT : Ing. Eni Turkeshi Ing. Jetmir Kurti	No. I FLETES A07	
FAZA E PROJEKTIT : PROJEKT ZBATIMI			

PROFILI TERTHOR TIP RR. "KUSHI"

Km 0+000 - Km 0+356

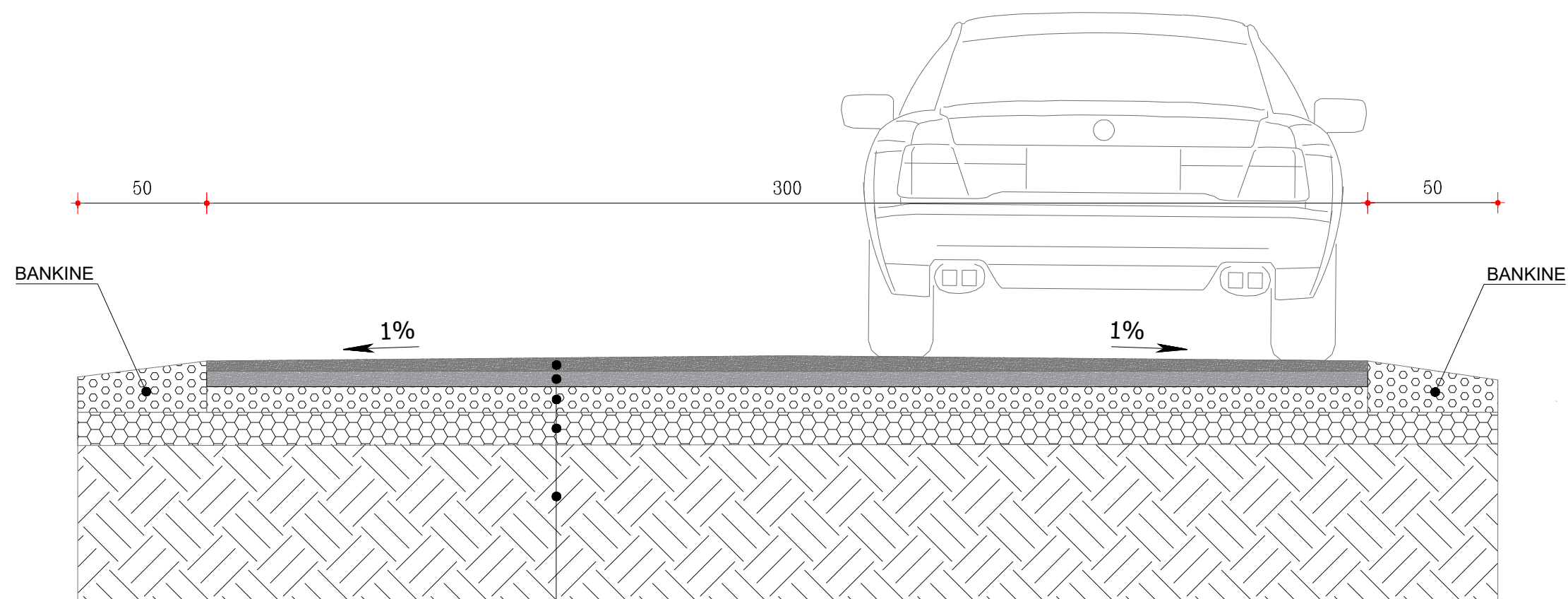


- ASFALTOBETON 4 CM
- BINDER 6 CM
- STABILIZANT 10 CM
- ÇAKULL MAKINERIE 10 CM
- TOKE NATYRALE E NGJESHUR


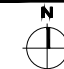
 BASHKIA DURRES NJESIA E PROJEKTIT DHE INFRASTRUKTURES	OBJEKTI:	RIKONSTRUKSION I RRUGES "KUSHI", KATUND I RI		
	VENDODHJA:	DURRES, KATUND I RI		
	PROJEKTI:	ARKITEKTONIK		
	FAZA E PROJEKTIT:	PROJEKT ZBATIMI		
GRUPI PROJEKTIMIT:	EMER MBIEMER	FIRMA	EMERTIMI I FLETES:	
	Ark. Bianka Madhi		PRERJE E RRUGES "KUSHI"	
	Ing. Eni Turkeshi		DATA: 12/2022	SHKALLA: 1:50
	Ing. Jetmir Kurti		No. I FLETES	A08
				

PROFILI TERTHOR TIP RR. "KUSHI"

Km 0+000 - Km 0+330



- ASFALTOBETON 4 CM
- BINDER 6 CM
- STABILIZANT 10 CM
- ÇAKULL MAKINERIE 15 CM
- TOKE NATYRALE E NGJESHUR

 BASHKIA DURRES NJESIA E PROJEKTIT DHE INFRASTRUKTURES	OBJEKTI: RIKONSTRUKSION I RRUGES "KUSHI", KATUND I RI		
	VENDODHJA : DURRES, KATUND I RI	EMER MBIEMER Ark. Bianka Madhi	FIRMA
	PROJEKTI : ARKITEKTONIK	GRUPI PROJEKTIMIT : Ark. ALba Kokomani	
	FAZA E PROJEKTIT : PROJEKT ZBATIMI	EMERTIMI I FLETES : PRERJE E RRUGES "KUSHI"	
	DATA: 03/2023	SHKALLA 1:50	N 
	No. I FLETES A07		