

**PROJEKT ZBATIMI PËRFUNDIMTARE: “NDËRTIMI I
INFRASTRUKTURËS PUBLIKE BREND ZONËS “TEDA”, TIRANË”**

Partner for Contact:
Order No.:
Company:
Customer No.:

Date: 30.01.2023
Operator: Ing. Arjan Shyti

Palma Konstruksion shpk
studiopalma@outlook.com
Blv. Bajram Curri. Pallatet Agimi H.5 AP.85
Tirana, Shqipëri

Operator Ing. Arjan Shyti
Telephone +355694056578
Fax
e-Mail arjanshyti@outlook.com

Table of contents

PROJEKT ZBATIMI PËRFUNDIMTARE: "NDËRTIMI I INFRASTRUKTURËS P...

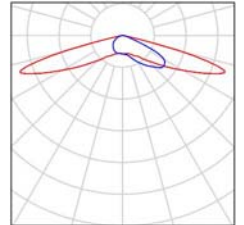
| | |
|--|----|
| Project Cover | 1 |
| Table of contents | 2 |
| Luminaire parts list | 3 |
| Sksion 1_(Shtylla 9m. Rruge 15m me dy trotuare_) | |
| Planning data | 4 |
| Photometric Results | 5 |
| False Color Rendering | 7 |
| Seksion 2_Copy of Shtylla 9m. Rruge 8m me dy trotuare | |
| Planning data | 8 |
| Photometric Results | 9 |
| False Color Rendering | 11 |

Palma Konstruksion shpk
studiopalma@outlook.com
Blv. Bajram Curri. Pallatet Agimi H.5 AP.85
Tirana, Shqipëri

Operator Ing. Arjan Shyti
Telephone +355694056578
Fax
e-Mail arjanshyti@outlook.com

**PROJEKT ZBATIMI PËRFUNDIMTARE: “NDËRTIMI I INFRASTRUKTURËS
PUBLIKE BRENDË ZONËS “TEDA”, TIRANË” / Luminaire parts list**

19 Pieces PHILIPS BGP282 T25 1 xLED180-4S/740 DW50
Article No.:
Luminous flux (Luminaire): 14400 lm
Luminous flux (Lamps): 18000 lm
Luminaire Wattage: 116.0 W
Luminaire classification according to CIE: 100
CIE flux code: 23 59 95 100 80
Fitting: 1 x LED180-4S/740 (Correction Factor
1.000).



Palma Konstruksion shpk
 studiopalma@outlook.com
 Blv. Bajram Curri. Pallatet Agimi H.5 AP.85
 Tirana, Shqipëri

Operator Ing. Arjan Shyti
 Telephone +355694056578
 Fax
 e-Mail arjanshyti@outlook.com

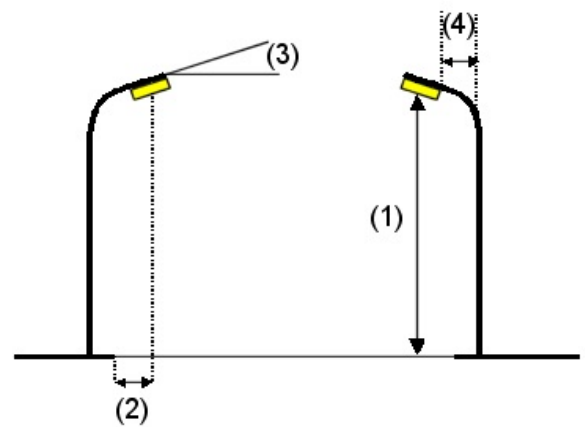
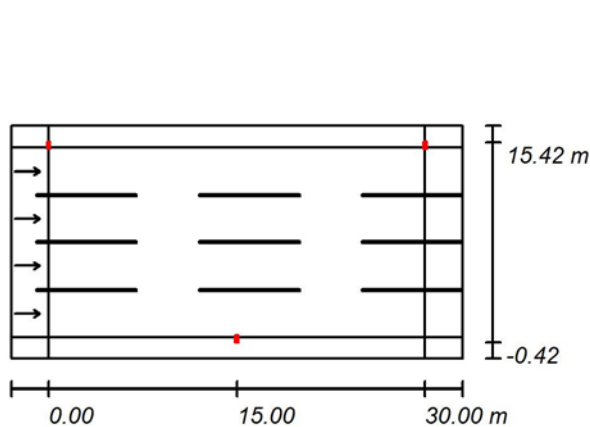
Sksion 1_(Shtylla 9m. Rruge 15m me dy trotuare_) / Planning data

Street Profile

Trotuar (Width: 1.700 m)
 Rruge 15m (Width: 15.000 m, Number of lanes: 4, tarmac: R3, q0: 0.070)
 Trotuar (Width: 1.700 m)

Light loss factor: 0.67

Luminaire Arrangements



Luminaire: PHILIPS BGP282 T25 1 xLED180-4S/740 DW50
 Luminous flux (Luminaire): 14400 lm
 Luminous flux (Lamps): 18000 lm
 Luminaire Wattage: 116.0 W
 Arrangement: Double row, with offset
 Pole Distance: 30.000 m
 Mounting Height (1): 9.007 m
 Height: 9.000 m
 Overhang (2): 0.000 m
 Boom Angle (3): 0.0 °
 Boom Length (4): -0.016 m

Maximum luminous intensities
 at 70°: 567 cd/klm
 at 80°: 36 cd/klm
 at 90°: 0.00 cd/klm

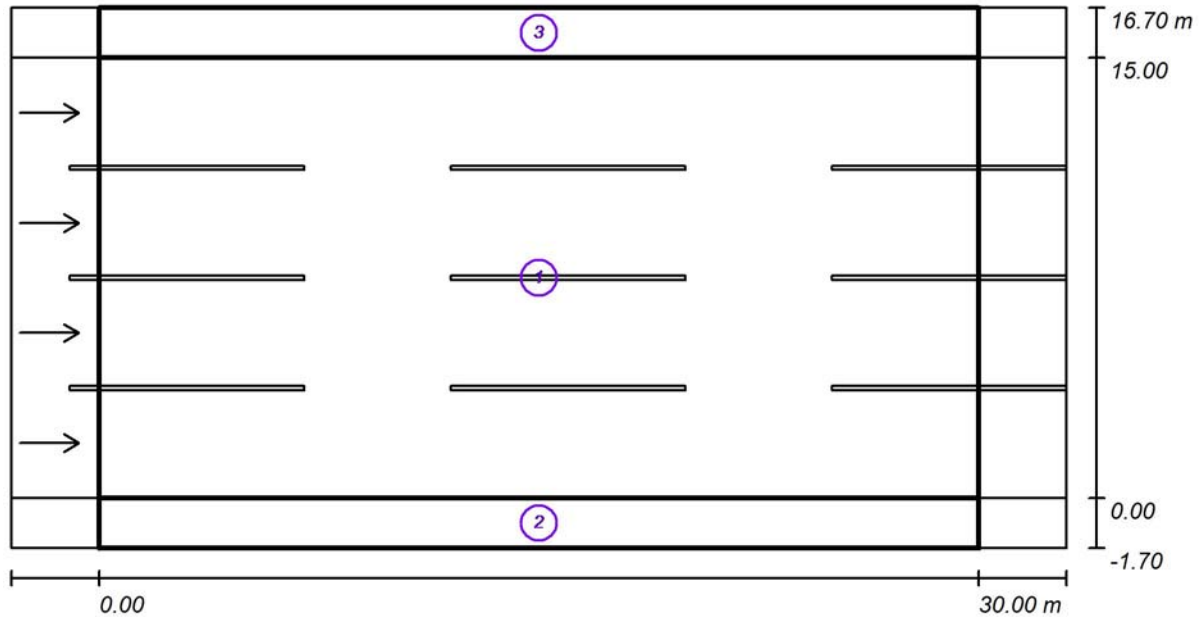
Any direction forming the specified angle from the downward vertical, with the luminaire installed for use.

No luminous intensities above 90°.
 Arrangement complies with luminous intensity class G3.
 Arrangement complies with glare index class D.5.

Palma Konstruksion shpk
 studiopalma@outlook.com
 Blv. Bajram Curri. Pallatet Agimi H.5 AP.85
 Tirana, Shqipëri

Operator Ing. Arjan Shyti
 Telephone +355694056578
 Fax
 e-Mail arjanshyti@outlook.com

Skision 1_(Shtylla 9m. Rruge 15m me dy trotuare_) / Photometric Results



Light loss factor: 0.67

Scale 1:258

Calculation Field List

- 1 Rruge 15m
 Length: 30.000 m, Width: 15.000 m
 Grid: 10 x 12 Points
 Accompanying Street Elements: Rruge 15m.
 tarmac: R3, q0: 0.070
 Selected Lighting Class: ME3c

(All lighting performance requirements are met.)

| | L_{av} [cd/m ²] | U0 | UI | TI [%] | SR |
|-------------------------------------|-------------------------------|--------|--------|--------|--------|
| Calculated values: | 1.86 | 0.65 | 0.73 | 11 | 0.68 |
| Required values according to class: | ≥ 1.00 | ≥ 0.40 | ≥ 0.50 | ≤ 15 | ≥ 0.50 |
| Fulfilled/Not fulfilled: | ✓ | ✓ | ✓ | ✓ | ✓ |

Palma Konstruksion shpk
 studiopalma@outlook.com
 Blv. Bajram Curri. Pallatet Agimi H.5 AP.85
 Tirana, Shqipëri

Operator Ing. Arjan Shyti
 Telephone +355694056578
 Fax
 e-Mail arjanshyti@outlook.com

Sksion 1_(Shtylla 9m. Rruge 15m me dy trotuare_) / Photometric Results

Calculation Field List

2 Trotuar

Length: 30.000 m, Width: 1.700 m
 Grid: 10 x 3 Points
 Accompanying Street Elements: Trotuar.
 Selected Lighting Class: S1

(All lighting performance requirements are met.)

| | E_{av} [lx] | E_{min} [lx] |
|-------------------------------------|---------------|----------------|
| Calculated values: | 19.54 | 18.06 |
| Required values according to class: | ≥ 15.00 | ≥ 5.00 |
| Fulfilled/Not fulfilled: | ✓ | ✓ |

3 Trotuar

Length: 30.000 m, Width: 1.700 m
 Grid: 10 x 3 Points
 Accompanying Street Elements: Trotuar.
 Selected Lighting Class: S1

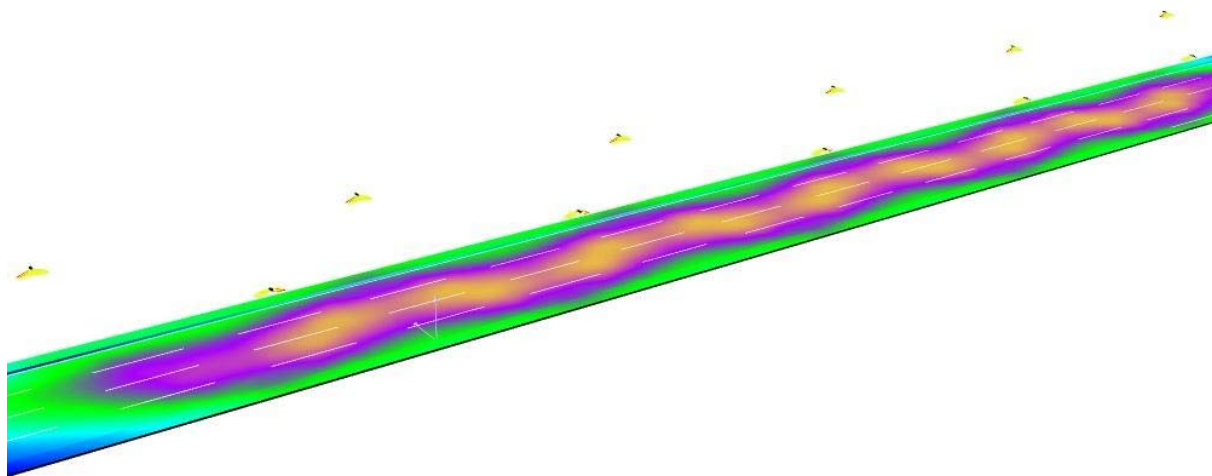
(All lighting performance requirements are met.)

| | E_{av} [lx] | E_{min} [lx] |
|-------------------------------------|---------------|----------------|
| Calculated values: | 19.54 | 18.06 |
| Required values according to class: | ≥ 15.00 | ≥ 5.00 |
| Fulfilled/Not fulfilled: | ✓ | ✓ |

Palma Konstruksion shpk
studiopalma@outlook.com
Blv. Bajram Curri. Pallatet Agimi H.5 AP.85
Tirana, Shqipëri

Operator Ing. Arjan Shyti
Telephone +355694056578
Fax
e-Mail arjanshyti@outlook.com

Sksion 1_(Shtylla 9m. Rruge 15m me dy trotuare_) / False Color Rendering



1 7.13 13.25 19.38 25.50 31.63 37.75 43.88 50

lx

Palma Konstruksion shpk
 studiopalma@outlook.com
 Blv. Bajram Curri. Pallatet Agimi H.5 AP.85
 Tirana, Shqipëri

Operator Ing. Arjan Shyti
 Telephone +355694056578
 Fax
 e-Mail arjanshyti@outlook.com

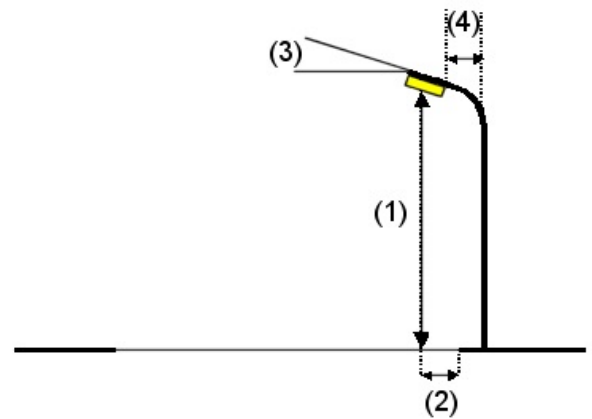
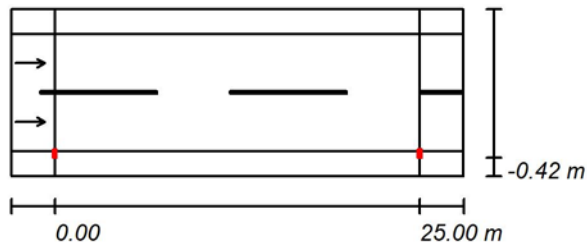
Seksion 2_Copy of Shtylla 9m. Rruge 8m me dy trotuare / Planning data

Street Profile

Trotuar (Width: 1.700 m)
 Rruge 8m (Width: 8.000 m, Number of lanes: 2, tarmac: R3, q0: 0.070)
 Trotuar (Width: 1.700 m)

Light loss factor: 0.67

Luminaire Arrangements



Luminaire: PHILIPS BGP282 T25 1 xLED180-4S/740 DW50
 Luminous flux (Luminaire): 14400 lm
 Luminous flux (Lamps): 18000 lm
 Luminaire Wattage: 116.0 W
 Arrangement: Single row, bottom
 Pole Distance: 25.000 m
 Mounting Height (1): 9.007 m
 Height: 9.000 m
 Overhang (2): 0.000 m
 Boom Angle (3): 0.0 °
 Boom Length (4): -0.016 m

Maximum luminous intensities
 at 70°: 567 cd/klm
 at 80°: 36 cd/klm
 at 90°: 0.00 cd/klm

Any direction forming the specified angle from the downward vertical, with the luminaire installed for use.

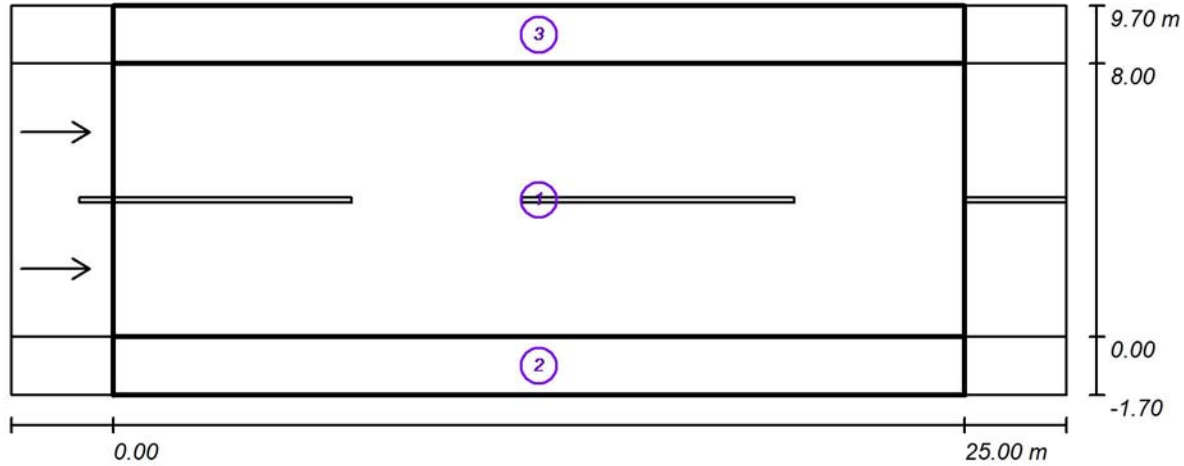
No luminous intensities above 90°.

Arrangement complies with luminous intensity class G3.
 Arrangement complies with glare index class D.5.

Palma Konstruksion shpk
 studiopalma@outlook.com
 Blv. Bajram Curri. Pallatet Agimi H.5 AP.85
 Tirana, Shqipëri

Operator Ing. Arjan Shyti
 Telephone +355694056578
 Fax
 e-Mail arjanshyti@outlook.com

Seksion 2_Copy of Shtylla 9m. Rruge 8m me dy trotuare / Photometric Results



Light loss factor: 0.67

Scale 1:222

Calculation Field List

- Rruge 8m
 Length: 25.000 m, Width: 8.000 m
 Grid: 10 x 6 Points
 Accompanying Street Elements: Rruge 8m.
 tarmac: R3, q0: 0.070
 Selected Lighting Class: ME3c

(All lighting performance requirements are met.)

| | L_{av} [cd/m ²] | U0 | UI | TI [%] | SR |
|-------------------------------------|-------------------------------|--------|--------|--------|--------|
| Calculated values: | 1.42 | 0.54 | 0.85 | 13 | 0.84 |
| Required values according to class: | ≥ 1.00 | ≥ 0.40 | ≥ 0.50 | ≤ 15 | ≥ 0.50 |
| Fulfilled/Not fulfilled: | ✓ | ✓ | ✓ | ✓ | ✓ |

Palma Konstruksion shpk
 studiopalma@outlook.com
 Blv. Bajram Curri. Pallatet Agimi H.5 AP.85
 Tirana, Shqipëri

Operator Ing. Arjan Shyti
 Telephone +355694056578
 Fax
 e-Mail arjanshyti@outlook.com

Seksion 2_Copy of Shtylla 9m. Rruge 8m me dy trotuare / Photometric Results

Calculation Field List

2 Trotuar

Length: 25.000 m, Width: 1.700 m
 Grid: 10 x 3 Points
 Accompanying Street Elements: Trotuar.
 Selected Lighting Class: S1

(All lighting performance requirements are met.)

| | E_{av} [lx] | E_{min} [lx] |
|-------------------------------------|---------------|----------------|
| Calculated values: | 16.84 | 15.80 |
| Required values according to class: | ≥ 15.00 | ≥ 5.00 |
| Fulfilled/Not fulfilled: | ✓ | ✓ |

3 Trotuar

Length: 25.000 m, Width: 1.700 m
 Grid: 10 x 3 Points
 Accompanying Street Elements: Trotuar.
 Selected Lighting Class: S1

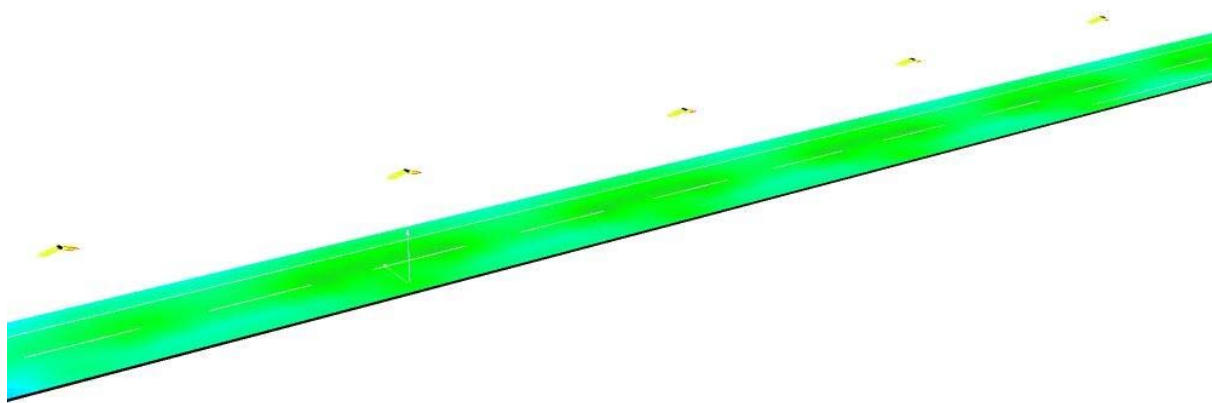
(All lighting performance requirements are met.)

| | E_{av} [lx] | E_{min} [lx] |
|-------------------------------------|---------------|----------------|
| Calculated values: | 16.18 | 14.59 |
| Required values according to class: | ≥ 15.00 | ≥ 5.00 |
| Fulfilled/Not fulfilled: | ✓ | ✓ |

Palma Konstruksion shpk
studiopalma@outlook.com
Blv. Bajram Curri. Pallatet Agimi H.5 AP.85
Tirana, Shqipëri

Operator Ing. Arjan Shyti
Telephone +355694056578
Fax
e-Mail arjanshyti@outlook.com

Seksion 2_Copy of Shtylla 9m. Rruge 8m me dy trotuare / False Color Rendering



1 7.13 13.25 19.38 25.50 31.63 37.75 43.88 50

lx