

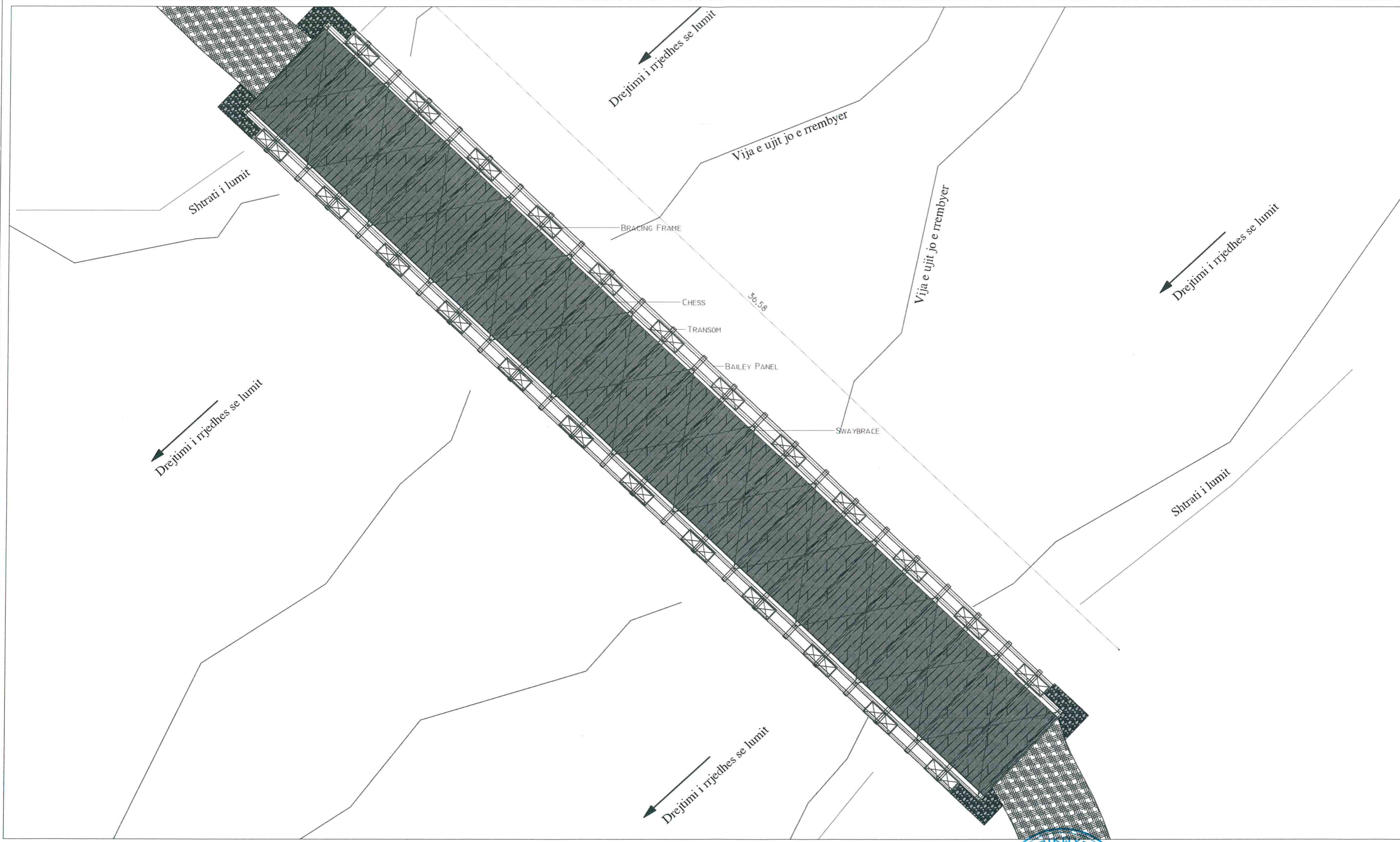
PROJEKTI KONSTRUKTIV

MIRATOI
ZV/KRYETARI I BASHKISË
GRANIT GJANA

OBJEKT: NDERTIMI I URES NË FSHATIN
GESHTEJE, KALIS

Bashkia Kukës	GRUPI I PROJEKTIMIT		
	Inxhinier	Ing. Xhem Neçi Lic. K1034/2	
Data		Shtator / 2023	Fleta Nr. A.00

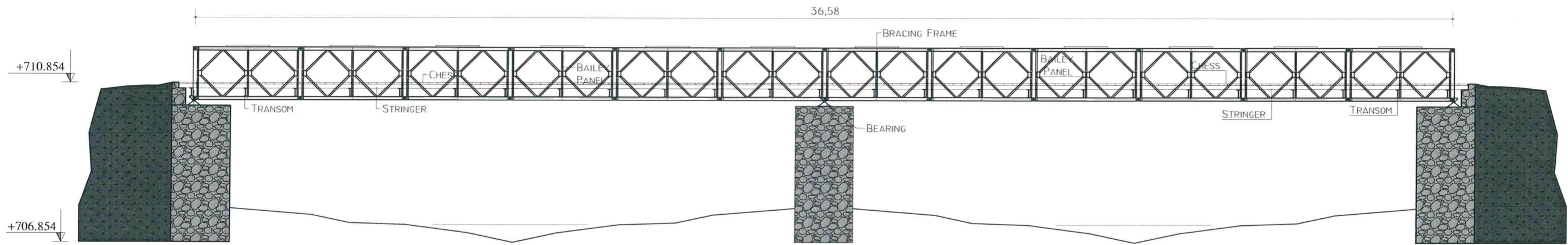
PLANIMETRI E URËS ME STRUKTURË METALIKE TIP "BAILEY" GESHTEJE



SHENIME	LEGJENDA	Bashkia	GRUPI I PROJEKTIMIT	
		Kukes	Inxhinier	Ing. Xhem Neçi Lic. K1034/2
		ZV/Kryetar		
		Granit Gjana		
				Shkalla 1:125
				Formati A3L Fleta Nr. A.01
				Data Shtator / 2023



URË ME STRUKTURË METALIKE TIP "BAILEY"(DOUBLE-SINGLE DS), GESHTEJE



SHENIME

LEGJENDA

Bashkia

Kukes

ZV/Kryetar

Granit Gjana

Inxhinier

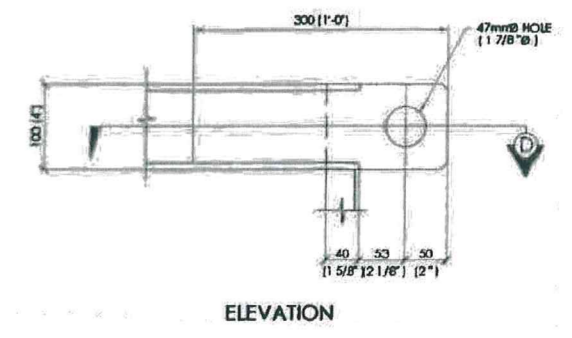
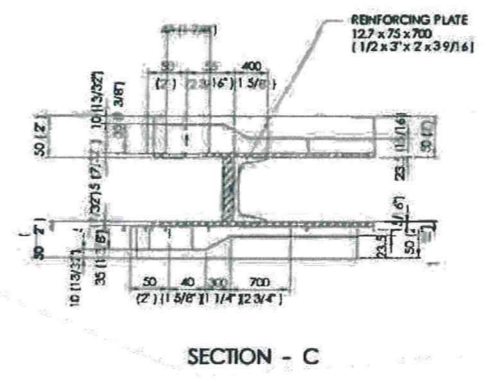
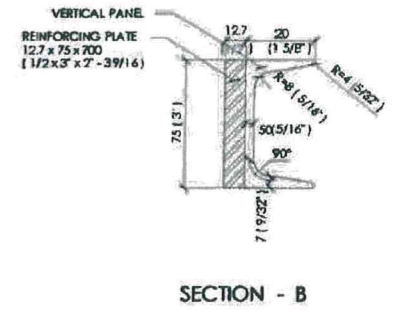
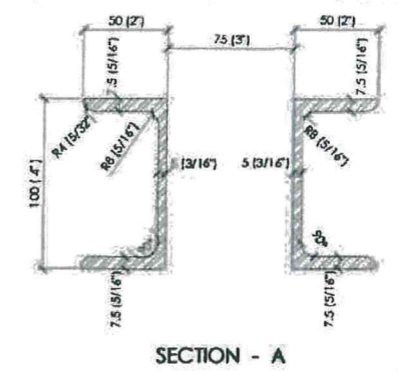
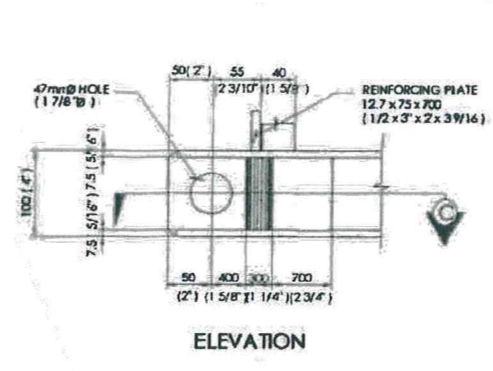
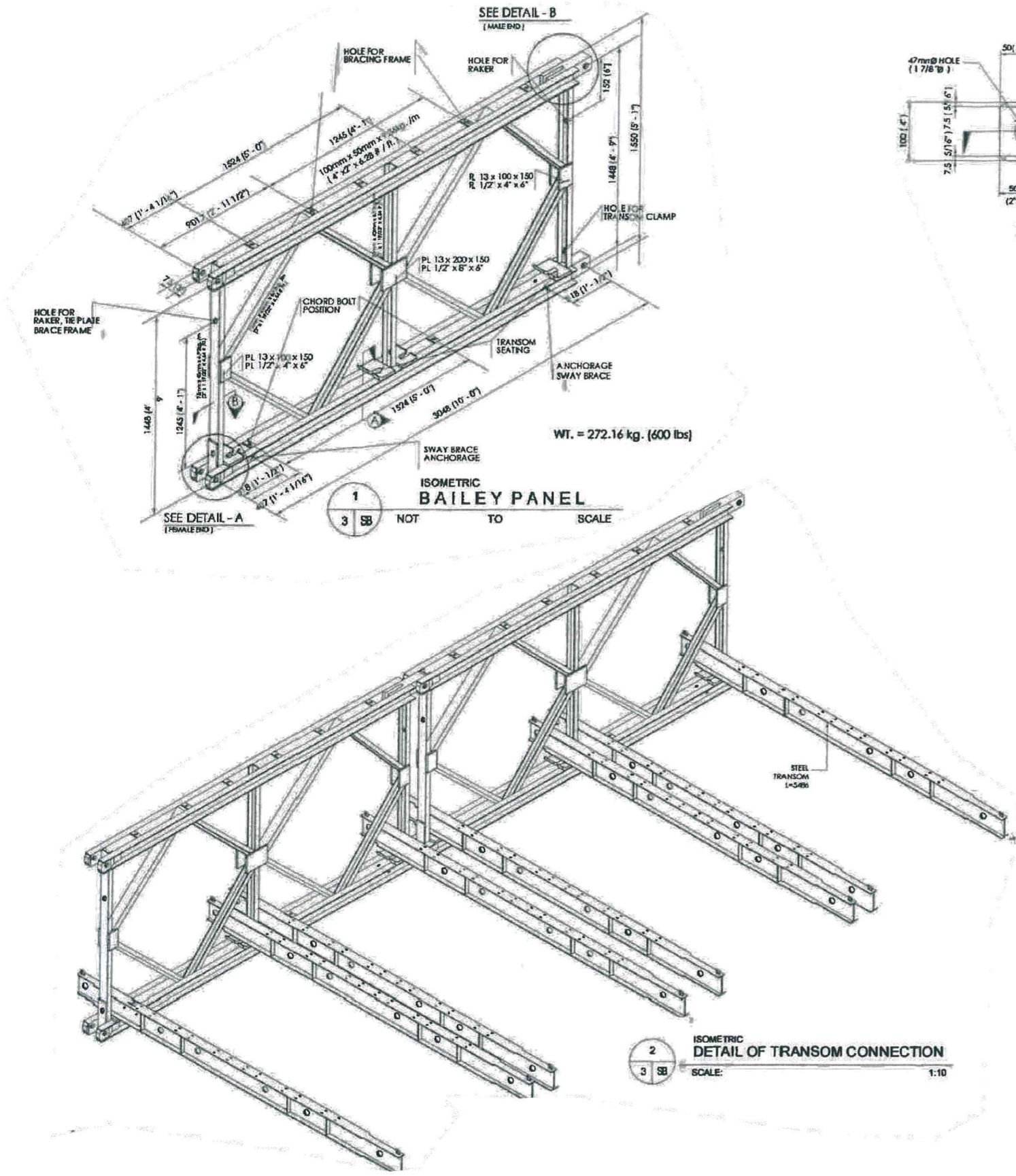
GRUPI I PROJEKTIMIT

Ing. Xhem Neçi Lic. K1034/2

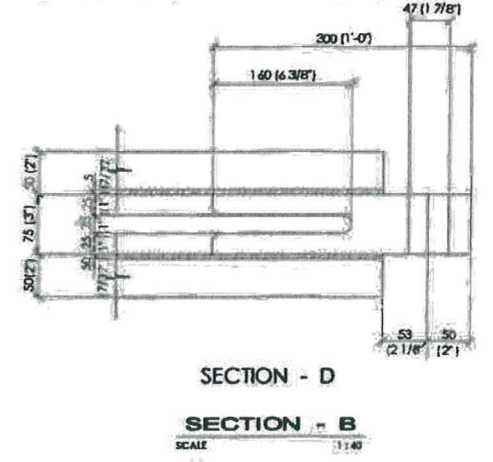
NR. 1001

Shkalla 1:125
 Formati A3L Fleta Nr. A.02
 Data Shtator / 2023

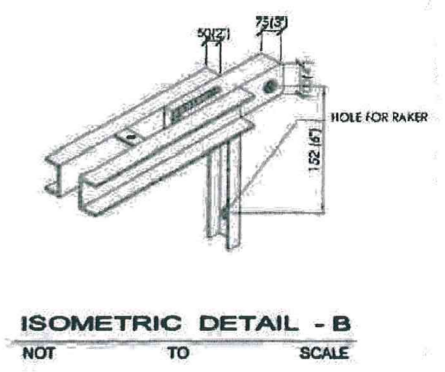
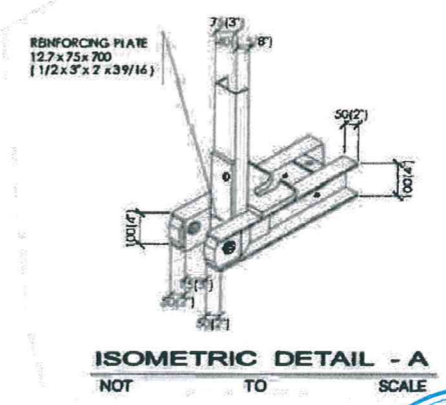
URË ME STRUKTURË METALIKE TIP "BAILEY" (DOUBLE-SINGLE DS), CERNALEVE



SECTION - A
SCALE: 1:40

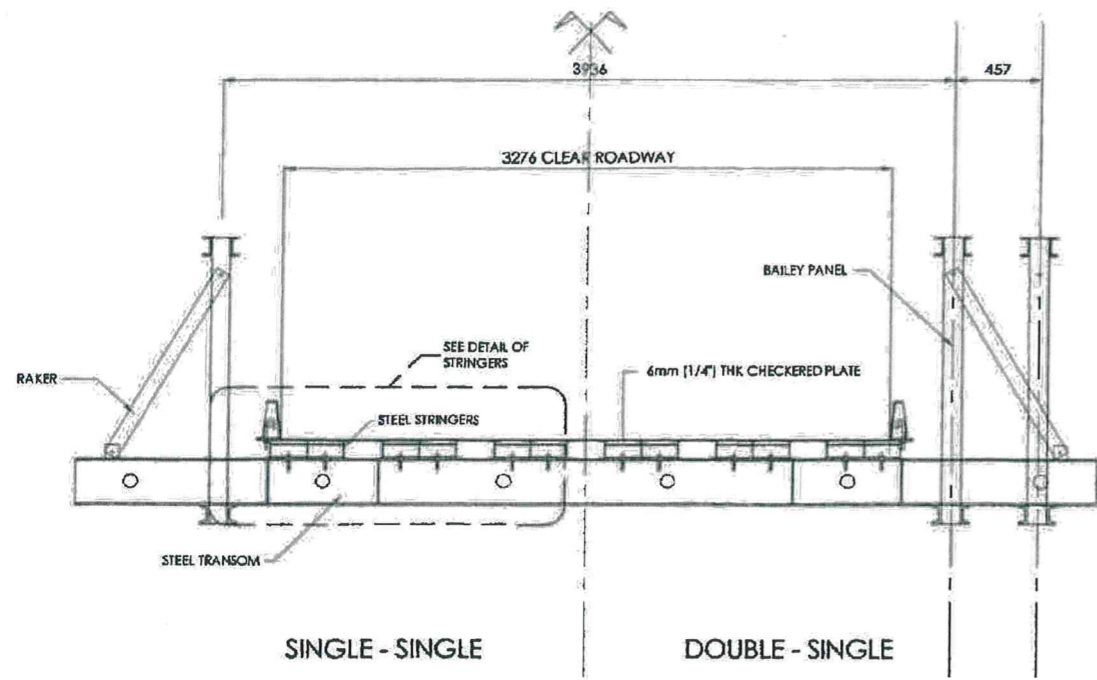


ISOMETRIC DETAIL OF TRANSOM CONNECTION
SCALE: 1:10

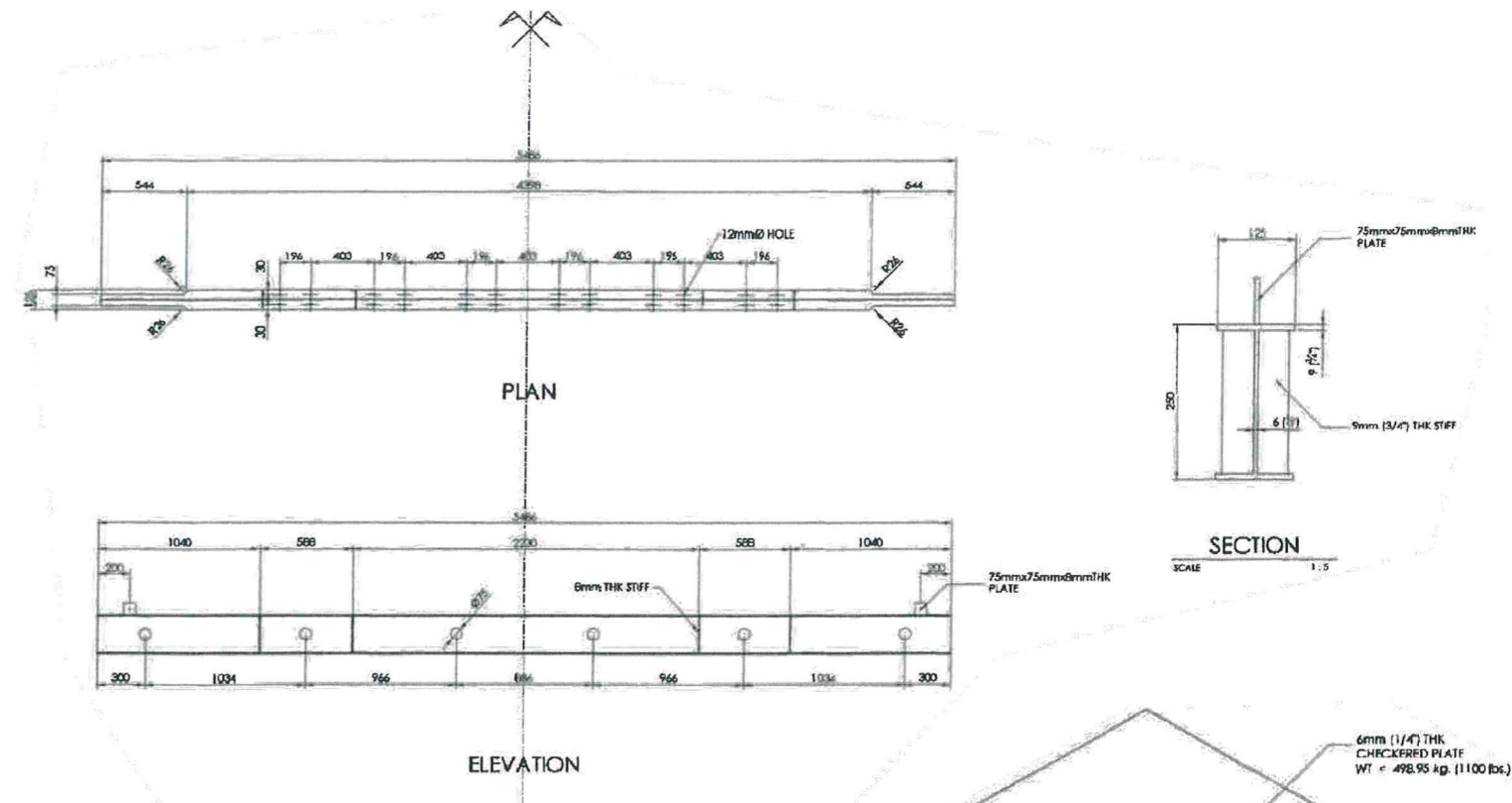


SHENIME	LEGJENDA				
		Bashkia	GRUPI I PROJEKTIMIT Ing. Xhem Neçi Lic. K1034/2		
		Kukes		Inxhinier	----
		ZV/Kryetar			
		Granit Gjana			
				Shkalla 1:125 Formati A3L Fleta Nr. A.03 Data Shtator / 2023	

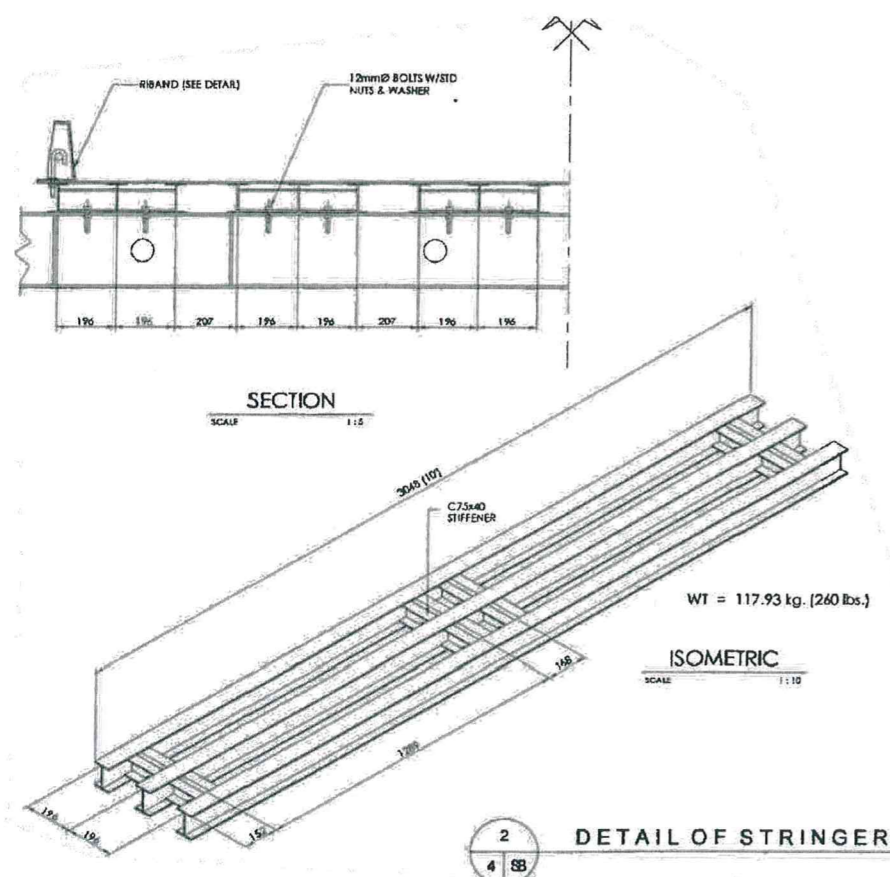
DETAJE



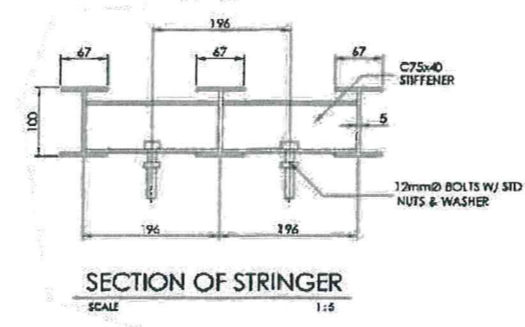
1 TYPICAL ROADWAY CROSS SECTION
SCALE: 1:20



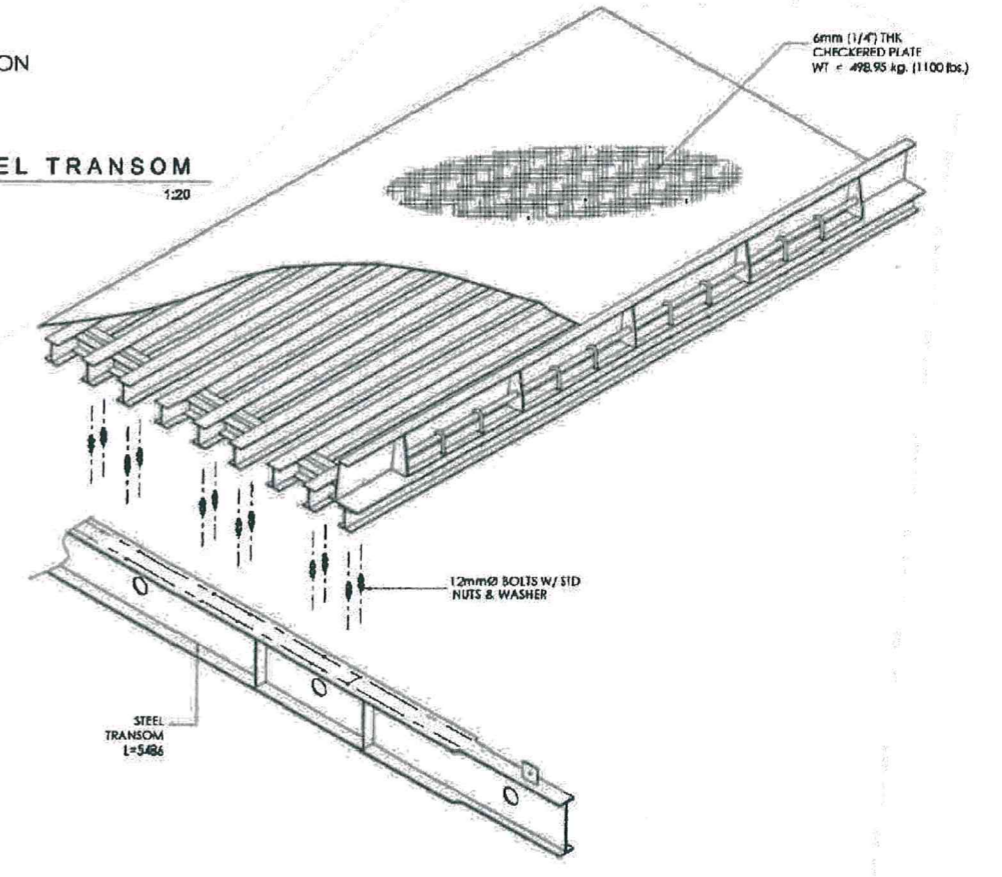
3 DETAIL OF STEEL TRANSOM
SCALE: 1:20



2 DETAIL OF STRINGERS
SCALE: 1:10



SECTION OF STRINGER
SCALE: 1:5



4 DETAIL CONNECTION OF STRINGER & TRANSOM
SCALE: NOT TO

SHENIME

LEGJENDA

Bashkia
Kukes
ZV/Kryetar
Granit Gjano

Inxhinier



Shkalla 1:125
Formati A3L Fleta Nr. A.04
Data Shtator / 2023

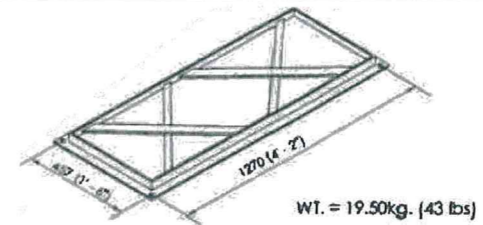
DETAJE

REQUIRED PANEL TYPE BASED ON SPAN LENGTH								
SPAN LENGTH (M)	9.144	12.192	15.240	18.288	21.336	24.384	27.432	30.480
M 13.5	SS	SS	SS	SS	DS	DS	DS	TS
Ms 13.5	SS	SS	SS	DS	DS	TS	TS	TS
M 18	SS	SS	SS	DS	DS	TS	TS	DD
MS 18	SS	SS	DS	DS	TS	TS	DD	DD

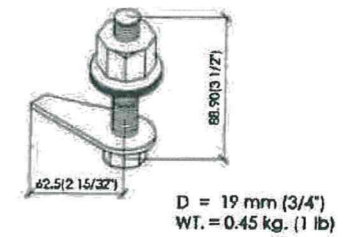
NOTE :
 SS-SINGLE-SINGLE
 DS-DOUBLE-SINGLE
 TS-TRIPLE-SINGLE
 DD-DOUBLE-DOUBLE

SUPERSTRUCTURE QUANTITIES BASED ON SPAN LENGTH (Kg)											
SPAN LENGTH (M)		3.048	6.096	9.144	12.192	15.240	18.288	21.336	24.384	27.432	30.480
403(4)A2	STRUCTURAL STEEL, FURNISHED AND FABRICATED (GRADE 50)	3,513	6,422	9,331	12,241	18,603	22,135	30,221	34,337	43,249	47,950

	SASIA PER CDO SET (PER CDO 3.048ML)											
	NR	SINGLE-SINGLE					DOUBLE-SINGLE					
		DIMENSIONET(M)			SASIA(Kg)		DIMENSIONET(M)			SASIA(Kg)		
		LARTESIA	GJERESIA	GJATESIA	PER COPE	TOTAL	LARTESIA	GJERESIA	GJATESIA	PER COPE	TOTAL	
BAILEY PANEL	2	1.55	0.178	3.048	272.16	544.32	4	1.55	0.178	3.048	272.16	1088.64
PANEL PIN	4		∅ 0.0476	0.203	2.720	10.88	8		∅ 0.0476	0.203	2.720	21.76
TRANSOM	4	3.048	0.127	5.486	208.65	834.60	4	3.048	0.127	5.486	208.65	834.60
TRANSOM CLAMP	8		0.203	0.343	3.18	25.44	16		0.203	0.343	3.180	50.88
STRINGERS (PLAIN) - 3 PC SET	6	0.102	0.064	3.048	117.93	707.58	6	0.102	0.064	3.048	117.93	707.58
BOLT (STRINGER)	96		∅ 0.0127	0.089	0.23	22.08	96		∅ 0.0127	0.089	0.23	22.08
SWAY BRACING	2		∅ 0.0254		28.58	57.16	2		∅ 0.0254		28.58	57.16
STEEL CHECKERED PLATE	1	0.006	3.531	3.048	498.95	498.95	1	0.006	3.531	3.048	498.95	498.95
BRACING FRAME							2	1.270	0.457		19.50	39.00
BOLT (BRACING)							8		∅ 0.01905	0.089	0.45	3.60
BOLT (CHORD)												
RAKER	4	0.076	0.038	1.067	11.79	47.16	4	0.076	0.038	1.067	11.79	47.16
BOLT (RAKER)	8		∅ 0.019	0.089	0.45	3.60	8		∅ 0.01905	0.089	0.45	3.60
RIBAND (CURB)	2	0.203	0.127	3.048	78.93	157.86	2	0.203	0.127	3.048	78.93	157.86
TIE PLATE												
1.PESHA TOALE (Kg)					2909.63			3532.87				
HAPSIRA FUNDORE												
SASIA												
BEARING PLATE	4	0.076	0.445	0.533	66.68	266.72	4	0.076	0.445	0.533	66.68	266.72
BEARING	4	0.016	0.381	0.457	28.58	114.32	8	0.016	0.381	0.457	28.58	228.64
END POST (MALE)	2	1.448			54.43	108.86	4	1.448			54.43	217.72
END POST (FEMALE)	2	1.448			56.70	113.40	4	1.448			56.70	226.80
BRACING FRAME FOR END SPANS												
BOLT (BRACING) FOR END SPANS												
2.PESHA TOALE (Kg)					603.30			939.88				
PESHA TOALE (1+2) (Kg)					3512.93			4472.75				



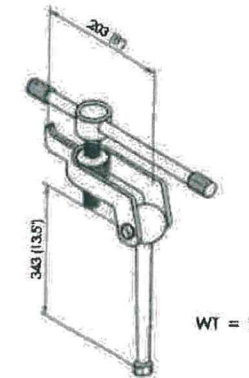
1 ISOMETRIC BRACING FRAME
 2 SB NOT TO SCALE



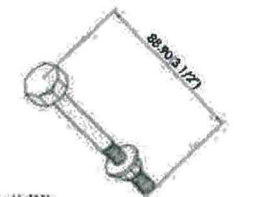
2 ISOMETRIC BRACING/RAKER BOLT
 2 SB NOT TO SCALE



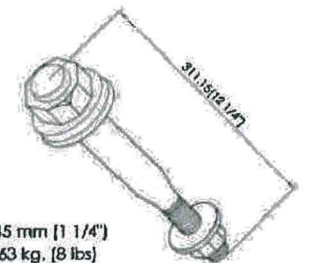
3 ISOMETRIC PANEL PIN
 2 SB NOT TO SCALE



4 ISOMETRIC TRANSOM CLAMP
 2 SB NOT TO SCALE



5 ISOMETRIC STRINGER BOLT
 2 SB NOT TO SCALE



6 ISOMETRIC CHORD BOLT
 2 SB NOT TO SCALE

SHENIME	LEGJENDA	Bashkia	GRUPI I PROJEKTIMIT	
		Kukes	Inzhinier	Ing. Xhem Neçi Lic. K1034/2
		ZV/Kryetar		MK. 1186/1
		Granit Gjana		
		Shkalla	----	
		Formati	A3L Fleta Nr. A.07	
		Data	Shtator / 2023	