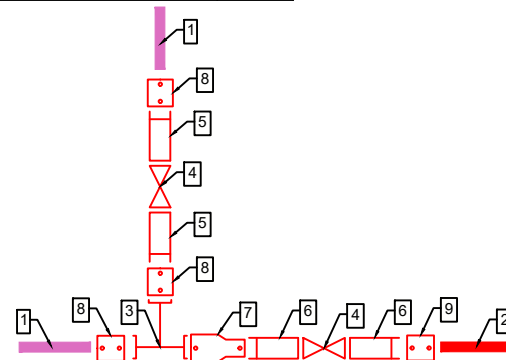


## 6. Detajet e Nyjeve



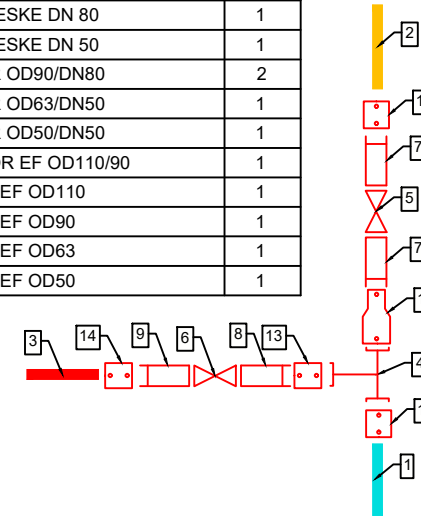
N1 - Nyja do te instalohet ne pusete 150x150 (Tip 2)

| NYJA 1 |         |                              |       |
|--------|---------|------------------------------|-------|
| NR     | SIMBOLI | PERSHKRIMI                   | SASIA |
| 1      | OD63mm  | Tub HDPE 100, OD= 63mm, PN10 | -     |
| 2      | OD50mm  | Tub HDPE 100, OD= 50mm, PN10 | -     |
| 3      |         | TEE HDPE OD63/63/63          | 1     |
| 4      |         | SARACINESKE DN 50            | 2     |
| 5      |         | ADAPTOR OD63/DN50            | 2     |
| 6      |         | ADAPTOR OD50/DN50            | 2     |
| 7      |         | REDUKTOR EF OD63/50          | 1     |
| 8      |         | MANIKOT EF OD63              | 3     |
| 9      |         | MANIKOT EF OD50              | 1     |



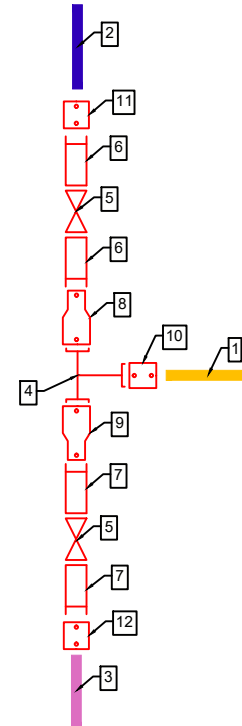
N2 - Nyja do te instalohet ne pusete 150x150 (Tip 2)

| NYJA 2 |         |                               |       |
|--------|---------|-------------------------------|-------|
| NR     | SIMBOLI | PERSHKRIMI                    | SASIA |
| 1      | OD110mm | Tub HDPE 100, OD= 110mm, PN10 | -     |
| 2      | OD90mm  | Tub HDPE 100, OD= 90mm, PN10  | -     |
| 3      | OD50mm  | Tub HDPE 100, OD= 50mm, PN10  | -     |
| 4      |         | TEE HDPE OD110/110/63         | 1     |
| 5      |         | SARACINESKE DN 80             | 1     |
| 6      |         | SARACINESKE DN 50             | 1     |
| 7      |         | ADAPTOR OD90/DN80             | 2     |
| 8      |         | ADAPTOR OD63/DN50             | 1     |
| 9      |         | ADAPTOR OD50/DN50             | 1     |
| 10     |         | REDUKTOR EF OD110/90          | 1     |
| 11     |         | MANIKOT EF OD110              | 1     |
| 12     |         | MANIKOT EF OD90               | 1     |
| 13     |         | MANIKOT EF OD63               | 1     |
| 14     |         | MANIKOT EF OD50               | 1     |



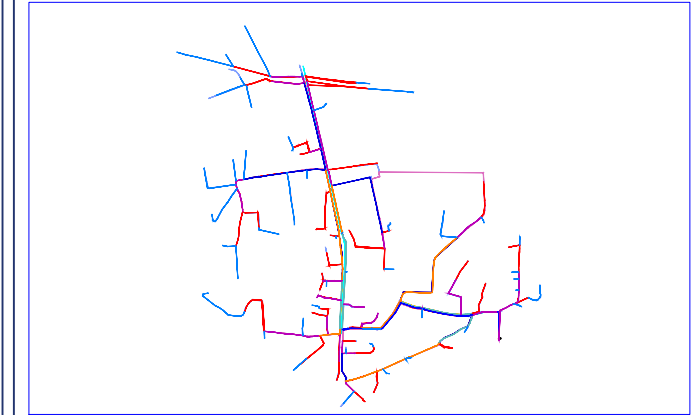
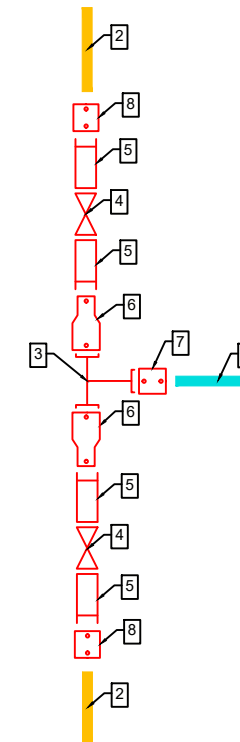
N3 - Nyja do te instalohet ne pusete 150x150 (Tip 2)

| NYJA 3 |         |                              |       |
|--------|---------|------------------------------|-------|
| NR     | SIMBOLI | PERSHKRIMI                   | SASIA |
| 1      | OD90mm  | Tub HDPE 100, OD= 90mm, PN10 | -     |
| 2      | OD75mm  | Tub HDPE 100, OD= 75mm, PN10 | -     |
| 3      | OD63mm  | Tub HDPE 100, OD= 63mm, PN10 | -     |
| 4      |         | TEE HDPE OD90/90/90          | 1     |
| 5      |         | SARACINESKE DN 50            | 2     |
| 6      |         | ADAPTOR OD75/DN50            | 2     |
| 7      |         | ADAPTOR OD63/DN50            | 2     |
| 8      |         | REDUKTOR EF OD90/75          | 1     |
| 9      |         | REDUKTOR EF OD90/63          | 1     |
| 10     |         | MANIKOT EF OD90              | 1     |
| 11     |         | MANIKOT EF OD75              | 1     |
| 12     |         | MANIKOT EF OD63              | 1     |



N4 - Nyja do te instalohet ne pusete 150x150 (Tip 2)

| NYJA 4 |         |                               |       |
|--------|---------|-------------------------------|-------|
| NR     | SIMBOLI | PERSHKRIMI                    | SASIA |
| 1      | OD110mm | Tub HDPE 100, OD= 110mm, PN10 | -     |
| 2      | OD90mm  | Tub HDPE 100, OD= 90mm, PN10  | -     |
| 3      |         | TEE HDPE OD110/110/110        | 1     |
| 4      |         | SARACINESKE DN 80             | 2     |
| 5      |         | ADAPTOR OD90/DN80             | 4     |
| 6      |         | REDUKTOR EF OD110/90          | 2     |
| 7      |         | MANIKOT EF OD110              | 1     |
| 8      |         | MANIKOT EF OD90               | 2     |



**LEGJENDA:**

| SIMBOLI | PERSHKRIMI                    |
|---------|-------------------------------|
| OD110mm | Tub HDPE 100, OD= 110mm, PN10 |
| OD90mm  | Tub HDPE 100, OD= 90mm, PN10  |
| OD75mm  | Tub HDPE 100, OD= 75mm, PN10  |
| OD63mm  | Tub HDPE 100, OD= 63mm, PN10  |
| OD50mm  | Tub HDPE 100, OD= 50mm, PN10  |
| OD40mm  | Tub HDPE 100, OD= 40mm, PN10  |
|         | TEE HDPE                      |
|         | SARACINESKE                   |
|         | ADAPTOR                       |
|         | REDUKTOR EF                   |
|         | MANIKOT EF                    |

**SHENIME TEKNIKE:**

- Rakorderit montuese per tubat e rrjetit shperndares do te jene me elektrofuzion.

Titulli i Projektit:

“Ndërtimi i rrjetit të ujësjellësit zona Industriale (ish rezervat e shtetit-Ura e Hanit)”, linjës së dërgimit, Bashkia Berat”

Vendndodhja: BERAT, BASHKIA BERAT

Autoriteti Kontraktor:

Ujësjellës Kanalizime Berat-Kuçovë sh.a  
BASHKIA BERAT



PROJEKTUES:

KKG Project sh.p.k  
NR.LICENCE: N.6994/6



LEAD Consulting sh.p.k  
NR.LICENCE: N.6903/3



IDEAL Design & Services sh.p.k  
NR.LICENCE: N.7046/1



Grupi i Projektimit:

|                                 |                |                    |
|---------------------------------|----------------|--------------------|
| Inxhinier Ndertimi              | Ardit KANE     | Licenca: K.1420/2  |
| Inxhinier Hidroteknik           | Marjola PEPAJ  | Licenca: K.1663/3  |
| Inxhinier Ndertimi/Konstruktore | Elidon BASHA   | Licenca: K.1642/1  |
| Inxhinier Ndertimi/Transport    | Ilir HODAJ     | Licenca: K.1729/2  |
| Inxhinier Gjeodet               | Luljeta NGRESI | Licenca: T.1001/2  |
| Inxhinier Gjeodet               | Erjon LUFO     | Licenca: T.1343/1  |
| Inxhinier Gjeolog               | Vlashi NAKUÇI  | Licenca: Gj.0054/3 |
| Arkitekt                        | Henri ALEKSI   | Licenca: A.3741/1  |

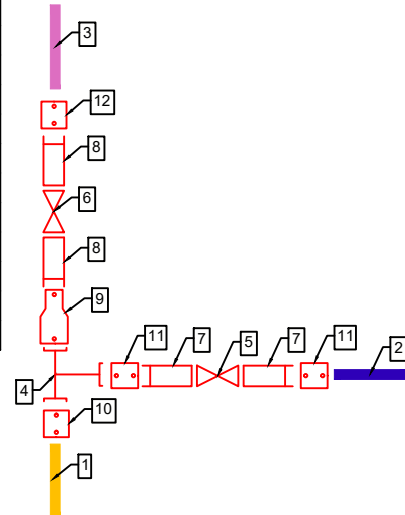
EMERTIMI I VIZATIMIT:

**DETAJET E NYJEVE**

REALIZUAR: 2022 SHKALLA N/A NR. FLETES: DN\_01

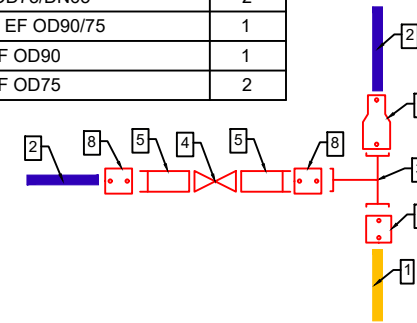
N5 - Nyja do te instalohet ne pusete 150x150 (Tip 2)

| NYJA 5 |         |                              |       |
|--------|---------|------------------------------|-------|
| NR     | SIMBOLI | PERSHKRIMI                   | SASIA |
| 1      | OD90mm  | Tub HDPE 100, OD= 90mm, PN10 | -     |
| 2      | OD75mm  | Tub HDPE 100, OD= 75mm, PN10 | -     |
| 3      | OD63mm  | Tub HDPE 100, OD= 63mm, PN10 | -     |
| 4      |         | TEE HDPE OD90/90/75          | 1     |
| 5      |         | SARACINESKE DN 65            | 1     |
| 6      |         | SARACINESKE DN 50            | 1     |
| 7      |         | ADAPTOR OD75/DN65            | 2     |
| 8      |         | ADAPTOR OD63/DN50            | 2     |
| 9      |         | REDUKTOR EF OD90/63          | 1     |
| 10     |         | MANIKOT EF OD90              | 1     |
| 11     |         | MANIKOT EF OD75              | 2     |
| 12     |         | MANIKOT EF OD63              | 1     |



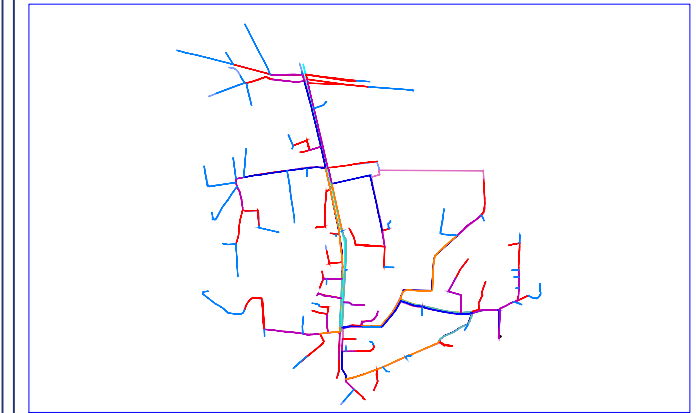
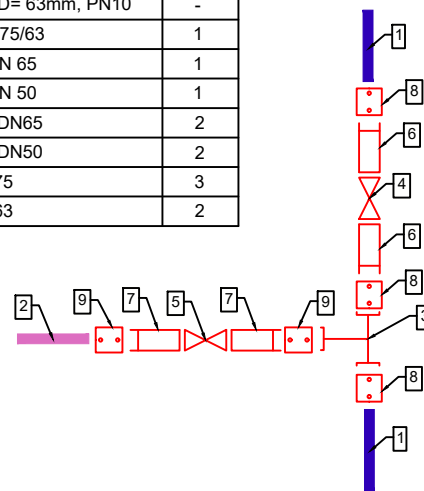
N6 - Nyja do te instalohet ne pusete 100x100 (Tip 1)

| NYJA 6 |         |                              |       |
|--------|---------|------------------------------|-------|
| NR     | SIMBOLI | PERSHKRIMI                   | SASIA |
| 1      | OD90mm  | Tub HDPE 100, OD= 90mm, PN10 | -     |
| 2      | OD75mm  | Tub HDPE 100, OD= 75mm, PN10 | -     |
| 3      |         | TEE HDPE OD90/90/75          | 1     |
| 4      |         | SARACINESKE DN 65            | 1     |
| 5      |         | ADAPTOR OD75/DN65            | 2     |
| 6      |         | REDUKTOR EF OD90/75          | 1     |
| 7      |         | MANIKOT EF OD90              | 1     |
| 8      |         | MANIKOT EF OD75              | 2     |



N7 - Nyja do te instalohet ne pusete 150x150 (Tip 2)

| NYJA 7 |         |                              |       |
|--------|---------|------------------------------|-------|
| NR     | SIMBOLI | PERSHKRIMI                   | SASIA |
| 1      | OD75mm  | Tub HDPE 100, OD= 75mm, PN10 | -     |
| 2      | OD63mm  | Tub HDPE 100, OD= 63mm, PN10 | -     |
| 3      |         | TEE HDPE OD75/75/63          | 1     |
| 4      |         | SARACINESKE DN 65            | 1     |
| 5      |         | SARACINESKE DN 50            | 1     |
| 6      |         | ADAPTOR OD75/DN65            | 2     |
| 7      |         | ADAPTOR OD63/DN50            | 2     |
| 8      |         | MANIKOT EF OD75              | 3     |
| 9      |         | MANIKOT EF OD63              | 2     |



**LEGJENDA:**

| SIMBOLI | PERSHKRIMI                    |
|---------|-------------------------------|
| OD110mm | Tub HDPE 100, OD= 110mm, PN10 |
| OD90mm  | Tub HDPE 100, OD= 90mm, PN10  |
| OD75mm  | Tub HDPE 100, OD= 75mm, PN10  |
| OD63mm  | Tub HDPE 100, OD= 63mm, PN10  |
| OD50mm  | Tub HDPE 100, OD= 50mm, PN10  |
| OD40mm  | Tub HDPE 100, OD= 40mm, PN10  |
|         | TEE HDPE                      |
|         | SARACINESKE                   |
|         | ADAPTOR                       |
|         | REDUKTOR EF                   |
|         | MANIKOT EF                    |

**SHENIME TEKNIKE:**

- Rakorderit montuese per tubat e rrjetit shperndares do te jene me elektrofuzion.

Titulli i Projektit:

"Ndërtimi i rrjetit të ujësjellësit zona Industriale (ish rezervat e shtetit-Ura e Hanit)", linjës së dërgimit, Bashkia Berat"

Vendndodhja: BERAT, BASHKIA BERAT

Autoriteti Kontraktor:

Ujësllës Kanalizime Berat-Kuçovë sh.a  
BASHKIA BERAT



PROJEKTUES:

KKG Project sh.p.k  
NR.LICENCE: N.6994/6



LEAD Consulting sh.p.k  
NR.LICENCE: N.6903/3



IDEAL Design & Services sh.p.k  
NR.LICENCE: N.7046/1



Grupi i Projektimit:

|                                 |                |                    |
|---------------------------------|----------------|--------------------|
| Inxhinier Ndertimi              | Ardit KANE     | Licenca: K.1420/2  |
| Inxhinier Hidroteknik           | Marjola PEPAJ  | Licenca: K.1663/3  |
| Inxhinier Ndertimi/Konstruktore | Elidon BASHA   | Licenca: K.1642/1  |
| Inxhinier Ndertimi/Transport    | Ilir HODAJ     | Licenca: K.1729/2  |
| Inxhinier Gjeodet               | Luljeta NGRESI | Licenca: T.1001/2  |
| Inxhinier Gjeodet               | Erjon LUFO     | Licenca: T.1343/1  |
| Inxhinier Gjeolog               | Vlashi NAKUÇI  | Licenca: Gj.0054/3 |
| Arkitekt                        | Henri ALEKSI   | Licenca: A.3741/1  |

EMERTIMI I VIZATIMIT:

**DETAJET E NYJEVE**

REALIZUAR: 2022 SHKALLA N/A NR. FLETES: DN\_02