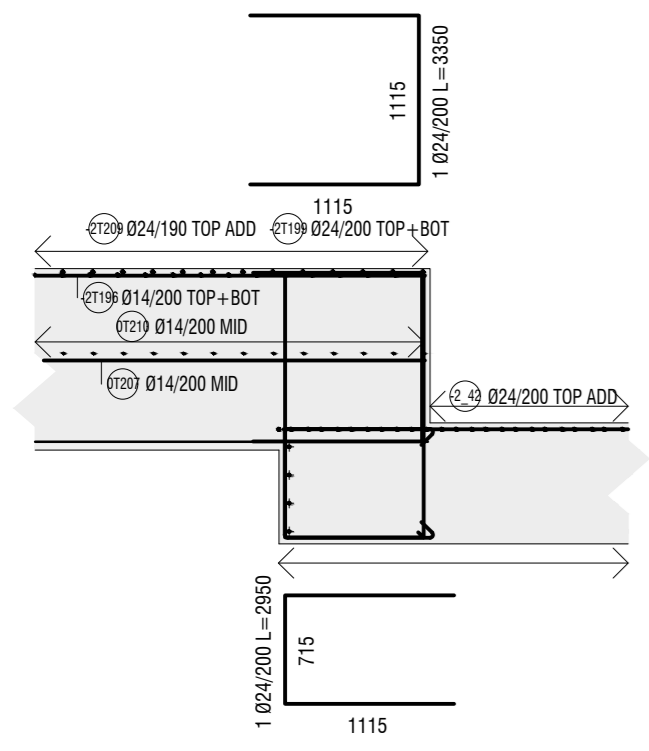
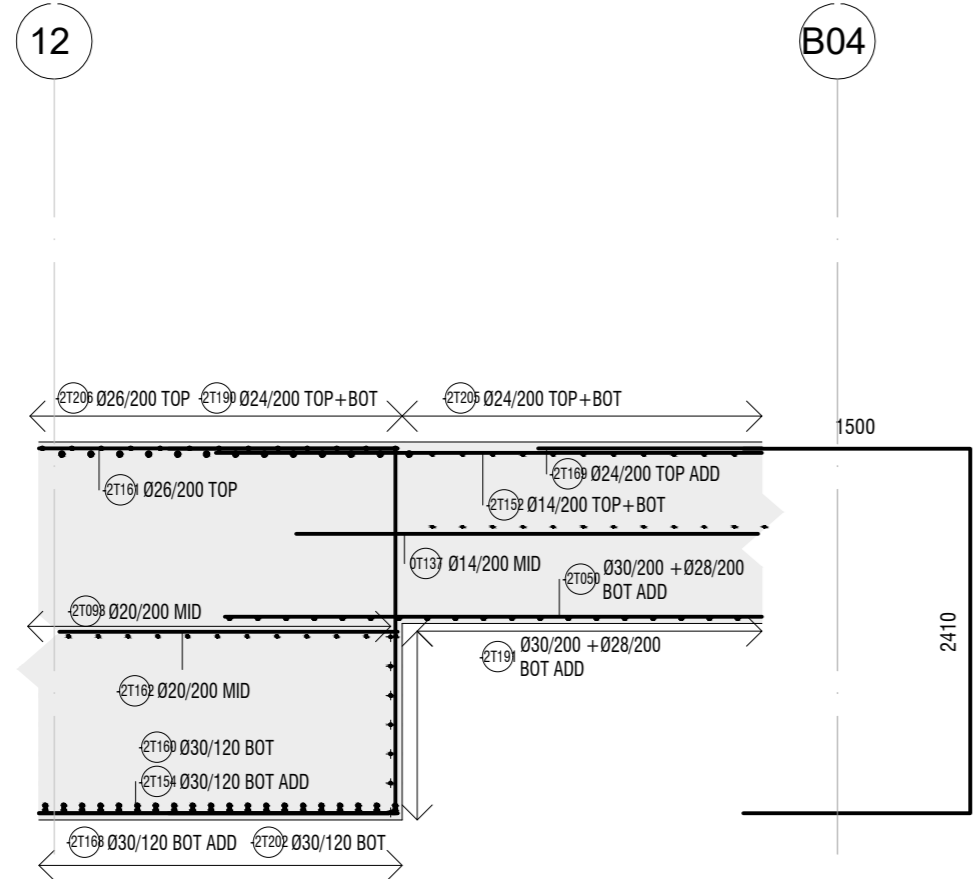


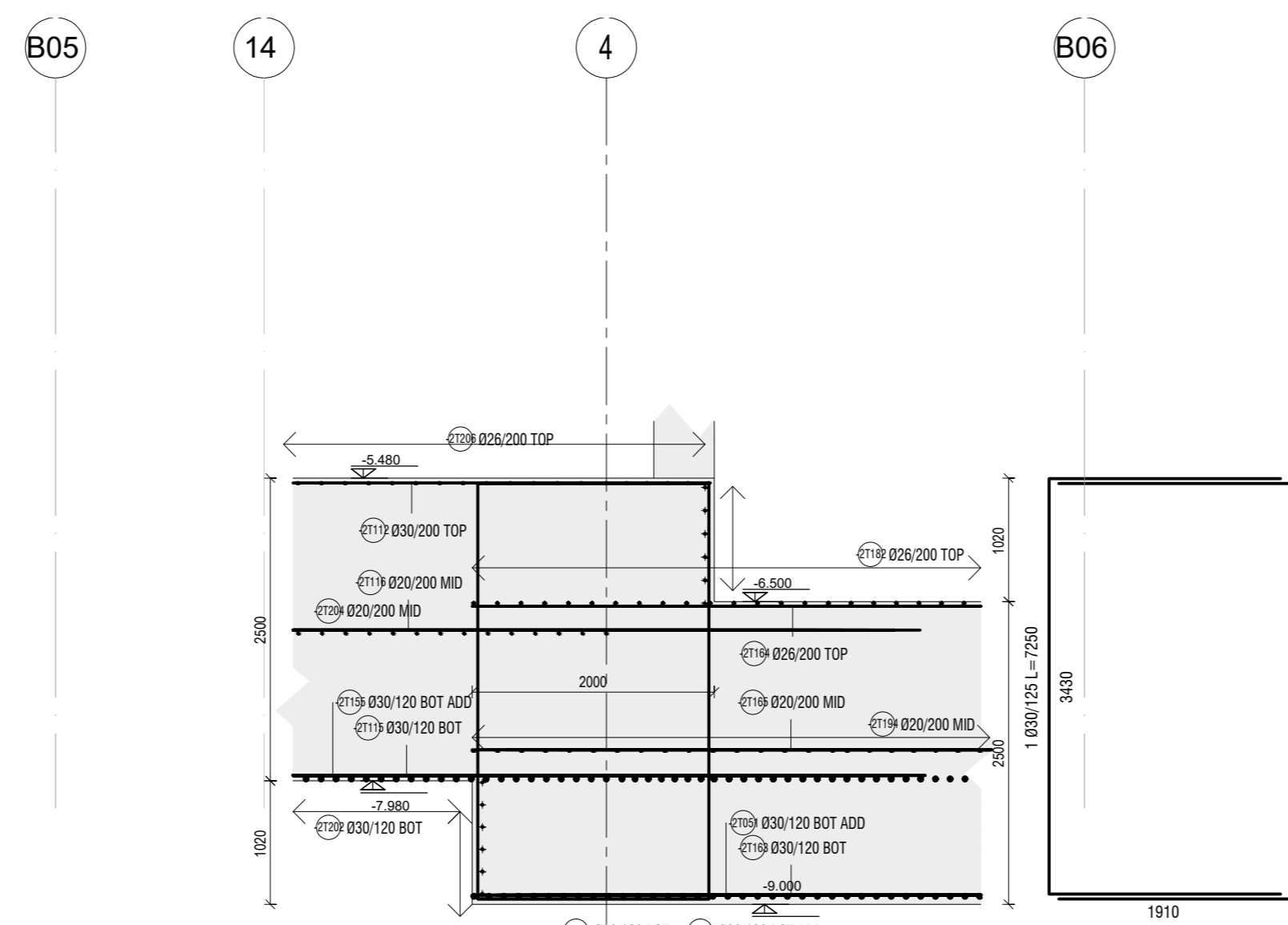
A SEKSIONI - THEMEL PLLAKË
1200mm-800mm
Shkalla 1 : 50



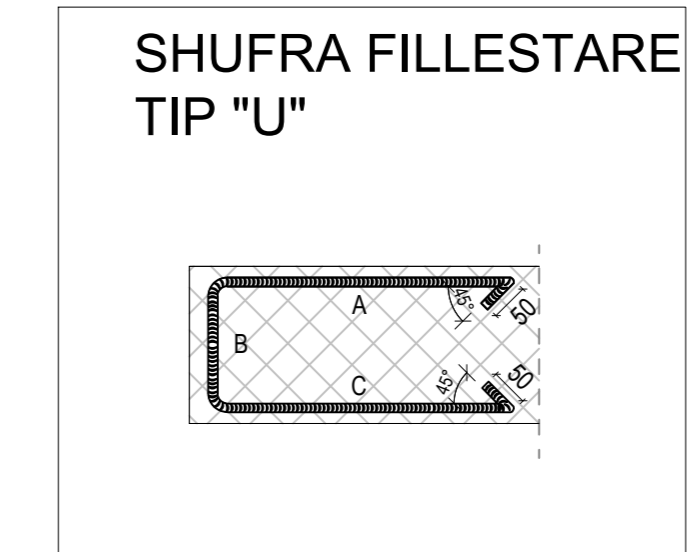
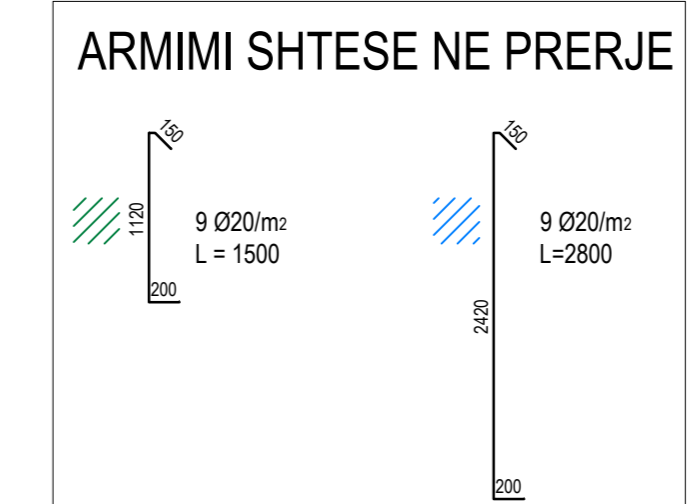
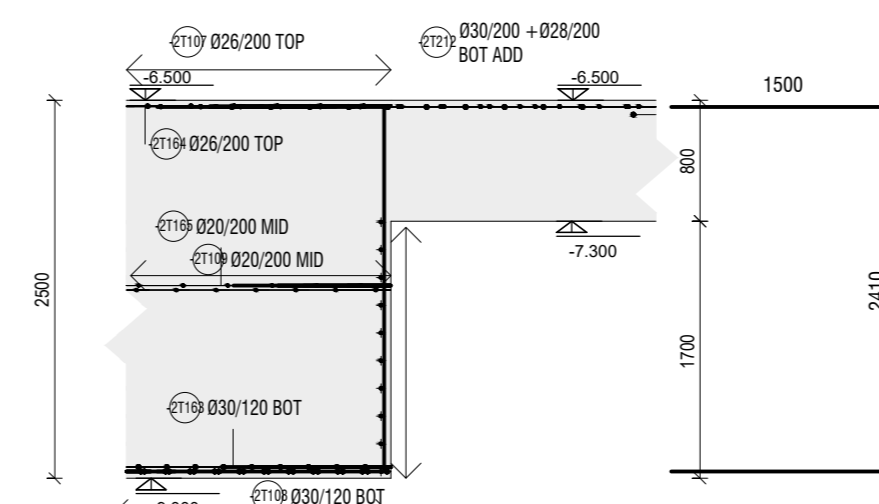
B SEKSIONI - THEMEL PLLAKË
1200mm-2500mm
Shkalla 1 : 50



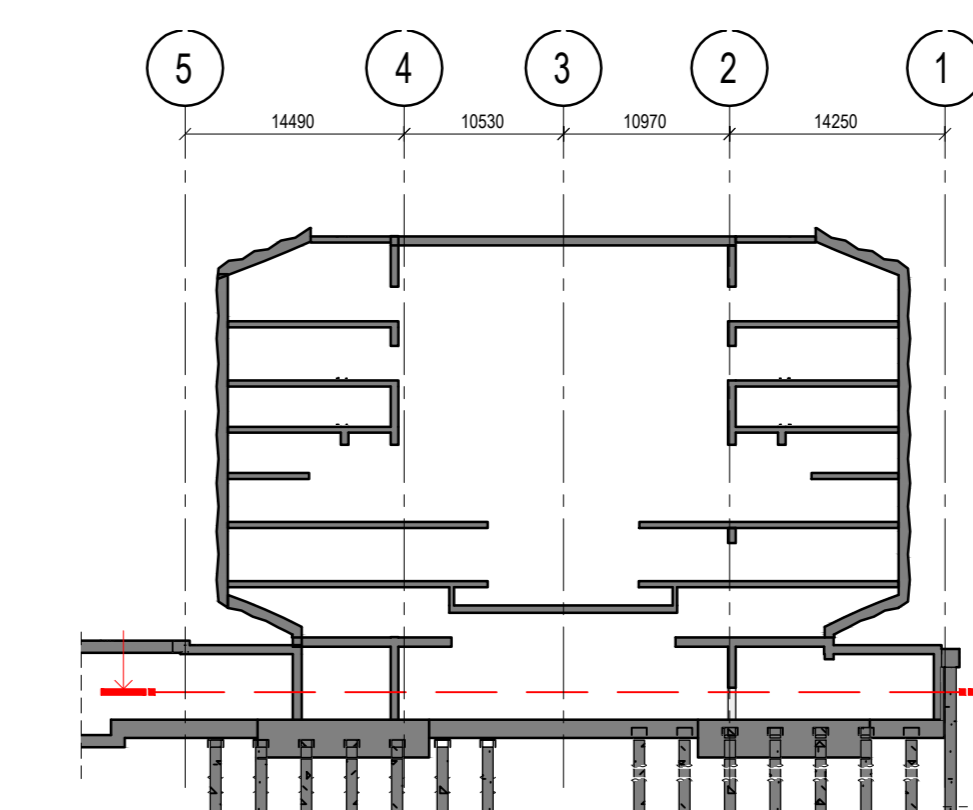
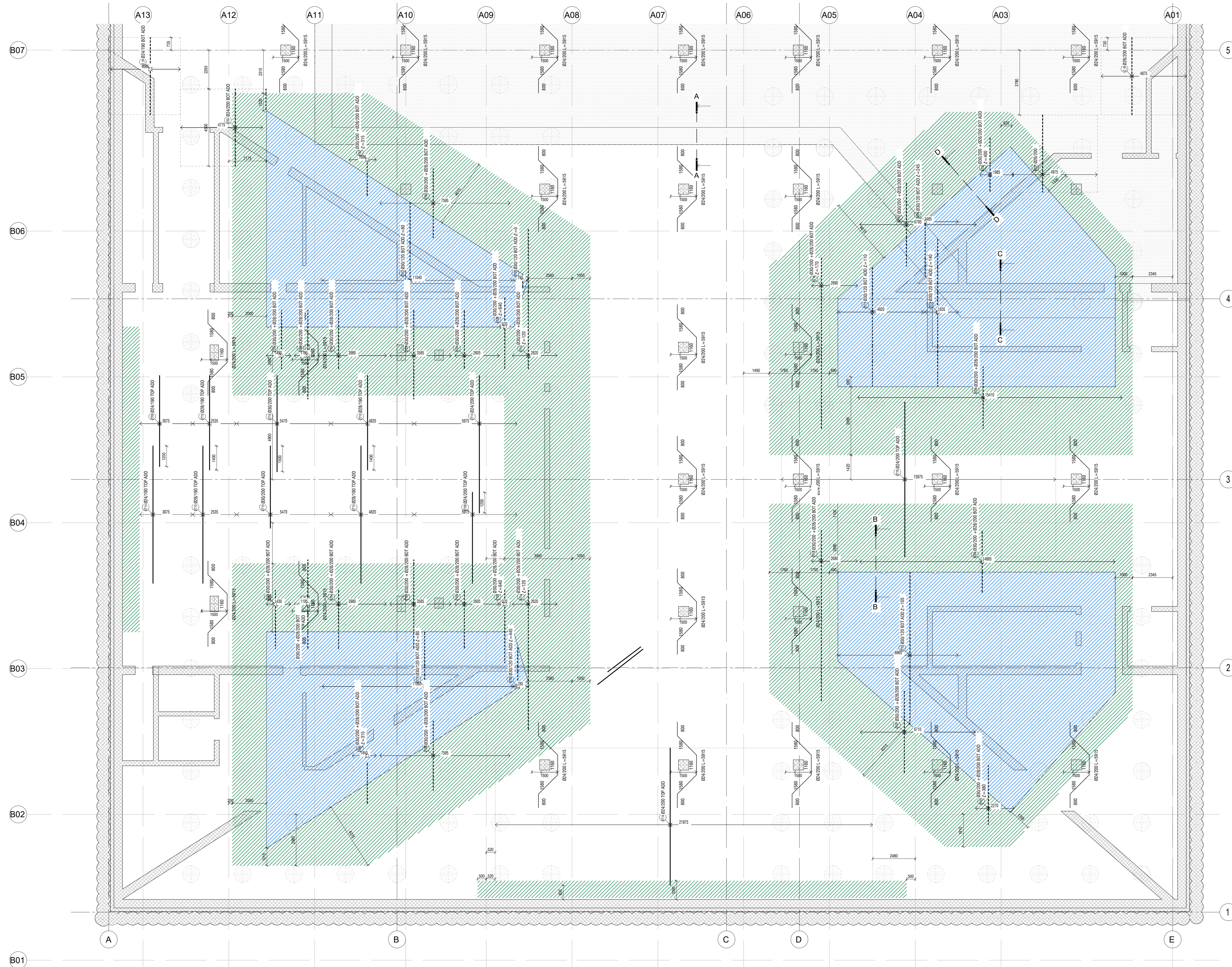
C SEKSIONI - THEMEL PLLAKË
2500mm
Shkalla 1 : 50



D SEKSIONI - THEMEL PLLAKË
2500mm-800mm
Shkalla 1 : 50



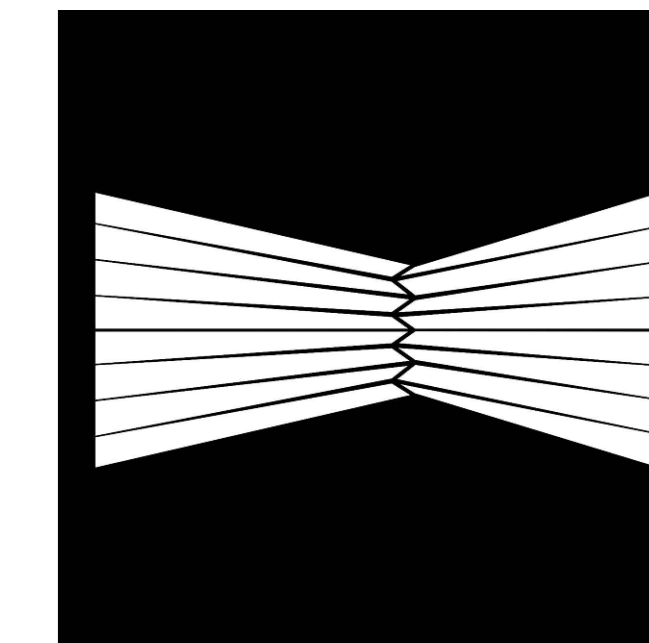
THEMELI I TEATRIT ARMIMI SHITESI SIPAS Y
Shkalla 1 : 100



KEY SECTION
Shkalla 1 : 500

SHUFRA L-2 THEMELI I TEATRIT- ARMIMI SHITESI SIPAS Y

POS.	N.	SHUFRA	GJATESIA	DIMENSIONE			GJATESIA TOTALE [m]	
				FORMA	A	B		C
-27001	7	Ø30/100 BOT ADD	770		770	0	0	5.4
-27003	1	Ø24/BOT ADD	1210		1210	0	0	1.2
-27004	6	Ø20/200 MID	1160+1680 Δ=104	<varies>	>	0	0	8.5
-27005	5	Ø20/200 MID	1470	<varies>	>	0	0	7.4
-27008	8	Ø30/100 BOT ADD	80+3190 Δ=444	<varies>	>	0	0	13.1
-27013	9	Ø20/200 MID	980+2810 Δ=229	<varies>	>	0	0	17.1
-27014	10	Ø30/200 + Ø28/200 BOT ADD	470+3320 Δ=317	<varies>	>	0	0	19.0
-27017	11	Ø20/200 MID	1150+2910 Δ=176	<varies>	>	0	0	22.3
-27018	9	Ø30/200 + Ø28/200 BOT ADD	800+3310 Δ=314	<varies>	>	0	0	18.5
-27023	11	Ø30/200 + Ø28/200 BOT ADD	310+4310 Δ=400	<varies>	>	0	0	25.4
-27025	1	Ø20/	2400	<varies>	>	2400	0	2.4
-27030	13	Ø30/200 + Ø28/200 BOT ADD	390+4970 Δ=382	<varies>	>	0	0	34.8
-27035	251	Ø20/200	2920		1000	740	100	732.9
-27046	1	Ø20/	3340		3340	0	0	3.3
-27047	72	Ø30/200 + Ø28/200 BOT ADD	3390		3390	0	0	244.1
-27047	18	Ø30/200 + Ø28/200 BOT ADD	3410		3410	0	0	61.4
-27050	76	Ø30/200 + Ø28/200 BOT ADD	3560		3560	0	0	270.6
-27051	30	Ø30/100 BOT ADD	60+7090 Δ=242	<varies>	>	0	0	107.3
-27052	79	Ø30/200 + Ø28/200 BOT ADD	3620		3620	0	0	286.0
-27059	80	Ø30/200 + Ø28/200 BOT ADD	4020		4020	0	0	321.6
-27061	3	Ø30/200 + Ø28/200 BOT ADD	3480+4760 Δ=640	<varies>	>	0	0	12.4
-27065	3	Ø30/200 + Ø28/200 BOT ADD	3610+4880 Δ=635	<varies>	>	0	0	12.7
-27073	25	Ø24/200 BOT ADD	4500		4500	0	0	112.5
-27074	26	Ø26/200	4500		4500	0	0	117.0
-27078	35	Ø30/200 + Ø28/200 BOT ADD	4770		4770	0	0	167.0
-27079	36	Ø30/200 + Ø28/200 BOT ADD	4820		4820	0	0	173.5
-27094	38	Ø30/200 + Ø28/200 BOT ADD	5160		5160	0	0	196.1
-27095	14	Ø30/200 + Ø28/200 BOT ADD	5180		5180	0	0	72.5
-27096	48	Ø24/200 TOP ADD	5300		5300	0	0	254.4
-27103	40	Ø28/200 TOP ADD	5500		5500	0	0	220.0
-27106	29	Ø30/200 TOP ADD	5600		5600	0	0	162.4
-27128	90	Ø30/100 BOT ADD	3410+10460 Δ=719	<varies>	>	0	0	624.2
-27128	90	Ø30/100 BOT ADD	3410+10470 Δ=719	<varies>	>	0	0	624.4
-27132	41	Ø30/100 BOT ADD	5190+9510 Δ=108	<varies>	>	0	0	301.4
-27138	66	Ø20/200 MID	3360+11820 Δ=126	<varies>	>	0	0	516.3
-27140	68	Ø20/200 MID	3410+11880 Δ=126	<varies>	>	0	0	519.9
-27143	30	Ø30/200 + Ø28/200 BOT ADD	7040+8710 Δ=119	<varies>	>	0	0	236.2
-27147	111	Ø24/200 TOP ADD	8000		8000	0	0	888.0
-27149	48	Ø24/200 TOP ADD	8000		8000	0	0	384.0
-27150	40	Ø28/200 TOP ADD	8000		8000	0	0	320.0
-27151	29	Ø30/200 TOP ADD	8000		8000	0	0	232.0
-27154	58	Ø30/100 BOT ADD	5190+11300 Δ=107	<varies>	>	0	0	478.4
-27155	17	Ø30/100 BOT ADD	7180+9390 Δ=138	<varies>	>	0	0	140.8
-27162	41	Ø20/200 MID	5150+12150 Δ=175	<varies>	>	0	0	354.7
-27169	81	Ø24/200 TOP ADD	9000		9000	0	0	729.0
-27174	23	Ø20/200 MID	6980+11780 Δ=218	<varies>	>	0	0	215.7
-27185	30	Ø30/200 + Ø28/200 BOT ADD	9420+11770 Δ=168	<varies>	>	0	0	317.8
-27198	5	Ø20/200 MID	11830		11830	0	0	59.2
-27204	25	Ø20/200 MID	12000		12000	0	0	300.0



A&E ENGINEERING A&E ENGINEERING sh.p.k

F&M ingegneria
Studio Konsultente
F&M INGEGNERIA S.p.a.
Via Belvedere 8/10
30035 Mirano (VE)
tel 041-5785711
fax 041-4355933

ark.	P. KAJMAKU	
ark.	Q. ZOTO	
ing.	M. HALLAJ	
ing.	E. CANO	
ing.	V. HOXHIA	
ing.	D. BUZI	
ark.	E. CANO	
ing.	N. DASHI	
projekti.	V. AVIDA	
ing.	V. HOXHIA	
ing.	A. BONAVENTURA	
ing.	A.C. NUZZO	
ing.	G. CHARALAMPOPOULOS	
ing.	A. MAGRINI	

PROJEKT "Godina e Teatrit Tirane", Faza I-re

PROJEKTI KONSTRUKTIV
EMERTAR: **THEMELI I TEATRIT ARMIMI SHITESI SIPAS Y**
S-60_0

DATA: 2021 SHKALLA: 1:100