

# ARMIMI I PLLAKES SE DYSHEMESE ZGARA E POSHTME SHKALLA 1:75

**LEGJENDE:**

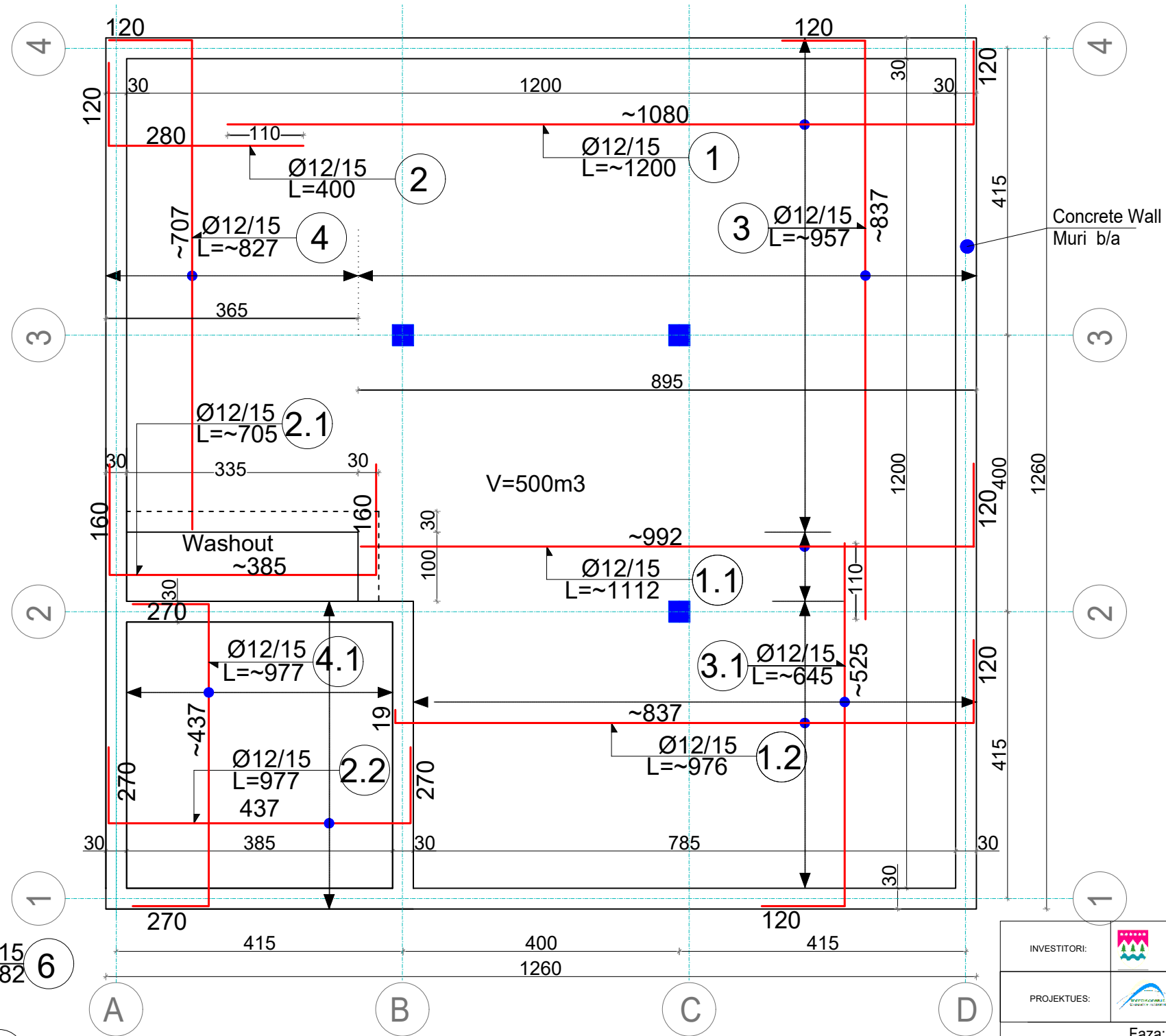
- Muri b/a      Pozicioni i murit te betonit
- Pozicioni i kollones, b=30x30cm
- A** Axi ne djetimin y-y
- 1** Axi ne drejtimin x-x
- ▶ Drejtimi i prerjeve ne akse per armimin

**Note:** Dimensionet jepen ne cm

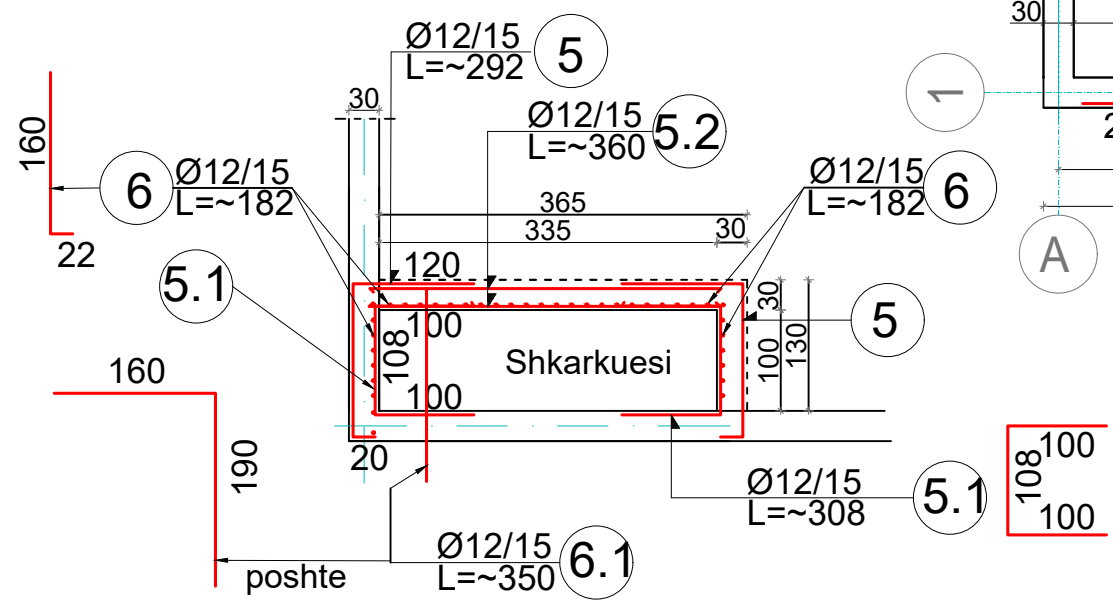
Ø12/15 L=~1200	<b>1</b>	Numeri i shufrave
	Ø12	Diametri i shufrave ne mm
	/15	Distanca midis shufrave ne cm
	L=~1200	Gjatesia e shufrave ne cm

**Note:**

- Betoni per platene, soleten muret dhe kollonat duhet te jete i tipit C25 /30
- Hekur i tipit FeB 44
- Betoni per shtresen e varfer dhe pjerresite duhet te jete i tipit C15
- Waterstopi duhet te jete i klases 2M ose PE
- Betoni do te hidhet sipas fazave A,B,C.
- Pjerresia e platese se dyshemese duhet 0.5%
- Shtresa mbrojtese per platene dhe per muret duhet te jete t=4cm.
- Shtresa mbrojtese per kollonen dhe soleten duhet te jete t=3cm
- Dimensionet jane dhene ne [ cm ]



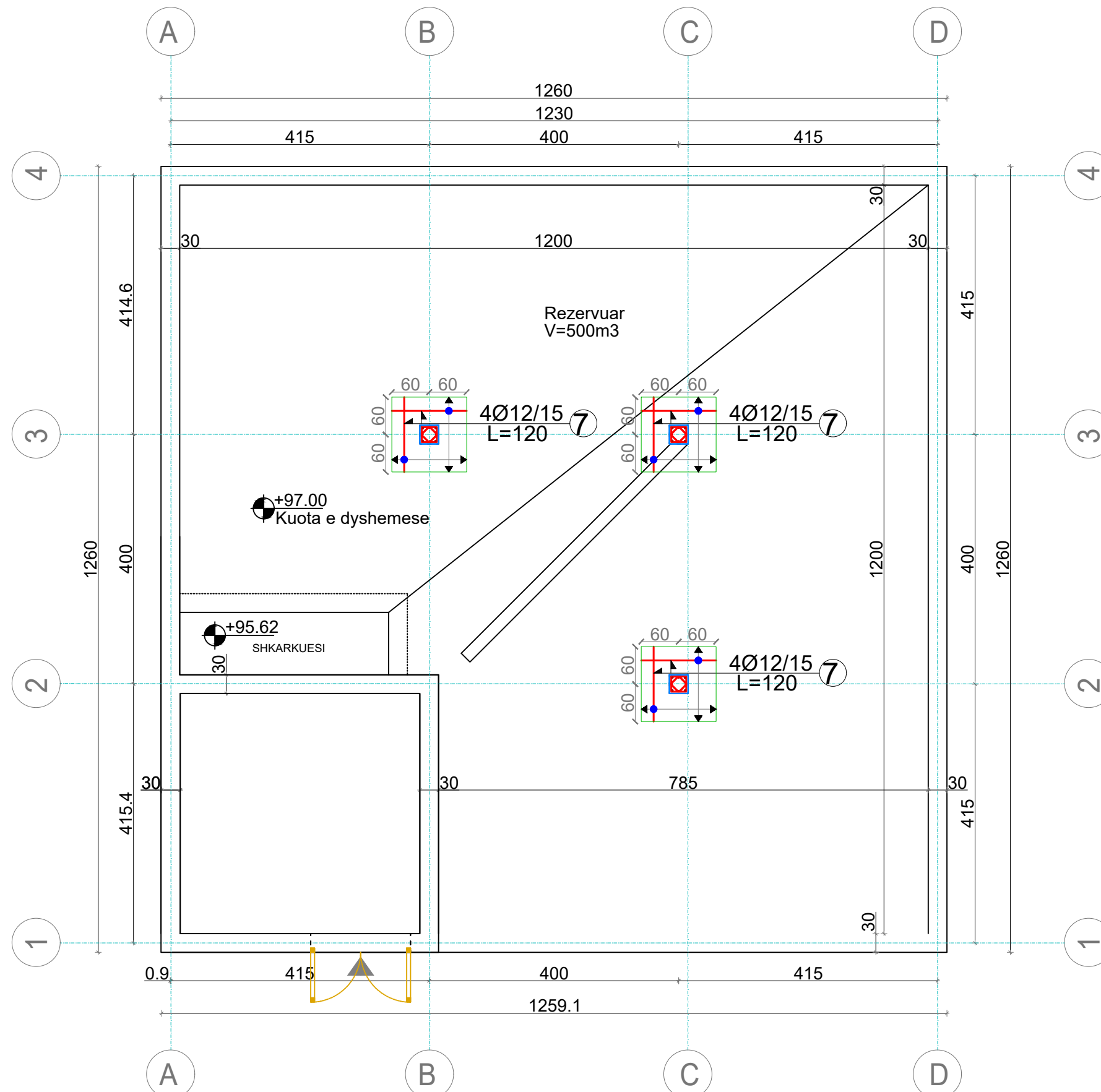
## ARMIM SHITESE PER SHKARKUESIN SH 1:50



INVESTITORI:	Bashkia Malësia e Madhe
PROJEKTUES:	InfraKonsult
Faza: Projekt-Zbatim	
<b>OBJEKTI: "NDERTIMI I UJESJELLESIT TE BAJZES DHE FSHATRAVE PERRETH", LOTI II</b>	
<b>Armimi i Zgares se Dyshemese, Zgara e Poshtme (V rezervuarit = 500m³)</b>	
DREJTOR PROJEKTI:	Ing. Sulejman Shemsiu
PROJEKTUES:	Ing. Redi STRUGA Ing. Olsi BARKO Ing. Sokol METOJA Ing. Fatmir BEXHDILI Ing. Kejvin PASHOLLARI Ing. Orgest MERTIKA Ing. Renato LLOZHI
SHKALLA: 1: 75	Data: Gusht, 2024
Vizatimi Nr: E/a.16	

# ARMIMI SHITESE I PLLAKES SE DYSHEMESE ZGARA E POSHTME

## SHKALLA 1:75



### LEGJENDE:

- Muri b/a Pozicioni i murit te betonit
  - Pozicioni i kollones, b=30x30cm
  - A Axi ne djetimin y-y
  - 1 Axi ne drejtimin x-x
  - ▶ Drejtimi i prerjeve ne akse per armimin
- Note: Dimensionet jepen ne cm

$\uparrow$ Ø12/15 L=1200	①	→ Numeri i shufrave
	Ø12	→ Diametri i shufrave ne mm
	/15	→ Distanca midis shufrave ne cm
	L=1200	→ Gjatësia e shufrave ne cm

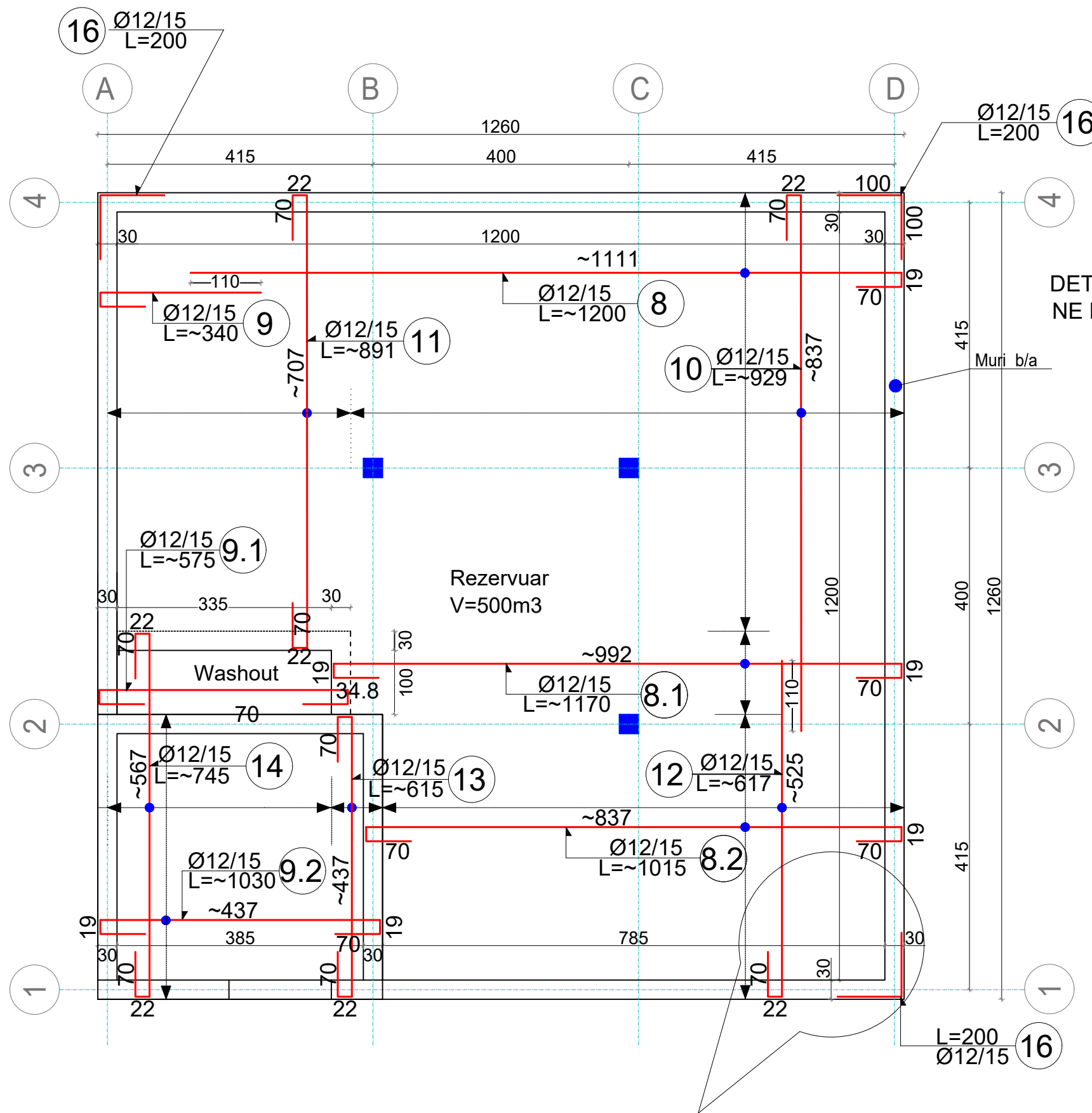
### Note:

1. Betoni per platene , soleten muret dhe kollonat duhet te jete i tipit C25 /30
2. Hekur i tipit FeB 44
3. Betoni per shtresen e varfer dhe pjerresite duhet te jete i tipit C15
5. Waterstopi duhet te jete i klases 2M ose PE
6. Betoni do te hidhet sipas fazave A,B,C.
7. Pjerresia e plateve se dyshemese duhet 0.5%
8. Shtresa mbrojtese per platene dhe per muret duhet te jete t=4cm.
9. Shtresa mbrojtese per kollonen dhe soleten duhet te jete t=3cm
10. Dimensionet jane dhene ne [ cm ]

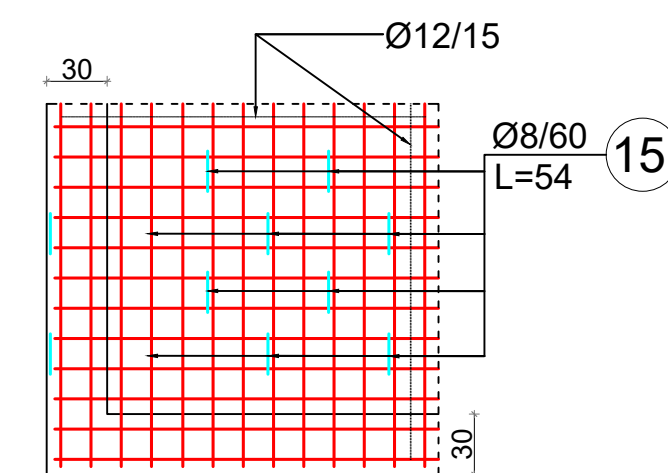
INVESTITORI:		Bashkia Malesia e Madhe
PROJEKTUES:		InfraKonsult
Faza:Projekt-Zbatim		
<b>OBJEKTI: "NDERTIMI I UJESJELLESIT TE BAJZES DHE FSHATRAVE PERRETH", LOTI II</b>		
<b>Armimi Shtese i Pllakes se Dyshemese, Zgara e Poshtme (V Rezevuarit=500m3)</b>		
DREJTOR PROJEKTI:	Ing. Sulejman Shemsiu	
PROJEKTUES:	Ing. Redi STRUGA Ing. Olsi BARKO Ing. Sokol METOJA Ing. Fatmir BEXHDILI Ing. Kejvin PASHOLLARI Ing. Orgest MERTIKA Ing. Renato LLOZHI	
SHKALLA: 1: 75	Data: Gusht, 2024	
Vizatimi Nr: E/a.17		

# ARMIMI I PLLAKES SE DYSHEMESE ZGARA E SIPERME

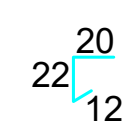
## SHKALLA 1:75





DETAJI I SHPERNDARJES SE GANXHAVE LIDHESE NE PLLAKEN E DYSHEMESE SH 1:50



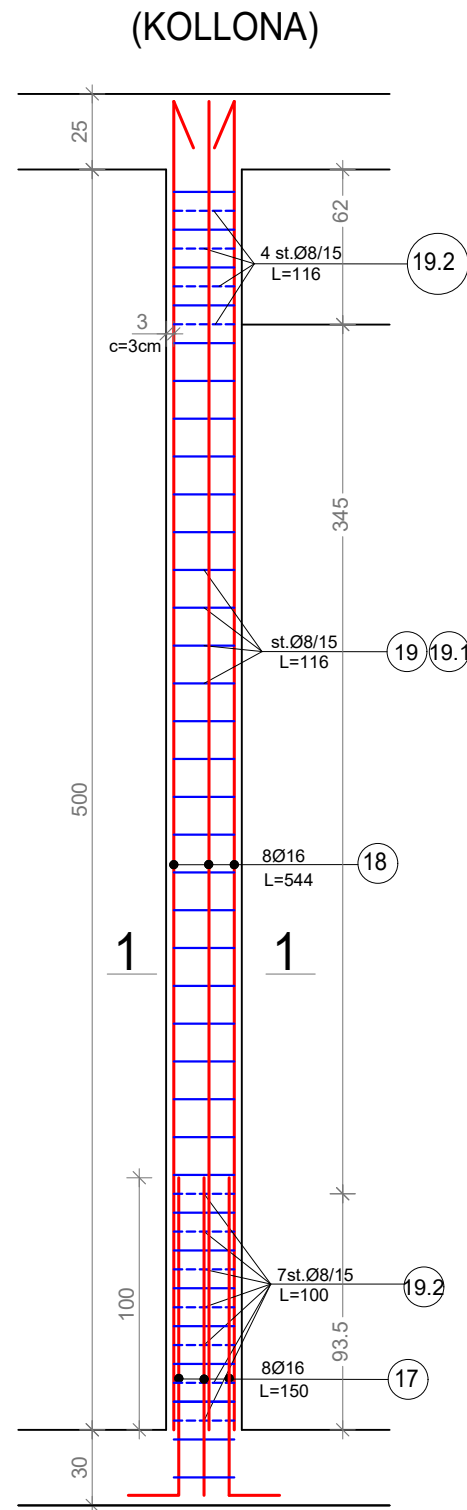
ganxha lidhese te zgares poshte & larte



DETAJI I SHPERNDARJES SE GANXHAVE LIDHESE NE PLLAKEN E DYSHEMESE SH 1:50

INVESTITORI:	 Bashkia Malesia e Madhe
PROJEKTUES:	 InfraKonsult
Faza: Projekt-Zbatim	
OBJEKTI: "NDERTIM I UJESJELLESIT TE BAJZES DHE FSHATRAVE PERRETH", LOTI II	
<b>Armim i Pllakes se Dyshemese, Zgara e Siperme (V Rezervuarit=500m3)</b>	
DREJTOR PROJEKTI:	Ing. Sulejman Shemsiu
PROJEKTUES:	Ing. Redi STRUGA Ing. Olsi BARKO Ing. Sokol METOJA Ing. Fatmir BEXHDILI Ing. Kejvin PASHOLLARI Ing. Orgest MERTIKA Ing. Renato LLOZHI
SHKALLA: 1: 75	Data: Gusht, 2024
Vizatimi Nr: E/a.18	

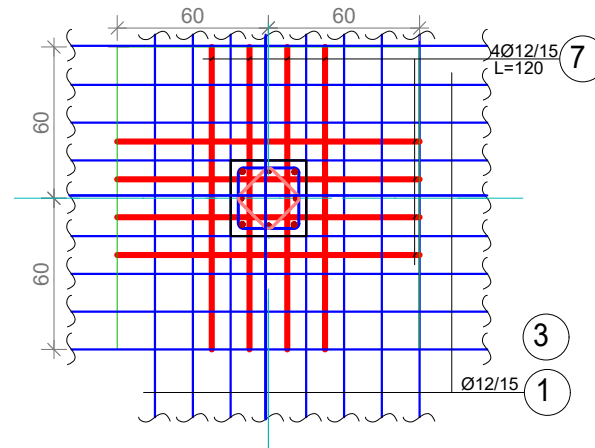
# ARMIMI I KOLLONAVE DHE HOLLESIS SHKALLA 1:30



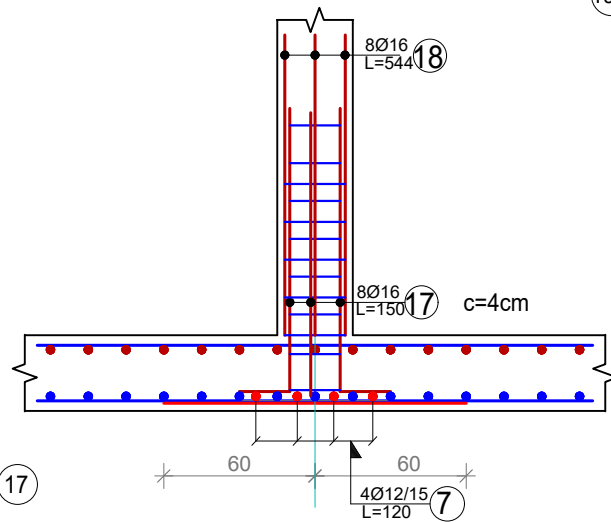
LEGJENDE:

$\overline{\text{Ø12/15}}$ (1)	→	Numeri i shufrave
Ø12	→	Diametri i shufrave ne mm
/15	→	Distanca midis shufrave ne cm
L=1200	→	Gjatësia e shufrave ne cm

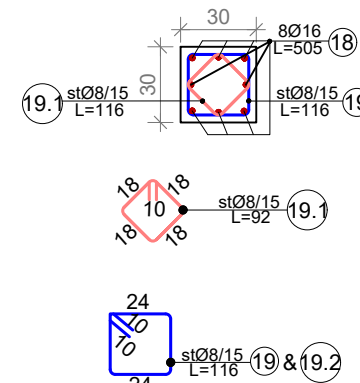
Plani i vendosjes se shufrave ne lidhje me pllaken e dyshemese



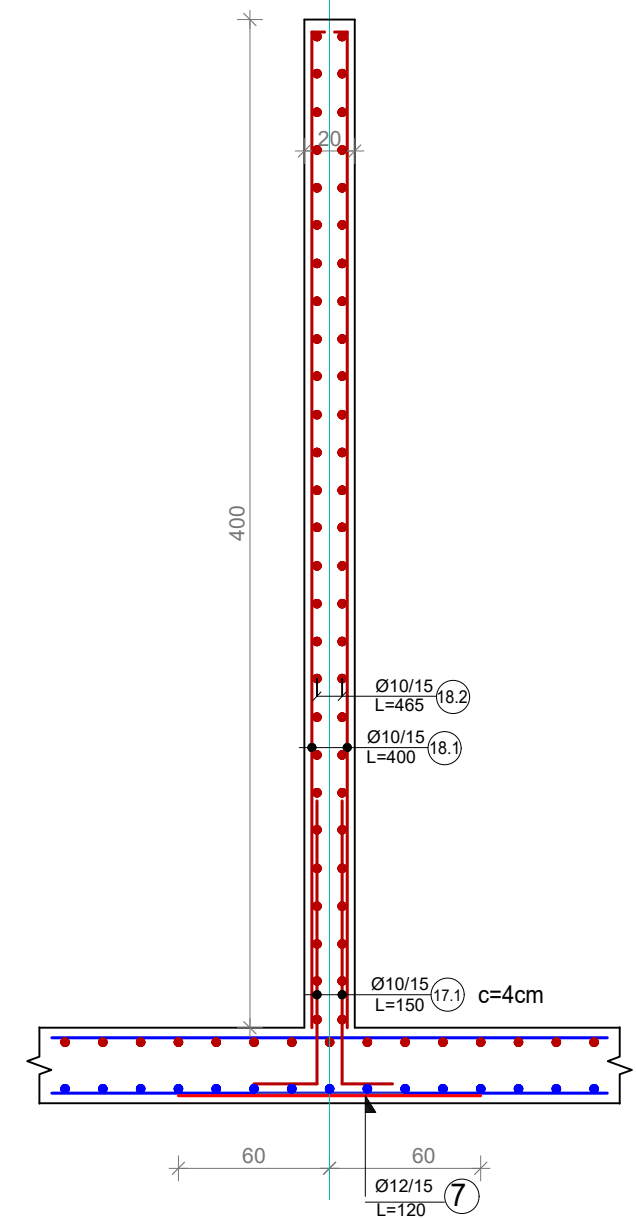
Detaj i lidhjes te kollones me pllaken e dyshemese



PRERJA 1-1



(MURI I BRENDSHEM)



SHENIM:

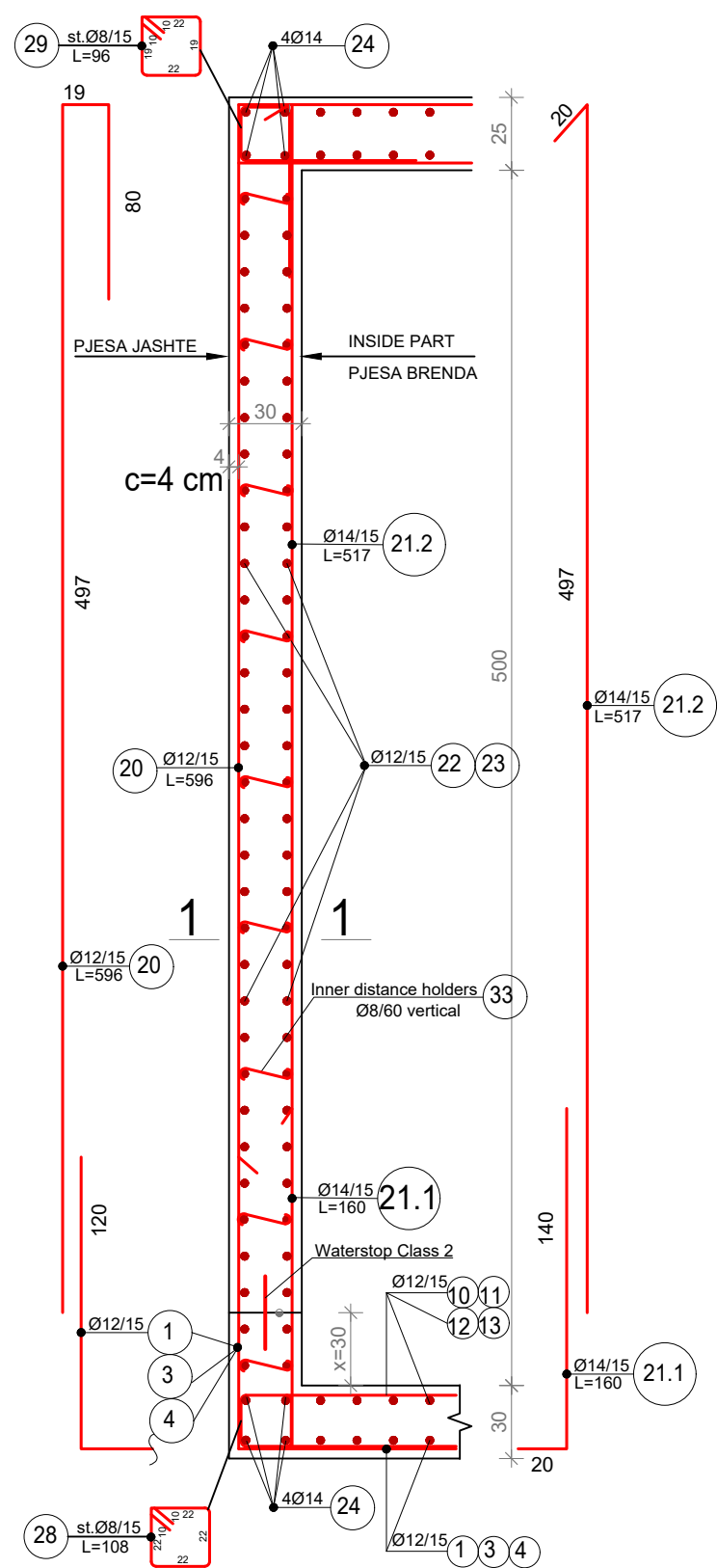
1. Betoni per platene , soleten muret dhe kollonat duhet te jete i tipit C25 /30
2. Hekur i tipit FeB 44
3. Betoni per shtresen e varfer dhe pjerresite duhet te jete i tipit C15
5. Waterstopi duhet te jete i klases 2M ose PE
6. Betoni do te hidhet sipas fazave A,B,C.
7. Pjerresia e platese se dyshemese duhet 0.5%
8. Shtresa mbrojtese per platene dhe per muret duhet te jete t=4cm.
9. Shtresa mbrojtese per kollonen dhe soleten duhet te jete t=3cm
10. Dimensionet jane dhene ne [ cm ]

INVESTITORI:	Bashkia Malesia e Madhe
PROJEKTUES:	InfraKonsult
Faza:Projekt-Zbatim	
OBJEKTI: "NDERTIM I UJESJELLESIT TE BAJZES DHE FSHATRAVE PERRETH", LOTI II	
Armimi i Kollonave dhe Hollesis (V Rezevuarit=500m3)	
DREJTOR PROJEKTI:	Ing. Sulejman Shemsiu
PROJEKTUES:	Ing. Redi STRUGA Ing. Olsi BARKO Ing. Sokol METOJA Ing. Fatmir BEXHDILI Ing. Kejvin PASHOLLARI Ing. Orgest MERTIKA Ing. Renato LLOZHI
SHKALLA: 1: 30	Data: Gusht, 2024
Vizatimi Nr: E/a.19	

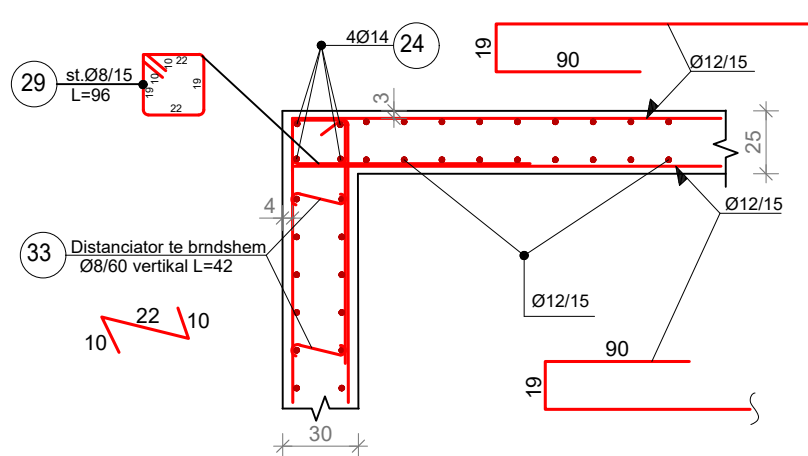
# ARMIMI I MURIT DHE DETAJE

## SHKALLA 1:30

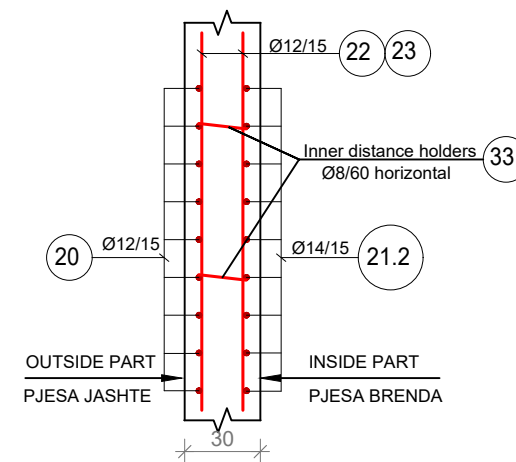
ARMIMI TIP I MURIT



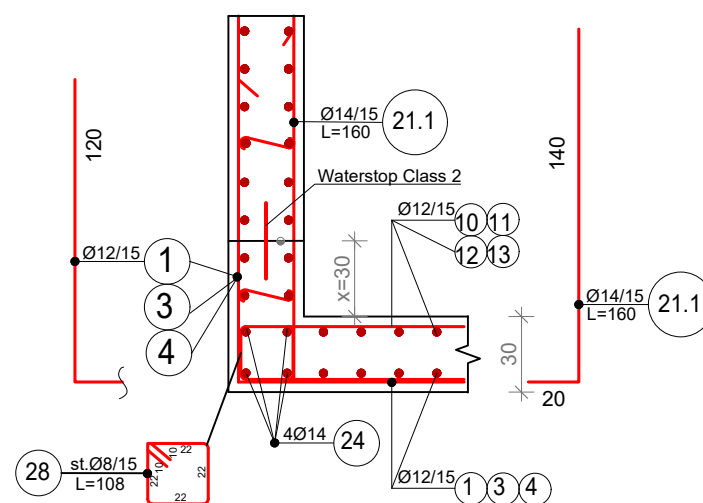
Detaj armimi i bashkimit te murit b/a me soleten c=3.0 cm



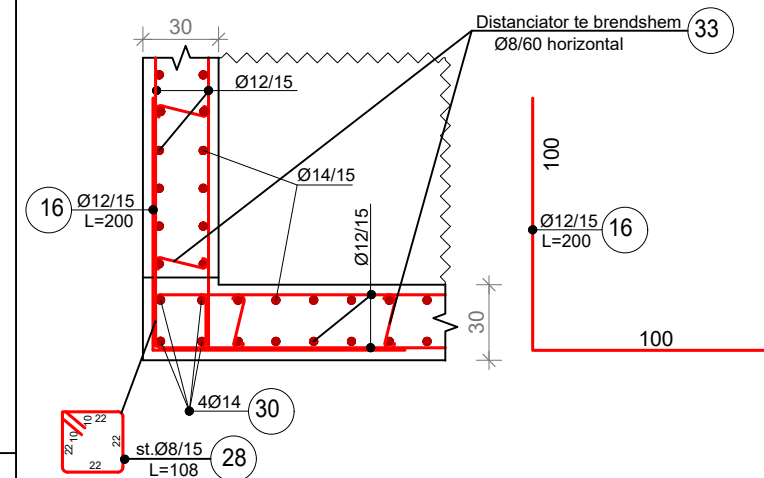
PRERJA 1-1



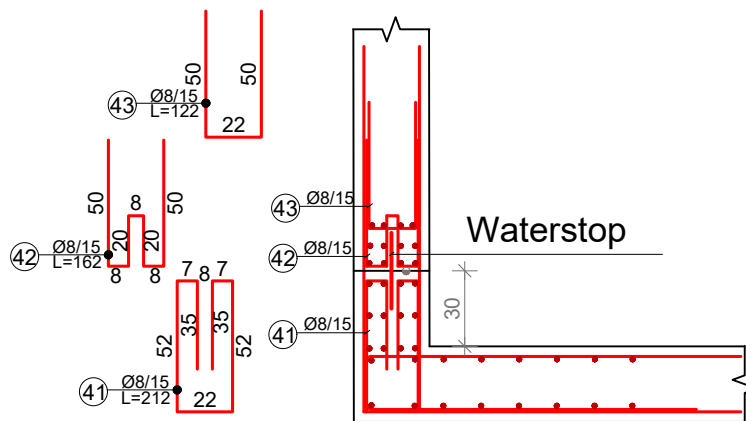
Detaj armimi i bashkimit te murit b/a me pllaken e themelit c=4.0 cm





Detaj tip i armimit ne bashkimet e murit me mur b/a Prerje horizontale c=4.0 cm

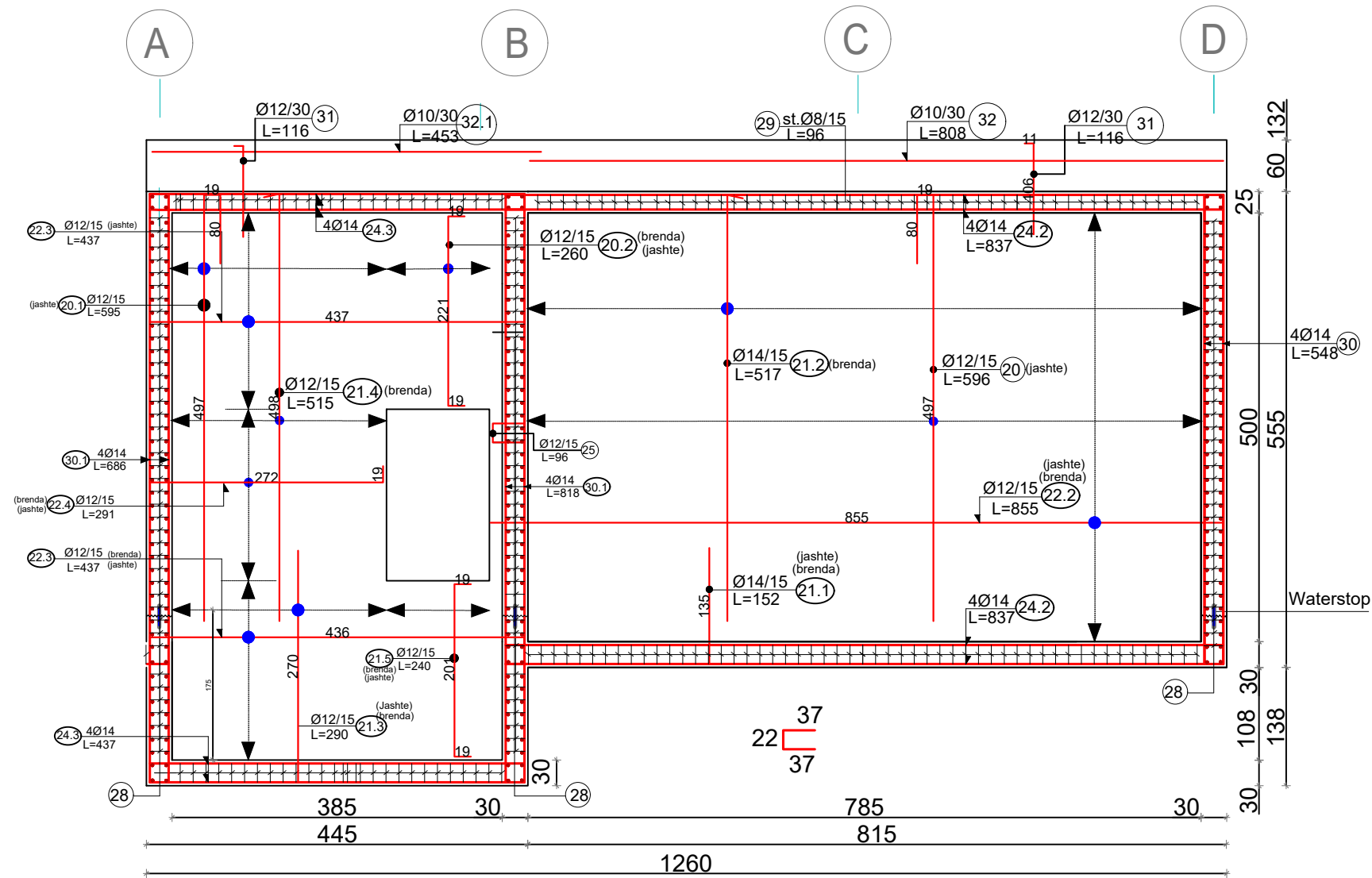


Detaj i armimit per mbrojtjen e waterstopit



INVESTITORI:	 Bashkia Malesia e Madhe
PROJEKTUES:	 InfraKonsult
Faza:Projekt-Zbatim	
OBJEKTI: "NDERTIMI I UJESJELLESIT TE BAJZES DHE FSHATRAVE PERRETH", LOTI II	
<b>Armimi i Murit dhe detaje (V Rezevuari=500m3)</b>	
DREJTOR PROJEKTI: Ing. Sulejman Shemsiu	
PROJEKTUES:	Ing. Redi STRUGA Ing. Olsi BARKO Ing. Sokol METOJA Ing. Fatmir BEXHDILI Ing. Kejvin PASHOLLARI Ing. Orgest MERTIKA Ing. Renato LLOZHI
SHKALLA: 1: 30	Data: Gusht, 2024 Vizatimi Nr: E/a.20

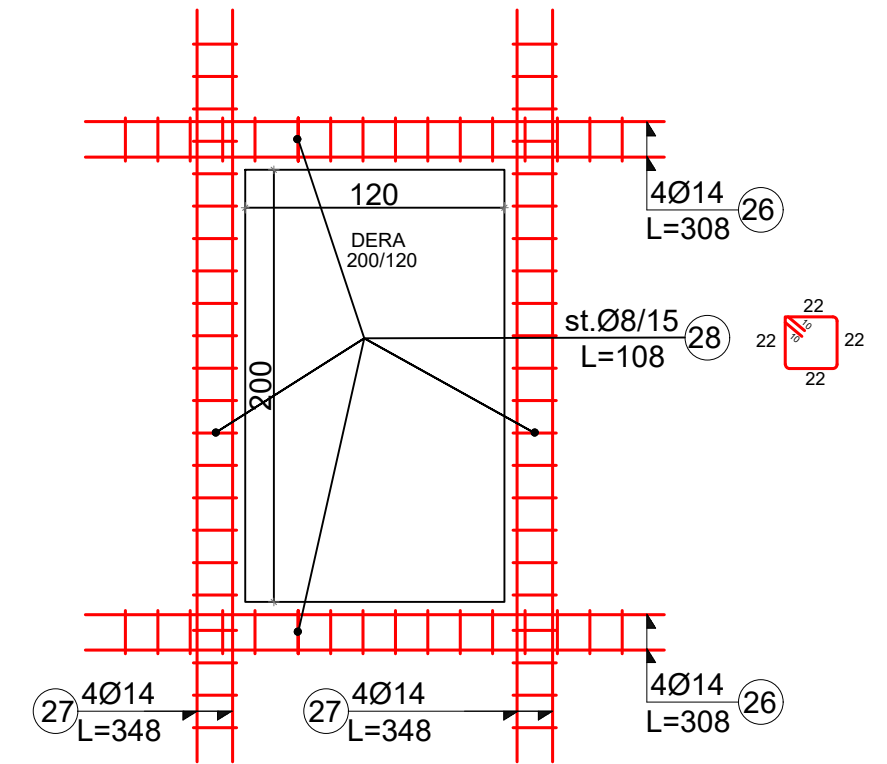
# MURET, PRERJA AKSI 1-1, Sh. 1:70





## LEGJENDE:

$\text{Ø}12/15$ L~1200	①	Numeri i shufrave
$\text{Ø}12$	→	Diametri i shufrave ne mm
/15	→	Distanca midis shufrave ne cm
st.Ø8/15 L=130	②8.1	Gjatesia e shufrave ne cm
++	→	Stafa

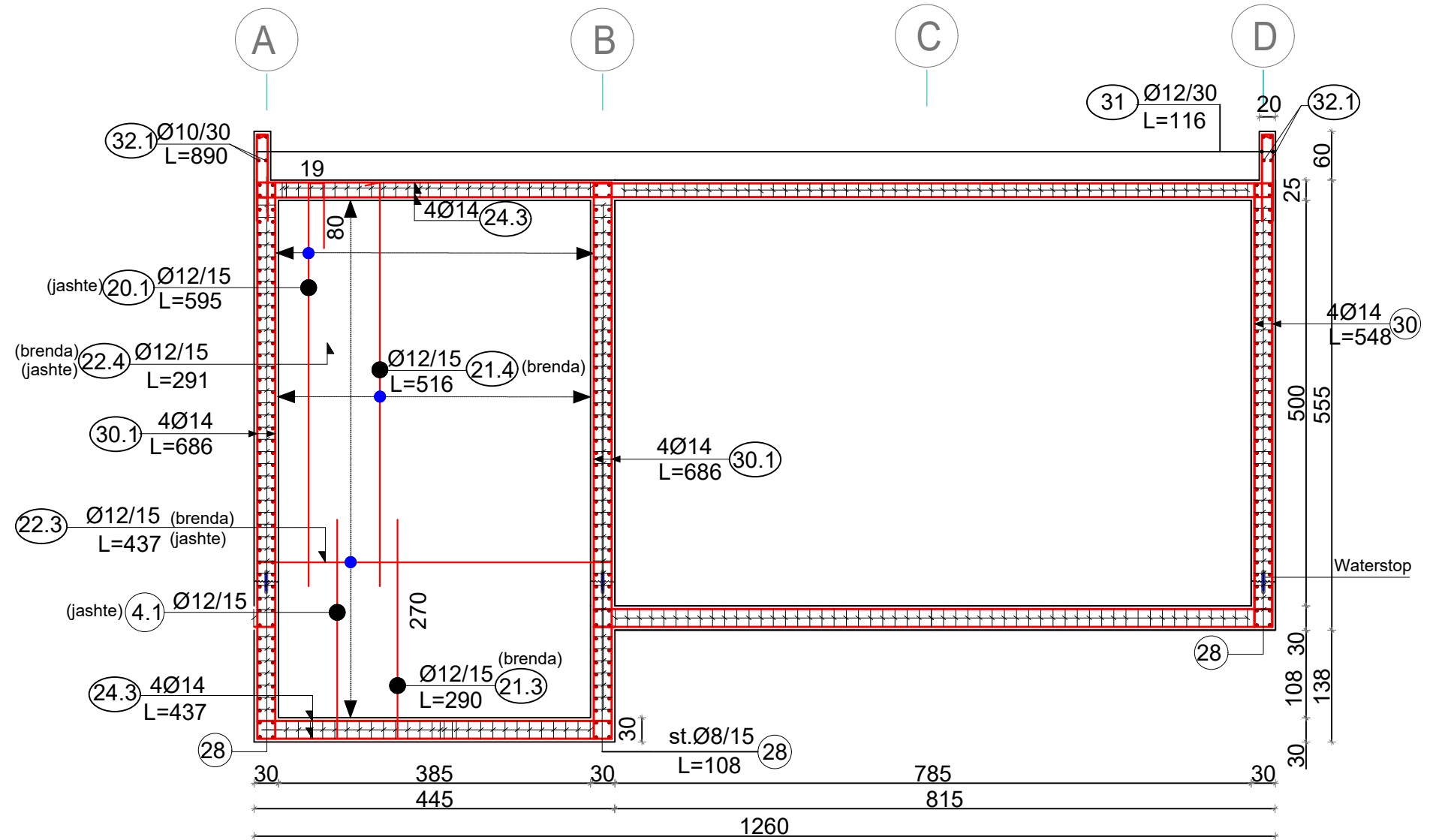
## DETAJI I ARMIMIT TE PORTES SHK. 1:35



INVESTITORI:	 Bashkia Malësia e Madhe
PROJEKTUES:	 InfraKonsult
Faza:Projekt-Zbatim	
OBJEKTI: "NDERTIM I UJESJELLESIT TE BAJZES DHE FSHATRAVE PERRETH", LOTI II	
<b>Muret, Prerja Aksi 1-1 (V Rezevuarit=500m3)</b>	
DREJTOR PROJEKTI:	Ing. Sulejman Shemsiu
PROJEKTUES:	Ing. Redi STRUGA Ing. Olsi BARKO Ing. Sokol METOJA Ing. Fatmir BEHXDILI Ing. Kejvin PASHOLLARI Ing. Orgest MERTIKA Ing. Renato LLOZHI
SHKALLA: 1: 70 1: 35	Data: Gusht, 2024 Vizatimi Nr: E/a.21

# MURET, PRERJA AKSI 2-2, Sh. 1:70

## MURET, PRERJA AKSI B-B (2-2) SH 1:75

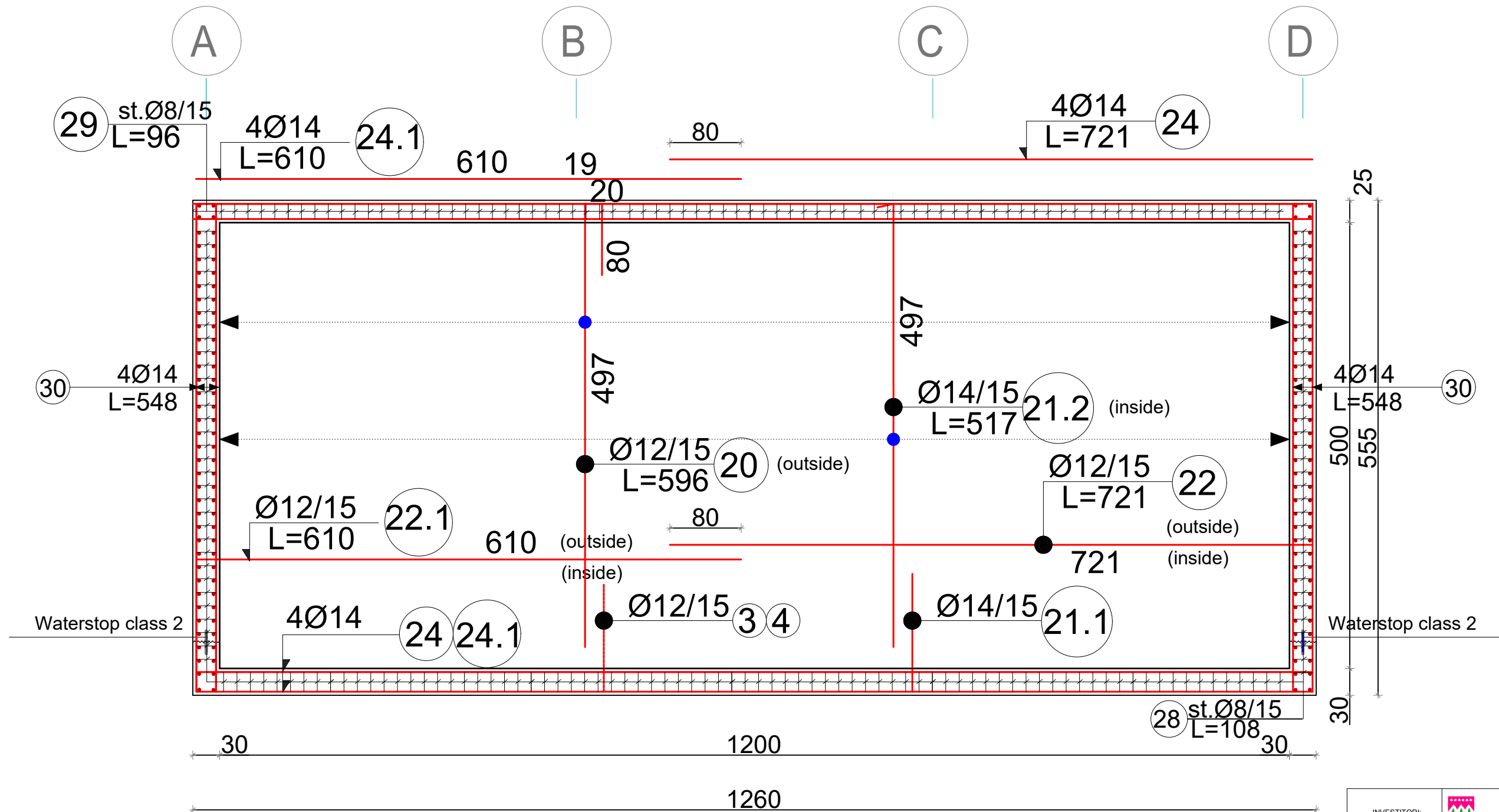


### LEGJENDE:

	1	→	Numeri i shufrave
	Ø12	→	Diametri i shufrave ne mm
	/15	→	Distanca midis shufrave ne cm
	L=~1200	→	Gjatesia e shufrave ne cm
	++	→	Stafa

INVESTITORI:		Bashkia Malesia e Madhe
PROJEKTUES:		InfraKonsult
Faza:Projekt-Zbatim		
OBJEKTI: "NDERTIMI I UJESJELLESIT TE BAJZES DHE FSHATRAVE PERRETH", LOTI II		
<b>Muret, Prerja Aksi 2-2 (V Rezevuarit=500m3)</b>		
DREJTOR PROJEKTI: Ing. Sulejman Shemsiu		
PROJEKTUES:	Ing. Redi STRUGA Ing. Olsi BARKO Ing. Sokol METOJA Ing. Fatmir BEXHDILI Ing. Kejvin PASHOLLARI Ing. Orgest MERTIKA Ing. Renato LLOZHI	
SHKALLA: 1: 70	Data: Gusht, 2024	
Vizatimi Nr: E/a.22		

# MURET, PRERJA AKSI 4-4, Sh. 1:50



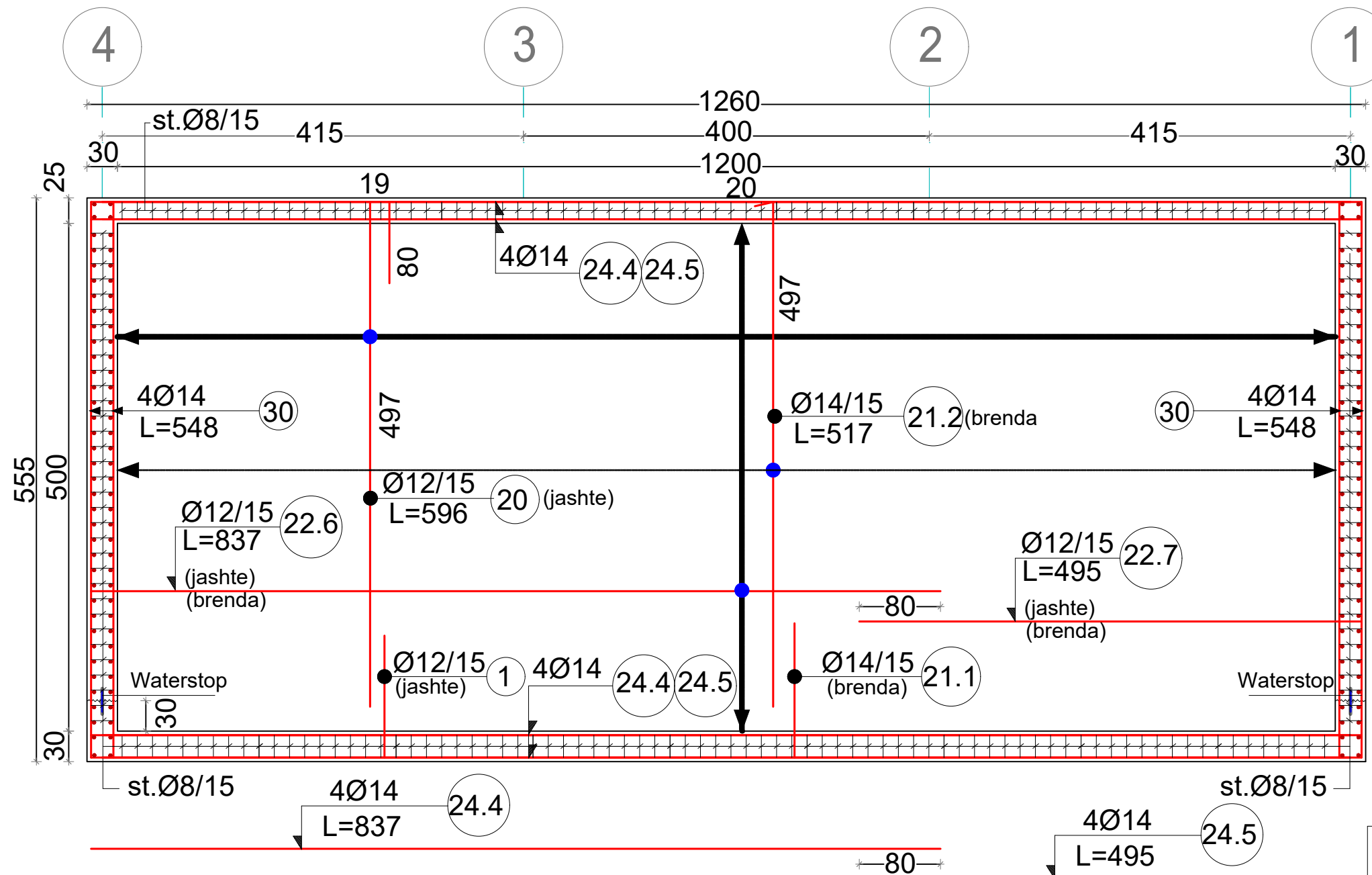
## LEGJENDE:

	1	→	Numeri i shufrave
	Ø12	→	Diametri i shufrave ne mm
	/15	→	Distanca midis shufrave ne cm
	L=1200	→	Gjatesia e shufrave ne cm
	28.1	→	Stafa

INVESTITORI:	Bashkia Malesia e Madhe
PROJEKTUES:	InfraKonsult
Faza:Projekt-Zbatim	
OBJEKTI: "NDERTIM I UJESJELLESIT TE BAJZES DHE FSHATRAVE PERRETH", LOTI II	
<b>Muret, Prerja Aksi 4-4</b> (V Rezevuarit=500m3)	
DREJTOR PROJEKTI:	Ing. Sulejman Shemsiu
PROJEKTUES:	Ing. Redi STRUGA Ing. Olsi BARKO Ing. Sokol METOJA Ing. Fatmir BEXHDILI Ing. Kejvin PASHOLLARI Ing. Orgest MERTIKA Ing. Renato LLOZHI
SHKALLA: 1: 50	Data: Gusht, 2024
Vizatimi Nr: E/a.23	



# MURET, PRERJA AKSI D-D, Sh. 1:50

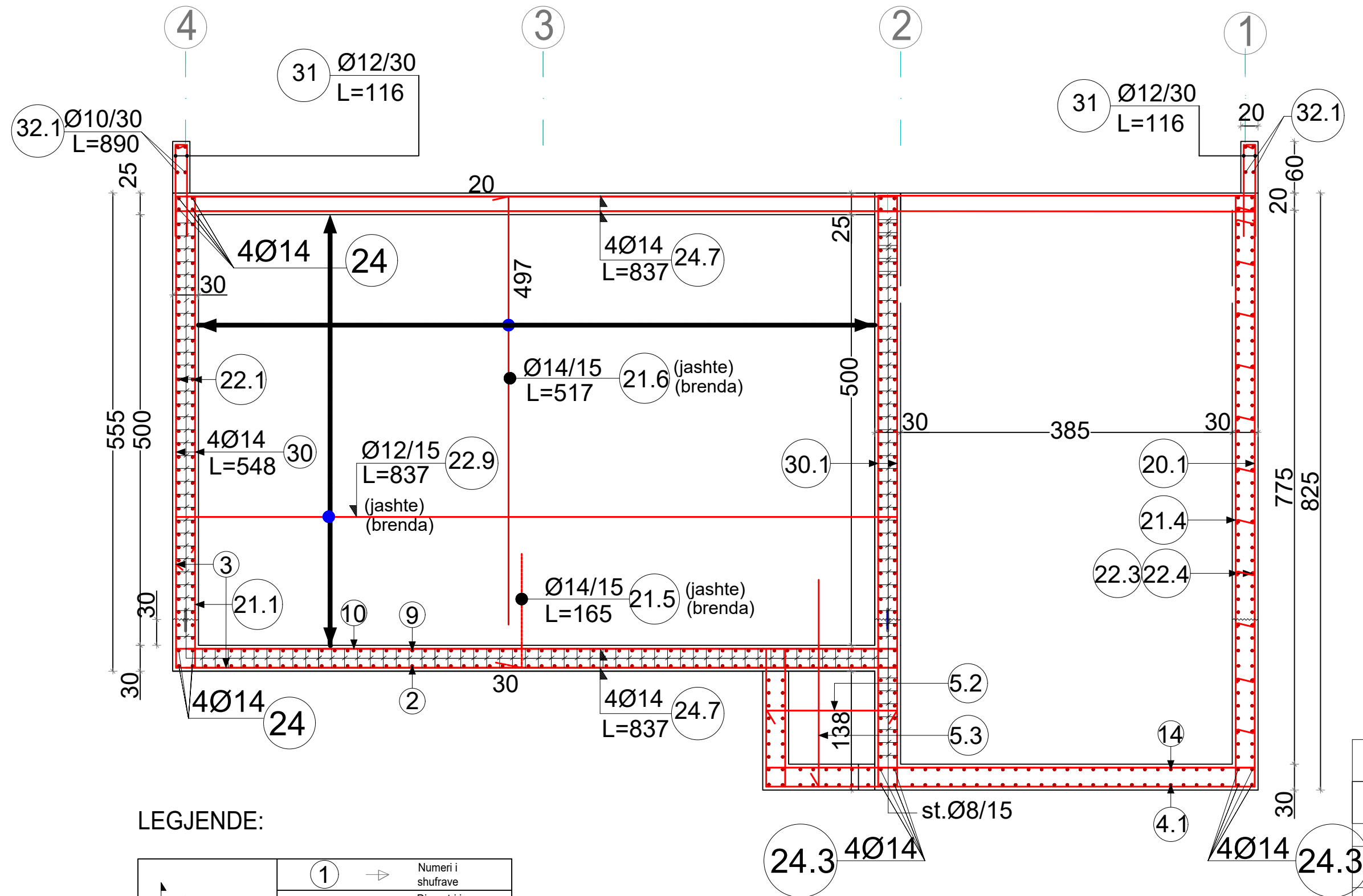


## LEGJENDE:

	①	→	Numeri i shufrave
	Ø12	→	Diametri i shufrave ne mm
	/15	→	Distanca midis shufrave ne cm
	L=130	→	Gjatesia e shufrave ne cm
	++	→	Stafa



INVESTITORI:	Bashkia Malesia e Madhe
PROJEKTUES:	InfraKonsult
Faza:Projekt-Zbatim	
OBJEKTI: "NDERTIM I UJESJELLESIT TE BAJZES DHE FSHATRAVE PERRETH", LOTI II	
<b>Muret, Prerja Aksi D-D (V Rezevuarit=500m3)</b>	
DREJTOR PROJEKTI:	Ing. Sulejman Shemsiu
PROJEKTUES:	Ing. Redi STRUGA Ing. Olsi BARKO Ing. Sokol METOJA Ing. Fatmir BEXHDILI Ing. Kejvin PASHOLLARI Ing. Orgest MERTIKA Ing. Renato LLOZHI
SHKALLA: 1: 50	Data: Gusht, 2024
Vizatimi Nr: E/a.24	

# MURET, PRERJA AKSI A-A, Sh. 1:50

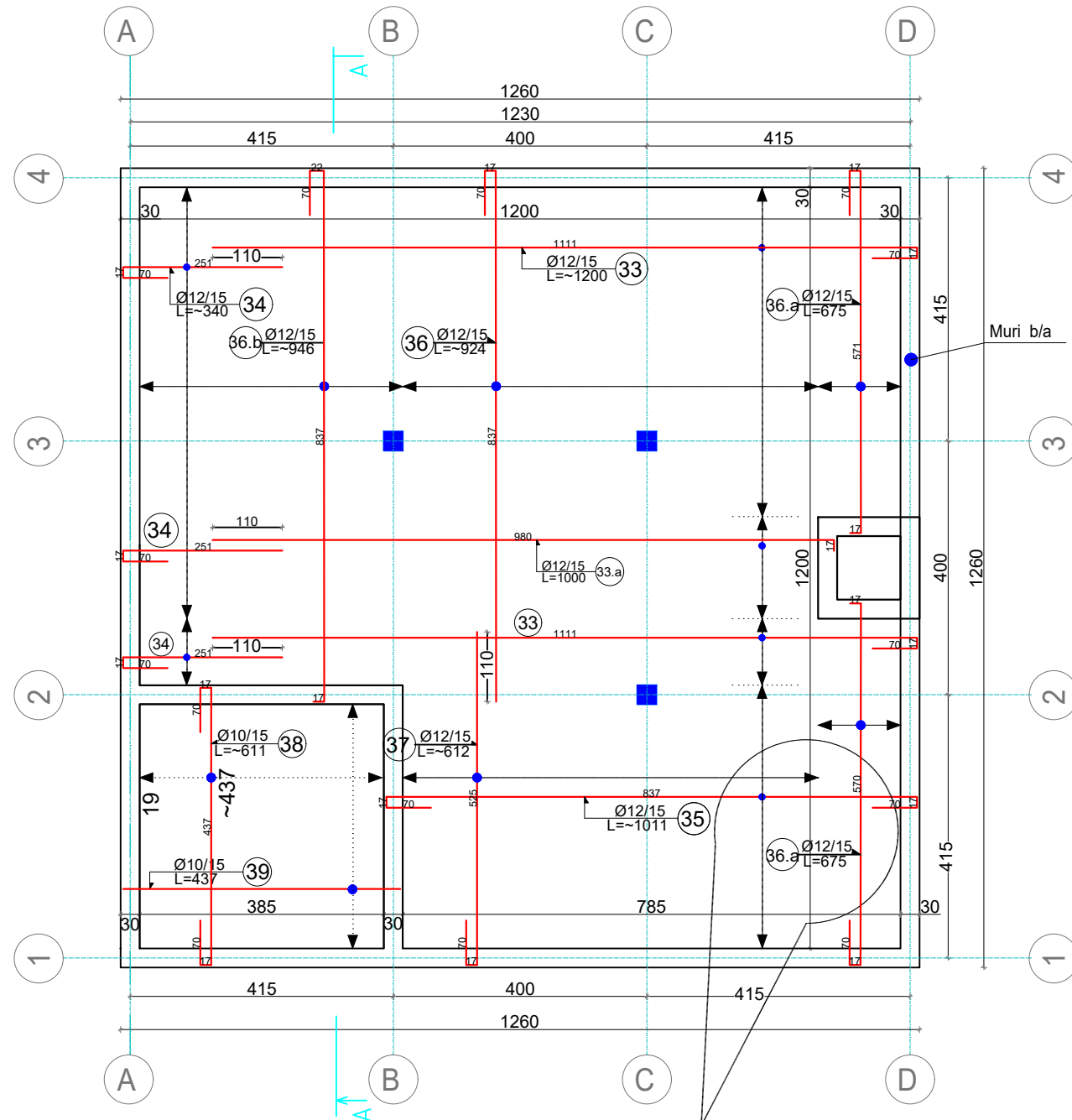


## LEGJENDE:

$\uparrow$	1	→	Numeri i shufrave
$\uparrow$	Ø12	→	Diametri i shufrave ne mm
$\uparrow$	/15	→	Distanca midis shufrave ne cm
$\uparrow$	L~1200	→	Gjatesia e shufrave ne cm
$\uparrow$	st.Ø8/15	→	L~130
$\uparrow$	28.1	→	
$\uparrow$	++	→	Stafa

INVESTITORI:	 Bashkia Malesia e Madhe
PROJEKTUES:	 InfraKonsult
Faza:Projekt-Zbatim	
OBJEKTI: "NDERTIM I UJESJELLESIT TE BAJZES DHE FSHATRAVE PERRETH", LOTI II	
<b>Muret, Prerja Aksi A-A</b> <b>(V Rezevuarit=500m3)</b>	
DREJTOR PROJEKTI: Ing. Sulejman Shemsiu	
PROJEKTUES:	Ing. Redi STRUGA Ing. Olsi BARKO Ing. Sokol METOJA Ing. Fatmir BEXHDILI Ing. Kejvin PASHOLLARI Ing. Orgest MERTIKA Ing. Renato LLOZHI
SHKALLA: 1: 50	Data: Gusht, 2024
Vizatimi Nr: E/a.25	

# ARMIMI I SOLETES, ZGARA E SIPERME SH 1:100



DETAJI I SHPERNDARJES SE GANXHAVE LIDHESE  
NE SOLETE SH 1:50

**LEJGENDE:**

- Muri b/a
- Pozicioni i murit te betonit
- Pozicioni i kollones, b=30x30cm
- (A) Axi ne djetimin y-y
- (1) Axi ne drejtimin x-x

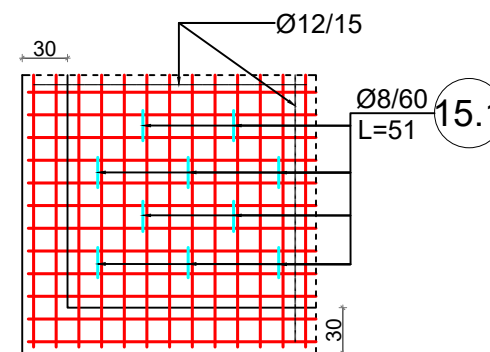
**Note:** Dimensionet jepen ne cm

$\uparrow$ Ø12/15 (1) L=1200	(1)	Numeri i shufrave
	Ø12	Diametri i shufrave ne mm
	/15	Distanca midis shufrave ne cm
	L=1200	Gjatesia e shufrave ne cm

**Shenim:**

1. Betoni per platene, soleten muret dhe kollonat duhet te jete i tipit C25/30
2. Hekur i tipit FeB 44
3. Betoni per shtresen e varfer dhe pjerrtesite duhet te jete i tipit C15
5. Waterstopi duhet te jete i klases 2M ose PE
6. Betoni do te hidhet sipas fazave A,B,C.
7. Pjerrtesia e platase se dyshemeses duhet 0.5%
8. Shtresa mbrojtese per platene dhe per muret duhet te jete t=4cm.
9. Shtresa mbrojtese per kollonen dhe soleten duhet te jete t=3cm
10. Dimensionet jane dhene ne [ cm ]

$\begin{matrix} 20 \\ 19 \\ 12 \end{matrix}$   
 ganxha lidhese ndermjet zgares se poshteme & te sipërme



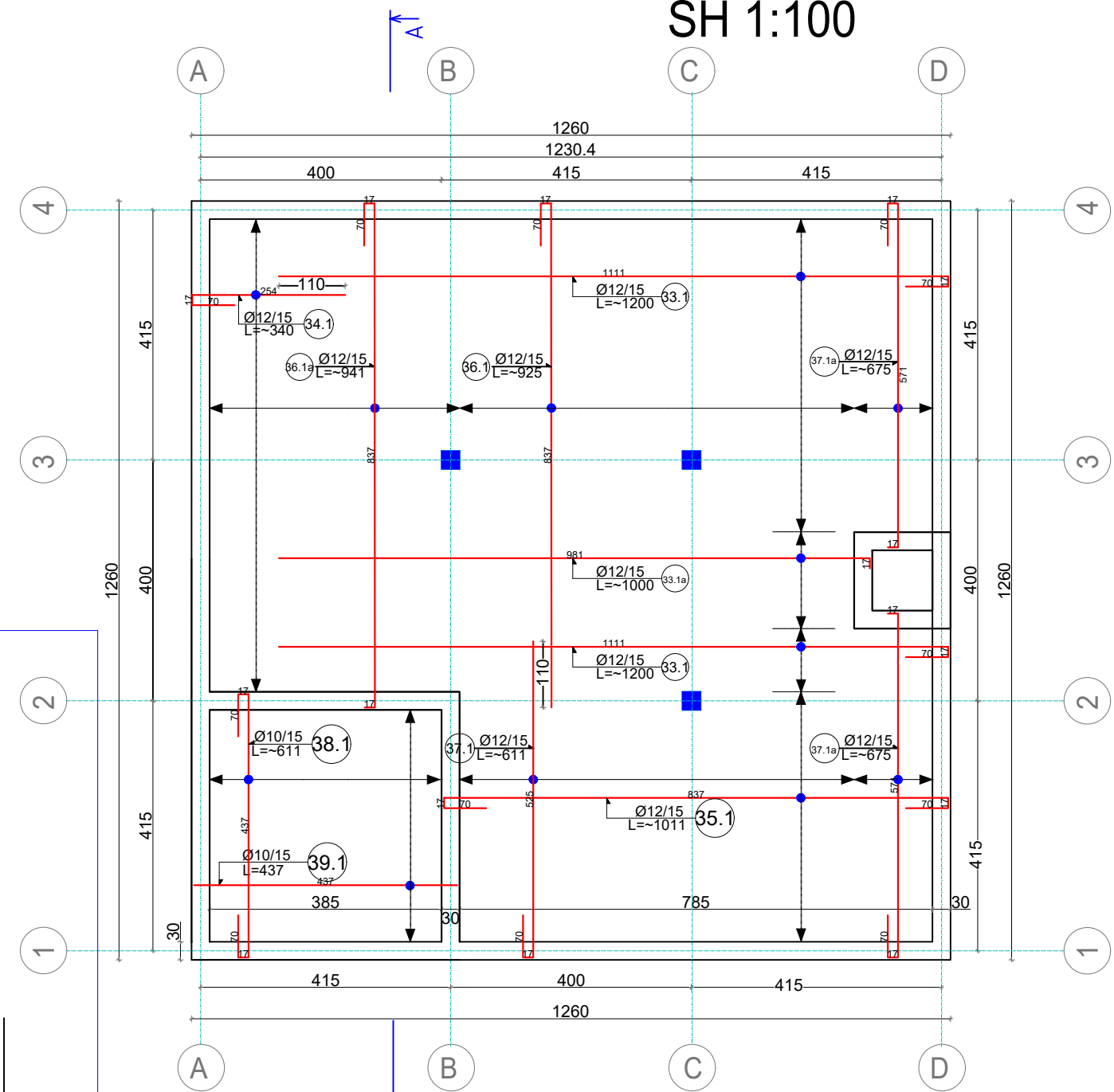
INVESTITORE:	<b>Bashkia Malesia e Madhe</b>
PROJEKTUES:	<b>InfraKonsult</b>
Faza:Projekt-Zbatim	
<b>OBJEKTI: "NDERTIM I UJESJELLESIT TE BAJZES DHE FSHATRAVE PERRETH", LOTI II</b>	
<b>Armimi i Soletes, Zgara e Siperme (V Rezevuarit=500m3)</b>	
DREJTOR PROJEKTI: Ing. Sulejman Shemsiu	
PROJEKTUES:	Ing. Redi STRUGA Ing. Olsi BARKO Ing. Sokol METOJA Ing. Fatmir BEXHDILI Ing. Kejvin PASHOLLARI Ing. Orgest MERTIKA Ing. Renato LLOZHI
SHKALLA: 1: 100	Data: Gusht, 2024 Vizatimi Nr: E/a.26

# ARMIMI I SOLETES, ZGARA E POSHTME

SH 1:100

## ARMIMI I SOLETES ZGARA E POSHTEME SH 1:100

## ARMIMI I CARJES Sh 1:50



**LEGENDE:**

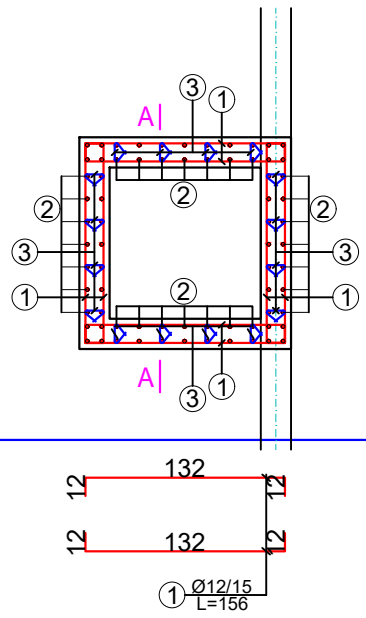
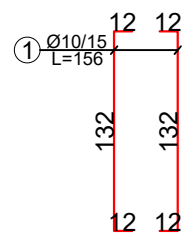
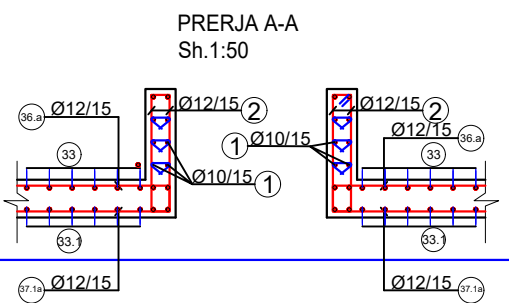
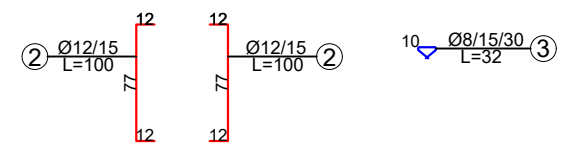
- Muri bla Pozicioni i murit te betonit
- Pozicioni i kolones, b=30x30cm
- (A) Axi ne drejtimin y-y
- (1) Axi ne drejtimin x-x

Note: Dimensionet jepen ne cm

Ø12/15 L=-1200 (1)	Ø12	Numeri shpreh
	Ø12	Diametri shpreh ne mm
	15	Dhena mbrapese shpreh ne cm
	L=-1200	Qilesia shpreh ne cm

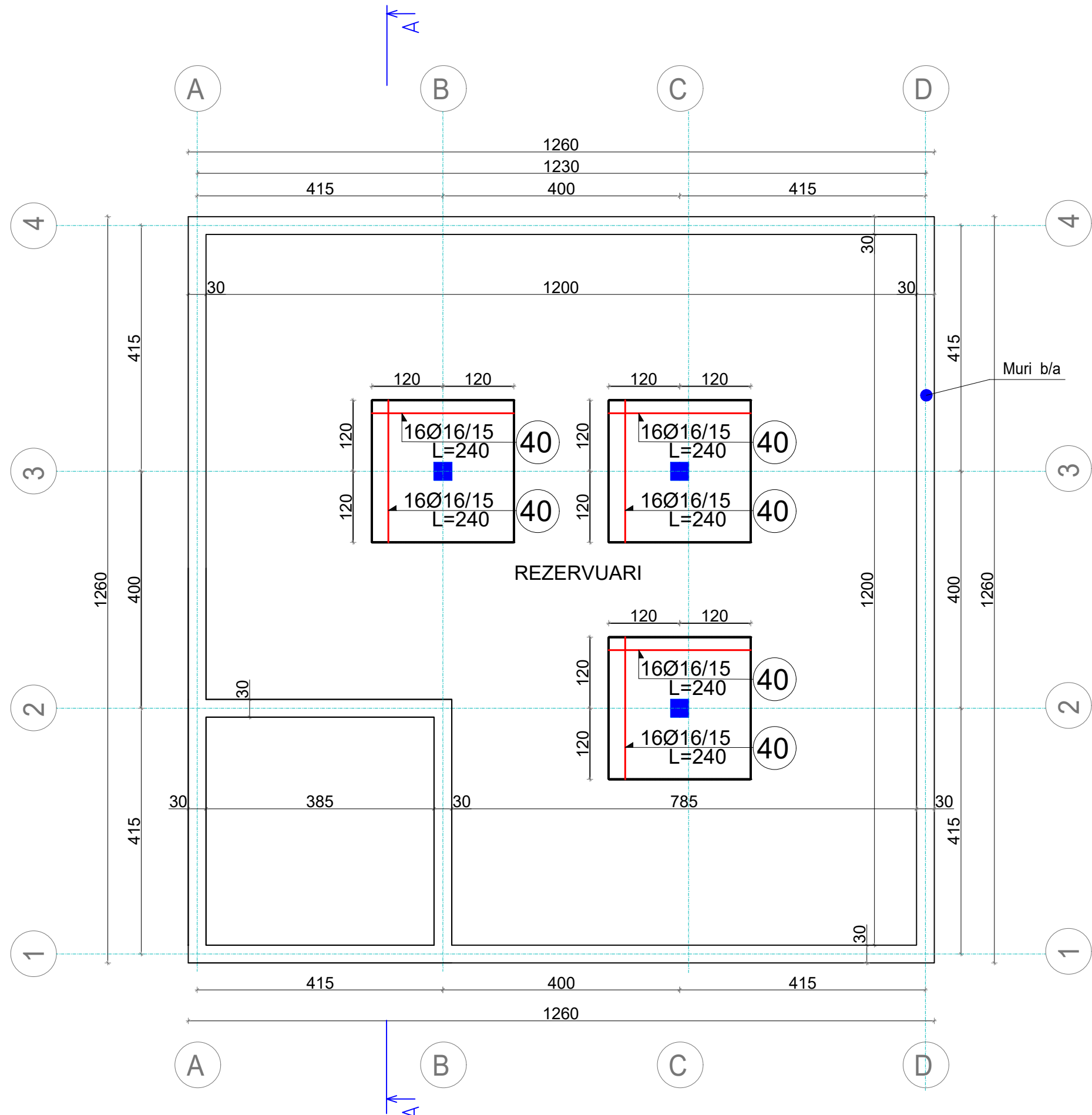
**Shenim:**

1. Betoni per plateste, soleten muret dhe kolonat duhet te jete i tipit C20/25
2. Hekur i tipit FeB 44
3. Betoni per shtresen e varfer dhe pierreshte duhet te jete i tipit C15
5. Waterstopi duhet te jete i klases 2M ose PE
6. Betoni do te hidhet sipas fazave A,B,C.
7. Pierresia e plateste se dyshemese duhet 0.5%
8. Shtresa mbrapese per plateste dhe per muret duhet te jete t=4cm.
9. Shtresa mbrapese per kolonen dhe soleten duhet te jete t=3cm
10. Dimensionet jane dhene ne [ cm ]



INVESTITORI:		Bashkia Malësia e Madhe
PROJEKTUES:		InfraKonsult
Faza:Projekt-Zbatim		
OBJEKTI: "NDERTIM I UJESJELLESIT TE BAJZES DHE FSHATRAVE PERRETH", LOTI II		
<b>Armimi i Soletes, Zgara e Poshtme(V Rezevuarit=500m3)</b>		
DREJTOR PROJEKTI:	Ing. Sulejman Shemsiu	
PROJEKTUES:	Ing. Redi STRUGA Ing. Olsi BARKO Ing. Sokol METOJA Ing. Fatmir BEXHDILI Ing. Kejvin PASHOLLARI Ing. Orgest MERTIKA Ing. Renato LLOZHI	
SHKALLA: 1: 100	Data: Gusht, 2024	
	Vizatimi Nr: E/a.27	

# ARMIMI SHITESE I SOLETES, ZGARA E SIPERME SH 1:75



**LEGJENDE:**

- Muri b/a Pozicioni i murit te betonit
- Pozicioni i kollones, b=30x30cm
- (A)** Axi ne drejtimin y-y
- (1)** Axi ne drejtimin x-x

Note: Dimensionet jepen ne cm

①	→	Numri i shufrave
Ø12	→	Diametri i shufrave ne mm
/15	→	Distanca mires shufrave ne cm
L=1200	→	Gjatësia e shufrave ne cm

**Shenim:**

1. Betoni per platene , soleten muret dhe kollonat duhet te jete i tipit C25/30
2. Hekur i tipit FeB 44
3. Betoni per shtresen e varfer dhe pjerresite duhet te jete i tipit C15
5. Waterstopi duhet te jete i klases 2M ose PE
6. Betoni do te hidhet sipas fazave A,B,C.
7. Pjerresia e platесе se dyshemese duhet 0.5%
8. Shtresa mbrojtese per platene dhe per muret duhet te jete t=4cm.
9. Shtresa mbrojtese per kollonen dhe soleten duhet te jete t=3cm
10. Dimensionet jane dhene ne [ cm ]

INVESTITORI:	<b>Bashkia Malesia e Madhe</b>
PROJEKTUES:	<b>InfraKonsult</b>
Faza:Projekt-Zbatim	
<b>OBJEKTI: "NDERTIM I UJESJELLESIT TE BAJZES DHE FSHATRAVE PERRETH", LOTI II</b>	
<b>Armimi i Shtese i Soletes, Zgara e Siperme(V Rezevuarit=500m3)</b>	
DREJTOR PROJEKTI: Ing. Sulejman Shemsiu	
PROJEKTUES:	Ing. Redi STRUGA Ing. Olsi BARKO Ing. Sokol METOJA Ing. Fatmir BEXHDILI Ing. Kejvin PASHOLLARI Ing. Orgest MERTIKA Ing. Renato LLOZHI
SHKALLA: 1: 75	Data: Gusht, 2024 Vizatimi Nr: E/a.28