





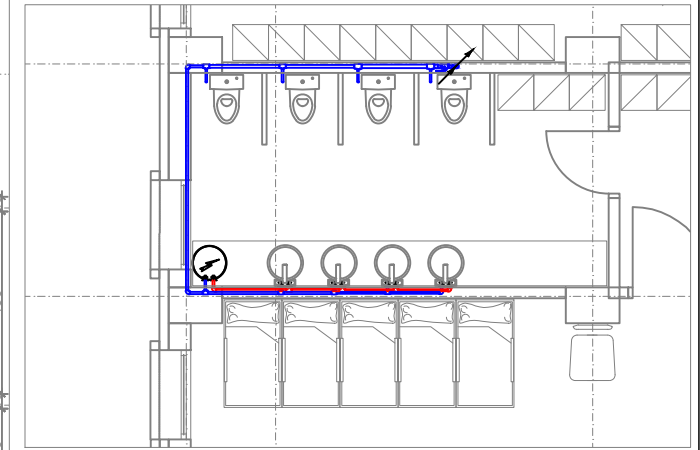


**LEGJENDA:**

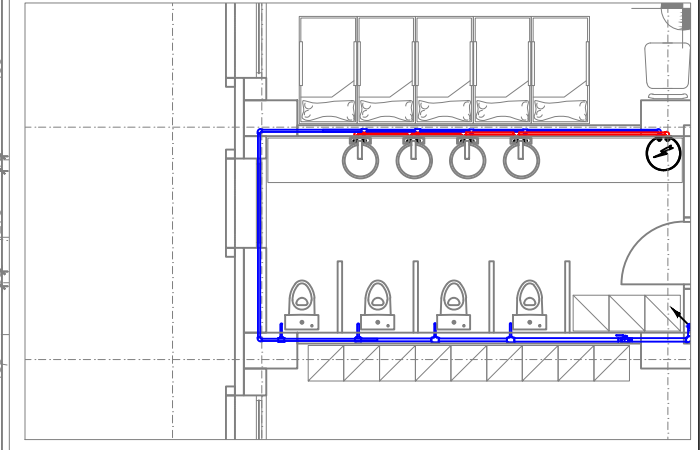
SIMBOLI	PERSHKRIMI
	Tubi i ujit te pishem, uji ftohte
	Tubi ujit te pishem, uji ngrohte
	Kaseta e prurje-matesit
	Valvomblyese
	Boiler uji 10l nen lavaman 2KW
	Boiler uji 80l

**MATERIALET:**  
 - Tuba polyetilen me shtrese alumini PE-Xb/AL/PE-Xb sipas EN ISO 21003-1, bashkim me presim  
 - Izolim i tubit me shkume gome K-flex 9mm sipas EN ISO 8497; DIN 52613  
 - Boiler per ngrohjen e ujit 10l; 2KW; 220V sipas EN 55014-1; EN 60335

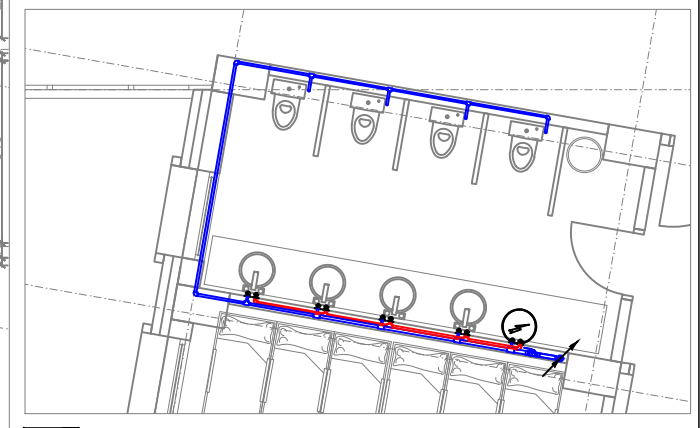
**SHENIME:**  
 - Te gjitha materialet per instalimet e ujit te pishem jane pex/al/pexme, bashkime me presim.  
 - Te gjitha tubat jane te izoluar per te shmangur kondensimin  
 - Tubat duhet te fiksohen me unaza te pajisura me gomine kundra zhurmave. Intervalet ndermjet unazave te jene sipas udhezimeve te fabrikes.



**1.1 AMBJENTI SANITAR no. 1**  
SHKALLA: 1:100



**1.2 AMBJENTI SANITAR no. 2**  
SHKALLA: 1:100



**1.3 AMBJENTI SANITAR no. 3**  
SHKALLA: 1:100

**PRONËSIA**  
PR

**BASHKIA TIRANË**

**INVESTITOR**  
PRONËSIA

**BASHKIA TIRANË**

**STUDIO PROJEKTIMI**  
ARCHITECTURE STUDIO

**ASA ARCHITECTS**  
BRINGING SPACE TO LIFE

**MECHANICAL ENGINEER**  
ING. MEKANIK  
Artan DERSHA

**SHËNIME / NOTES**

Rrh. Nr.	Rishikim	Punoi:	Kontrollor:	Mirator:	Data:
00					00

**PLAN REFERENCË / KEY PLAN**

Projekti / Project: 24AL-KC

**KOPËSHIT-CERDHE E INTEGRUAR**  
Rr. " Muharrem Caushi", n.j str KA/208

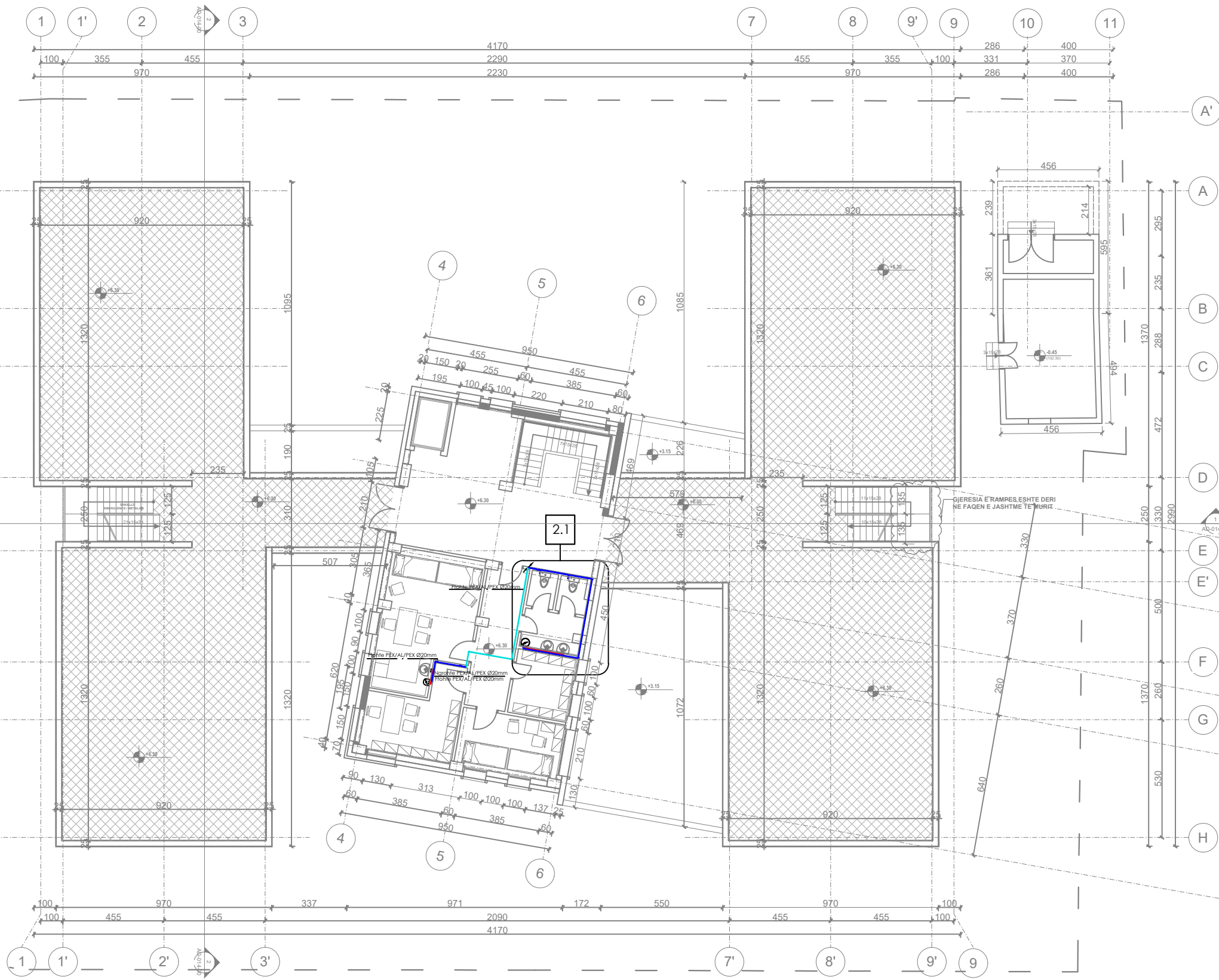
Faza / Phase: **PROJEKT ZBATIMI / IMPLEMENTATION PROJECT**

Disiplina Teknike kryesore / Primary Technical Discipline: **ME**  
**HYDROSANITARY / HIDROSANITARE**

Nr. dhe Titulli i Fletës / Page No. and Title: **HS - 03**

**FURNIZIMI ME UJE SANITAR**  
**KATI I PARE - AMBJ. SANITARE 1 - 3**

Rishikim Nr. / Revision No.: 00  
Spec.: Shk. / Sc.: 1:200

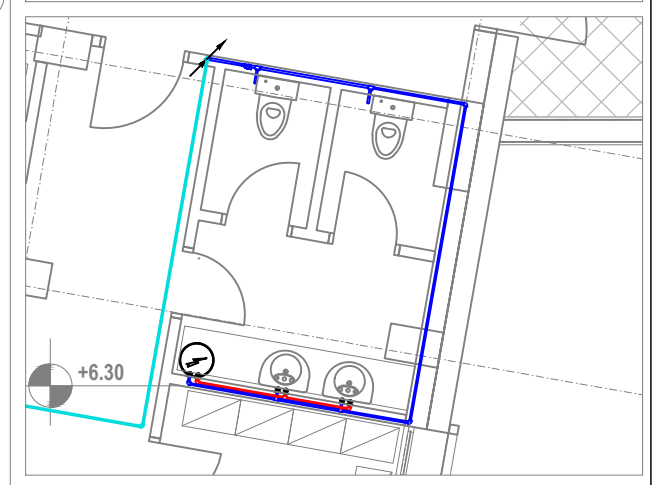


**LEGJENDA:**

SIMBOLI	PERSHKRIMI
	Tubi i ujit te pishem, uji ftohte
	Tubi i ujit te pishem, uji ngrohte
	Kaseta e prurje-matesit
	Valvomblyese
	Boiler uji 10l nen lavaman 2kW
	Boiler uji 80l

**MATERIALET:**  
 - Tuba polyetilen me shtrese alumini PE-Xb/AL/PE-Xb sipas EN ISO 21003-1, bashkim me presim  
 - Izolim i tubit me shkume gome K-flex 9mm sipas EN ISO 8497; DIN 52613  
 - Boiler per ngrohjen e ujit 10l; 2kW; 220V sipas EN 55014-1; EN 60335

**SHENIME:**  
 - Te gjitha materialet per instalimet e ujit te pishem jane pex/al/pexme, bashkime me presim.  
 - Te gjitha tubat jane te izoluar per te shmangur kondesimin  
 - Tubat duhet te fiksohen me unaza te pajisura me gomine kundra zhurmave. Intervalet ndermjet unazave te jene sipas udhezimeve te fabrikes.



**2.1** AMBJENTI SANITAR no. 1  
 SHKALLA: 1:100

**PRONËSIA**  
PR

**BASHKIA TIRANË**

**INVESTITOR**  
PRONËSIA

**BASHKIA TIRANË**

**STUDIO PROJEKTIMI**  
ARCHITECTURE STUDIO

**ASA** AS.ARCHITECTS  
BRINGING SPACE TO LIFE

**MECHANICAL ENGINEER**  
ING. MEKANIK  
Artan DERSHA

**SHËNIME / NOTES**

00	01	02	03	04	05
00	01	02	03	04	05

**PLAN REFERENCË / KEY PLAN**

Projekti / Project: 24AL-KC

**KOPËSHT-CERDHE E INTEGRUAR**  
 Rr. " Muharrem Caushi", n.j str KA/208

Faza / Phase: **PROJEKT ZBATIM/ IMPLEMENTATION PROJECT**

Disiplina Teknike kryesore / Primary Technical Discipline: **ME**  
**HYDROSANITARY / HIDROSANITARE**

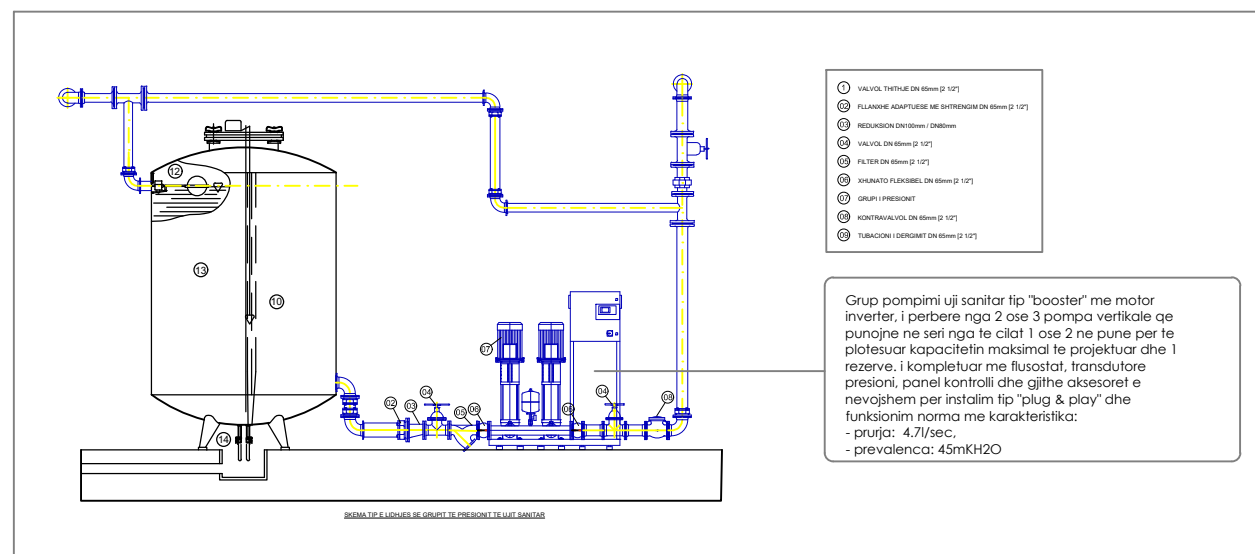
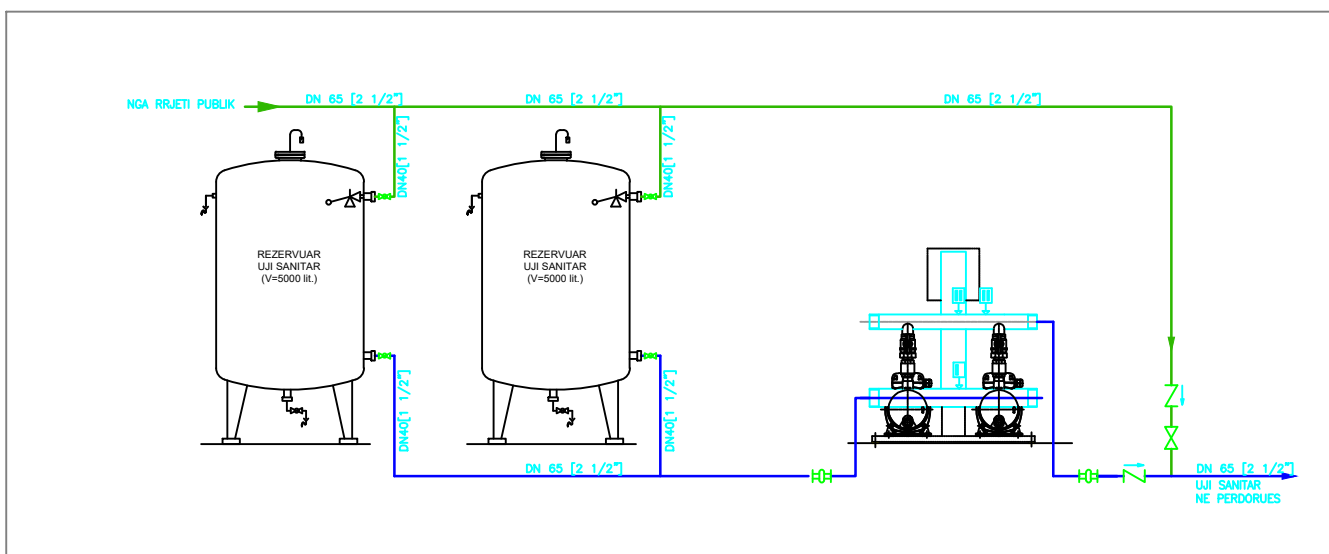
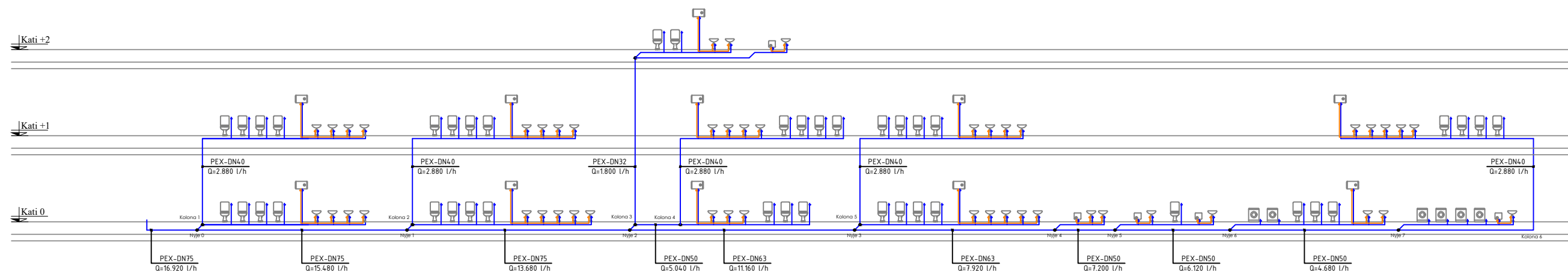
Nr. dhe Titulli i Fletës / Page No. and Title: **HS - 05**

**FURNIZIMI ME UJE SANITAR**  
**KATI DYTE**

Rishikim Nr. / Revision No.: 00  
 Spec.: Shk. / Sc.: 1:200



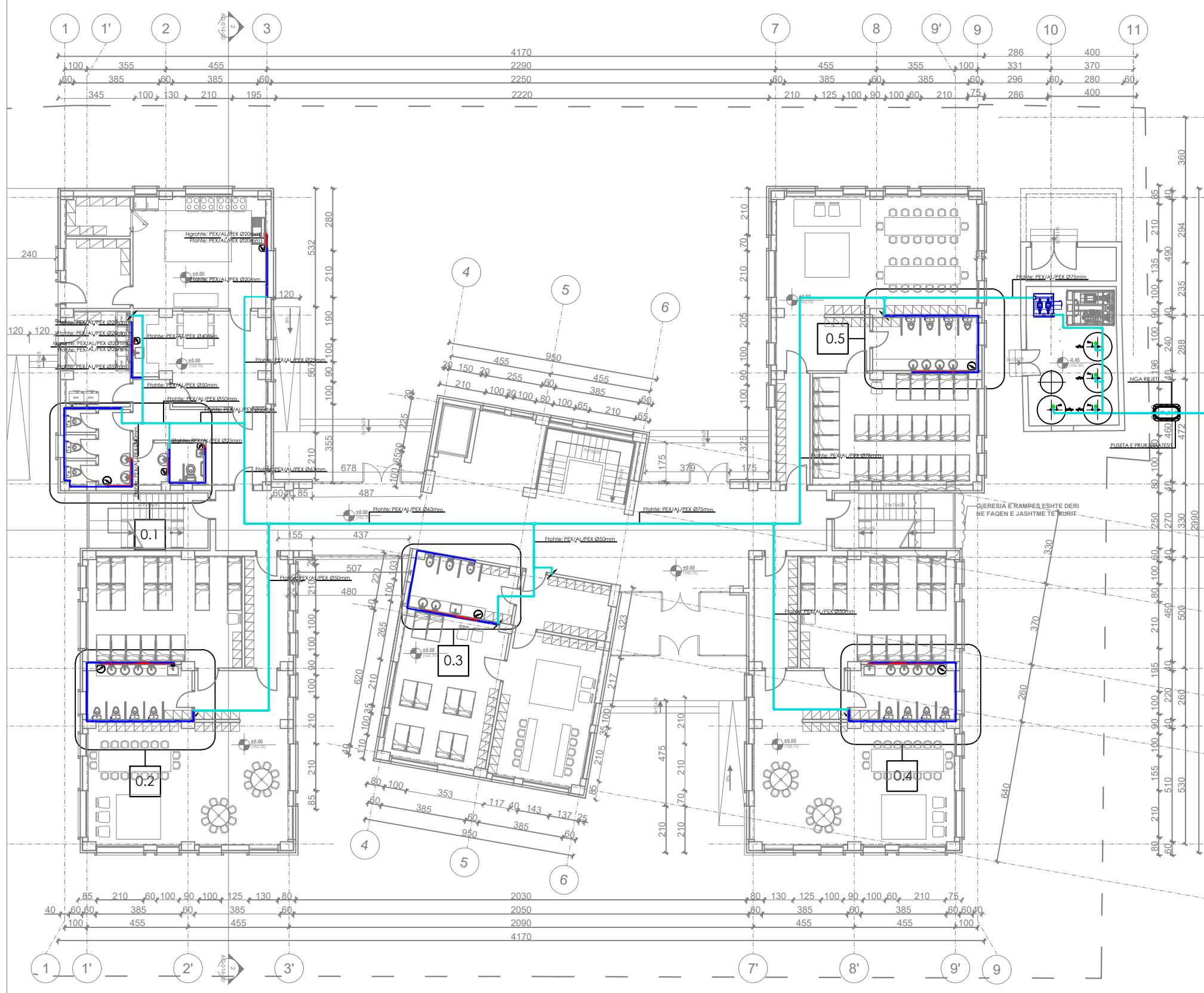
UJI SANITAR - AMBIJENTET TREGATARE - KUOTA +0.00					
	PRURJA TOTALE	PRURJA E PROJEKTTIT	SHPEJTESIA MAX.	DIAMETRI I LLOGARITUR	DN
	Qa (l/s)	Qa (l/s)	(m/s)	(mm)	(mm)
Nyje 7-Nyje 6	1.30	1.30	1.2	37.1	50
Nyje 6-Nyje 5	1.80	1.70	1.5	38.0	50
Nyje 5-Nyje 4	2.10	2.00	1.5	41.2	50
Nyje 4-Nyje 3	2.50	2.20	1.5	43.2	63
Nyje 3-Nyje 2	4.20	3.10	1.5	51.3	63
Nyje 2-Nyje 1	6.10	3.80	1.5	56.8	75
Nyje 1-Nyje 0	7.80	4.30	1.5	60.4	75
Nyje 0-Pompe	9.40	4.70	1.5	63.2	75



00	SHISEP	APL/MLD	AS	Mars
Rsh. Nr.	Rishkrim	Punoi:	Kontroll:	Mirato:
Rev. No.	Revision	Drawn by:	Checked by:	Approved by:

PLAN REFERENCË / KEY PLAN





**LEGJENDA:**

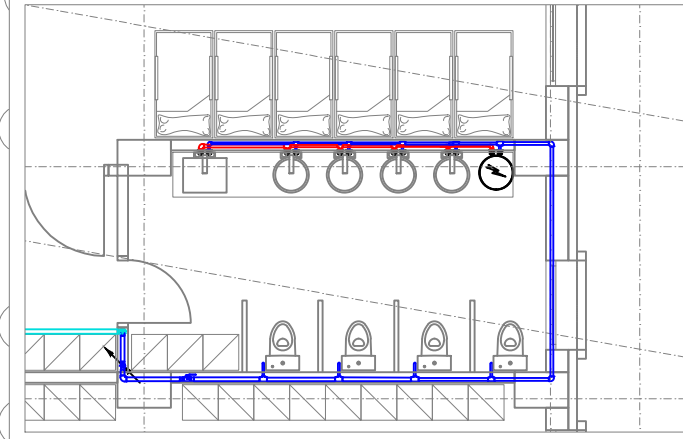
SIMBOLI	PERSHKRIMI
	Tubi i ujit te pishem, uji ftohte
	Tubi i ujit te pishem, uji ngrohte
	Kaseta e prurje-matesit
	Valvombylesë
	Boiler uji 10l nen lavaman 2kW
	Boiler uji 80l

**MATERIALET:**

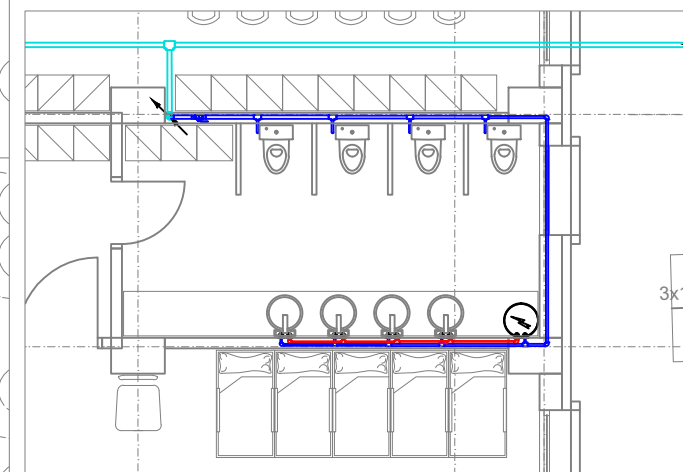
- Tuba polyetilen me shtrese alumini PE-Xb/AL/PE-Xb sipas EN ISO 21003-1, bashkim me presim
- Izolim i tubit me shkume gome K-flex 9mm sipas EN ISO 8497; DIN 52613
- Boiler per ngrohjen e ujit 10l; 2kW; 220V sipas EN 55014-1; EN 60335

**SHENIME:**

- Te gjitha materialet per instalimet e ujit te pishem jane pex/al/pex/me, bashkime me presim.
- Te gjitha tubat jane te izoluar per te shmangur kondensimin
- Tubat duhet te fiksohen me unaza te pajisura me gomine kundra zhurmave. Intervalet ndermjet unazave te jene sipas udhezimeve te fabrikes.



**0.4 AMBJENTI SANITAR no. 4**  
SHKALLA: 1:100



**0.5 AMBJENTI SANITAR no. 5**  
SHKALLA: 1:100

**PRONËSIA**  
PR

**BASHKIA TIRANË**

**INVESTITOR**  
PRONËSIA

**BASHKIA TIRANË**

**STUDIO PROJEKTIMI**  
ARCHITECTURE STUDIO

**ASA** ASARCHITECTS  
BRINGING SPACE TO LIFE

**MECHANICAL ENGINEER**  
ING. MEKANIK  
Artan DERSHA

**SHËNIME / NOTES**

00

Rrh. Nr.	Rishikim	Punoi:	Kontrollor:	Mirator:	Data:
Rev. No.	Revision	Drawn by:	Checked by:	Approved by:	Date:

**PLAN REFERENCË / KEY PLAN**

Projekti / Project: 24L-KC

**KOPËSHIT-CERDHE E INTEGRUAR**  
Rr. " Muharrem Caushi", n.j str KA/208

Faza / Phase: **PROJEKT ZBATIMI / IMPLEMENTATION PROJECT**

Disiplina Teknike kryesore / Primary Technical Discipline: **ME**  
**HYDROSANITARI / HIDROSANITARE**

Nr. dhe Titulli i Fletës / Page No. and Title: **HS - 02**

**FURNIZIMI ME UJE SANITAR**  
**KATI PERDHE - AMBJ. SANITARE 4 - 5**

Rishikim Nr. / Revision No.: 00  
Spec.: Shk. / Sc.: 1:200



**LEGJENDA:**

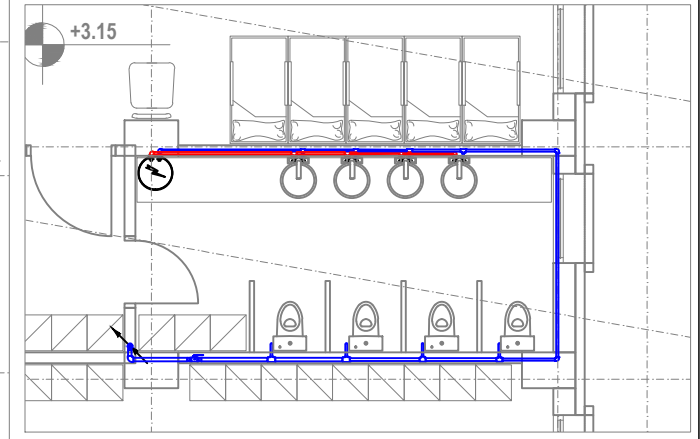
SIMBOLI	PERSHKRIMI
	Tubi i ujit te pishem, uji ftohte
	Tubi ujit te pishem, uji ngrohte
	Kaseta e prurje-matesit
	Valvombyltese
	Boiler uji 10l nen lavaman 2KW
	Boiler uji 80l

**MATERIALET:**

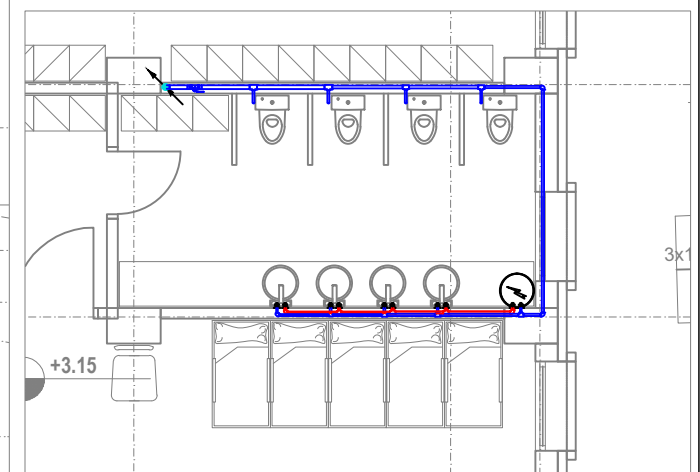
- Tuba polyetilen me shtrese alumini PE-Xb/AL/PE-Xb sipas EN ISO 21003-1, bashkim me presim
- Izolim i tubit me shkume gome K-flex 9mm sipas EN ISO 8497; DIN 52613
- Boiler per ngrohjen e ujit 10l; 2KW; 220V sipas EN 55014-1; EN 60335

**SHENIME:**

- Te gjitha materialet per instalimet e ujit te pishem jane pex/al/pexme, bashkime me presim.
- Te gjitha tubat jane te izoluar per te shmangur kondesimin
- Tubat duhet te fiksohen me unaza te pajisura me gomine kundra zhurmave. Intervalet ndermjet unazave te jene sipas udhezimeve te fabrikes.



**1.4 AMBJENTI SANITAR no. 4**  
SHKALLA: 1:100



**1.5 AMBJENTI SANITAR no. 5**  
SHKALLA: 1:100

**PRONËSIA**  
PR

**BASHKIA TIRANË**

**INVESTITOR**  
PRONËSIA

**BASHKIA TIRANË**

**STUDIO PROJEKTIMI**  
ARCHITECTURE STUDIO

**ASA ARCHITECTS**  
BRINGING SPACE TO LIFE

**MECHANICAL ENGINEER**  
ING. MEKANIK  
Artan DERSHA

**SHËNIME / NOTES**

Rrh. Nr.	Rishikim	Punoi:	Kontroll:	Mirato:	Data:
00					

**PLAN REFERENCË / KEY PLAN**

Projekti / Project: 24AL-KC

**KOPËSHIT-CERDHE E INTEGRUAR**  
Rr. " Muharrem Caushi", n.j str KA/208

Faza / Phase: **PROJEKT ZBATIM/ IMPLEMENTATION PROJECT**

Disiplina Teknike kryesore / Primary Technical Discipline: **ME**

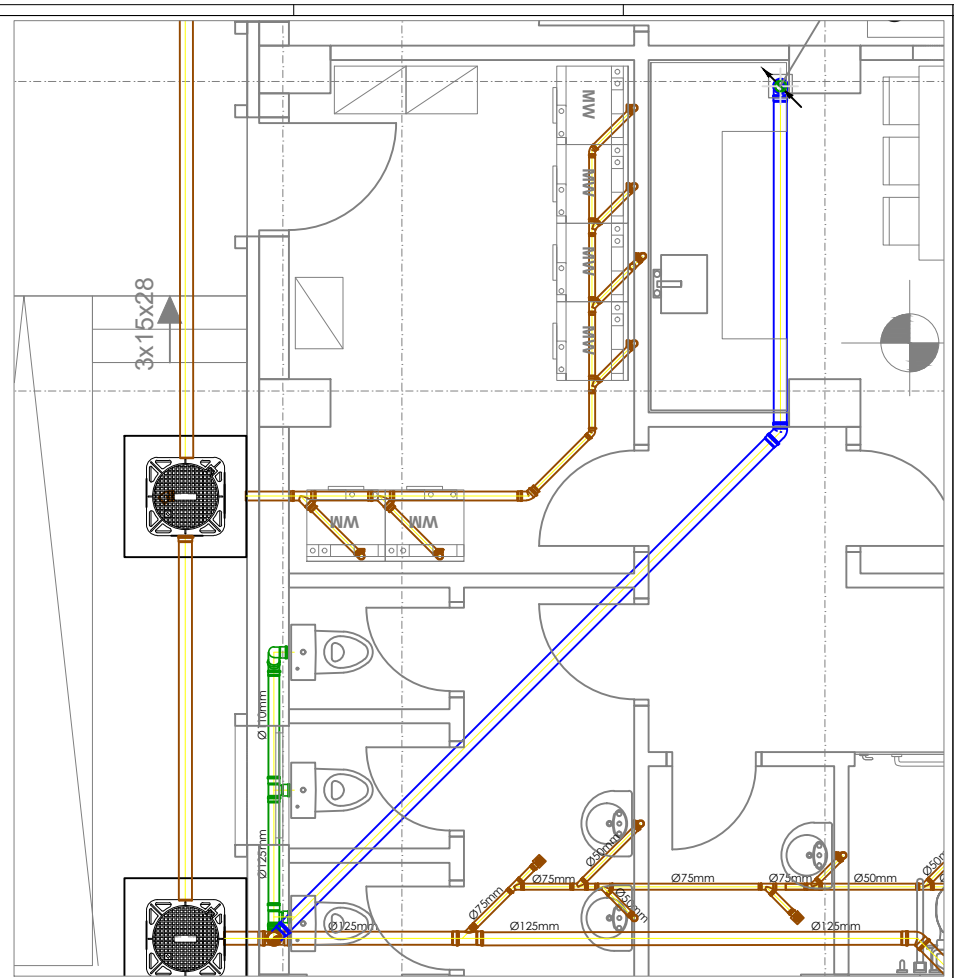
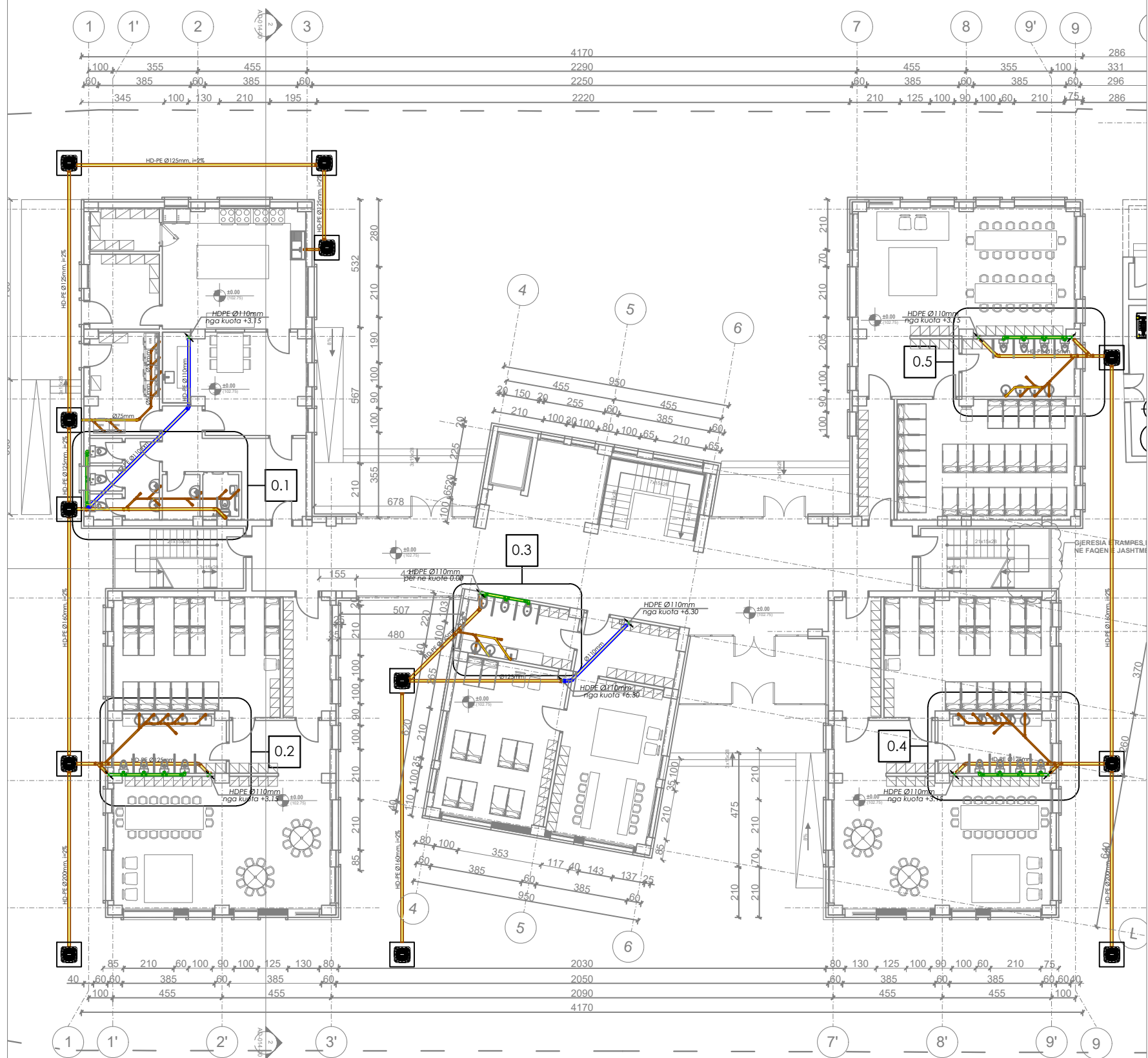
**HYDROSANITARY / HIDROSANITARE**

Nr. dhe Titulli i Fletës / Page No. and Title: **HS - 04**

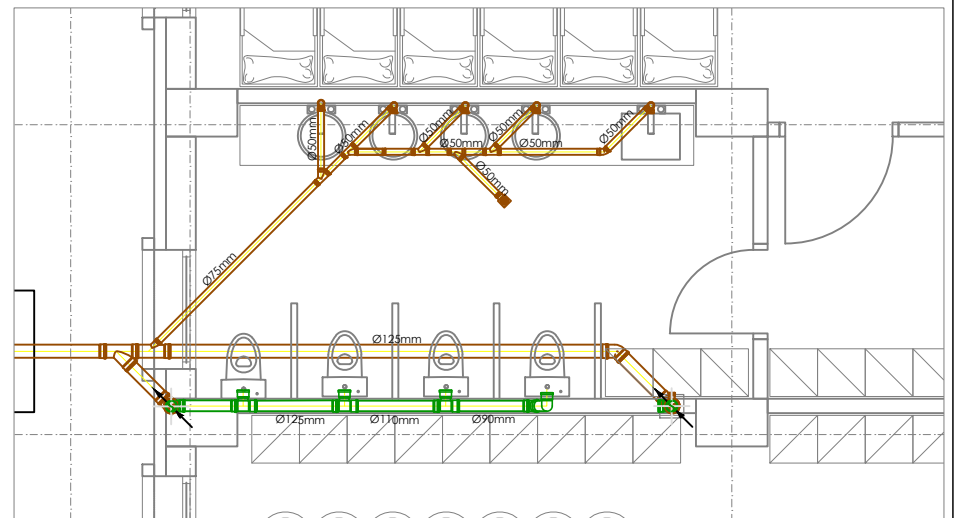
**FURNIZIMI ME UJE SANITAR**  
**KATI I PARE - AMBJ. SANITARE 4 - 5**

Rishikim Nr. / Revision No.: 00

Spec.: Shk. / Sc.: 1:200



0.1 AMBJENTI SANITAR no. 1  
SHKALLA: 1:100



0.2 AMBJENTI SANITAR no. 2  
SHKALLA: 1:100

**LEGJENDA:**

SIMBOLI	PERSHKRIMI
	Tubi shkarkimeve ne mur
	Tubi i shkarkimeve ne dysheme
	Kollona e ventilimit te shkarkimeve

**MATERIALET:**

- Tub (polypropylene) dhe rakorderite sipas EN1451-1, SN4;

**SHENIME:**

- Brylta 90° nuk do te perdoren, shumica e rakorderive do te jene 45°, brylat dhe TI.
- Te gjitha instalimet e ujrave te zeza do te jene tuba PP
- Te gjitha penetrimet e mureve te jashtme dhe pllakes do te jene te hidroizoluara dhe me membrane.
- Kolona e shkarkimit del ne tarace per ventilim

PRONËSIA  
PR

**BASHKIA TIRANË**

INVESTITOR  
PRONËSIA

**BASHKIA TIRANË**

STUDIO PROJEKTIMI  
ARCHITECTURE STUDIO

**ASA ARCHITECTS**  
BRINGING SPACE TO LIFE

MECHANICAL ENGINEER  
ING. MEKANIK  
Artan DERSHA

**SHËNIME / NOTES**

Rev. No.	Rishikim	Punoi:	Kontrollor:	Mirator:	Data:
00					

**PLAN REFERENCË / KEY PLAN**

Projekti / Project: 24AL-KC

**KOPËSHËT-CERDHE E INTEGRUAR**

Rr. " Muharrem Caushi", n.j str KA/208

Faza / Phase: PROJEKT ZBATIM/ IMPLEMENTATION PROJECT

Disiplina Teknike kryesore / Primary Technical Discipline: ME

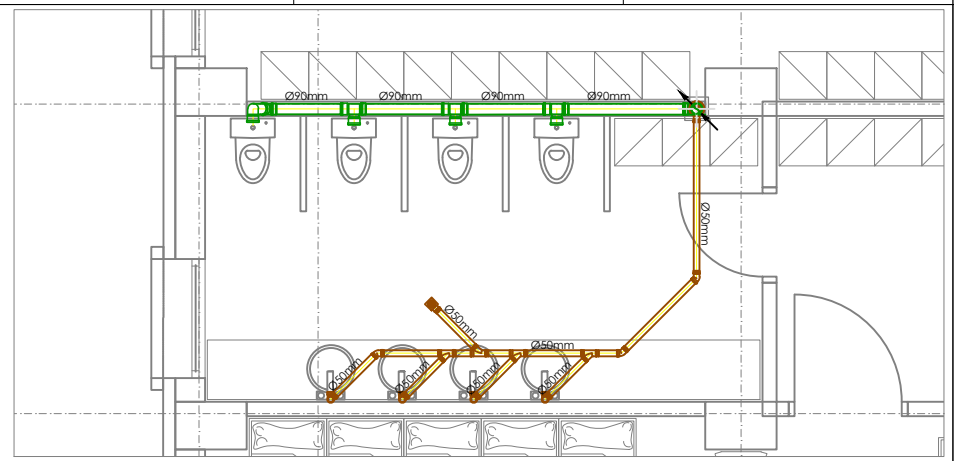
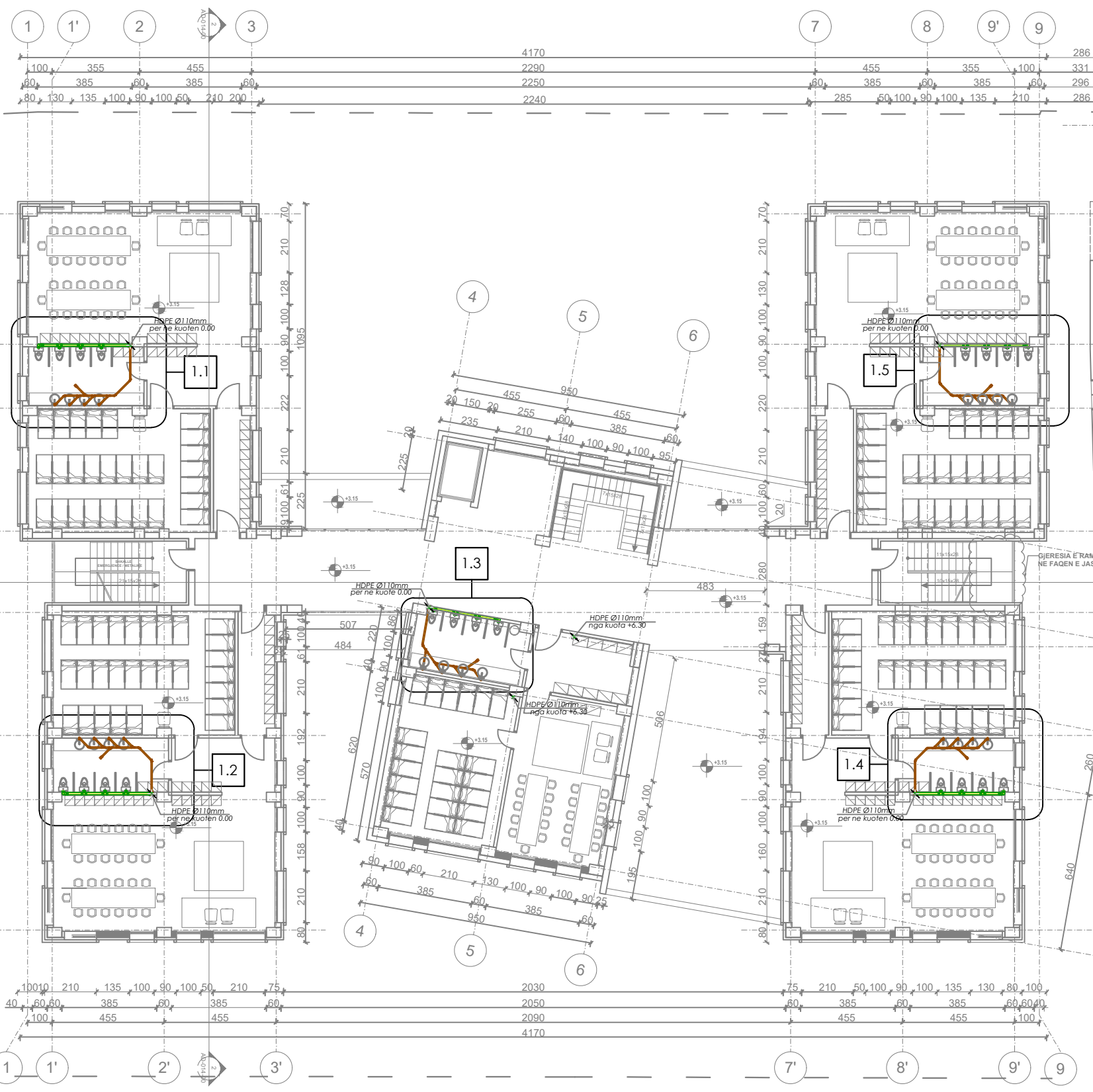
Hydrosanitare / Hydrosanitare: HS-07

Nr. dhe Titulli i Fletës / Page No. and Title: MBLEDHJA/LARGIMI I UJRAVE TE NDOTURA - KATI PERDHE

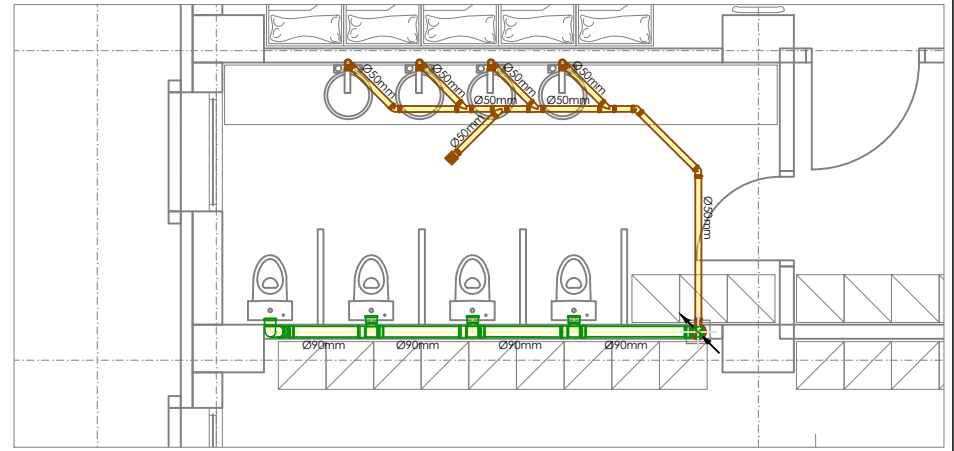
Rishikim Nr. / Revision No.: 00

Shk. / Sc.: 1:200

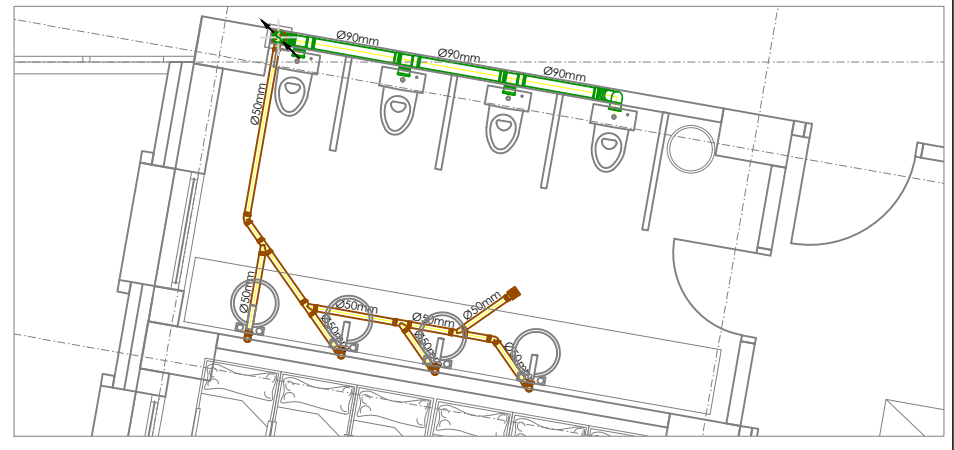




1.1 AMBJENTI SANITAR no. 1  
SHKALLA: 1:100



1.2 AMBJENTI SANITAR no. 2  
SHKALLA: 1:100



1.3 AMBJENTI SANITAR no. 3  
SHKALLA: 1:100

**LEGJENDA:**

SIMBOLI	PERSHKRIMI
	Tubi shkarkimeve ne mur
	Tubi i shkarkimeve ne dysheme
	Kollona e ventilimit te shkarkimeve

**MATERIALET:**

- Tub (polypropylene) dhe rakorderite sipas EN1451-1, SN4;

**SHENIME:**

- Brylla 90° nuk do te perdoren, shumica e rakorderive do te jene 45°, bryllat dhe TI.
- Te gjitha instalimet e ujrave te zeza do te jene tuba PP
- Te gjitha penetrimet e mureve te jashtme dhe pllakes do te jene te hidroizoluara dhe me membrane.
- Kolona e shkarkimit del ne tarace per ventilim

PRONËSIA  
PR

BASHKIA TIRANË

INVESTITOR  
PRONËSIA

BASHKIA TIRANË

STUDIO PROJEKTIMI  
ARCHITECTURE STUDIO

ASA ARCHITECTS  
BRINGING SPACE TO LIFE

MECHANICAL ENGINEER  
ING. MEKANIK  
Artan DERSHA

**SHËNIME / NOTES**

00	01	02	03	04	05
Rishikim	Rishikim	Punoi	Kontrollor	Mirator	Data
Rev. No.	Revision	Drawn by:	Checked by:	Approved by:	Date:

**PLAN REFERENCË / KEY PLAN**



Projekti / Project 24AL-KC

**KOPËSHËT-CERDHE E INTEGRUAR**  
Rr. " Muharrem Caushi", n.j str KA/208

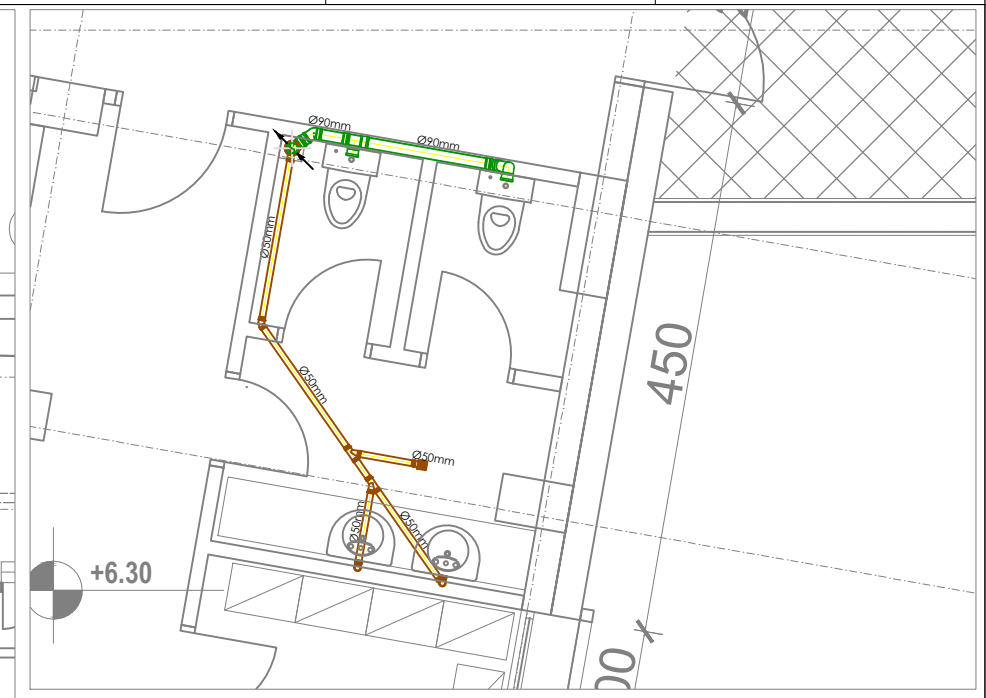
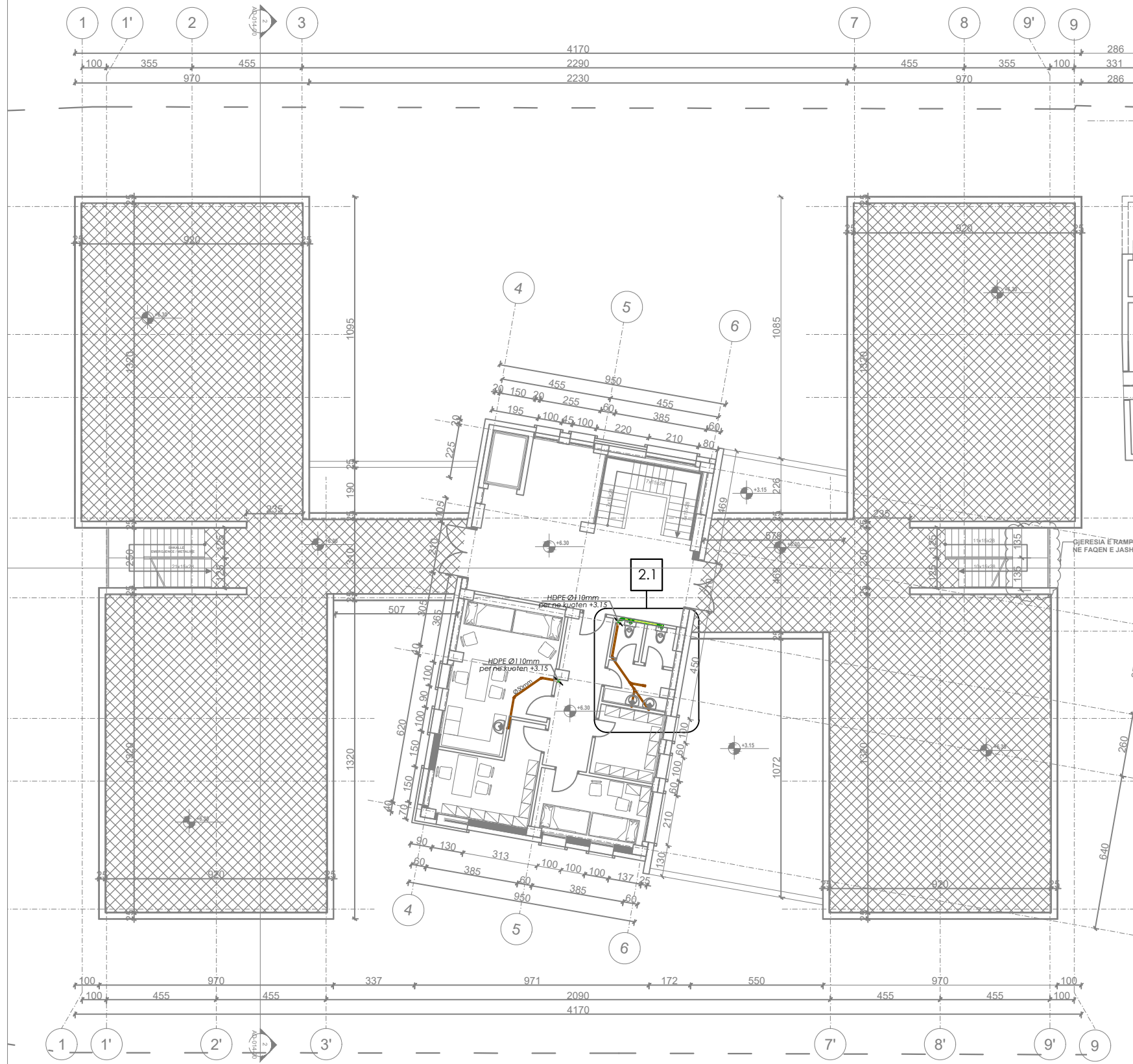
Faza / Phase  
**PROJEKT ZBATIM/ IMPLEMENTATION PROJECT**

Disiplina Teknike kryesore / Primary Technical Discipline  
**ME**  
HYDROSANITARY / HIDROSANITARE

Nr. dhe Titulli i Fletës / Page No. and Title  
HS - 09

**MBLEDHJA/LARGIMI I UJRAVE TE NDOTURA - KATI I PARE**

Rishikim Nr. / Revision No. 00  
Spec.: Shk. / Sc. 1:200



2.1 AMBJENTI SANITAR no. 1  
SHKALLA: 1:100

**LEJENDA:**

SIMBOLI	PERSHKRIMI
	Tubi shkarkimeve ne mur
	Tubi i shkarkimeve ne dysheme
	Kollona e ventiliimit te shkarkimeve

**MATERIALET:**

- Tub (polypropylene) dhe rakorderite sipas EN1451-1, SN4;

**SHENIME:**

- Brylla 90° nuk do te perdoren, shumica e rakorderive do te jene 45°, bryllet dhe Ti.
- Te gjitha instalimet e ujrave te zeza do te jene tuba PP
- Te gjitha penetrimet e mureve te jashtme dhe pllakes do te jene te hidroizoluara dhe me membrane.
- Kolona e shkarkimit del ne tarace per ventiliim

PRONËSIA  
PR

BASHKIA TIRANË

INVESTITOR  
PRONËSIA

BASHKIA TIRANË

STUDIO PROJEKTIMI  
ARCHITECTURE STUDIO

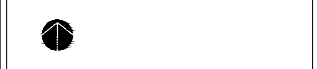
ASA AS ARCHITECTS  
BRINGING SPACE TO LIFE

MECHANICAL ENGINEER  
ING. MEKANIK  
Artan DERSHA

SHËNIME / NOTES

Rev. No.	Rishikim	Punoi	Kontrollor	Mirator	Data
00					

PLAN REFERENCË /  
KEY PLAN



Projekti / Project 24AL-KC

KOPËSHT-CERDHE E INTEGRUAR

Rr. " Muharrem Caushi", n.j str KA/208

Faza / Phase  
PROJEKT ZBATIMI/ IMPLEMENTATION PROJECT

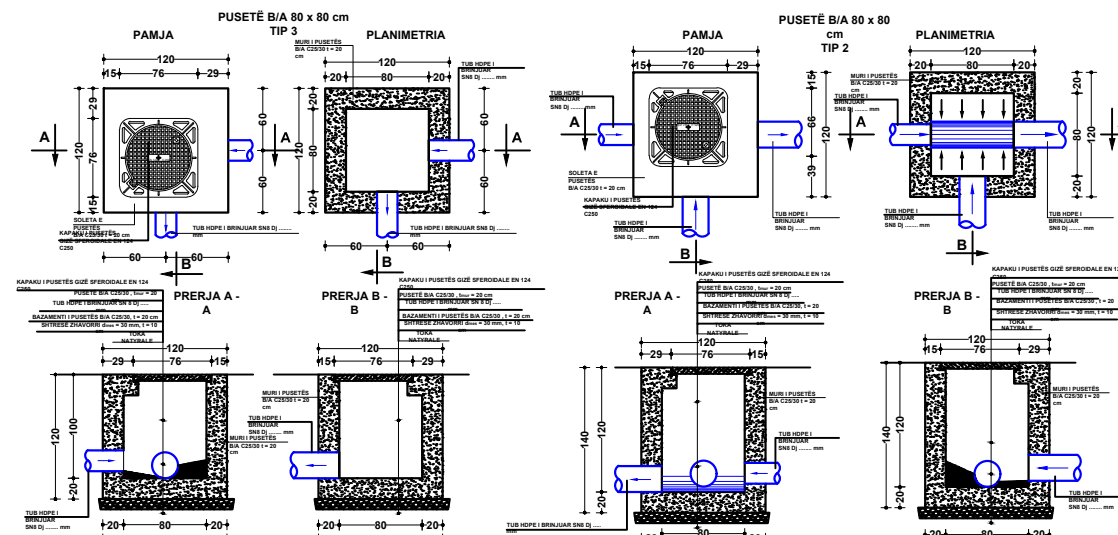
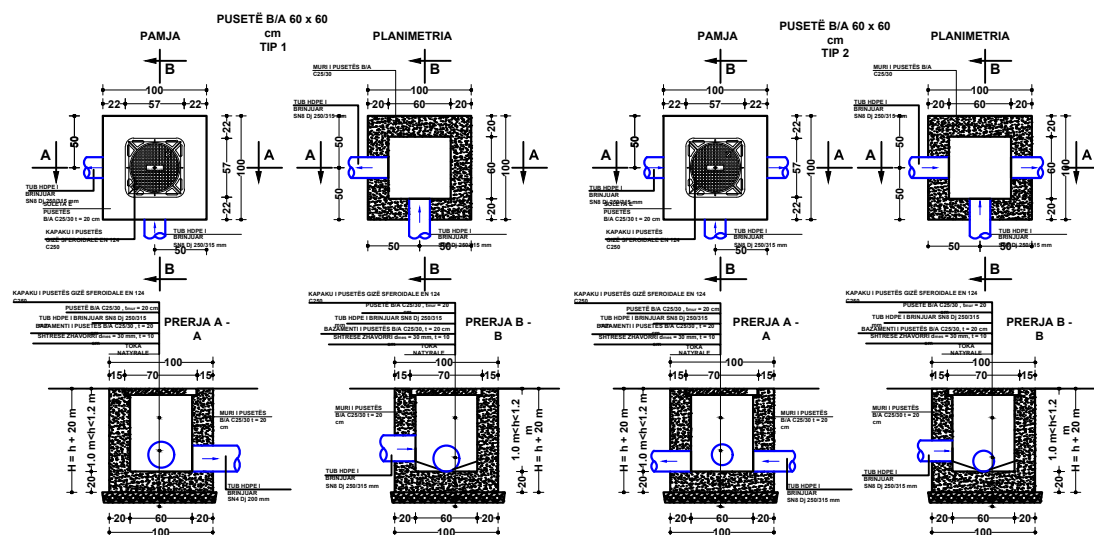
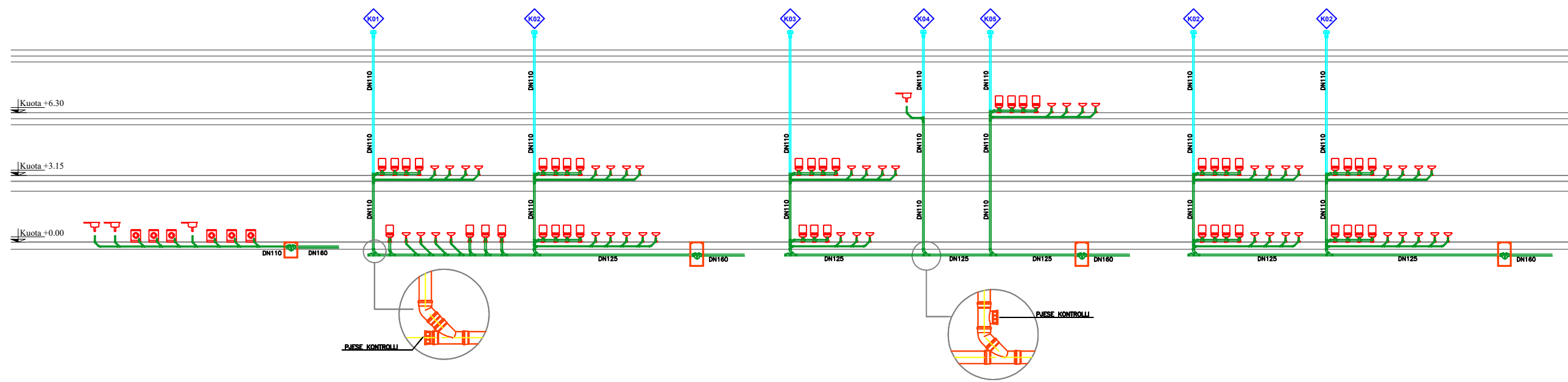
Disiplina Teknike kryesore / Primary Technical Discipline  
HYDROSANITARY / HIDROSANITARE ME

Nr. dhe Titulli i Fletës / Page No. and Title HS - 11

MBLEDHJA/LARGIMI I UJRAVE TE  
NDOTURA - KATI I DYTE

Rishikim Nr. / Revision No. 00

Spec.: Shk. / Sc. 1:200



00	Rishikim	Punoi:	Kontrollor:	Mirator:	Dati:
Rev. No.	Revision	Drawn by:	Checked by:	Approved by:	Date:

PLAN REFERENCË /  
KEY PLAN

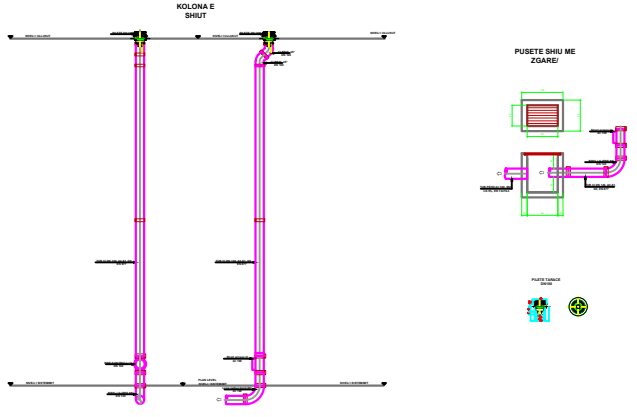


Projekti / Project 24AL-KC

**KOPËSHËT-CERDHE E INTEGRUAR**  
 Rr. " Muharrem Caushi", n.j str KA/208  
 Faza / Phase  
 PROJEKT ZBATIMI/ IMPLEMENTATION PROJECT  
 Disiplina Teknikë kryesore / Primary Technical Discipline  
 HYDROSANITARY / HIDROSANITARE ME  
 Nr. dhe Titulli / Fields / Page No. and Title HS - 12

**KOLEKTORËT VERTIKALE TE  
SHKARKIMEVE - DETAJE PUSËTASH**

SHËNIME / NOTES

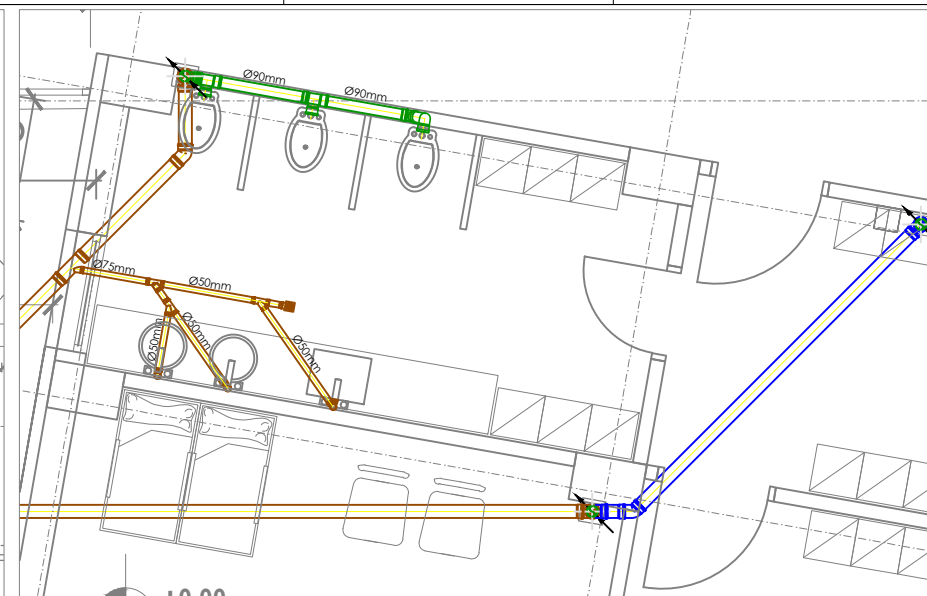
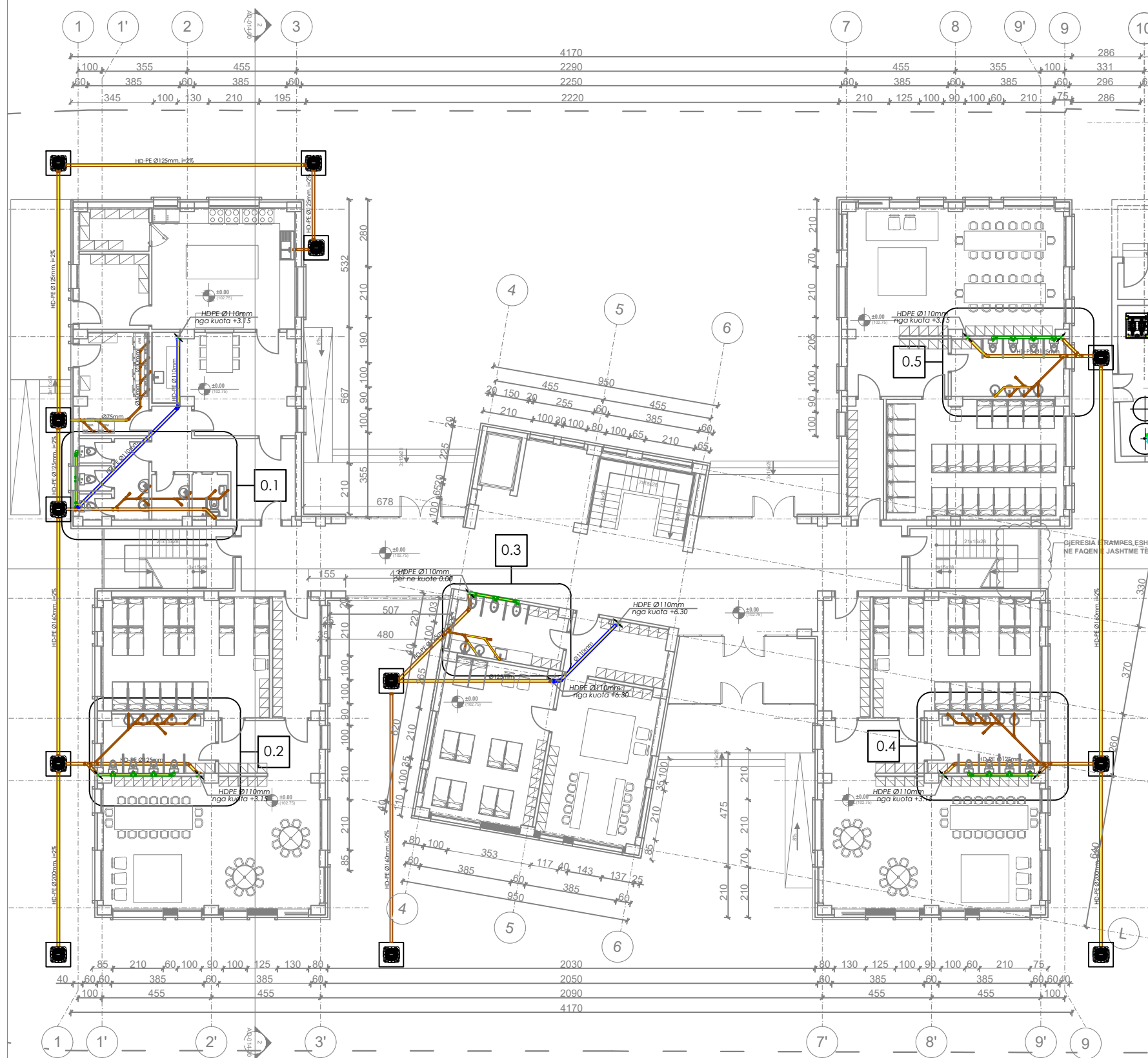


- UJURAT E SHIUT:
- TUBACIONET JASHTË GODINES**
- NIVELET E TUBACIONEVE DUHET TE KONTROLOHEN ME NDERMARRJEN E UJESJELLESAVE PERKATES DHE SUPERVIZORIN E PUNIMEVE.
  - TE GJITHA TUBACIONET E JASHTME JANE POLIETILENI TE BIRNEZUAR ME 2 SHTRESA.
  - MATERIALI I TUBACIONEVE DUHET TE JETE NE PERPUTHJE ME EN 13476-3.
  - GJITHA PUSËTAT E UJRAVE TE SHIUT DO TE JENE PREJ BETONI.

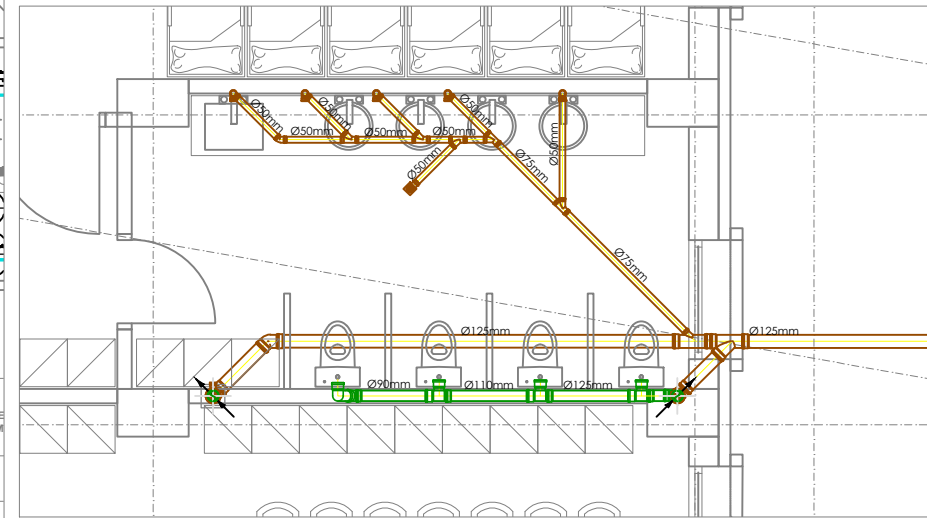


00	SHËNIM	APLIKIM	AS	Mars 2021
Rsh. Nr.	Rishikim	Punoi:	Kontrollor:	Mirator:
Rev. No.	Revision	Drawn by:	Checked by:	Approved by:

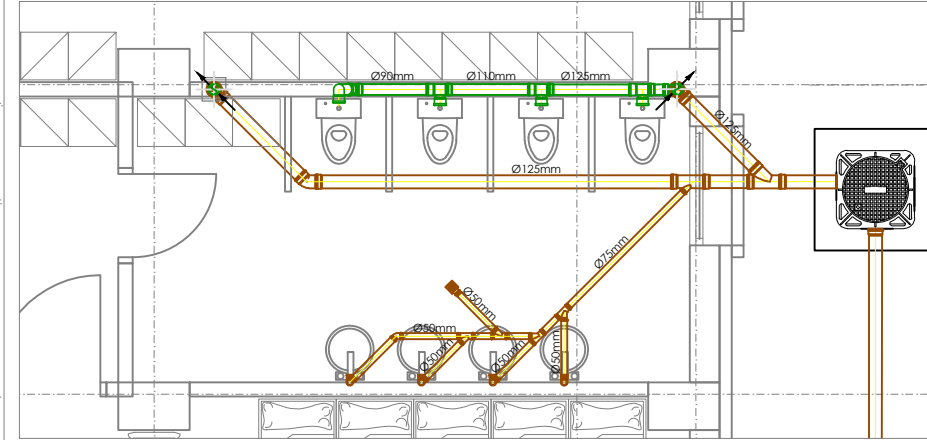
PLAN REFERENCË / KEY PLAN



0.3 AMBJENTI SANITAR no. 3  
SHKALLA: 1:100



0.4 AMBJENTI SANITAR no. 4  
SHKALLA: 1:100



0.5 AMBJENTI SANITAR no. 5  
SHKALLA: 1:100

PRONËSIA  
PR

**BASHKIA TIRANË**

INVESTITOR  
PRONËSIA

**BASHKIA TIRANË**

STUDIO PROJEKTIMI  
ARCHITECTURE STUDIO

**ASA** AS ARCHITECTS  
BRINGING SPACE TO LIFE

MECHANICAL ENGINEER  
ING. MEKANIK  
Artan DERSHA

SHËNIME / NOTES

Rev. No.	Rishikim / Revision	Punoi: / Drawn by:	Kontrollor: / Checked by:	Mirator: / Approved by:	Data: / Date:
00					

PLAN REFERENCË /  
KEY PLAN

Projekti / Project: 24AL-KC

**KOPËSHT-CERDHE E INTEGRUAR**  
Rr. " Muharrem Caushi", n.j str KA/208

Faza / Phase: **PROJEKT ZBATIM/ IMPLEMENTATION PROJECT**

Disiplina Teknike kryesore / Primary Technical Discipline: **ME**

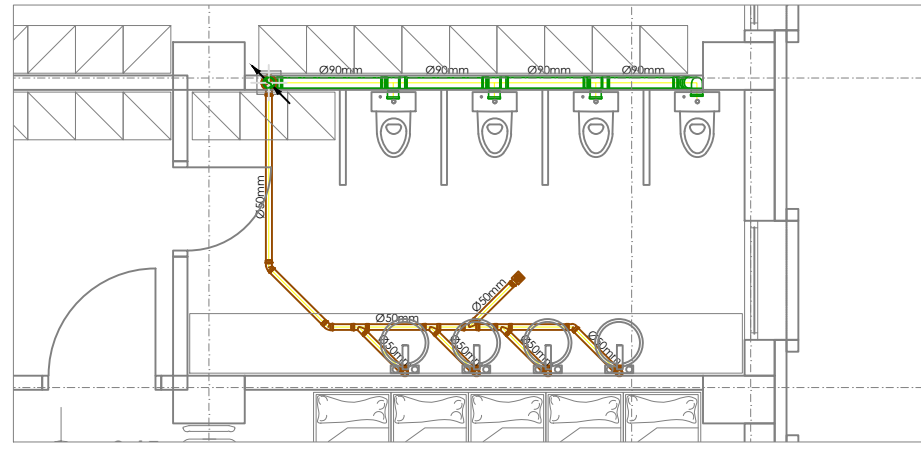
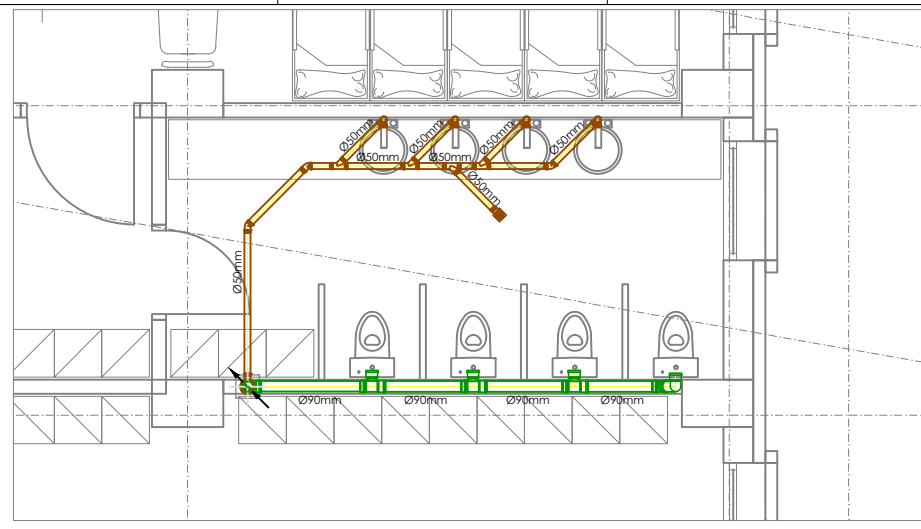
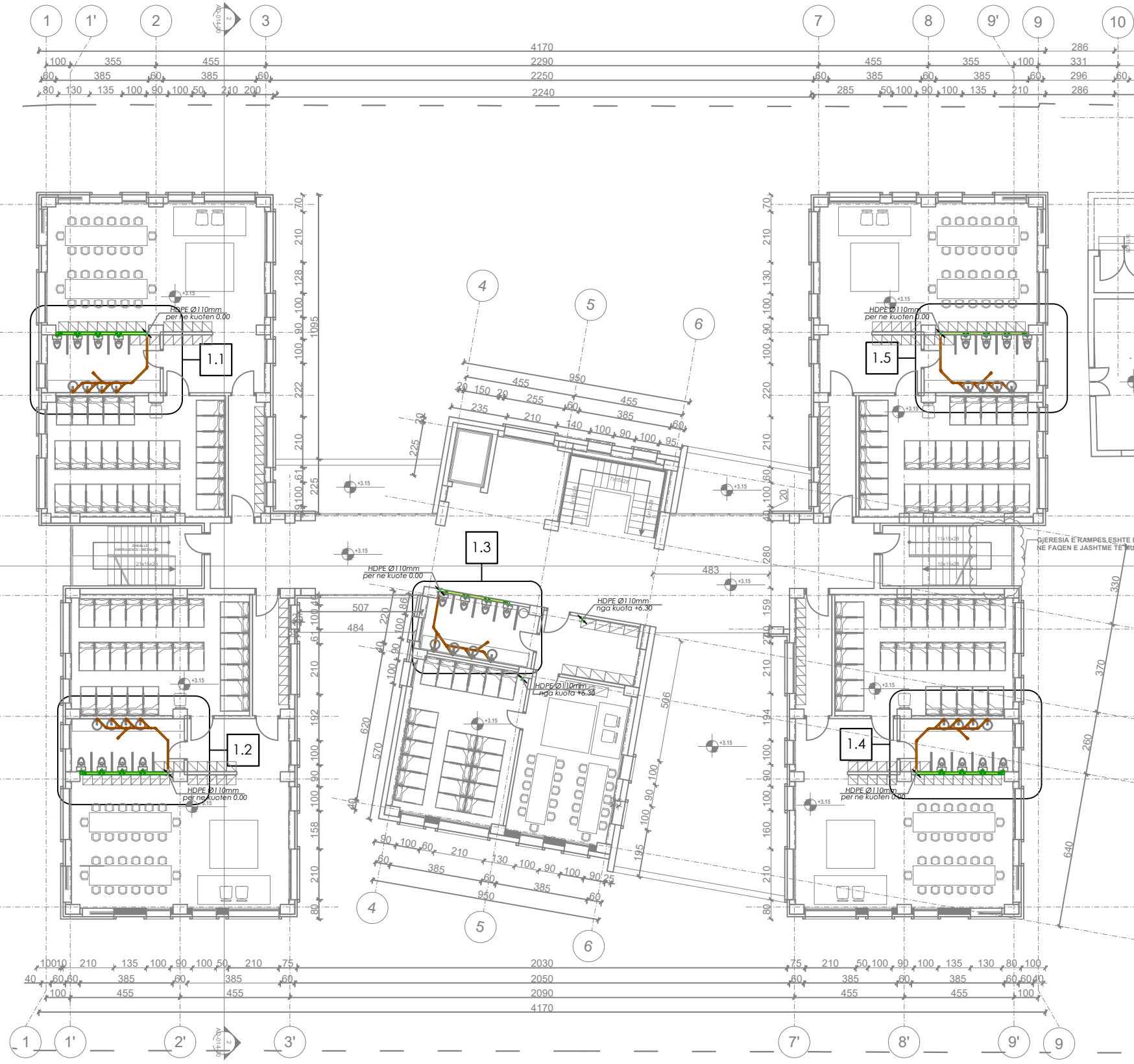
**HYDROSANITARE / HYDROSANITARE**

Nr. dhe Titulli i Fletës / Page No. and Title: **HS - 08**

**MBLEDHJA/LARGIMI I UJRAVE TE NDOTURA - KATI PERDHE**

Rishikim Nr. / Revision No.: 00

Spec.: Shk. / Sc.: 1:200



PRONËSIA  
PR

**BASHKIA TIRANË**

INVESTITOR  
PRONËSIA

**BASHKIA TIRANË**

STUDIO PROJEKTIMI  
ARCHITECTURE STUDIO

**ASA** ASARCHITECTS  
BRINGING SPACE TO LIFE

MECHANICAL ENGINEER  
ING. MEKANIK  
Artan DERSHA

SHËNIME / NOTES

Rrh. Nr.	Rishikim	Punoi:	Kontroll:	Mirato:	Data:
Rev. No.	Revision	Drawn by:	Checked by:	Approved by:	Date:
00		SH/SS/EP	AP/LML/D	AS	Mars 2021
		OSKM			

PLAN REFERENCË /  
KEY PLAN

Projekti / Project 24AL-KC

**KOPËSHET-CERDHE E INTEGRUAR**  
Rr. " Muharrem Caushi", n.j str KA/208

Faza / Phase  
PROJEKT ZBATIMI/ IMPLEMENTATION PROJECT

Disiplina Teknike kryesore / Primary Technical Discipline  
**HYDROSANITARE / HIDROSANITARE** ME

Nr. dhe Titulli i Fletës / Page No. and Title  
HS - 10

**MBLEDHJA/LARGIMI I UJRAVE TE  
NDOURA - KATI I PARE**

Rishikim Nr. / Revision No. 00

Spec.: Shk. / Sc. 1:200