

# ARMIMI I TRAUT NE AKSIN A, KUOTA +3.69 m

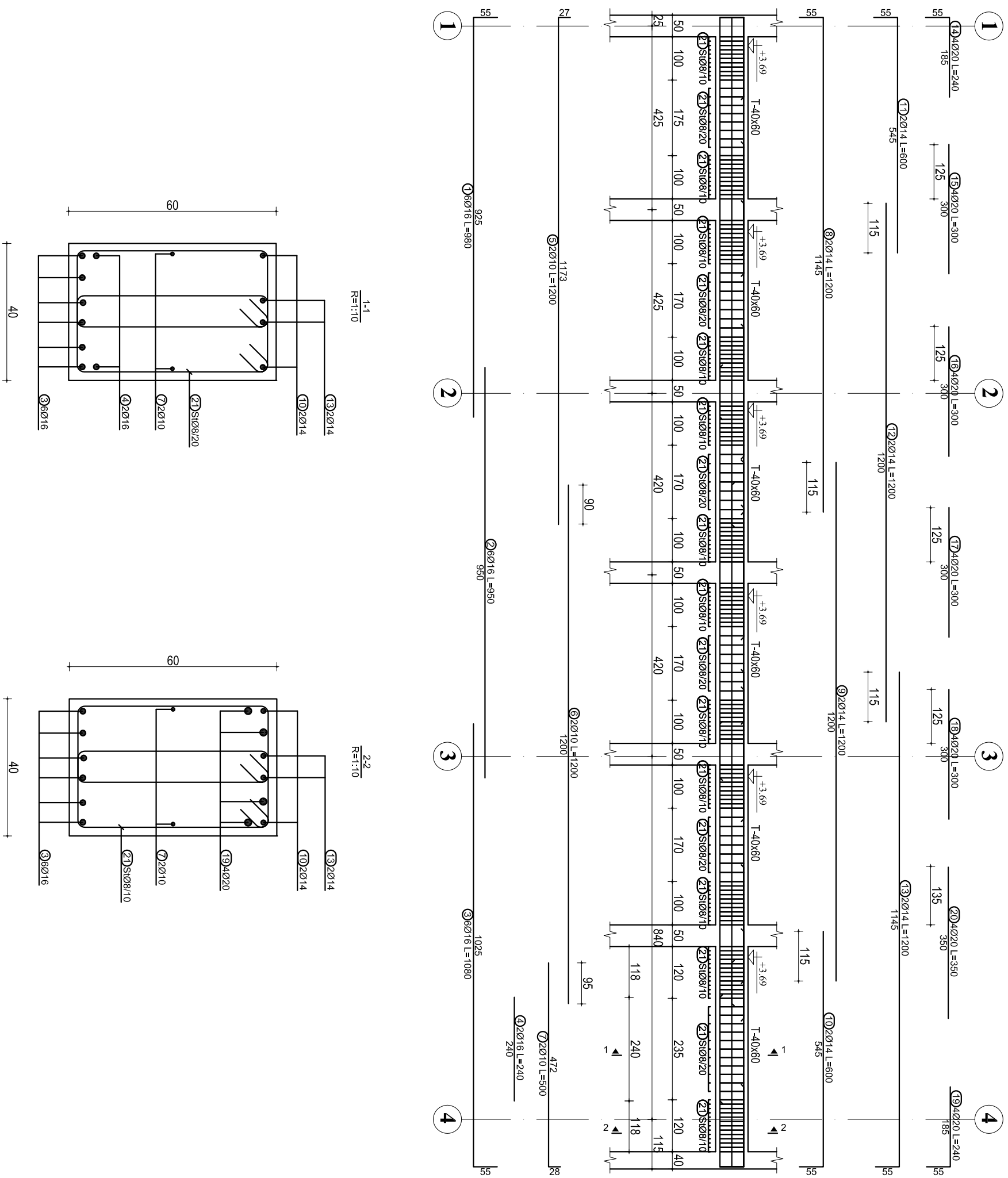


TABELA E SPECIFIKIMIT TE ARMATURES

Nr.	FORMA DHE PERMASAT [cm]	Ø	l [m]	n [copez]	l(totale) [m]
Trau ne aksin A, kuota +3.69 m (1 cope)					
1	925	16	9.80	6	58.80
2	950	16	9.50	6	57.00
3	1025	16	10.80	6	64.80
4	240	16	2.40	2	4.80
5	1173	10	12.00	2	24.00
6	1200	10	12.00	2	24.00
7	472	10	5.00	2	10.00
8	1145	14	12.00	2	24.00
9	1200	14	12.00	2	24.00
10	545	14	6.00	2	12.00
11	545	14	6.00	2	12.00
12	1200	14	12.00	2	24.00
13	1145	14	12.00	2	24.00
14	185	20	2.40	4	9.60
15	300	20	3.00	4	12.00
16	300	20	3.00	4	12.00
17	300	20	3.00	4	12.00
18	300	20	3.00	4	12.00
19	185	20	2.40	4	9.60
20	350	20	3.50	4	14.00
21	55	8	1.70	366	622.20

OBJEKTI:  
 EMERTIMI: ARMIMI I TRAUVE, KUOTA +3.69 m  
 KONSTRUKTOR: **DHIMITER PAPA** K.15102  
 SHENIME TEKNIKE:  
 BETONI: C 30/37  
 HEKUPI: S500 OSE EKUIVALENT  
 Nr. Fieles: **K-113**  
 Dl.





# ARMIMI I TRAUT NE AKSIN C, KUOTA +3.69 m

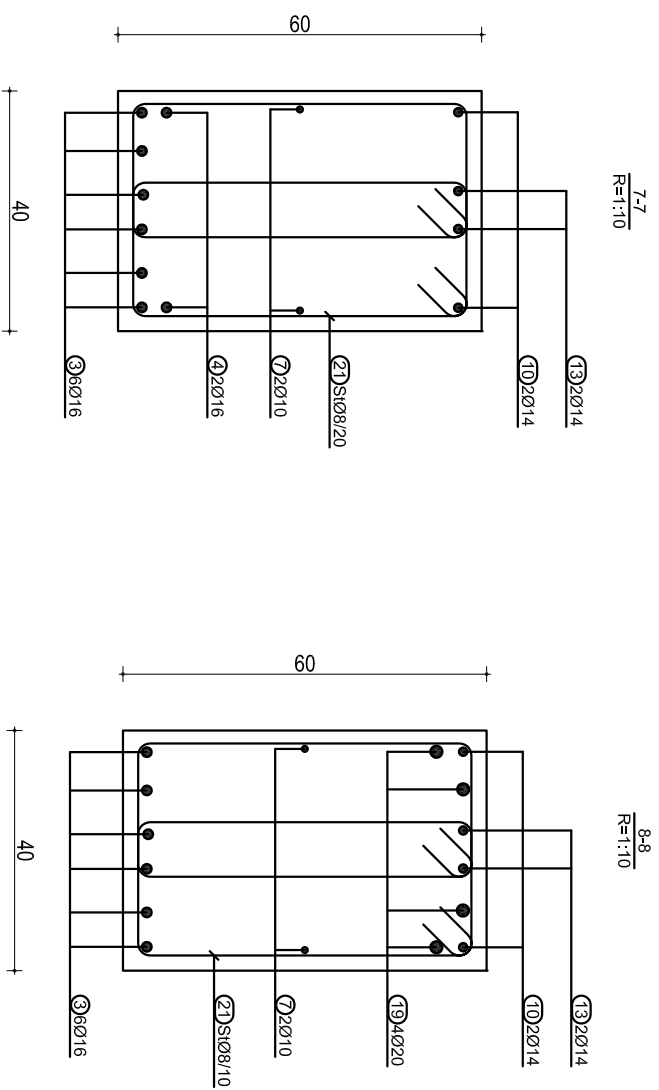
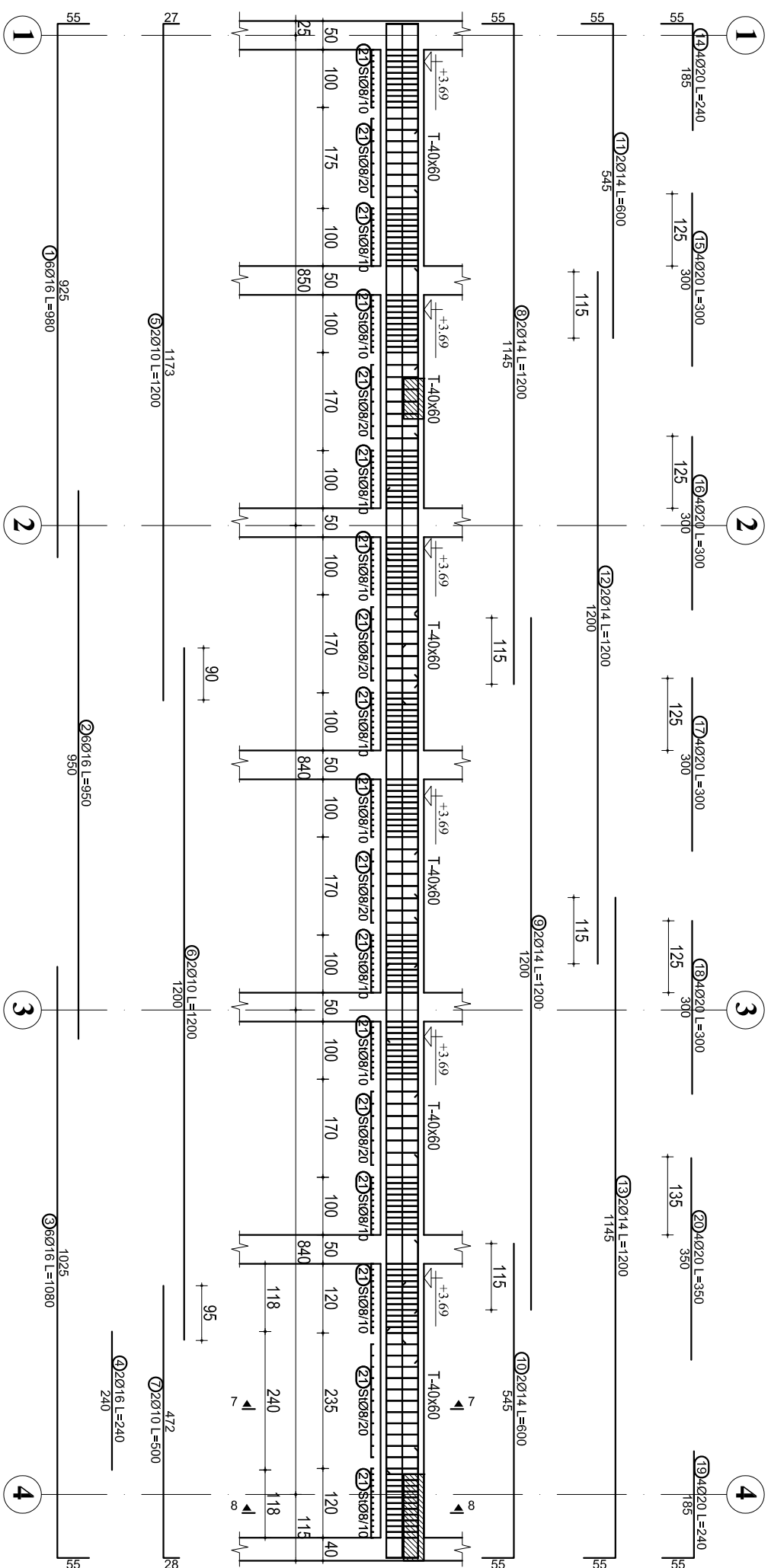


TABELA E SPECIFIKIMIT TE ARMATURES					
Nr.	FORMA DHE PERMASAT [cm]	Ø	l [m]	n [cope]	(totale) [m]
Trau ne aksin C, kuota +3.69 m (1 cope)					
1	925	16	9.80	6	58.80
2	950	16	9.50	6	57.00
3	1025	16	10.80	6	64.80
4	240	16	2.40	2	4.80
5	1173	10	12.00	2	24.00
6	1200	10	12.00	2	24.00
7	472	10	5.00	2	10.00
8	1145	14	12.00	2	24.00
9	1200	14	12.00	2	24.00
10	545	14	6.00	2	12.00
11	545	14	6.00	2	12.00
12	1200	14	12.00	2	24.00
13	1145	14	12.00	2	24.00
14	185	20	2.40	4	9.60
15	300	20	3.00	4	12.00
16	300	20	3.00	4	12.00
17	300	20	3.00	4	12.00
18	300	20	3.00	4	12.00
19	185	20	2.40	4	9.60
20	350	20	3.50	4	14.00
21	55	8	1.70	366	622.20

OBJEKTI:	
EMERTIMI: ARMIMI I TRAUVE, KUOTA +3.69 m	K.15/10/2
KONSTRUKTOR	<b>DHIMITER PAPA</b>
KONSTRUKTOR	Nr. Fielers
KONSTRUKTOR	<b>K-116</b>
HEKUPRI: S500 OSE EKUIVALENT	Dl.

SHENIME TEKNIKE:  
 BETONI: C 30/37  
 HEKUPRI: S500 OSE EKUIVALENT

# ARMIMI I TRAUT NE AKSIN D, KUOTA +3.69 m

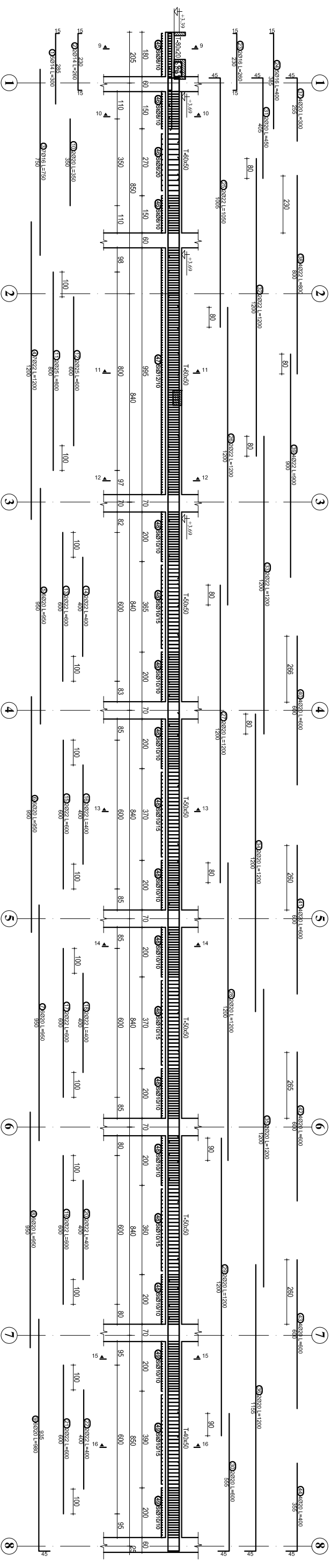
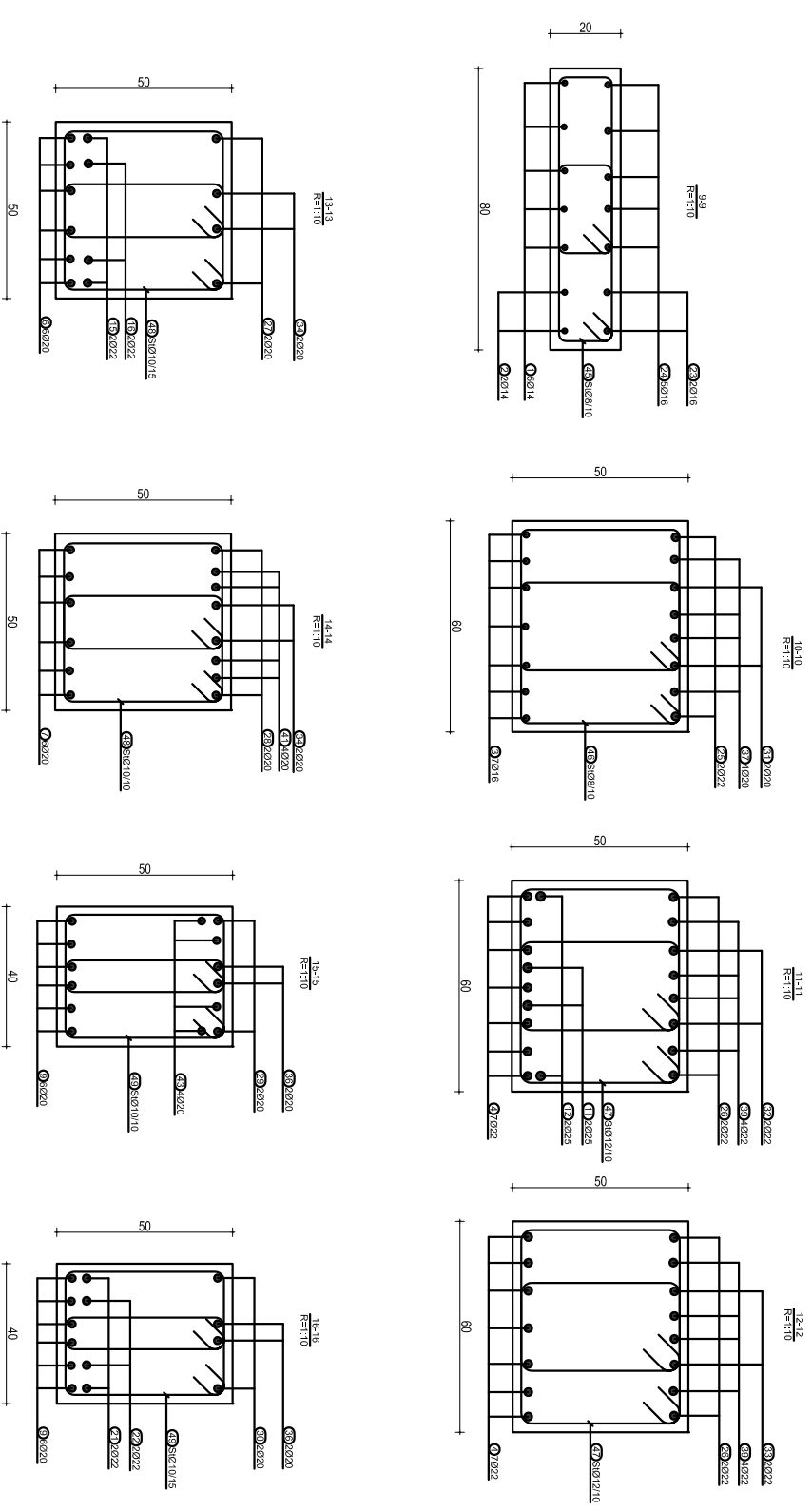


TABELA E SPECIFIKIMIT TE ARMATURES

Nr.	FORMA DHE PERMASAT [cm]	Ø	l [m]	n [copje]	(l*n) [m]
Traut ne aksin D, kuota +3.69 m (1 copje)					
1	285	14	3.00	5	15.00
2	230	14	2.60	2	5.20
3	750	16	7.50	7	52.50
4	1200	22	12.00	7	84.00
5	950	20	9.50	6	57.00
6	950	20	9.50	6	57.00
7	950	20	9.50	6	57.00
8	950	20	9.50	6	57.00
9	835	20	9.80	6	58.80
10	350	20	3.50	2	7.00
11	800	25	8.00	2	16.00
12	600	25	6.00	2	12.00
13	600	22	6.00	2	12.00
14	400	22	4.00	2	8.00
15	600	22	6.00	2	12.00
16	400	22	4.00	2	8.00
17	600	22	6.00	2	12.00
18	400	22	4.00	2	8.00
19	600	22	6.00	2	12.00
20	400	22	4.00	2	8.00
21	600	22	6.00	2	12.00
22	400	22	4.00	2	8.00
23	230	16	2.60	2	5.20
24	385	16	4.00	5	20.00
25	1005	22	10.50	2	21.00

26	1200	22	12.00	2	24.00
27	1200	20	12.00	2	24.00
28	1200	20	12.00	2	24.00
29	1200	20	12.00	2	24.00
30	555	20	6.00	2	12.00
31	405	20	4.50	2	9.00
32	1200	22	12.00	2	24.00
33	1200	22	12.00	2	24.00
34	1200	20	12.00	2	24.00
35	1200	20	12.00	2	24.00
36	1155	20	12.00	2	24.00
37	295	20	3.00	4	12.00
38	800	22	8.00	4	32.00
39	900	22	9.00	4	36.00
40	600	20	6.00	4	24.00
41	600	20	6.00	4	24.00
42	600	20	6.00	4	24.00
43	600	20	6.00	4	24.00
44	355	20	4.00	4	16.00
45	50	8	1.46	36	52.56
46	45	8	1.86	88	163.68
47	45	12	1.90	200	380.00
48	45	10	1.66	524	869.84
49	45	10	1.50	134	201.00



SHENIME TEKNIKE:

BETONI: C 30/37

HEKURI: S500 OSE EKUIVALENT

OBJEKTI:	EMERTIMI:	KONSTRUKTOR	Nr. Fletës
ARMIMI I TRAVEVE, KUOTA +3.69 m	<b>DHIMITER PAPA</b>	K.151/02	<b>K-117</b>
			Dl.

# ARMIMI I TRAUT MBI AKSIN D(1-3), KUOTA +3.69 m

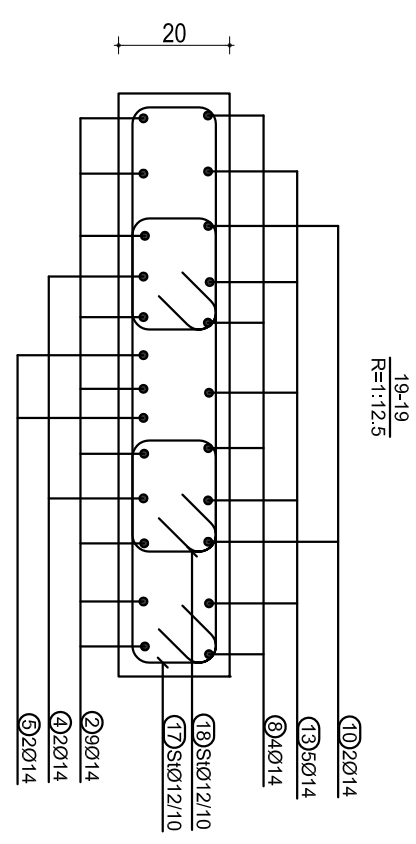
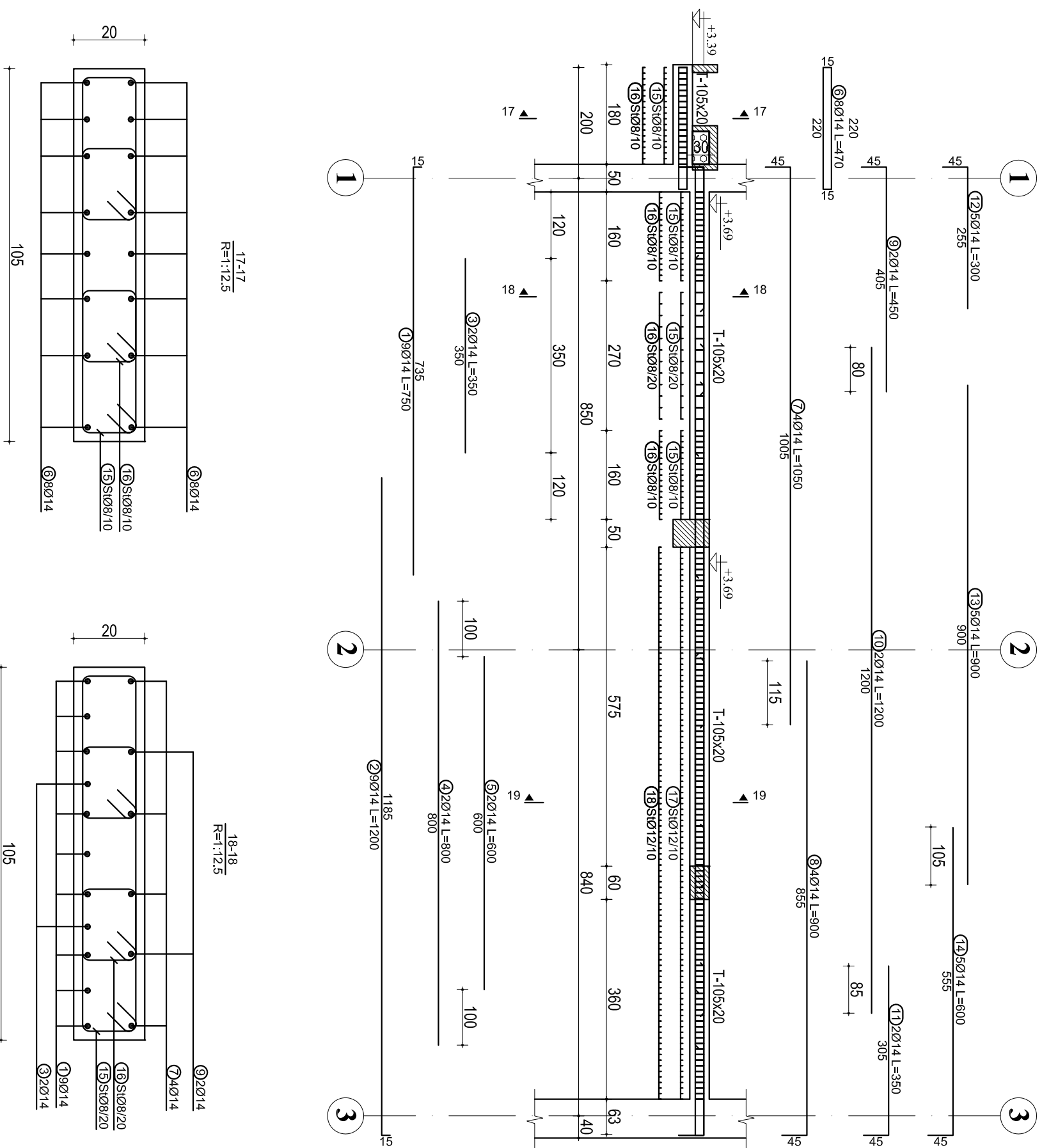


TABELA E SPECIFIKIMIT TE ARMATURES					
Nr.	FORMA DHE PERMASAT [cm]	Ø	l [m]	n [cope]	l( totale) [m]
Trau mbi aksin D(1-3), Kuota +3.69 m (1 cope)					
1	735	14	7.50	9	67.50
2	1185	14	12.00	9	108.00
3	350	14	3.50	2	7.00
4	800	14	8.00	2	16.00
5	600	14	6.00	2	12.00
6	220	14	4.70	8	37.60
7	1005	14	10.50	4	42.00
8	855	14	9.00	4	36.00
9	405	14	4.50	2	9.00
10	1200	14	12.00	2	24.00
11	305	14	3.50	2	7.00
12	255	14	3.00	5	15.00
13	900	14	9.00	5	45.00
14	555	14	6.00	5	30.00
15	100	8	2.46	64	157.44
16	100	8	0.86	128	110.08
17	100	12	2.50	100	250.00
18	100	12	0.90	200	180.00

OBJEKTI:	
EMERTIMI: ARMIMI I TRAVEE, KUOTA +3.69 m	K.15/102
KONSTRUKTOR	<b>DHIMITER PAPA</b>
KONSTRUKTOR	Nr. Fielers
KONSTRUKTOR	<b>K-118</b>
HEKURPI: S500 OSE EKUIVALENT	Dl.

17-17  
R=1:12.5

18-18  
R=1:12.5

19-19  
R=1:12.5

# ARMIMI I TRAUT NE AKSIN E(1-3), KUOTA +3.69 m

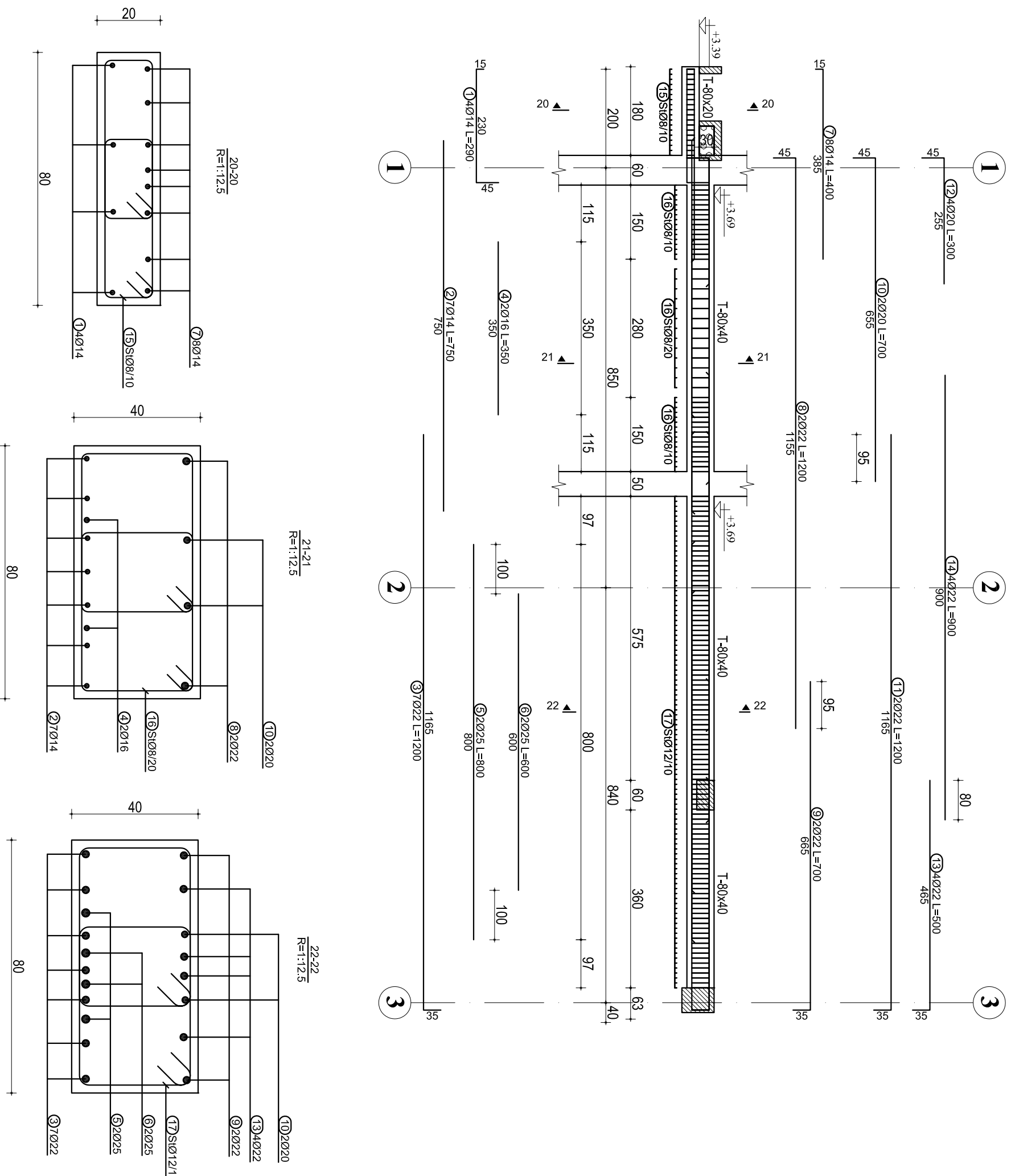
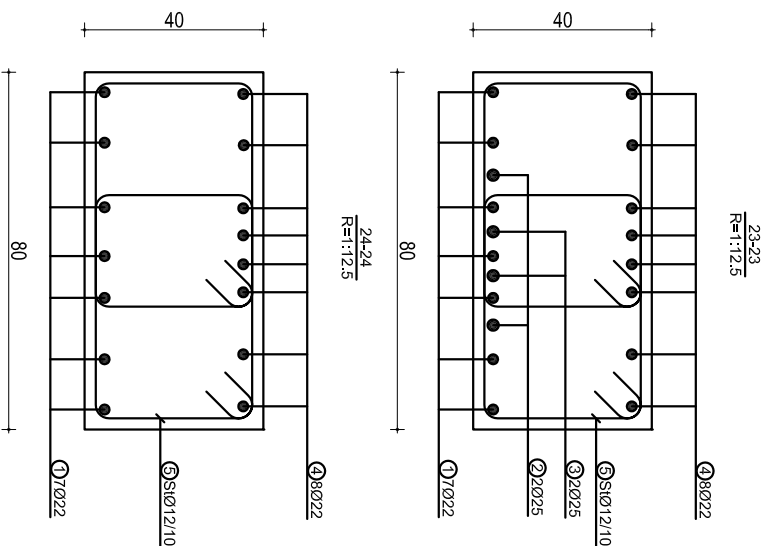
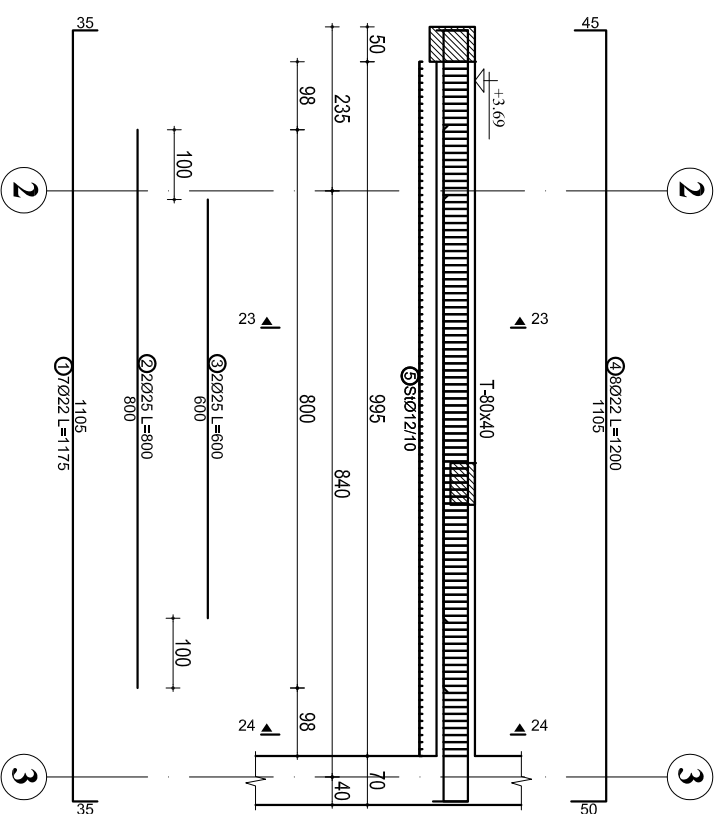


TABELA E SPECIFIKIMIT TE ARMATURES

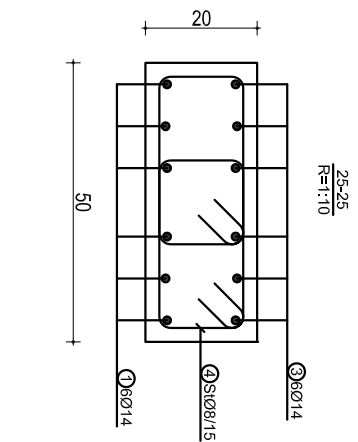
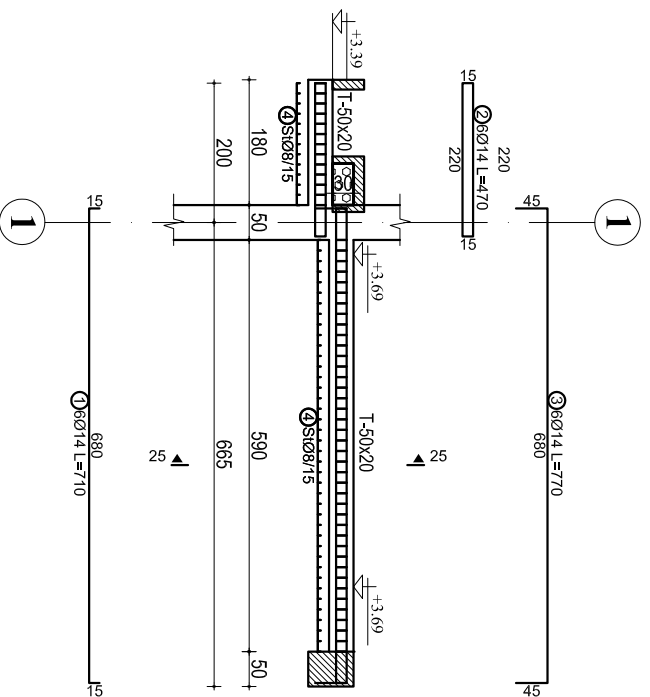
Nr.	FORMA DHE PERMASAT [cm]	Ø	l [m]	n [copë]	l(totale) [m]
Trau ne aksin E(1-3), Kuota +3.69 m (1 cope)					
1		14	2.90	4	11.60
2		14	7.50	7	52.50
3		22	12.00	7	84.00
4		16	3.50	2	7.00
5		25	8.00	2	16.00
6		25	6.00	2	12.00
7		14	4.00	8	32.00
8		22	12.00	2	24.00
9		22	7.00	2	14.00
10		20	7.00	2	14.00
11		22	12.00	2	24.00
12		20	3.00	4	12.00
13		22	5.00	4	20.00
14		22	9.00	4	36.00
15		8	1.46	36	52.56
16		8	1.86	90	167.40
17		12	1.90	200	380.00

OBJEKTI:  
 EMERTIMI: ARMIMI I TRAUVE, KUOTA +3.69 m  
 KONSTRUKTOR: **DHIMITER PAPA** K.15/10/2  
 SHENIME TEKNIKE:  
 BETONI: C 30/37  
 HEKUPI: S500 OSE EKUIVALENT  
 Nr. Fletës: **K-119**  
 Dl.

**ARMIMI I TRAUT NE AKSIN F(2-3), KUOTA +3.69 m**



**ARMIMI I TRAUT NEN AKSIN F(1-2), KUOTA +3.69 m**



**ARMIMI I TRAUT NE AKSIN G(1-2), KUOTA +3.69 m**

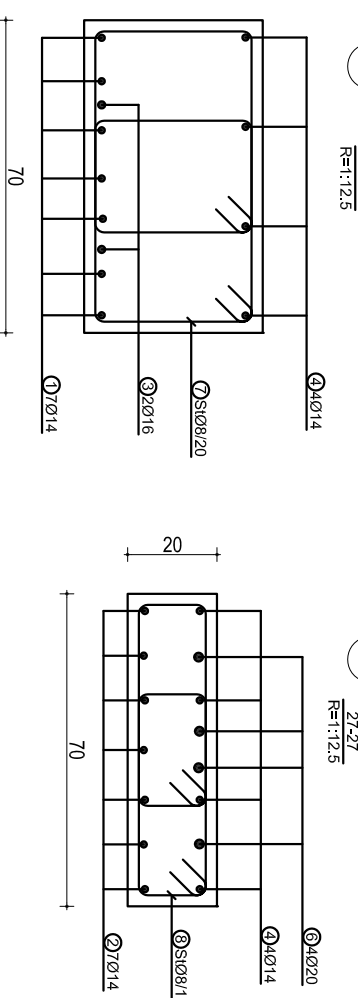
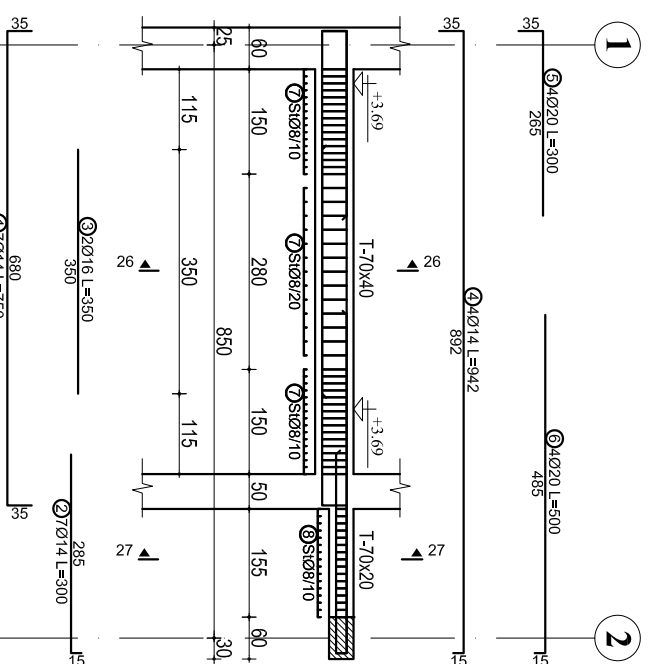


TABELA E SPECIFIKIMIT TE ARMATURES

Nr.	FORMA DHE PERMASAT [cm]	Ø	l [m]	n [cope]	l(totale) [m]
Trau ne aksin F(2-3), kuota +3.69 m (1 cope)					
1	1105	Ø22	11.75	7	82.25
2	800	Ø25	8.00	2	16.00
3	600	Ø25	6.00	2	12.00
4	1105	Ø22	12.00	8	96.00
5	50x50	Ø22	1.90	200	380.00
Trau nen aksin F(1-2), kuota +3.69 m (1 cope)					
1	680	Ø14	7.10	6	42.60
2	220	Ø14	4.70	6	28.20
3	680	Ø14	7.70	6	46.20
4	30x30	Ø14	1.06	106	112.36
Trau ne aksin G(1-2), kuota +3.69 m (1 cope)					
1	680	Ø14	7.50	7	52.50
2	285	Ø14	3.00	7	21.00
3	350	Ø14	3.50	2	7.00
4	892	Ø14	9.42	4	37.68
5	265	Ø14	3.00	4	12.00
6	485	Ø14	5.00	4	20.00
7	45x45	Ø14	1.76	90	158.40
8	45x45	Ø14	1.36	32	43.52

SHENIME TEKNIKE:  
BETONI: C 30/37  
HEKURI: S500 OSE EKUIVALENT

OBJEKTI:		
EMERTIMI: ARMIMI I TRAREVE, KUOTA +3.69 m		
KONSTRUKTOR	DHIMITER PAPA	K.15/102
KONSTRUKTOR		Ni. Fieles
KONSTRUKTOR		K-120
		Dl.



# ARMIMI I TRAUT NE AKSIN H, KUOTA +3.69 m

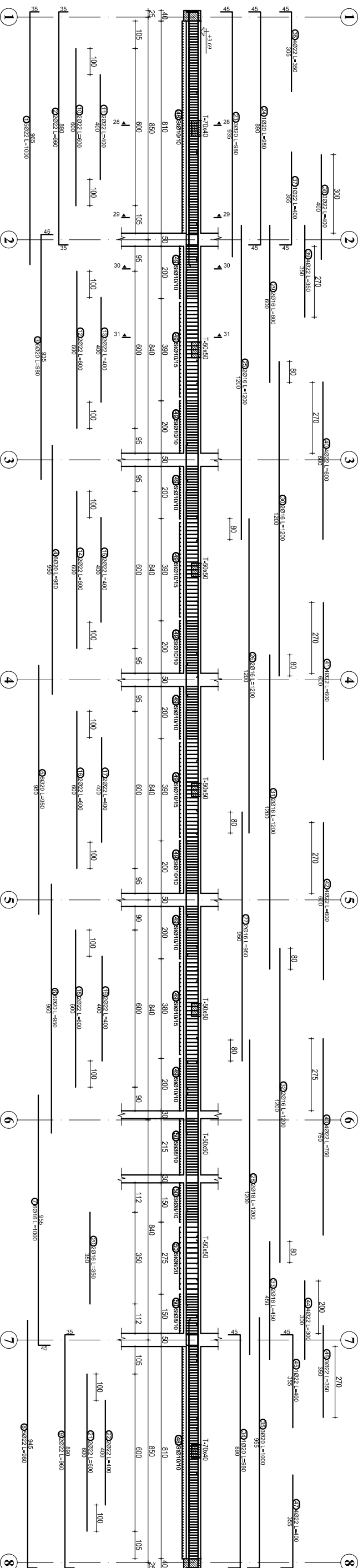
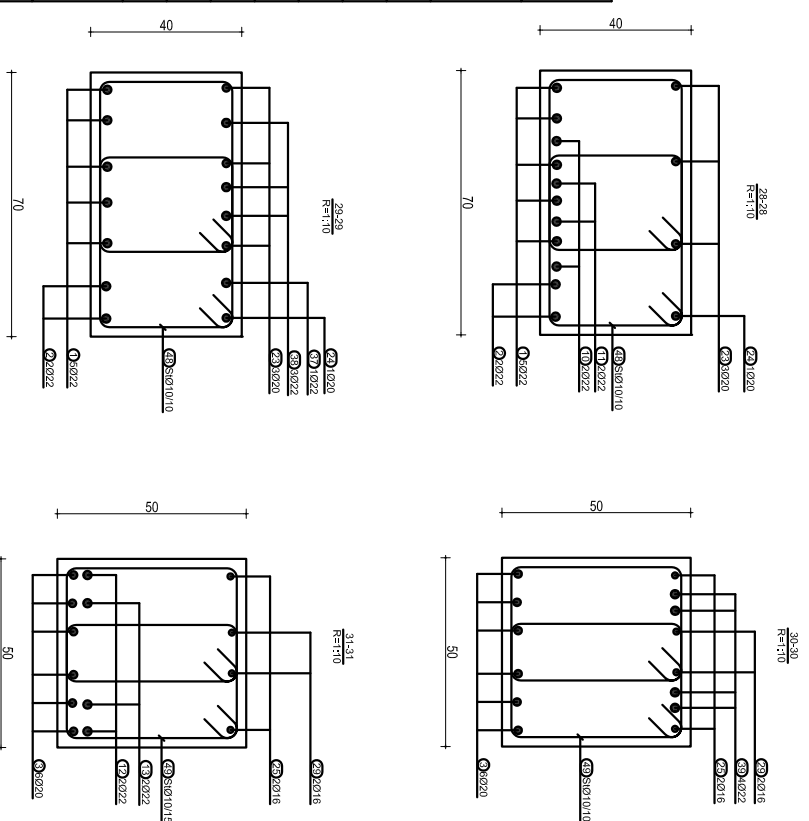


TABELA E SPECIFIKIMIT TE ARMATURES

Nr.	FORMA DHE PERMASAT [cm]	Ø	l [m]	n [cople]	l (totale) [m]
1	965	22	10.00	5	50.00
2	890	22	9.60	2	19.20
3	935	20	9.80	6	58.80
4	950	20	9.50	6	57.00
5	950	20	9.50	6	57.00
6	950	20	9.50	6	57.00
7	955	16	10.00	6	60.00
8	945	22	9.80	5	49.00
9	890	22	9.60	2	19.20
10	600	22	6.00	2	12.00
11	400	22	4.00	2	8.00
12	600	22	6.00	2	12.00
13	400	22	4.00	2	8.00
14	600	22	6.00	2	12.00

15	400	22	4.00	2	8.00
16	600	22	6.00	2	12.00
17	400	22	4.00	2	8.00
18	600	22	6.00	2	12.00
19	400	22	4.00	2	8.00
20	350	16	3.50	2	7.00
21	600	22	6.00	2	12.00
22	400	22	4.00	2	8.00
23	935	20	9.80	3	29.40
24	890	20	9.80	1	9.80
25	1200	16	12.00	2	24.00
26	1200	16	12.00	2	24.00
27	950	16	9.50	2	19.00
28	1200	16	12.00	2	24.00
29	600	16	6.00	2	12.00
30	1200	16	12.00	2	24.00
31	1200	16	12.00	2	24.00
32	1200	16	12.00	2	24.00
33	450	16	4.50	2	9.00
34	890	20	9.80	1	9.80
35	955	20	10.00	3	30.00

36	305	22	3.50	4	14.00
37	355	22	4.00	1	4.00
38	400	22	4.00	3	12.00
39	350	22	3.50	4	14.00
40	600	22	6.00	4	24.00
41	600	22	6.00	4	24.00
42	600	22	6.00	4	24.00
43	750	22	7.50	4	30.00
44	300	22	3.00	4	12.00
45	355	22	4.00	1	4.00
46	350	22	3.50	3	10.50
47	355	22	4.00	4	16.00
48	45	10	1.76	328	577.28
49	45	10	1.66	534	886.44
50	45	8	1.66	134	222.44



SHENIME TEKNIKE:  
 BETONI: C 30/37  
 HEKURI: S500 OSE EKUIVALENT

OBJEKTI:	
ENERJITIM: ARMIMI I TRAVEVE, KUOTA +3.69 m	
KONSTRUKTOR	DHIMITER PAPA
KONSTRUKTOR	K.15102
KONSTRUKTOR	Ni. Fletis
KONSTRUKTOR	K-121
	Dl.

# ARMIMI I TRAUT NE AKSIN I(1-6), KUOTA +3.69 m

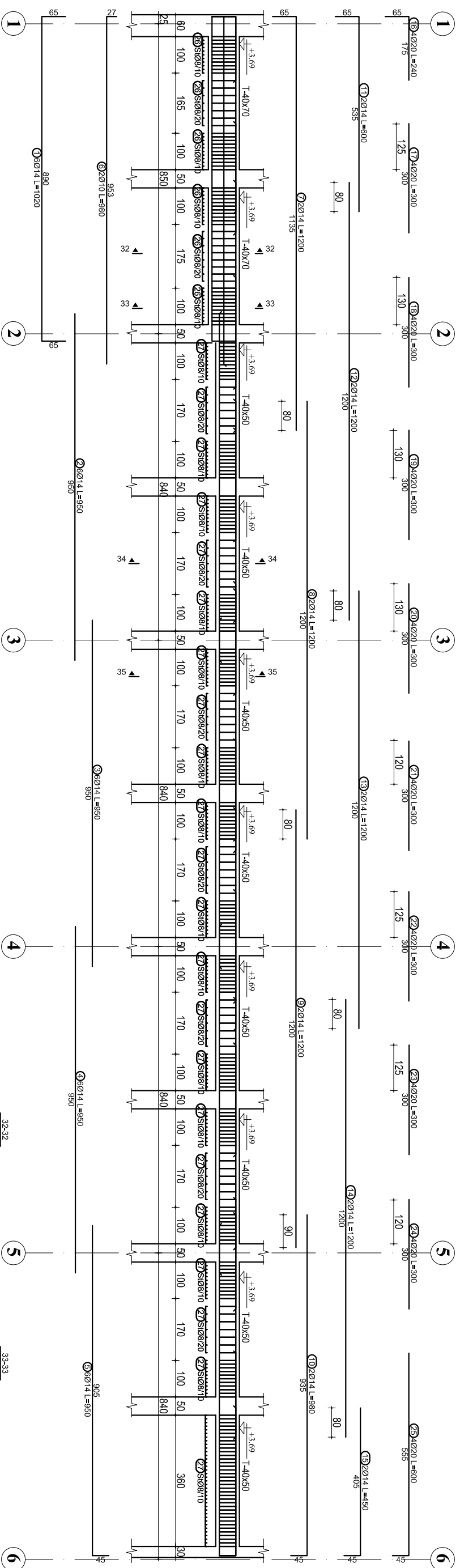
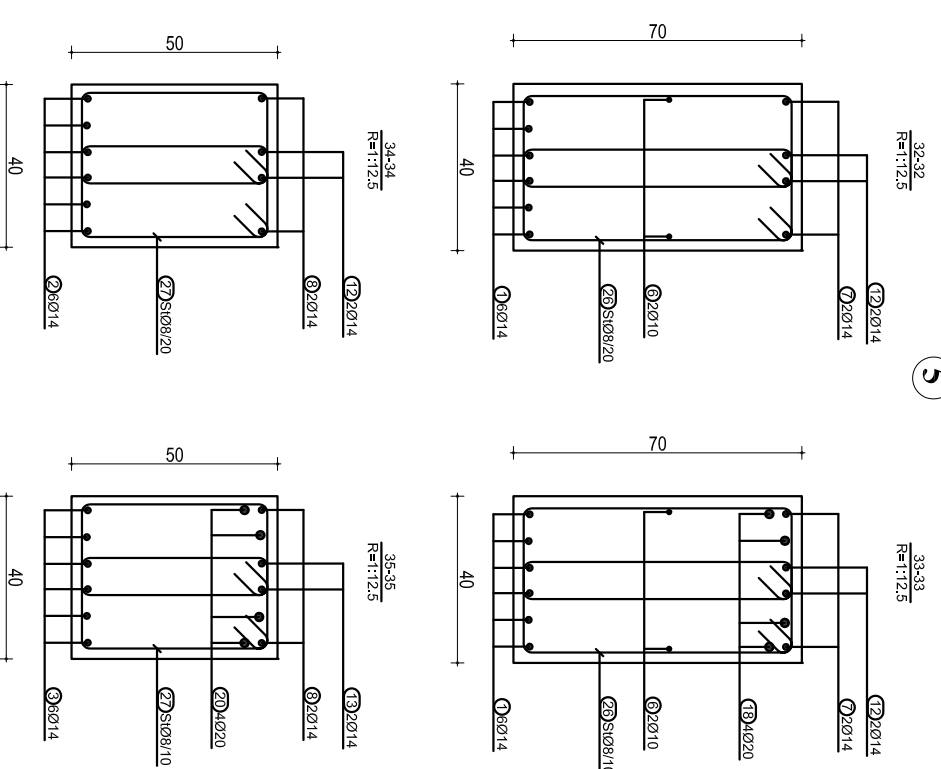


TABELA E SPECIFIKIMIT TE ARMATURES

NR.	FORMA DHE PERMASAT [cm]	Ø	l [m]	n [copel]	l(totale) [m]
1	890	14	10.20	6	61.20
2	950	14	9.50	6	57.00
3	950	14	9.50	6	57.00
4	950	14	9.50	6	57.00
5	905	14	9.50	6	57.00
6	953	10	9.80	2	19.60
7	1135	14	12.00	2	24.00
8	1200	14	12.00	2	24.00
9	1200	14	12.00	2	24.00
10	935	14	9.80	2	19.60
11	535	14	6.00	2	12.00
12	1200	14	12.00	2	24.00

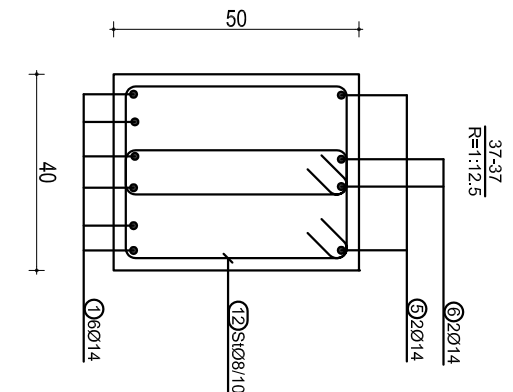
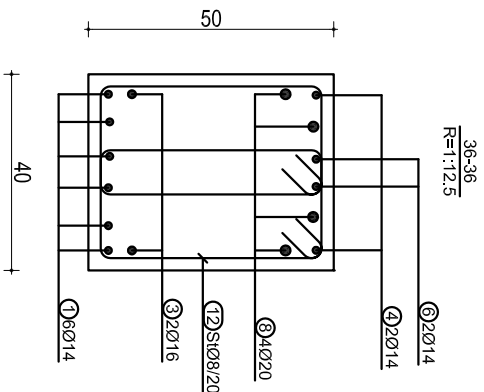
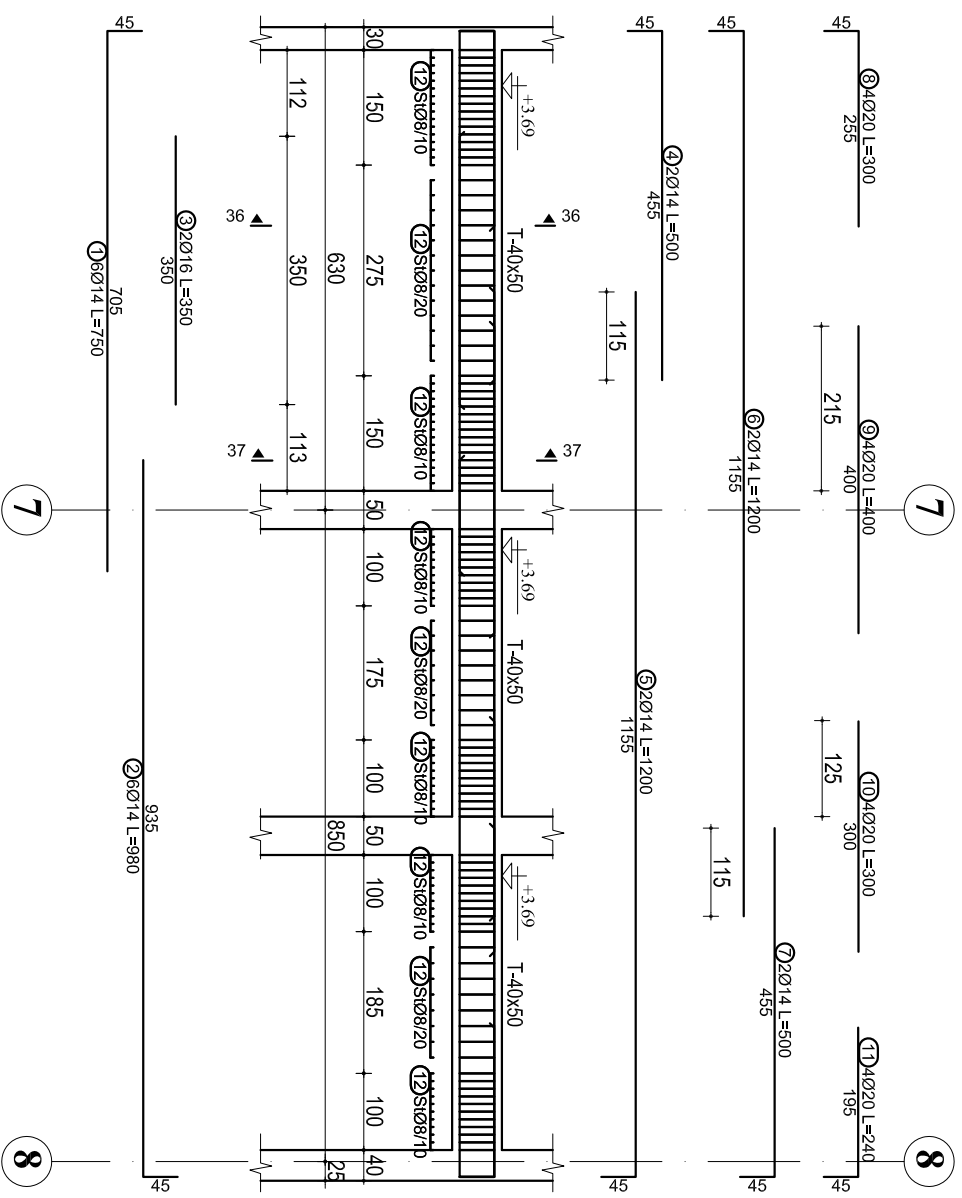
13	1200	14	12.00	2	24.00
14	1200	14	12.00	2	24.00
15	405	14	4.50	2	9.00
16	175	20	2.40	4	9.60
17	300	20	3.00	4	12.00
18	300	20	3.00	4	12.00
19	300	20	3.00	4	12.00
20	300	20	3.00	4	12.00
21	300	20	3.00	4	12.00
22	300	20	3.00	4	12.00
23	300	20	3.00	4	12.00
24	300	20	3.00	4	12.00
25	555	20	6.00	4	24.00
26	65	8	1.90	118	224.20
27	45	8	1.50	480	720.00



SHENIME TEKNIKE:  
 BETONI: C 30/37  
 HEKURI: S500 OSE EKVIVALENT

OBJEKTI:	
EMERTIMI: ARMIMI I TRAVEE, KUOTA +3.69 m	
KONSTRUKTOR	DHIMITER PAPA
KONSTRUKTOR	K.15102
KONSTRUKTOR	Ni. Fliers
KONSTRUKTOR	K-122
Dl.	

### ARMIMI I TRAUT NE AKSIN I(6-8), KUOTA +3.69 m



### ARMIMI I TRAUT NE AKSIN F(7-8), KUOTA +3.69 m

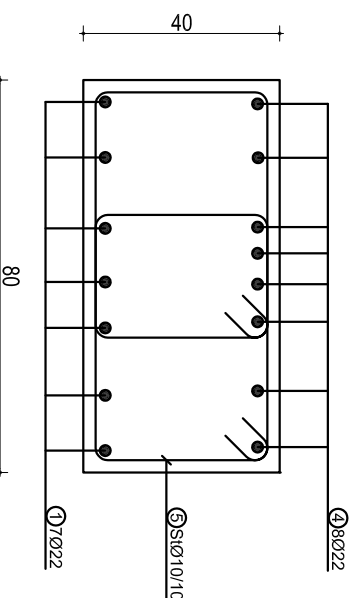
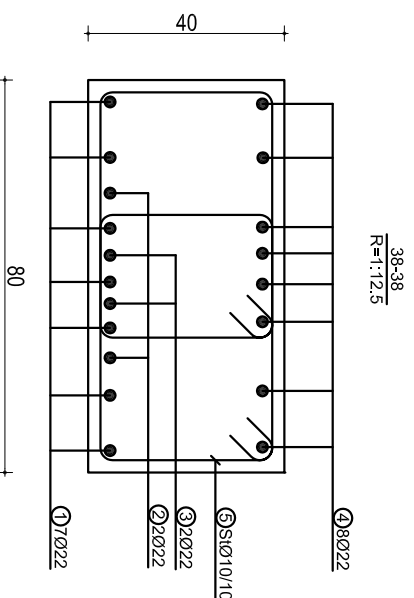
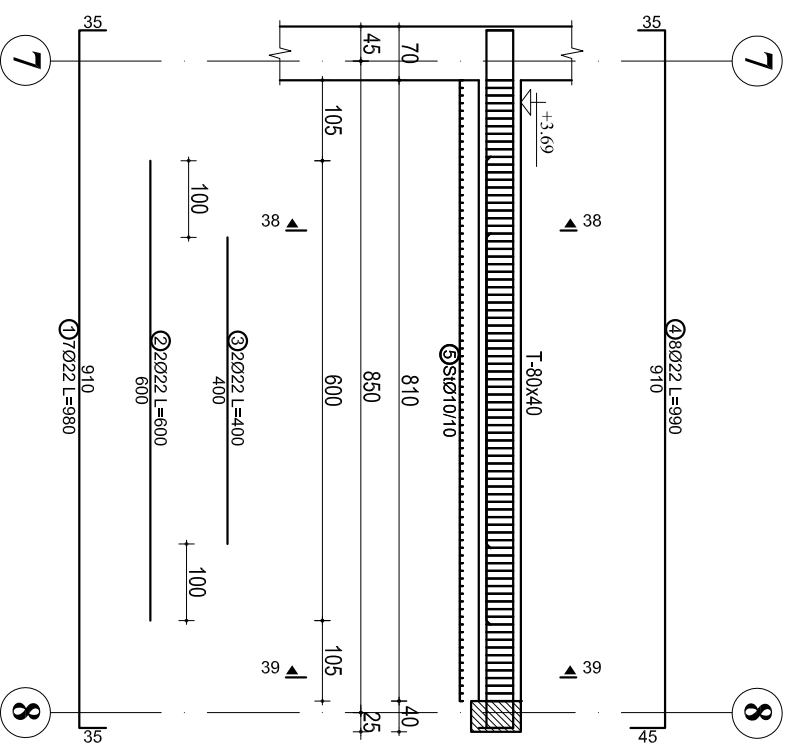
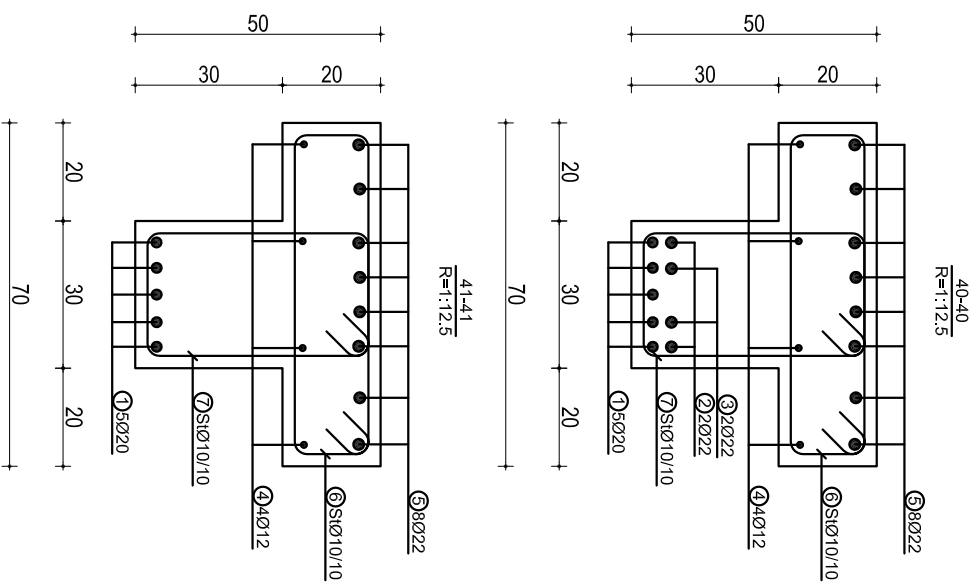
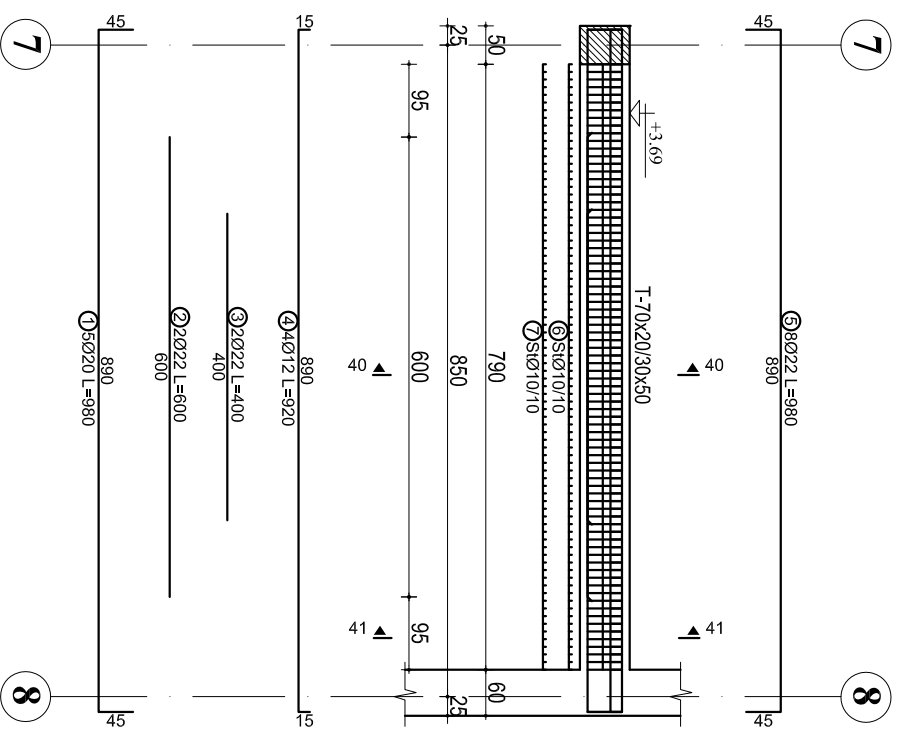


TABELA E SPECIFIKIMIT TE ARMATURES

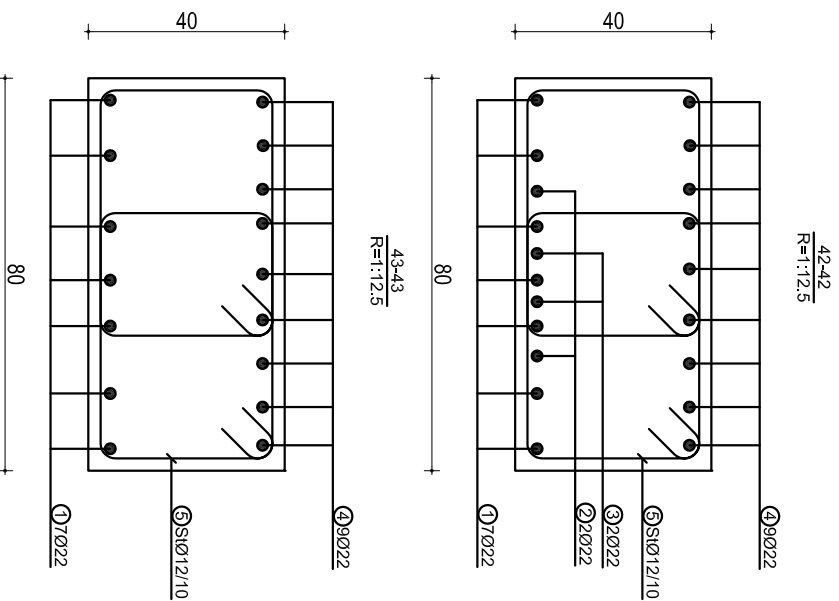
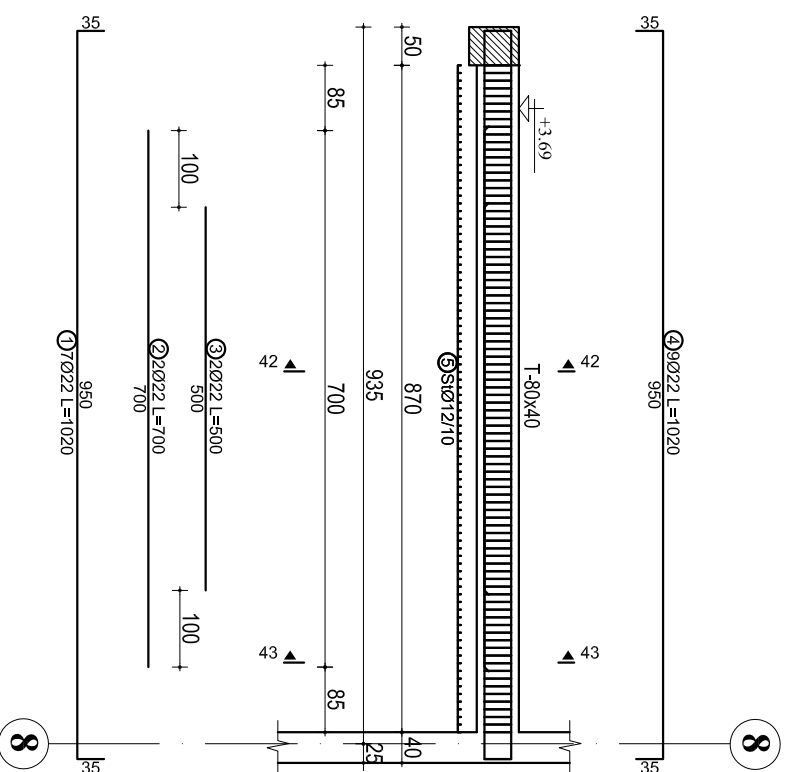
Nr.	FORMA DHE PERMASAT [cm]	Ø	l [m]	n [cope]	l(totale) [m]
Trau ne aksin I(6-8), kuota +3.69 m (1 cope)					
1		14	7.50	6	45.00
2		14	9.80	6	58.80
3		16	3.50	2	7.00
4		14	5.00	2	10.00
5		14	12.00	2	24.00
6		14	12.00	2	24.00
7		14	5.00	2	10.00
8		20	3.00	4	12.00
9		20	4.00	4	16.00
10		20	3.00	4	12.00
11		20	2.40	4	9.60
12		8	1.50	210	315.00
Trau ne aksin F(7-8), kuota +3.69 m (1 cope)					
1		22	9.80	7	68.60
2		22	6.00	2	12.00
3		22	4.00	2	8.00
4		22	9.90	8	79.20
5		10	1.86	164	305.04

OBJEKTI:  
 EMERTIMI: ARMIMI I TRAUENE, KUOTA +3.69 m  
 KONSTRUKTOR: **DHIMITER PAPA** K.15102  
 SHENIME TEKNIKE:  
 BETONI: C 30/37 NI: F16s  
 HEKUPI: S500 OSE EKUIVALENT K-123 DL.

**ARMIMI I TRAUT NE DHE NEN AKSIN E(7-8), KUOTA +3.69 m**



**ARMIMI I TRAUT MIDIS AKSEVE 7-8, KUOTA +3.69 m**



**TABELA E SPECIFIKIMIT TE ARMATURES**

Nr.	FORMA DHE PERMASAT [cm]	Ø	l [m]	n [cope]	l(totale) [m]
Trau ne dhe nen aksin E(7-8), kuota +3.69 m (1 cope)					
1	45 x 890	20	9.80	5	49.00
2	600	22	6.00	2	12.00
3	400	22	4.00	2	8.00
4	15 x 890	12	9.20	4	36.80
5	45 x 890	22	9.80	8	78.40
6	15 x 65	10	1.76	80	140.80
7	25 x 45	10	1.56	80	124.80

Trau midis akseve 7 dhe 8, kuota +3.69 m (1 cope)

1	35 x 950	22	10.20	7	71.40
2	700	22	7.00	2	14.00
3	500	22	5.00	2	10.00
4	35 x 950	22	10.20	9	91.80
5	35 x 50	12	1.90	176	334.40

OBJEKTI:	
EMERTIMI:	ARMIMI I TRAVEVE, KUOTA +3.69 m
KONSTRUKTOR:	DHIMITER PAPA
KONSTRUKTOR:	
KONSTRUKTOR:	
SHENIME TEKNIKE:	Nf. Fieles
BETONI: C 30/37	K-124
HEKURI: S500 OSE EKUIVALENT	Dl.

## **ARMIMI I TRAUT T-25x50 NE AKSIN A, NE KUOTEN E SHESH PUSHIMIT**

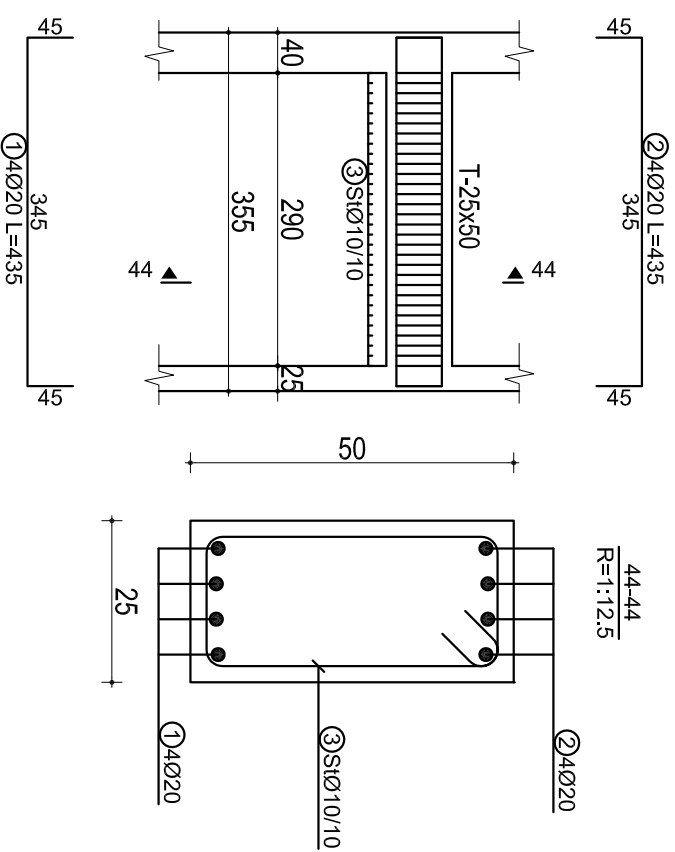
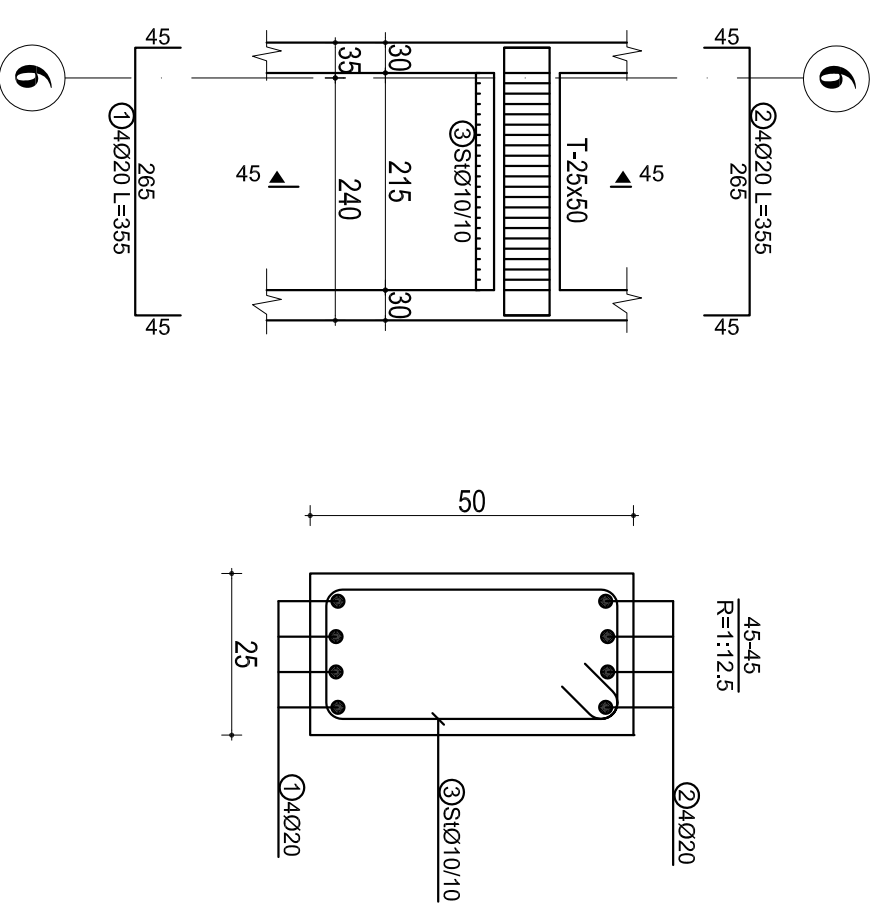


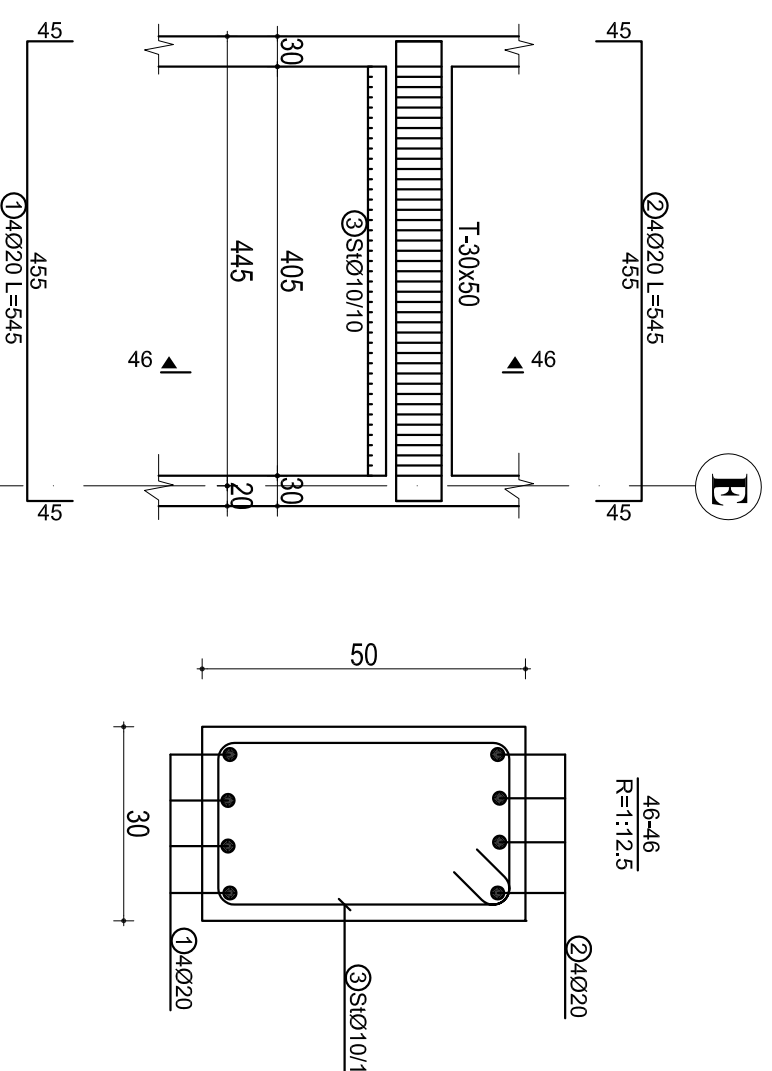
TABELA E SPECIFIKIMIT TE ARMATURES				
Nr.	FORMA DHE PERMASAT [cm]	Ø	l [m]	n [(totale) [cope] [m]]
Trau T-25x50 ne aksin A, ne kuoten e sheshpushimit (1 cope)				
1		20	4.35	4 17.40
2		20	4.35	4 17.40
3		10	1.46	30 43.80

Trau T-25x50 ne aksin I, ne kuoten e sheshpushimit (1 cope)				
1		20	3.55	4 14.20
2		20	3.55	4 14.20
3		10	1.46	22 32.12
Trau T-30x50 nen aksin 6, ne kuoten e sheshpushimit (1 cope)				
1		20	5.45	4 21.80
2		20	5.45	4 21.80
3		10	1.56	41 63.96

## **ARMIMI I TRAUT T-25x50 NE AKSIN I, NE KUOTEN E SHESH PUSHIMIT**



## **ARMIMI I TRAUT T-30x50 NEN AKSIN 6, NE KUOTEN E SHESH PUSHIMIT**



**SHENIME TEKNIKE:**  
BETONI: C 30/37  
HEKURI: S500 OSE EKUIVALENT

OBJEKTI:	
EMERTIMI: ARMIMI I TRAREVE, KLLOTA 4.389 m	
KONSTRUKTOR:	DHIMITER PAPA
KONSTRUKTOR:	
KONSTRUKTOR:	
	K.1510/2
	Ni. Fielis
	K-125
	Dl.

**ARMIMI I TRAUT T-25x50 NEN AKSIN 4,  
SIPAS PJERRRESISE SE SHKALLES**

**ARMIMI I TRAUT T-25x50 MBI AKSIN 5,  
SIPAS PJERRRESISE SE SHKALLES**

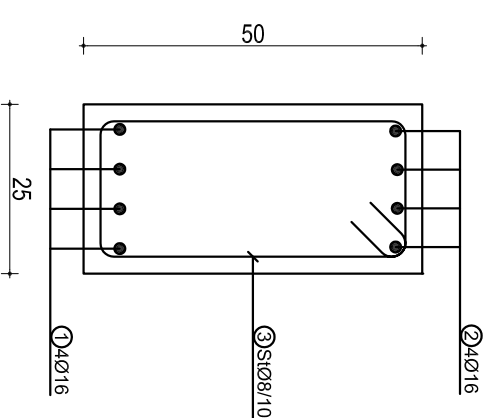
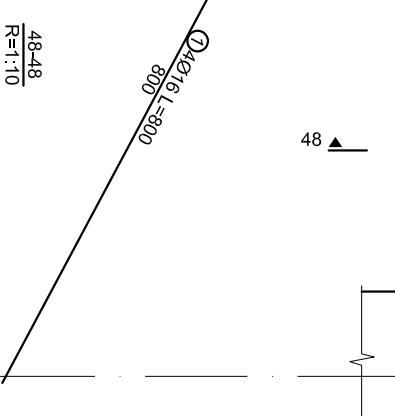
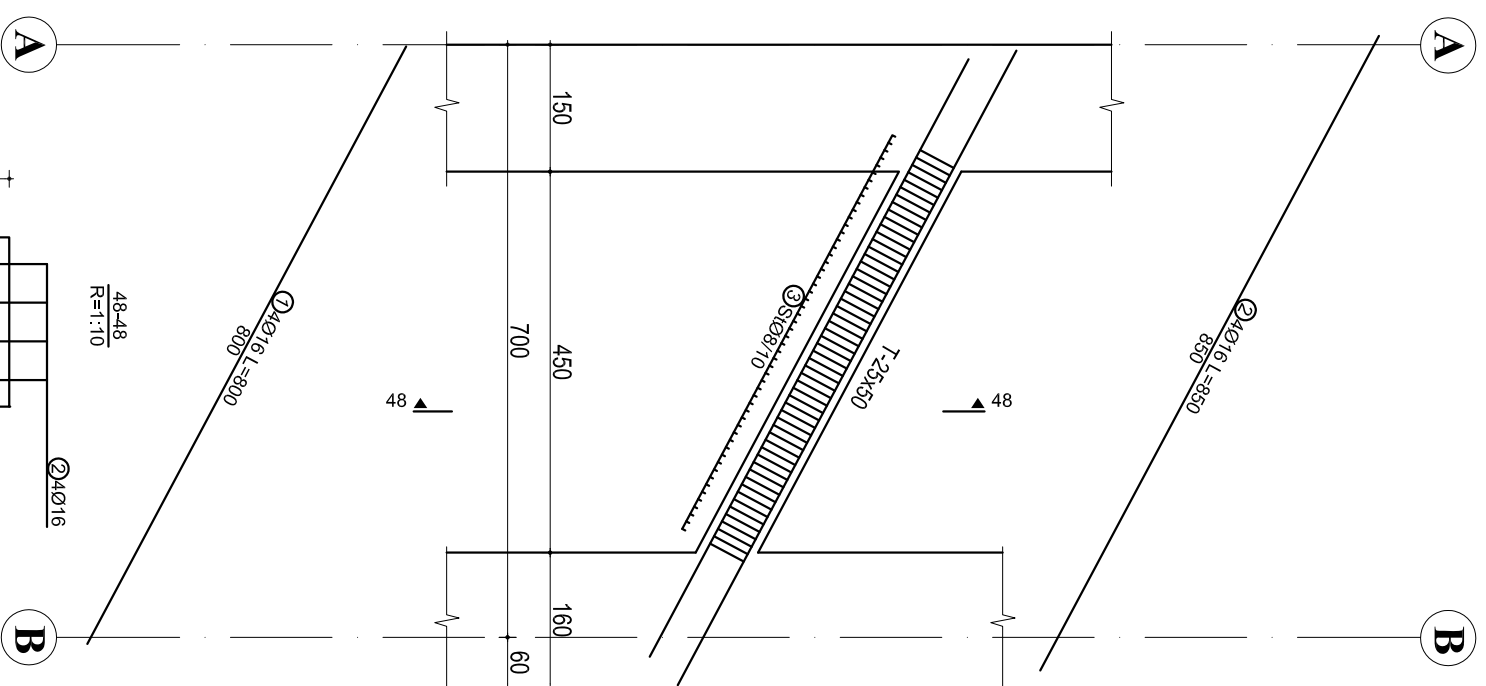
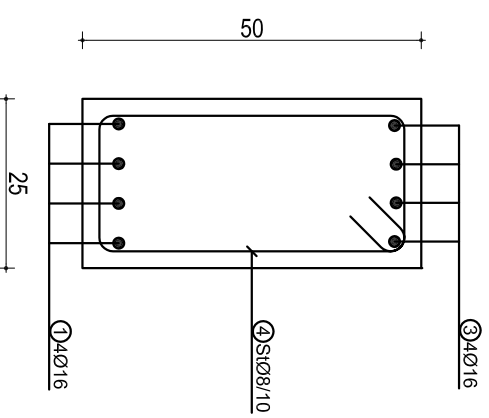
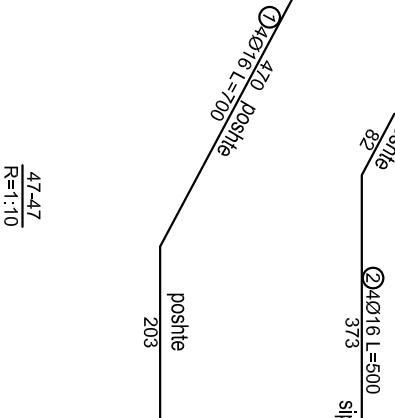
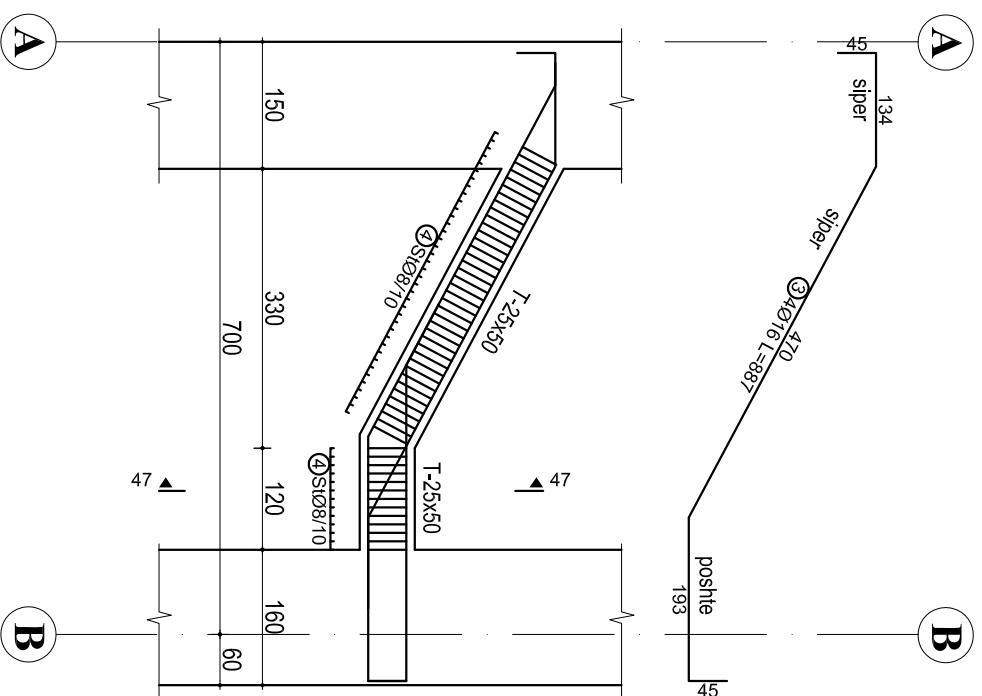


TABELA E SPECIFIKIMIT TE ARMATURES

Nr.	FORMA DHE PERMASAT [cm]	Ø	l [m]	n [cope]	l(totale) [m]
Trau T-25x50 nen aksin 4, sipas pjerrresise se shkalles (1 cope)					
1		16	7.00	4	28.00
2		16	5.00	4	20.00
3		16	8.87	4	35.48
4		8	1.46	51	74.46
Trau T-25x50 mbi aksin 5, sipas pjerrresise se shkalles (1 cope)					
1		16	8.00	4	32.00
2		16	8.50	4	34.00
3		8	1.46	54	78.84

SHENIME TEKNIKE:  
BETONI: C 30/37  
HEKURI: S500 OSE EKUIVALENT

OBJEKTI:			
EMERTIMI:	ARMIMI I TRAREVE, KILOTA 4.389 m		
KONSTRUKTOR:	DHIMITER PAPA	K.15102	
KONSTRUKTOR:			Nf. Fielis
KONSTRUKTOR:			K-126
			Dl.

# ARMIMI I TRAUT NE AKSIN 1, KUOTA +3.69 m

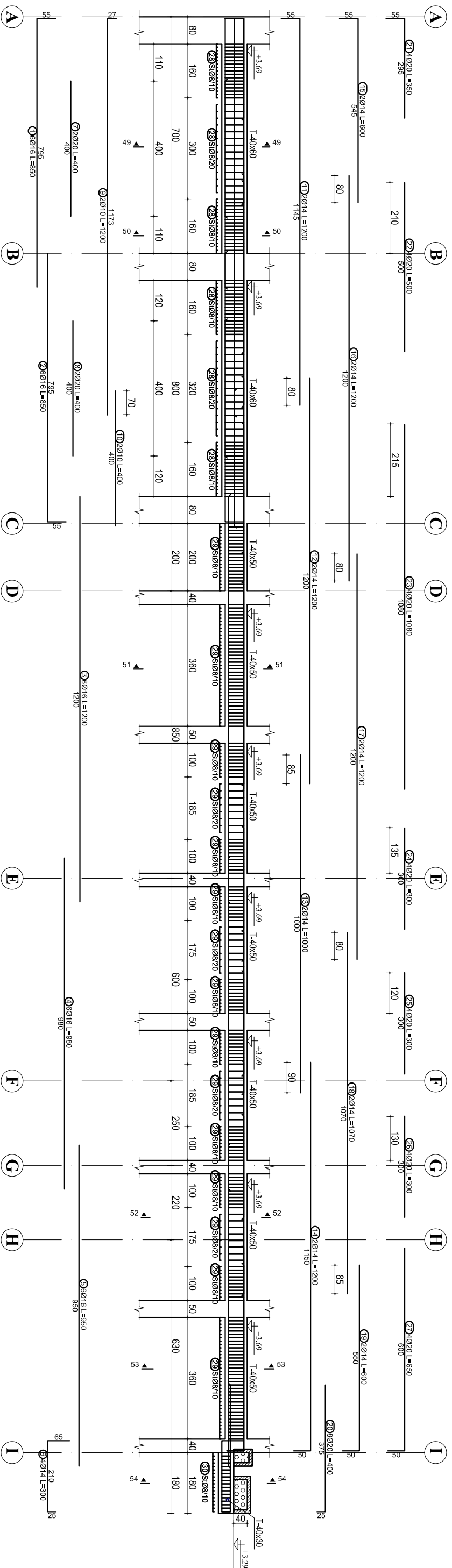
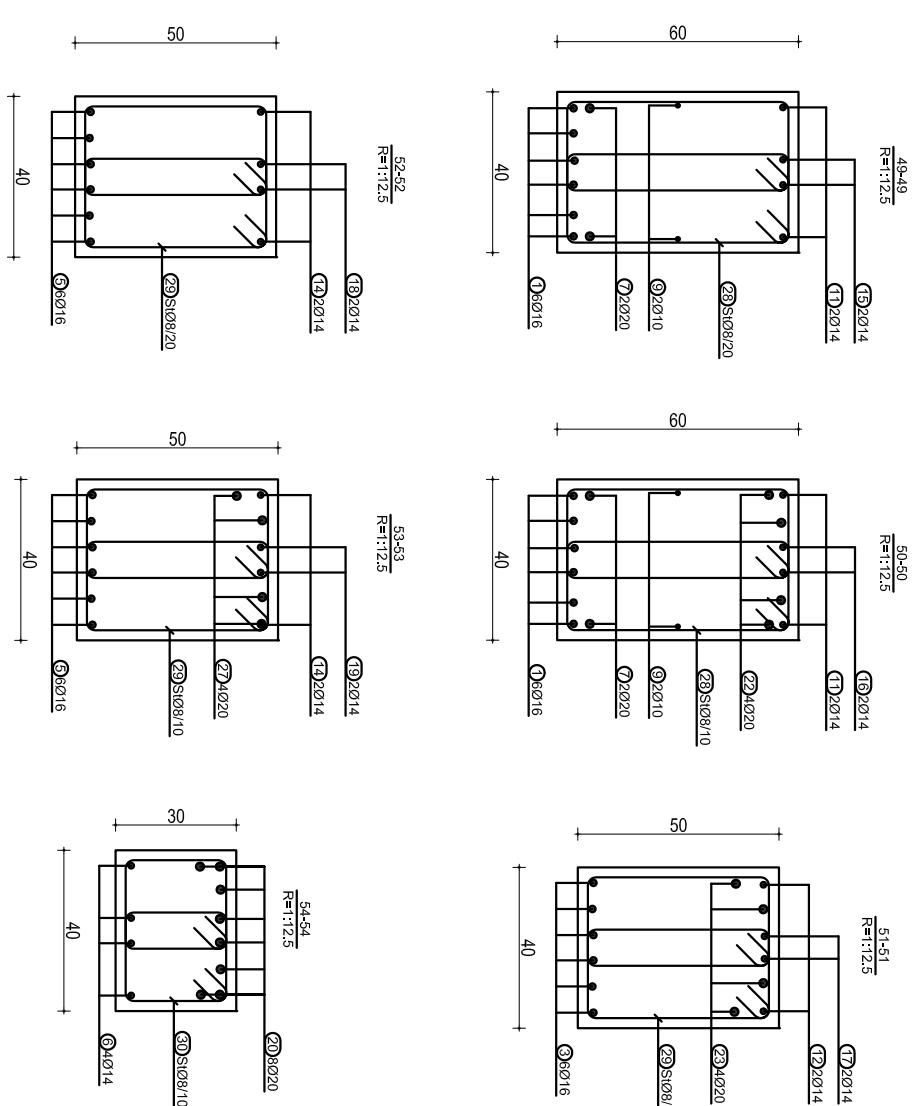


TABELA E SPECIFIKIMIT TE ARMATURES

Nr.	FORMA DHE PERMASAT [cm]	Ø	l [m]	n [coppe]	l(totale) [m]
Traut ne aksin 1, kuota +3.69 m (1 cope)					
1	795	16	8.50	6	51.00
2	795	16	8.50	6	51.00
3	1200	16	12.00	6	72.00
4	980	16	9.80	6	58.80
5	950	16	9.50	6	57.00
6	210	14	3.00	4	12.00
7	400	20	4.00	2	8.00
8	400	20	4.00	2	8.00
9	1173	10	12.00	2	24.00
10	400	10	4.00	2	8.00
11	1145	14	12.00	2	24.00
12	1200	14	12.00	2	24.00
13	1000	14	10.00	2	20.00
14	1150	14	12.00	2	24.00

15	545	14	6.00	2	12.00
16	1200	14	12.00	2	24.00
17	1200	14	12.00	2	24.00
18	1070	14	10.70	2	21.40
19	550	14	6.00	2	12.00
20	375	20	4.00	8	32.00
21	295	20	3.50	4	14.00
22	500	20	5.00	4	20.00
23	1080	20	10.80	4	43.20
24	300	20	3.00	4	12.00
25	300	20	3.00	4	12.00
26	300	20	3.00	4	12.00
27	600	20	6.50	4	26.00
28	55	8	1.70	194	329.80
29	45	8	1.50	430	645.00
30	25	8	1.10	36	39.60



SHENIME TEKNIKE:  
 BETONI: C 30/37  
 HEKUPI: S500 OSE EKUIVALENT

OBJEKTI:	49-49	R=1:12.5
ENERJITIM:	50-50	R=1:12.5
KONSTRUKTOR:	52-52	R=1:12.5
KONSTRUKTOR:	53-53	R=1:12.5
KONSTRUKTOR:	54-54	R=1:12.5
KONSTRUKTOR:	51-51	R=1:12.5
KONSTRUKTOR:	55-55	R=1:12.5
KONSTRUKTOR:	56-56	R=1:12.5
KONSTRUKTOR:	57-57	R=1:12.5
KONSTRUKTOR:	58-58	R=1:12.5
KONSTRUKTOR:	59-59	R=1:12.5
KONSTRUKTOR:	60-60	R=1:12.5
KONSTRUKTOR:	61-61	R=1:12.5
KONSTRUKTOR:	62-62	R=1:12.5
KONSTRUKTOR:	63-63	R=1:12.5
KONSTRUKTOR:	64-64	R=1:12.5
KONSTRUKTOR:	65-65	R=1:12.5
KONSTRUKTOR:	66-66	R=1:12.5
KONSTRUKTOR:	67-67	R=1:12.5
KONSTRUKTOR:	68-68	R=1:12.5
KONSTRUKTOR:	69-69	R=1:12.5
KONSTRUKTOR:	70-70	R=1:12.5
KONSTRUKTOR:	71-71	R=1:12.5
KONSTRUKTOR:	72-72	R=1:12.5
KONSTRUKTOR:	73-73	R=1:12.5
KONSTRUKTOR:	74-74	R=1:12.5
KONSTRUKTOR:	75-75	R=1:12.5
KONSTRUKTOR:	76-76	R=1:12.5
KONSTRUKTOR:	77-77	R=1:12.5
KONSTRUKTOR:	78-78	R=1:12.5
KONSTRUKTOR:	79-79	R=1:12.5
KONSTRUKTOR:	80-80	R=1:12.5
KONSTRUKTOR:	81-81	R=1:12.5
KONSTRUKTOR:	82-82	R=1:12.5
KONSTRUKTOR:	83-83	R=1:12.5
KONSTRUKTOR:	84-84	R=1:12.5
KONSTRUKTOR:	85-85	R=1:12.5
KONSTRUKTOR:	86-86	R=1:12.5
KONSTRUKTOR:	87-87	R=1:12.5
KONSTRUKTOR:	88-88	R=1:12.5
KONSTRUKTOR:	89-89	R=1:12.5
KONSTRUKTOR:	90-90	R=1:12.5
KONSTRUKTOR:	91-91	R=1:12.5
KONSTRUKTOR:	92-92	R=1:12.5
KONSTRUKTOR:	93-93	R=1:12.5
KONSTRUKTOR:	94-94	R=1:12.5
KONSTRUKTOR:	95-95	R=1:12.5
KONSTRUKTOR:	96-96	R=1:12.5
KONSTRUKTOR:	97-97	R=1:12.5
KONSTRUKTOR:	98-98	R=1:12.5
KONSTRUKTOR:	99-99	R=1:12.5
KONSTRUKTOR:	100-100	R=1:12.5
KONSTRUKTOR:	101-101	R=1:12.5
KONSTRUKTOR:	102-102	R=1:12.5
KONSTRUKTOR:	103-103	R=1:12.5
KONSTRUKTOR:	104-104	R=1:12.5
KONSTRUKTOR:	105-105	R=1:12.5
KONSTRUKTOR:	106-106	R=1:12.5
KONSTRUKTOR:	107-107	R=1:12.5
KONSTRUKTOR:	108-108	R=1:12.5
KONSTRUKTOR:	109-109	R=1:12.5
KONSTRUKTOR:	110-110	R=1:12.5
KONSTRUKTOR:	111-111	R=1:12.5
KONSTRUKTOR:	112-112	R=1:12.5
KONSTRUKTOR:	113-113	R=1:12.5
KONSTRUKTOR:	114-114	R=1:12.5
KONSTRUKTOR:	115-115	R=1:12.5
KONSTRUKTOR:	116-116	R=1:12.5
KONSTRUKTOR:	117-117	R=1:12.5
KONSTRUKTOR:	118-118	R=1:12.5
KONSTRUKTOR:	119-119	R=1:12.5
KONSTRUKTOR:	120-120	R=1:12.5
KONSTRUKTOR:	121-121	R=1:12.5
KONSTRUKTOR:	122-122	R=1:12.5
KONSTRUKTOR:	123-123	R=1:12.5
KONSTRUKTOR:	124-124	R=1:12.5
KONSTRUKTOR:	125-125	R=1:12.5
KONSTRUKTOR:	126-126	R=1:12.5
KONSTRUKTOR:	127-127	R=1:12.5
KONSTRUKTOR:	128-128	R=1:12.5
KONSTRUKTOR:	129-129	R=1:12.5
KONSTRUKTOR:	130-130	R=1:12.5
KONSTRUKTOR:	131-131	R=1:12.5
KONSTRUKTOR:	132-132	R=1:12.5
KONSTRUKTOR:	133-133	R=1:12.5
KONSTRUKTOR:	134-134	R=1:12.5
KONSTRUKTOR:	135-135	R=1:12.5
KONSTRUKTOR:	136-136	R=1:12.5
KONSTRUKTOR:	137-137	R=1:12.5
KONSTRUKTOR:	138-138	R=1:12.5
KONSTRUKTOR:	139-139	R=1:12.5
KONSTRUKTOR:	140-140	R=1:12.5
KONSTRUKTOR:	141-141	R=1:12.5
KONSTRUKTOR:	142-142	R=1:12.5
KONSTRUKTOR:	143-143	R=1:12.5
KONSTRUKTOR:	144-144	R=1:12.5
KONSTRUKTOR:	145-145	R=1:12.5
KONSTRUKTOR:	146-146	R=1:12.5
KONSTRUKTOR:	147-147	R=1:12.5
KONSTRUKTOR:	148-148	R=1:12.5
KONSTRUKTOR:	149-149	R=1:12.5
KONSTRUKTOR:	150-150	R=1:12.5

# ARMIMI I TRAUT MBI AKSIN 2(C-H), KUOTA +3.69 m

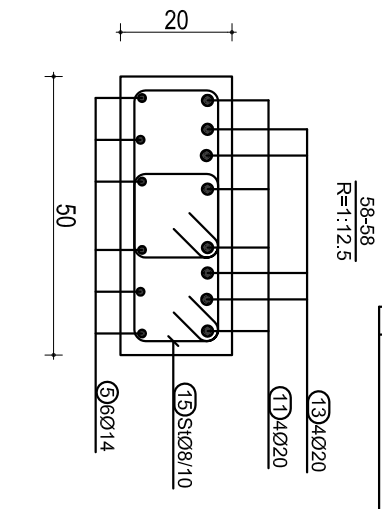
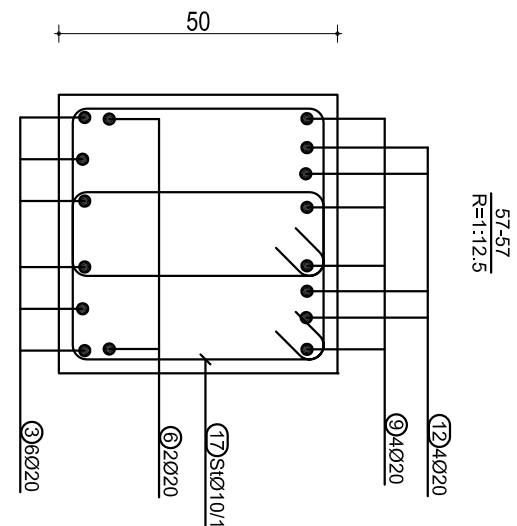
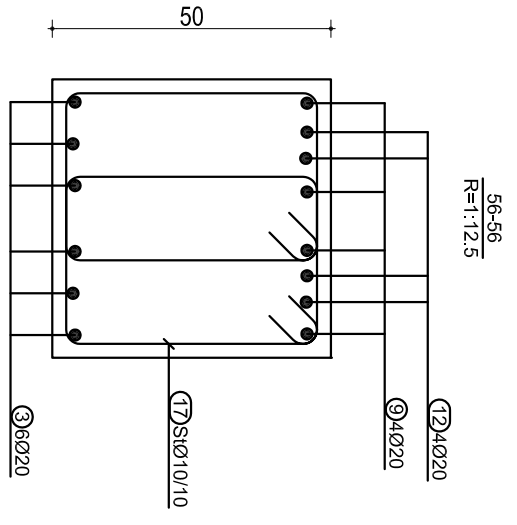
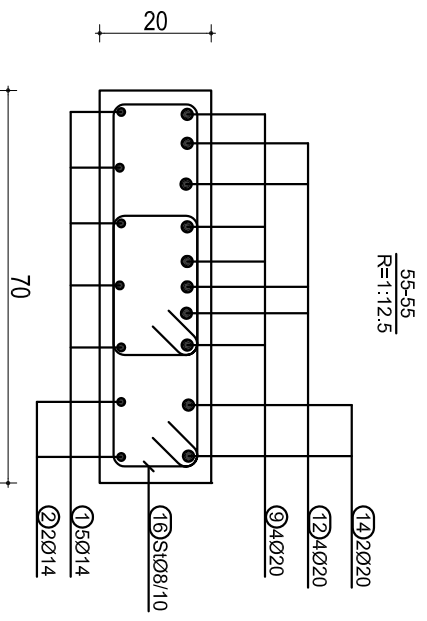
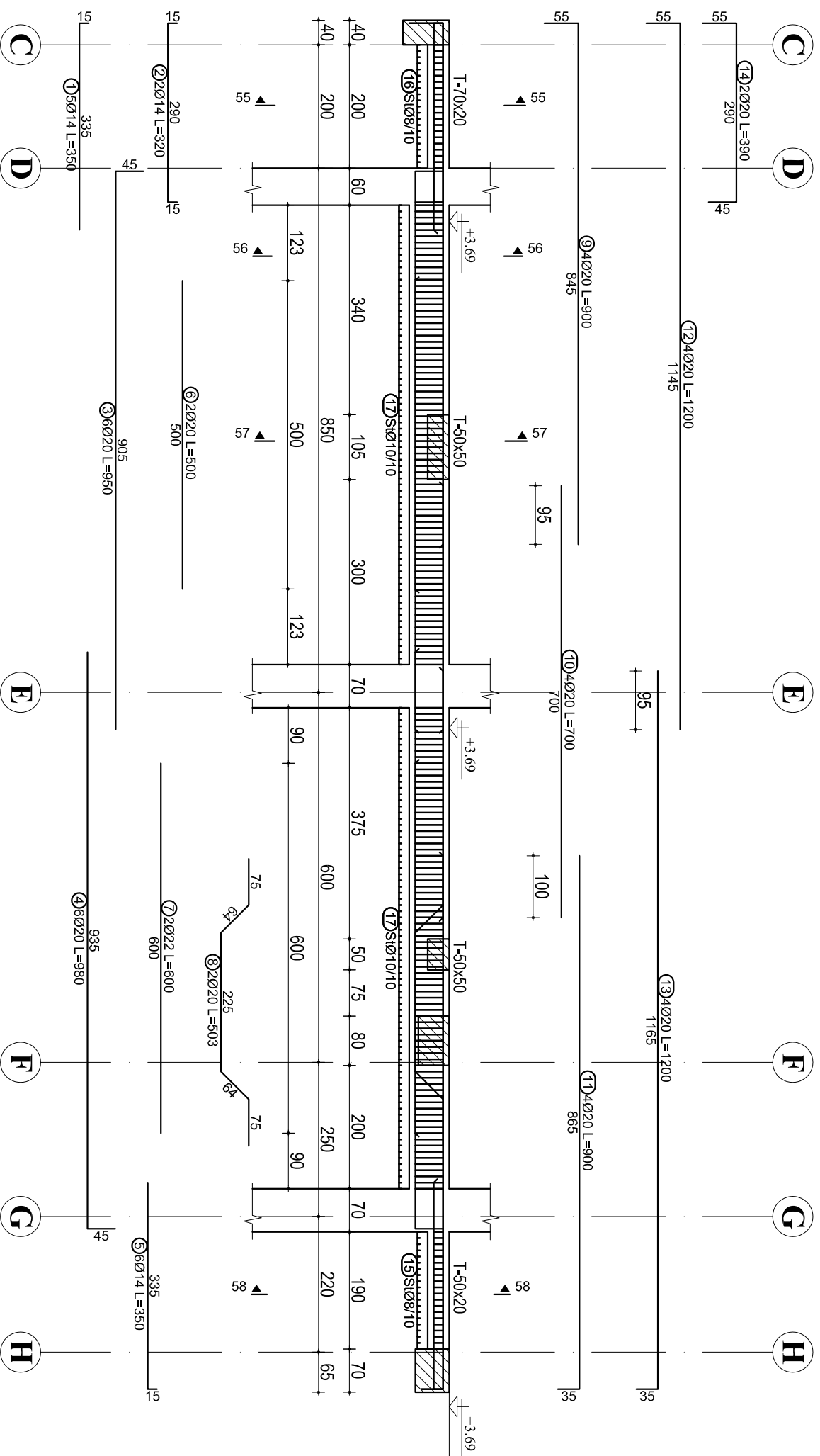


TABELA E SPECIFIKIMIT TE ARMATURES						
Nr.	FORMA DHE PERMASAT [cm]	Ø	l [m]	n [copie]	l(totale) [m]	
Trau mbi aksin 2(C-H), kuota +3.69 m (1 copje)						
1	15 335	14	3.50	5	17.50	
2	15 290	14	3.20	2	6.40	
3	45 905	20	9.50	6	57.00	
4	935	20	9.80	6	58.80	
5	335	14	3.50	6	21.00	
6	500	20	5.00	2	10.00	
7	600	22	6.00	2	12.00	
8	75 45 15 225 75 45 15	20	5.03	2	10.06	
9	845	20	9.00	4	36.00	
10	700	20	7.00	4	28.00	
11	865	20	9.00	4	36.00	
12	1145	20	12.00	4	48.00	
13	1165	20	12.00	4	48.00	
14	290 45	20	3.90	2	7.80	
15	30 15 30 45 15	8	1.06	40	42.40	
16	45 15 45 60 15	8	1.36	42	57.12	
17	45 60 45	10	1.66	308	511.28	

OBJEKTI:	
EMERTI: ARMIMI I TRAUVE, KUOTA +3.69 m	K:15102
KONSTRUKTOR	<b>DHIMITER PAPA</b>
KONSTRUKTOR	
KONSTRUKTOR	
	Ni. Fieles
	<b>K-128</b>
	Dl.

SHENIME TEKNIKE:  
 BETONI: C 30/37  
 HEKUPI: S500 OSE EKVIVALENT







# ARMIMI I TRAUT NE AKSIN 3, KUOTA +3.69 m

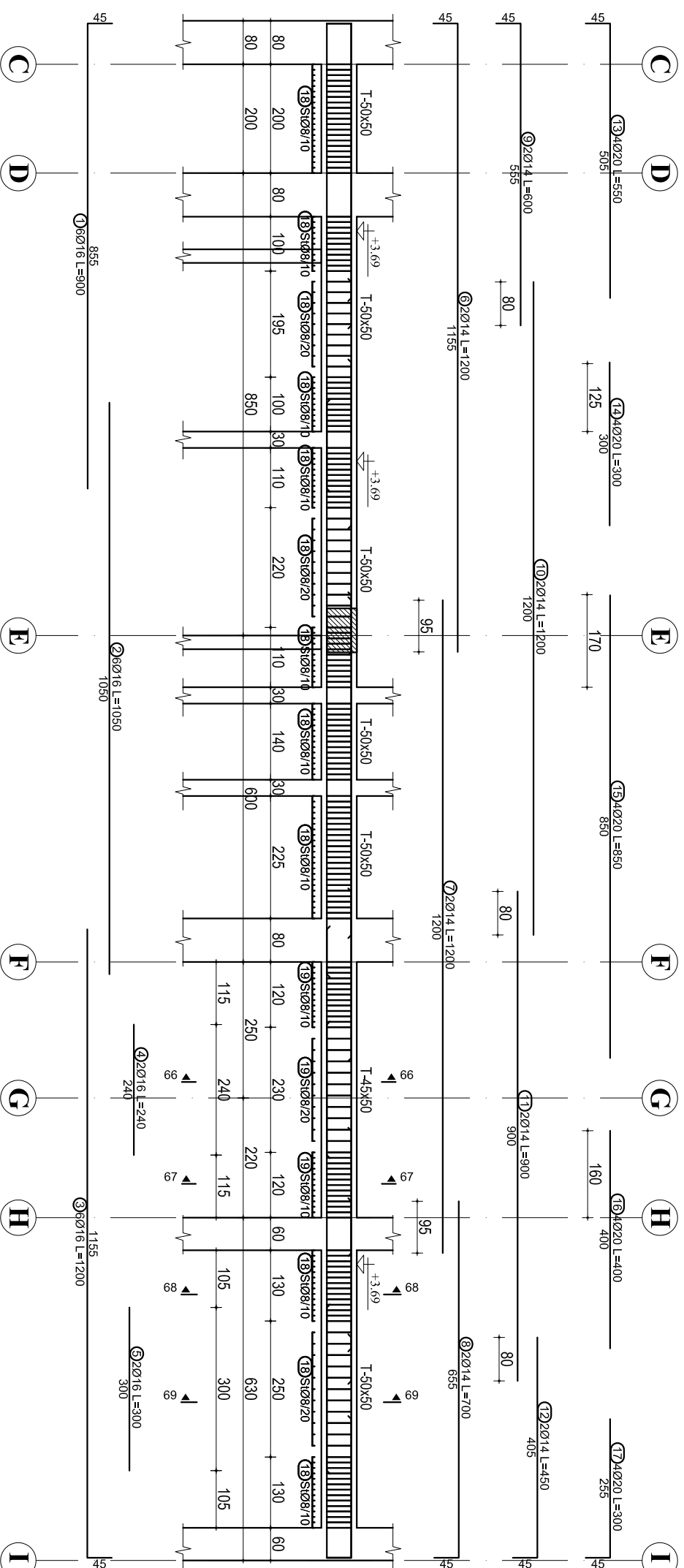
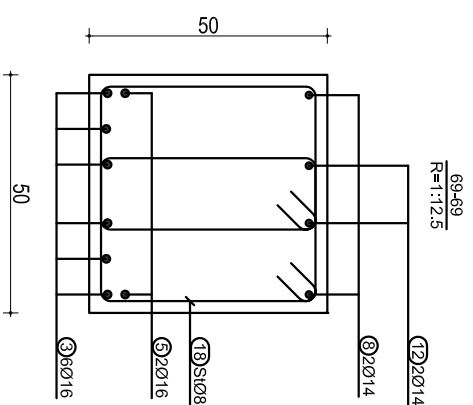
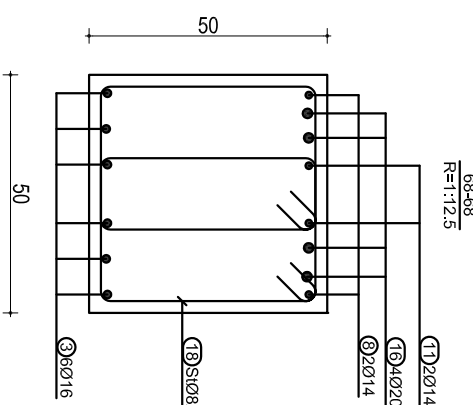
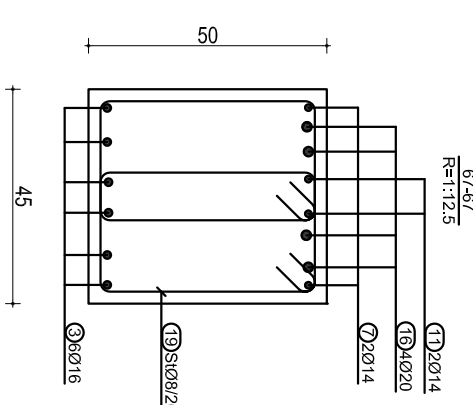
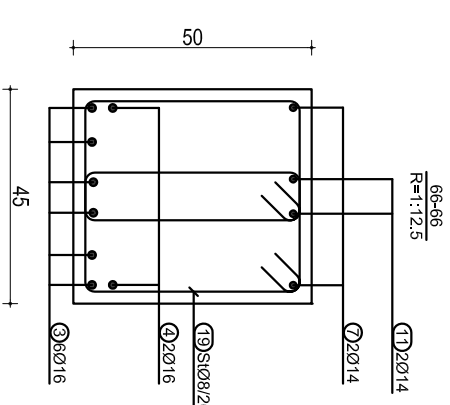


TABELA E SPECIFIKIMIT TE ARMATURES

Nr.	FORMA DHE PERMASAT [cm]	Ø	l [m]	n [copel]	l(totale) [m]
Trau ne aksin 3, kuota +3.69 m (1 copel)					
1	855	16	9.00	6	54.00
2	1050	16	10.50	6	63.00
3	1155	16	12.00	6	72.00
4	240	16	2.40	2	4.80
5	300	16	3.00	2	6.00
6	1155	14	12.00	2	24.00
7	1200	14	12.00	2	24.00
8	655	14	7.00	2	14.00

9	555	14	6.00	2	12.00
10	1200	14	12.00	2	24.00
11	900	14	9.00	2	18.00
12	405	14	4.50	2	9.00
13	505	20	5.50	4	22.00
14	300	20	3.00	4	12.00
15	850	20	8.50	4	34.00
16	400	20	4.00	4	16.00
17	255	20	3.00	4	12.00
18	45	8	1.66	326	541.16
19	45	8	1.56	72	112.32



SHENIME TEKNIKE:  
 BETONI: C 30/37  
 HEKURI: S500 OSE EKUIVALENT

OBJEKTI:	DHIMITER PAPA	
EMERTIMI:	ARMIMI I TRAREVE, KUOTA +3.69 m	K:15102
KONSTRUKTOR:		Ni. Fliers
KONSTRUKTOR:		K-131
KONSTRUKTOR:		Dl.

# ARMIMI I TRAUT NE AKSIN 4(A-D), KUOTA +3.69 m

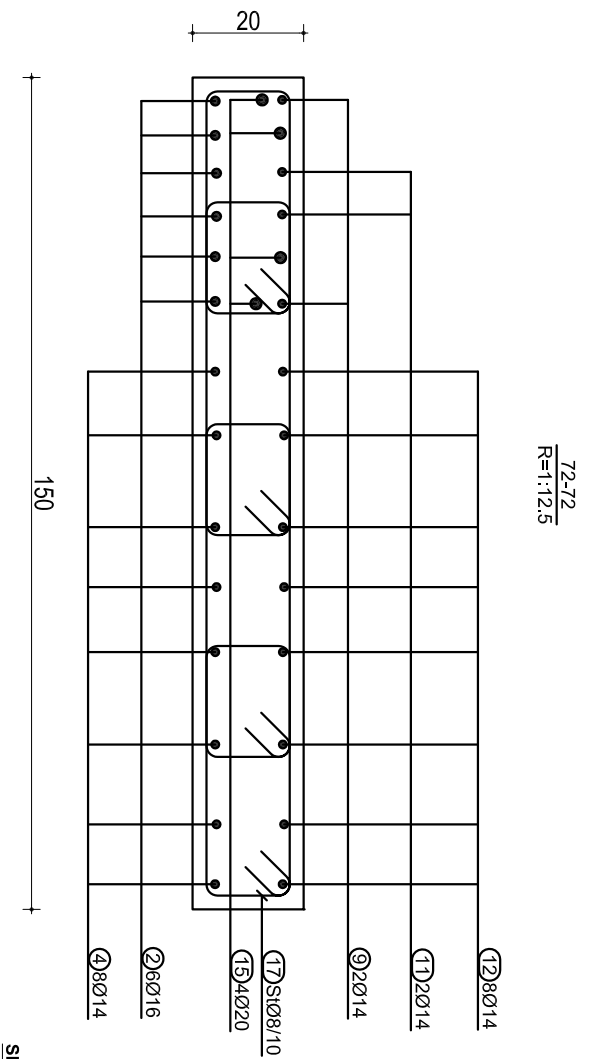
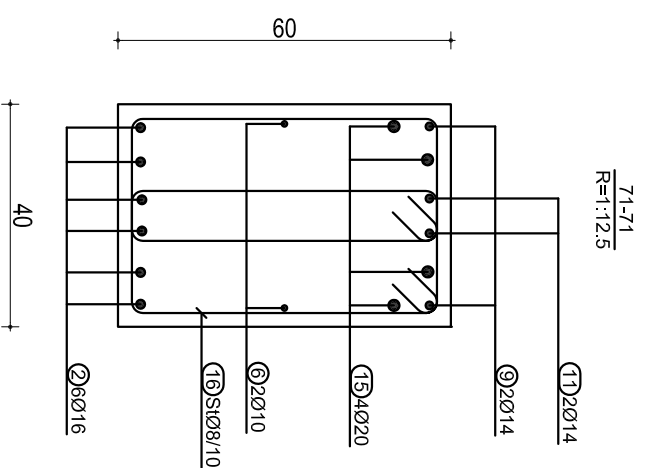
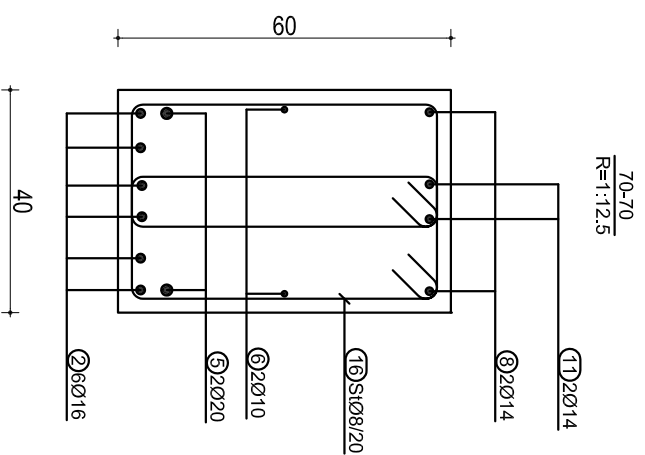
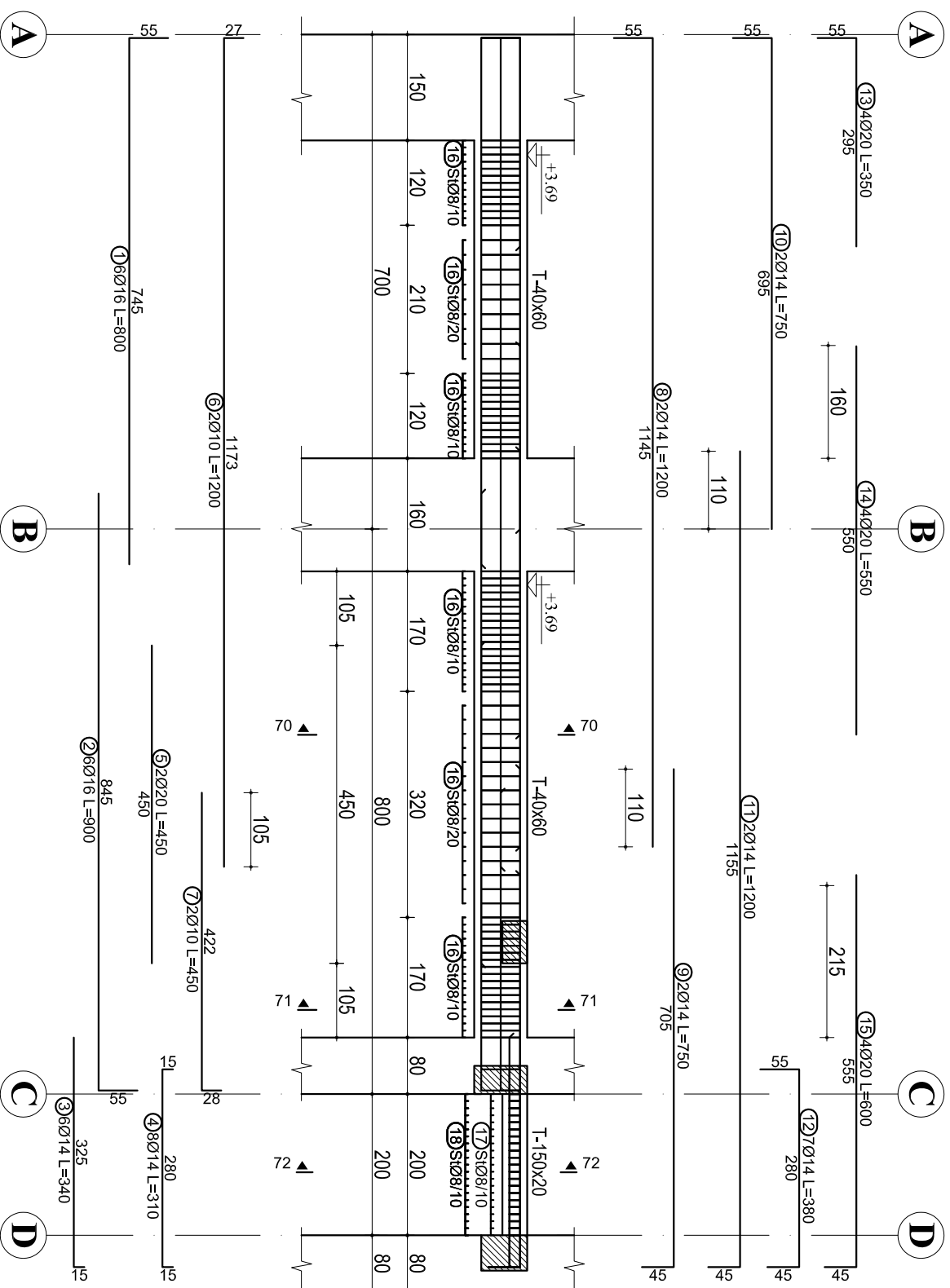


TABELA E SPECIFIKIMIT TE ARMATURES

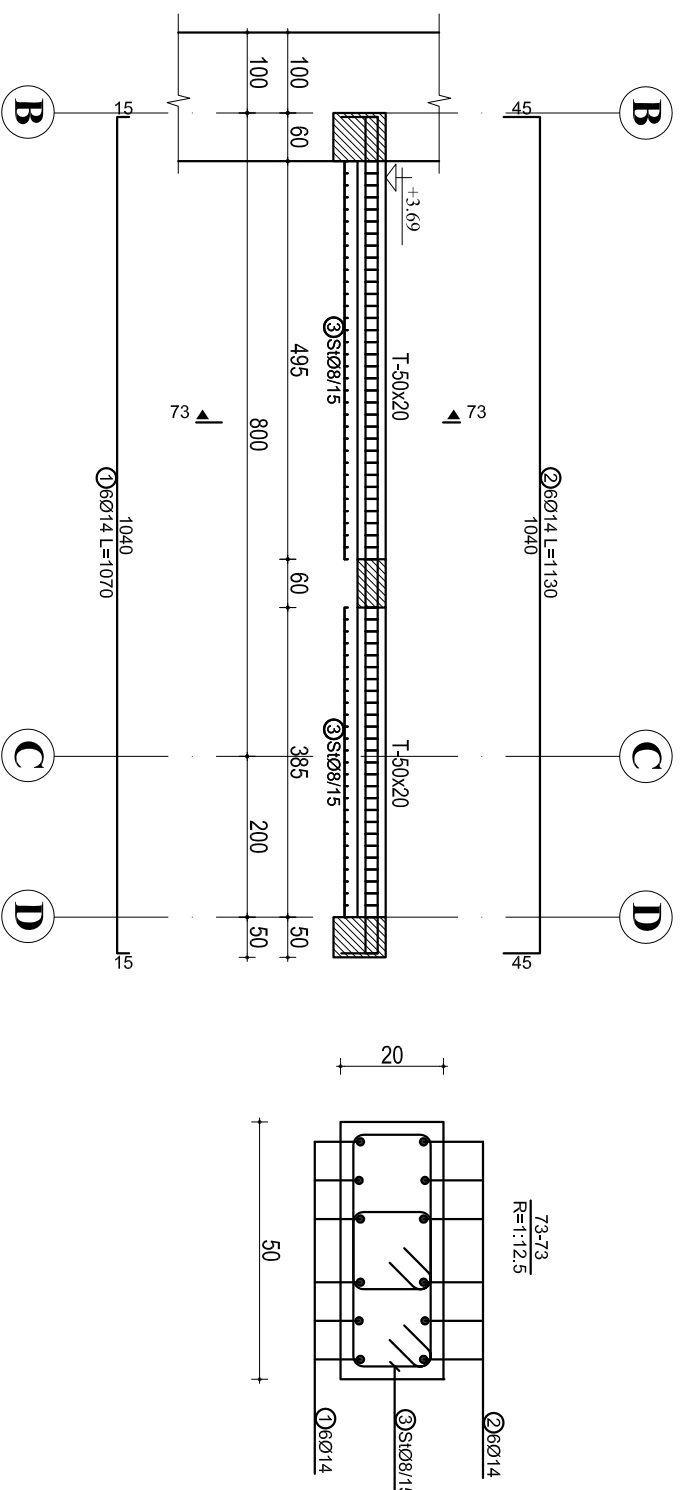
Nr.	FORMA DHE PERMASAT [cm]	Ø	l [m]	n [copes]	l(totale) [m]
Trau ne aksin 4(A-D), kuota +3.69 m (1 cope)					
1	55 745	16	8.00	6	48.00
2	845	16	9.00	6	54.00
3	325	14	3.40	6	20.40
4	15 280	14	3.10	8	24.80
5	450	20	4.50	2	9.00
6	27 1173	10	12.00	2	24.00
7	28 422	10	4.50	2	9.00
8	55 1145	14	12.00	2	24.00
9	705	14	7.50	2	15.00
10	55 695	14	7.50	2	15.00
11	45 1155	14	12.00	2	24.00
12	55 280	14	3.80	7	26.60
13	55 295	20	3.50	4	14.00
14	550	20	5.50	4	22.00
15	555	20	6.00	4	24.00
16	55 22 55	8	1.70	172	292.40
17	55 145	8	3.36	21	70.56
18	15 20 15	8	0.86	63	54.18

ORJEKTI:

ENERJITIM:	ARMIMI TRAREVE, KUOTA +3.69 m
KONSTRUKTOR:	DHIMITER PAPA
KONSTRUKTOR:	K.15102
KONSTRUKTOR:	Ni. Fletis
KONSTRUKTOR:	K-132
Dl.	

SHENIME TEKNIKE:  
 BETONI: C 30/37  
 HEKURI: S500 OSE EKVIVALENT

## ARMIMI I TRAUT MBI AKSIN 5(B-D), KUOTA +3.69 m



## ARMIMI I TRARET NE AKSET 5(B-D) DHE 6(B-D), KUOTA +3.69 m

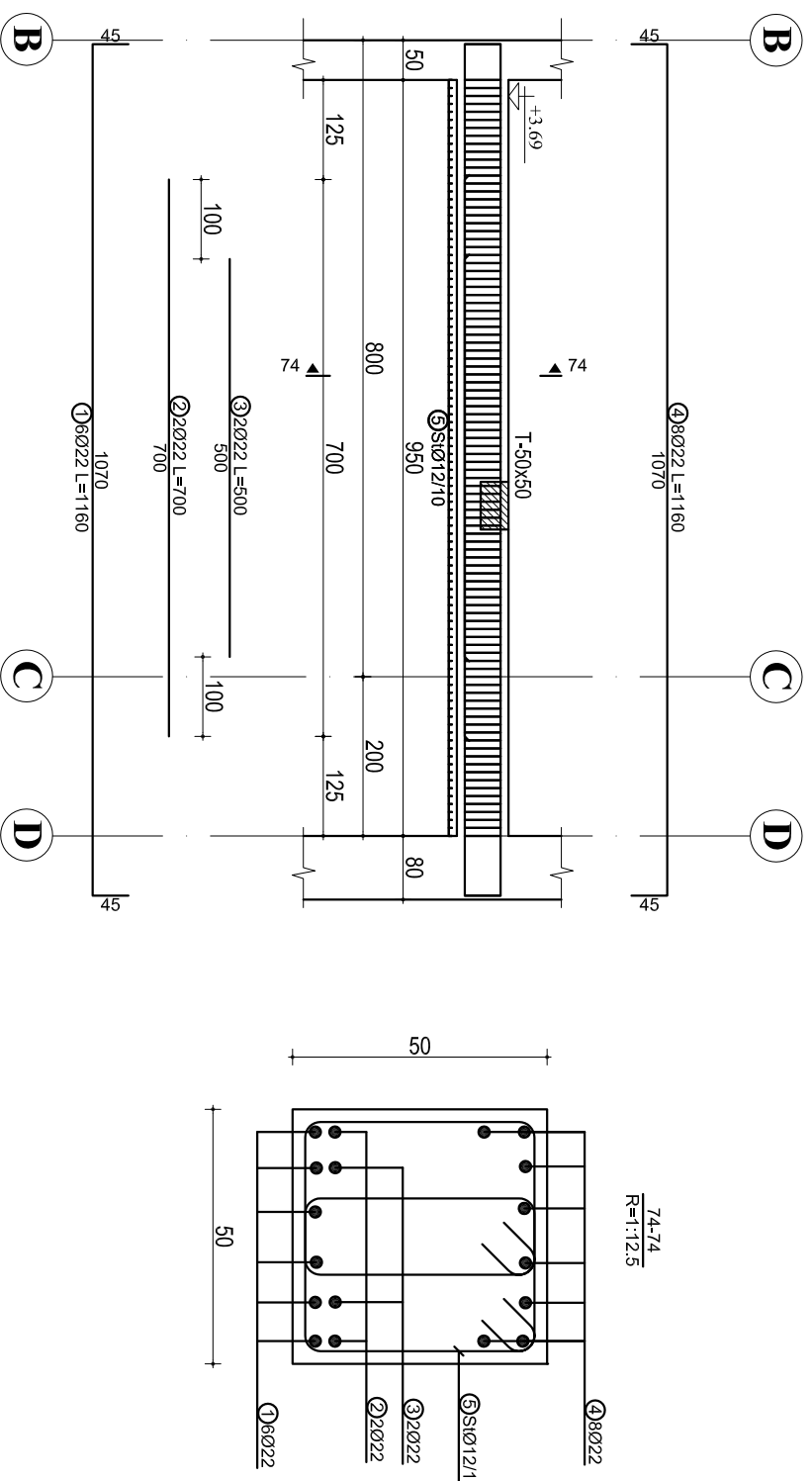


TABELA E SPECIFIKIMIT TE ARMATURES

Nr.	FORMA DHE PERMASAT [cm]	Ø	l [m]	n [cope]	l(totale) [m]
Trau mbi aksin 5(B-D), kuota +3.69 m (1 cope)					
1	15 1040	14	10.70	6	64.20
2	45 1040	14	11.30	6	67.80
3	15 30 30	8	1.06	122	129.32

Traret ne akset 5(B-D) dhe 6(B-D), kuota +3.69 m (1 cope)

1	45 1070	22	11.60	6	69.60
2	700	22	7.00	2	14.00
3	500	22	5.00	2	10.00
4	45 1070	22	11.60	8	92.80
5	45 45 30 45	12	1.70	192	326.40

OBJEKTI:

EMERTIMI: ARMIMI I TRAREVE, KUOTA +3.69 m

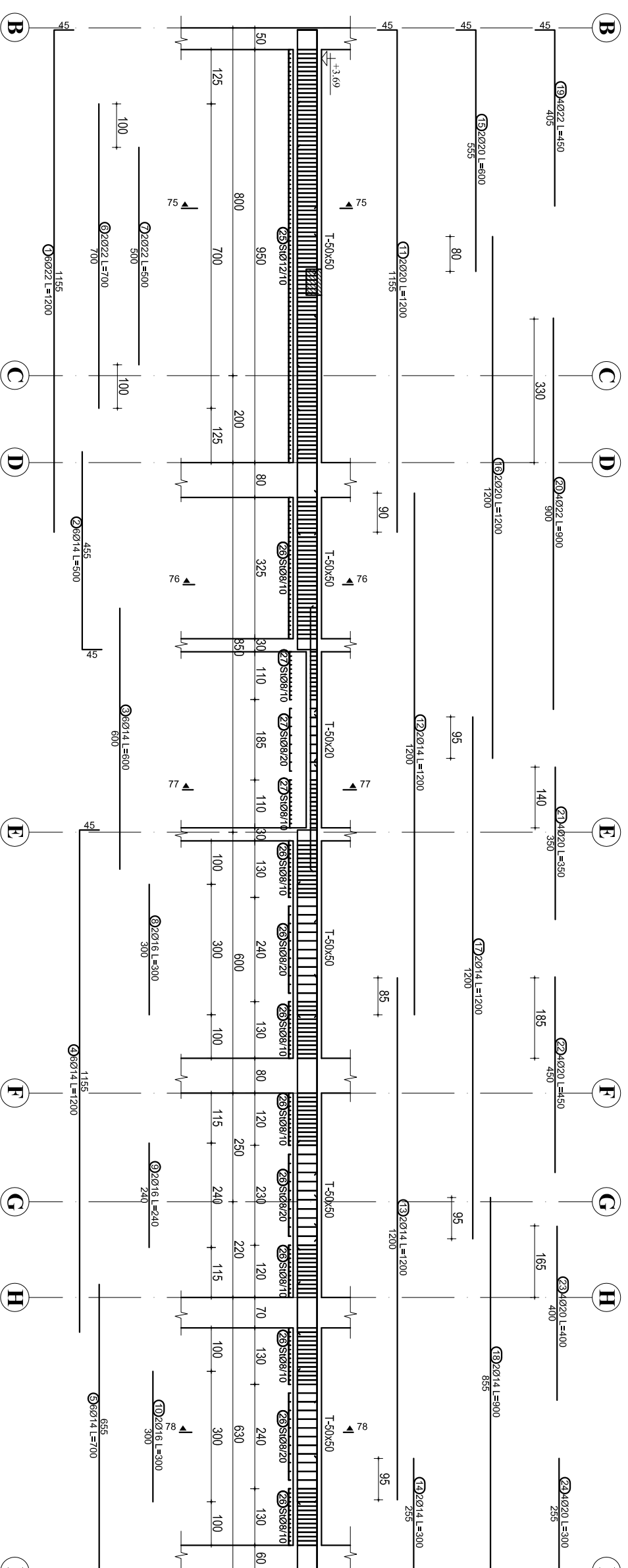
KONSTRUKTOR: **DHIMITER PAPA** K.15/10/2

SHENIME TEKNIKE: Nf. Fieles

BETONI: C 30/37 K-133

HEKURI: S500 OSE EKVIVALENT DL.

# ARMIMI I TRAUT NE AKSIN 7, KUOTA +3.69 m



75-75  
R=1:12.5

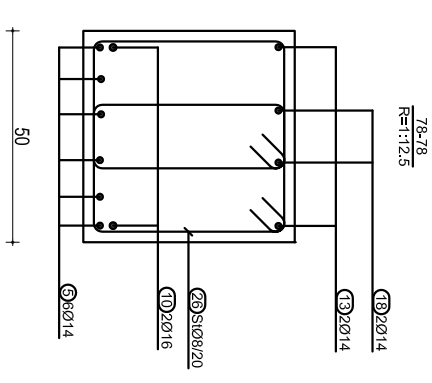
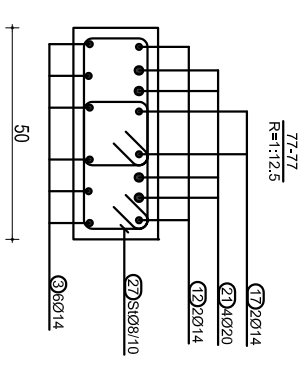
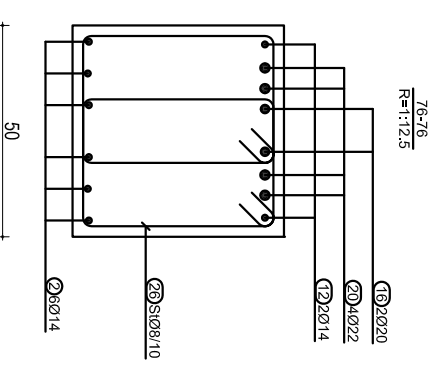
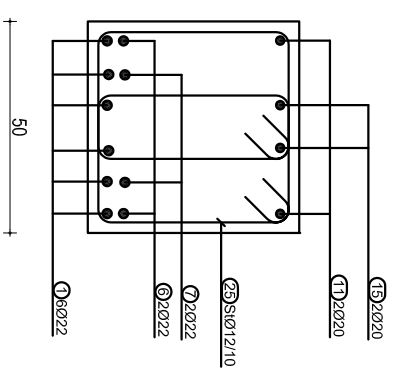


TABELA E SPECIFIKIMIT TE ARMATURES

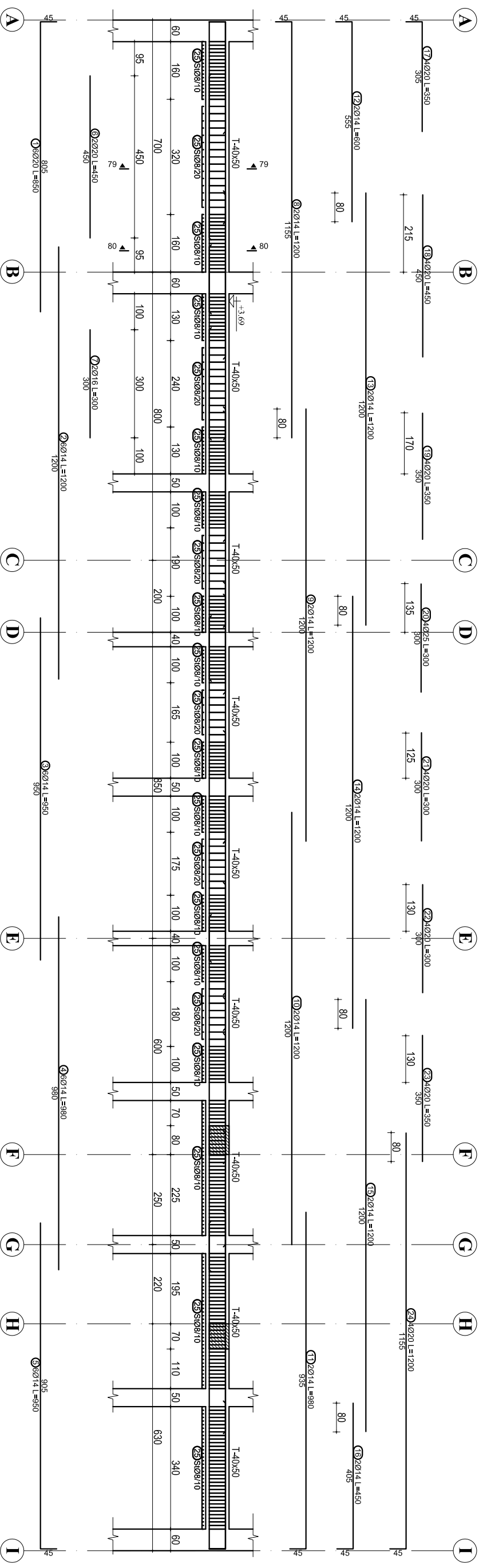
Nr.	FORMA DHE PERMASAT [cm]	Ø	l [m]	n [cope]	(kotalë) [m]
Trau ne aksin 7, kuota +3.69 m (1 cope)					
1	1155	22	12.00	6	72.00
2	455	14	5.00	6	30.00
3	600	14	6.00	6	36.00
4	1155	14	12.00	6	72.00
5	655	14	7.00	6	42.00
6	700	22	7.00	2	14.00
7	500	22	5.00	2	10.00
8	300	16	3.00	2	6.00
9	240	16	2.40	2	4.80
10	300	16	3.00	2	6.00
11	1155	20	12.00	2	24.00
12	1200	14	12.00	2	24.00
13	1200	14	12.00	2	24.00
14	255	14	3.00	2	6.00

15	555	20	6.00	2	12.00	15	30	60	8	1.06	64	67.84
16	1200	20	12.00	2	24.00	16	45	90	8	1.66	294	488.04
17	1200	14	12.00	2	24.00	17	45	90	8	1.66	294	488.04
18	855	14	9.00	2	18.00	18	45	90	8	1.66	294	488.04
19	405	22	4.50	4	18.00	19	45	90	8	1.66	294	488.04
20	900	22	9.00	4	36.00	20	45	90	8	1.66	294	488.04
21	350	20	3.50	4	14.00	21	45	90	8	1.66	294	488.04
22	450	20	4.50	4	18.00	22	45	90	8	1.66	294	488.04
23	400	20	4.00	4	16.00	23	45	90	8	1.66	294	488.04
24	255	20	3.00	4	12.00	24	45	90	8	1.66	294	488.04
25	45	12	1.70	192	326.40	25	45	90	8	1.66	294	488.04
26	45	8	1.66	294	488.04	26	45	90	8	1.66	294	488.04
27	30	8	1.06	64	67.84	27	45	90	8	1.66	294	488.04

SHENIME TEKNIKE:  
BETONI: C 30/37  
HEKURI: S500 OSE EKUIVALENT

OBJEKTI:	
EMERTIMI:	ARMIMI TRAREVE KUOTA +3.69 m
KONSTRUKTOR:	DHIMITER PAPA
Nr. Files:	K-134
Dl.	

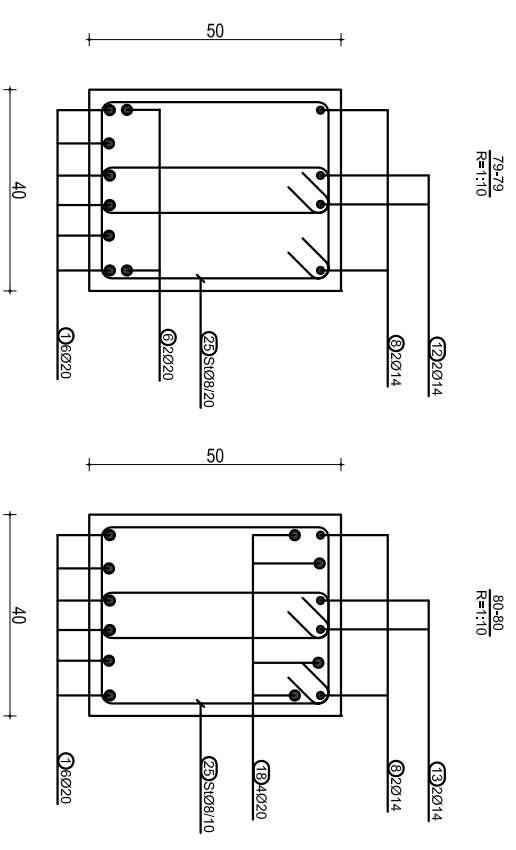
# ARMIMI I TRAUT NE AKSIN 8, KUOTA +3.69 m



**TABELA E SPECIFIKIMIT TE ARMATURES**

Nr.	FORMA DHE PERMASAT [cm]	Ø	l [m]	n [copel]	l(totale) [m]
Trau ne aksin 8, kuota +3.69 m (1 cope)					
1	45	20	8.50	6	51.00
2	805	14	12.00	6	72.00
3	950	14	9.50	6	57.00
4	980	14	9.80	6	58.80
5	905	14	9.50	6	57.00
6	450	20	4.50	2	9.00
7	300	16	3.00	2	6.00
8	45	14	12.00	2	24.00
9	1200	14	12.00	2	24.00
10	1200	14	12.00	2	24.00
11	935	14	9.80	2	19.60

12	555	14	6.00	2	12.00
13	1200	14	12.00	2	24.00
14	1200	14	12.00	2	24.00
15	1200	14	12.00	2	24.00
16	405	14	4.50	2	9.00
17	305	20	3.50	4	14.00
18	450	20	4.50	4	18.00
19	350	20	3.50	4	14.00
20	300	25	3.00	4	12.00
21	300	20	3.00	4	12.00
22	300	20	3.00	4	12.00
23	350	20	3.50	4	14.00
24	1155	20	12.00	4	48.00
25	45	8	1.50	636	954.00



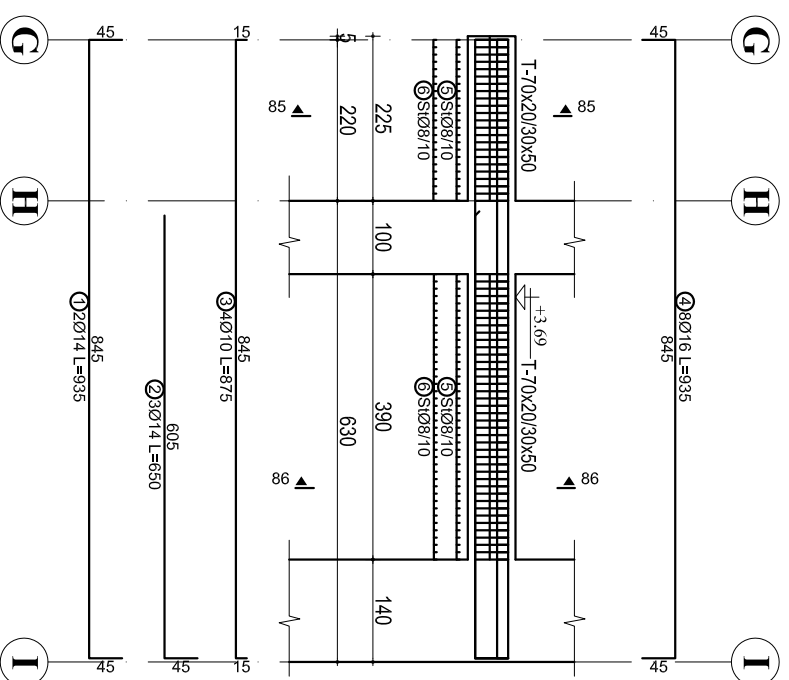
**SHENIME TEKNIKE:**  
**BETONI: C 30/37**  
**HEKURI: S500 OSE EKUIVALENT**

OBJEKTI:	
EMERTIMI: ARMIMI I TRAVEVE, KUOTA +3.69 m	
KONSTRUKTOR	DHIMITER PAPA
KONSTRUKTOR	
KONSTRUKTOR	
	Ni. Fletis
	K-135
	Dl.

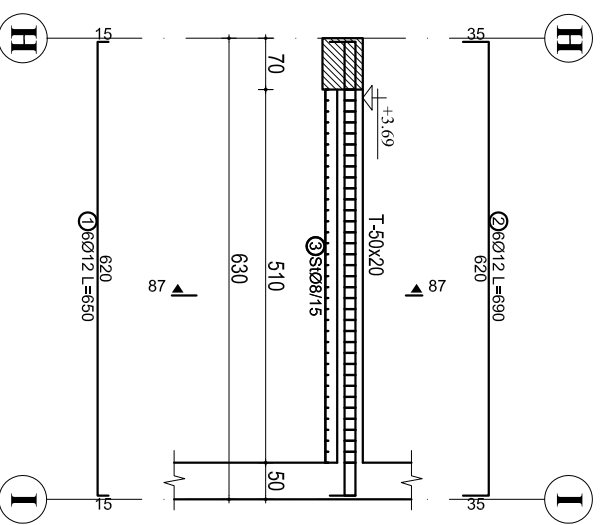




**ARMIMI I TRAREVE NE DHE NEN  
AKSIN 6(H-I), KUOTA +3.69 m**



**ARMIMI I TRAUT NEN AKSIN 7(H-I),  
KUOTA +3.69 m**



**ARMIMI I BREZIT NEN AKSIN H(5-6),  
KUOTA +3.69 m**

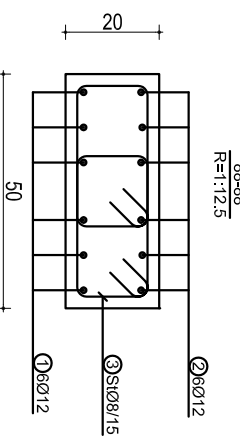
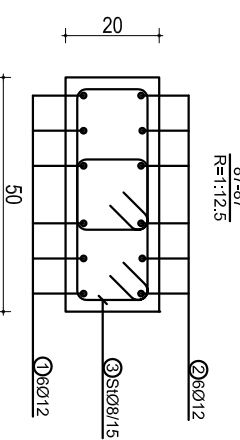
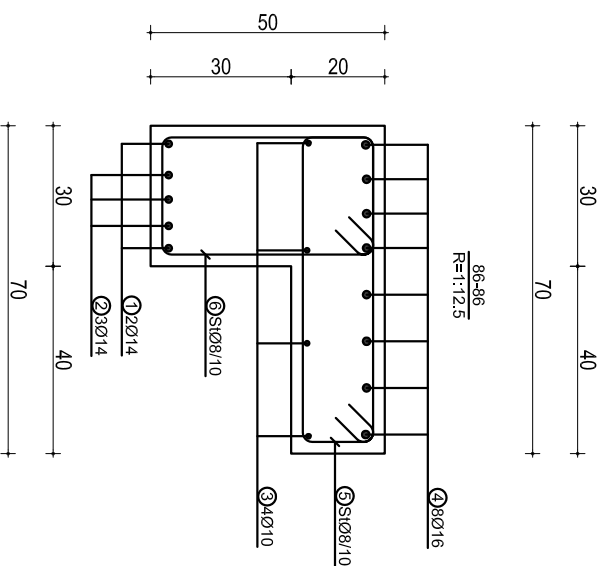
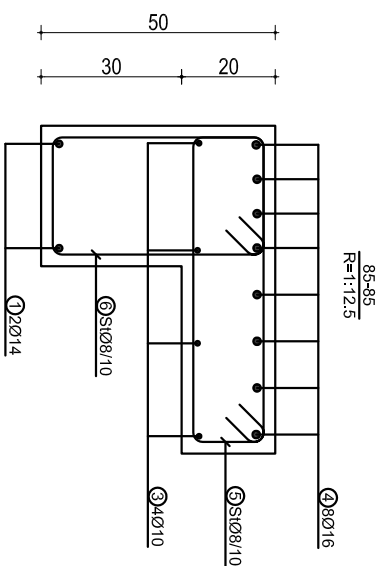
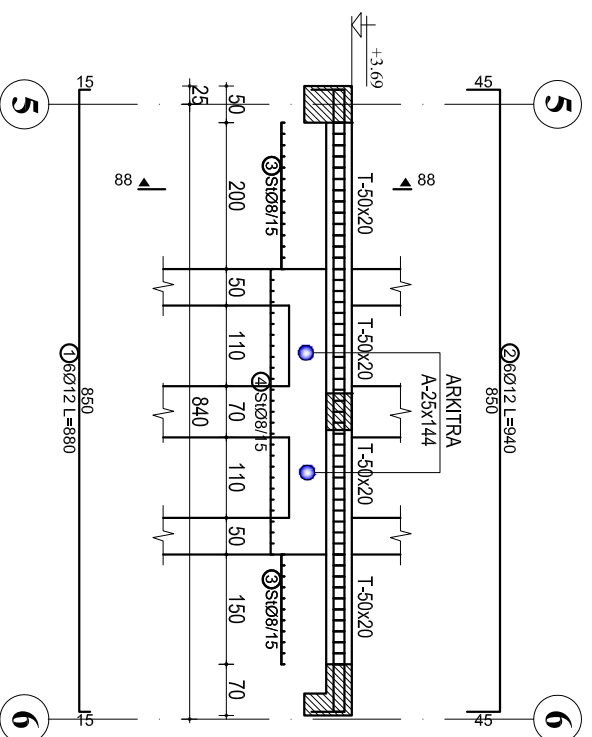


TABELA E SPECIFIKIMIT TE ARMATURES

Nr.	FORMA DHE PERMASAT [cm]	Ø	l [m]	n [cope]	l(totale) [m]
Traret ne dhe nen aksin 6(H-I), kuota +3.69 m (1 cope)					
1	45 845	14	9.35	2	18.70
2	45 605	14	6.50	3	19.50
3	15 845	10	8.75	4	35.00
4	45 845	16	9.35	8	74.80
5	15 65 65	8	1.76	63	110.88
6	45 25 45	8	1.56	63	98.28
Traut nen aksin 7(H-I) m kuota +3.69 m (1 cope)					
1	15 620	12	6.50	6	39.00
2	35 620 35	12	6.90	6	41.40
3	30 15 30	8	1.06	70	74.20
Brezit nen aksin H(5-6), kuota +3.69 m (1 cope)					
1	15 850	12	8.80	6	52.80
2	45 850	12	9.40	6	56.40
3	30 15 30	8	1.06	50	53.00
4	45 15 45	8	1.05	27	28.35

SHENIME TEKNIKE:  
BETONI: C 30/37  
HEKURI: S500 OSE EKUIVALENT

OBJEKTI:	EMERTIMI: ARMIMI I TRAREVE, KUOTA +3.69 m		
KONSTRUKTOR	DHIMITER PAPA	K.15/10/2	
KONSTRUKTOR			Ni. Fieles
KONSTRUKTOR			K-137
			Dl.

# TABELA PERMBLEDHESHE E ARMATURES

## TABELA PERMBLEDHESHE E ARMATURES

Ø [mm]	l [m]	PESHA NJESI [kg/m]	PESHA [kg]
Traret ne kuoten +3.69 m			
8	11099.39	0.40	4384.26
10	4963.20	0.62	3062.29
12	3146.80	0.89	2794.36
14	5001.13	1.21	6041.37
16	1958.78	1.58	3090.95
20	2744.66	2.47	6768.33
22	2379.75	2.98	7101.17
25	96.00	3.85	369.89
TOTAL			33612.63

OBJEKTI:

EMERTIMI: TABELA PERMBLEDHESHE E ARMATURES

KONSTRUKTOR

**DHIMITER PAPA**

K.15/102

KONSTRUKTOR

M. Fletis

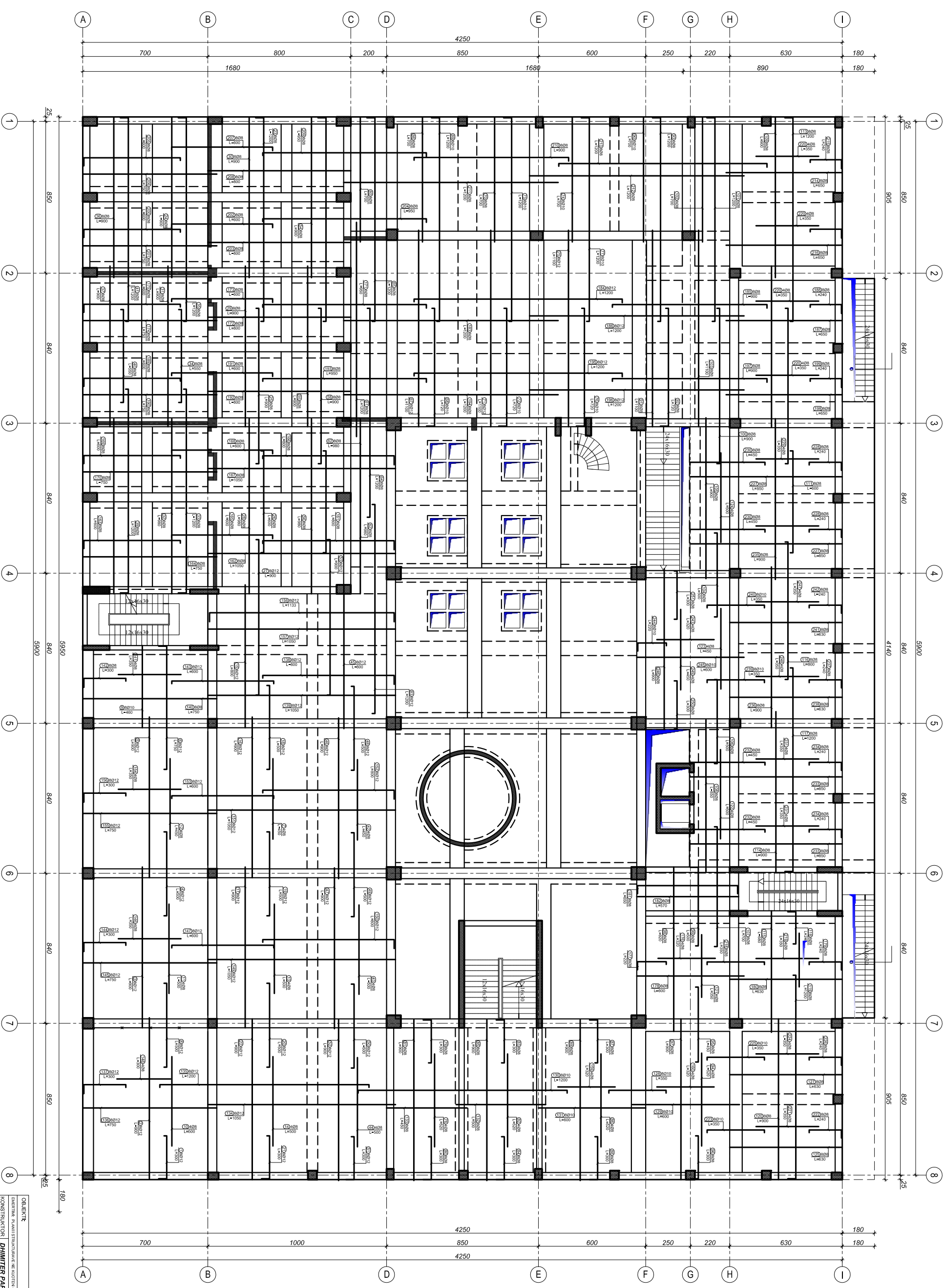
KONSTRUKTOR

**K-138**

Dl.



# PLANI I STRUKTURAVE NE KUOTEN +7.53 m ARMIMI I SOLETES



Mur dhe 20 cm, lmbjele nga kuota +7.53 m deri ne kuoten +11.27 m  
Kollona dhe 50x50, te mbijeta nga kuota +7.53 m deri ne kuoten +11.27 m

**SHENIME TEKNIKE:**  
**BETONI: C 32/40**  
**HEKURI: S500 OSE EKUIVALENT**

OBJEKTI:	QENDRIME SHANIT STRUKTURORAVE NE KUOTEN +7.53 m - ARMIMI I SOLETES
KONSTRUKTORI:	<b>DIJMI TER PAPA</b>
KONSTRUKTORI:	K.15/102
Nr. Filies:	<b>K-140</b>
Dr.:	Dr.