

**Porositi:**



*BASHKIA MALSI E MADHE*

**Projektoi:**



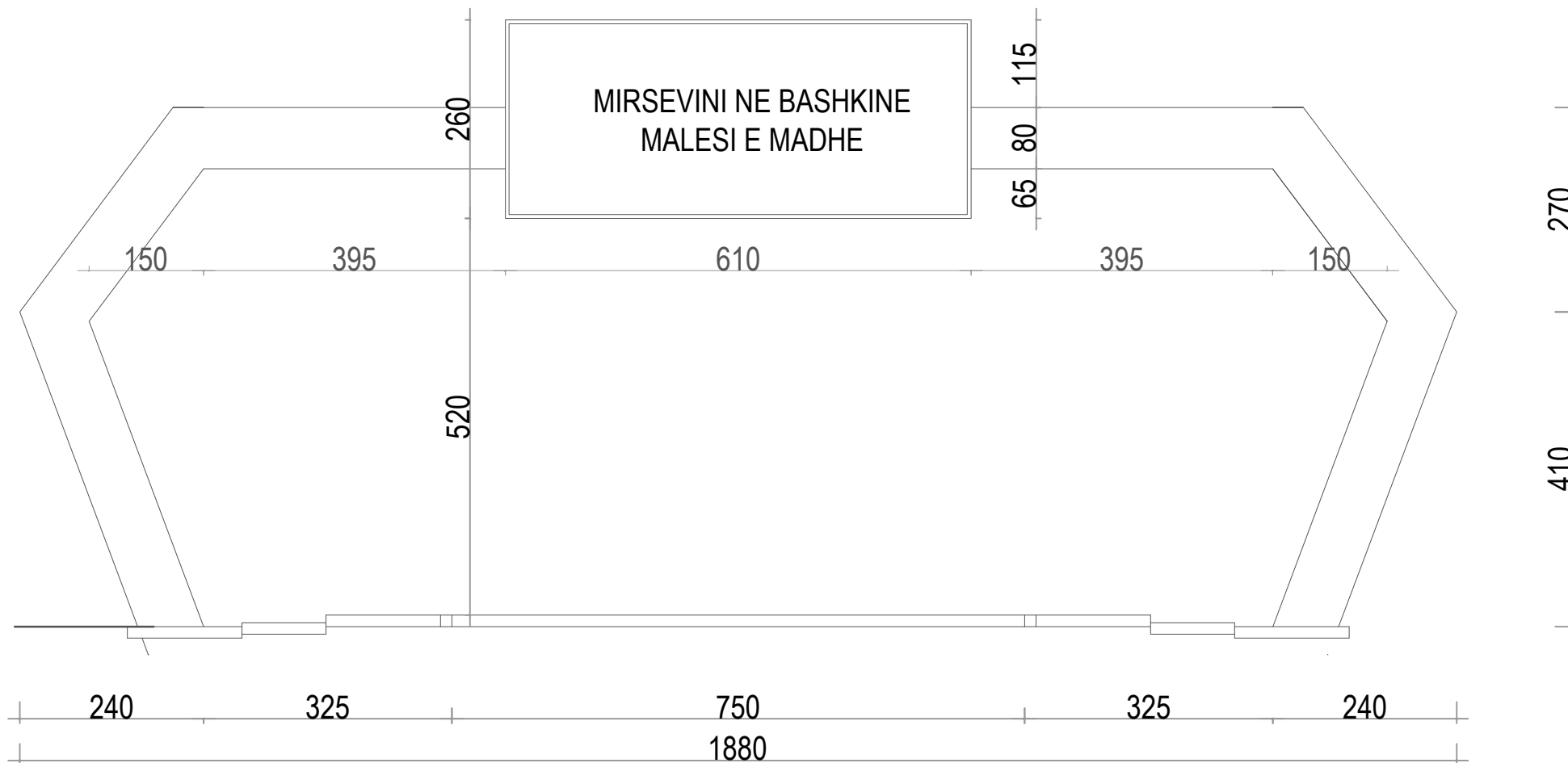
Administrator - Nikolle PALUCA


**Objekti:**

***"INSTALIMI I TABELAVE ELEKTRONIKE"***

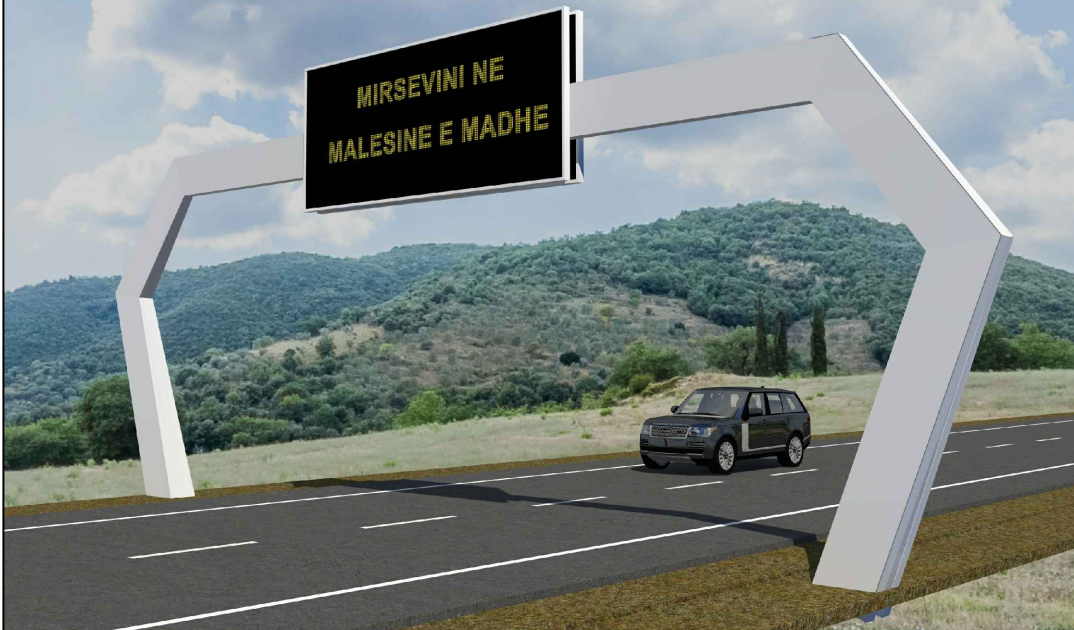
TIRANE 2018

# DIMENSIONIMI I TABELES INFORMUESE



 <small>BASHKIA MALESE E MADHE</small>	Porositi :	Projektoi:	Objekti: TABELE INFORMUESE - URA E VRAKES	
		"LENI-ING" sh.p.k	Faza: Projekt - Zbatimi	
		Ark. Albert LLESHI Ing. Nikoll PALUCA Ing. Maltin GRABOVAJ	Emërtimi i Fletës:	Shkalla: Tiranë 2018
		Adresa: Rr. Uran Pano, Pallati 12 kat, Kati 2 Mobile: 0682042270 Email: leni-ing@hotmail.com	Emërtimi i Fletës:	Shkalla: Fleta A-01

# RENDERA 3D



Porositi :



BASHKIA MALESINE E MADHE

Projektoi:

"LENI-ING" sh.p.k  
 Ark. Albert LLESHI  
 Ing. Nikoll PALUCA  
 Ing. Maltin GRABOVAJ

Adresa: Rr. Uran Pano, Pallati 12 kat. Kati 2  
 Mobile: 0682042270  
 Email: leni-ing@hotmail.com

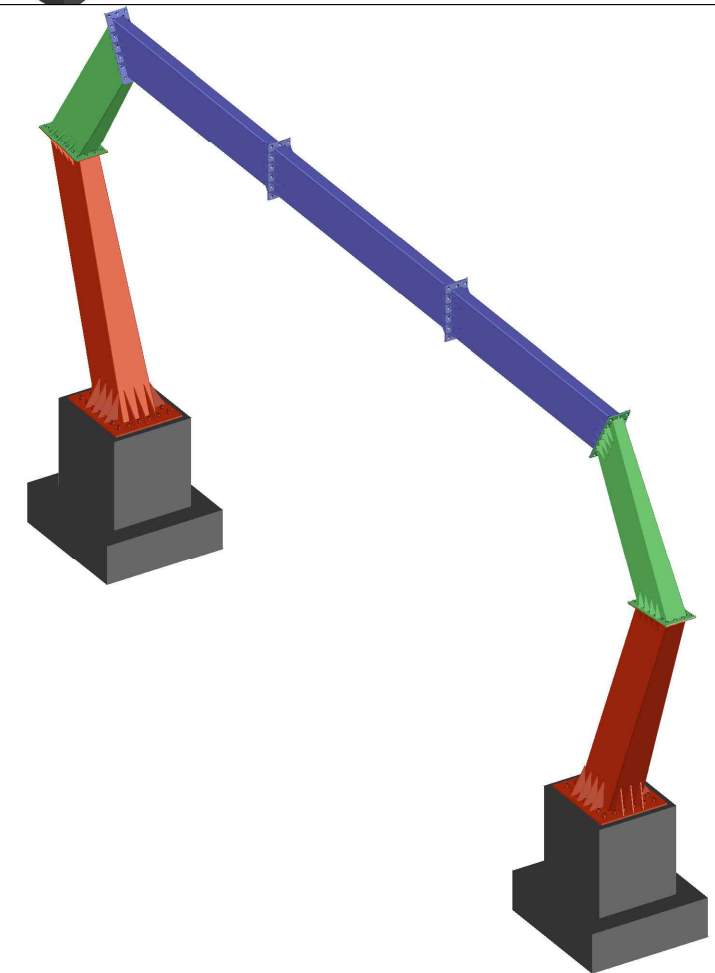
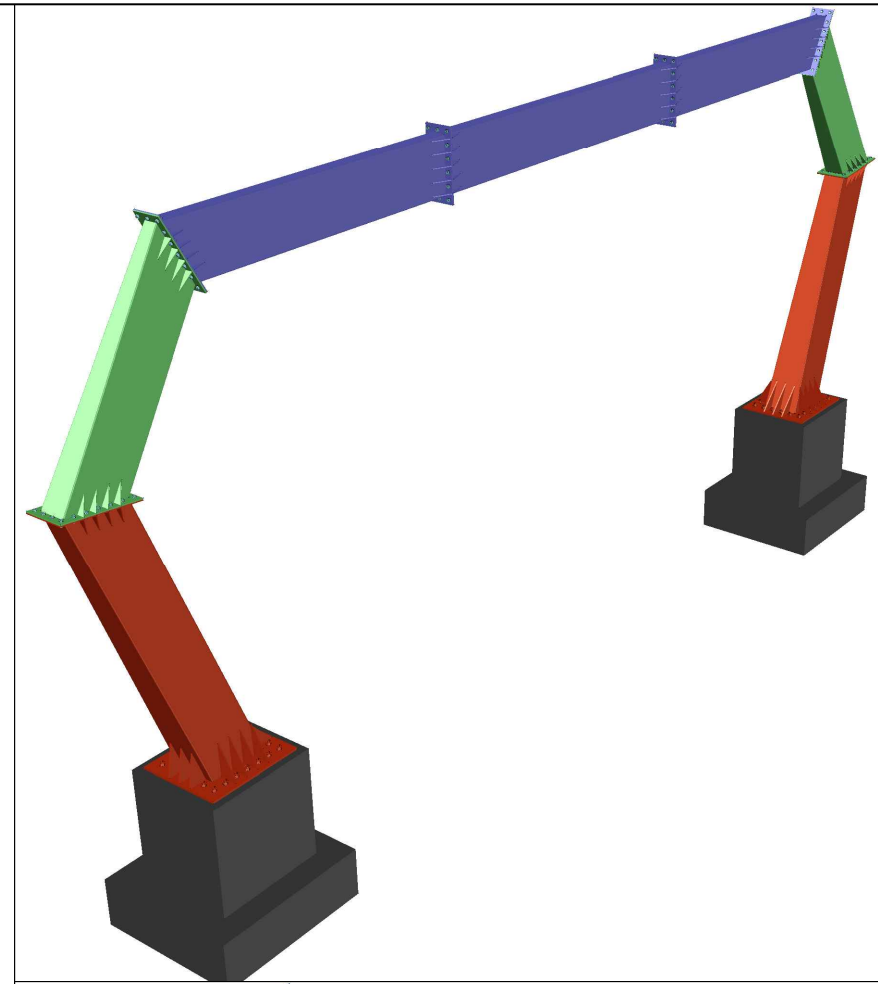
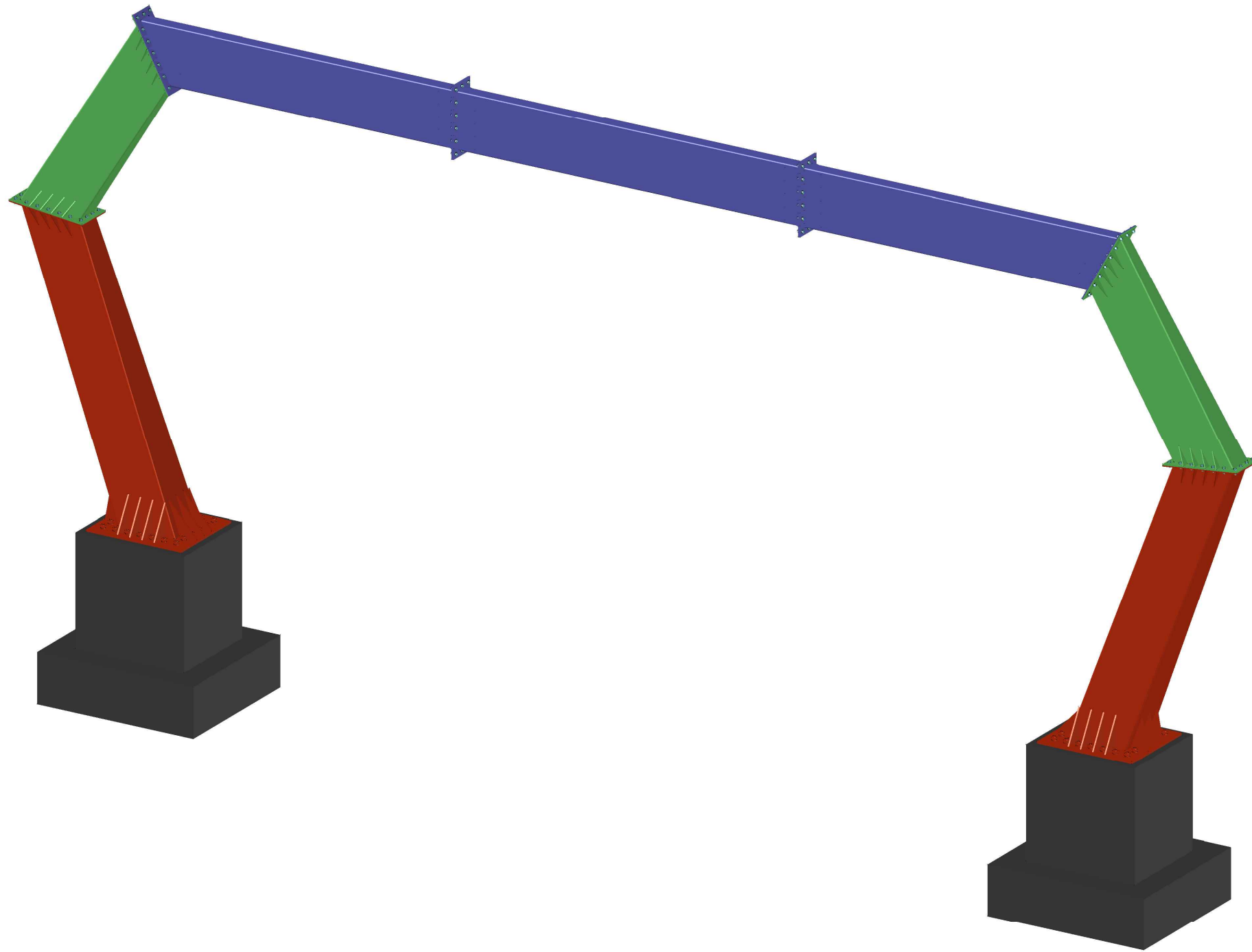
Objekti: TABELE INFORMUESE - URA E VRAKES

Faza: Projekt - Zbatimi

Emërtimi i Fletës: Shkalla: Tiranë 2018

Fleta A-02

# PAMJE 3D-TABELA ELEKTRONIKE



Porositi :



BASHKIA MALESE E MADHE

Projektoi:

"LENI-ING" sh.p.k  
 Ark. Albert LLESHI  
 Ing. Nikoll PALUCA  
 Ing. Maltin GRABOVAJ

Adresa: Rr. Uran Pano, Pallati 12 kat, Kati 2  
 Mobile: 0682042270  
 Email: leni-ing@hotmail.com

Objekti:

INSTALIMI I TABELAVE ELEKTRONIKE

Faza:

Projekt - Zbatimi

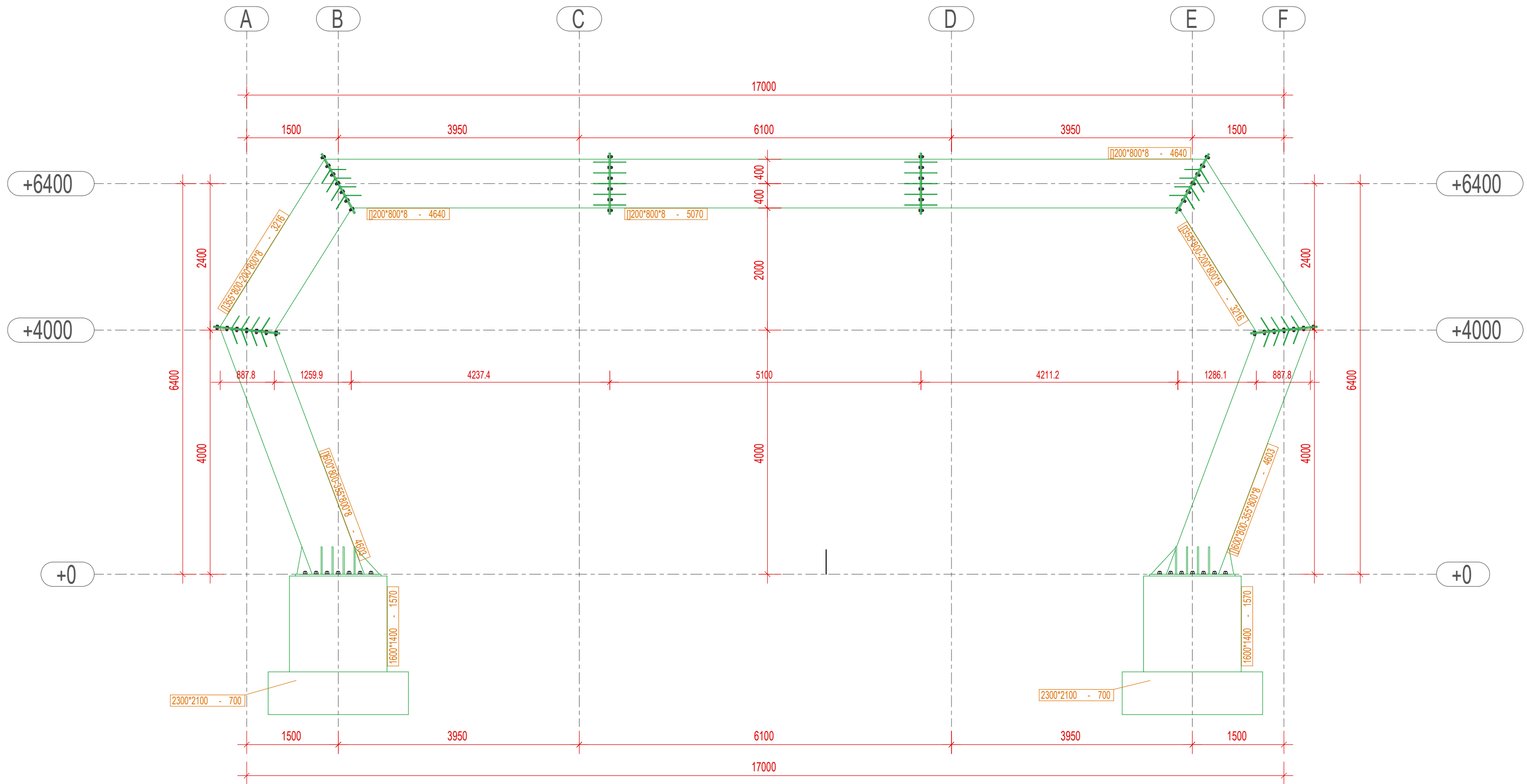
Emërtimi i Fletës:

Shkalla:


Tiranë 2018

Fleta K-01

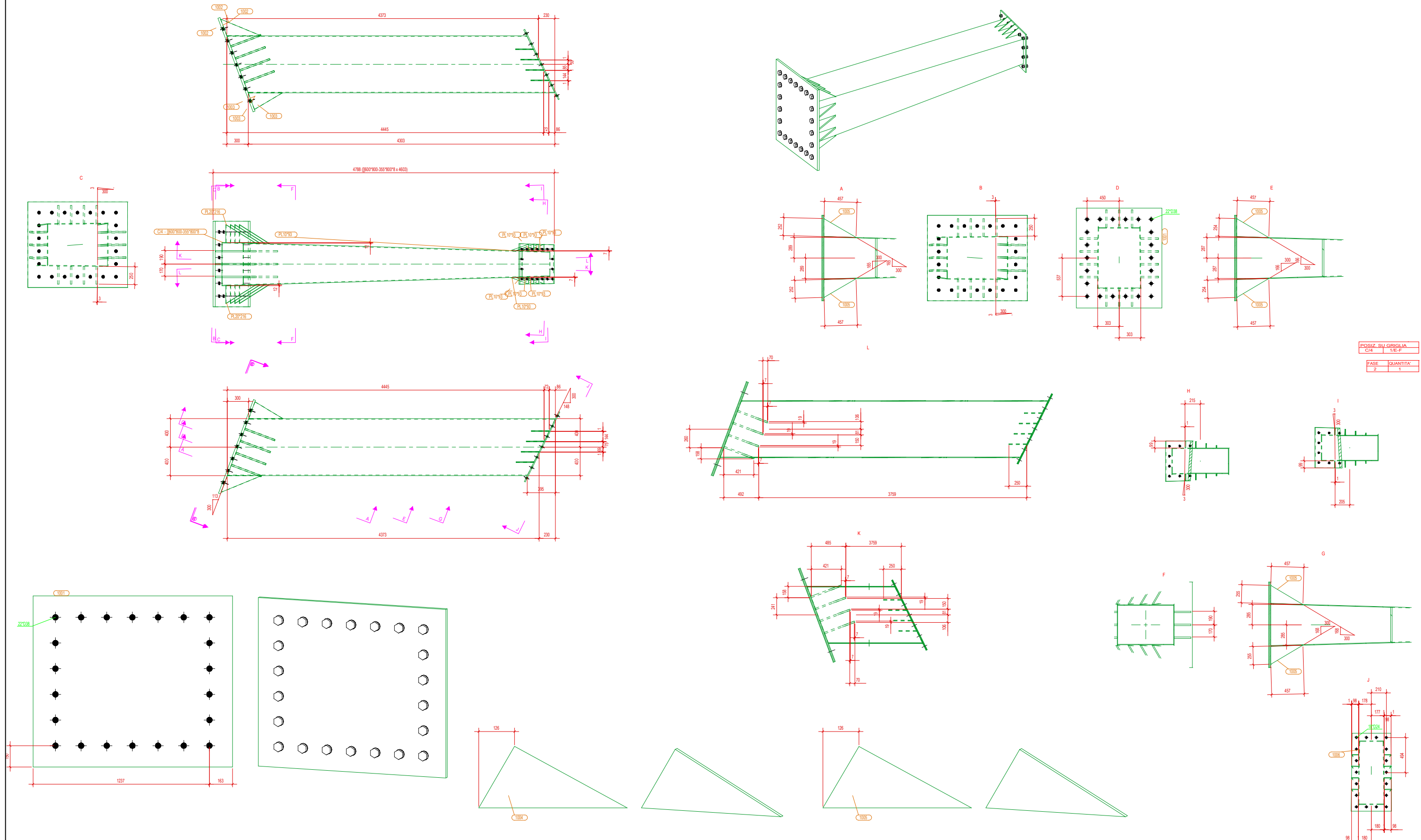
# DIMENSIONIMI I TABELES INFORMUESE



**SHËNIM:**  
 -MATERIALET  
 -Konstrukcioni i kapriates me çelik te Klases S-275  
 -Standarti i bulonave dhe saldimeve: Eurocode 3.  
 -Lartësia e tegelave te saldimit max(a=T ku T është trashësia e elementit me të hollë që bashkohet; 4mm).  
 -ÇELIK I KLASES S500 PER ARMATUREN  
 GJATESORE  
 -ÇELIK I KLASES S400 PER STAFAT  
 -BETON I KLASES C25/30

 BASHKIA MALËSI E MADHE	Porositi : Ark. Albert LLESHI Ing. Nikoll PALUCA Ing. Maltin GRABOVAJ	Projektoi: "LENI-ING" sh.p.k Adresa: Rr. Uran Pano, Pallati 12 kat, Kati 2 Mobile: 0682042270 Email: leni-ing@hotmail.com	Objekti: INSTALIMI I TABELAVE ELEKTRONIKE
	Fazat: Projekt - Zbatimi	Emërtimi i Fietës: Shkalla: Tiranë 2018 Fleta K-02	Sh 1:80

# DIMENSIONIMI I ELEMNTIT 600\*800\*8-355\*800\*8



## SHËNIM:

### -MATERIALET

- Konstrukioni i kapriates me çelik te klases S-275
- Standarti i bulonave dhe saldimeve: Eurocode 3.
- Lartesia e tegelave te saldimit max(a=T ku T eshte trashesia e elementit me te holle qe bashkohet; 4mm).
- ÇELIK I KLASES S500 PER ARMATUREN GJATESORE
- ÇELIK I KLASES S400 PER STAFAT
- BETON I KLASES C25/30

Porositi :



BASHKIA MALËSI E MADHE

Projekttoi:

"LENI-ING" sh.p.k  
Ark. Albert LLESHI  
Ing. Nikoll PALUCA  
Ing. Maltin GRABOVAJ

Adresa: Rr. Uran Pano, Pallati 12 kat, Kati 2  
Mobile: 0682042270  
Email: leni-ing@hotmail.com

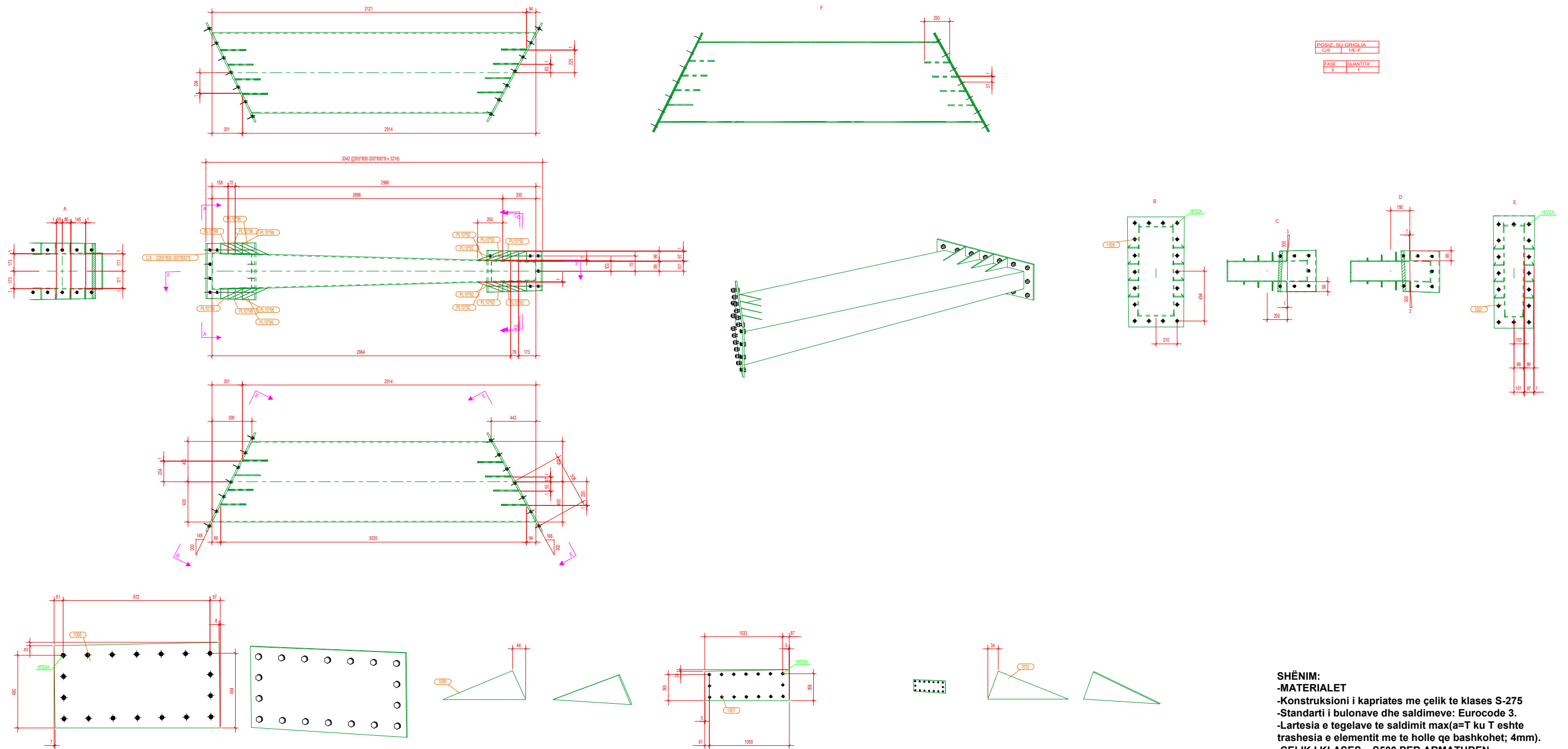
Objekti: INSTALIMI I TABELAVE ELEKTRONIKE

Faza: Projekt - Zbatimi


Emërtimi i Fietës: Shkalla: Tiranë 2018

Sh 1:50 Fleta K-03

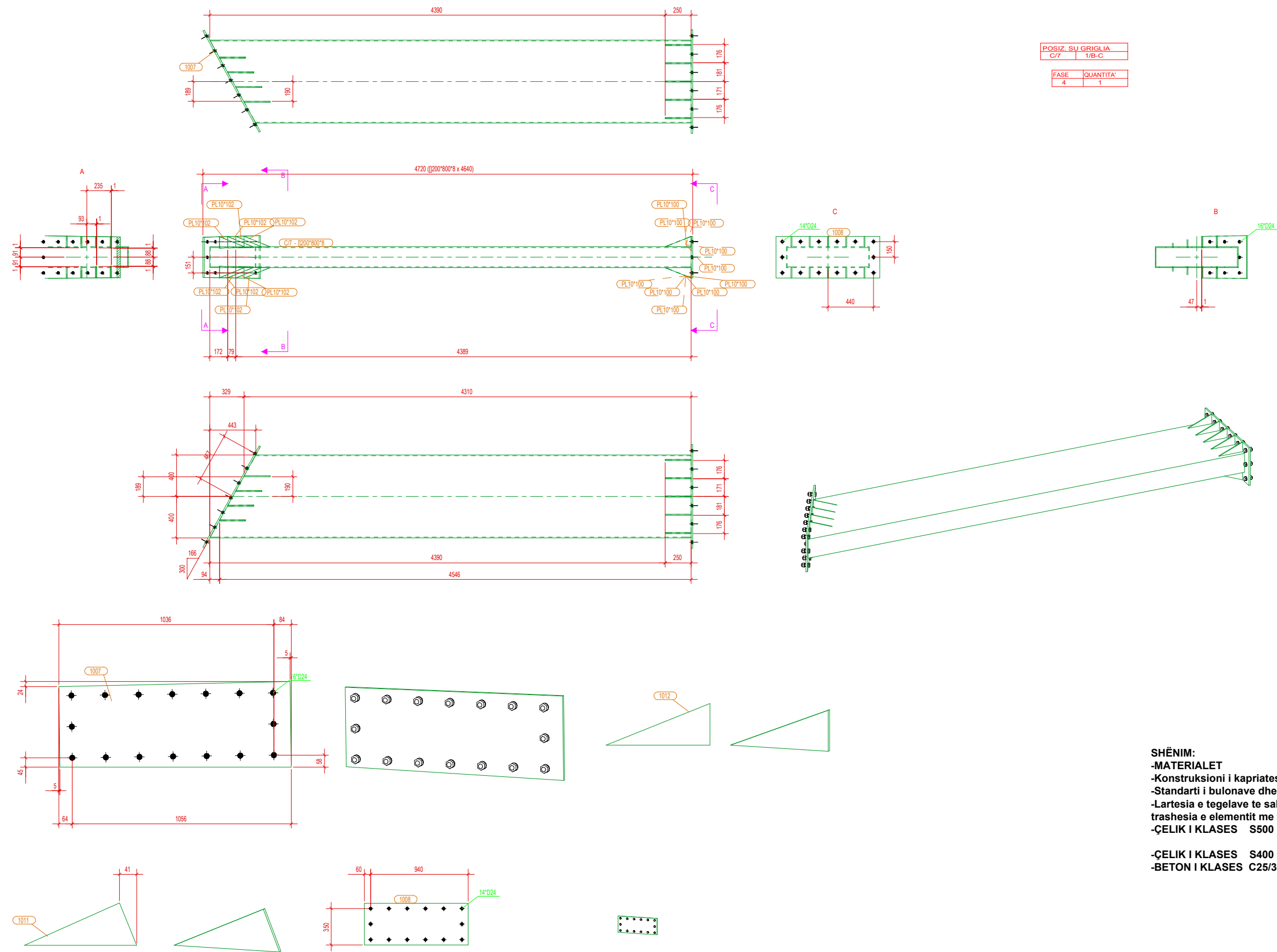
# DIMENSIONIMI I ELEMNTIT 355\*800\*8-200\*800\*8



**SHËNIM:**  
**-MATERIALET**  
 -Konstrukcioni i kapriates me çelik te klases S-275  
 -Standarti i bulonave dhe saldimeve: Eurocode 3.  
 -Lartesia e tegelave te saldimit max(a=T ku T eshte trashesia e elementit me te holle qe bashkohet; 4mm).  
**-ÇELIK I KLASES S500 PER ARMATUREN GJATESORE**  
**-ÇELIK I KLASES S400 PER STAFAT**  
**-BETON I KLASES C25/30**

Porositi :  BASHKIA MALËSI E MADHE	Projektoi: "LENI-ING" sh.p.k Ark. Albert LLESHI Ing. Nikoll PALUCA Ing. Maltin GRABOVAJ Adresa: Rr. Uran Pano, Pallati 12 kat, Kati 2 Mobile: 0682042270 Email: leni-ing@hotmail.com	Objekti: INSTALIMI I TABELAVE ELEKTRONIKE	
		Fazat: Projekt - Zbatimi	
Emërtimi i Fietës:	Shkalla:	Tiranë 2018	
	Sh 1:40	Fleta K-04	

# DIMENSIONIMI I ELEMNTIT 200\*800\*8



POSIZ. SU GRIGLIA	
C/7	1/B-C

FASE	QUANTITA'
4	1

**SHËNIM:**

- MATERIALET**
- Konstrukcioni i kapriates me çelik te klases S-275**
- Standarti i bulonave dhe saldimeve: Eurocode 3.**
- Lartesia e tegelave te saldimit max(a=T ku T eshte trashesia e elementit me te holle qe bashkohet; 4mm).**
- ÇELIK I KLASES S500 PER ARMATUREN**
- GJATESORE**
- ÇELIK I KLASES S400 PER STAFAT**
- BETON I KLASES C25/30**

Porositi :



BASHKIA MALËSI E MADHE

Projekttoi:

"LENI-ING" sh.p.k  
Ark. Albert LLESHI  
Ing. Nikoll PALUCA  
Ing. Maltin GRABOVAJ

Adresa: Rr. Urgan Pano, Pallati 12 kat, Kati 2  
Mobile: 0682042270  
Email: leni-ing@hotmail.com

Objekti: **INSTALIMI I TABELAVE ELEKTRONIKE**

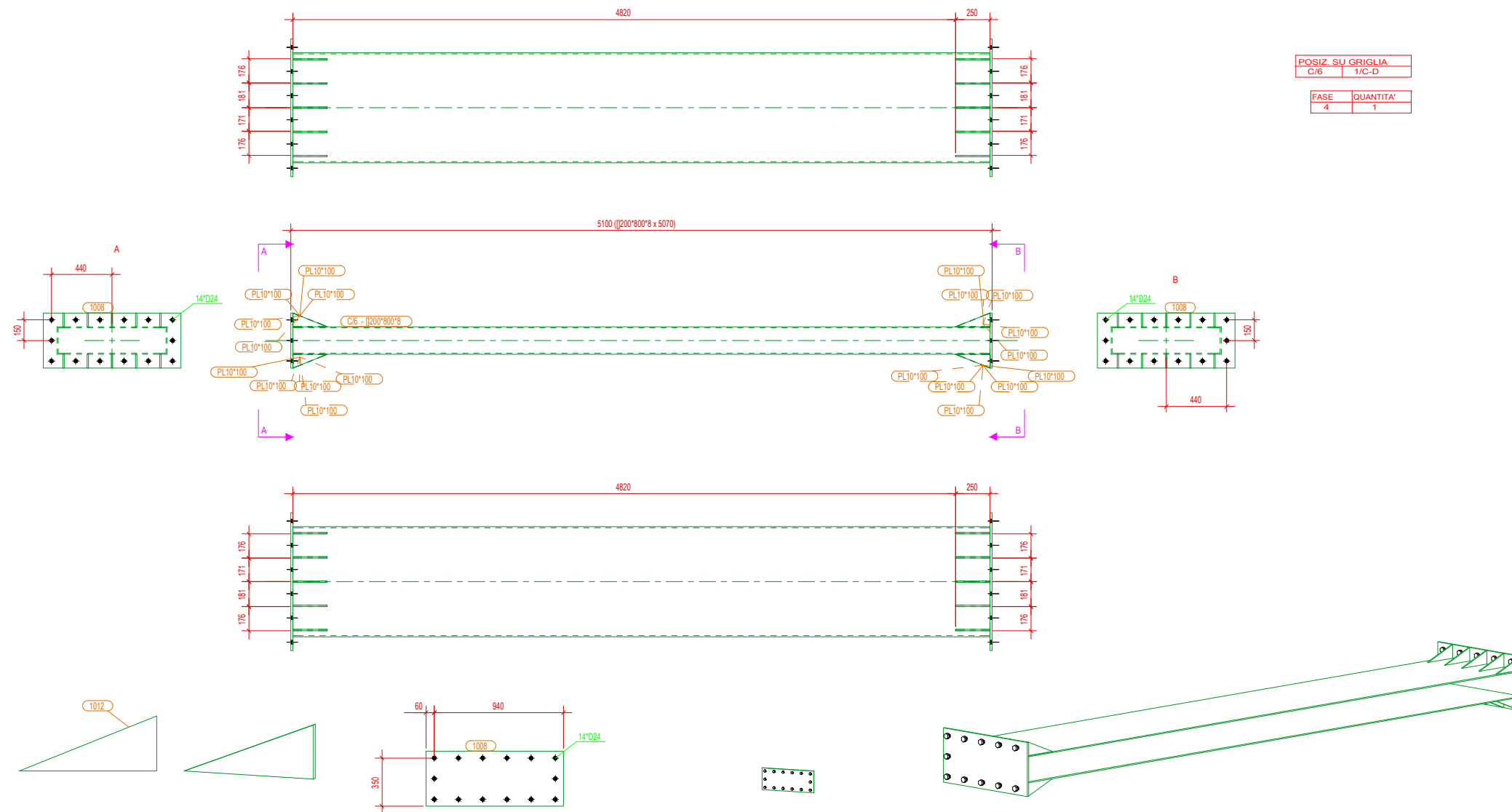
Faza: **Projekt - Zbatimi**

Emërtimi i Fietës: Shkalla: **Tiranë 2018**

Sh 1:40 **Fleta K-05**



# DIMENSIONIMI I ELEMNTIT 200\*800\*8



POSIZ. SU GRIGLIA	
C/6	1/C-D

FASE	QUANTITA'
4	1

### SHËNIM:

#### -MATERIALET

- Konstrukioni i kapriates me çelik te klases S-275
- Standarti i bulonave dhe saldimeve: Eurocode 3.
- Lartesia e tegelave te saldimit max(a=T ku T eshte trashesia e elementit me te holle qe bashkohet; 4mm).
- ÇELIK I KLASES S500 PER ARMATUREN  
GJATESORE
- ÇELIK I KLASES S400 PER STAFAT
- BETON I KLASES C25/30

Porositi :



BASHKIA MALËSI E MADHE

Projekttoi:

"LENI-ING" sh.p.k  
Ark. Albert LLESHI  
Ing. Nikoll PALUCA  
Ing. Maltin GRABOVAJ

Adresa: Rr. Uran Pano, Pallati 12 kat, Kati 2  
Mobile: 0682042270  
Email: leni-ing@hotmail.com

Objekti:

INSTALIMI I TABELAVE ELEKTRONIKE

Faza:

Projekt - Zbatimi

Emërtimi i Fietës:

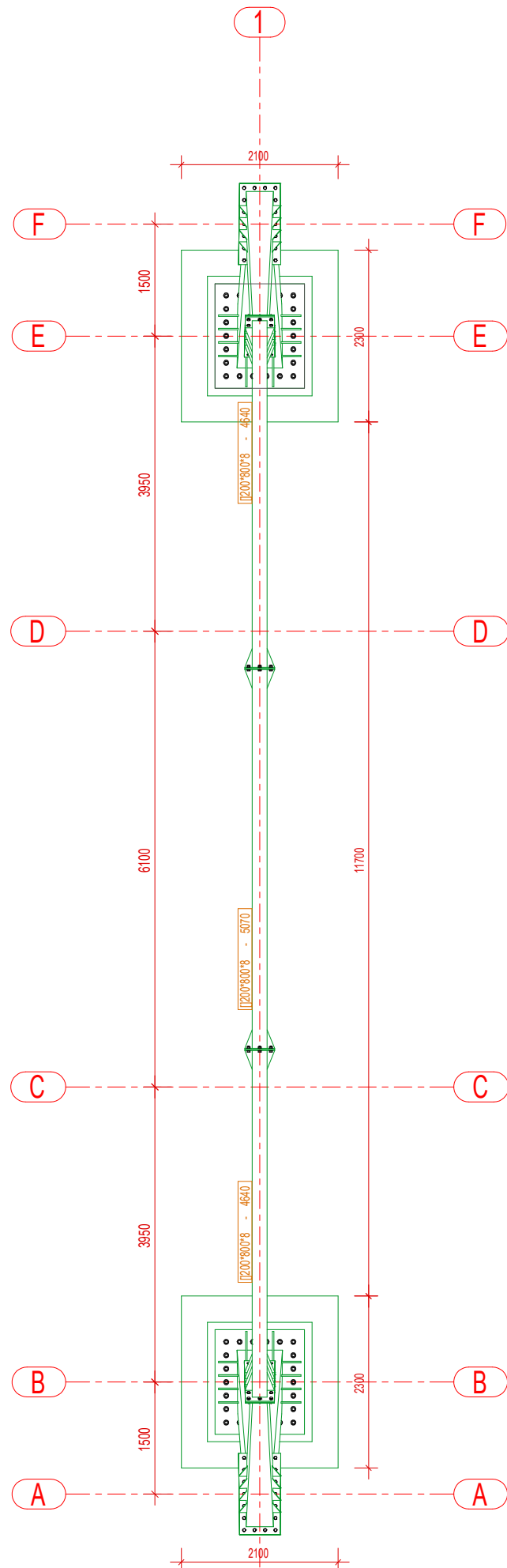
Shkalla:

Tiranë 2018

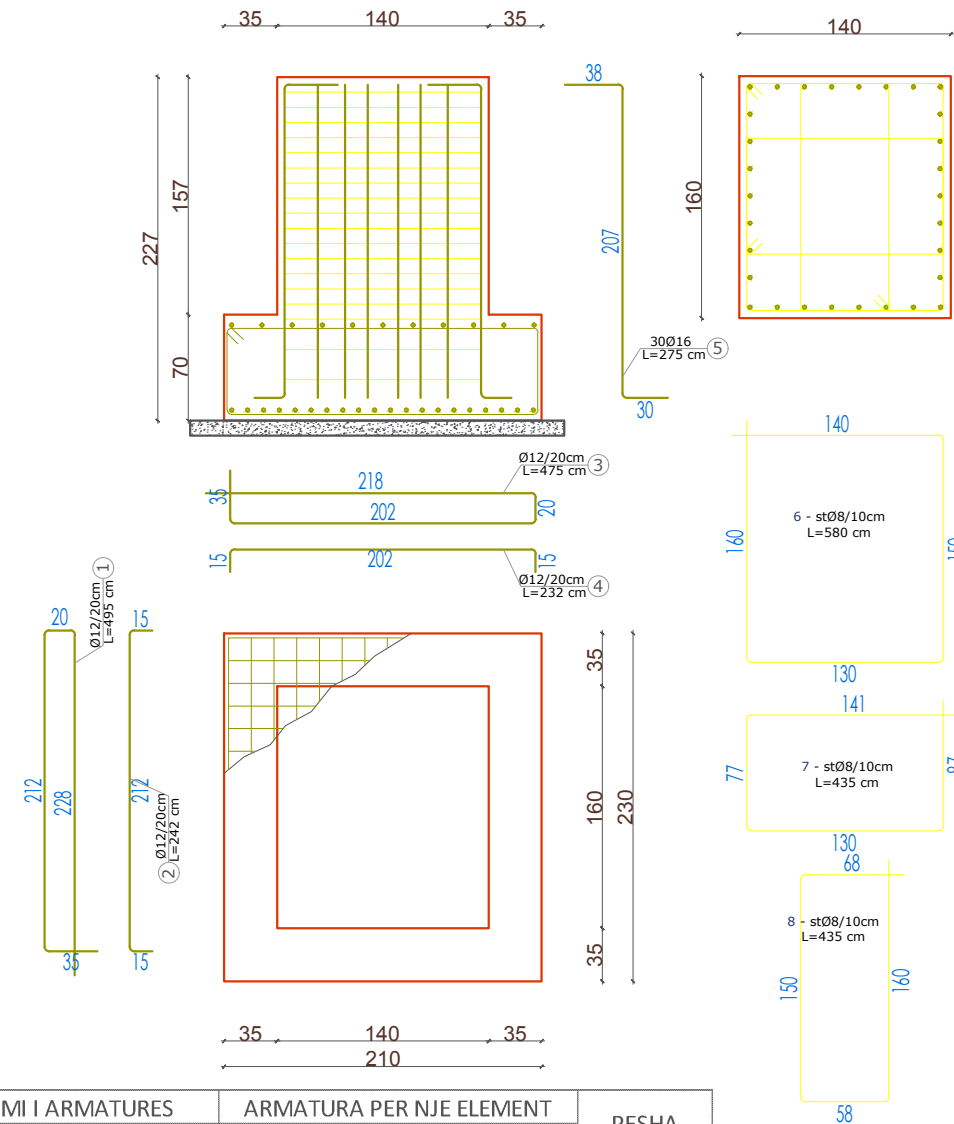
Sh 1:40

Fleta K-06

# PLANI DHE ARMIMI I PLINTAVE




## ARMIMI I PLINTIT SH 1:50



ELEMENTI	SPECIFIKIMI I ARMATURES						ARMATURA PER NJE ELEMENT				PESHA TOTALE (KG)	
	LLOJI	COPE	INDEKS	Ø	l(m)	SASIA (COPE)	L(ml)	Ø	L(m)	P. Spec		PESHA /EL (kg)
ARMIMI I PLINTIT	2	1	12	4.95	11	54.45	Ø≤10mm				Ø≤10mm	
		2	12	2.42	11	26.62	8	275.5	0.395	108.8	217.6	
		3	12	4.75	12	57	Ø>10mm				Ø>10mm	
		4	12	2.32	12	27.84	Ø>10mm				Ø>10mm	
		5	16	2.75	30	82.5	Ø>10mm				Ø>10mm	
		6	8	5.8	19	110.2	12	165.91	0.89	147.7		
		7	8	4.35	19	82.65	16	82.5	1.58	130.4		
		8	8	4.35	19	82.65	SHUMA				278.0	556.0
		SHUMA 1 TRA										386.8
		SHUMA TOT										773.7

**SHËNIM:**  
 -MATERIALET  
 -Konstruksioni i kapriates me çelik te klases S-275  
 -Standarti i bulonave dhe saldimeve: Eurocode 3.  
 -Lartesia e tegelave te saldimit max(a=T ku T eshte trashesia e elementit me te holle qe bashkohet; 4mm).  
 -ÇELIK I KLASES S500 PER ARMATUREN GJATESORE  
 -ÇELIK I KLASES S400 PER STAFAT  
 -BETON I KLASES C25/30

Porositi :  BASHKIA MALËSI E MADHE	Projektoji: "LENI-ING" sh.p.k Ark. Albert LLESHI Ing. Nikoll PALUCA Ing. Maltin GRABOVAJ Adresa: Rr. Uran Pano, Pallati 12 kat, Kati 2 Mobile: 0682042270 Email: leni-ing@hotmail.com	Objekti: INSTALIMI I TABELAVE ELEKTRONIKE	
		Fazat: Projekt - Zbatimi	
Emërtimi i Fletës:	Shkalla:	Tiranë 2018	
	Sh 1:80	Fleta K-07	