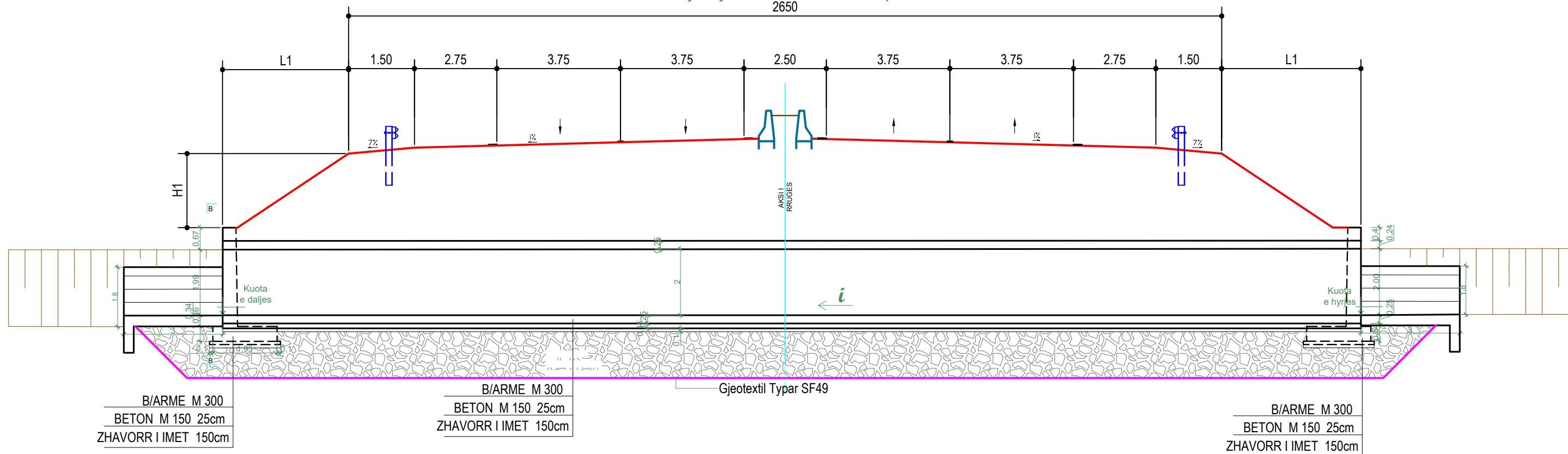
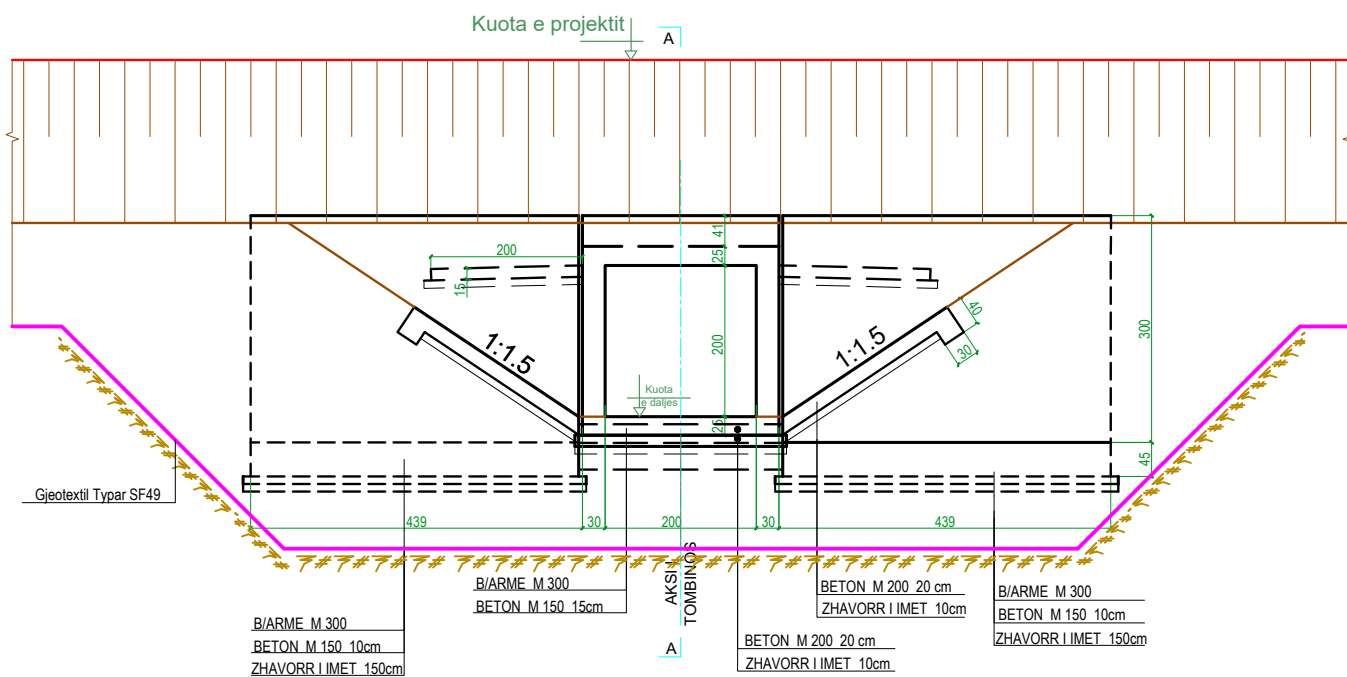


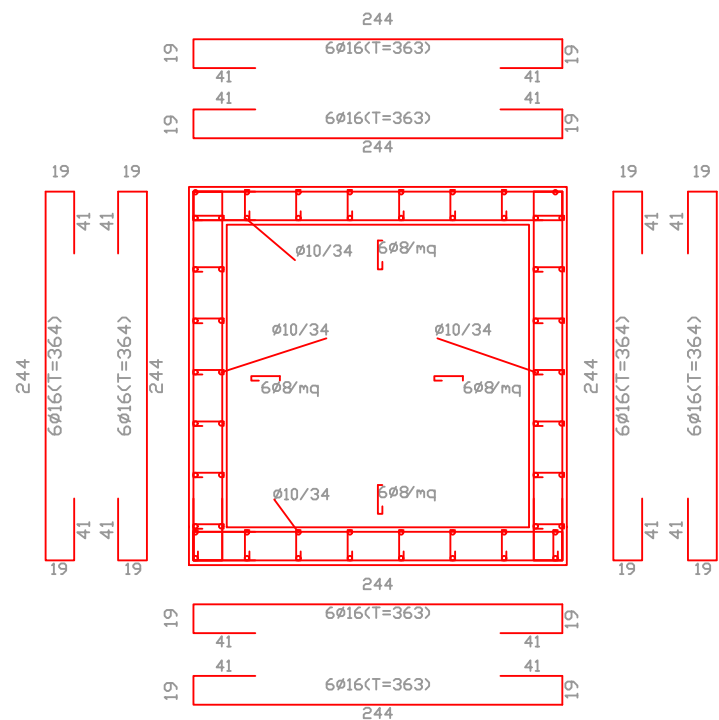
Prerje Gjatesore Sh 1:125 Sipas A-A
2650



PAMJE BALLORE NE HYRJJE Sipas B-B
Sh 1:125



Armimi tombinos 2x2



Nr	km	Kuota e tokes	Kuota e projektit	Laresia e Mbushjes	Gjatesia L1	Kuota e hyrjes	Kuota e daljes	Gradienti	Gjatesia e tombinos	Beton M-200 Tombino	Beton M-300 Tombino	Hekur FeB44-k Tombino	Zhavorr	Hekur FeB44-k Muret	Beton M-200 Muret	Beton M-300 Muret	Hidrolzolim
		(m)	(m)	(m)	(m)	(cm)	(cm)			(m)	(m ³)	(m ³)	(kg)	(m ³)	(kg)	(m ³)	
1	0+995	-0.959	2.185	2.67	3.25	-170	-174	0.06	32.5	13	72.15	12577.5	8.125	1188	3.6	20.34	225
2	2+590	-1.168	2.185	3.3	2.9	-205	-209	0.06	32	12.8	71.04	12384	8	1188	3.6	20.34	225
Totali									25.8	143.19	24961.5	16.125	2376	7.2	40.68	450	

- Shenim: 1. Kuotat e hyrje daljeve te tombinove te saktesohen ne bashkepunim me Bordin e Kullimit te ujrave Durrës".
 2. Themeli i mureve dhe i tombinove eshte parashikuar te vendoset ne nje shtrese me aftesi mbajtese 2 kg/cm²
 3. Shtresa e zhavorrit per nen themelin e tombinove te ngjeshet derisa te arrije 95 % te proves Proctor.
 4. Kjo flete vizatimi zevendeson fleten F2 te dhene me pare per kete projekt.

