

# TECHNICAL REPORT (DESCRIPTIVE PROJECT)

**Performance-based maintenance, K/Cerme – Hyrje Divjake Road + Dalje Divjak – Plazh Divjake + Jeta e Re – Kosove + Bypass Fier – Kolonje Roundabout + Fier – Seman Plazh + K/Pojan - Apolloni + Bypass Fier Road (75.1km) (Contract 11)**

## 1. Scope of services to be carried out

The services to be provided include all the activities, physical and others, which should be carried out by their compliance with the levels of service, and the criterion set for their performance fulfillment, or any other requirement. In particular, they include managerial duties and physical works concerning road-related assets and items:

- Asphalt
- Shoulders
- Road signs and supply of road safety devices
- Drainage facilities
- Vegetation control
- Escarpments (excavations and shoulders)
- Art works
- Traffic management
- Soil accumulation
- Snow removal (if winter maintenance is available)

The services required by road maintenance are classified in:

2. Rehabilitation/Periodic Works in the form of quantity of a ceiling amount, while indicating the quantities of measurable works to be carried out in order for the road to meet its performance standards.
3. Routine Maintenance Services in the form of quantity expressed in a monthly ceiling amount (this will be a monthly quantity applicable throughout the contract duration, expressed in price per km for each month multiplied by road length and duration of services);
4. Emergency Works in the form of a traditional bill of quantities.

The main functions of maintenance bases in general should be as follows:

1. Supervision of road segment/section in certain periods by levels of service
2. Control of traffic data for this segment
3. Observation of meteorological factors
4. First aid in case of accidents (related to road and traffic elements)
5. Maintenance on desired road layers conditions
6. Maintenance of parking spaces, service, road signs, lighting systems, and future signaling and telecommunication.
7. Repairs and reconstruction after road accidents
8. Repairs and reconstruction after natural disasters
9. Cleaning operations of drains, culverts and other facilities related to the removal of water from road surface.
10. All the operations for the cleaning and maintenance of:
  - road signs, safety devices (guardrails, parapets) and lighting system
  - local repair of sidewalk damages
  - vegetation protection
  - winter activities for the removal of snow and ice.

Winter maintenance works include:

1. Preliminary works before winter
2. Organization of materials storage locations
3. Protective measures for snow, ice, snow piles and avalanches
4. Removal of snow from highway carriageway and communication signs and signals
5. Marking of carriageway sides
6. Ensuring carriageway drainage system operation
7. Removal of vehicles from the road
8. Installation of specific communication signals in case of special traffic regime for road closures
9. Ongoing public information on road conditions and traffic flow

**5. Segments to be covered by the contract:**

Road No.	No.	Road names	Road type	Total length (km)	Width (m)
57	1	K/Cerme – Hyrje Divjak	SFL	13.3	6
57	2	Dalje Divjak – Plazh Divjak	SFL	5.9	6
68	3	Jeta e re - Kosovë	SHL	4.8	5
SH4- V	4	Bypass Fier – Kolonj Roundabout	SFL-SHL	8.5	6
94	5	Fier - Seman (Beach)	SFL	17	6
66	6	K/Pojan - Pojan (Apolloni)	SFL	3.6	6
N/A	7	Bypass Fier	SFL	22	22
<b>CONTRACT 7 SUM</b>				<b>75.1</b>	

Note: SFL – road in a field terrain with one carriageway, without winter maintenance, SHL – road in a hilly terrain with one carriageway, without winter maintenance, SMTW – road in a mountainous terrain with one carriageway, with winter maintenance.

**6. Specific condition**

For each case, the segments to be included in investment (reconstruction) or other projects of the Albanian Road Authority will be reduced from the contract.

**7. Road signs and safety**

The maintenance of road signs and safety (guardrails) will be focused on repair and upgrade of the existing one.

**8. Description of the area where the road is located**

K/Cerem –Hyrje Divjake

This segment connects Divjake to Rrogozhin - Lushnje highway.

It is a dual carriageway segment.

The asphalt layers' conditions are good, but repairs are needed.

The side ditches and culverts need partial cleaning.

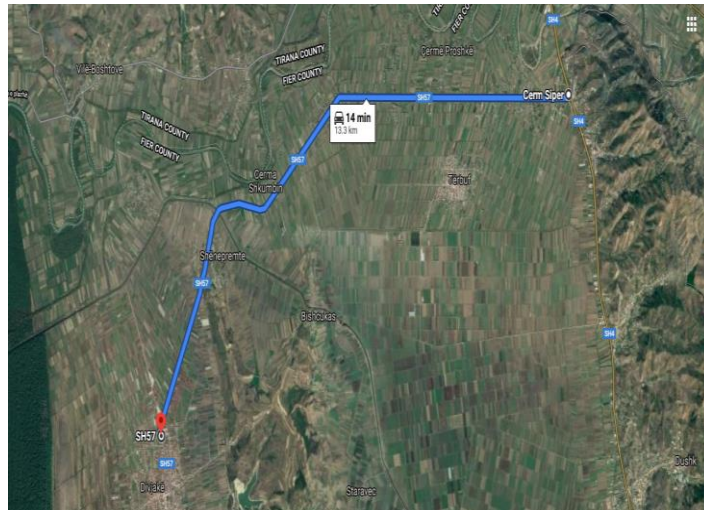
The road signs and safety need upgrade and partial replacements.

The road lies in a field terrain with one carriageway, without winter maintenance.

The required level of service is "good".

Start coordinates: 41.052364,19.649926

End coordinates: 41.003997,19.529561



### Dalje Divjak – Plazh Divjak

This segment connects Divjake to the beach area.

It is a dual carriageway segment.

The asphalt layers' conditions are good.

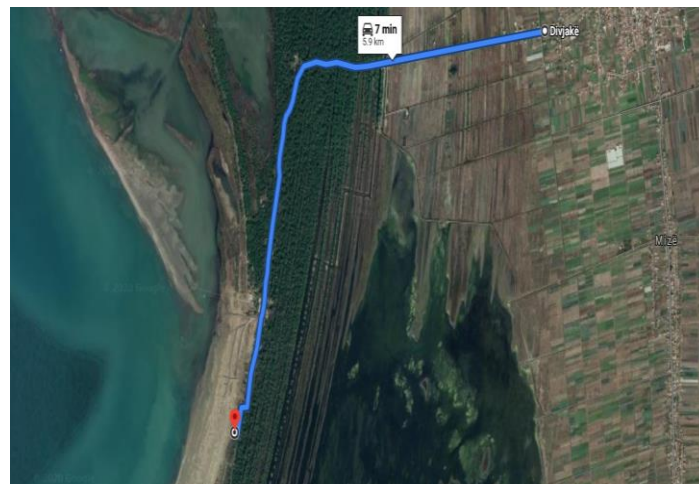
The side ditches and culverts need partial cleaning.

The road signs and safety need upgrade and partial replacements.

The road lies in a field terrain with one carriageway, without winter maintenance.

The required level of service is “good”.

Start coordinates: 40.992470,19.518656 End coordinates:40.964015,19.476501



### Jeta e Re - Kosov

This segment connects the villages of Jeta e Re and Kosov to Lushnje – Berat road axis.

It is a dual carriageway segment.

The asphalt layers' conditions are good. The side ditches and culverts need partial cleaning.

The road signs and safety need upgrade and partial replacements.

The road lies in a hilly terrain with one carriageway, without winter maintenance.

The required level of service is “good”. Start coordinates: 40.896482,19.760811

End coordinates:40.900132, 19.803318



### Bypass Fier – Kolonj Roundabout

This segment connects Kolonje to the area of Fier and Lushnje.

It is a dual carriageway segment.

The asphalt layers need repairs. The side ditches and culverts need restructuring and cleaning.

The road signs and safety need upgrade and partial replacements.

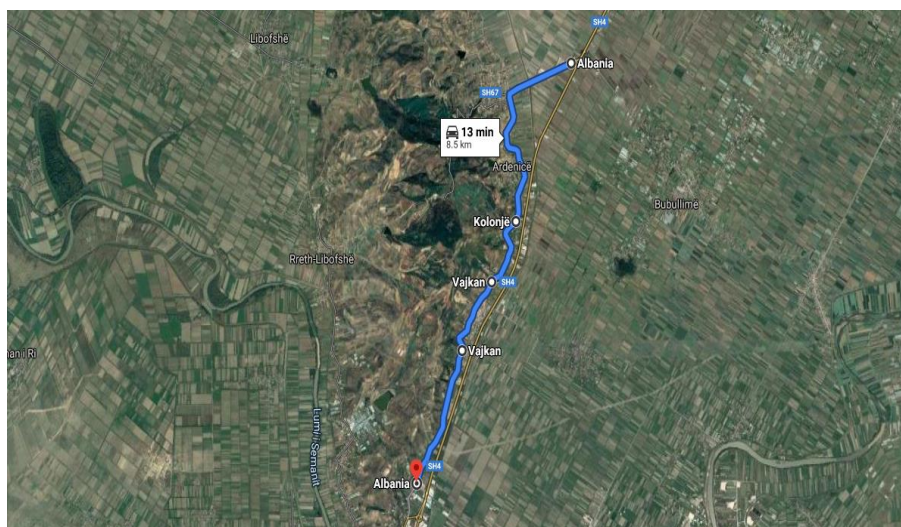
The road lies in a hilly and field terrain with one carriageway, without winter maintenance.

The required level of service is “minimum”. The segment needs reconstruction (investment) by ARA.

Start coordinates: 40.830448, 19.622258

coordinates: 40.770547, 19.587080

End



### Fier – Seman (Beach)

This segment connects the area of Seman beach to Fier.

It is a dual carriageway segment.

The asphalt layers’ conditions are good, but minor repairs are needed.

The side ditches and culverts need partial cleaning.

The road signs and safety need upgrade and partial replacements.

The road lies in a field terrain with one carriageway, without winter maintenance.

The required level of service is “good”.

Start coordinates: 40.726718,19.551887

40.759493,19.370269

End coordinates:





### K/Pojan - Apolloni

This segment is the left branch of Fier - Seman road.

It is a dual carriageway segment.

The asphalt layers' conditions are good, but minor repairs are needed.

The side ditches and culverts need partial cleaning.

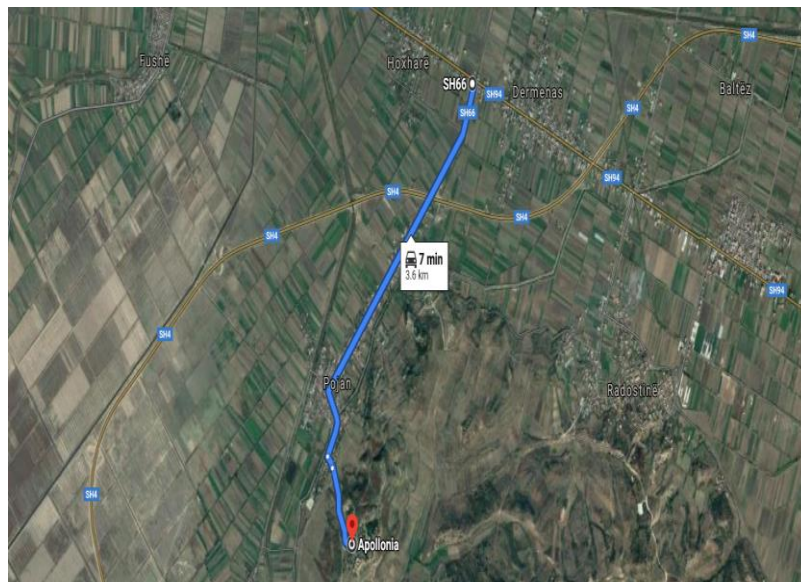
The road signs and safety need upgrade and partial replacements.

The road lies in a field terrain with one carriageway, without winter maintenance.

The required level of service is "good".

Start coordinates: 40.747257,19.486120

End coordinates: 40.721437,19.470928



### Bypass Fier

This road segment is totally new and connects Lushnje – Vajkan highway to Levan – Vlore highway).

It is a segment with independent carriageways, divided by impassable traffic median barriers, each with two lanes, paved shoulders. The side ditches and culverts need partial cleaning. The road lies in a field terrain with two carriageways, without winter maintenance. The required level of service is “very good”. Start coordinates: 40.770735,19.589712  
coordinates:40.673884,19.478659

End

