

TECHNICAL REPORT (DESCRIPTIVE PROJECT)

Performance-based maintenance, Vorë - Maminas, Kamëz Turn - Vorë (parallel roads), Kamëz – Zall Herr – Bovillë, Road Intersection No. 52 – Prezë Castle, Gjolë Bridge – Bilaj, Bubq- Ishëm, Bërxullë - Domje, Bërxullë - Laknas (69.4 km), (Contract 1)

- **Scope of services to be carried out**

The services to be provided include all the activities, physical and others, which should be carried out by their compliance with the levels of service, and the criterion set for their performance fulfillment, or any other requirement. In particular, they include managerial duties and physical works concerning road-related assets and items:

- Asphalt
- Shoulders
- Road signs and supply of road safety devices
- Lighting (where available)
- Drainage facilities
- Vegetation control
- Escarpments (excavations and shoulders)
- Art works (wing and retaining walls, other culverts)
- Bridges in particular
- Traffic management
- Soil removal
- Snow removal (if winter maintenance is available)

The services required by road maintenance are classified in:

- The Routine Maintenance services in the form of quantity expressed in a monthly ceiling amount (this will be a monthly quantity applicable throughout the contract duration, expressed in price per km for each month multiplied by road length and duration of services);
- Emergency Works in the form of a traditional bill of quantities.
- Rehabilitation/Periodic Works in the form of quantity of a ceiling amount, while indicating the quantities of measurable works to be carried out in order for the road to meet its performance standards. Such works will be carried out during the contract duration (at least once a year), to the quantity and place specified in cooperation with the employer, contractor and works supervisor.

The main functions of maintenance bases in general should be as follows:

1. Supervision of road segment/section in certain periods by levels of service
2. Observation of meteorological factors
3. First aid in case of accidents (related to road and traffic elements)
4. Maintenance on desired road layers conditions
5. Maintenance of parking spaces, service, road signs, lighting systems, and future signaling and telecommunication
6. Repairs and reconstruction after road accidents
7. Repairs and reconstruction after natural disasters
8. Cleaning operations of drains, culverts and other facilities (bridges and art works) related to the removal of water from road surface
9. All the operations for the cleaning and maintenance of:
 - road signs, safety devices (guardrails, parapets) and lighting system (replacement of bulbs, minor repairs of conductors, etc.)
 - maintenance, cleaning and repair of bridges (including bearings greasing, their metal parts painting, etc.;
 - local repair of sidewalk damages
 - vegetation protection
 - winter activities for the removal of snow and ice.

Winter maintenance works include:

1. Preliminary works before winter
2. Organization of materials storage locations
3. Protective measures for road ice in case of extremely low temperatures
4. Removal of snow from highway carriageway and communication signs and signals
5. Marking of carriageway sides
6. Ensuring carriageway drainage system operation
7. Removal of vehicles from the road
8. Installation of specific communication signals in case of special traffic regime for road closures
9. Ongoing public information on road conditions and traffic flow

- **Segments to be covered by the contract:**

Road No.	Index	Road names	Road type	Total length (km)
				a
		ROUTINE MAINTENANCE		
2	1/1	Vorë - Maminas	SFL	5.7
2 / left	1/2	Kamëz Turn - Vorë (left parallel road)	SFL	12.3
2 / right	1/3	Kamëz Turn - Vorë (right parallel road)	SFL	12.3
53	1/4	Kamëz - Zall Herr	SFL	6.7
53	1/5	Zall Herr - Bovillë (non-asphalt road)	SHL	7.1
N/A	1/6	Road Intersection No.52 - Prezë Castle	SHL	3.2
62	1/7	Gjolë Bridge - Bilaj (Llixha)	SFL	3.7
N/A	1/8	Bubq - Ishëm	SFL	13.3
N/A	1/9	Bërxullë - Domje	SFL	1.5
N/A	1/10	Bërxullë - Laknas	SFL	3.6
	1	CONTRACT 1 LENGTH IN KM		69.4

Note: SFL – road in a field terrain with one carriageway, without winter maintenance, SHL – road in a hilly terrain with one carriageway, without winter maintenance

- **Specific condition**

For each case, the segments to be included in investment (reconstruction) or other projects of the Albanian Road Authority will be reduced from the contract.

- **Road signs and safety**

The maintenance of road signs and safety (guardrails) will be focused on repair and upgrade of the existing one.

- **Description of the area where the road is located**

Vorë – Maminas

This road segment lies to the left side of Tiranë-Durrës highway, in a rural area.

It is a single carriageway segment.

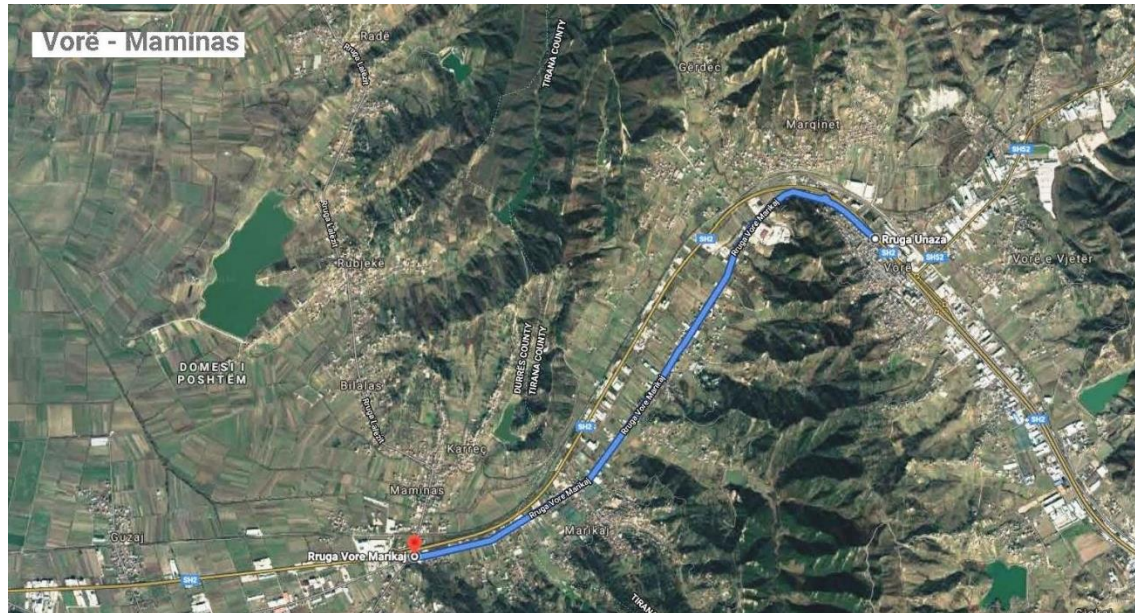
The asphalt layers' conditions are good as they have been recently rehabilitated.

The side ditches and culverts need partial cleaning.

The road signs and safety need upgrade and partial replacements.

The road lies in a hilly terrain with one carriageway, without winter maintenance.

The required level of service is “good”.



Kamëz Turn - Vorë (left parallel road)

This road segment lies to the left side of Tiranë-Durrës highway, in an industrial area.

It is a single carriageway segment.

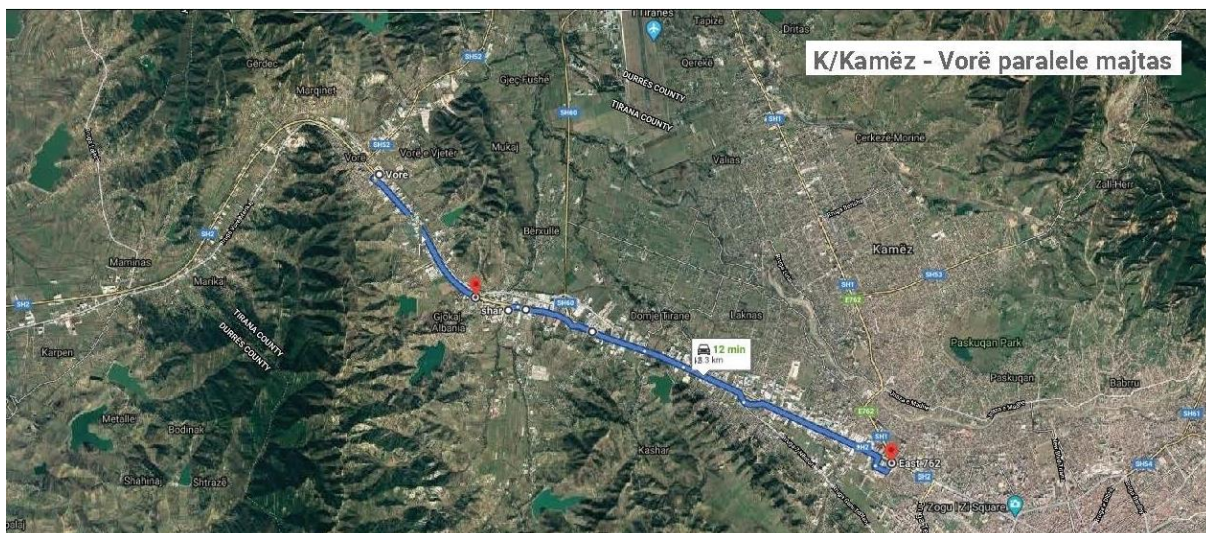
The asphalt layers' conditions are good, but partial repairs are needed.

The side ditches and culverts need partial cleaning.

The road signs and safety need upgrade and partial replacements.

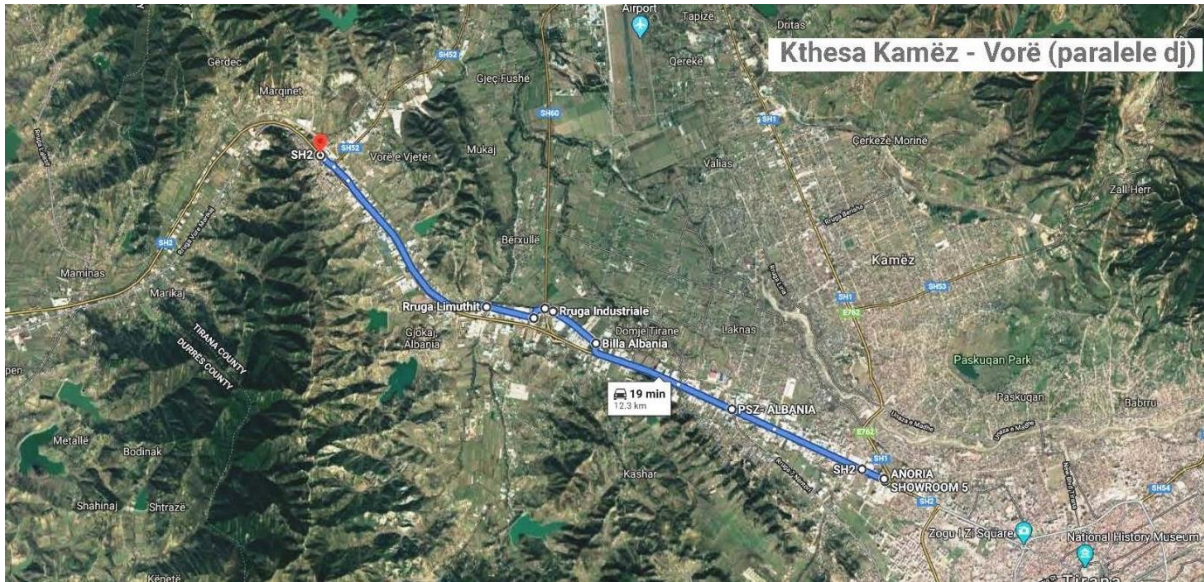
The road lies in a field terrain with one carriageway, without winter maintenance.

The required level of service is “good”.



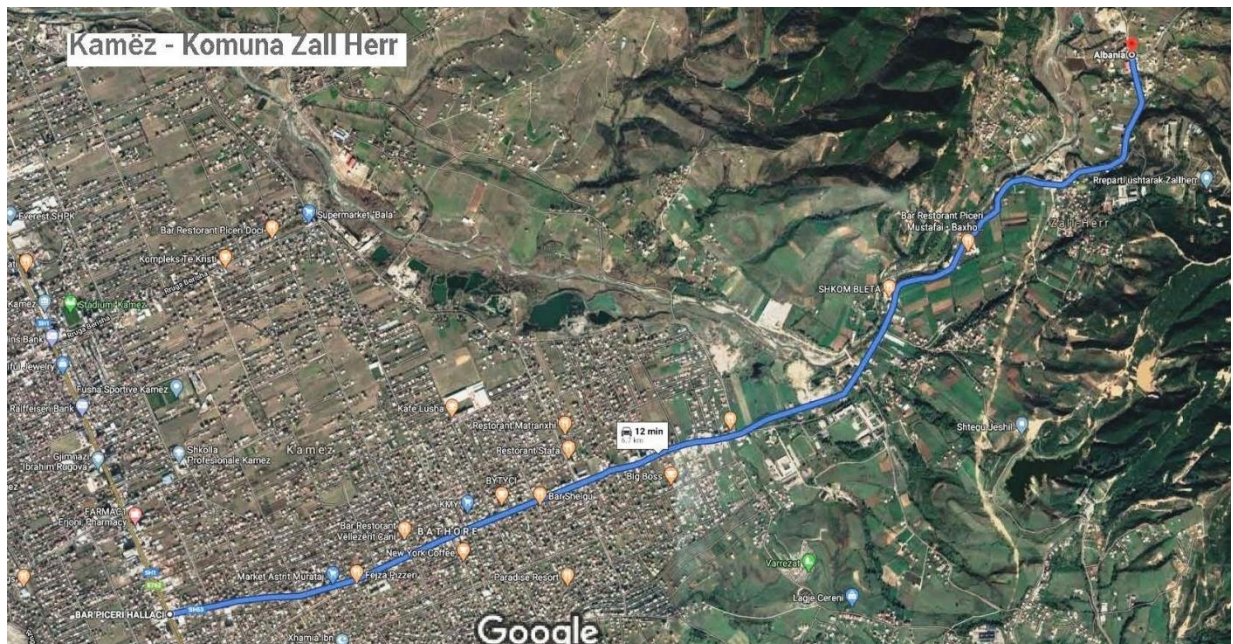
Kamëz Turn - Vorë (right parallel road)

This road segment lies to the right side of Tiranë-Durrës highway, in a rural area.
 It is a single carriageway segment.
 The asphalt layers' conditions are not good, and repairs are needed.
 The side ditches and culverts need partial cleaning.
 The road signs and safety need upgrade and partial replacements.
 The road lies in a hilly terrain with one carriageway, without winter maintenance.
 The required level of service is "good".



Kamëz - Zall Herr

This road segment is a right branch of the road no. 1. Tiranë-Hani i Hotit.
 It is a single carriageway segment.
 The asphalt layers' conditions are good.
 The side ditches and culverts need partial cleaning.
 The road signs and safety need upgrade and partial replacements.
 The road lies in a field terrain with one carriageway, without winter maintenance.
 The required level of service is "good".



Zall Herr - Bovillë

This road segment is a continuity of the road K. Zall Herr (Roar Intersection No. 1) - left branch, Zall Herr Commune, in a rural area.

It is a segment with one carriageway.

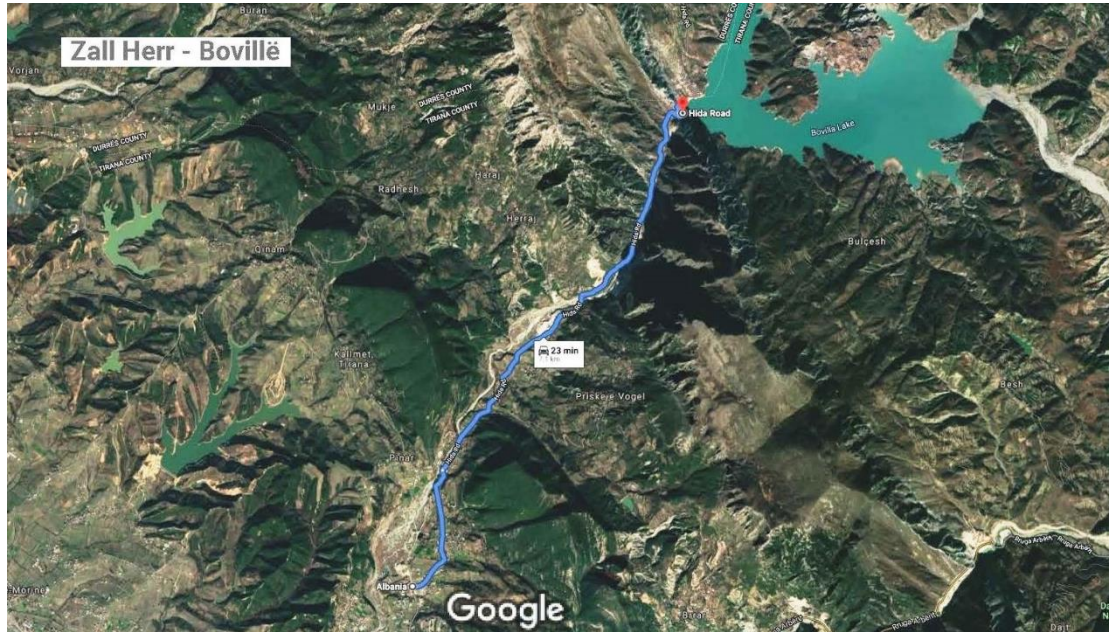
It is a gravel-paved road, 4.5m wide.

The side ditches and culverts need cleaning.

The road signs and safety need upgrade and partial replacements.

The road lies in a hilly terrain with one carriageway, without winter maintenance.

The required level of service is “minimum”.



Road Intersection No.52 - Prezë Castle

This road segment is a right branch of the road no.52, Railroad Overpass Vorë - Exit of Overpass F. Krujë, in a rural area.

It is a single carriageway segment.

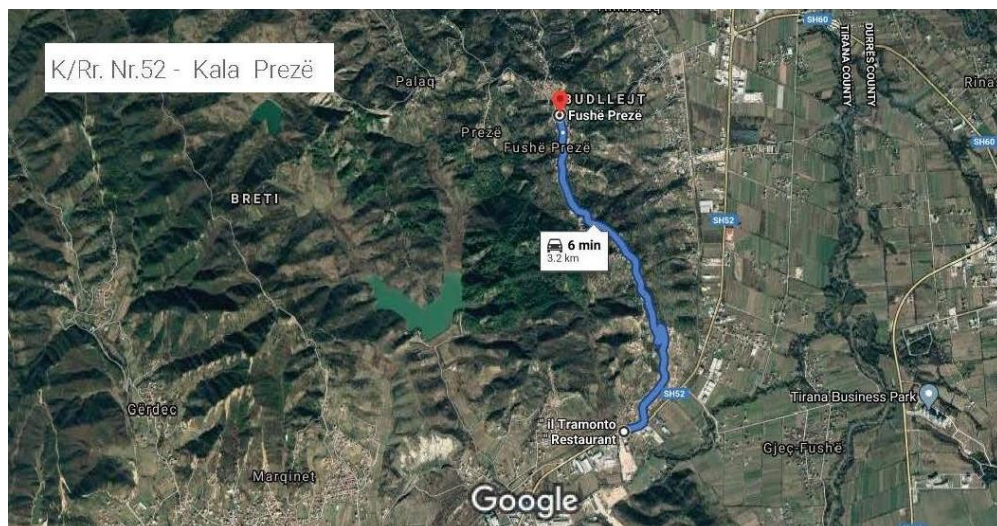
The asphalt layers' conditions are good.

The side ditches and culverts need partial cleaning.

The road signs and safety need upgrade and partial replacements.

The road lies in a hilly terrain with one carriageway, without winter maintenance.

The required level of service is “good”.



Gjolë Bridge - Bilaj (Llixha)

This road segment traverses Fushë Kruja city.

It is a single carriageway segment.

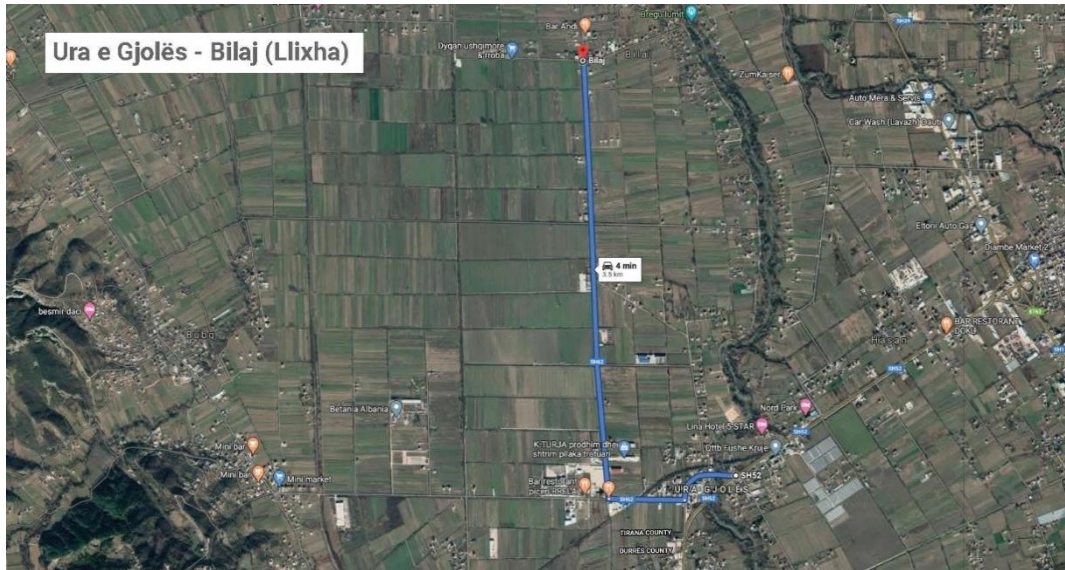
The asphalt layers' conditions are good.

The side ditches and culverts need partial cleaning.

The road signs and safety need upgrade and partial replacements.

The road lies in a field terrain with one carriageway, without winter maintenance, high risk.

The required level of service is "good".



Bubq – Ishëm

This road segment is a right branch of road no. 1, Tiranë – Shkodër.

It is a single carriageway segment.

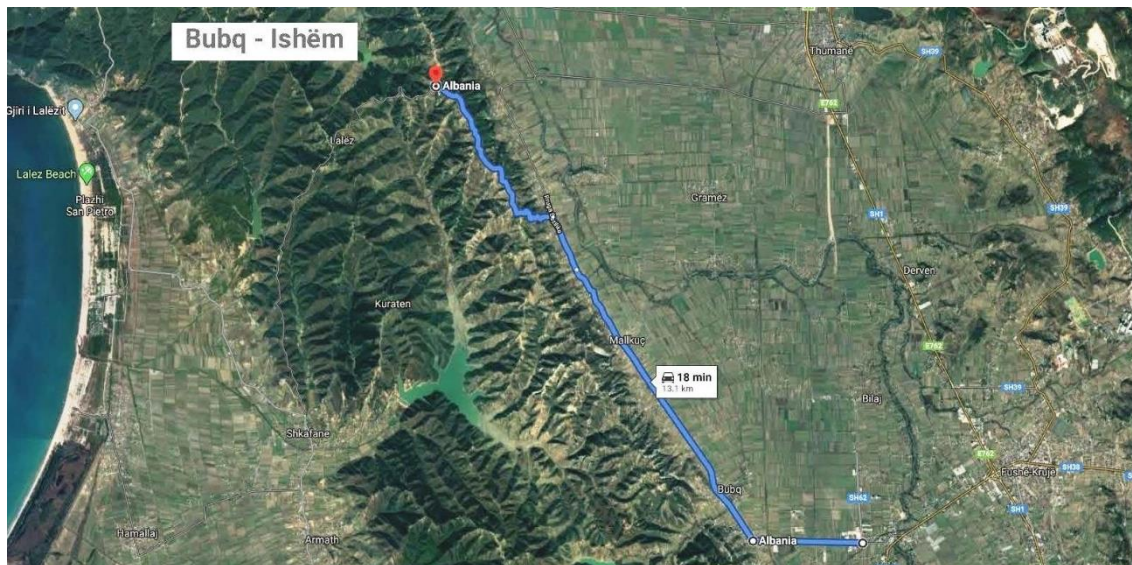
The asphalt layers' conditions are good, but minor repairs are needed.

The side ditches and culverts need partial cleaning.

The road signs and safety need upgrade and partial replacements.

The road lies in a field terrain with one carriageway, without winter maintenance, high risk.

The required level of service is "good".



Bërçullë – Domje

Bërçullë – Laknas

These road segments are located to the right side of road no.60, Qafë Kashar - Rinas (Airport) across the rural area.

They are single carriageway segment.
 The asphalt layers' conditions are good.
 The side ditches and culverts need partial cleaning.
 The road signs and safety need upgrade and partial replacements.
 The road lies in a field terrain with one carriageway, without winter maintenance.
 The required level of service is "good".

