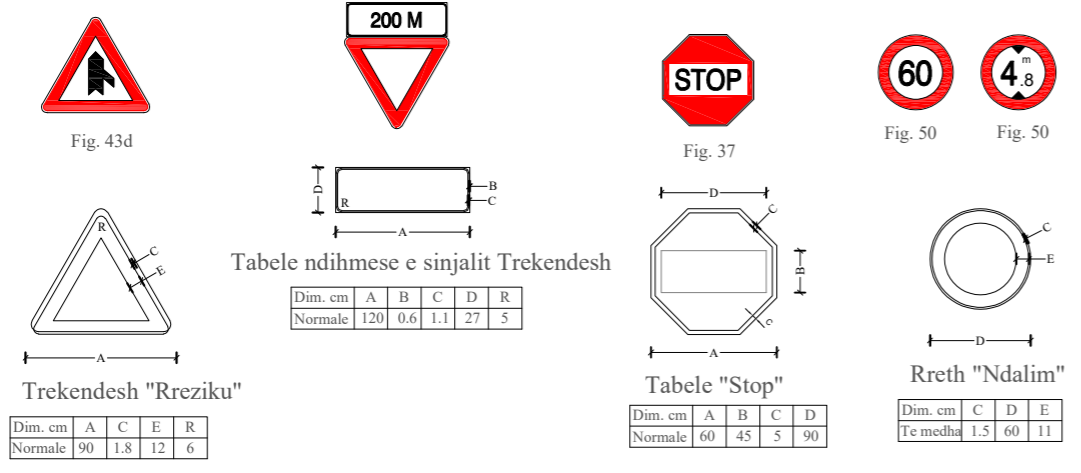


Detaje Teknike

DETAJE TE SINJALISTIKES VERTIKALE

DETAJE TE DELINEATOREVE



Tabele ndihmese e sinjalit Trekendesh

Dim. cm	A	B	C	D	R
Normale	120	0.6	1.1	27	5

Tabele "Stop"

Dim. cm	A	B	C	D
Normale	60	45	5	90

Rreth "Ndalim"

Dim. cm	C	D	E
Te medha	1.5	60	11

Drejtkenesh "Treguese" - per destinacionet pergjate rruges

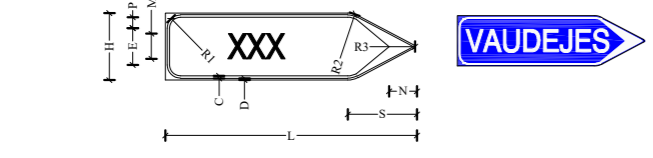
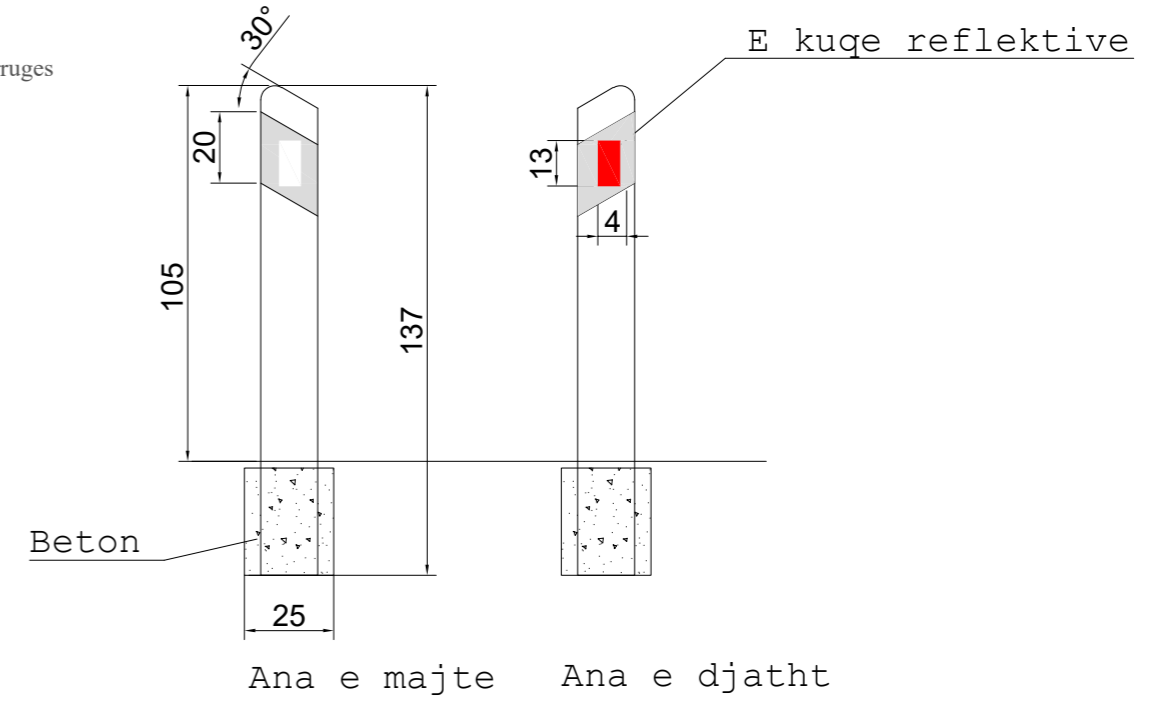
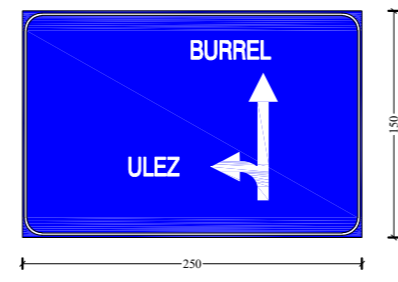
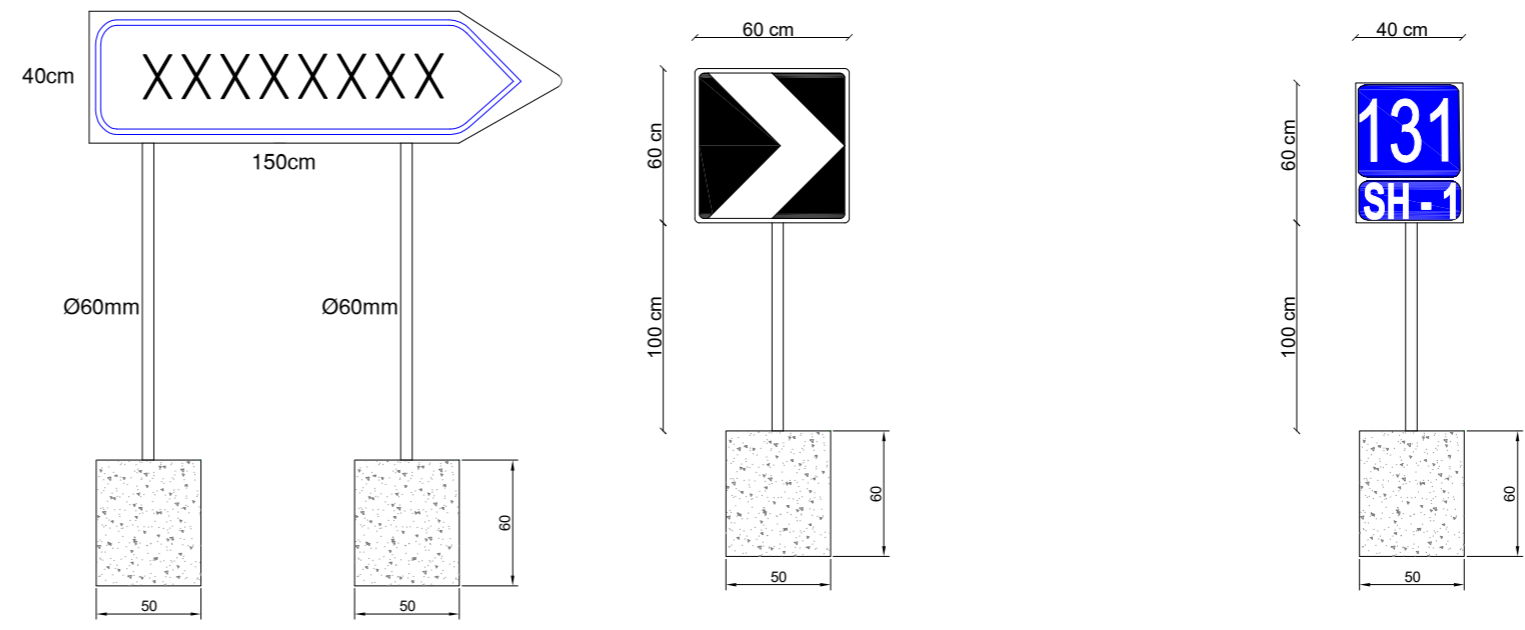


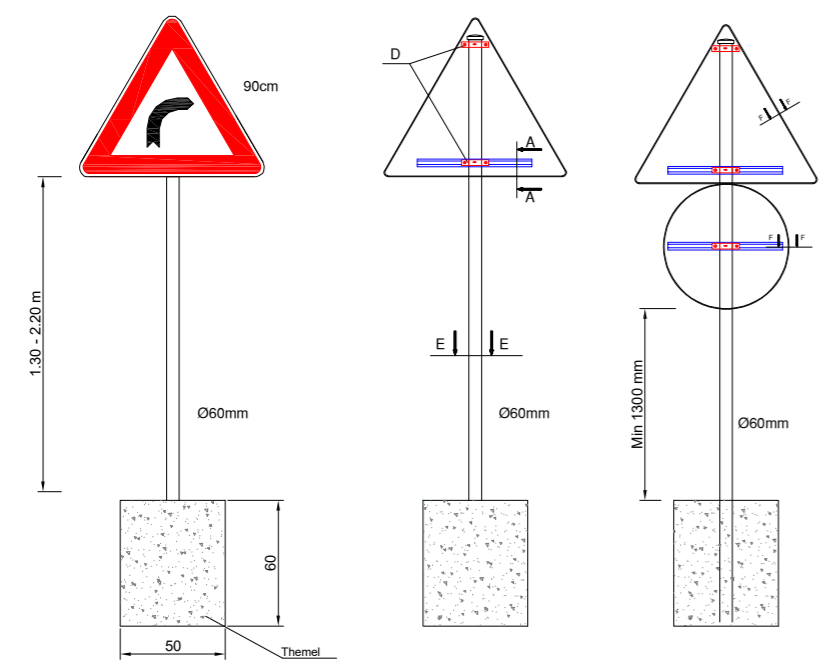
Tabela II 14 - Sinjali i drejtimt extraurban

Dim. cm	C	D	E	H	L	M	N	R1	R2	R3	P	S
Normale	1.8	1.2	22	40	150	18	15.5	8	13	1	6.5	38

TABELA SHIGJETE



DETAJ I VENDOSJES SE TABELAVE ME NJE KEMBE



Shenim 1

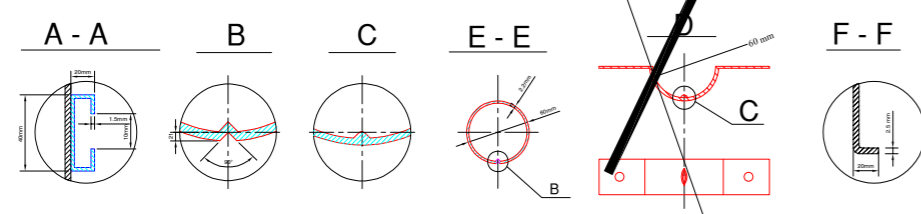
Tabelat e rruges kryesore do te vendosen te permasave normale

Shenim 2

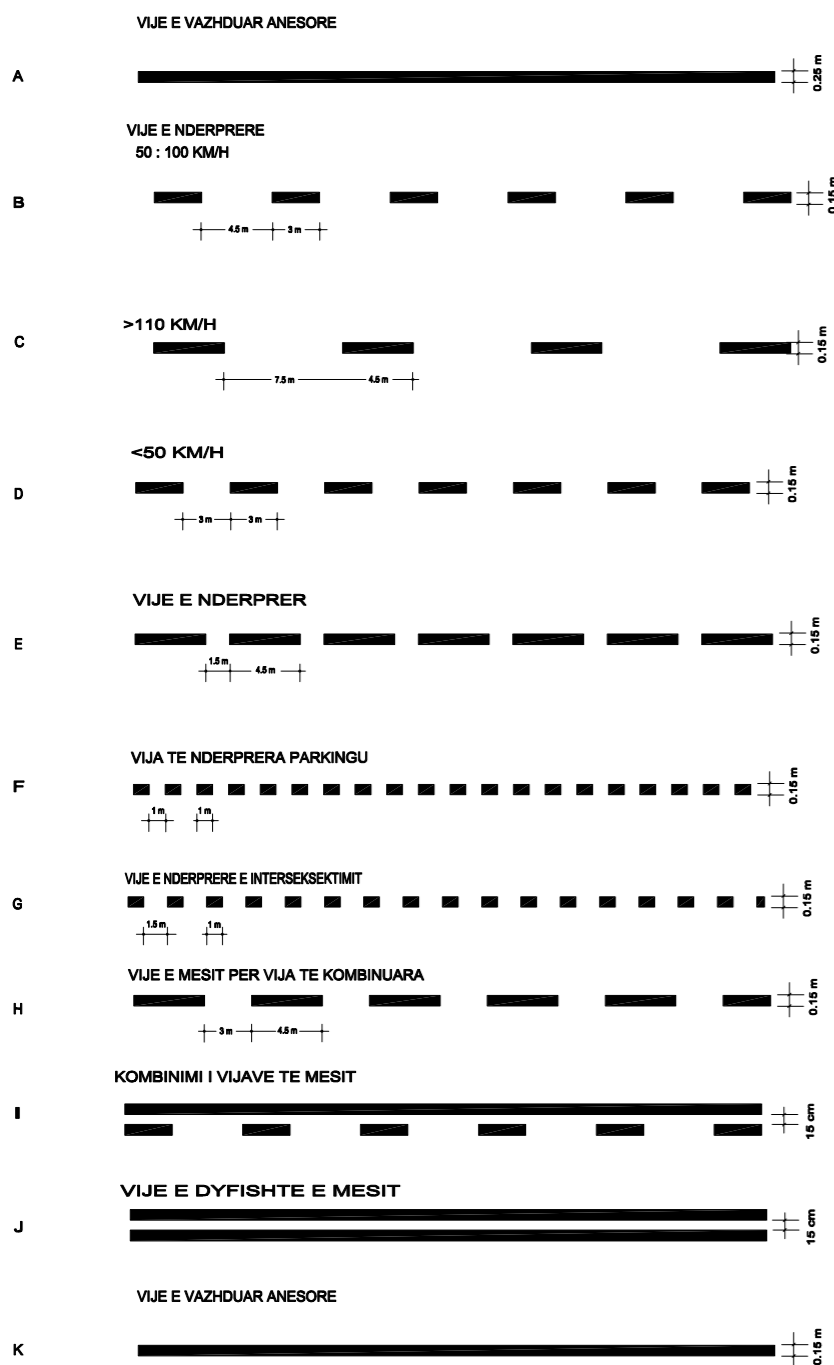
Shenjat vertikale rrugore te rruges vendosen ne nje distance prej 25cm larg guardrail-it. Ne rastet kur nuk ka guardrail vendoset ne nje distance 0.5m nga fundi i rruges.

Shenim 3

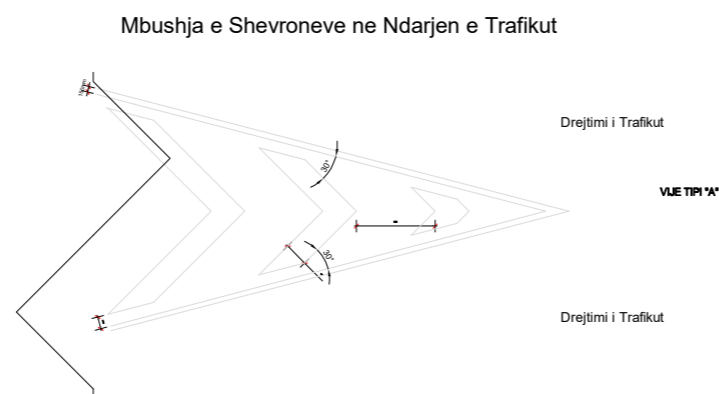
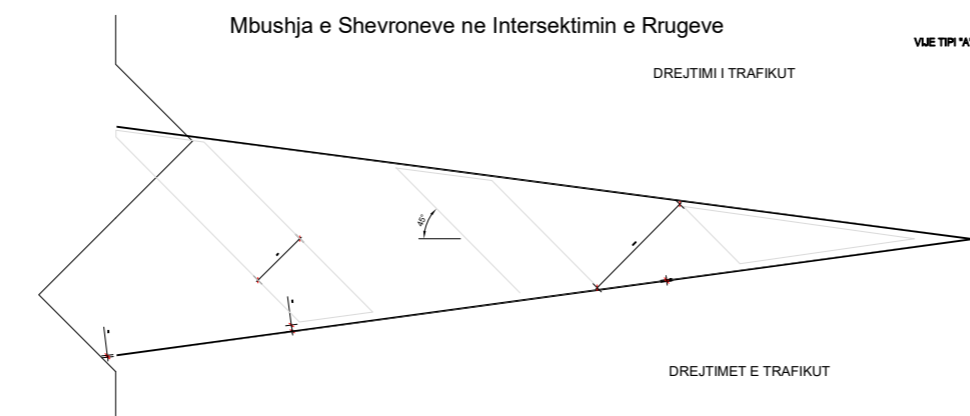
Shenjat rrugore per nga forma, madhesia, ngjyra reflektiviteti duhet te jene sipas Kodit Rrugor te Republikes se Shqiperise. Ne rruge interurbane materiali praparefektiv do te jete i Klasit 1. Shenja rrugore do te realizohet me llamarine celiku me spesor 1.0 mm e cila eshte e Certifikuar.



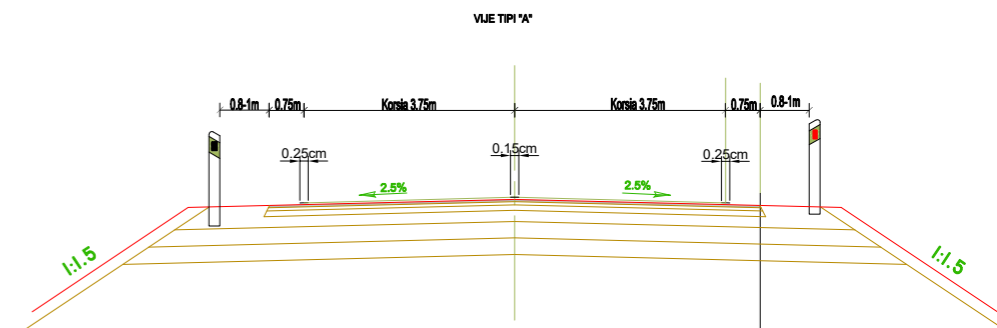
TIPET E VIJAVE



VIJEZIMET E SHEVRONEVE



Prerje Terthore Tipi i vijeimit



VIJEZIMI RRUGOR

