

RELACIONI ARKITEKTONIK

OBJEKTI : "DUA TE LUAJ"

"NDERHYRJE PER PERMIRESIMIN E HAPSIRAVE PUBLIKE

TE DESTINUARA PER AKTIVITETE REKREATIVE DHE

SPORTIVE" GJIROKASTER



Projektues: ARKONSTUDIO SH.P.K.



Porosites: "FONDI SHQIPTAR I ZHVILLIMIT"

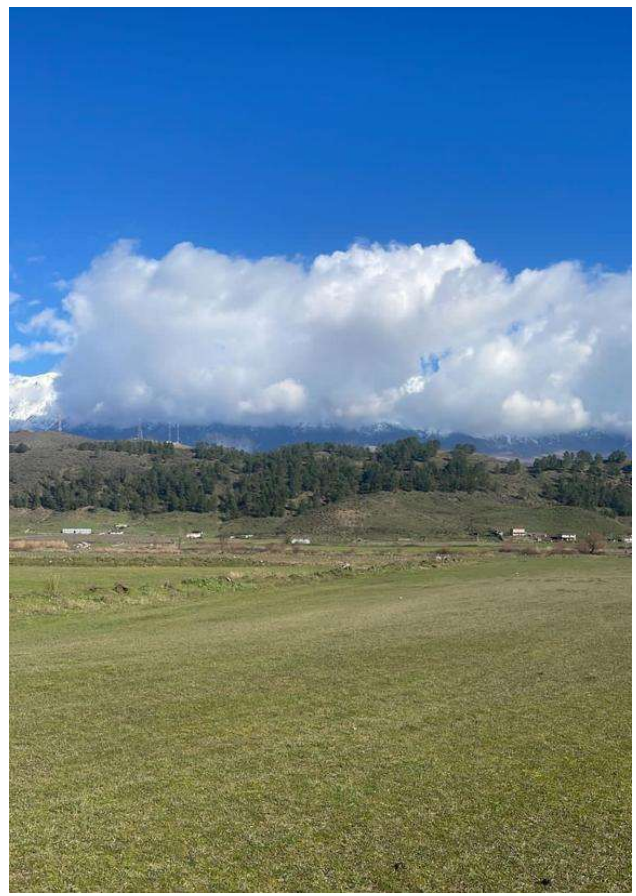
INFORMACIONE DHE TE DHENA PER PROJEKTIN

▪ POZICIONIMI I OBJEKTIT

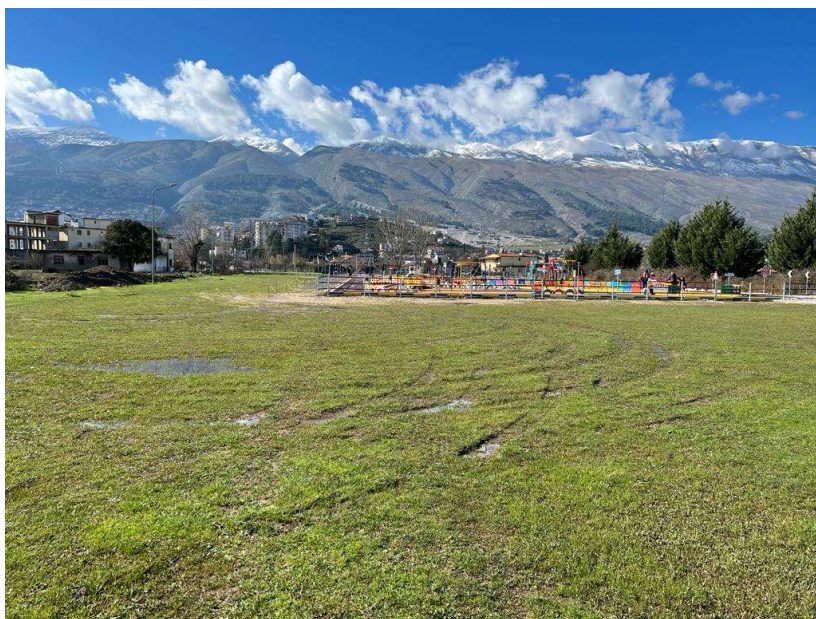
Sheshi pozicionohet ne pjesen lindore te qytetit te Gjirokastrës. Pista aktualisht eshte ne siperfaqje te rrafshet dhe ne nje piste historike ekzistuese aviacioni, ku do te propozohen nderhyrjet per ta rifunksionalizuar kete hapsire, duke lejuar fluturimin e mjeteve ultralight dhe freeflight ne aktivite te ndryshme.



FOTO TE GJENDJES EGZISTUESE



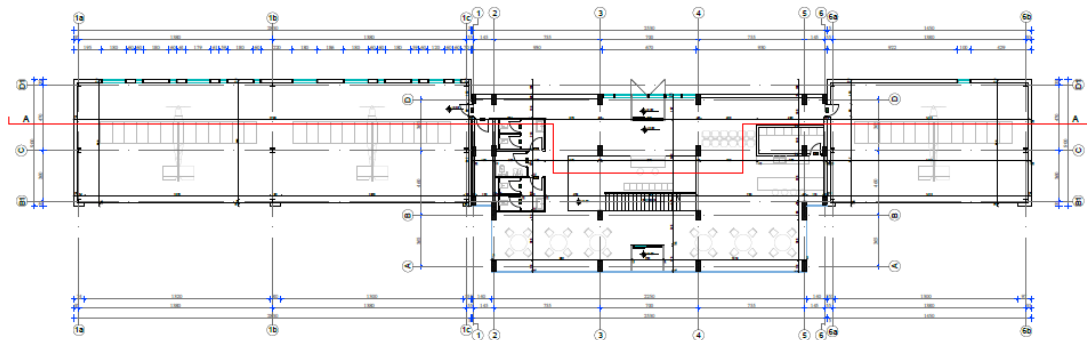
- Gjendja ekzistuese e sheshit eshte boshe dhe per momentin eshte jofunksional. Ne hyrje te zones, me akses direkt nga rruga ndodhet nje kend lojerash ekzistues, te cilin do e marrim parasysh qe te mos e cenojme gjate projektimit



PROJEKTI I OBJEKTIT TE HANGAREVE + ADMINISTRATES

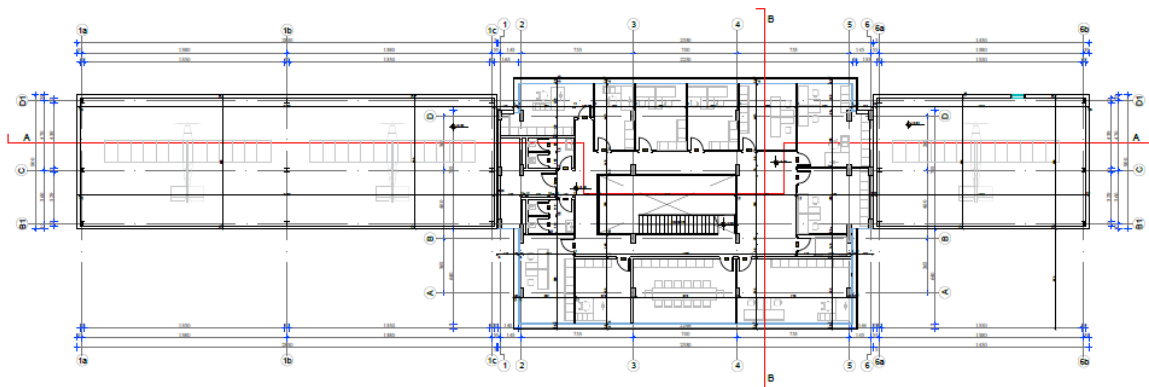
Ne katin perdhe te objektit ndodhen hapsirat per hangare dhe servis per 3 avione ultralight , si dhe ne pjesen qendrore do te kemi pjesen e hollit me reception dhe shkallet qe te ngjisin ne katin e pare, do te kemi nyjet higjenosanitare dhe depo si edhe nje snack bar ne open space me nje kuzhine te vogel ne sherbim te saj.

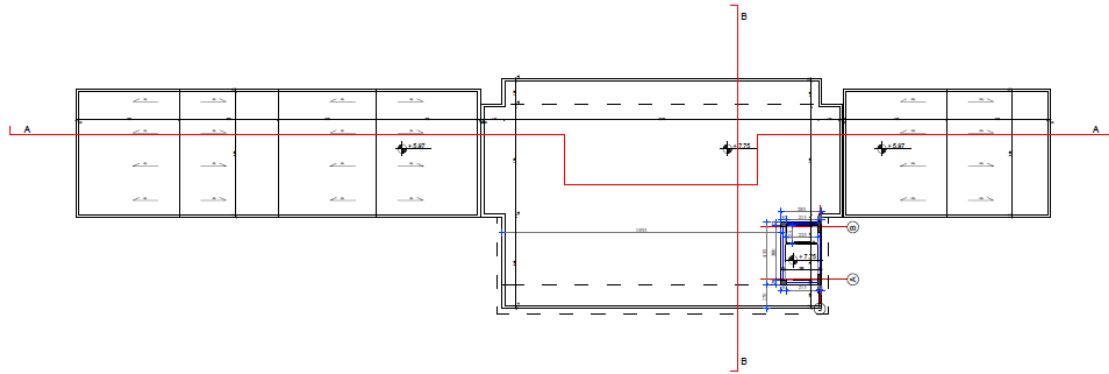
Planimetria e katit perdhe
Godina e sherbimeve



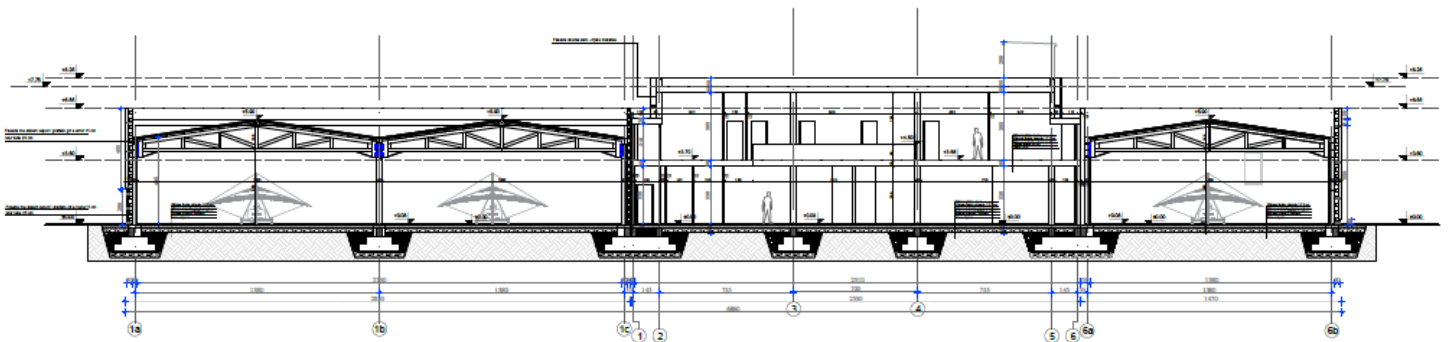
Ne katin e pare, ne pjesen qendrore do te kemi 10 ambiente qe do te sherbejne per klase/zyra , nje salle mbledhjesh si edhe nyjet higjenosanitare + ambientet ndihmese.

Planimetria e katit te pare
Godina e sherbimeve

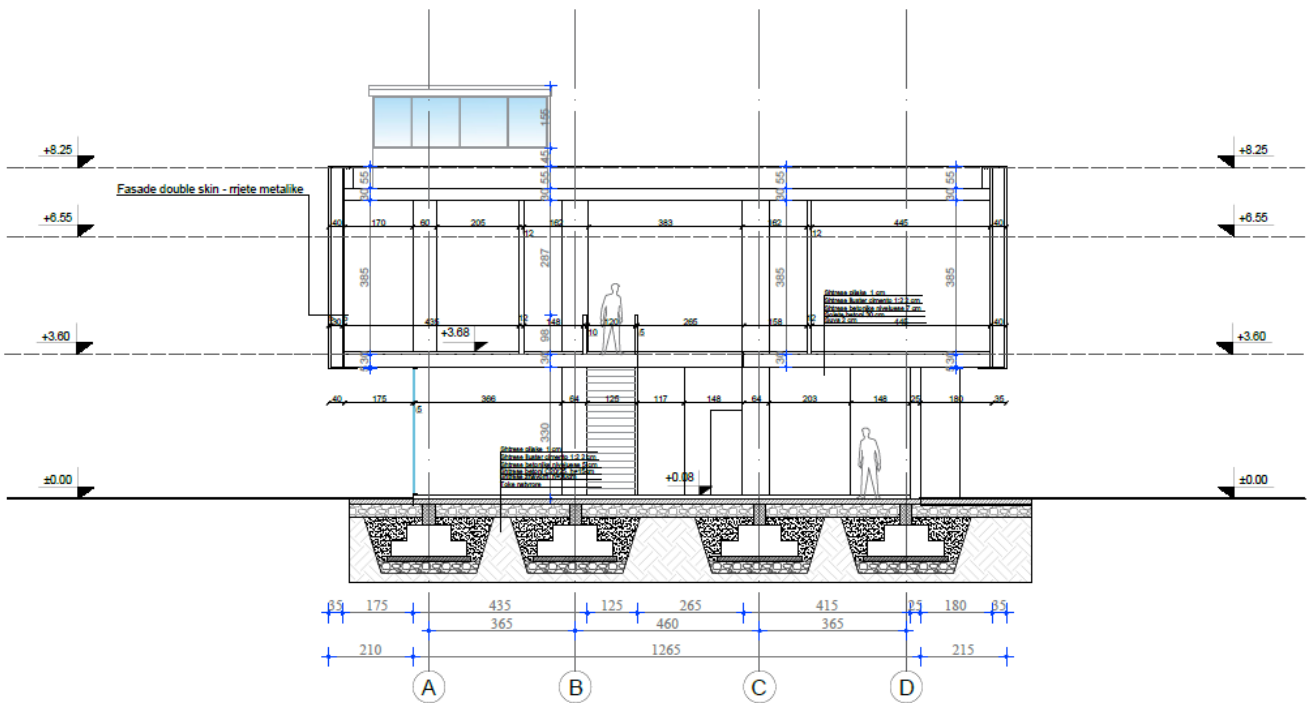




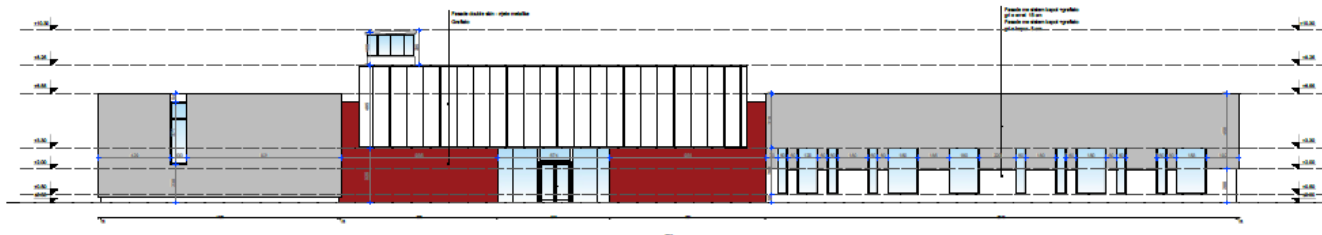
Prerja A-A



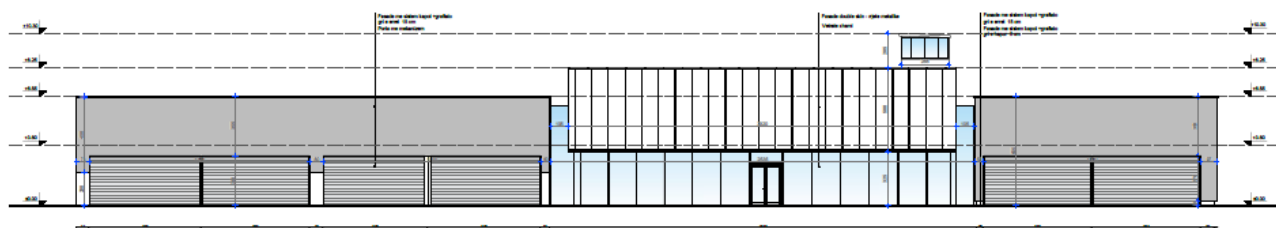
Prerja B-B



Fasada 1

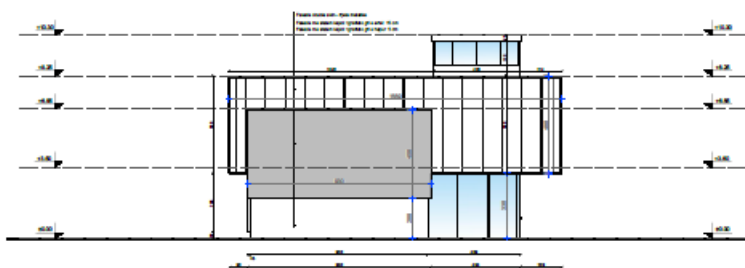


Fasada 3

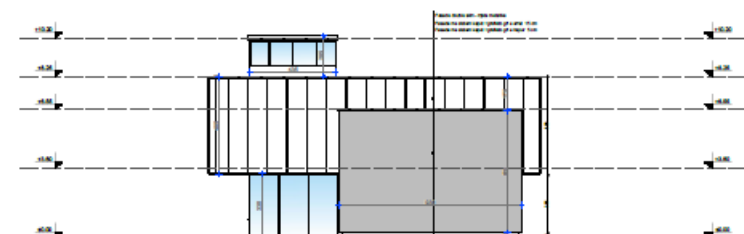


Fasada do te jete e realizuar ne pjesen e hangareve me mure tulle dhe veshje me sistem kapote, ndersa pjesa e portave hyrese te avioneve me porta elektrike. Ndersa pjesa qendore do te kete fasade xhami dhe veshje me double skin, me strukture dhe panele metalike ne katin e pare. Kulla e vrojtimit do te dali mbi nivelin e katit te pare. Do jete nje hapsire e vogel e pozicionuar me pamje nga pista.

Fasada 2

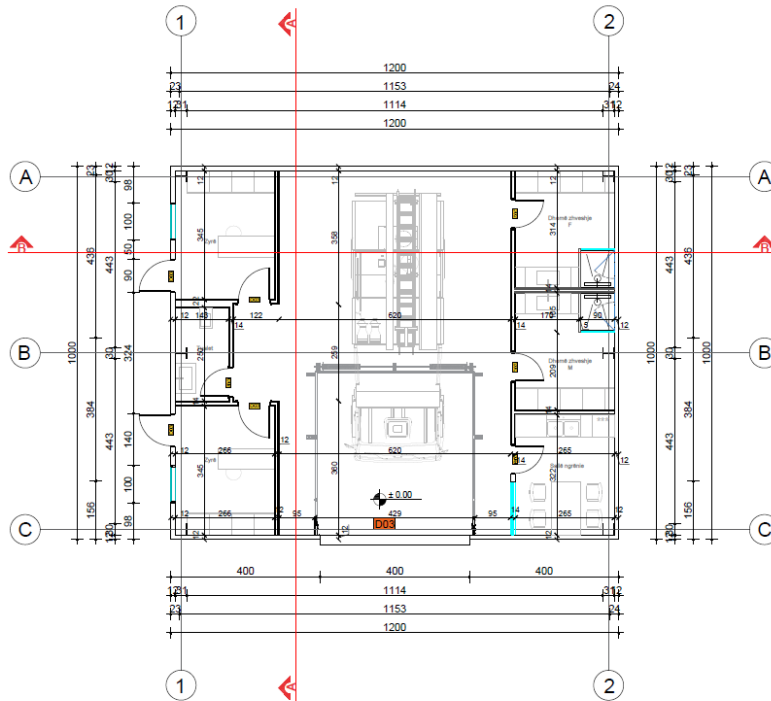


Fasada 4



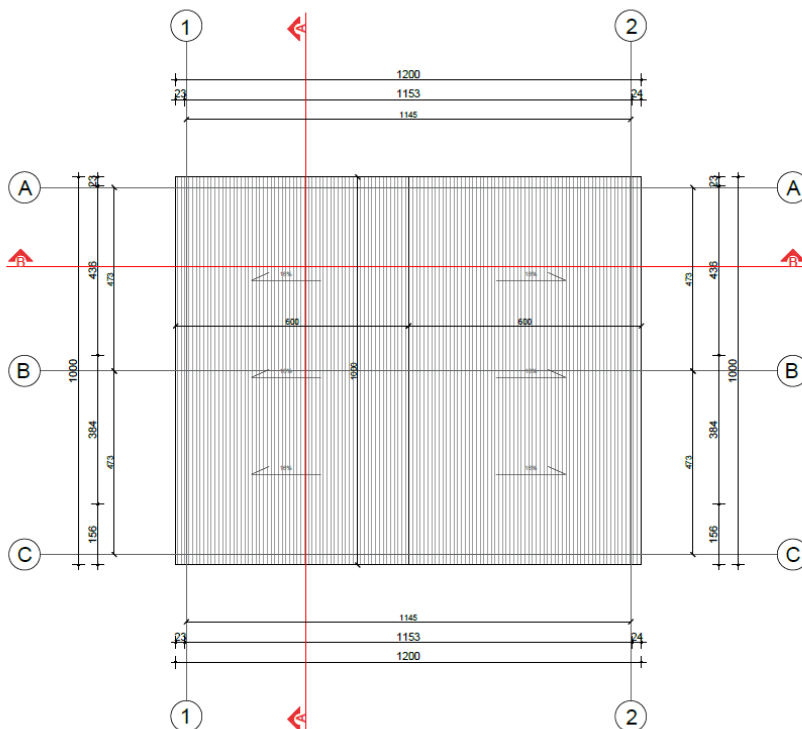
PROJEKTI ARKITEKTONIK KAPANONI I ZJARRFIKESES

Planimetria e katit perdhe

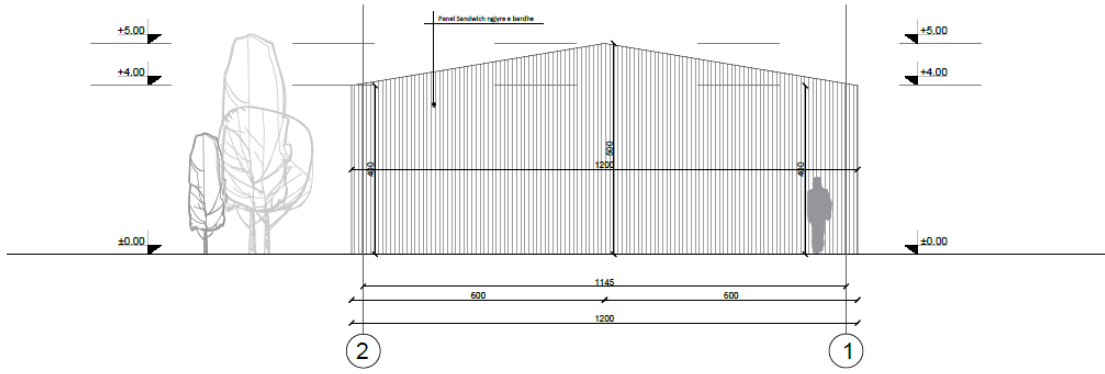


Ne katin perdhe kemi hapsiren per akomodimin e zjarrfikeses , 2 zyra , nje tualet , 2 dhoma zhveshje dhe nje hapsire per ngrenie per stafin.

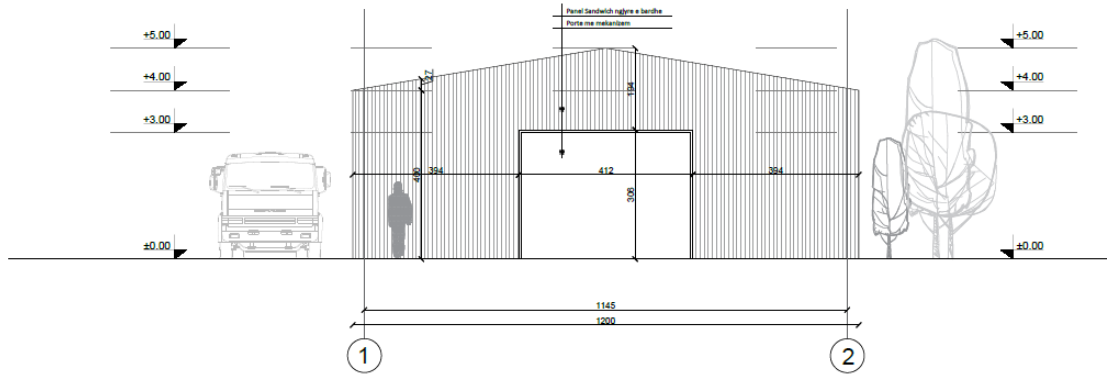
Planimetria e mbulimit



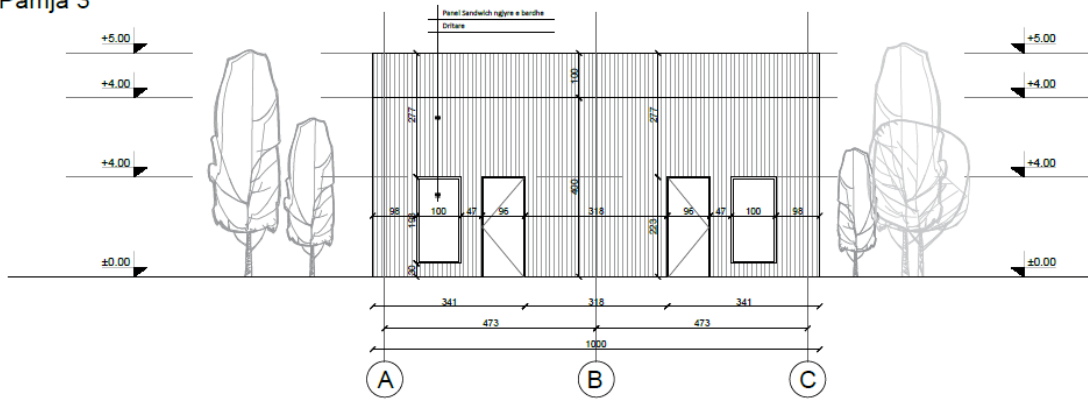
Pamja 1



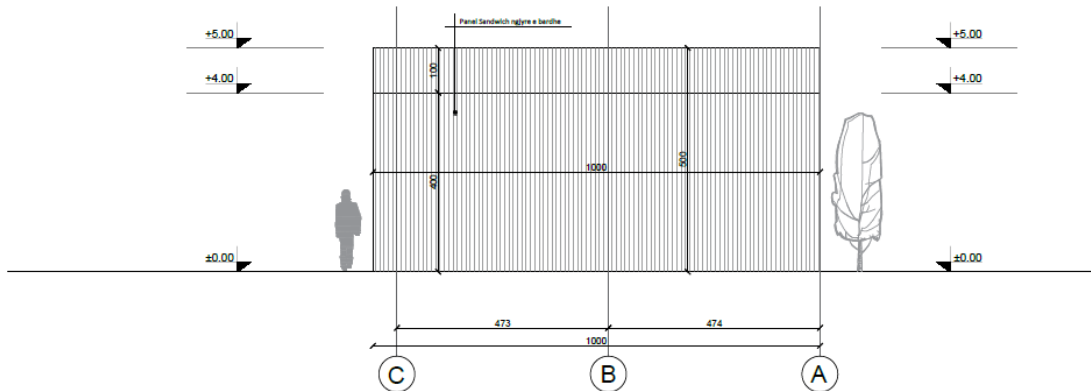
Pamja 2



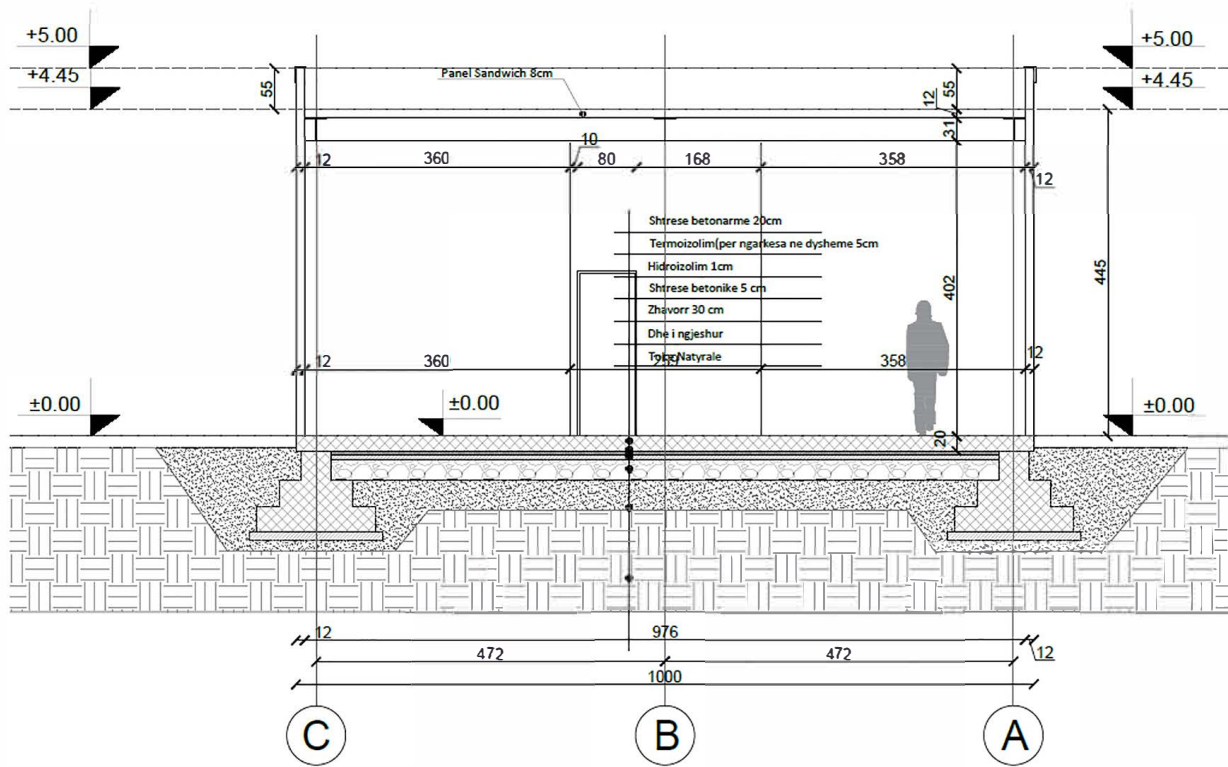
Pamja 3



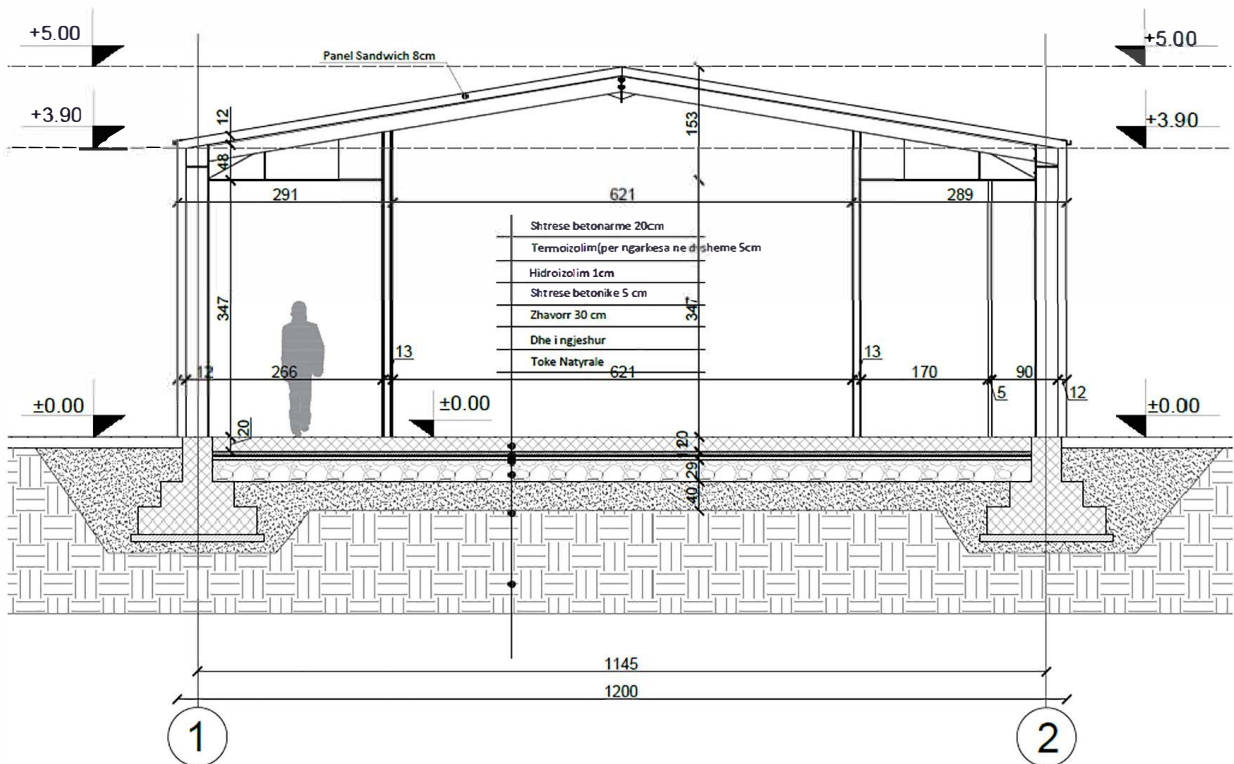
Pamja 4



Prerja A-A



Prerja B-B



IMAZHE 3D





