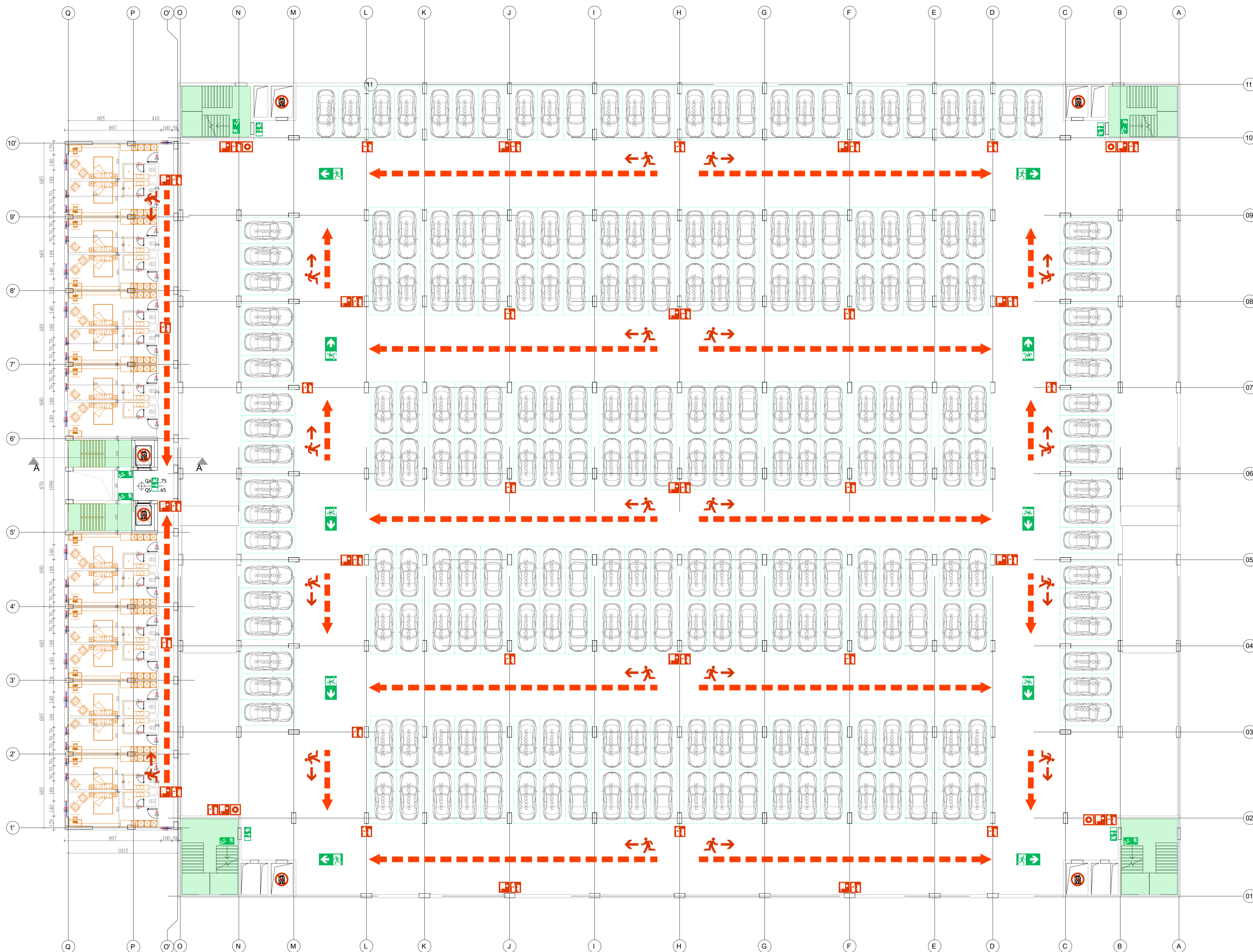


# KATI +4



	DREJTIM EVAKUIMI EVACUATION DIRECTION		PIKE GRUMBULLIMI ASSEMBLY POINT
	DREJTIM DALJE EMERGJENCE EMERGENCY OUTLET DIRECTION		DREJTIM ZBRITJE / NJALJE SHKALLE EMERGJENCE DIRECTION FOR DESCENDING / ASCENDING EMERGENCY STAIRS
	FIKES ZJARRI ME UJE DN45 WATER FIRE EXTINGUISHER DN45		FIKES ZJARRI ME PULUR DRY POWDER FIRE EXTINGUISHER
	KLASA A DERRASE LETER, PLASTIKE, TEKSTILE CLASS A WOOD, PAPER, PLASTIC, TEXTILE		KLASA B MATERIALE TE LESHGJESHME CLASS B: FLAMMABLE LIQUID MATERIALS
	PULSANT I ALARMIT TE ZJARRIT FIRE ALARM BUTTON		DISTANCA DERI DALJEN ME TE AFERT - 20 m - DISTANCE TO THE NEAREST EXIT
	NDALOHEJ PERDORIMI I UJIT PER FIKJE TE ZJARRIT IT IS PROHIBITED TO USE WATER TO EXTINGUISH THE FIRE		NDALOHEJ PERDORIMI I ASHENSORIT NE RAST ZJARRI THE USE OF ELEVATORS IS PROHIBITED IN THE EVENT OF A FIRE
	RREZIK NGA TENSIONI DANGER FROM ELECTRICAL VOLTAGE		KUDES! ATTENTION!
	DERE KUNDER ME QENDRUESHMERI KUNDER ZJARRIT FIRE-RESISTANT DOOR		STRUKTURA KUNDER ME QENDRUESHMERI STRUCTURAL INTEGRITY REI 90/120 MIN FIRE-RESISTANT REI 60/90/120 MINUTE

### PROCEDURA QE DUHET TE NDIQET NE RAST EMERGJENCE:

1. RUANI QETESNE DHE EVITONI TRANSPARENTIMIN E PANIKUT TE PERSONAT E TJERE.
2. NJOFTONI SKUADREN E ZJARRFIKESIVE DHE SHERBIMIN E URGJENCES SIPAS NUMRAVE TE CAKTUAR TE KONTAKTIT.
3. EVAKUONI MENJEHERE NDERTESEN DUKE PERDORUR DALJET E PERCAKTUARA NE PLANIN E EVAKUIMIT TE GODINES.
4. OPRONI NDJEPME PERSONAVE QE NDJEHEN NE VESHITRESI NESE JENI TE BINDUR QE NUK PREEKONJENI EDHE VETE.
5. DUKU NDJEKUR SINJALISTIKEN E SIGURISE, LARGOHUNI QETESISHT JASHE GODOINES.
6. KUSHTOJUNI VENDEJVE SINJALISTIKES SE SIGURISE, NE MENYRE QE TE NDIQNI RRUGEN ME TE SHKURTER PER TE DALE JASHE GODOINES.
7. POZICIONOHUNI NE PIKAT E PERCAKTUARA TE GRUMBULLIMIT JASHE GODOINES NE MENYRE QE TE MOS PENGONI SKUADREN E SHPETIMIT POR EVENTUALISHT TI OPRONI INFORMACIONI TE NEVOJSHEM.
8. MOS TENDONI TE HYNI SERISH NE GODOINE DERI SA GJENDJA TE KTHEHET NE NORMALITET DHE MOS TE KETE ME RREZIK.

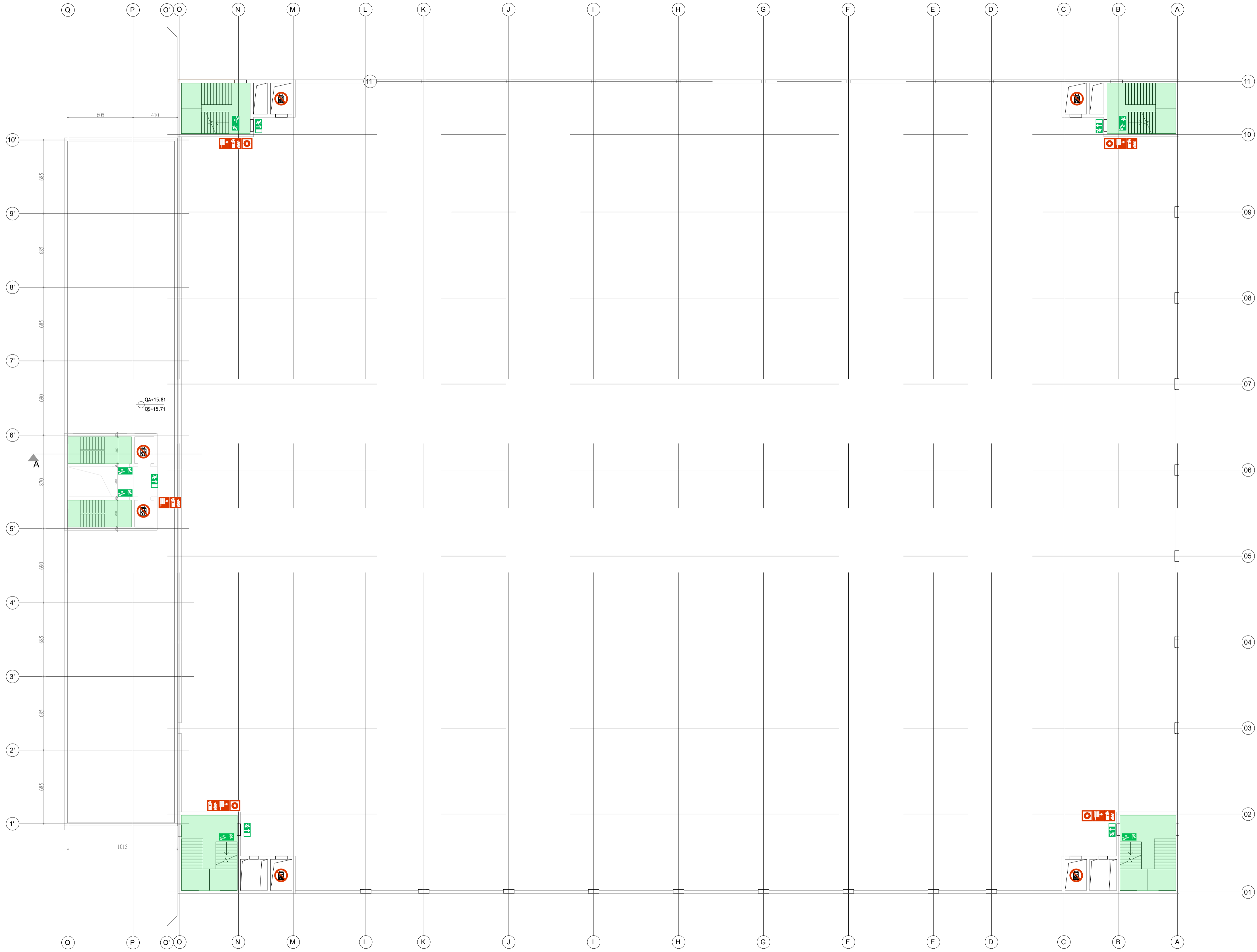
### EMERGENCY PROCEDURE TO FOLLOW IN CASE OF FIRE:

1. REMAIN CALM AND AVOID SPREADING PANIC TO OTHERS.
2. NOTIFY THE FIRE BRIGADE AND EMERGENCY SERVICES USING THE DESIGNATED CONTACT NUMBERS.
3. IMMEDIATELY EVACUATE THE BUILDING USING THE EXITS SPECIFIED IN THE BUILDING'S EVACUATION PLAN.
4. ASSIST INDIVIDUALS IN DISTRESS IF YOU ARE CERTAIN IT DOES NOT PUT YOU AT RISK.
5. FOLLOW THE SAFETY SIGNAGE AND CALMLY EXIT THE BUILDING.
6. PAY ATTENTION TO THE SAFETY SIGNALS TO FOLLOW THE SHORTEST ROUTE OUT OF THE BUILDING.
7. ASSEMBLE AT THE DESIGNATED ASSEMBLY POINTS OUTSIDE THE BUILDING TO AVOID OBSTRUCTING THE RESCUE TEAM AND PROVIDE NECESSARY INFORMATION IF NEEDED.
8. NOTIFY THE FIRE BRIGADE AND EMERGENCY SERVICES USING THE DESIGNATED CONTACT NUMBERS.

**JO PER ZBATIM**  
**NOT FOR CONSTRUCTION**

00	Shator 2024	Projekt Leje / Permitting Design	
RISH NR. REV. NO.	DATA	QELIMI I DOREZIMIT PURPOSE OF ISSUE	SHENIM / PERSHKRIM REMARK / DESCRIPTION
INVESTITORI CONTRACTING AUTHORITY	<p><b>FONDI SHQIPTAR I ZHVILLIMIT</b></p>		
KONSULENTI INXHINIERIK ENGINEERING CONSULTANT	<p><b>ICE</b> ILLYRIAN CONSULTING ENGINEERS Adresa Rr. "Sami Frasheri", Pallati "Bjeshk", Kati 11, Tirane, SHQIPËRI Tel: +355 488 572, Email: info@ice.al</p>		
Pergatiti / Prepared by:	Arktekt / Architect	Bledi Saraci	A.2173
	Ing. Strukturalist / Structural Eng.	Anila SPAHIU	K.1068/4
	Ing. Strukturalist / Structural Eng.	Aida VOKA	K.1340/2
	Ing. Hidroteknik / Hydraulic Eng.	Artjola ZOTAJ	
	Ing. Hidroteknik / Hydraulic Eng.	Silvia GJONAJ	
	Ing. Hidroteknik / Hydraulic Eng.	Anxhela BICI	
	Ing. Elektrik / Electrical Eng.	Enis HAVERIKU	E.1450
	Ing. Elektrik / Electrical Eng.	Iber PUCI	
	Ing. Mekanik / Mechanical Eng.	Marsel PYLLA	M.1288/1
Kontrollori / Checked by:	Ing. Mekanik / Mechanical Eng.	Besnik KARAJ	M.0256/2
	Koordinator Projekti / Project Coordinator	Abdurrahman SPAHIU	K.1571/5
	Ing. Strukturalist / Structural Eng.	Taulant KARRIQI	K.1547/6
	Ing. Elektrik / Electrical Eng.	Emrira BERSHA	E.0550/4
Mirato / Approved by:	Drejtes Project Manager	Olset HAXHIU	K.1619/5
TITULLI I PROJEKTTIT PROJECT TITLE			
<p><b>NDERTIMI I GODINES SE PARKIMIT MULTIFUNKSIONAL ME SHUME NIVELE NE QENDREN SPITALORE UNIVERSITARE "NENE TEREZA" TIRANE (QSUT)</b> <b>CONSTRUCTION OF THE MULTI-LEVEL MULTI-FUNCTIONAL PARKING BUILDING AT THE UNIVERSITY HOSPITAL CENTER "MOTHER TERESA" TIRANA (QSUT)</b></p>			
EMRI I DOKUMENTIT DOCUMENT TITLE			
<p><b>PLANI I EVAKUIMIT NE RAST EMERGJENCE NDAJ ZJARRIT</b> <b>PLANI I KATIT +4</b></p>			
FAZA E PROJEKTTIT PROJECT PHASE	Nr. i Dokumentit Document No.	Shkalla Scale	Rishikimi Review
PROJEKT LEJE / PERMITTING DESIGN		1:200	00
	Perrmasa e fletes Page Size		Fieta Page No.
	A1 (841x594mm)		M.2.7

# TARACA



DREJTIM EVAKUIMI EVACUATION DIRECTION	PIKE GRUMBULLIMI ASSEMBLY POINT
DREJTIM DALJE EMERJENCE EMERGENCY OUTLET DIRECTION	DREJTIM ZBRITJE / NGULJE SHKALLE EMERJENCE DIRECTION FOR DESCENDING / ASCENDING EMERGENCY STAIRS
FIKESE ZJARRI ME UJE DN45 WATER FIRE EXTINGUISHER DN45	FIKESE ZJARRI ME PULHUR DRY POWDER FIRE EXTINGUISHER
KLASA A DERRASE LETER, PLASTIKE, TEKSTILE CLASS A: WOOD, PAPER, PLASTIC, TEXTILE	KLASA B MATERIALE TE LESHGJEM CLASS B: FLAMMABLE LIQUID MATERIALS
PULSANT I ALARMIT TE ZJARRIT FIRE ALARM BUTTON	DISTANCA DERI DALJEN ME TE AFERT - 20 m - DISTANCE TO THE NEAREST EXIT
NDALOHEJ PËRDORMI I UJIT PER FIKJE TE ZJARRIT IT IS PROHIBITED TO USE WATER TO EXTINGUISH THE FIRE	NDALOHEJ PËRDORMI I ASHENSORIT NE RAST ZJARRI THE USE OF ELEVATORS IS PROHIBITED IN THE EVENT OF A FIRE
RREZIK NOA TENSIONI DANGER FROM ELECTRICAL VOLTAGE	KUDES! ATTENTION!
DERE KUNDER ME QENDRUESHMERI KUNDER ZJARRIT FIRE-RESISTANT DOOR	STRUKTURA ME QENDRUESHMERI STRUCTURAL INTEGRITY WITH RESISTANCE REI 90 / 60/90/120 MIN

- PROCEDURA QE DUHET TE NDIQET NE RAST EMERJENCE:**
1. RUANI QETESINE DHE EVITONI TRANSPARENTIMIN E PANIKUT TE PERSONAT E TJERE.
  2. NJOFTONI SKUADREN E ZJARRFIKESIVE DHE SHERBIMIN E URGJENCES SIPAS NUMRAVE TE CAKTUAR TE KONTAKTIT.
  3. EVAKUONI MENJEHERE NDERTESEN DUKE PERDORUR DALJET E PERCAKTUARA NE PLANIN E EVAKUIMIT TE GODINES.
  4. OPRONI NDIJME PERSONAVE QE NDJEHEN NE VESHTIRESI NESE JENI TE BINDUR QE NUK RREZIKONENI EDHE VETE.
  5. DUKE NDJEKUR SINJALISTIKEN E SIGURISE, LARGOHUNI QETESHT JASHE GODINES.
  6. KUSHTOJUNI VENHEDJE SINJALISTIKES SE SIGURISE, NE MENYRE QE TE NDIQNI RRUGEN ME TE SHKURTER PER TE DALE JASHE GODINES.
  7. POZICIONOHUNI NE PIKAT E PERCAKTUARA TE GRUMBULLIMIT JASHE GODINES NE MENYRE QE TE MOS PENGONI SKUADREN E SHPETIMIT POR EVENTUALISHT TI OFRONI INFORMACIONI TE NEVOJSHEM.
  8. MOS TENDONI TE HYNI SERISH NE GODINE DERI SA GJENDJA TE KTHEHET NE NORMALITET DHE MOS TE KETE ME RREZIK.

- EMERGENCY PROCEDURE TO FOLLOW IN CASE OF FIRE:**
1. REMAIN CALM AND AVOID SPREADING PANIC TO OTHERS.
  2. NOTIFY THE FIRE BRIGADE AND EMERGENCY SERVICES USING THE DESIGNATED CONTACT NUMBERS.
  3. IMMEDIATELY EVACUATE THE BUILDING USING THE EXITS SPECIFIED IN THE BUILDING'S EVACUATION PLAN.
  4. ASSIST INDIVIDUALS IN DISTRESS IF YOU ARE CERTAIN IT DOES NOT PUT YOU AT RISK.
  5. FOLLOW THE SAFETY SIGNAGE AND CALMLY EXIT THE BUILDING.
  6. PAY ATTENTION TO THE SAFETY SIGNALS TO FOLLOW THE SHORTEST ROUTE OUT OF THE BUILDING.
  7. ASSEMBLE AT THE DESIGNATED ASSEMBLY POINTS OUTSIDE THE BUILDING TO AVOID OBSTRUCTING THE RESCUE TEAM AND PROVIDE NECESSARY INFORMATION IF NEEDED.
  8. NOTIFY THE FIRE BRIGADE AND EMERGENCY SERVICES USING THE DESIGNATED CONTACT NUMBERS.

**JO PER ZBATIM**  
**NOT FOR CONSTRUCTION**

00	Shator 2024	Projekt Leje / Permitting Design			
RISH NR. REV. NO.	DATA	QELLLIMI I DOREZIMIT PURPOSE OF ISSUE	SHENIM / PERSHKRIM REMARK / DESCRIPTION		
INVESTITORI CONTRACTING AUTHORITY		<p><b>FONDI SHQIPTAR I ZHVILLIMIT</b></p>			
KONSULENTI INXHINIERIK ENGINEERING CONSULTANT		<p><b>ICE</b> ILLYRIAN CONSULTING ENGINEERS Adresa Rr. "Sami Frasheri", Pallati "Bjesh", Katë 11, Tirane, SHQIPËRI Tel: +355 4 200 572, Email: info@ice.al www.ice.al</p>			
Përgatiti / Prepared by:		Arktekt / Architect	Emri/Name	Nr. Licenses/Licence No.	
Ing. Strukturalist / Structural Eng.		Anila SPAHIU	A.2173		
Ing. Hidroteknik / Hydraulic Eng.		Alda VOKA	K.1068/4		
Ing. Hidroteknik / Hydraulic Eng.		Artjola ZOTAJ	K.1340/2		
Ing. Hidroteknik / Hydraulic Eng.		Silvia GJONAJ			
Ing. Hidroteknik / Hydraulic Eng.		Anxhela BICI			
Ing. Elektrik / Electrical Eng.		Enis HAVERIKU	E.1450		
Ing. Elektrik / Electrical Eng.		Iber PUCI			
Ing. Mekanik / Mechanical Eng.		Marsel PYLLA	M.1288/1		
Ing. Mekanik / Mechanical Eng.		Besnik KARAJ	M.0256/2		
Kontrollori / Checked by:		Koordinatori Projekti / Project Coordinator	Abdurrahman SPAHIU	K.1571/5	
Ing. Strukturalist / Structural Eng.		Taulant KARRIQI	K.1547/6		
Ing. Elektrik / Electrical Eng.		Emrira BERISHA	E.0550/4		
Mirato / Approved by:		Drejtes Project Manager	Olset HAXHIU	K.1619/5	
TITULLI I PROJEKTTIT PROJECT TITLE					
<p><b>NDËRTIMI I GODINËS SË PARKIMIT MULTIFUNKSIONAL ME SHUMË NIVELE NË QENDRËN SPITALORE UNIVERSITARE "NËNË TEREZA" TIRANË (QSUT)</b> <b>CONSTRUCTION OF THE MULTI-LEVEL MULTI-FUNCTIONAL PARKING BUILDING AT THE UNIVERSITY HOSPITAL CENTER "MOTHER TERESA" TIRANA (QSUT)</b></p>					
EMRI I DOKUMENTIT DOCUMENT TITLE					
<p><b>PLANI I EVAKUIMIT NE RAST EMERJENCE NDAJ ZJARRIT</b> <b>PLANI I TARACES</b></p>					
FAZA E PROJEKTTIT PROJECT PHASE	Nr. i Dokumentit Document No.	Shkalla Scale	Rishikimi Review	Përmasa e fletës Page Size	Fleta Page No.
PROJEKT LEJE / PERMITTING DESIGN		1:200	00	A1 (841x594mm)	M.2.8