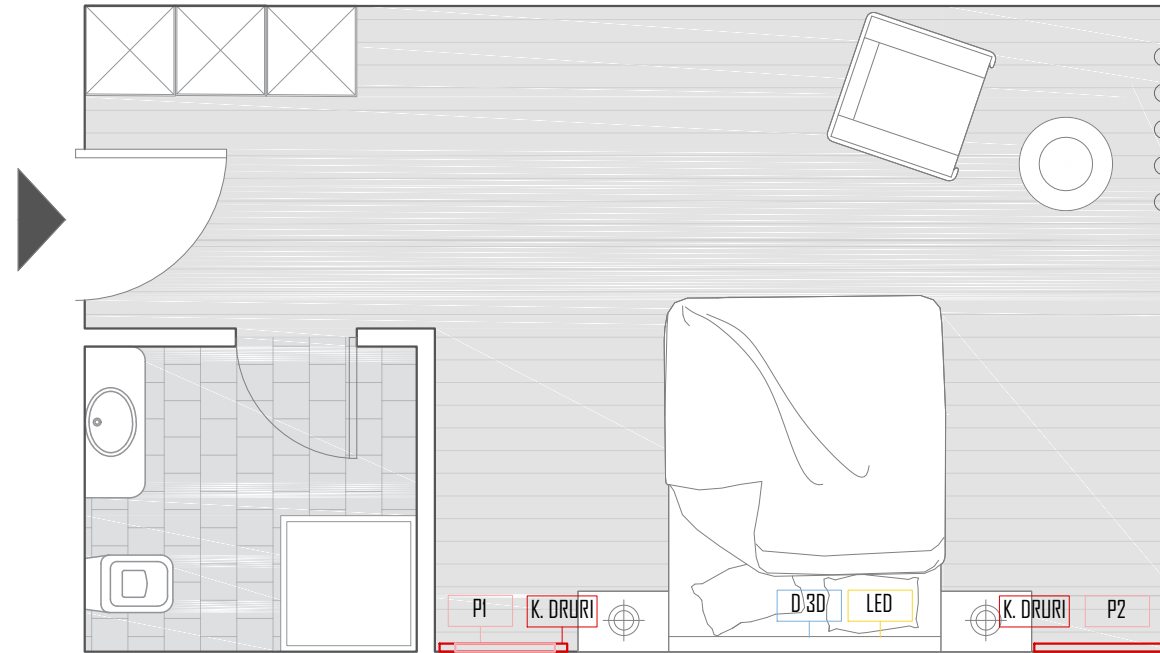
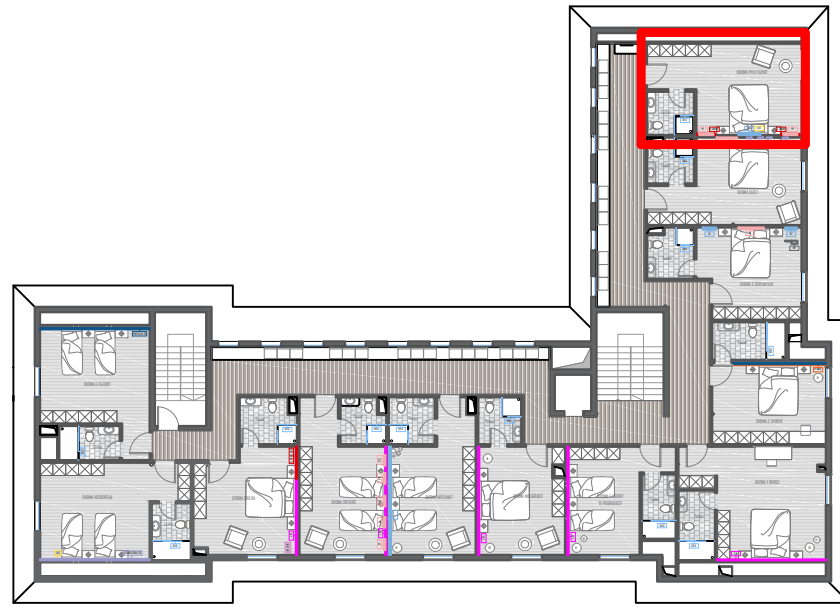


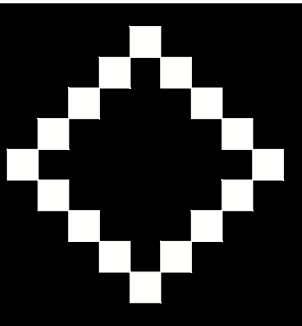
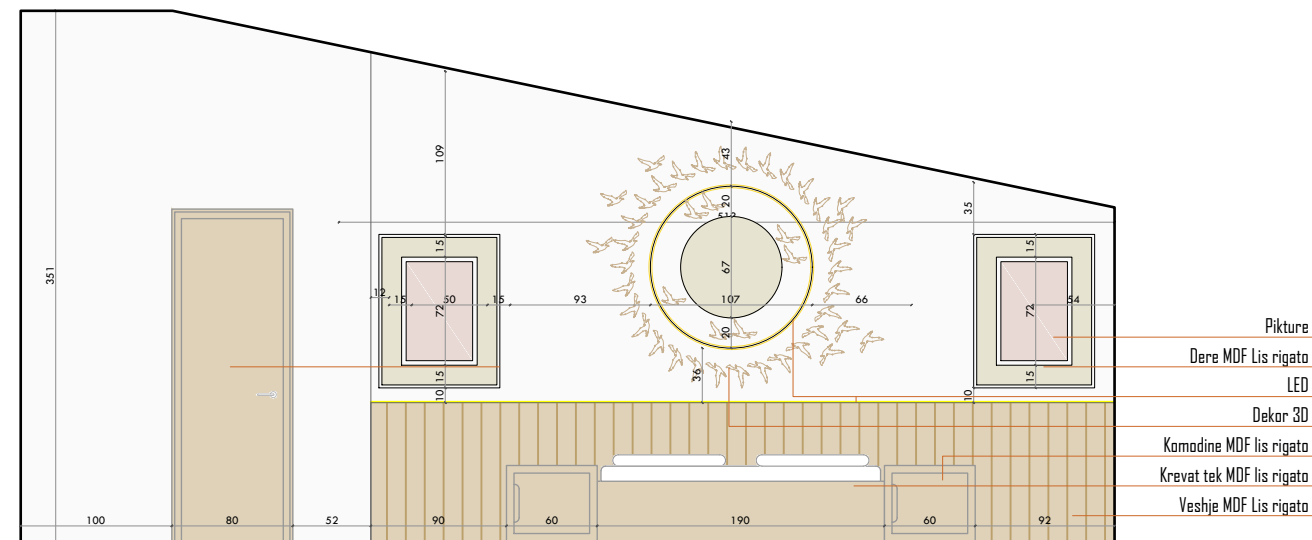
DHOMA E PYLLIT TE FAZANIT



Elemente te shtuar ne cdo dhome

- 01 Leter muri
- 02 Panele druri
- 03 Punim muri mikrociemento
- 04 Punime gipsi altoreliev
- 05 Dekoracion
- 06 Piktura
- 07 Gjelberim (disa nga dhomat)
- 08 Punime ne tualetin e dhomes (shtrim, pllaka, aksesore)

* Skedimi i dhomave do te bazohet mbi serine e vizualizimeve ne projekt



EHC Korçe

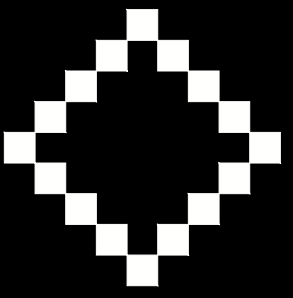
Porositës	
Projektoi	
Arkitekt	E. BEJLERI
Arkitekt	I. BEJLERI
Arkitekt	K. DEMAJ
Arkitekt	R. KERPAÇI
Konstruktor	
Ing. Elektrik	
Ing. Hidroteknik	
Ing. Mekanik	
D305. Plan, prerje	
Shkalla 1:150	A 98



FONDI SHQIPTAR I ZHVILLIMIT



SON



EHC Korce

Porositës	
Projektoi	
Arkitekt	E. BEJLERI
Arkitekt	I. BEJLERI
Arkitekt	K. DEMAJ
Arkitekt	R. KERPAÇI
Konstruktor	
Ing. Elektrik	
Ing. Hidroteknik	
Ing. Mekanik	
D305. Foto	
	A 99

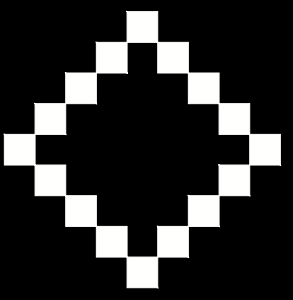


**FONDI SHQIPTAR
I ZHVILLIMIT**



SON





EHC Korce

Porositës	
Projektoi	
Arkitekt	E. BEJLERI
Arkitekt	I. BEJLERI
Arkitekt	K. DEMAJ
Arkitekt	R. KERPAÇI
Konstruktor	
Ing. Elektrik	
Ing. Hidroteknik	
Ing. Mekanik	
D305. Render	
	A 00

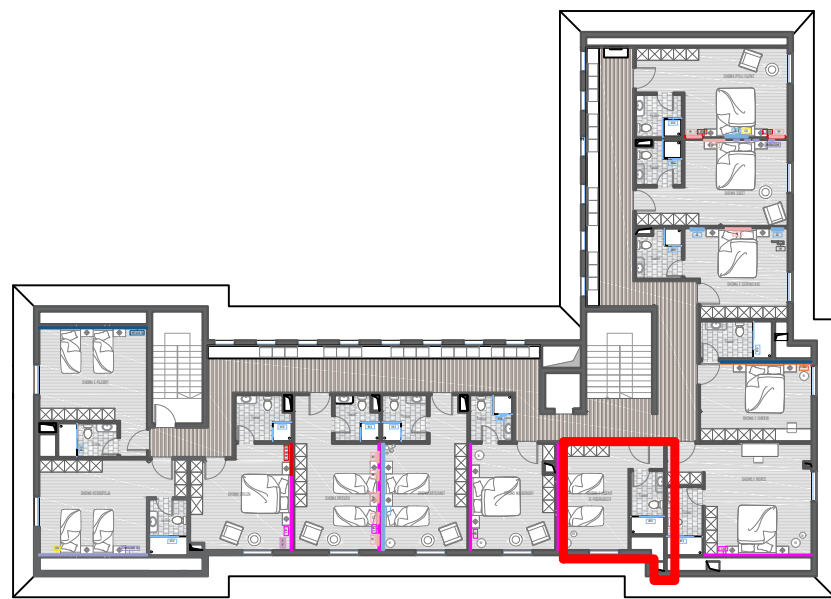


**FONDI SHQIPTAR
I ZHVILLIMIT**



SON

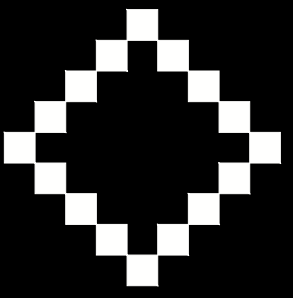
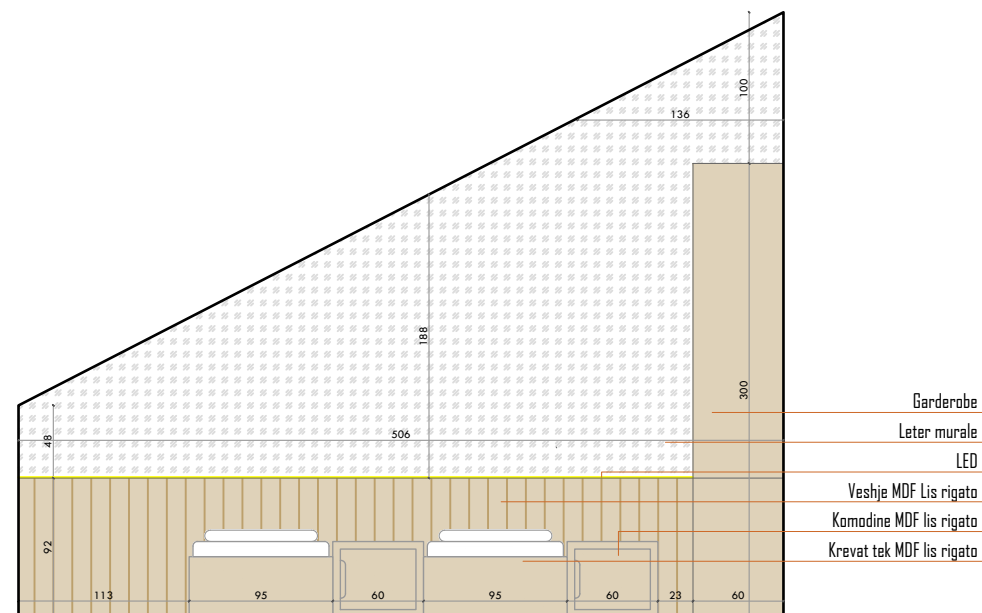
DHOMA E LIQENIT TE POGRADECIT



Elemente te shtuar ne cdo dhome

- 01 Leter muri
- 02 Panele druri
- 03 Punim muri mikroemento
- 04 Punime gipsi altoreliev
- 05 Dekoracion
- 06 Piktura
- 07 Gjelberim (disa nga dhomat)
- 08 Punime ne tualetin e dhomes (shtrim, pllaka, aksesore)

* Skedimi i dhomave do te bazohet mbi serine e vizualizimeve ne projekt



EHC Korçe

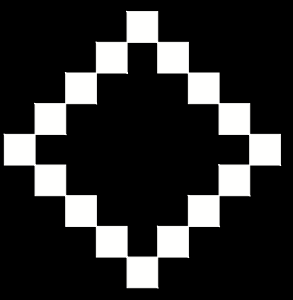
Porositës	
Projektoi	
Arkitekt	E. BEJLERI
Arkitekt	I. BEJLERI
Arkitekt	K. DEMAJ
Arkitekt	R. KERPAÇI
Konstruktor	
Ing. Elektrik	
Ing. Hidroteknik	
Ing. Mekanik	
D306. Plan, prerje	
Shkalla 1:150	A 101



FONDI SHQIPTAR I ZHVILLIMIT



SON



EHC Korce

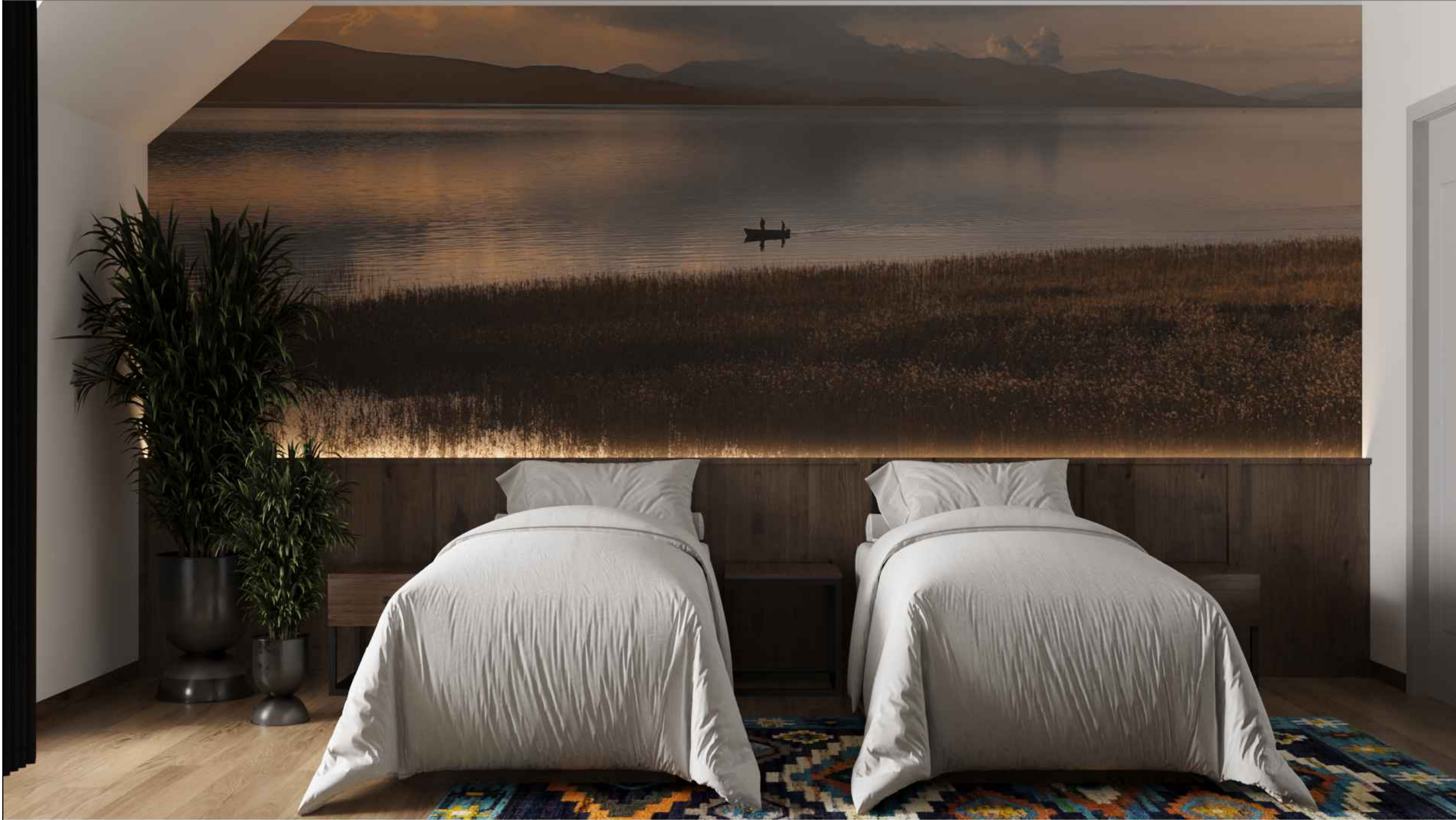
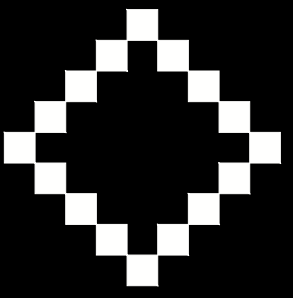
Porositës	
Projektoi	
Arkitekt	E. BEJLERI
Arkitekt	I. BEJLERI
Arkitekt	K. DEMAJ
Arkitekt	R. KERPAÇI
Konstruktor	
Ing. Elektrik	
Ing. Hidroteknik	
Ing. Mekanik	
D306. Foto	
	A 102



**FONDI SHQIPTAR
I ZHVILLIMIT**



SON



EHC Korce

Porositës	
Projektoi	
Arkitekt	E. BEJLERI
Arkitekt	I. BEJLERI
Arkitekt	K. DEMAJ
Arkitekt	R. KERPAÇI
Konstruktor	
Ing. Elektrik	
Ing. Hidroteknik	
Ing. Mekanik	
D306. Render	
	A 103



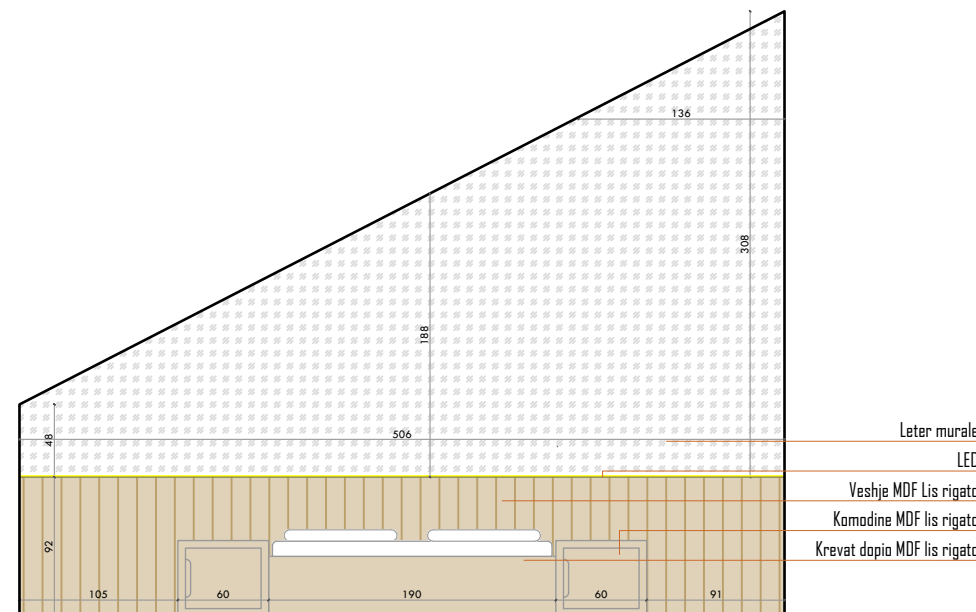
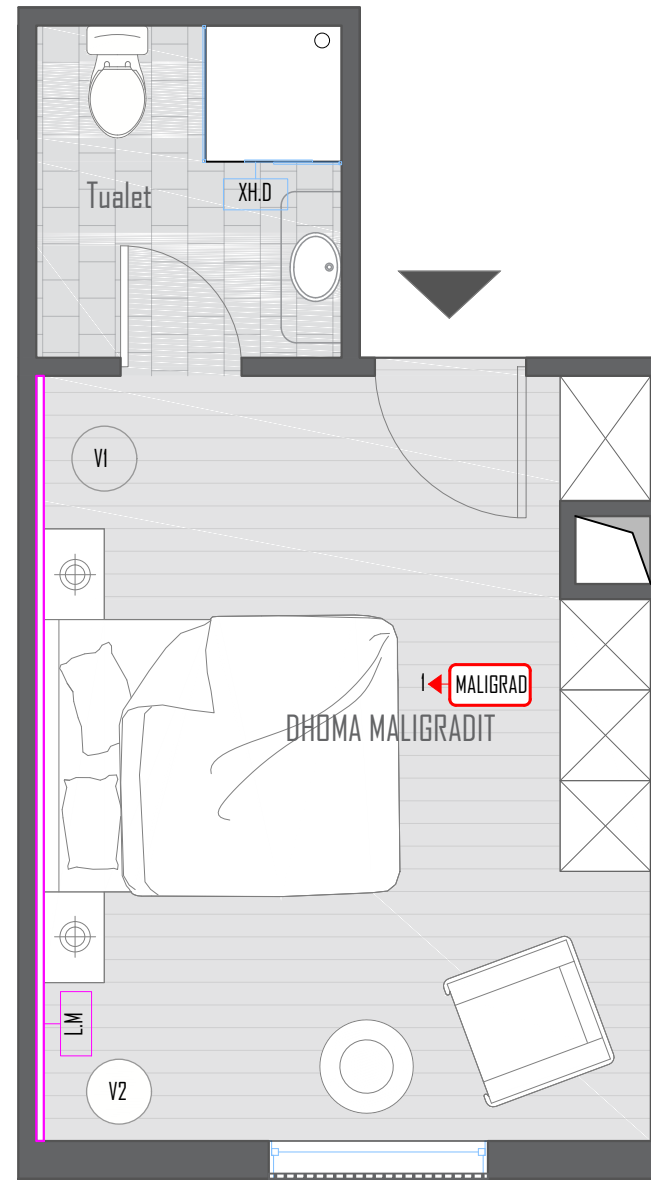
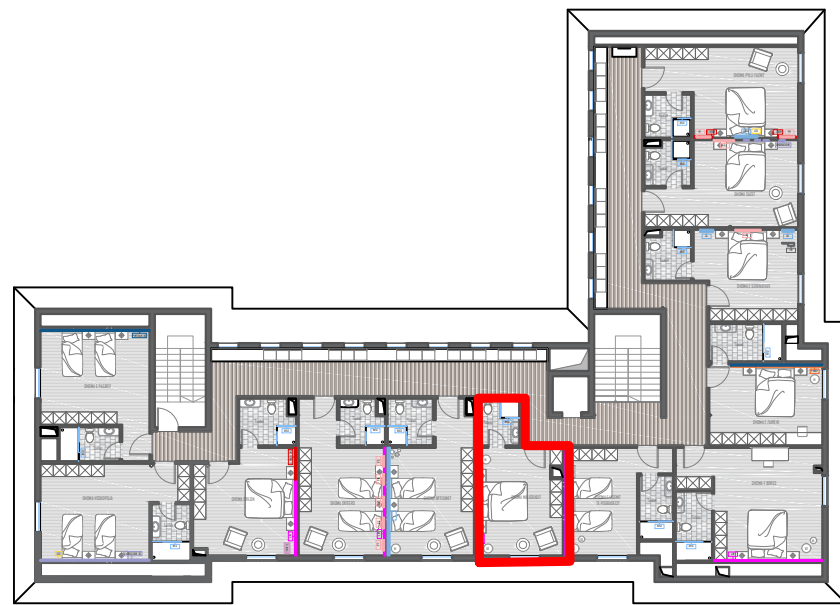
**FONDI SHQIPTAR
I ZHVILLIMIT**



SON

DHOMA MALIGRADIT

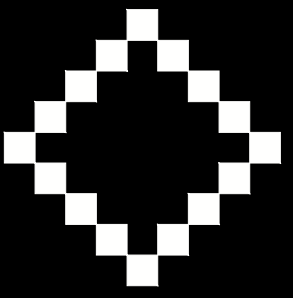
DHOMA MALIGRADIT



Elemente te shtuar ne cdo dhome

- 01 Leter muri
- 02 Panele druri
- 03 Punim muri mikrociemento
- 04 Punime gipsi altoreliev
- 05 Dekoracion
- 06 Piktura
- 07 Gjelberim (disa nga dhomat)
- 08 Punime ne tualetin e dhomes (shtrim, pllaka, aksesore)

* Skedimi i dhomave do te bazohet mbi serine e vizualizimeve ne projekt



EHC Korçe

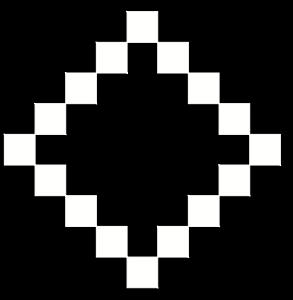
Porositës	
Projektoi	
Arkitekt	E. BEJLERI
Arkitekt	I. BEJLERI
Arkitekt	K. DEMAJ
Arkitekt	R. KERPAÇI
Konstruktor	
Ing. Elektrik	
Ing. Hidroteknik	
Ing. Mekanik	
D307. Plan, prerje	
Shkalla 1:150	A 104



FONDI SHQIPTAR I ZHVILLIMIT



SON



EHC Korce

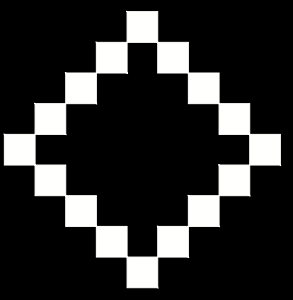
Porositës	
Projektoi	
Arkitekt	E. BEJLERI
Arkitekt	I. BEJLERI
Arkitekt	K. DEMAJ
Arkitekt	R. KERPAÇI
Konstruktor	
Ing. Elektrik	
Ing. Hidroteknik	
Ing. Mekanik	
D307. Foto	
	A 105



**FONDI SHQIPTAR
I ZHVILLIMIT**



SON



EHC Korce

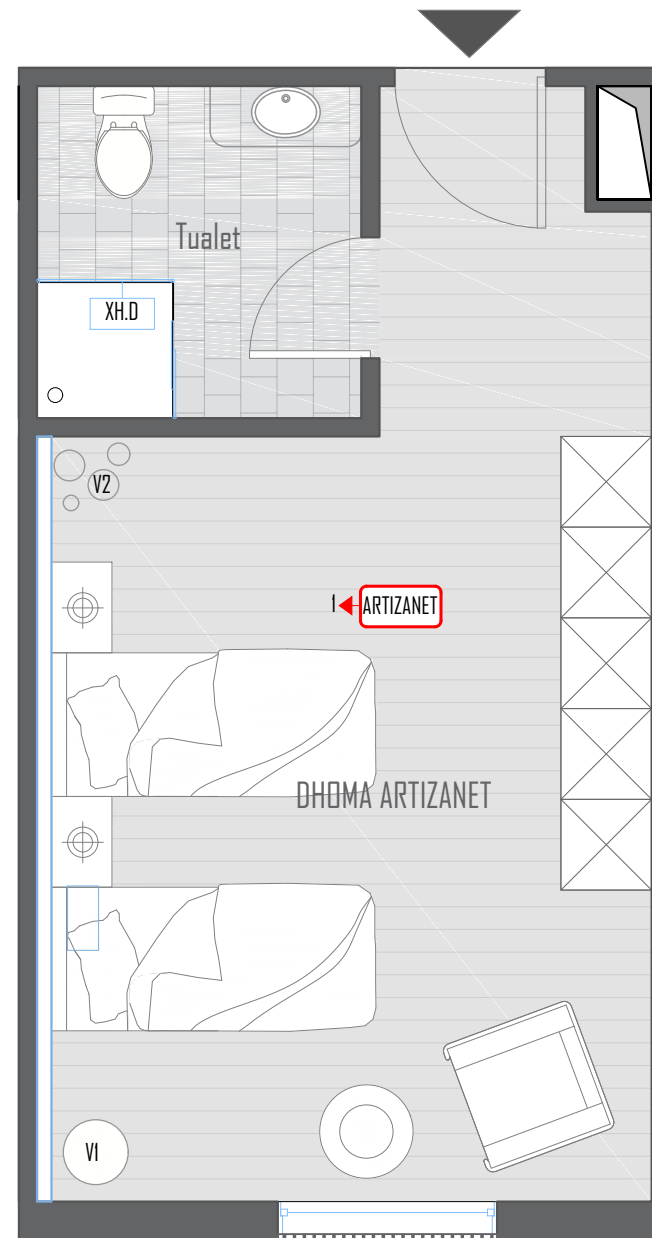
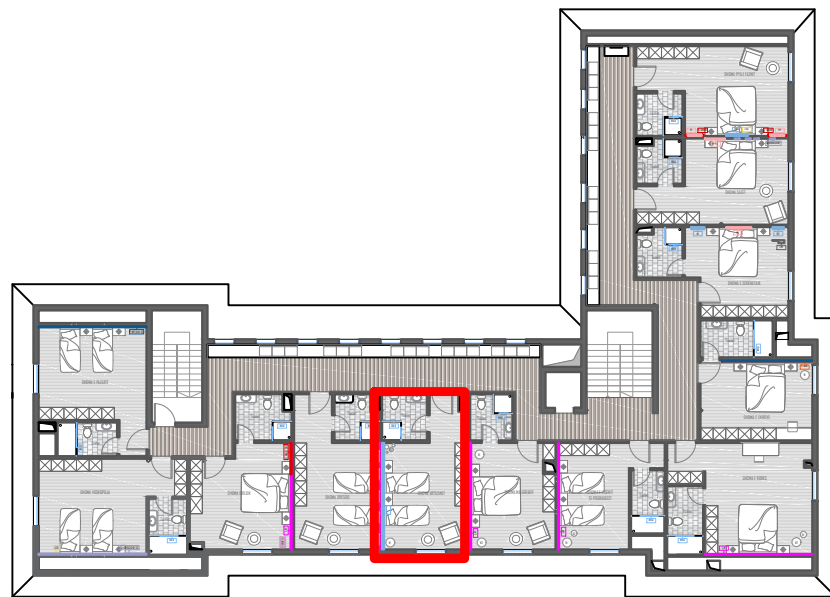
Porositës	
Projektoi	
Arkitekt	E. BEJLERI
Arkitekt	I. BEJLERI
Arkitekt	K. DEMAJ
Arkitekt	R. KERPAÇI
Konstruktor	
Ing. Elektrik	
Ing. Hidroteknik	
Ing. Mekanik	
D307. Render	
A 106	



**FONDI SHQIPTAR
I ZHVILLIMIT**



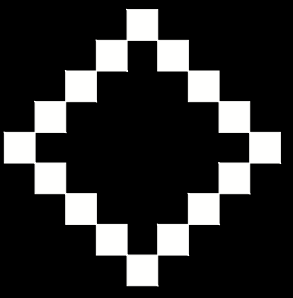
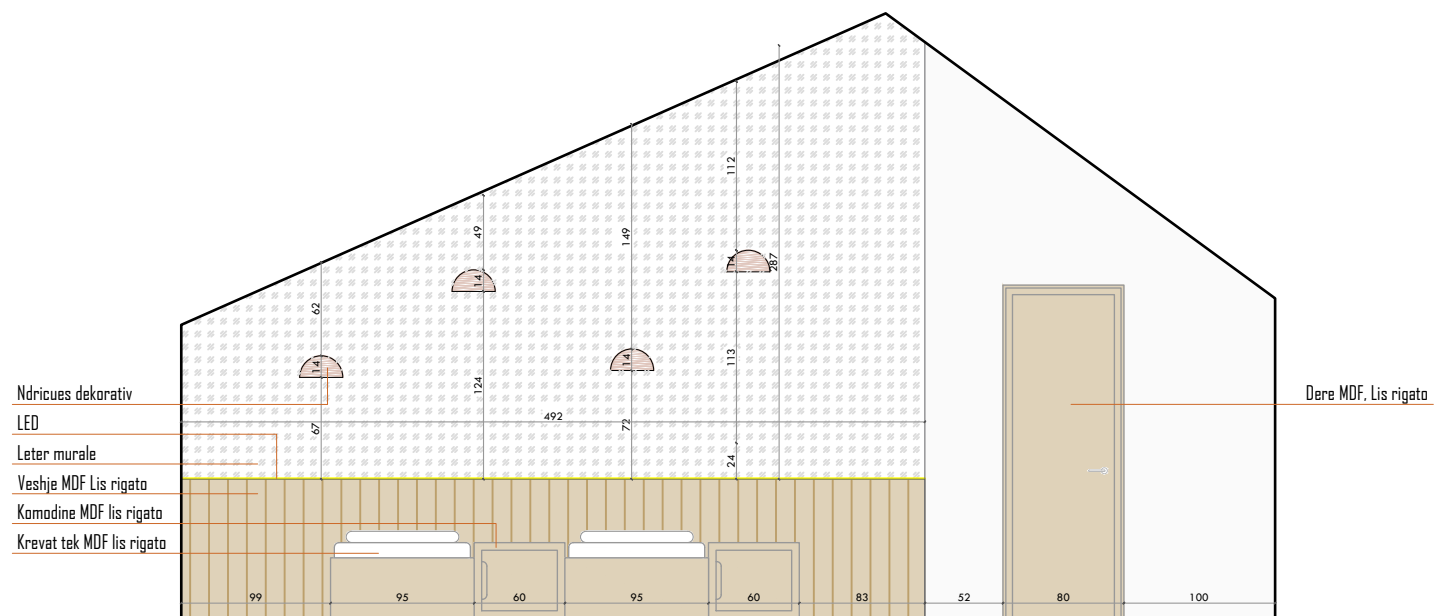
SON



Elemente te shtuar ne cdo dhome

- 01 Leter muri
- 02 Panele druri
- 03 Punim muri mikrociemento
- 04 Punime gipsi altoreliev
- 05 Dekoracion
- 06 Piktura
- 07 Gjelberim (disa nga dhomat)
- 08 Punime ne tualetin e dhomes (shtrim, pllaka, aksesore)

* Skedimi i dhomave do te bazohet mbi serine e vizualizimeve ne projekt



EHC Korçe

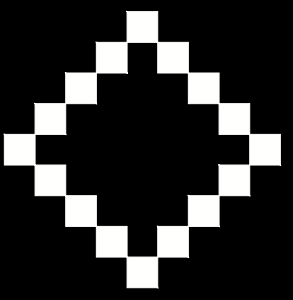
Porositës	
Projektoi	
Arkitekt	E. BEJLERI
Arkitekt	I. BEJLERI
Arkitekt	K. DEMAJ
Arkitekt	R. KERPAÇI
Konstruktor	
Ing. Elektrik	
Ing. Hidroteknik	
Ing. Mekanik	
D308. Plan, prerje	
Shkalla 1:150	A 107



FONDI SHQIPTAR I ZHVILLIMIT



SON



EHC Korce

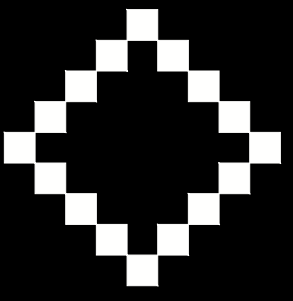
Porositës	
Projektoi	
Arkitekt	E. BEJLERI
Arkitekt	I. BEJLERI
Arkitekt	K. DEMAJ
Arkitekt	R. KERPAÇI
Konstruktor	
Ing. Elektrik	
Ing. Hidroteknik	
Ing. Mekanik	
D308. Foto	
	A 108



**FONDI SHQIPTAR
I ZHVILLIMIT**



SON



EHC Korce

Porositës	
Projektoi	
Arkitekt	E. BEJLERI
Arkitekt	I. BEJLERI
Arkitekt	K. DEMAJ
Arkitekt	R. KERPAÇI
Konstruktor	
Ing. Elektrik	
Ing. Hidroteknik	
Ing. Mekanik	
D308. Render	
	A109



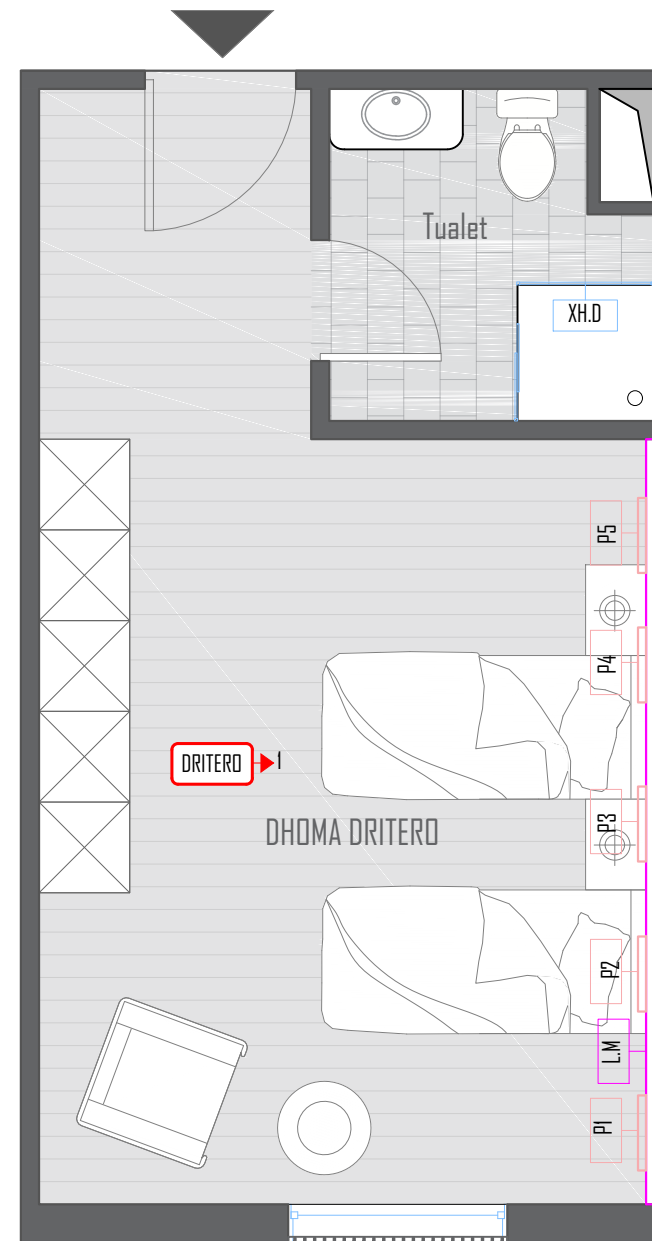
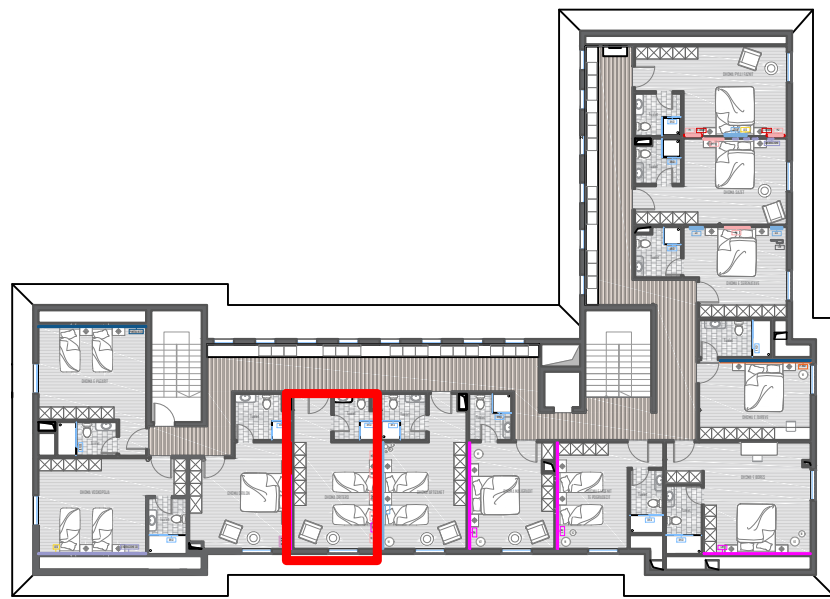
**FONDI SHQIPTAR
I ZHVILLIMIT**



SON

DHOMA DRITEROI

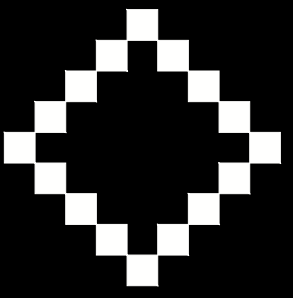
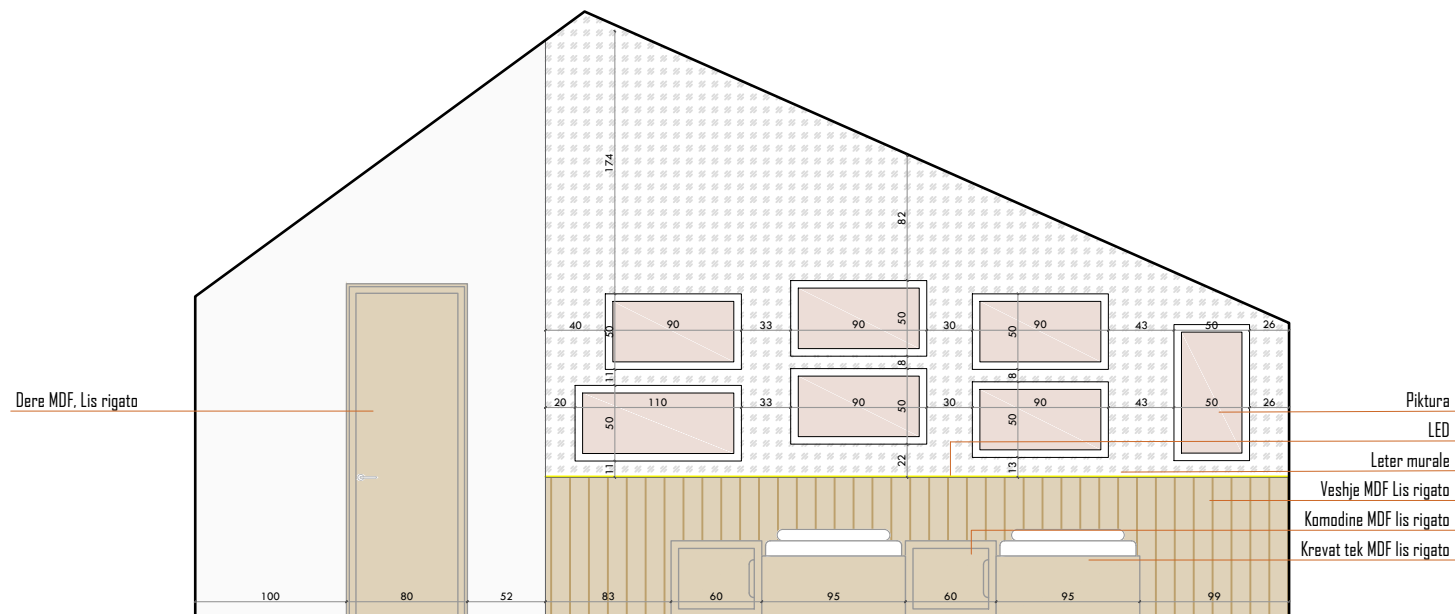
DHOMA DRITEROI



Elemente te shtuar ne cdo dhome

- 01 Leter muri
- 02 Panele druri
- 03 Punim muri mikroemento
- 04 Punime gipsi altoreliev
- 05 Dekoracion
- 06 Piktura
- 07 Gjelberim (disa nga dhomat)
- 08 Punime ne tualetin e dhomes (shtrim, pllaka, aksesore)

* Skedimi i dhomave do te bazohet mbi serine e vizualizimeve ne projekt



EHC Korçe

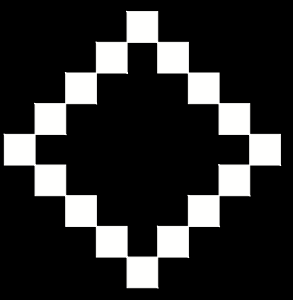
Porositës	
Projektoi	
Arkitekt	E. BEJLERI
Arkitekt	I. BEJLERI
Arkitekt	K. DEMAJ
Arkitekt	R. KERPAÇI
Konstruktor	
Ing. Elektrik	
Ing. Hidroteknik	
Ing. Mekanik	
D309. Plan, prerje	
Shkalla 1:150	A110



FONDI SHQIPTAR I ZHVILLIMIT



SON



EHC Korce

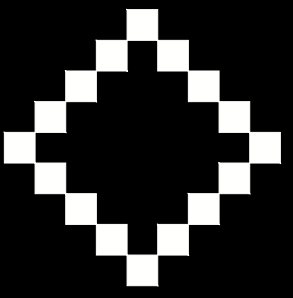
Porositës	
Projektoi	
Arkitekt	E. BEJLERI
Arkitekt	I. BEJLERI
Arkitekt	K. DEMAJ
Arkitekt	R. KERPAÇI
Konstruktor	
Ing. Elektrik	
Ing. Hidroteknik	
Ing. Mekanik	
D309. Foto	
	A111



**FONDI SHQIPTAR
I ZHVILLIMIT**



SON



EHC Korce

Porositës	
Projektoi	
Arkitekt	E. BEJLERI
Arkitekt	I. BEJLERI
Arkitekt	K. DEMAJ
Arkitekt	R. KERPAÇI
Konstruktor	
Ing. Elektrik	
Ing. Hidroteknik	
Ing. Mekanik	
D309. Render	
	A112



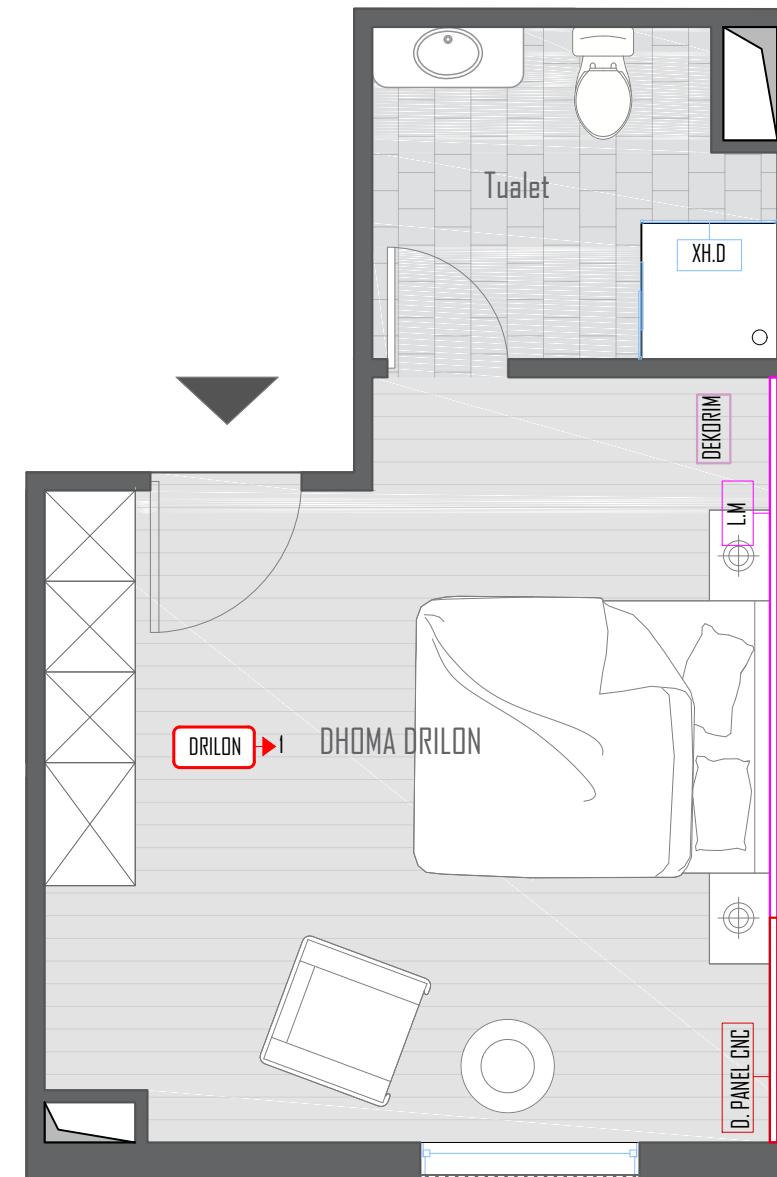
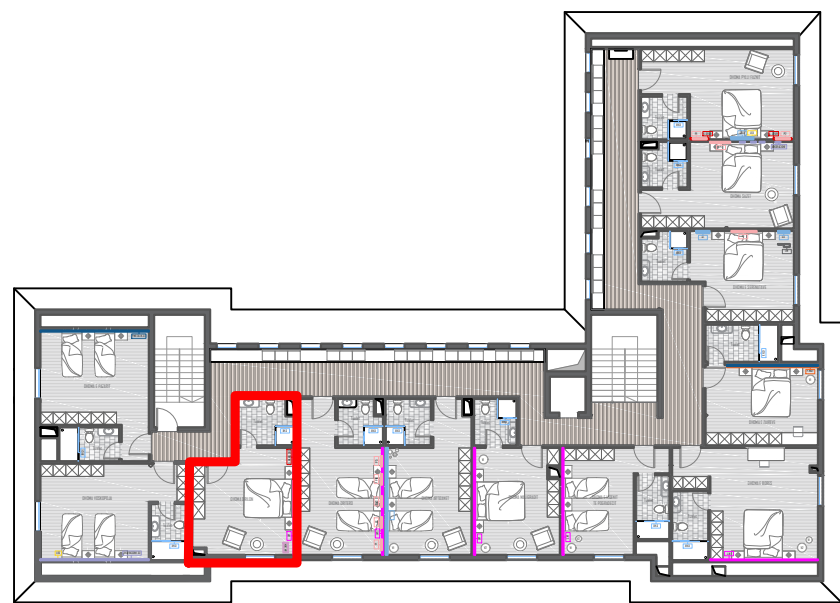
**FONDI SHQIPTAR
I ZHVILLIMIT**



SON

DHOMA DRILON

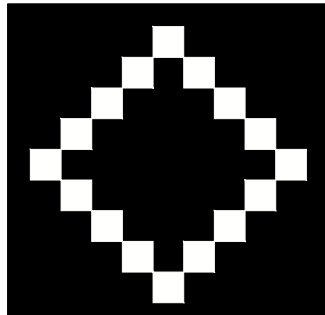
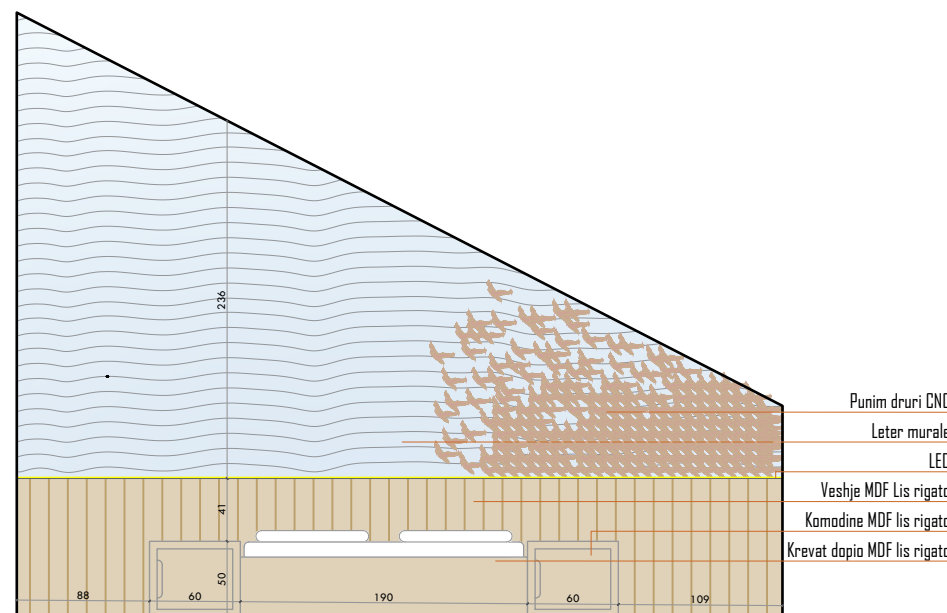
DHOMA DRILON



Elemente te shtuar ne cdo dhome

- 01 Leter muri
- 02 Panele druri
- 03 Punim muri mikrociemento
- 04 Punime gipsi altoreliev
- 05 Dekoracion
- 06 Piktura
- 07 Gjelberim (disa nga dhomat)
- 08 Punime ne tualetin e dhomes (shtrim, pllaka, aksesore)

* Skedimi i dhomave do te bazohet mbi serine e vizualizimeve ne projekt



EHC Korçe

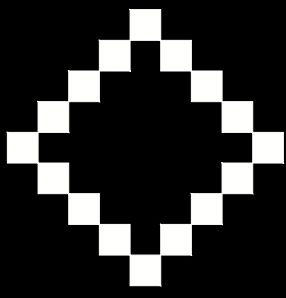
Porositës	
Projektoi	
Arkitekt	E. BEJLERI
Arkitekt	I. BEJLERI
Arkitekt	K. DEMAJ
Arkitekt	R. KERPAÇI
Konstruktor	
Ing. Elektrik	
Ing. Hidroteknik	
Ing. Mekanik	
D310. Plan, prerje	
Shkalla 1:150	A113



FONDI SHQIPTAR I ZHVILLIMIT



SON



EHC Korce

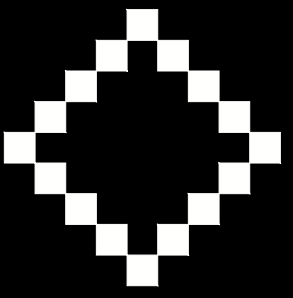
Porositës	
Projektoi	
Arkitekt	E. BEJLERI
Arkitekt	I. BEJLERI
Arkitekt	K. DEMAJ
Arkitekt	R. KERPAÇI
Konstruktor	
Ing. Elektrik	
Ing. Hidroteknik	
Ing. Mekanik	
D310. Foto	
	A114



**FONDI SHQIPTAR
I ZHVILLIMIT**



SON



EHC Korce

Porositës	
Projektoi	
Arkitekt	E. BEJLERI
Arkitekt	I. BEJLERI
Arkitekt	K. DEMAJ
Arkitekt	R. KERPAÇI
Konstruktor	
Ing. Elektrik	
Ing. Hidroteknik	
Ing. Mekanik	
D310. Render	
	A115

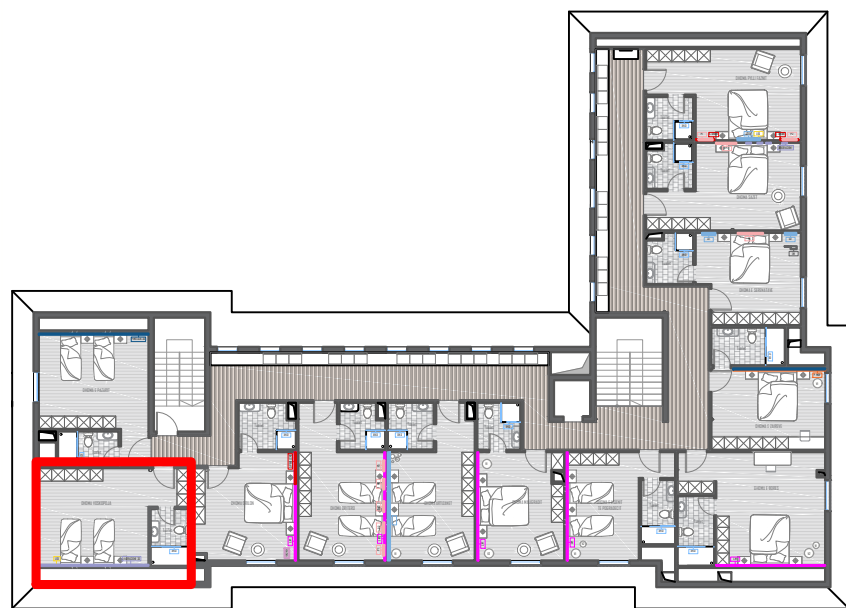


**FONDI SHQIPTAR
I ZHVILLIMIT**



SON

DHOMA VOSKOPOJA

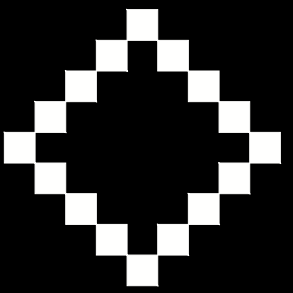
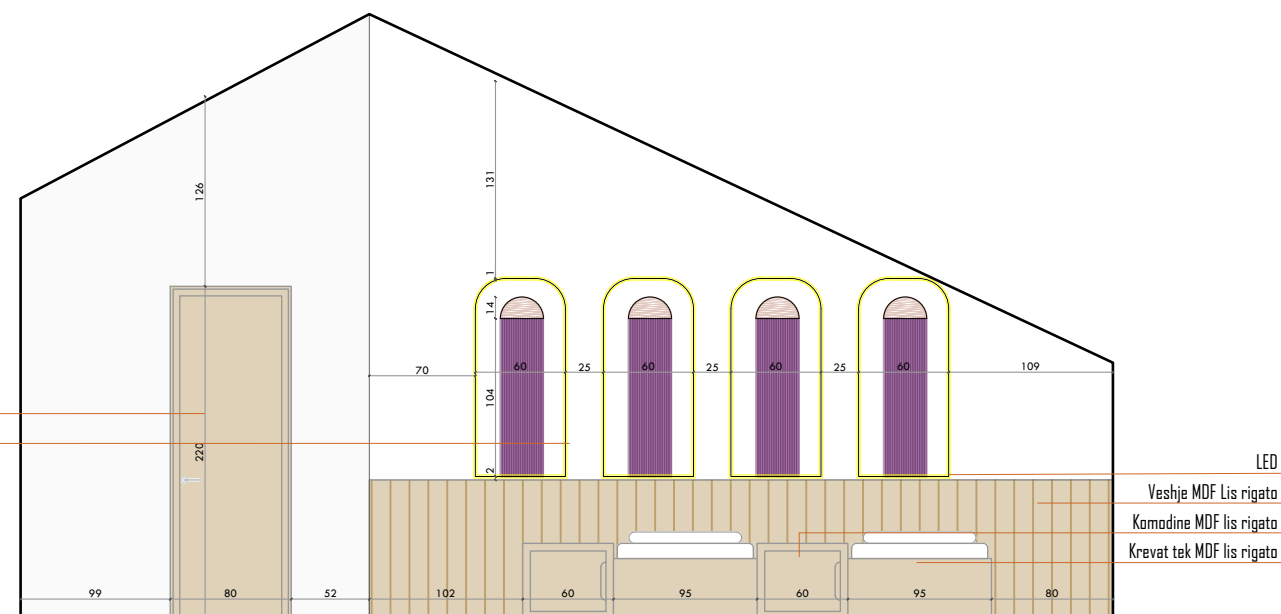
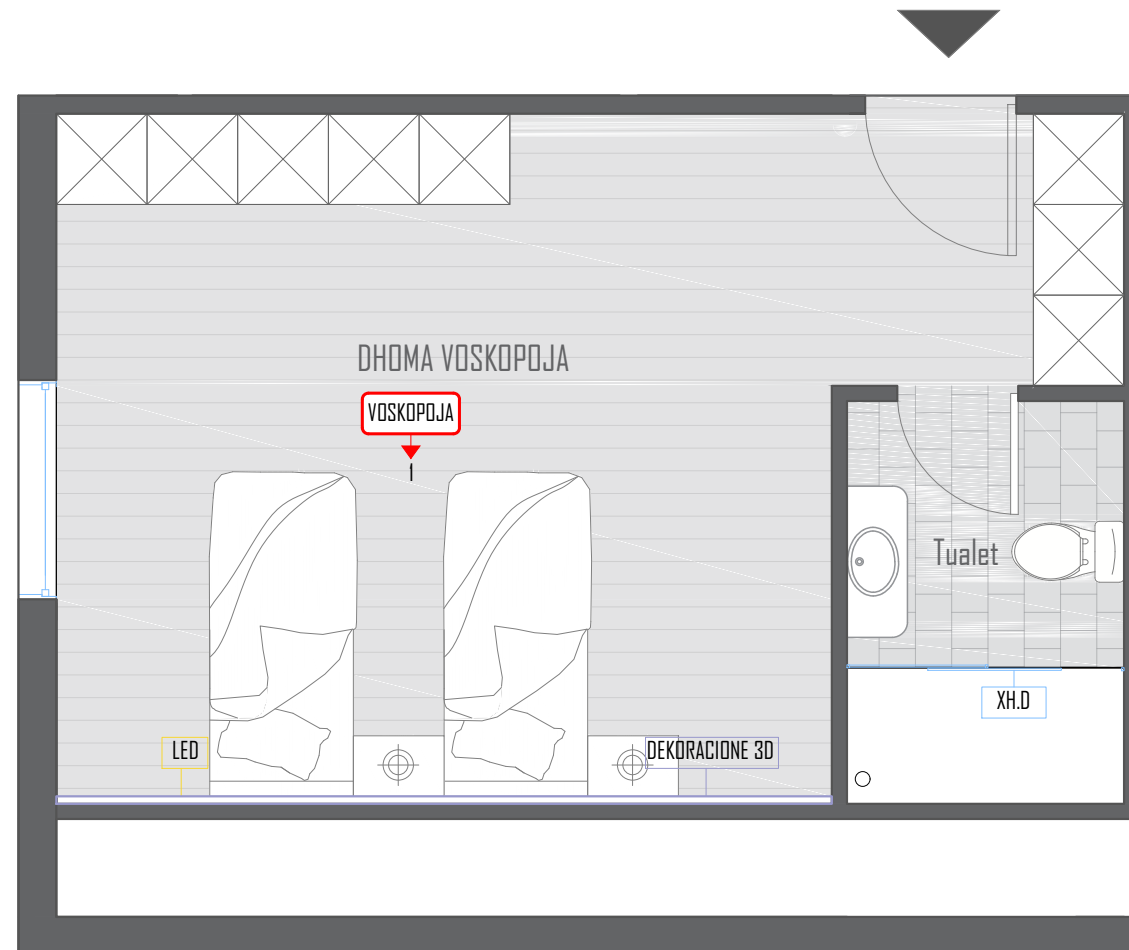


Elemente te shtuar ne cdo dhome

- 01 Leter muri
- 02 Panele druri
- 03 Punim muri mikrociemento
- 04 Punime gipsi altoreliev
- 05 Dekoracion
- 06 Piktura
- 07 Gjelberim (disa nga dhomat)
- 08 Punime ne tualetin e dhomes (shtrim, pllaka, aksesore)

* Skedimi i dhomave do te bazohet mbi serine e vizualizimeve ne projekt

DHOMA VOSKOPOJA



EHC Korçe

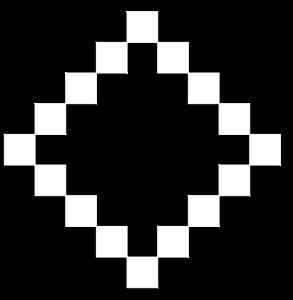
Porositës	
Projektoi	
Arkitekt	E. BEJLERI
Arkitekt	I. BEJLERI
Arkitekt	K. DEMAJ
Arkitekt	R. KERPAÇI
Konstruktor	
Ing. Elektrik	
Ing. Hidroteknik	
Ing. Mekanik	
D311. Plan, prerje	
Shkalla 1:150	A116



FONDI SHQIPTAR I ZHVILLIMIT



SON



EHC Korçe

Porositës	
Projektoi	
Arkitekt	E. BEJLERI
Arkitekt	I. BEJLERI
Arkitekt	K. DEMAJ
Arkitekt	R. KERPAÇI
Konstruktor	
Ing. Elektrik	
Ing. Hidroteknik	
Ing. Mekanik	
D311. Foto	
	A117

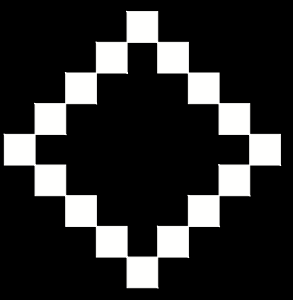


**FONDI SHQIPTAR
I ZHVILLIMIT**



SON





EHC Korce

Porositës	
Projektoi	
Arkitekt	E. BEJLERI
Arkitekt	I. BEJLERI
Arkitekt	K. DEMAJ
Arkitekt	R. KERPAÇI
Konstruktor	
Ing. Elektrik	
Ing. Hidroteknik	
Ing. Mekanik	
D311. Render	
	A118



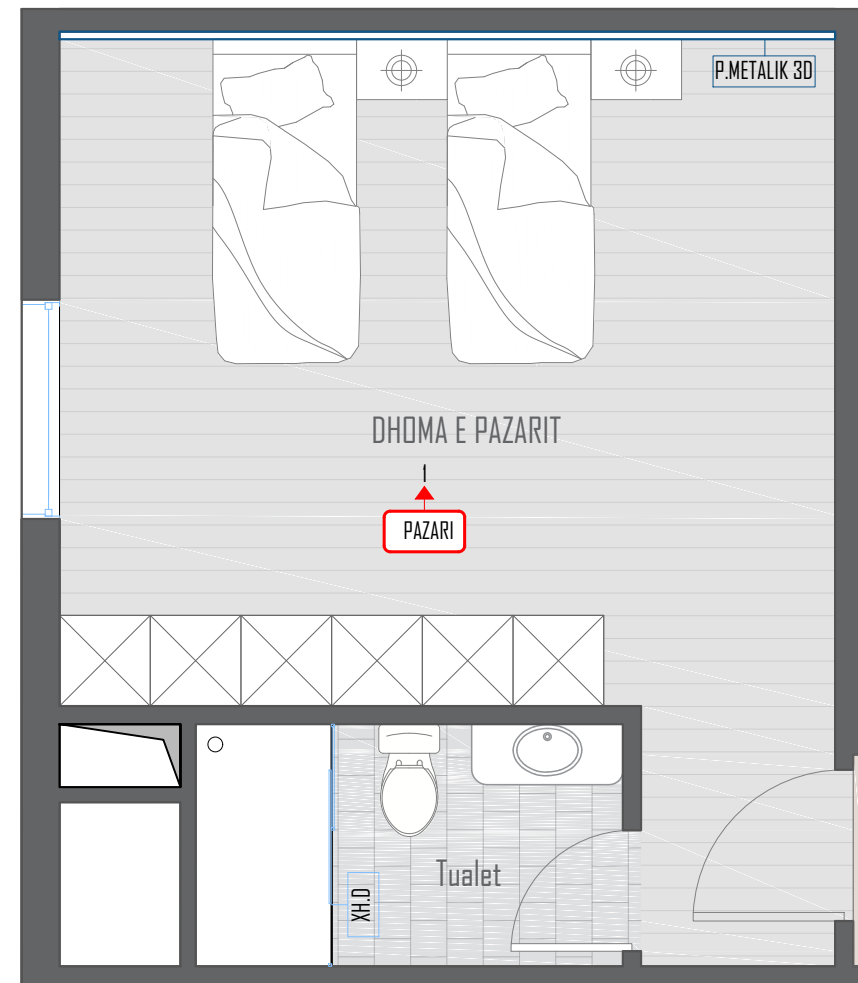
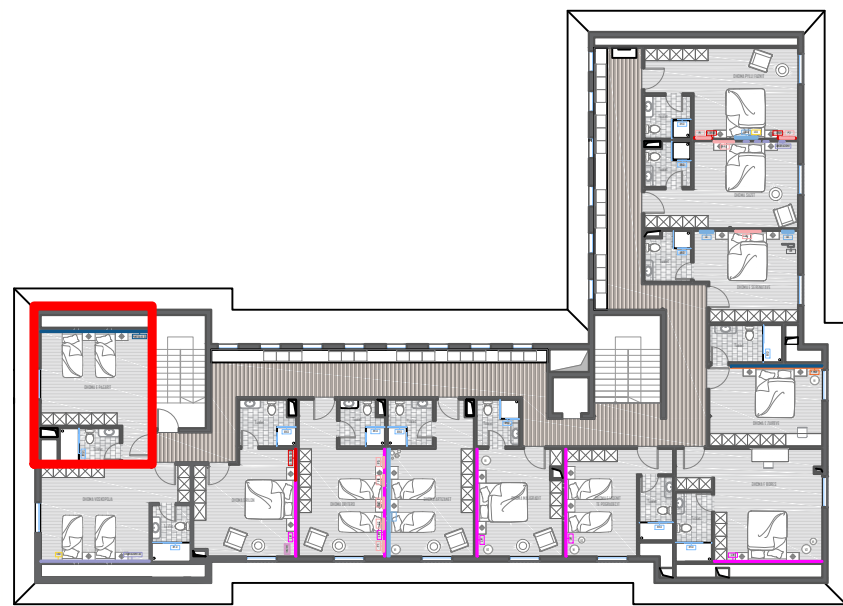
**FONDI SHQIPTAR
I ZHVILLIMIT**



SON

DHOMA E PAZARIT

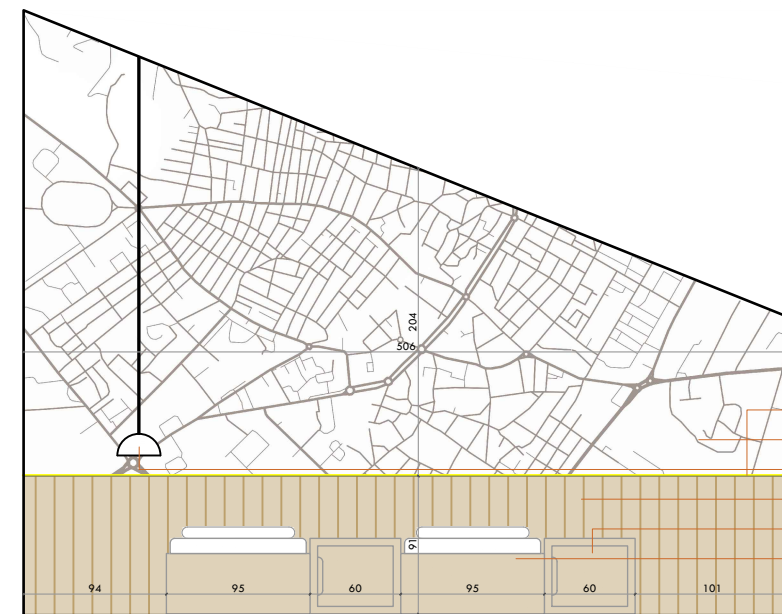
DHOMA E PAZARIT



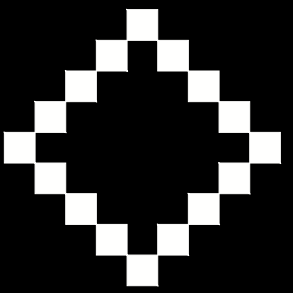
Elemente te shtuar ne cdo dhome

- 01 Leter muri
- 02 Panele druri
- 03 Punim muri mikroemento
- 04 Punime gipsi altoreliev
- 05 Dekoracion
- 06 Piktura
- 07 Gjelberim (disa nga dhomat)
- 08 Punime ne tualetin e dhomes (shtrim, pllaka, aksesore)

* Skedimi i dhomave do te bazohet mbi serine e vizualizimeve ne projekt



- LED
- Punim metalik 3D harte
- Ndricues i varur
- Veshje MDF lis rigato
- Komodine MDF lis rigato
- Krevet tek MDF lis rigato



EHC Korçe

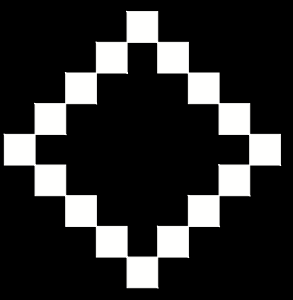
Porositës	
Projektoi	
Arkitekt	E. BEJLERI
Arkitekt	I. BEJLERI
Arkitekt	K. DEMAJ
Arkitekt	R. KERPAÇI
Konstruktor	
Ing. Elektrik	
Ing. Hidroteknik	
Ing. Mekanik	
D312. Plan, prerje	
Shkalla 1:150	A119



FONDI SHQIPTAR I ZHVILLIMIT



SON



EHC Korce

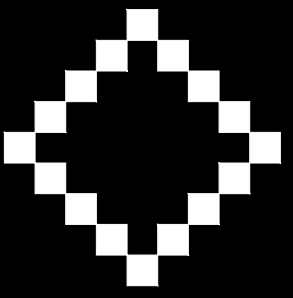
Porositës	
Projektoi	
Arkitekt	E. BEJLERI
Arkitekt	I. BEJLERI
Arkitekt	K. DEMAJ
Arkitekt	R. KERPAÇI
Konstruktor	
Ing. Elektrik	
Ing. Hidroteknik	
Ing. Mekanik	
D312. Foto	
	A1 20



**FONDI SHQIPTAR
I ZHVILLIMIT**



SON



EHC Korce

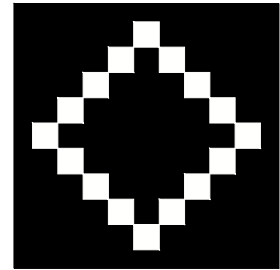
Porositës	
Projektoi	
Arkitekt	E. BEJLERI
Arkitekt	I. BEJLERI
Arkitekt	K. DEMAJ
Arkitekt	R. KERPAÇI
Konstruktor	
Ing. Elektrik	
Ing. Hidroteknik	
Ing. Mekanik	
D312. Render	
	A121



**FONDI SHQIPTAR
I ZHVILLIMIT**



SON



MIK KORÇË

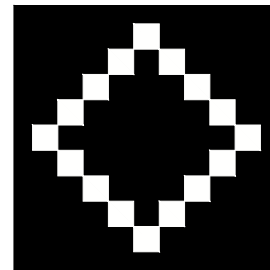
Shënime

Blank area for notes.



Porositës	Fondi Shqiptar i Zhvillimit
Projektoi	
Arkitekt	E. BEJLERI
Arkitekt	I. BEJLERI
Arkitekt	K. DEMAJ
Arkitekt	R. KERPAÇI
VIZUALIZIM - KORRIDOR HOTELERIA	
Shkalla 1:200	A122

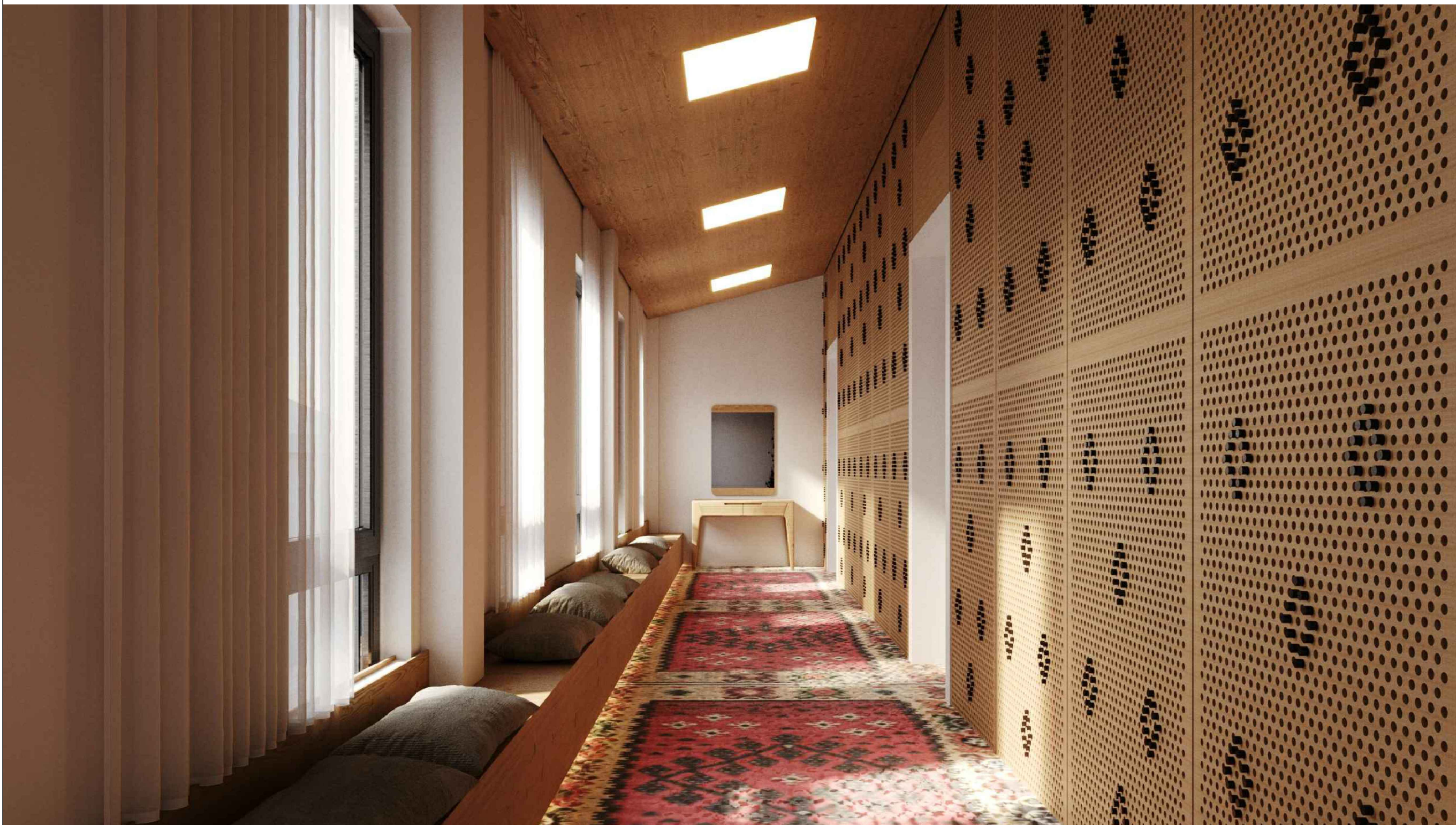
FONDI SHQIPTAR I ZHVILLIMIT
A&E ENGINEERING
SON



MIK KORÇË

Shënime

Blank area for notes.



Porositës	Fondi Shqiptar i Zhvillimit
-----------	-----------------------------

Projektoi

Arkitekt	E. BEJLERI
Arkitekt	I. BEJLERI
Arkitekt	K. DEMAJ
Arkitekt	R. KERPAÇI

VIZUALIZIM - KORRIDOR HOTELERIA

Shkalla 1:200	A123
---------------	-------------



FONDI SHQIPTAR I ZHVILLIMIT

A&E ENGINEERING

SON