

DIMENSIONS

IEC designation

Diameter of shell (D)

Spacing (P)

Minimal nominal creepage distance

Couplings according to IEC 60120

Approximate net weight

According to IEC 60305

U120B

255 mm

146 mm

320 mm

Size 16A

4 kg

ELECTRICAL PERFORMANCES

Power frequency withstand voltage

dry one minute

wet one minute

Lightning impulse withstand voltage

Withstand puncture voltage

According to IEC 60383

70 kV

40 kV

100 kV

130 kV

MECHANICAL PERFORMANCES

Minimum mechanical failing load

According to IEC 60383

120 kN

COMPONENT PARTS

Dielectric shell : : TOUGHENED GLASS

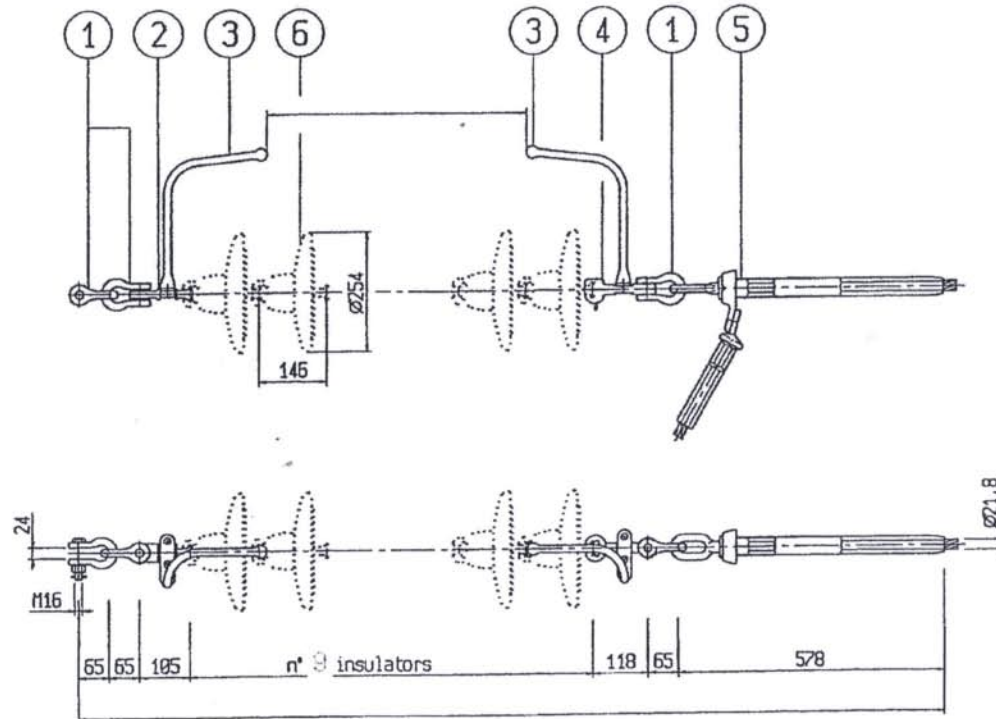
Cap : : HOT DIP GALVANIZED CAST IRON

Pin : : HOT DIP GALVANIZED FORGED STEEL

Cotter key : : STAINLESS STEEL

Cement : ALUMINOUS, hot cured

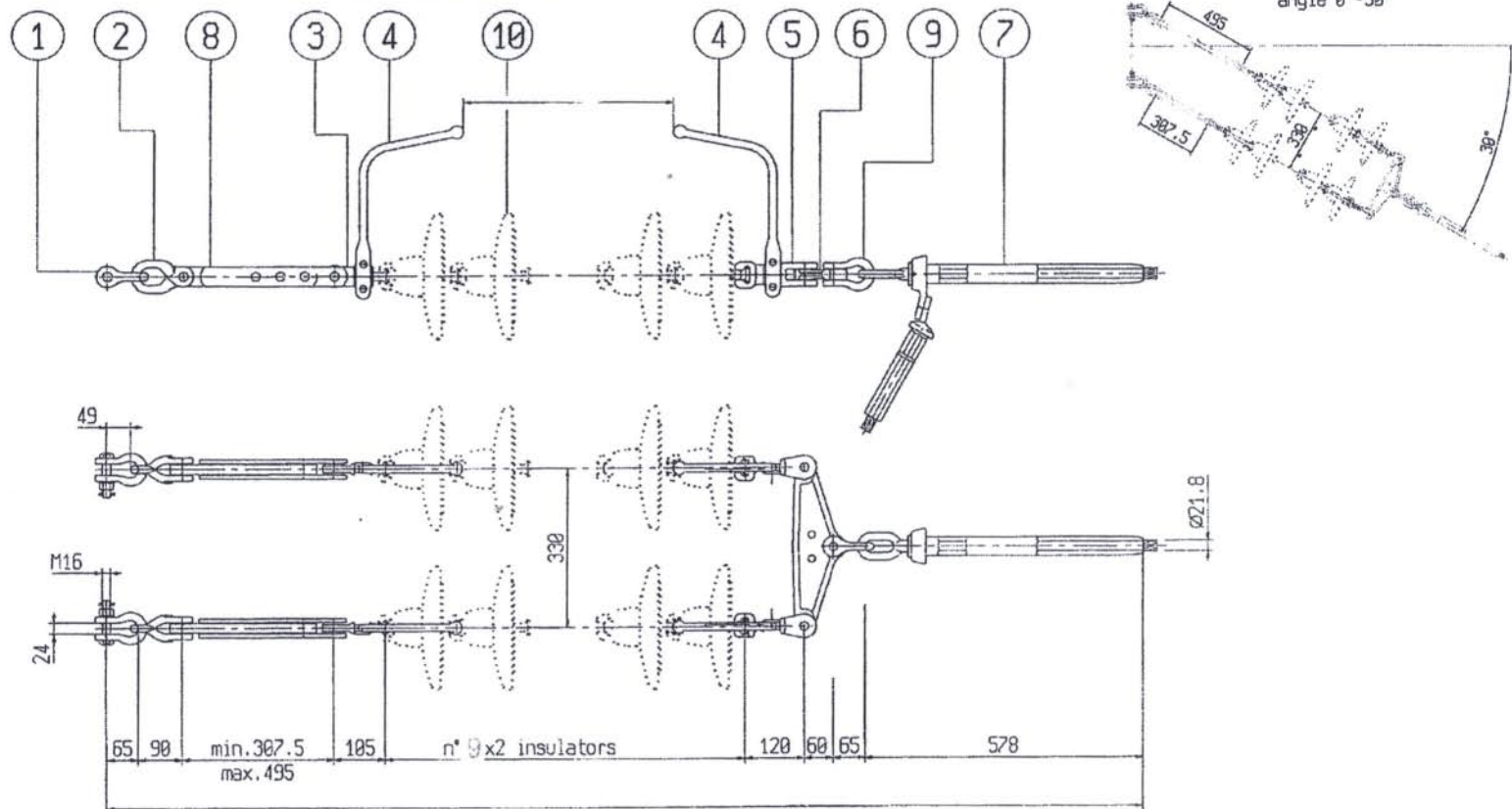
WHERE NOT SPECIFIED TOLERANCES TO BS 3288 PART.1 UP TO AND INCLUDING 35mm +0.7mm OVER 35mm +2%



-MINIMUM BREAKING STRENGTH OF TENSION INSULATORS SET 120 kN

6	insulators	-	-	-	120 kN	
5	compression dead end	1	alum.alloy/galv.steel	510G03LG	95% UTS	
4	long socket-tongue	1	galvanized steel	2433	120 kN	
3	arcing horn	2	galvanized steel	411D33-M2		
2	long ball-tongue	1	galvanized steel	2309	120 kN	
1	shackle	3	galvanized steel	2713-006	120 kN	
ITEM	DENOMINATION	Q'	MATERIAL	CODE	n. B. S.	NOTES

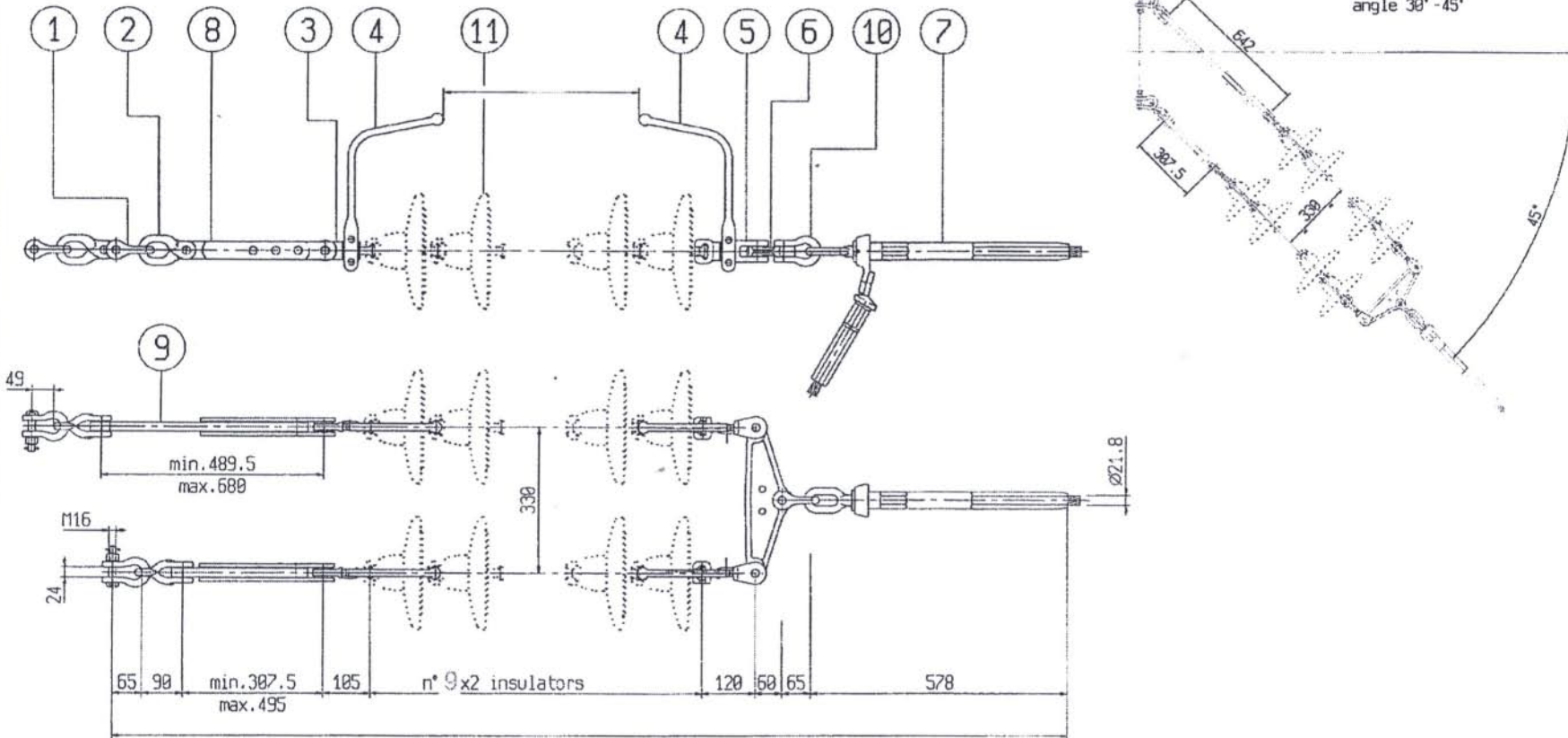
WHERE NOT SPECIFIED TOLERANCES TO BS 3288 PART.1 UP TO AND INCLUDING 35mm +0.7mm OVER 35mm +2%



-MINIMUM BREAKING STRENGTH OF TENSION INSULATORS SET 160 kN

10	insulators	-	-	-	120 kN	
9	shackle	1	galvanized steel	2713-15-009	160 kN	
8	adjustable extension link	2	galvanized steel	026-171-006	120 kN	
7	compression dead end	1	alum.alloy/galv.steel	510G03LG	95% UTS	
6	spacing yoke	1	galvanized steel	2966-1	160 kN	
5	long socket-clevis	2	galvanized steel	24138-006	120 kN	
4	arcing horn	4	galvanized steel	411A176-M2		
3	long ball-tongue	2	galvanized steel	2309	120 kN	
2	90° shackle	2	galvanized steel	2705-006	120 kN	
1	shackle	2	galvanized steel	2713-006	120 kN	
ITEM	DENOMINATION	N°	MATERIAL	CODE	N. B. S.	NOTES

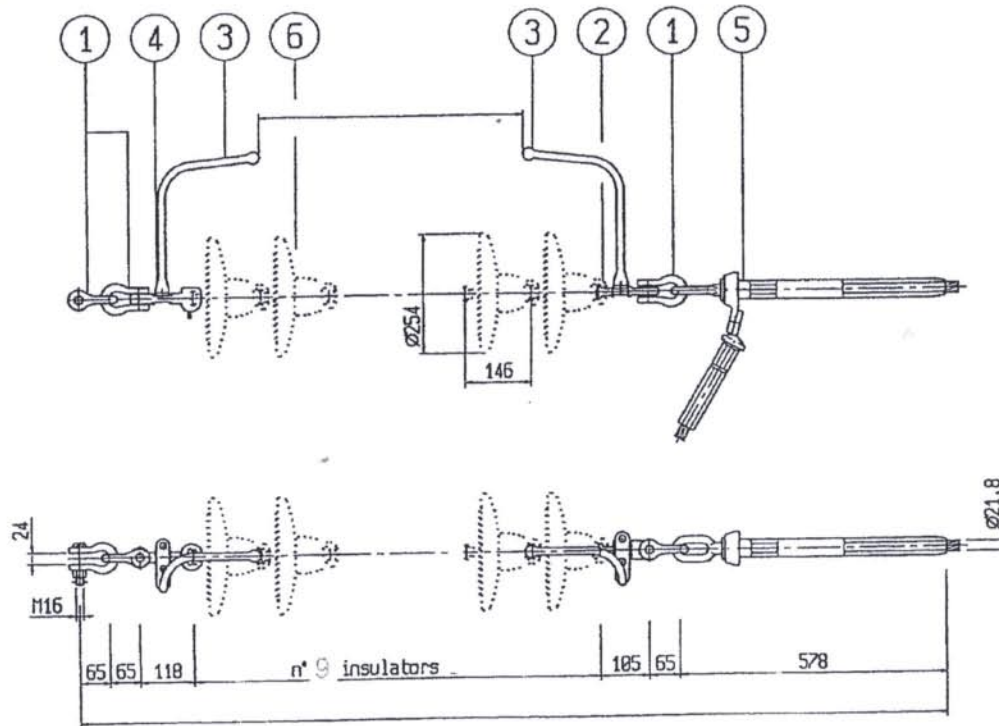
WHERE NOT SPECIFIED TOLERANCES TO BS 3289 PART.1 UP TO AND INCLUDING 35mm ± 0.7 mm OVER 35mm $\pm 2\%$



-MINIMUM BREAKING STRENGTH OF TENSION INSULATORS SET 160 kN

11	insulators	-	-	-	120 kN	
10	shackle	1	galvanized steel	2713-15-009	160 kN	
9	adjustable extension link	1	galvanized steel	Ø26-155	120 kN	
8	adjustable extension link	1	galvanized steel	Ø26-171-006	120 kN	
7	compression dead end	1	alum.alloy/galv.steel	510G03LG	95% UTS	
6	spacing yoke	1	galvanized steel	2965-1	160 kN	
5	long socket-clevis	2	galvanized steel	24138-006	120 kN	
4	arcing horn	4	galvanized steel	411A176-M2		
3	long ball-tongue	2	galvanized steel	2309	120 kN	
2	90° shackle	2	galvanized steel	2705-006	120 kN	
1	shackle	2	galvanized steel	2713-006	120 kN	
ITEM	DENOMINATION	N°	MATERIAL	CODE	n.B.S.	NOTES

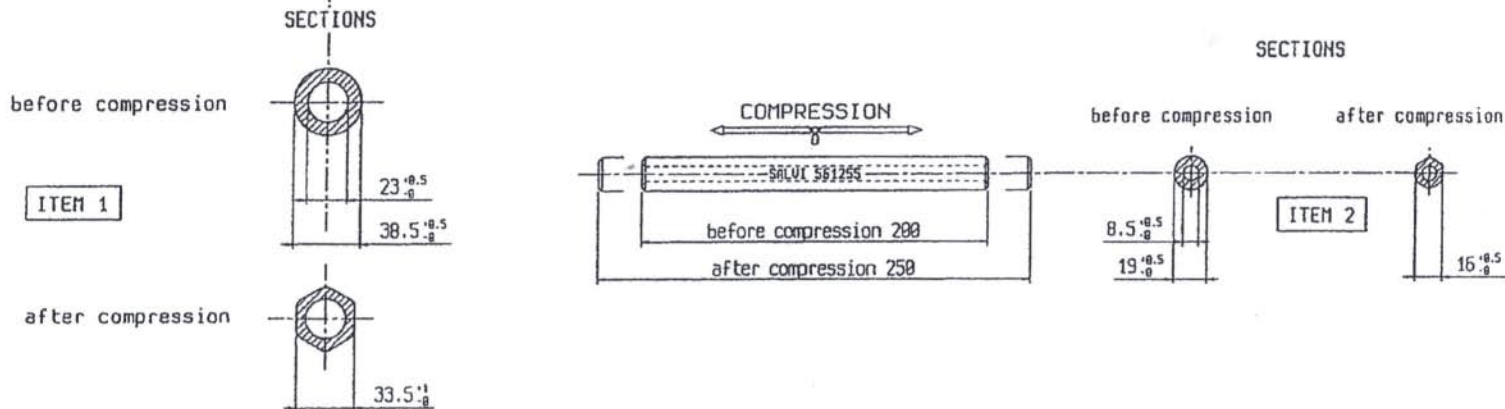
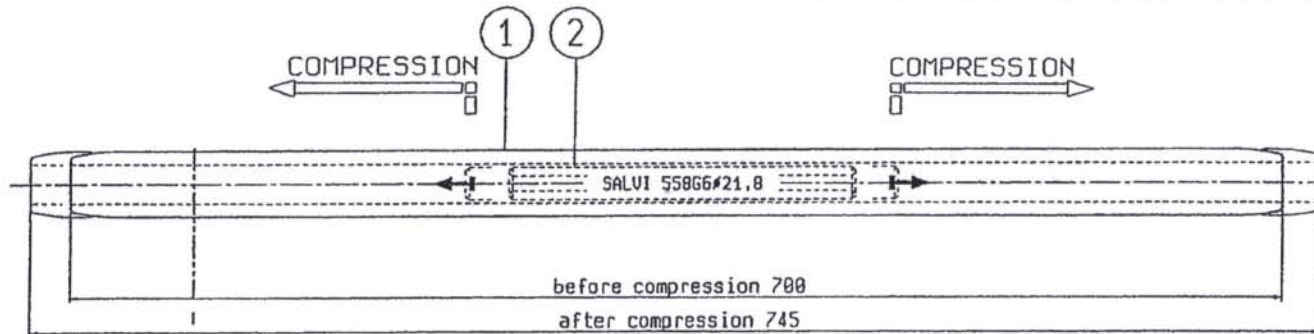
WHERE NOT SPECIFIED TOLERANCES TO BS 3288 PART.1 UP TO AND INCLUDING 35mm +0.7mm OVER 35mm +2%



-MINIMUM BREAKING STRENGTH OF TENSION INSULATORS SET 120 kN

6	insulators	-	-	-	120 kN	
5	compression dead end	1	alum.alloy/galv.steel	510G03LG	95% UTS	
4	long socket-tongue	1	galvanized steel	2433	120 kN	
3	arcing horn	2	galvanized steel	411D33-M2		
2	long ball-tongue	1	galvanized steel	2309	120 kN	
1	shackle	3	galvanized steel	2713-006	120 kN	
ITEM	DENOMINATION	N°	MATERIAL	CODE	N.B.S.	NOTES

WHERE NOT SPECIFIED TOLERANCES IN ACCORDANCE TO BS 3288 PART.1 UP TO AND INCLUDING 35 mm ± 0.7 mm OVER 35 mm ± 2

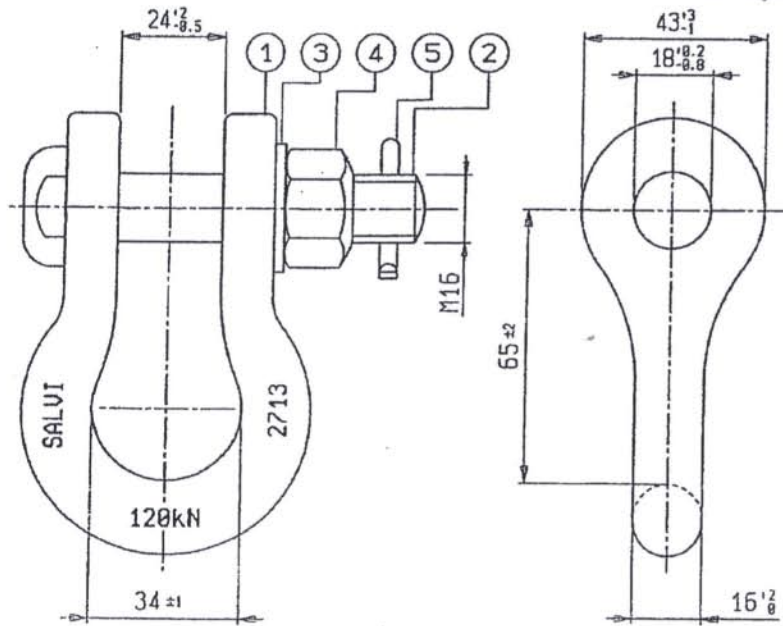


- HEXAGONAL COMPRESSION DIE FOR ALUMINIUM cat. n° 590M062
- HEXAGONAL COMPRESSION DIE FOR STEEL cat. n° 591M027
- ULTIMATE STRENGTH: 95% OF CONDUCTOR U.T.S.

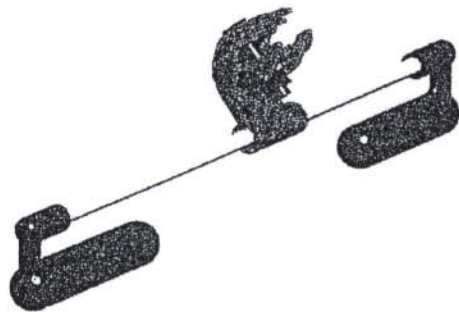
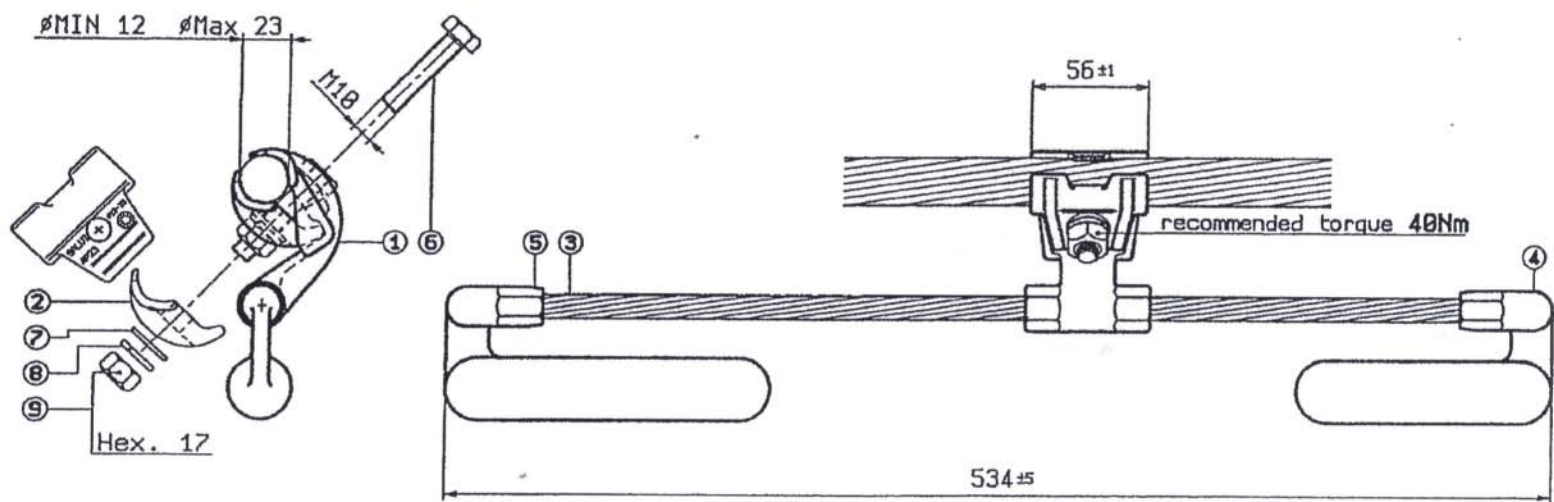
-ITEM 2 GALVANIZED ACCORDING TO ASTM A 153 - CEI 7-6 - BS 729

2	compression joint	1	galvanized steel	S61255	
1	compression joint	1	aluminium alloy	558G6	
ITEM	DENOMINATION	N°	MATERIAL	CODE	NOTES

ITEM	DESCRIPTION	QTY	MATERIAL	CODE	NOTES
1	shackle	1	galvanized steel	2713	
2	M16 bolt	1	galvanized steel	UTS16X83	
3	plain washer	1	galvanized steel	RPM16	
4	M16 hexagonal nut	1	galvanized steel	DPM16	
5	cotter pin	1	stainless steel	3442	



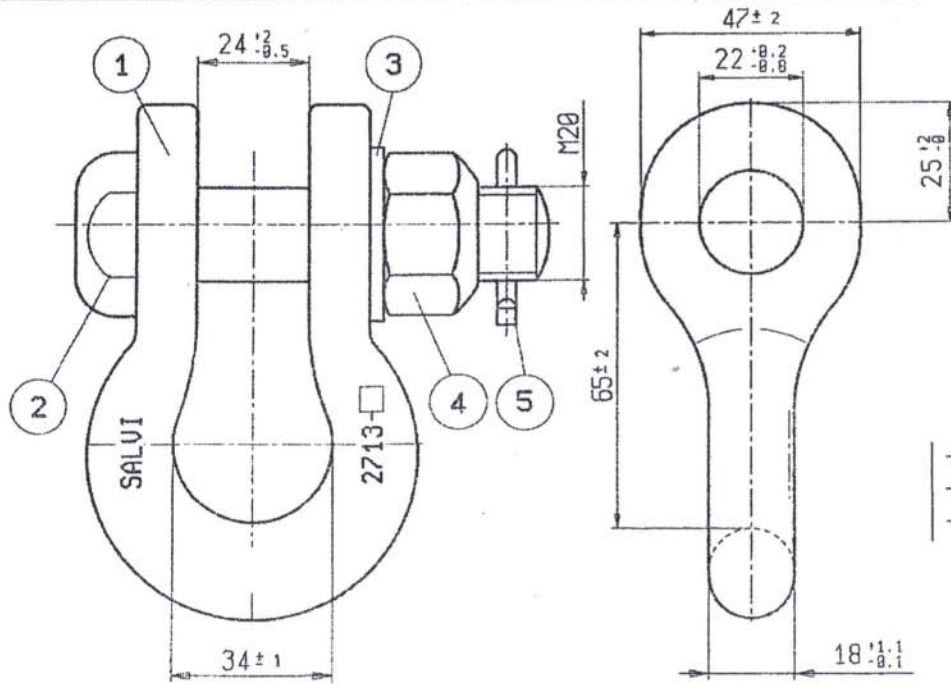
- MADE IN DROP FORGED STEEL
- MINIMUM BREAKING STRENGTH 120 kN
- GALVANIZED ACCORDING TO CEI 7-6 ASTM A 153 BS 729



9	hexagonal nut	1	galvanized steel	DPM10	according to ASTM A 153
8	spring washer	1	stainless steel	RGM10INOX	
7	plain washer	1	stainless steel	RPM10INOX	
6	bolt	1	galvanized steel	UTE10X50	according to ASTM A 153
5	damper weight	1	galvanized steel	4RFG-1	according to ASTM A 153
4	damper weight	1	galvanized steel	4RFG-2	according to ASTM A 153
3	damper cable	1	galvanized steel	4RFG-9	according to UNI7304 Cl.A
2	cover half clamp	1	aluminium alloy	4P23	
1	hook half clamp	1	aluminium alloy	4M23	
ITEM	DENOMINATION	Q.TY	MATERIAL	CODE	NOTES

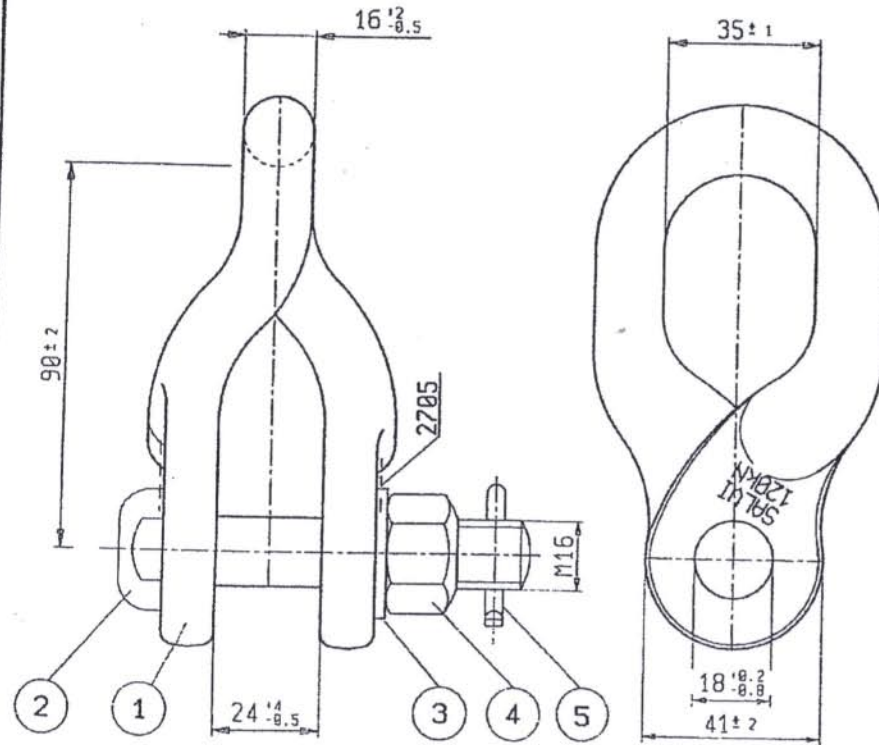
LIV.1

ITEM	DENOMINATION	Q. TY	MATERIAL	CODE	NOTES
1	shackle	1	galvanized steel	2713-1S	
2	M20 bolt	1	galvanized steel	UTS20X88	
3	plain washer	1	galvanized steel	RPM20	
4	M20 hexagonal nut	1	galvanized steel	OPM20	
5	cotter pin	1	stainless steel	3442	

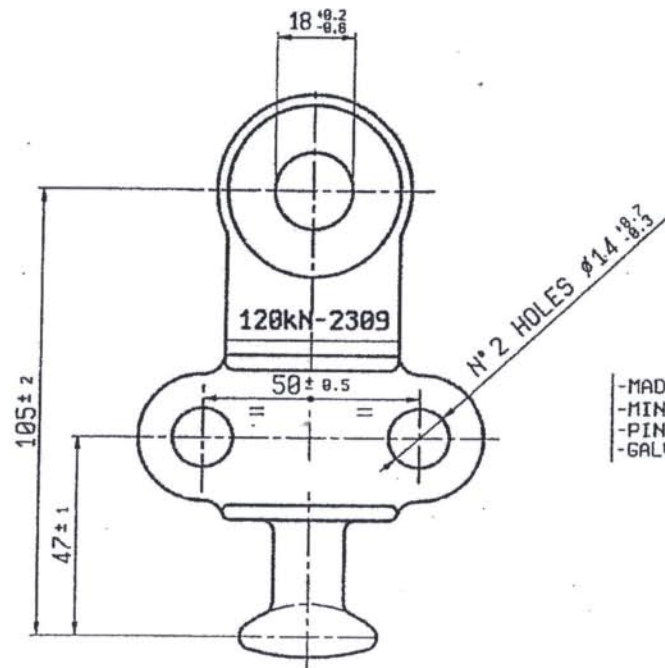
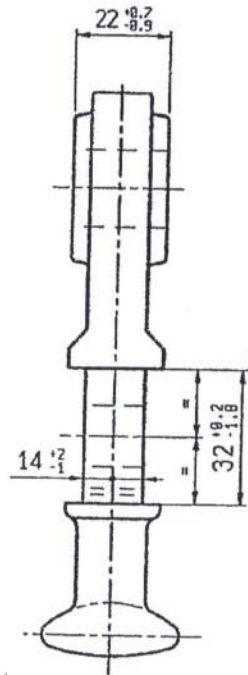


- MADE IN DROP FORGED STEEL
- MINIMUM BREAKING STRENGTH 240 kN
- GALVANIZED ACCORDING TO CEI 7-6

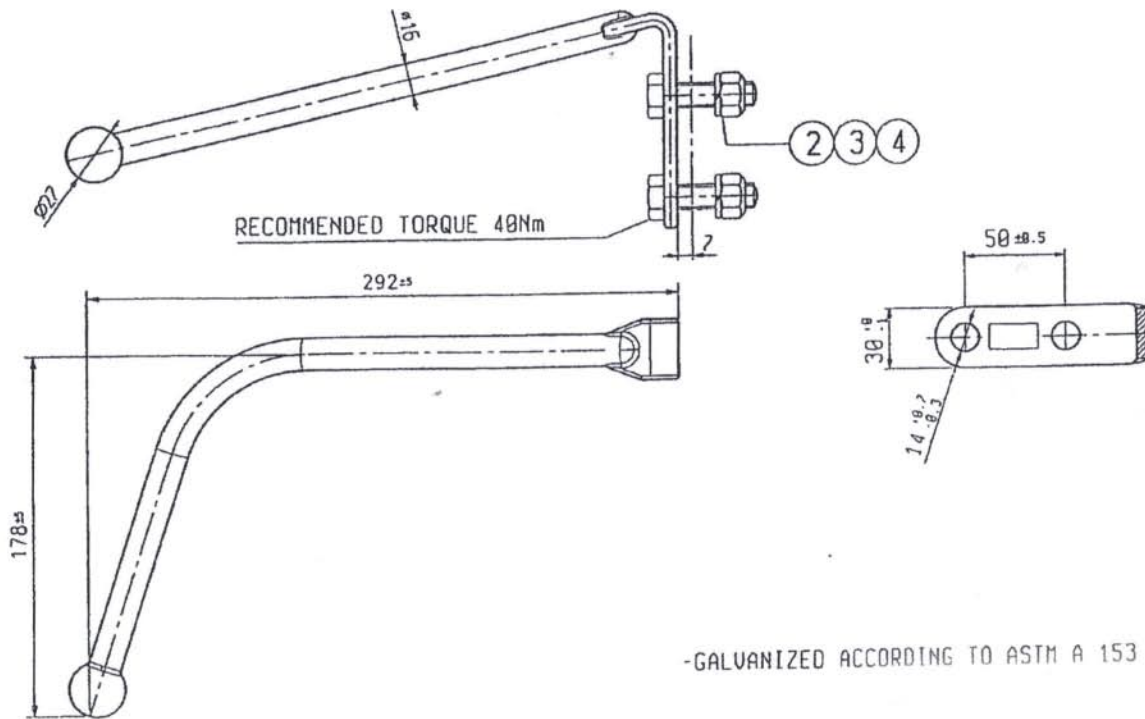
ITEM	DESCRIPTION	QTY	MATERIAL	CODE	NOTES
1	90° shackle	1	galvanized steel	2705	
2	M16 bolt	1	galvanized steel	UTS16X83	
3	plain washer	1	galvanized steel	RPM16	
4	M16 hexagonal nut	1	galvanized steel	DPM16	
5	cotter pin	1	stainless steel	3442	



- MADE IN DROP FORGED STEEL
- MINIMUM BREAKING STRENGTH 120kN
- GALVANIZED ACCORDING TO ASTM A 153 - CEI 7-6 - BS 729



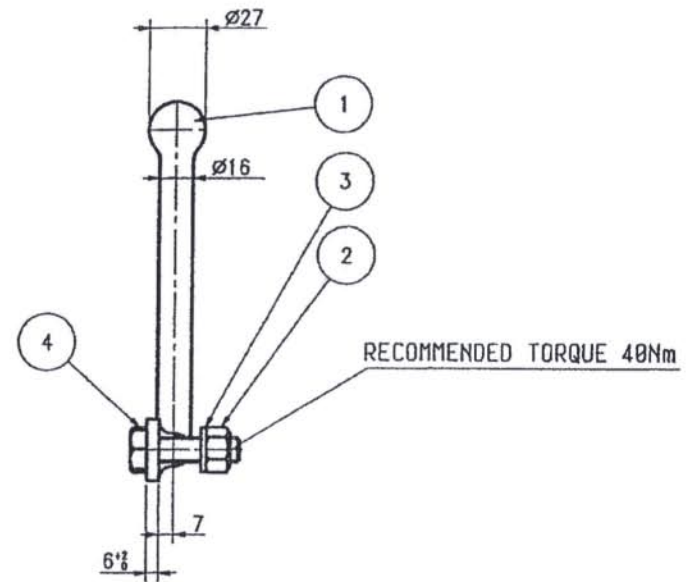
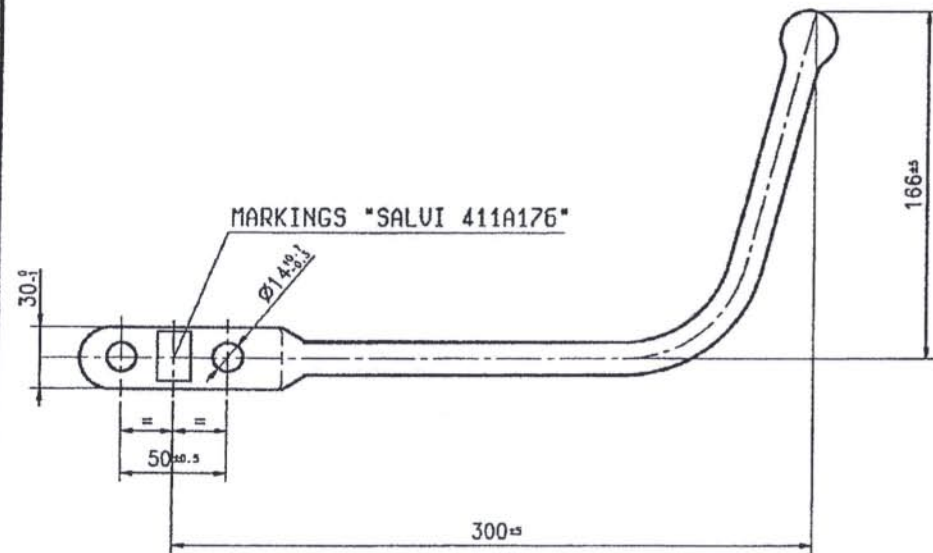
- MADE IN DROP FORGED STEEL
- MINIMUM BREAKING STRENGTH 120 kN
- PIN BALL IEC PUBL.120 STANDARD SIZE 16
- GALVANIZED ACCORDING TO CEI 7-6



- GALVANIZED ACCORDING TO ASTM A 153 - CE1 7-6 - BS 729

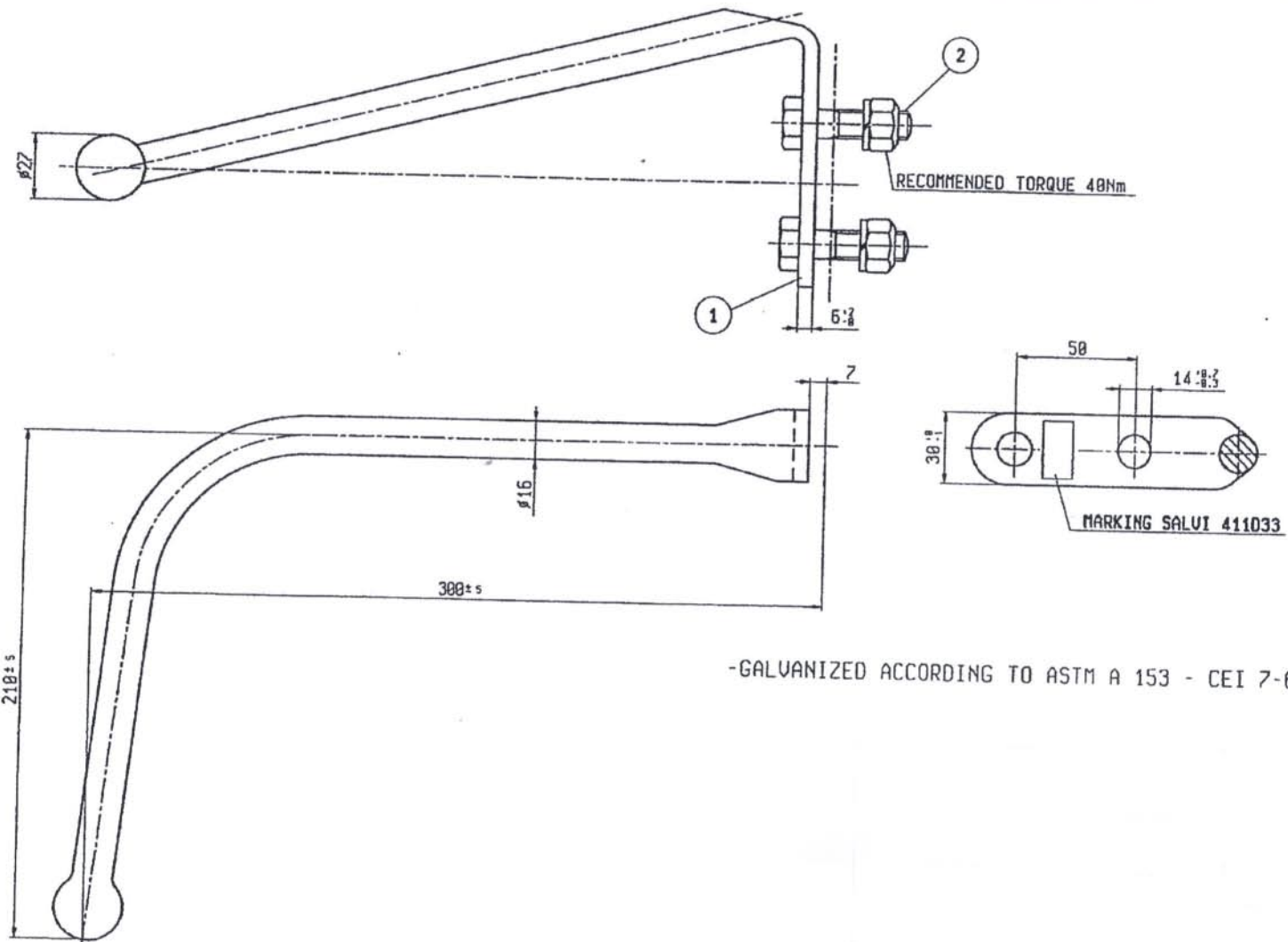
ITEM	DESIGNATION	QTY	MATERIAL	CODE	NOTES
4	M12 hexagonal nut	2	galvanized steel	DPM12	
3	spring washer	2	galvanized steel	RGM12	
2	M12 x 45 bolt	2	galvanized steel	UTE12x45	
1	arcing horn	1	galvanized steel	4110210	

CLD 1



-GALVANIZED ACCORDING TO ASTM A 153 - CEI 7-6 - BS 729

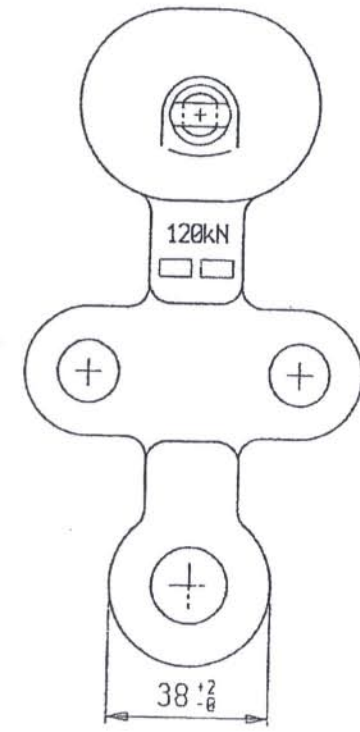
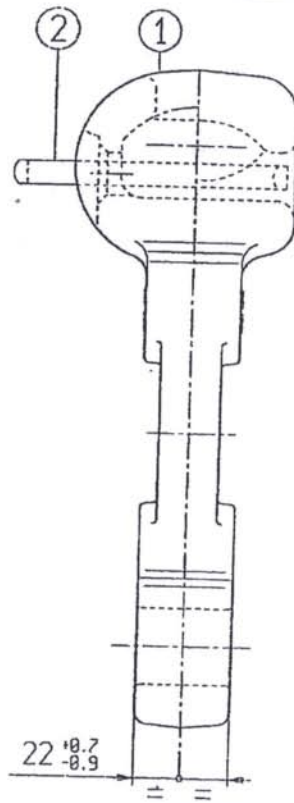
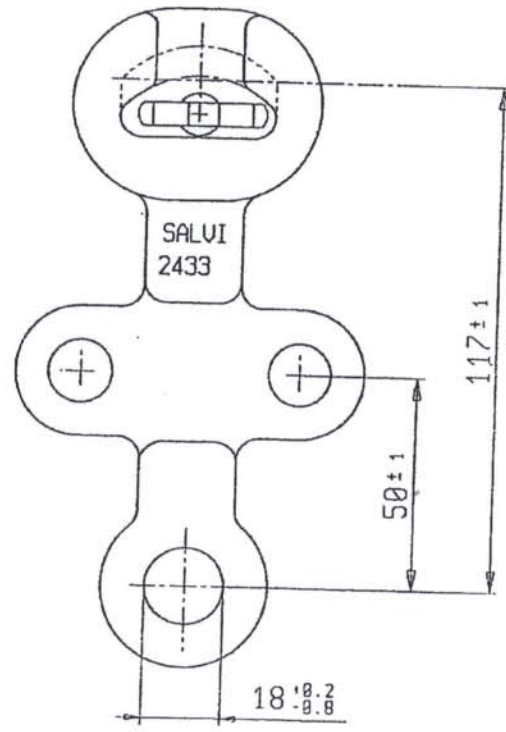
4	SCREEN	2	GALVANIZED STEEL	YTE12X45			0.04 kg
3	SPRING WASHER	2	GALVANIZED STEEL	RGN12			0.01 kg
2	HEXAGONAL NUT	2	GALVANIZED STEEL	DPH12			0.02 kg
1	ARCING ROD	1	GALVANIZED STEEL	411A176			0.26 kg
POS.	DESCRIPTION	N°	MATERIAL	CODE	R. B. S.	NOTES	WEIGHT



-GALVANIZED ACCORDING TO ASTM A 153 - CEI 7-6 - BS 729

ITEM	DENOMINATION	Q.TY	MATERIAL	CODE	NOTES
2	M12 x 45 complete bolt	2	galvanized steel	B2	
1	arcing horn	1	galvanized steel	411033	

LIV 1-6-7-8

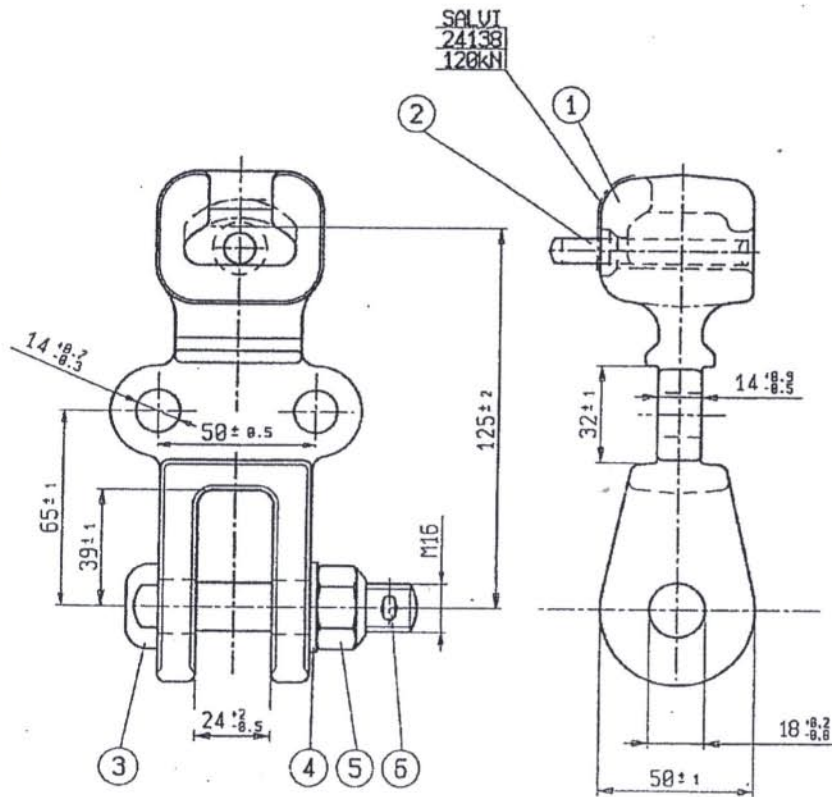


- MADE IN DROP FORGED STEEL
- MINIMUM BREAKING STRENGTH 120 kN
- GALVANIZED ACCORDING TO CEI 7-6 - ASTM A 153 - BS 729
- SOCKET IEC PUBL.128 STANDARD SIZE 16A

2	pin security clip	1	stainless steel	3448	
1	socket tongue	1	galvanized steel	2433	
ITEM	DENOMINATION	Q.TY	MATERIAL	CODE	NOTES

L.10 21-22

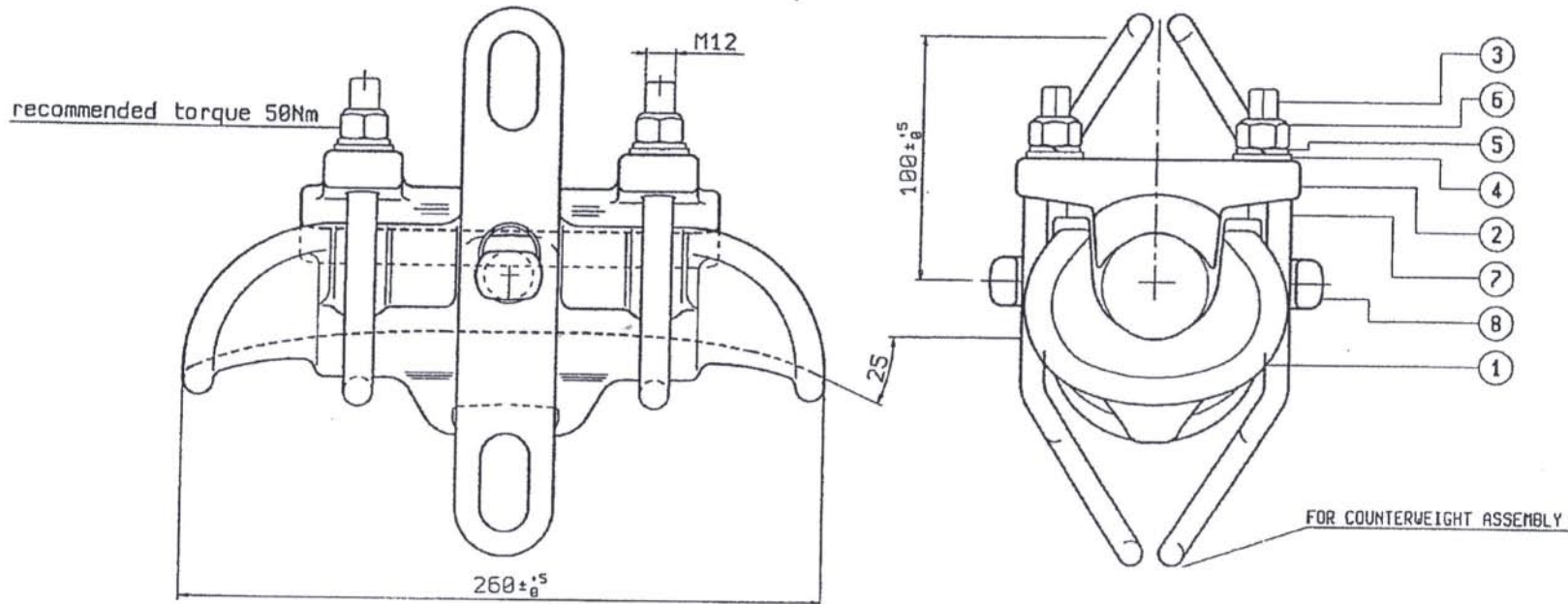
WHERE NOT SPECIFIED TOLERANCES IN ACCORDANCE TO BS 3288 PART.1 UP TO AND INCLUDING 35mm ± 0.7 mm OVER 35mm ± 2



- MADE IN DROP FORGED STEEL
- GALVANIZED ACCORDING TO CEI 7-6
- MINIMUM BREAKING STRENGTH 120kN
- SOCKET IEC PUBL.128 STANDARD SIZE 16A

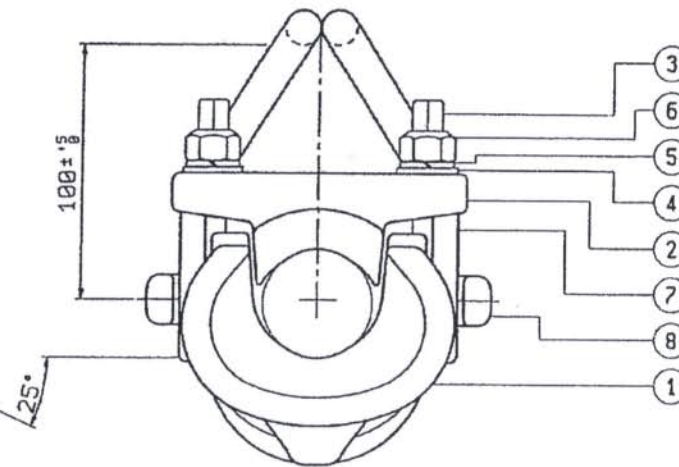
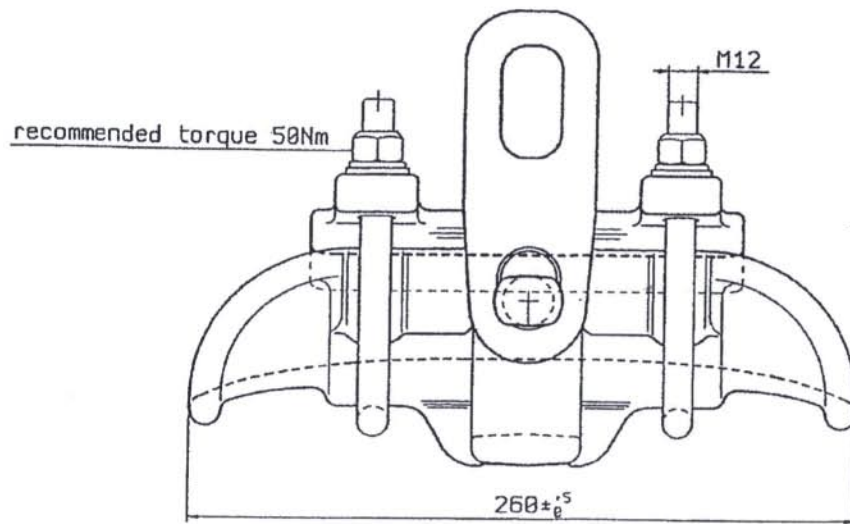
6	cotter pin	1	stainl.steel	3442	
5	M16 hexagonal nut	1	galvanized steel	DPM16	
4	plain washer	1	galvanized steel	RPM16	
3	M16 bolt	1	galvanized steel	UTS16X83	
2	split pin security clip	1	stainl.steel	3448	
1	socket clevis	1	galvanized steel	24138	
ITEM	DENOMINATION	Q. TY	MATERIAL	CODE	NOTES

LIV 1-3-67-18



-MINIMUM BREAKING STRENGTH 120 kN
 -SLIPPING STRENGTH 25% OF NOMINAL BREAKING LOAD OF CONDUCTOR
 -ALL FERROUS PART GALVANIZED
 ACCORDING TO ASTM A 153 - CEI 7-6 - BS 729

ITEM	DESCRIPTOR	N°	MATERIAL	CODE	NOTES
8	suspension body	1	galvanized steel	1245A3	
7	suspension eye	2	galvanized steel	1253A7	
6	hexagonal nut	4	galvanized steel	DPM12	
5	spring washer	4	galvanized steel	RGM12	
4	plain washer	4	galvanized steel	RPM12	
3	U-bolt	2	galvanized steel	35347	
2	keeper	1	aluminium alloy	1248A2	
1	clamp body	1	aluminium alloy	1248A1	

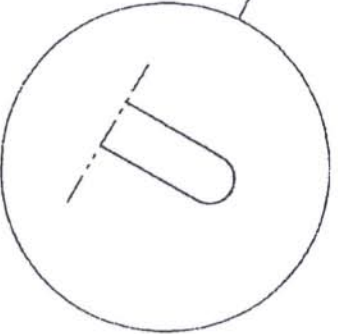
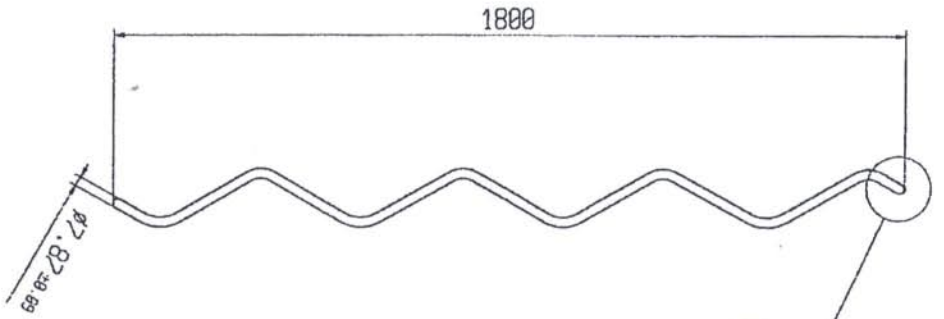
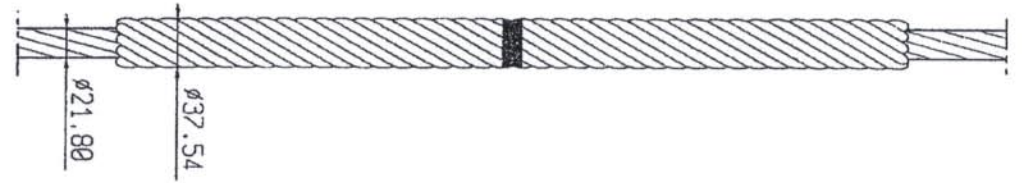


-MINIMUM BREAKING STRENGTH 120 kN
 -SLIPPING STRENGTH 25% OF NOMINAL BREAKING LOAD OF CONDUCTOR
 -ALL FERROUS PART GALVANIZED
 ACCORDING TO ASTM A 153 - CEI 7-6 - BS 729

8	suspension body	1	galvanized steel	1245A3	
7	suspension eye	2	galvanized steel	1253A8	
6	hexagonal nut	4	galvanized steel	DPM12	
5	spring washer	4	galvanized steel	RGM12	
4	plain washer	4	galvanized steel	RPM12	
3	U-bolt	2	galvanized steel	35347	
2	keeper	1	aluminium alloy	1248A2	
1	clamp body	1	aluminium alloy	1248A1	
ITEM	DENOMINATION	N°	MATERIAL	CODE	NOTES

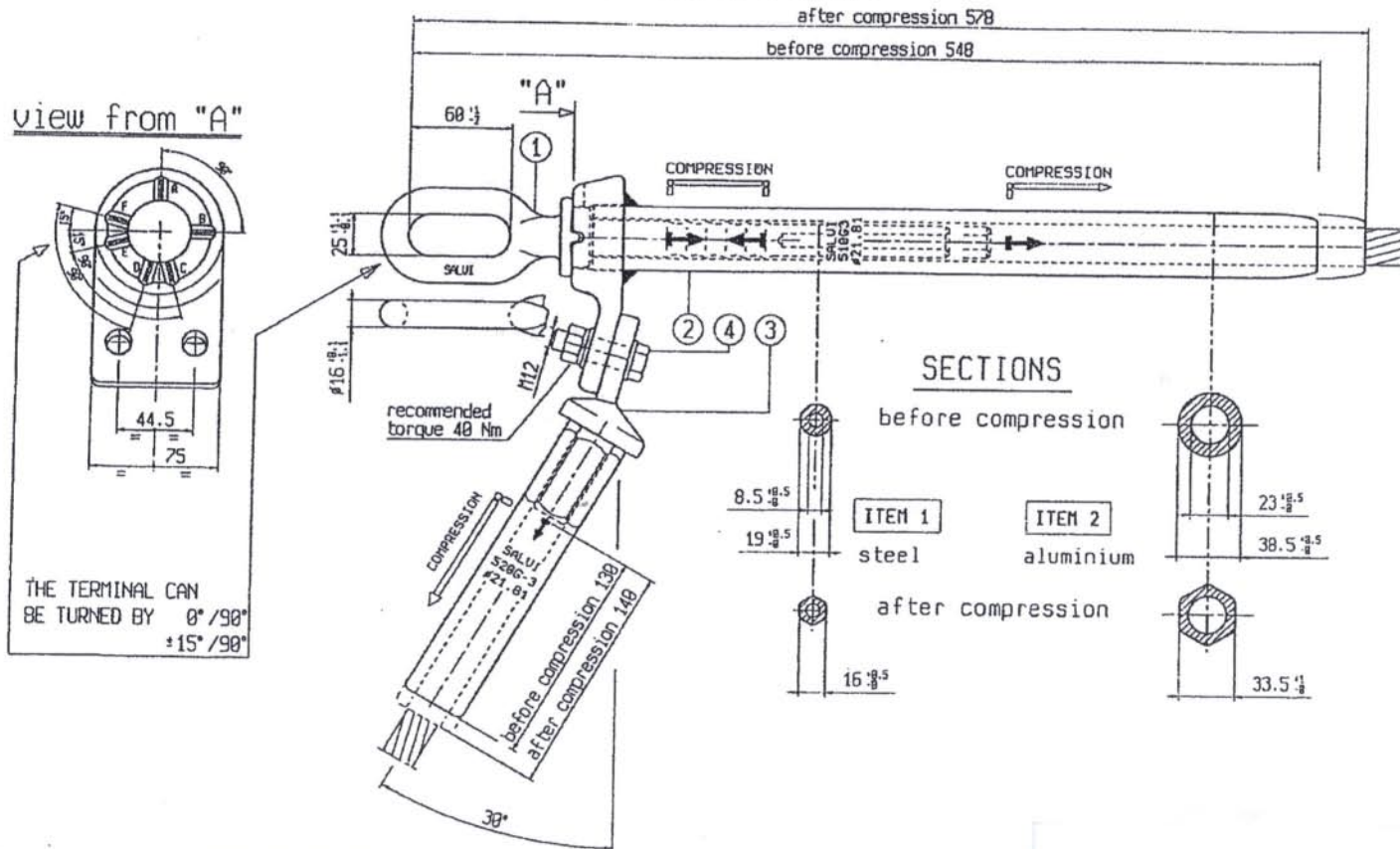
WHERE NOT SPECIFIED TOLERANCES TO BS 3288 PART.1 UP TO AND INCLUDING 35mm : 0.2mm QUER 35mm : 2%

10 rods per set
made in aluminium alloy



SPHERIC ENDED

WHERE NOT SPECIFIED TOLERANCES IN ACCORDANCE TO BS 3288 PART.1 UP TO AND INCLUDING 35 mm $\pm 0.7mm$ OVER 35 mm $\pm 2\%$

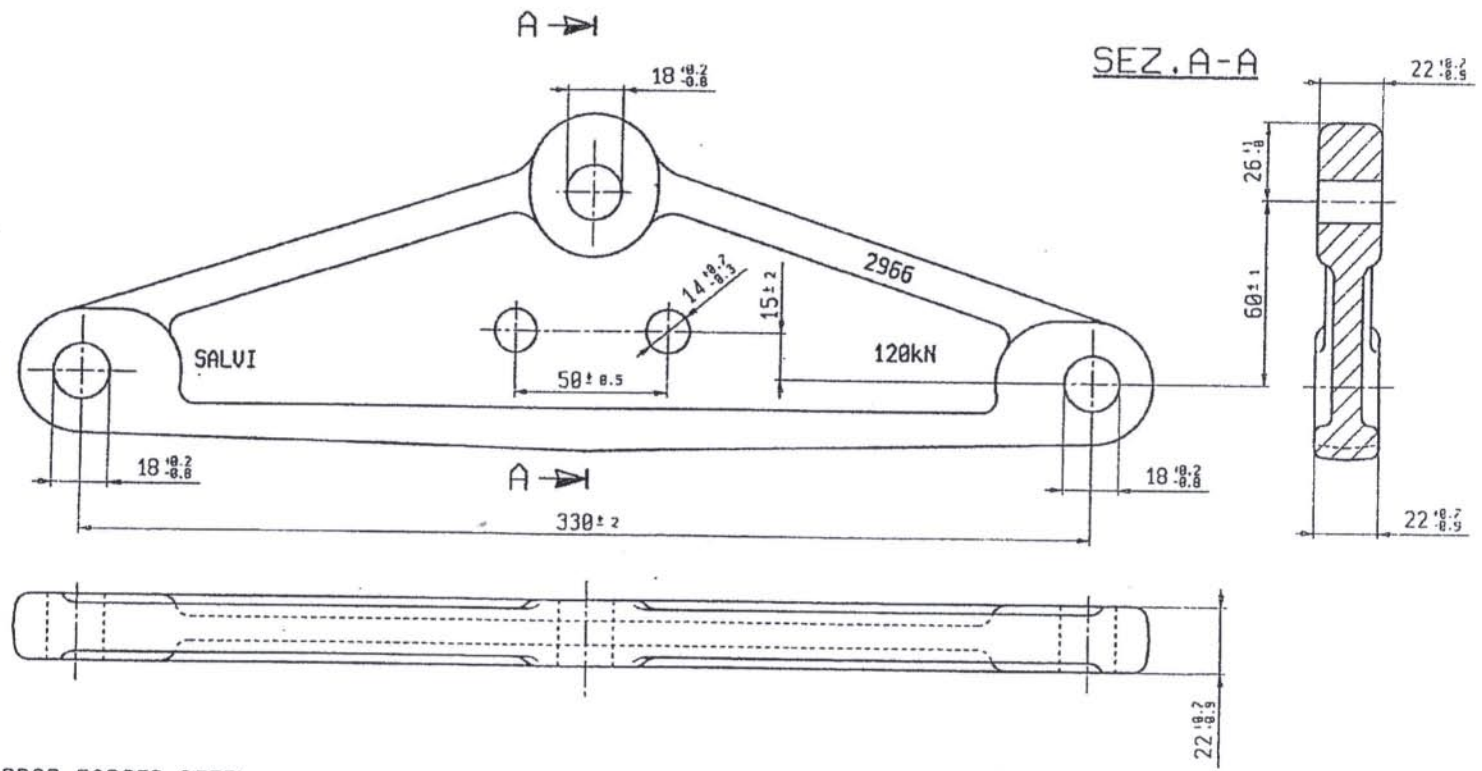


THE TERMINAL CAN
BE TURNED BY $0^\circ/90^\circ$
 $\pm 15^\circ/90^\circ$

- HEXAGONAL COMPRESSION DIE FOR ALUMINIUM cat. n° 590M062
- HEXAGONAL COMPRESSION DIE FOR STEEL cat. n° 591M027
- ULTIMATE STRENGTH: 95% OF CONDUCTOR U.T.S.

ITEM 1-4 galvanized according to ASTM A 153 - CEI 7-6 - BS 729

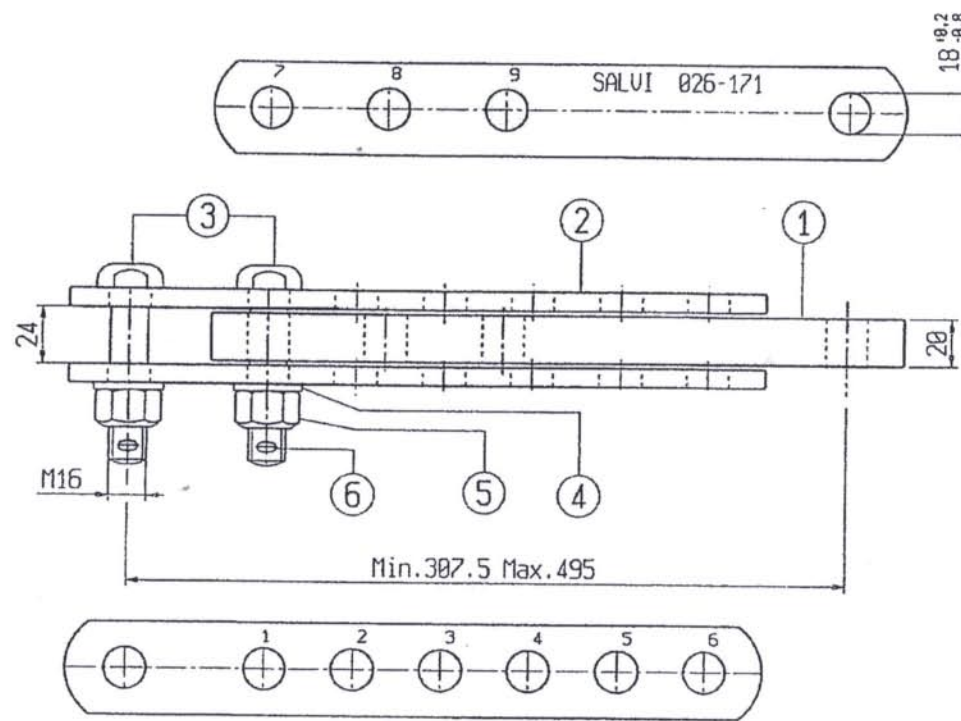
4	M12 complete bolt	2	galvanized steel	B25EF	
3	15° jumper terminal	1	aluminium alloy	520G-3	
2	compression dead end	1	aluminium alloy	510G3	
1	compression eye end	1	galvanized steel	521GS12	
ITEM	DENOMINATION	N°	MATERIAL	CODE	NOTES



- MADE IN DROP FORGED STEEL
- MINIMUM BREAKING STRENGTH 120kN
- GALVANIZED ACCORDING TO ASTM A 153 - CEI 7-6 - BS 729

ITEM 2	ITEM 1	LENGTH	STEP
1	- 7	307,5	12,5
4	- 9	320	12,5
3	- 8	332,5	12,5
2	- 7	345	12,5
5	- 9	357,5	12,5
4	- 8	370	12,5
3	- 7	382,5	12,5
6	- 9	395	12,5
5	- 8	407,5	12,5
4	- 7	420	25
6	- 8	445	12,5
5	- 7	457,5	37,5
6	- 7	495	

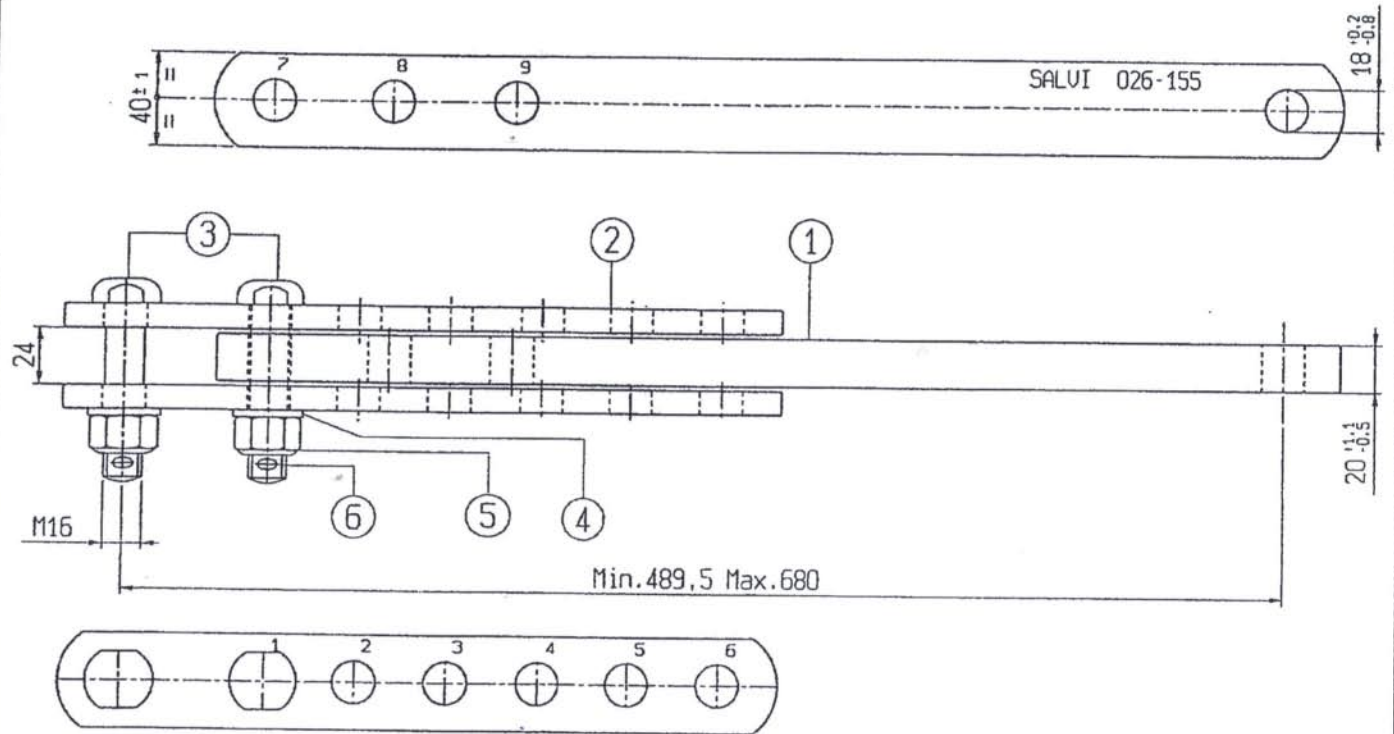
WHERE NOT SPECIFIED TOLERANCES IN ACCORDANCE TO BS 3288 PART.1 UP TO AND INCLUDING 35 mm \pm 0,2mm OVER 35 mm \pm 0,25



-ITEM 1,2,3,4,5 HOT DIP GALVANIZED ACCORDING TO
ASTM A 153 - CEI 7-6 - BS 729
-MINIMUM BREAKING STRENGTH 160 kN

ITEM	DENOMINATION	N°	MATERIAL	CODE	NOTES
6	cotter pin	2	stainless steel	3442	
5	M16 hexagonal nut	2	galvanized steel	DPM16	
4	plain washer	2	galvanized steel	RPM16	
3	M16 x 75 bolt	2	galvanized steel	UTS16X75	
2	extension link	2	galvanized steel	026-171-2	
1	extension link	1	galvanized steel	026-171-3	

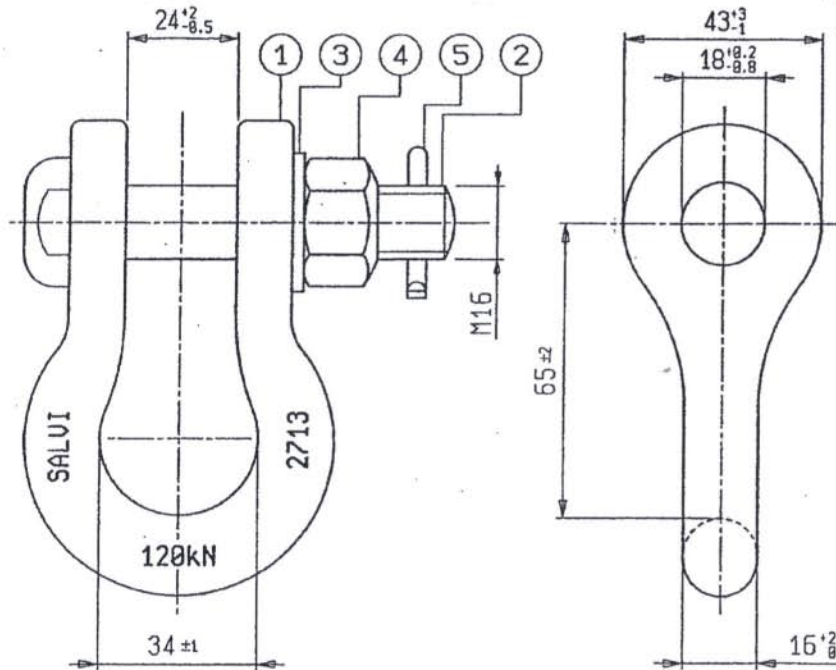
ITEM 2	ITEM 1	LENGTH	STEP
1	- 7	489,5	12,7
4	- 9	502,2	12,7
3	- 8	514,9	12,7
2	- 7	527,6	12,7
5	- 9	540,3	12,7
4	- 8	553	12,7
3	- 7	565,7	12,7
6	- 9	578,4	12,7
5	- 8	591,1	12,7
4	- 7	603,8	25,4
6	- 8	629,2	12,7
5	- 7	641,9	38,1
6	- 7	680	



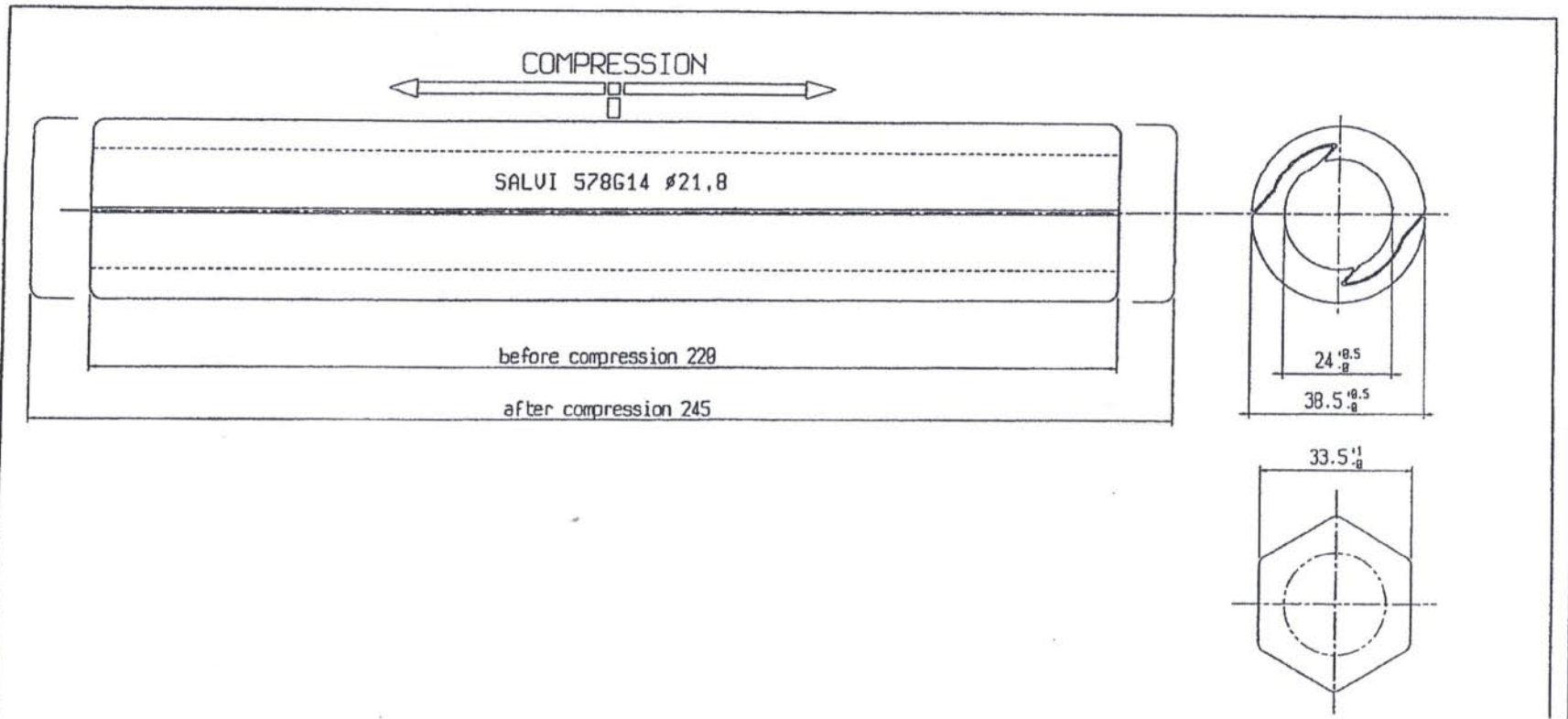
-GALVANIZED ACCORDING TO ASTM A 153 - CEI 7-6 - BS 729
 -MINIMUM BREAKING STRENGTH 120kN

6	cotter pin	2	stainless steel	3442	
5	M16 hexagonal nut	2	galvanized steel	DPM16	
4	plain washer	2	galvanized steel	RPM16	
3	M16 x 75 bolt	2	galvanized steel	UTS16X75	
2	extension link	2	galvanized steel	026-137-2	
1	extension link	1	galvanized steel	026-155-1	
ITEM	DENOMINATION	N°	MATERIAL	CODE	NOTES

ITEM	DENOMINATION	Q. TY	MATERIAL	CODE	NOTES
1	shackle	1	galvanized steel	2713	
2	M16 bolt	1	galvanized steel	UTS16X83	
3	plain washer	1	galvanized steel	RPM15	
4	M16 hexagonal nut	1	galvanized steel	DPM16	
5	cotter pin	1	stainless steel	3442	



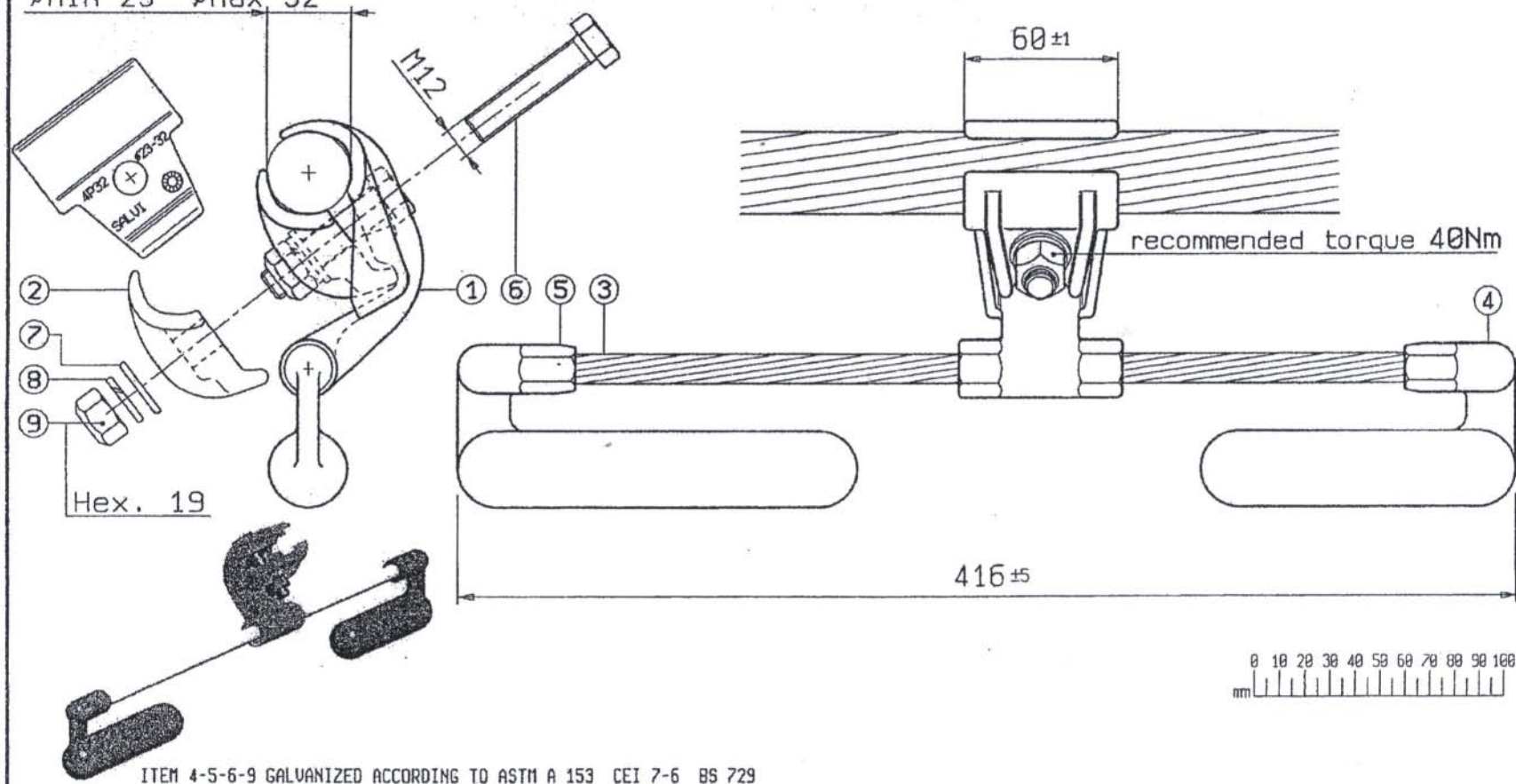
- MADE IN DROP FORGED STEEL
- MINIMUM BREAKING STRENGTH 120 kN
- GALVANIZED ACCORDING TO CEI 7-6 ASTM A 153 BS 729



-MADE IN ALUMINIUM ALLOY
 -HEXAGONAL COMPRESSION DIE cat. n° 590M062

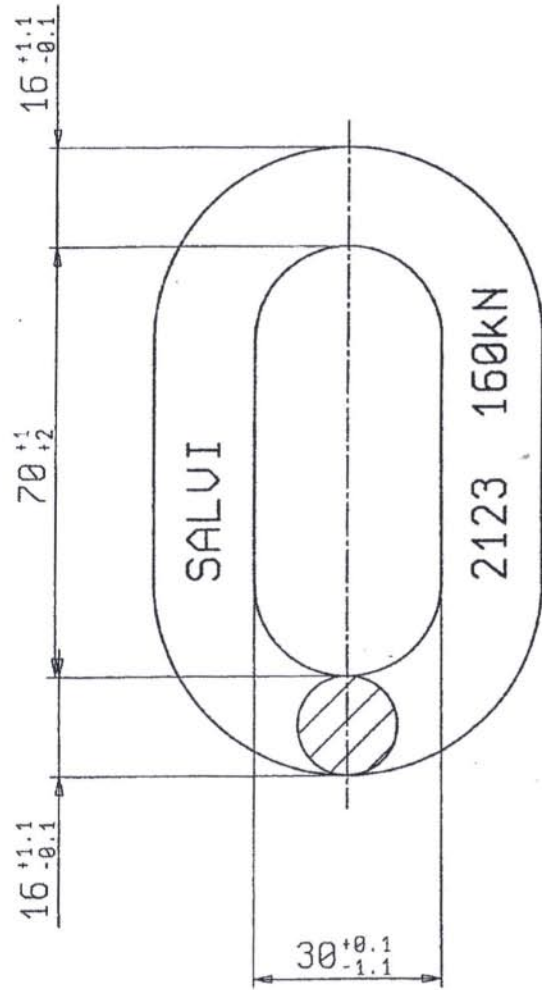
WHERE NOT SPECIFIED TOLERANCES IN ACCORDANCE TO BS 3288 PART.1 UP TO AND INCLUDING 35 mm $\pm 0,7$ mm OVER 35 mm ± 2

ØMIN 23 ØMax 32



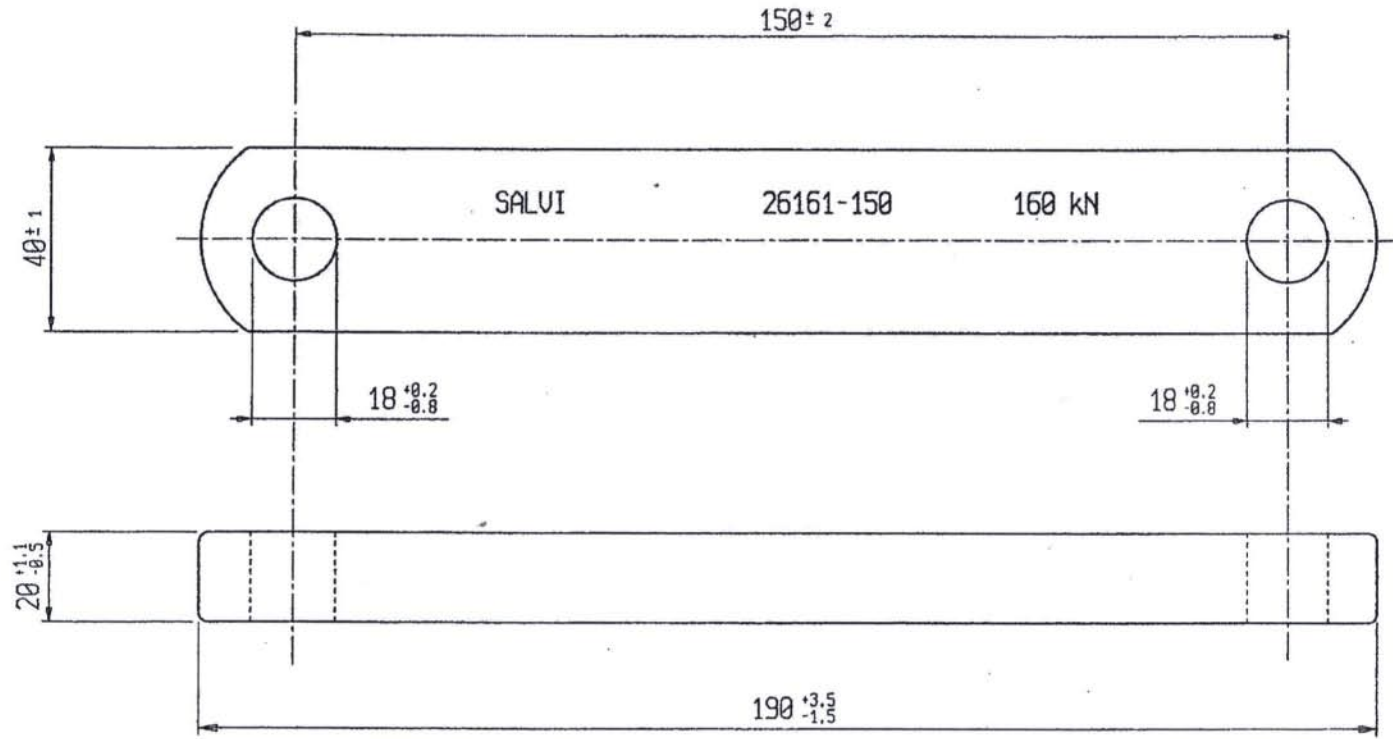
ITEM	DENOMINATION	Q.TY	MATERIAL	CODE	NOTES
9	hexagonal nut	1	galvanized steel	DPM12	
8	spring washer	1	stainless steel	RGM12INOX	
7	plain washer	1	stainless steel	RPM12NX	
6	bolt	1	galvanized steel	UTE12X68	
5	damper weight	1	galvanized steel	4RFG-1	
4	damper weight	1	galvanized steel	4RFG-2	
3	damper cable	1	galvanized steel	4RFG-8	according to UNI7304 C1.A
2	cover half clamp	1	aluminium alloy	4P32	
1	hook half clamp	1	aluminium alloy	4M32	

LEU 1



- MADE IN DROP FORGED STEEL
- MINIMUM BREAKING STRENGTH 160kN
- HOT DIP GALVANIZED ACCORDING TO CEI 7-6 - ASTM A 153 - BS 729

WHERE NOT SPECIFIED TOLERANCES IN ACCORDANCE TO BS 3288 PART.1 UP TO AND INCLUDING 35mm ± 0.7 mm OVER 35mm ± 2



- MADE IN ROLLED PLATE STEEL
- MINIMUM BREAKING STRENGTH 160 kN
- GALVANIZED ACCORDING TO ASTM A 153 - CEI 7-6 - BS 729