

PAJISJE FILTRUESE DHE QARKULLUESE E VAJIT TE TURBINES (FILTERPRESA MEKANIKE)



TE DHENAT TEKNIKE

PERDORIMI	PAJISJE MOBILE PER FILTRIM DHE QARKULLIM TE VAJIT TE TURBINES GJATE REMONTEVE
PAISUR ME AKSESOR SHTESE	VALVUL 3 - RRUGESHE PER DRANAZHIM TE SHPEJTE (PA KALUAR NE ELEMENTIN FILTRUES)
POMPA ME KAPACITET	45 ÷ 50 lit/min
MOTORI	Njëfazor, 230 V AC
FUQIA E MOTORIT	0,75 kW
NUMRI I RROTULLIMEVE	1450 rrot/min
GJATESITE E TUBA-GOMAVE	
- LINJA E THITHJES	3 m
- LINJA E DERGIMIT	4 m

MBROJTJET

PAISJA ESHTË E PAISUR ME	VALVUL SIGURIE TE RREGJISTRUAR NE P = 6 bar
PAISJA ESHTË E PAISUR ME	INDIKATOR BLOKIMI (ELEKTRIK), PER TE STAKUAR MOTORIN NE RAST BLOKIMI, SI DHE ME LLAMPE SINJALIZUESE PER BLOKIM

PJESE REZERVE TE PAISJES

ELEMENTE FILTRUES	10 (dhjetë) Cope
ME SHKALLE PASTRIMI	5 μ

ELEKTRO - VALVULA E SHPËLARJES - AUTOMATIKE TE FILTRIT "HYDAC"



Pamje e Elektro -Valvules së shpëlarjes automatike te Filtrit "HYDAC", ne vend-montimin e saj

TE DHENAT TEKNIKE

TE AKTUATORIT ELEKTRIKE "MODEL SQ 10", TE PAISJES : ELEKTRO - VALVUL E SHPËLARJES - AUTOMATIKE TE FILTRIT "HYDAC"

VENDI I MONTIMIT FILTRI KRYESOR I UJIT FTOHES TE AGREGATIT "HYDAC"
MANOVRIMI ME ANE TE MOTORIT ELEKTRIK
MODELI I AKTUATORIT SQ 10

Motori :

- MOTORI ELEKTRIK 1 FAZOR
- FUQIA E MOTORIT 0,06 KW
- TENSIONI 230 V
- RRYMA 1,2 A
- FREKUENCA 50 Hz
- KLAS. I PUNES SE MOTORIT..... 30%

Aktuatori :

- MOMENTI RROTULLUES 100 Nm
- NUMRI I RROTULLIMEVE 2,5 rrot/min
- MAKSIMUMI I RROTULLIMIT ... 0,25 rrotullime (ose 1/4 rrotullim)



MODÈLES / MODELS / MODELLE : SQ
(applicable pour/ suitable for MAS & MBS)

NR1248_revB_PVE/0
AIC : 5100182



Pamje e katalogut të përgjithshëm ku përfshihet edhe modeli i Aktuatorit SQ 10 (SQ4 deri ne SQ 15)

V.O. Prodhuesi i paisjes origjinale të Actuator-it që është instaluar në objekt është : **BERNARD CONTROLS**

TE DHENAT TEKNIKE NE TARGETIN

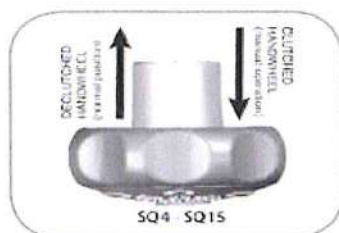
E AKTUATORIT ELEKTRIK , MODEL SQ 10, TE PAISJES : ELEKTRO - VALVUL E SHPËLARJES - AUTOMATIKE TE FILTRIT "HYDAC"



Foto e targetit te Aktuatorit elektrik , Model SQ 10

3 > HANDWHEEL OPERATION AND DECLUTCHING

In general, the handwheel does not turn during electrical operation. Even if turning, the solid handwheel does not have any protruding part and therefore does not present any risk of any kind for the operator. Moreover, for the actuators with the highest torque, the torque limit system brings an additional level of protection.



SQ4 to SQ15:

These actuators are equipped with a manually declutchable handwheel. To operate manually the actuator, turn while pulling the handwheel in order to mechanically engage it. To declutch the handwheel, just push it back towards the actuator body.

Valvula e shpëlarjes mekanike dhe instruksioni i manovrimit të saj (në anglisht), pjesë e katalogut të përgjithshëm të saj.

TE DHENAT TEKNIKE

TE VALVULES ME “FARFALLE” “MODEL R 480”, ME BOSHTIN RROTULLES TE SAJ,

TE PAISJES :

ELEKTRO - VALVUL E SHPËLARJES - AUTOMATIKE TE FILTRIT “HYDAC”

VENDI I MONTIMIT **FILTRI KRYESOR I UJIT FTOHES TE AGREGATIT “HYDAC”**

MANOVRIMI **E MOTORIZUAR, PREJ AKTUATORIT ELEKTRIK, MODEL SQ 10**

TIPI I VALVULES **ME “FARFALLE” & ME BOSHTIN RROTULLUES TE SAJ**

TEMP. E OPERIMIT **- 10°C ÷ + 150°C**

KODI I VALVULES **480 (Kodi ne target : 480)**

DIAMETRI NOMINAL **DN 50 (Kodi ne target : 50)**

PROFILI I TRUPIT **WAFER (Kodi ne target : W)**

PRESIONI I PUNES **PN 10 (bar) (Kodi ne target : 2)**

MENYRA E BASHKIMIT **ME FLANXHE EN 1092 , FTF EN558, Seria 20 (Kodi ne target : 3)**

MATERIALI I TRUPIT **EN-GJS-400-15 (GGG-40), ME VESHJE “EPOXY”, Trashësi - 250 µm
(Kodi ne target : 2)**

MATERIALI I FARFALLES **1.4408 (Kodi ne target : A)**

MATERIALI I BOSHTIT **1 (Kodi ne target : 1)**

MATERIALI I GOMINES **FPM (FKM) (Kodi ne target : V)**

MENYRA E FIKSIMIT **VENDOSSET ME DORE (PRA E LIRSHME), (Kodi ne target : L)
(E GOMINES HERMETIZUESE)**

TIPI I FLLANXHES **ISO F05, PAISUR “ME VESHE” (me Ø18, ku futen bulonat shtrëngues)**

KENDI I AKSEVE TE VESHEVE.. **90°**

NUMRI I BULONAVE **4 (kater)**

FILETI I BULONAVE **M16**

DIAMETRI PRIMITIV **Ø125**
(I VEND. SE BULONAVE)



Foto të a) trupit te valvules, b) farfallës, c) gominës së sedies dhe d) boshtit të saj, pas demontimit të saj.
V.O. Prodhuesi i paisjes origjinale të valvulës “farfalle” që është instaluar në objekt është : GEMÛ

FOTO TE NDRYSHME TE VALVULES "FARFALLE", MODEL R 480



Foto e valvules "farfalle" Model 480 (DN50), pas demontimit të saj nga vendmontimi.

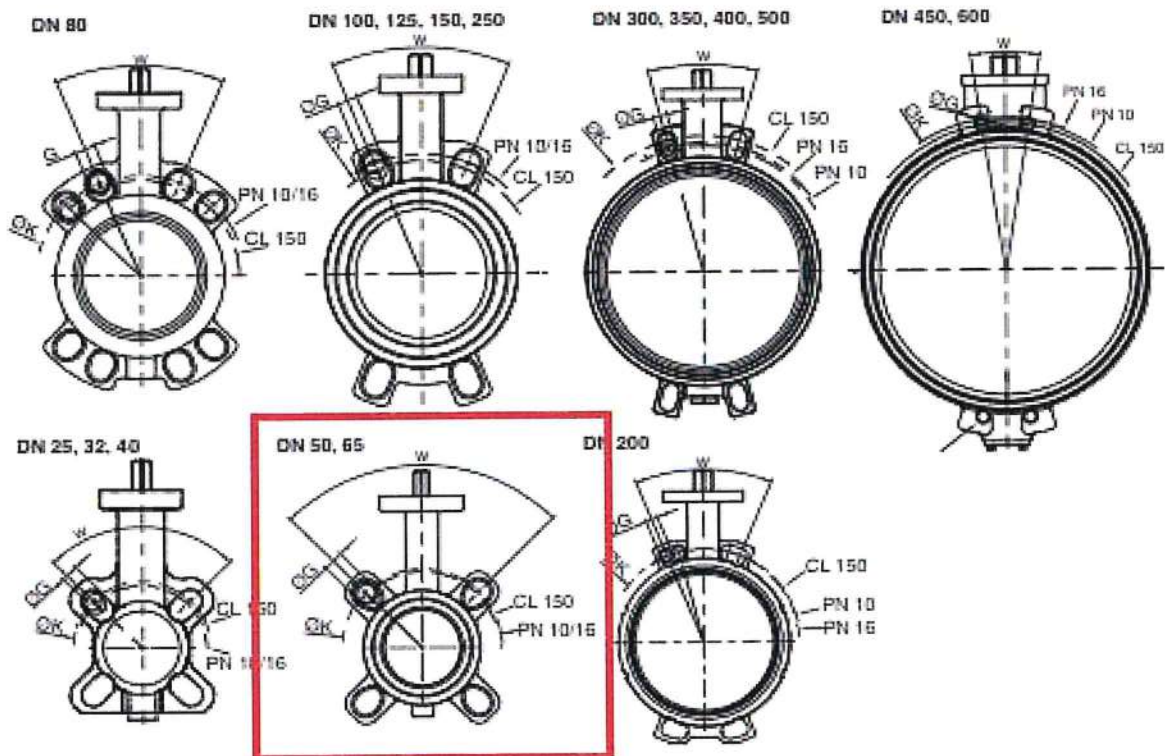


Foto të valvules "farfalle" Model 480 (DN50), pas demontimit të saj nga vendmontimi.

Flange, body configuration - Wafer (code W)

DN	PN 10				PN 16				ASME B16.5 cl. 150			
	K	n	G	w	K	n	G	w	K	n	G	w
25	85	4	M12	90°	85	4	M12	90°	79.4	4	1/2"	90°
32	100	4	M16	90°	100	4	M16	90°	88.9	4	1/2"	90°
40	110	4	M16	90°	110	4	M16	90°	98.4	4	1/2"	90°
50	125	4	M16	90°	125	4	M16	90°	120.6	4	5/8"	90°
65	145	4	M16	90°	145	4*	M16	90°	139.7	4	5/8"	90°
80	160	8	M16	45°	160	8	M16	45°	152.4	4	5/8"	90°
100	180	8	M16	45°	180	8	M16	45°	190.5	8	5/8"	45°
125	210	8	M16	45°	210	8	M16	45°	215.9	8	3/4"	45°
150	240	8	M20	45°	240	8	M20	45°	241.3	8	3/4"	45°
200	295	8	M20	45°	295	12	M20	30°	298.5	8	3/4"	45°
250	350	12	M20	30°	355	12	M24	30°	362	12	7/8"	30°
300	400	12	M20	30°	410	12	M24	30°	431.8	12	7/8"	30°
350	460	16	M20	22°	470	16	M24	22.5°	476.3	12	1"	30°
400	515	16	M24	22.5°	525	16	M27	22.5°	539.8	16	1"	22.5°
450	565	20	M24	18°	585	20	M27	18°	577.9	16	1 1/8"	22.5°
500	620	20	M24	18°	650	20	M30	18°	635	20	1 1/8"	18°
600	725	20	M27	18°	770	20	M33	18°	749.3	20	1 1/4"	18°

n = number of bolts
* non-standard

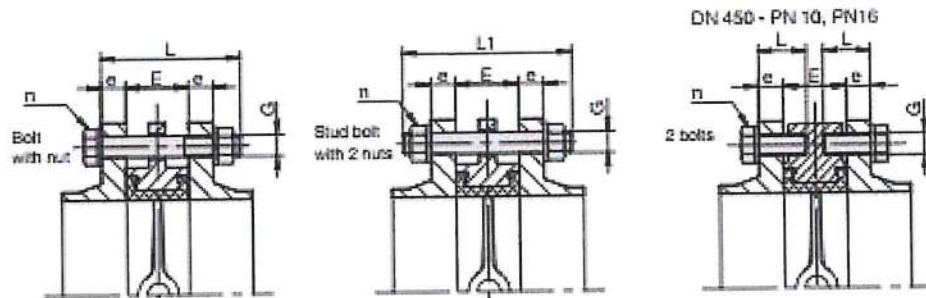


480, 181, 487, 488

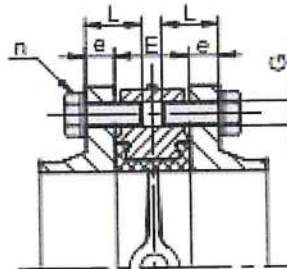
Connection dimensions [inch]

Body configuration - Wafer (code W)																
DN	E	PN 10					PN 16					ASME B16.5 cl. 150				
		e	L	L1	n	G	e	L	L1	n	G	e	L	L1	n	G
25	0.98	0.71	3.35	3.94	4	M12	0.71	3.35	3.94	4	M12	0.56	3.35	3.94	4	1/2"-13 UNC
40	1.30	0.71	3.54	4.33	4	M16	0.71	3.54	4.33	4	M16	0.69	3.54	4.33	4	1/2"-13 UNC
50	1.69	0.71	3.94	4.72	4	M16	0.71	3.94	4.72	4	M16	0.75	3.94	4.72	4	5/8"-11 UNC
65	1.81	0.71	3.94	4.72	4	M16	0.71	3.94	4.72	4	M16	0.87	4.33	5.12	4	5/8"-11 UNC
80	1.81	0.79	4.33	5.12	8	M16	0.79	4.33	5.12	8	M16	0.94	4.33	5.12	4	5/8"-11 UNC
100	2.05	0.79	4.33	5.12	8	M16	0.79	4.33	5.12	8	M16	0.94	4.72	5.51	8	5/8"-11 UNC
125	2.20	0.87	4.72	5.51	8	M16	0.87	4.72	5.51	8	M16	0.94	5.12	5.91	8	3/4"-10 UNC
150	2.20	0.87	5.12	5.91	8	M20	0.87	5.12	5.91	8	M20	1.00	5.12	5.91	8	3/4"-10 UNC
200	2.36	0.94	5.12	6.30	8	M20	0.94	5.12	6.30	8	M20	1.13	5.51	6.30	8	3/4"-10 UNC
250	2.68	1.02	5.91	6.69	12	M20	1.02	5.91	6.69	12	M24	1.19	6.30	7.09	12	7/8"- 9 UNC
300	3.07	1.02	6.30	7.09	12	M20	1.10	6.30	7.09	12	M24	1.25	6.69	7.48	12	7/8"- 9 UNC
350	3.07	1.02	6.69	7.09	16	M20	1.18	6.69	7.48	16	M24	1.37	7.09	7.87	12	1"- 8 UNC
400	4.02	1.02	7.09	8.27	16	M24	1.26	7.87	8.66	16	M27	1.44	8.27	9.06	16	1"- 8 UNC
450*	4.49	1.02	7.48	8.66	16	M24	1.26	8.27	9.45	16	M27	1.56	9.06	9.84	16	1 1/8"-7 UNC
			2.36					8								
500	5.00	1.10	8.27	9.06	20	M24	1.34	9.06	10.24	20	M30	1.81	9.84	11.02	20	1 1/8"-7 UNC
600	6.06	1.10	9.45	10.63	20	M27	1.42	10.24	11.42	20	M33	1.87	11.02	12.20	20	1 1/4"-7 UNC

* Note: The butterfly valve in DN 450 must be fastened to the flange using eight threaded bolts. The 16 remaining flange holes can be joined using through bolts or stud bolts.



Body configuration - Lug (code L)													
DN	E	PN 10				PN 16				ASME B16.5 cl. 150			
		e	L	n	G	e	L	n	G	e	L	n	G
50	1.69	0.71	1.38	8	M16	0.71	1.38	8	M16	0.75	1.38	8	5/8"-11 UNC
65	1.81	0.71	1.57	8	M16	0.71	1.57	8	M16	0.87	1.77	8	5/8"-11 UNC
80	1.81	0.79	1.57	16	M16	0.79	1.57	16	M16	0.94	1.77	8	5/8"-11 UNC
100	2.05	0.79	1.77	16	M16	0.79	1.77	16	M16	0.94	1.77	16	5/8"-11 UNC
125	2.20	0.87	1.97	16	M16	0.87	1.97	16	M16	0.94	1.97	16	3/4"-10 UNC
150	2.20	0.87	1.97	16	M20	0.87	1.97	16	M20	1.00	1.97	16	3/4"-10 UNC
200	2.36	0.94	1.97	16	M20	0.94	1.97	24	M20	1.13	2.17	16	3/4"-10 UNC
250	2.68	1.02	2.36	24	M20	1.02	2.36	24	M24	1.19	2.36	24	7/8"- 9 UNC
300	3.07	1.02	2.56	24	M20	1.10	2.56	24	M24	1.25	2.76	24	7/8"- 9 UNC
350	3.07	1.02	2.56	32	M20	1.18	2.56	32	M24	1.37	2.76	24	1"- 8 UNC
400	4.02	1.02	2.95	32	M24	1.26	3.15	32	M27	1.44	3.35	32	1"- 8 UNC

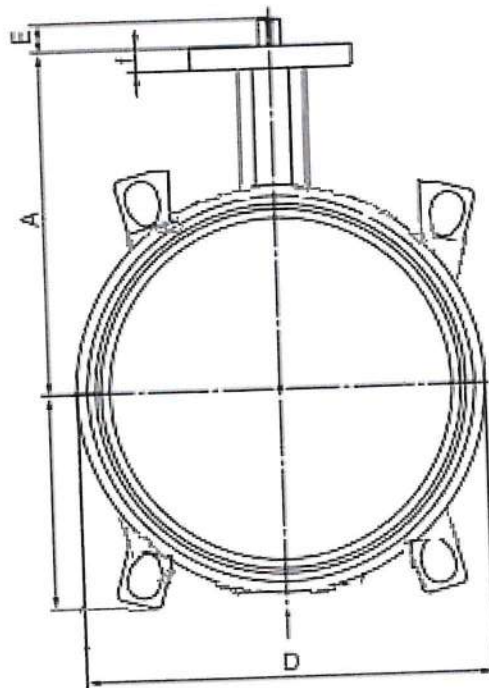


n = number of bolts

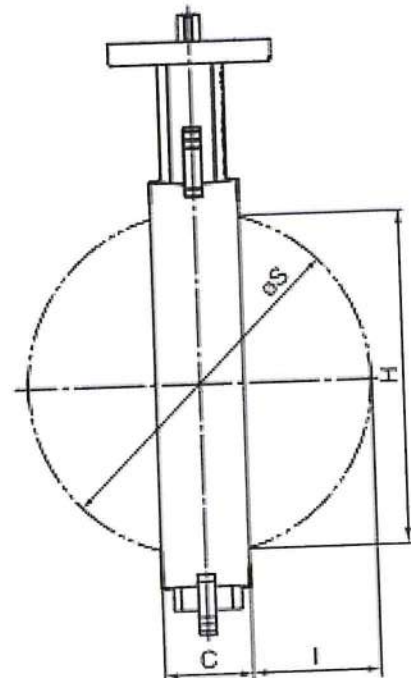
Body dimensions [inch]

Body configuration - Wafer (code W)																	
DN	A	B	C	D	E		H [*] _{max}	øS _{max}	I	□G		ISO	a	øb	f	oy	Weight [lbs]
					PS10 PS16	PS3				PS10 PS16	PS3						
25	3.94	1.63	0.98	2.34	0.75	-	0.63	1.04	0.02	0.35	-	F05	□1.97	1.97	0.47	0.28	2.6
40	4.72	2.12	1.3	2.98	0.75	-	0.96	1.63	0.16	0.35	-	F05	□1.97	1.97	0.47	0.28	3.3
50	4.72	2.37	1.69	3.58	0.75	-	1.08	2.03	0.16	0.35	-	F05	ø2.56	1.97	0.47	0.28	6.6
65	5.51	2.66	1.81	4.37	0.75	-	1.87	2.63	0.40	0.43	-	F05	ø2.56	1.97	0.47	0.28	7.9
80	5.71	3.56	1.81	5.12	0.75	-	2.63	3.22	0.69	0.43	-	F05	ø2.56	1.97	0.47	0.28	8.8
100	6.54	4.14	2.05	5.91	0.75	-	3.43	4.01	0.97	0.55	-	F05	ø2.56	1.97	0.55	0.28	12.1
125	7.36	4.71	2.20	7.05	0.98	-	4.46	5.00	1.39	0.67	-	F07	ø3.54	2.76	0.63	0.35	16.5
150	7.87	5.18	2.20	8.27	0.98	-	5.54	5.98	1.88	0.67	-	F07	ø3.54	2.76	0.63	0.35	19.0
200	9.45	6.30	2.36	10.39	1.26	0.98	7.59	7.96	2.79	0.87	0.67	F10	ø4.92	4.02	0.67	0.43	28.0
250	10.43	7.69	2.68	12.36	1.26	0.98	9.54	9.93	3.62	0.87	0.67	F10	ø4.92	4.02	0.67	0.43	48.9
300	11.42	9.30	3.07	14.33	1.26	0.98	11.51	11.93	4.42	0.87	0.67	F10	ø4.92	4.02	0.67	0.43	67.9
350	12.64	10.47	3.07	17.32	1.10	1.10	12.95	13.28	5.12	1.06	0.87	F12	□5.12	4.92	0.59	0.51	105.8
400	13.66	12.13	4.02	19.09	1.46	1.10	14.92	15.41	5.71	1.42	1.06	F14	□6.30	5.51	0.79	0.67	158.7
450	14.65	13.11	4.49	21.30	1.46	1.10	16.85	17.38	6.46	1.42	1.06	F14	□6.30	5.51	0.79	0.67	209.4
500	15.67	14.09	5.00	23.62	1.46	1.10	18.82	19.43	7.22	1.42	1.06	F14	□6.30	5.51	0.79	0.67	264.5
600	18.50	17.40	6.06	27.56	1.85	1.46	22.60	23.36	8.66	1.81	1.42	F16	□7.87	6.50	0.94	0.83	423.3

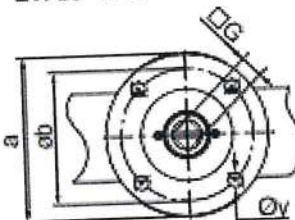
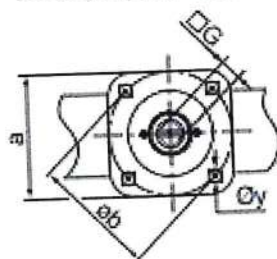
*Please note dimension H to prevent disc binding on internal pipe



DN 25, 40, 350 - 600



DN 50 - 300



Availability / Body configuration code / Connection

Flanges	Wafer (code)																	
	20	25	32	40	50	65	80	100	125	150	200	250	300	350	400	450	500	600
DIN EN1092 PN06	3	3	3	3	3	3	3	3	3	3	3	3	3	-	-	-	-	-
DIN EN1092 PN10	3	3	3	3	3	3	3	3	3*	3	3	3*	3*	3	3	3	3	3
DIN EN1092 PN16	3	3	3	3	3	3	3	3	3*	3	3	3	3*	3	3	3	3	3
ASME B16.5 cl.150	D	D	D	D	D	D	D	D	D	D	D	D	D	D	D	D	D	D
AS 2129 D	T	T	T	T	T	-	-	T*	T*	T*	T*	T*	T*	T	-	-	-	-
AS 2129 E	U	U	U	U	U	-	-	U	U*	U	U*	U*	U*	U	-	-	-	-
JIS 5 K	K	K	K	K	K	K	K	K	K	K	-	-	-	-	-	-	-	-
JIS 10 K	G	G	G	G	G	G	G	G	G	G	G	-	-	-	H	-	-	-
BS 10 D	H	H	H	H	H	-	-	-	H	-	-	-	-	-	-	S	-	-
BS 10 E	S	S	S	S	S	-	-	S	S	S	S	-	-	S	-	-	-	-

* Note: During installation it is important to centrally align the butterfly valve

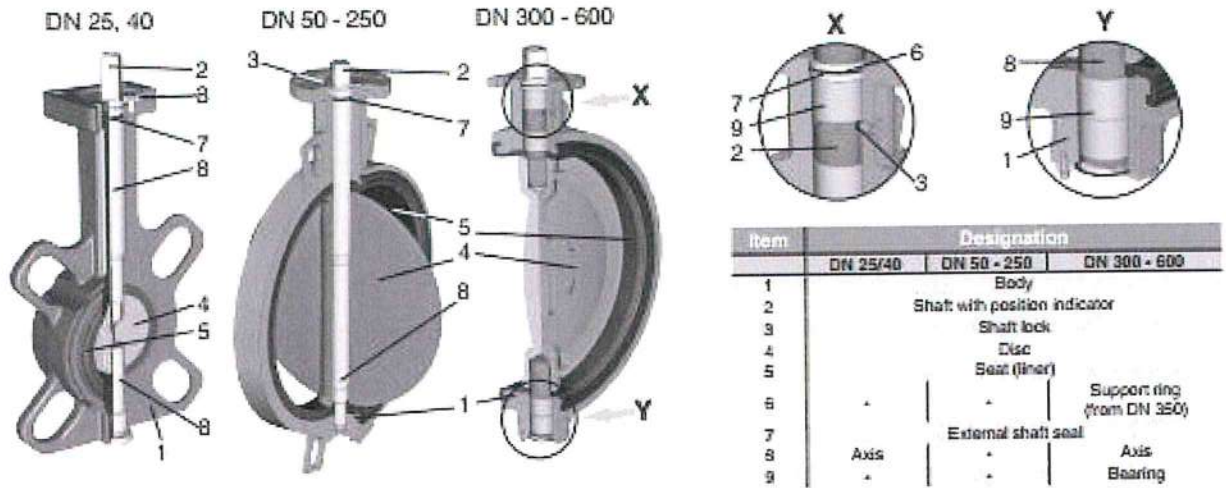
Flanges	Lug (code)										
	50	65	80	100	125	150	200	250	300	350	400
DIN EN1092 PN06	1	1	1	1	1	1	1	1	1	-	-
DIN EN1092 PN10	3	3*	3	3	3	3	3	3	3	3	3
DIN EN1092 PN16	3	3*	3	3	3	3	3	3	3	3	3
ASME B16.5 cl. 150	D	D	D	D	D	D	D	D	D	D	D
AS 2129 D	T	-	T	T	T	T	T	T	-	T	-
AS 2129 E	U	-	U	U	U	U	U	U	-	U	-
JIS 10 K	G	G	G	G	G	G	G	G	-	G	-
BS 10 D	H	-	H	H	H	H	H	H	-	H	-
BS 10 E	S	-	S	S	S	S	S	S	-	S	-

* drilled, with 4 threaded holes

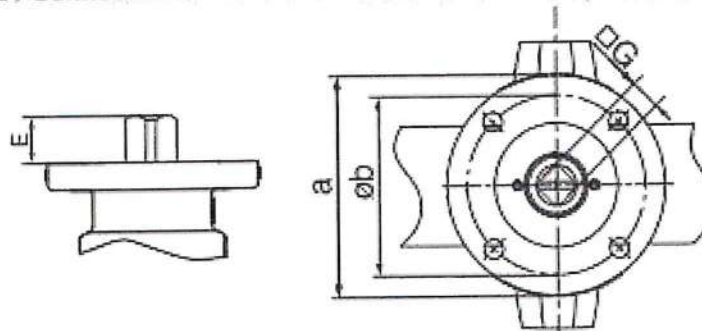
Flanges	U section (code)			
	400	450	500	600
DIN EN1092 PN06	1*	1*	1*	1*
DIN EN1092 PN10	2	2	2	2
DIN EN1092 PN16	3	3	3	3
ASME B16.5 cl. 150	D	D	D	D
AS 2129 E	-	U	-	-
BS 10 D	-	-	-	H
BS 10 E	-	S	-	-

* only available with threaded holes

Sectional view



12 Order data / Connection dimensions - GEMÜ 480 butterfly valve with bare shaft [inch]

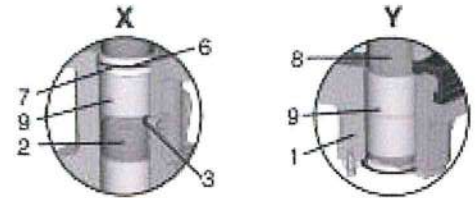
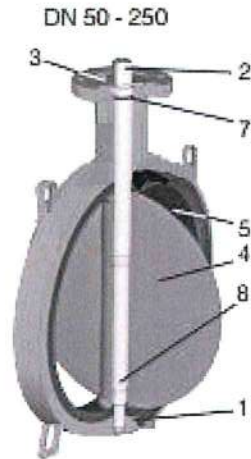


12 Operator flange

DN	ISO	Øb	Shaft connection	□G		E		Code
				PS10 / PS16	PS3	PS10 / PS16	PS3	
25	F05	1.97	D	0.35	-	0.75	-	05 D09
40	F05	1.97	D	0.35	-	0.75	-	05 D09
50	F05	1.97	D	0.35	-	0.75	-	05 D09
65	F06	1.97	D	0.43	-	0.75	-	05 D11
80	F05	1.97	D	0.43	-	0.75	-	05 D11
100	F05	1.97	D	0.55	-	0.75	-	05 D14
125	F07	2.76	D	0.67	-	0.98	-	07 D17
150	F07	2.76	D	0.67	-	0.98	-	07 D17
200	F10	4.02	D	0.87	0.67	1.26	0.98	10 D22
250	F10	4.02	D	0.87	0.67	1.26	0.98	10 D22
300	F10	4.02	D	0.87	0.67	1.26	0.98	10 D22
350	F12	4.92	D	1.06	0.87	1.10	1.10	12 D27
400	F14	5.51	D	1.42	1.06	1.46	1.10	14 D36
450	F14	5.51	D	1.42	1.06	1.46	1.10	14 D36
500	F14	5.51	D	1.42	1.06	1.46	1.10	14 D36
600	F16	6.50	D	1.81	1.42	1.85	1.46	16 D46

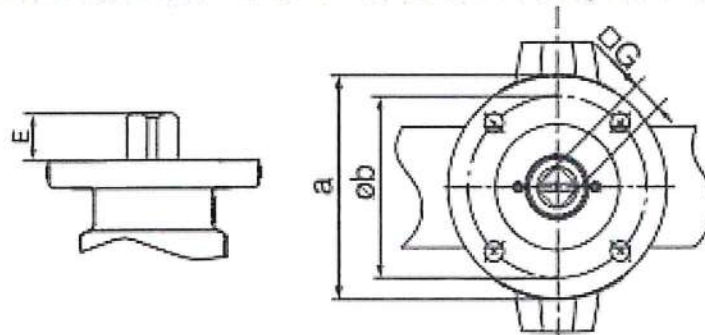
Order example	1	2	3	4	5	6	7	8	9	10	11	12	13
Code	480	Order data butterfly valve (page 4)									F	07 D17	

Sectional view



Item	Designation		
	DN 25/40	DN 50 - 250	DN 300 - 600
1		Body	
2		Shaft with position indicator	
3		Shaft lock	
4		Disc	
5		Seat (liner)	
6	-	-	Support ring (from DN 350)
7		External shaft seal	
8	Axis	-	Axis
9	-	-	Bearing

12 Order data / Connection dimensions - GEMÜ 480 butterfly valve with bare shaft [inch]



12 Operator flange

DN	ISO	Øb	Shaft connection	□G		E		Code
				PS10 / PS16	PS3	PS10 / PS16	PS3	
25	F05	1.97	D	0.35	-	0.75	-	05 D09
40	F05	1.97	D	0.35	-	0.75	-	05 D09
50	F05	1.97	D	0.35	-	0.75	-	05 D09
65	F05	1.97	D	0.43	-	0.75	-	05 D11
80	F05	1.97	D	0.43	-	0.75	-	05 D11
100	F06	1.97	D	0.55	-	0.75	-	05 D14
125	F07	2.76	D	0.67	-	0.98	-	07 D17
150	F07	2.76	D	0.67	-	0.98	-	07 D17
200	F10	4.02	D	0.87	0.67	1.26	0.98	10 D22
250	F10	4.02	D	0.87	0.67	1.26	0.98	10 D22
300	F10	4.02	D	0.87	0.67	1.26	0.98	10 D22
350	F12	4.92	D	1.06	0.87	1.10	1.10	12 D27
400	F14	5.51	D	1.42	1.06	1.46	1.10	14 D36
450	F14	5.51	D	1.42	1.06	1.46	1.10	14 D36
500	F14	5.51	D	1.42	1.06	1.46	1.10	14 D36
600	F16	6.50	D	1.81	1.42	1.85	1.46	16 D46

Order example	1	2	3	4	5	6	7	8	9	10	11	12	13
Code	480	Order data butterfly valve (page 4)							F	07 D17			

GOMINE HERMETIZUESE E SEDIES SE VALVULES DN50, MODEL 480

SASIA TOTALE 10 (dhjetë) Cope

VENDI I PERDORIMIT **SI PJESE KEMBIMI (ARTIKULL KONSUMI), PER :**
VALVULEN DN50 , PN10, MODEL 480,

TE PAISJES

E – V E SHPËLARJES - AUTOMATIKE TE FILTRIT “HYDAC”

TE DHENA TEKNIKE :

Materiali i gominës hermetizuese të sedies së valvules **Viton, FPM (FKM)**

Kodi i artikullit **V**

Mënyra e vendosjes **Lehtësisht-me dorë**

Kodi i ngjyrës **I verdhë**



Pamje e struktures së gominës hermetizuese te valvules DN50 (Model R480)

(e cila është prodhuar për tu montuar në rast nevojë gjatë shërbimeve të mirëmbajtjes).

MEKANIZMI RROTULLUES I KRAHUT SHPËLARËS TE FILTRIT - "HYDAC"
(GRUPI "MOTOR - REDUKTOR")

VENDI I MONTIMIT FILTRI KRYESOR I UJIT FTOHES TE AGREGATIT - "HYDAC"

TIPI I FILTRIT RF3 - 2.5 - EU1 - N - 5 1 - 1 - 2 / KS 1000 - 2.5 - 2409466

MANOVRIMI & KONTROLLI ME ANE TE MOTORIT ELEKTRIK (EU)
 ®

MODELI I FILTRIT **AutoFilt RF3** (Back-flushing filters)

Max. operating pressure 16 bar

Max. operating temperature ... 90 °C

Capacity 190 lit

Operating weight 700 kg

Operating voltage 400 V

Power requirment 0,3 kW

Year of manufacturing 2015

Kodi i artikullit 1360804

Numri Serial CF - 46595



Foto e targetit të Filtrit "HYDAC"

TE DHENAT TEKNIKE

Motori :

- TIPI SK 63S/4 OL/HMS
- MOTORI ELEKTRIK 3 FAZOR
- FUQIA E MOTORIT 0,06 kW
- FREKUENCA 50 Hz
- TENSIONI 230 / 400 V Δ/Y
- RRYMA 0,41 / 0,24 A
- FAKTORI I FUQISE $\cos \varphi$ 0,69
- NUMRI I RROTULLIMEVE 1385 rrot/min
- STANDARTI IEC 60034
- KLASI I IZOL. PER TEMP. 155 (F)
- KLASI I IZOL. PER LAGESHTI.... IP 55



Foto e targetit të motorit te mekanizmit rrotullues te krahut shpëlarës te Filtrit "HYDAC"

TE DHENAT TEKNIKE

Reduktori :

- TIPI (MODEL) SK 1SIS40/H10F-IECC63-63S/4 OL/H MS
- SERIA SI
- MOMENTI RROTULLUES (M_2) 85 Nm
- FUQIA 0,060 kW
- NUMRI I RROTULLIMEVE (n_2)..... -1
- PESHA 2,3 min
- PESHA 8,3 kg

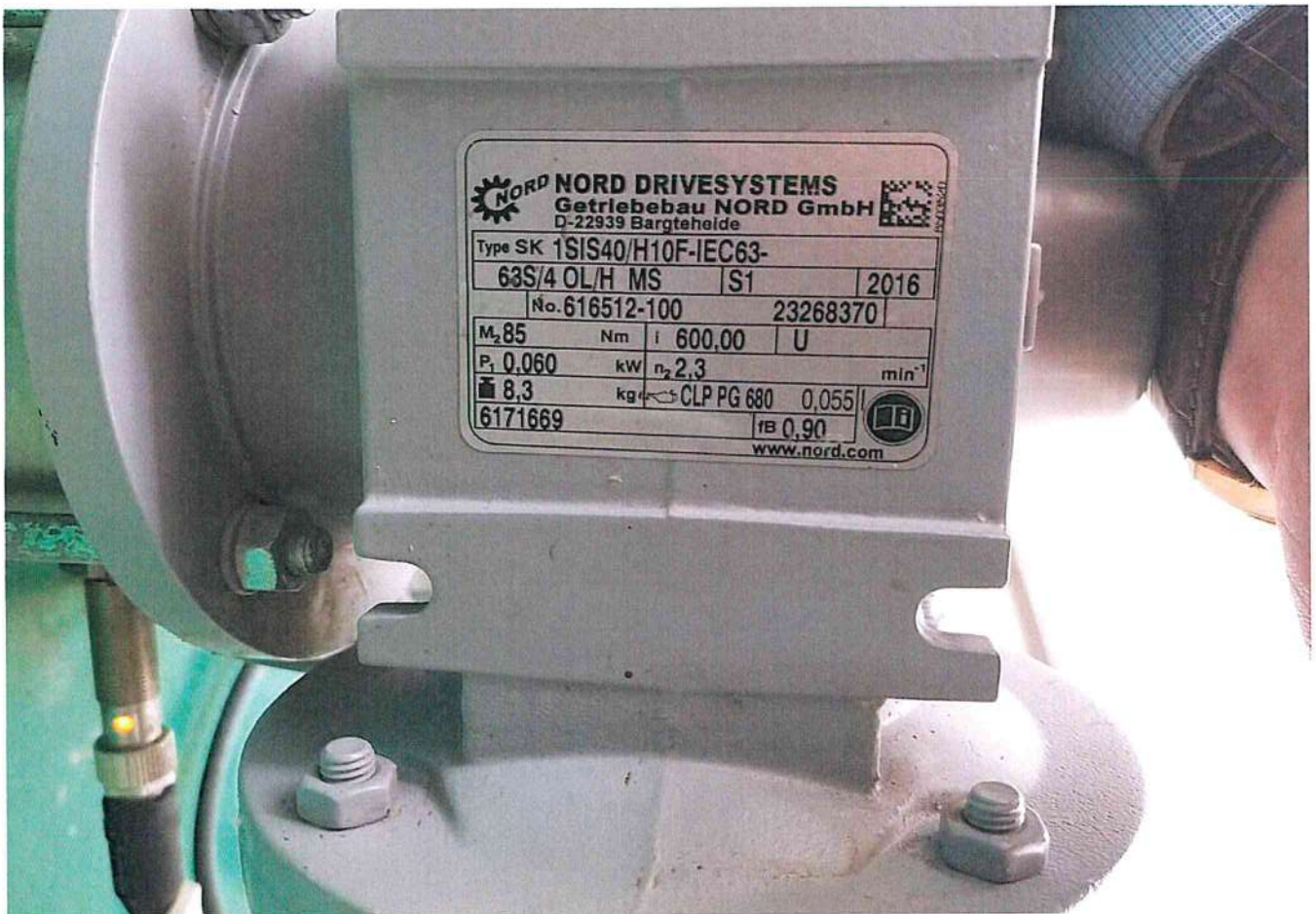


Foto e targetit te reduktorit te mekanizmit rrotullues te krahut shpëlarës te Filtrit "HYDAC"

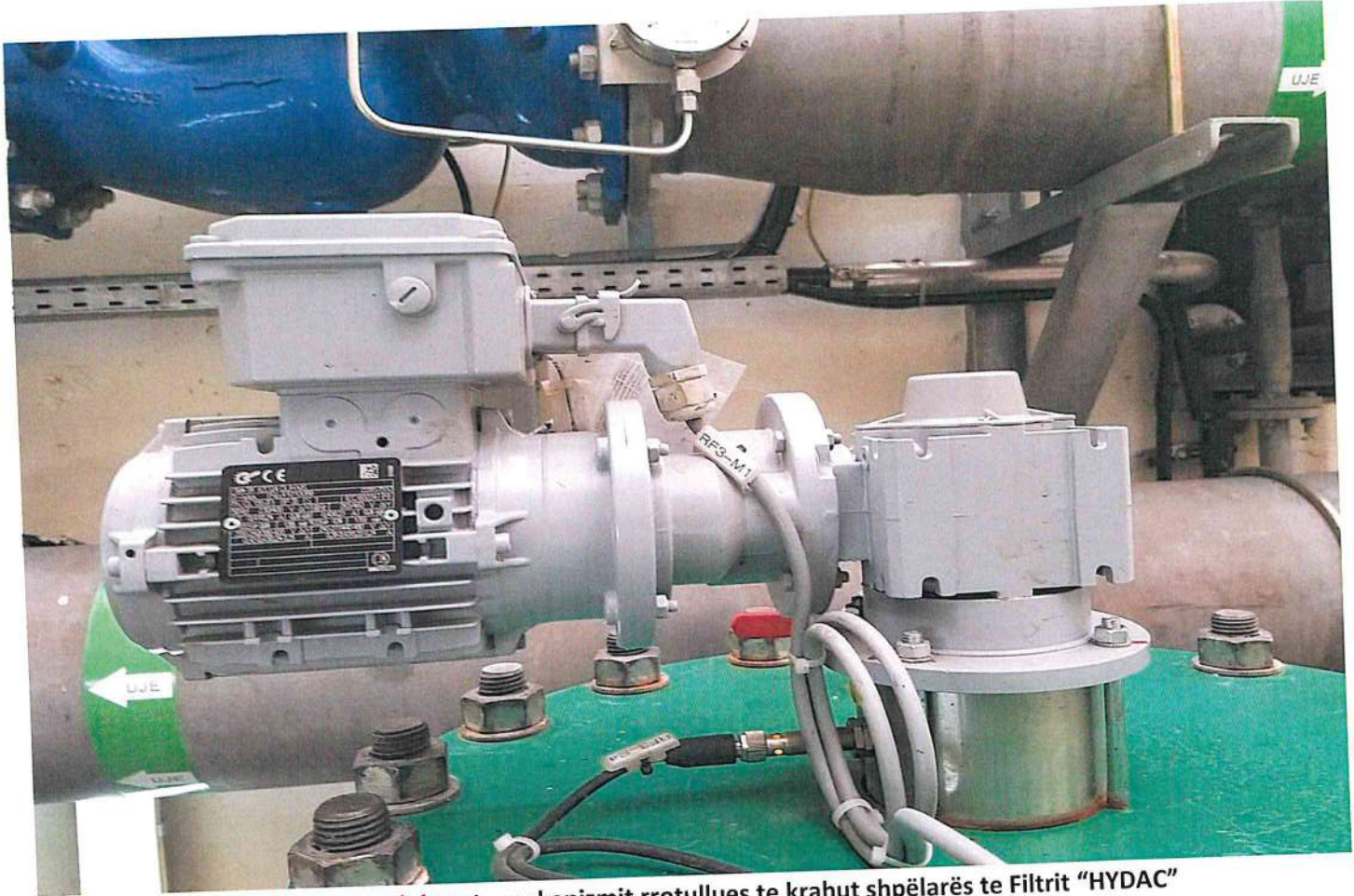


Foto e grupit motor-reduktor te mekanizmit rrotullues te krahut shpëlarës te Filtrit "HYDAC"



Foto e pjesës së pasme të reduktorit te mekanizmit rrotullues te krahut shpëlarës te Filtrit "HYDAC"

Mekanizmi rrotullues i krahut shpëlarës te Filtrit 'HYDAC'



Foto me pamje ballore të Filtrit "HYDAC"

Mekanizmi rrotullues i krahut shpëlarës te Filtrit 'HYDAC'



Foto me pamje në profil e Filtrit "HYDAC"

VALVULA E REDUKTIMIT TE PRESIONIT TE AJRIT 0 ÷ 15 bar, PER SISTEMIN E FRENIMIT TE AGREGATIT

TE DHENAT TEKNIKE

VENDI I MONTIMIT	PANELI I FRENIMIT TE AGREGATIT
PERDORIMI	RREGULLON PRESIONIT E AJRIT (7,5 ÷ 8 bar) NE HYRJE TE DISTRIBUTORIT KRYESOR
PRESIONI NE HYRJE TE PAISJES	15 bar
PRESIONI I PUNES	0 – 12 bar (rregullohet në vend në 7,5 ÷ 8 bar)
FILETI NE HYRJEN E PAISJES	1/2 ”
DALJET E AJRIT	ME 2(dy) DALJE ANESORE (dhe valvulat e tyre)
TIPI/MENYRA E BASHKIMIT TE DALJEVE.....	UNIVERSALE
E PAISUR ME MANOMETER, ME :	
- Diameter Dj.	Ø 50 mm
- Diapazon matjeje	0 ÷ 16 bar
MENYRA E MONTIMIT	JO NE MUR, (POR NE LINJEN E INSTALUAR NE PANELIN E FRENIMIT TE AGREGATIT)
DISTANCA E AKSIT TE PAISJES NGA PANELI	57 mm

PAMJE E PERGJITHSHME E VALVULES SE REDUKTIMIT TE PRESIONIT 0 ÷ 15 bar, 1/2 ”



PAMJE E PAISJES NE VENDMONTIMIN E SAJ NE PANELIN E FRENIMIT TE AGREGATIT

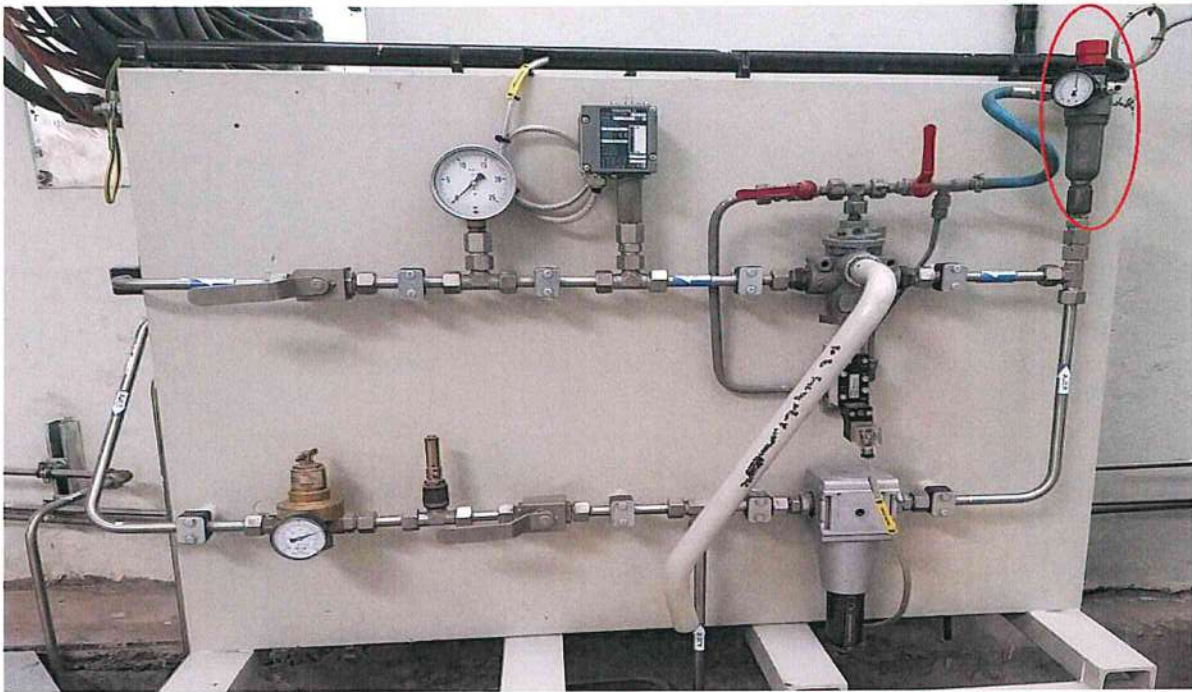


Foto - Pamje e panelit te frenimit te agregatit, ku eshte montuar edhe valvula e reduktimit te presionit

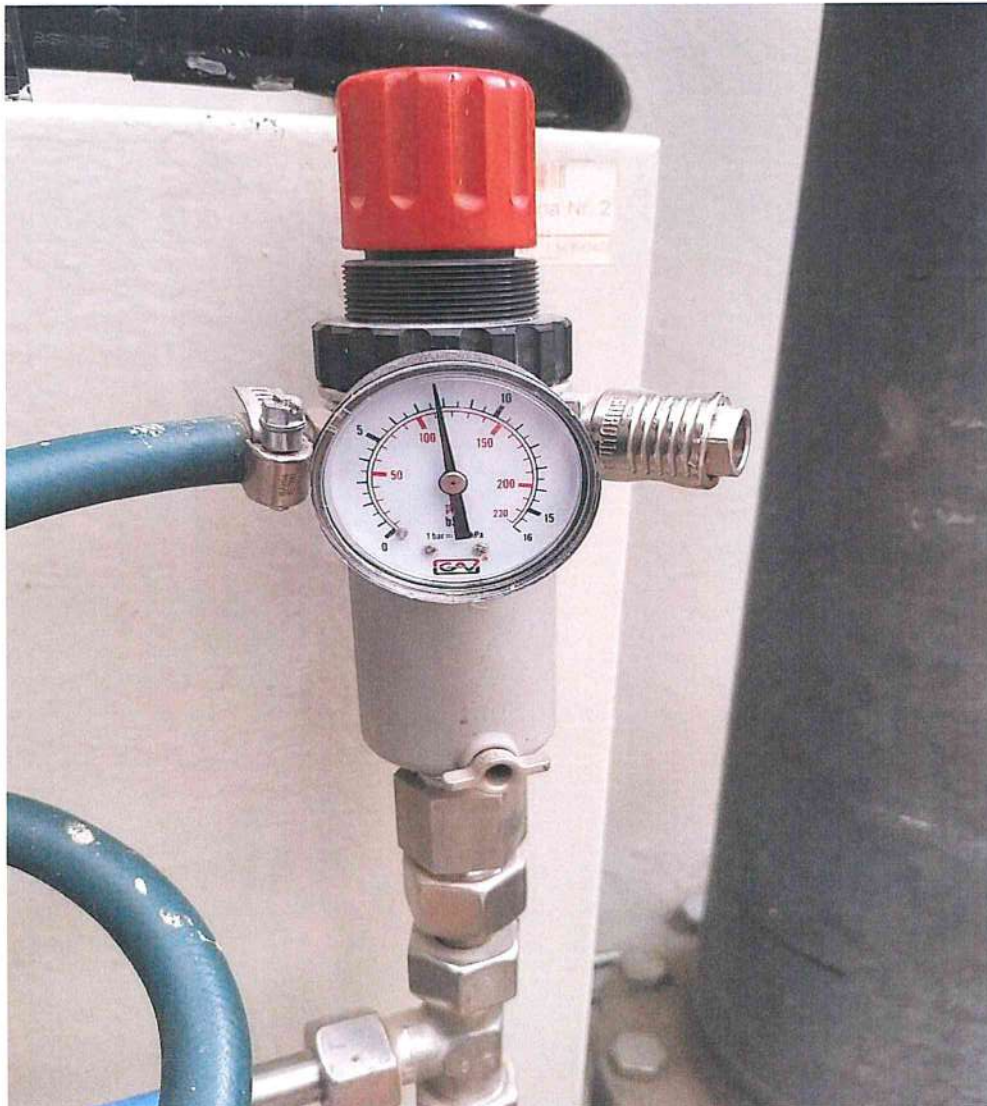


Foto - Pamje e valvules se reduktimit te presionit ne vend-montim

REDUKTOR – PRESIONI AJRI 1 ÷ 15 bar, MODEL R 120 PER SISTEMIN E FRENIMIT TE AGREGATIT

TE DHENAT TEKNIKE

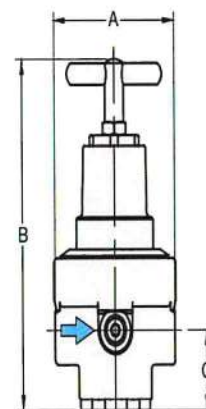
VENDI I MONTIMIT	PANELI I FRENIMIT TE AGREGATIT
TIPI I REDUKTORIT	R 120-04 E
FLUIDI QE PERDORET	AJER I KOMPRIMUAR (NGA SIST. AJRIT KOMP.)
PERDORIMI	PER FRENIMIN E RROTORIT TE AGREGATIT
PRESIONI I AJRIT NE HYRJE	Max. 50 bar
DIAPAZONI I REDUKTIMIT	1 ÷ 15 bar
PRESIONI I REDUKTUAR I AJRIT.....	15 bar (PAS RREGJISTRIMIT)
RREGULLIMI (RREGJISTRIMI)	ME ANE TE DOREZES NE FORME “T-je”
TEMPERATURA E OPERIMIT	- 20 °C ÷ +80°C
MATERIALI I :	
-TRUPIT TE REDUKTORIT,	BRASS
-FOLESE SE SUSTES,	BRASS
-VALVULES SE BRENDESHME... ..	BRASS
-O’RING	FKM
FILETI I MONTIMIT TE PAISJES	G½
E PAISUR ME MANOMETER	0 ÷ 20 bar (300 psi) (G ¼)

Dimensions		Regul. system	K _v -	Flow	Connection	Supply	Pressure	Order
A	B	C	D: diaphragm	rate	thread	max.	range	number
mm	mm	mm	P: piston	(m ³ /h)	G	bar	bar	

Brass pressure regulator		for compressed air, supply pressure max. 30 / 50 bar, relieving, without pressure gauge				R120				
64	143	34	D	0.35	8	130	G¼	30	0.1...1.5	R120-02A
					10	160			0.2...3.0	R120-02B
					15	250			0.5...8.0	R120-02C
					20	330		50	1...15	R120-02E
			P		25	420			2...30	R120-02F
					30	500			3...50	R120-02G
78	158	37	D	1.0	20	330	G½	30	0.1...1.5	R120-04A
					22	360			0.2...3.0	R120-04B
					30	500			0.5...8.0	R120-04C
					45	750		50	1...15	R120-04E
			P		75	1250			2...30	R120-04F
					90	1500			3...50	R120-04G



R120-04E
accessory: gauge



R120-04

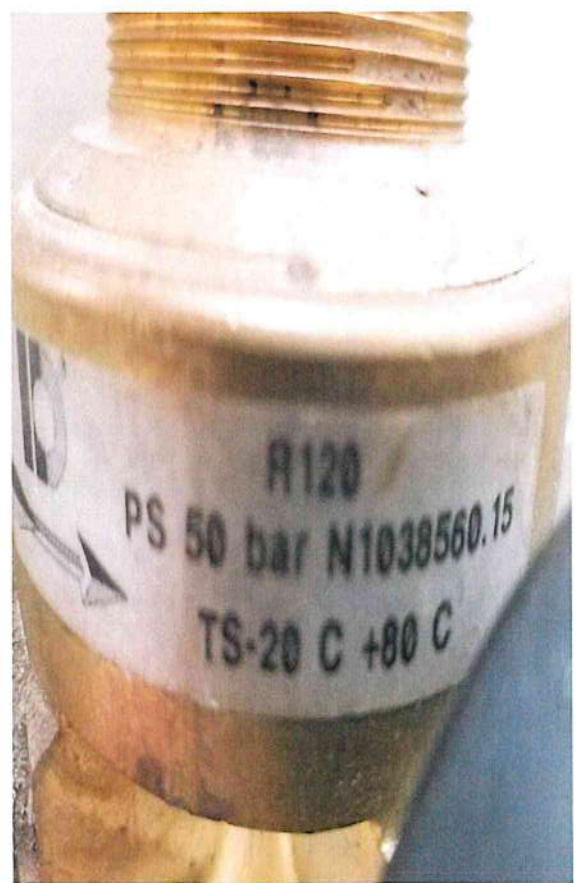
DISA TE DHENA TEKNIKE NGA KATALOGU I KESAJ PAISJEJE

PERMASAT GABARITE

DISA FOTO ILUSTRUESE TE REDUKTORIT TE PRESIONIT TE AJRIT



PAMJE TE REDUKTORIT PRESIONIT NE VEND-MONTIM (TEK PANELI I FRENIMIT)



PAMJE TE MBISHKRIMEVE TE VENDOSURA NE TRUPIN E REDUKTORIT TE PRESIONIT

VALVUL E REDUKTIMIT TE PRESIONIT TE UJIT

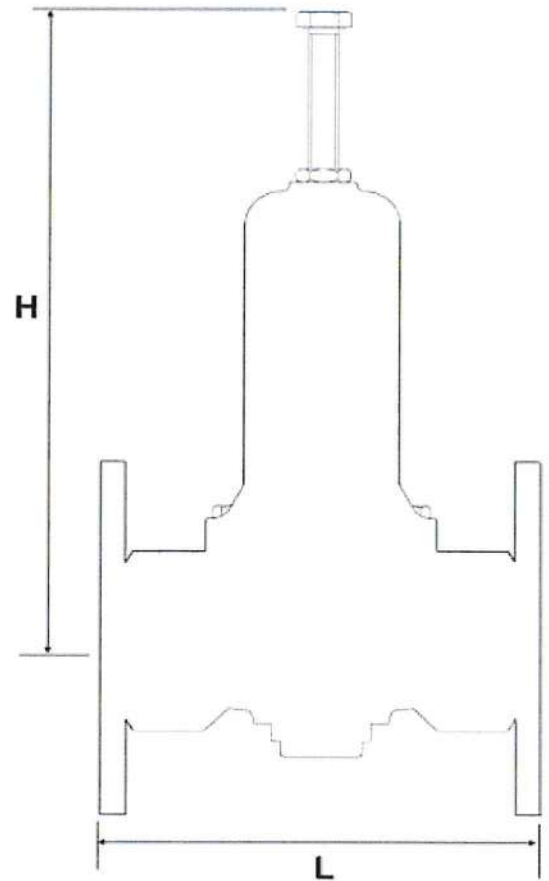
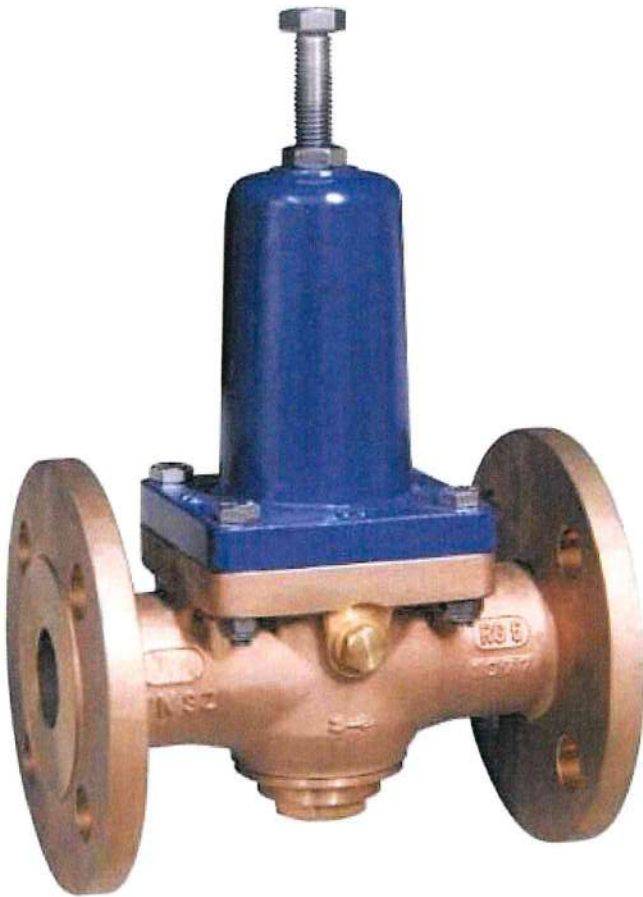
DN50, $P_{red} = 1.5 \div 6$ bar,

TE DHENAT TEKNIKE

VENDI I MONTIMIT	LINJA E UJIT FTOHES TE HERMETIZUESIT TE BOSHTIT TE TURBINES
FLUIDI QE PERDORET	UJE NGA LIQENI
PERDORIMI	REDUKTON PRESIONIN E UJIT FTOHES (NE HYRJE TE NYJES SE HERMETIZUESIT)
DIAMETRI NOMINAL (DN)	DN50
PRESIONI MAX. NE HYRJE TE PAISJES	16 bar
DIAPAZONI I REDUKTIMIT TE PRESIONIT (NE DALJE TE PAISJES)	$1.5 \div 6$ bar
PRESIONI I PUNES	$3.6 \div 4$ bar
SASIA E KALIMIT TE UJIT FTOHES	$13 \text{ m}^3/\text{h}$
POZICIONI I INSTALIMIT	NE ÇFAREDO LLOJ POZICIONI
PRESIONI DIFERENCIAL MIN.	≈ 1 bar
DIAPAZONI I TEMPERATURES	$0^\circ\text{C} \div 75^\circ\text{C}$
MATERIALI I TRUPIT TE VALVULES	BRONZ
MATERIALI I KAPAKUT TE SUSTES	GIZE
DIAFRAGMA & GOMINAT	NBR

FORMA KONSTRUKTIVE DHE PERMASAT GABARITE

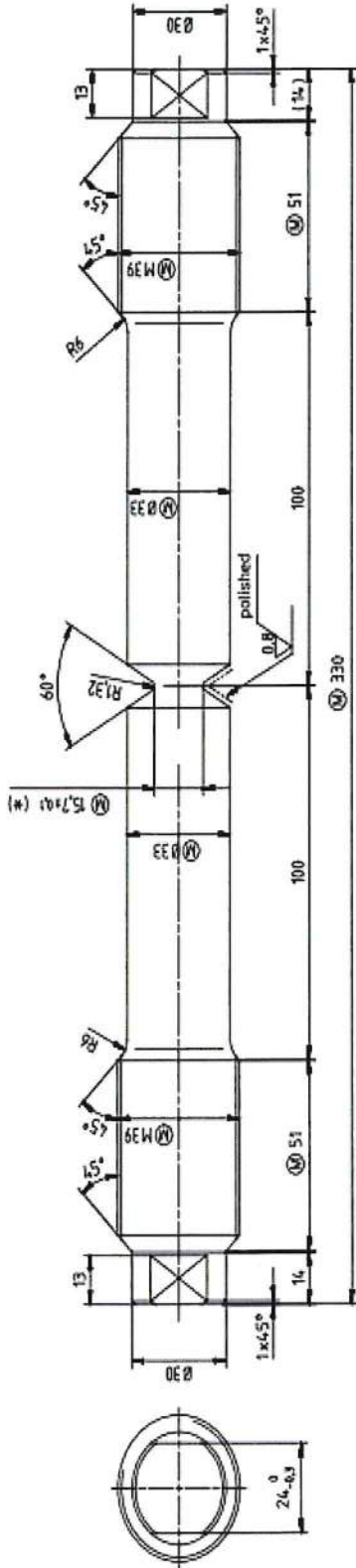
E VALVULES SE REDUKTIMIT TE PRESIONIT DN50, P_{red} = 1.5 ÷6 bar



DN	32	40	50	65	80	100	125
L	180	200	230	290	310	350	400
H	160	160	160	178	315	315	440
Kv (m ³ /h)	6	9	13	17	60	70	170
Weight Kg	5.5	8.5	11	18	39	40	90

BULONI I SIGURISE (PER LOPATAT E APARATIT DREJTUES)

VENDI I PERDORIMIT APARATI DREJTUES I TURBINES
 VIZATIMI NE PROJEKT KOM - 1MEA - 11 - 2419
 REFERENCA E ARTIKULLIT HV5 - 510.2419

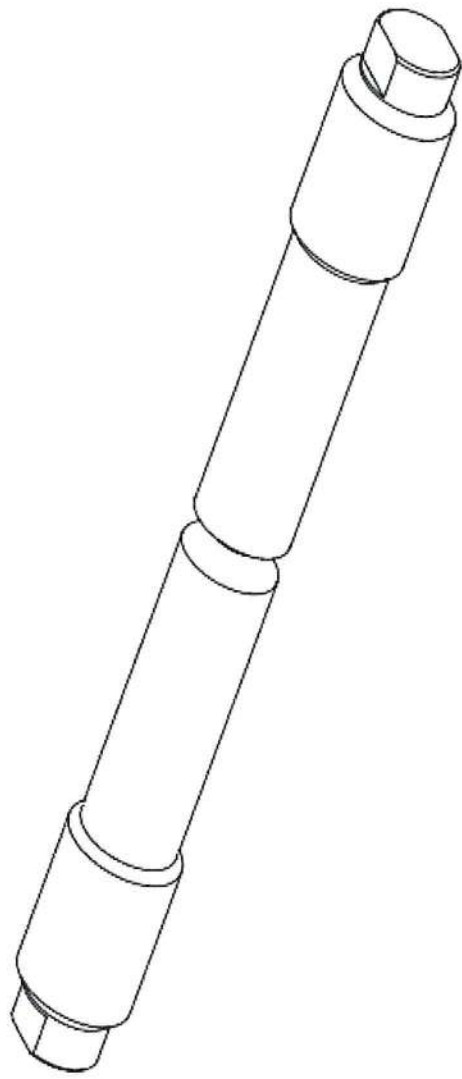


(*) THIS VALUE ARE NOT DEFINED FOR THE MOMENT. WE ARE WAITING FOR THE FINAL CALCULATION OF THE DISTRIBUTION

4.2CrMo4+QT	
Re (N/mm ²)	750
Rm (N/mm ²)	1000-1200
A (%)	11
Z (%)	45
KV (J)	35
(-20°C)	

MATERIAL CERTIFICATE ACC TO EN 10045-2 INCL. CHEMICAL ANALYSIS, TENSILE AND YIELD STRENGTH TEST ACC TO EN 10002-2
 THE QA DOCUMENTATION MUST BE PRODUCED ACC TO "QA DOCUMENTATION REQUIREMENTS" FOR EN 10002-2
 100% UT TESTING OF BARS ACC TO EN 10208 D1.4
 PREPARING THICKNESS TO METRIC
 ALL TRACTION AXLE HAVE TO BE MANUFACTURED WITH THE SAME BAR SUPPLY OF 3 ADDITIONAL PIECES FOR TEST
 TRACTION AXLE TEST ON THESE 3 PIECES, FORCE: 300kN (*)
 COMMUNICATION OF RESULTS TO ANDRITZ HYDRO 8 REAL BOTTOM OF THIS AND EFFORT TO BREAK
 FINAL MACHINING AFTER ANDRITZ HYDRO APPROVAL

30/11/19 CHAMFER 0.2.0.4x45°



Scale: 1:1

Weight: 2.4 kg

Material: 4.2CrMo4+QT

Surface: polished

Reference: HV5-510.2419

Customer: KOM-1MEA-11-24-19

TRACTION AXLE BIS
 AXE DE TRACTION BIS

Order No.	Part No.	Part Name	Material	Quantity	Unit	Weight (kg)	Volume (cm ³)
1	1	Bolt	4.2CrMo4+QT	1	pc	2.4	100

**ELEKTRO- VALVOLA 001 VE
VALVULA "FARFALLE" ME AKTUATOR ELEKTRIK**



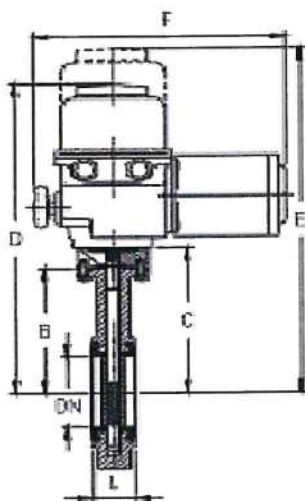
Pamje e Elektro-Valvules 001VE ne vend-montimin e saj

TE DHENAT TEKNIKE

TE VALVULES TIP "FARFALLE" TE PAISJES ELEKTRO-VALVULE 001VE

VENDI I MONTIMIT SISTEMI I UJIT FTOHES TE AGREGATIT
TIPI I VALVULES ME FARFALLE (QE RROTULLOHET RRETH AKSIT TE SAJ)
MANOVRIMI ME AKTUATOR ELEKTRIK
MODELI I VALVULES 1234 EOA-350
DIAMETRI I TUBACIONIT..... Ø350 mm (ose 14")
PRESIONI MAX. 16 BAR
NUMRI I ARTIKULLIT NVSOD1234EOA-350
MODELI I AKTUATORIT AS 80
PERMASAT KRYESORE SI NE SKICEN E MEPOSHTME

TTV BUTTERFLY VALVE FIG. 1234 EOA-350 With electric actuator



DIMENSION : (in:mm)

DN	Ø	OA/ASH	L	B	C	D	E	F	Kg
40	1 1/2"	OA-3	33	140	174	398	494	264	8,3
50	2"	OA-3	43	158	190	414	510	264	9,8
65	2 1/2"	OA-3	46	162	196	420	516	264	10,8
80	3"	OA-3	46	165	199	423	519	264	11,3
100	4"	OA-6	52	185	219	443	539	376	12,8
125	5"	OA-8	58	207	235	459	555	376	15,3
150	6"	OA-15	58	216	244	468	564	376	16,3
200	8"	AS-25	60	256	280	457	457	479	33,3
250	10"	AS-50	68	248	272	449	449	509	38,8
300	12"	AS-50	78	280	304	481	481	509	47,3
350	14"	AS-80	78	300	380	588	588	509	58,5
400	16"	AS-200	102	330	410	618	618	564	71,5

SODECO

www.sodeco-valves.com
www.sodecovalves.eu
www.inoxline.com

1234EOA-350

TE DHENAT TEKNIKE

TE AKTUATORIT ELEKTRIKE TE PAISJES ELEKTRO-VALVULE 001VE

VENDI I MONTIMIT SISTEMI I UJIT FTOHES TE AGREGATIT
MANOVRIMI ME MOTOR ELEKTRIK
MODELI I AKTUATORIT AS 80

Motori :

- MOTORI ELEKTRIK 3 FAZOR
- FUQIA E MOTORIT 0,06 KW
- TENSIONI 400 V
- RRYMA 0,3 A
- FREKUENCA 50 Hz
- KLAS. I PUNES SE MOTORIT..... 30%

Aktuatori :

- MOMENTI RROTULLUES 800 Nm
- NUMRI I RROTULLIMEVE 0,5 rrot/min
- MAKSIMUMI I RROTULLIMIT 0,25 rrotullime (ose 1/4 rrotullim)

Models AS18 to AS80&BS100

- Compact direct quarter turn actuators for the torque range 150 to 800 N.m



Pamje e modelit te Aktuatorit qe perfshihet ne grupin e Aktuatoreve AS18÷AS80 & BS100

TE DHENAT TEKNIKE TE TARGETIT

TE AKTUATORIT ELEKTRIK TE PAISJES ELEKTRO-VALVULE 001VE

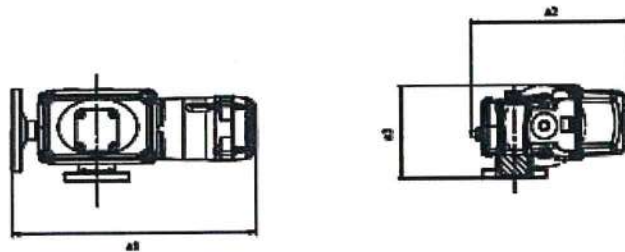


Foto e targetit te Aktuatorit elektrik AS80

Dimensions

AS18 to AS80 and BS Models

Standard version



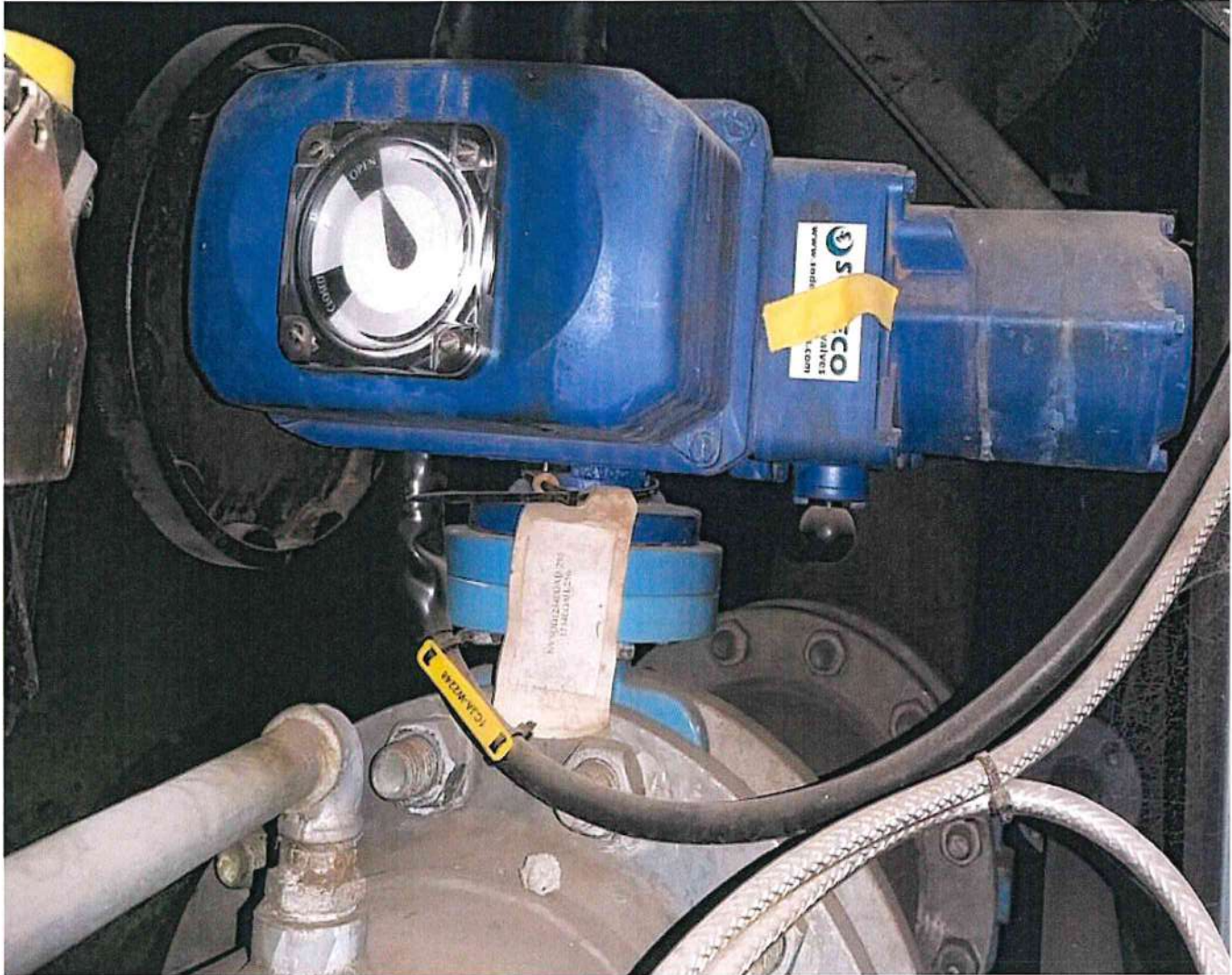
	Flange	Stem size (mm)		a1 max.	a2	a3	Approx. Weight (kg)
		Bore (max.)	Square (max.)				
AS18	F07/F10	30	22	538	313	180	18
AS25	F07/F10	30	22	538	313	180	18
ASP	F07/F10	30	22	518	313	180	15
AS50	F07/F10	32	27	587	313	180	20
AS80	F12	40	36	587	313	211	21
BS100	F12	40	36	643	424	167	30

FOTO TE TJERA TE PAISJES SE ELEKTRO - VALVULES 001VE

ME AKTUATOR ELEKTRIK MODEL AS 80



ELEKTRO - VALVOLA 002 VE
VALVULA "FARFALLE" ME AKTUATOR ELEKTRIK



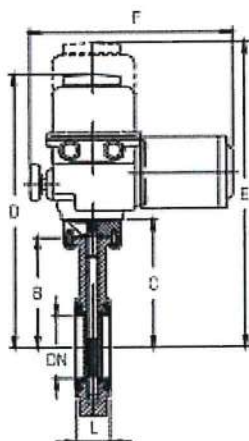
Pamje e Elektro-Valvules 002VE ne vend-montimin e saj

TE DHENAT TEKNIKE

TE VALVULES TIP "FARFALLE" TE PAISJES ELEKTRO-VALVULE 002VE

VENDI I MONTIMIT SISTEMI I UJIT FTOHES TE AGREGATIT
TIPI I VALVULES ME FARFALLE (QE RROTULLOHET RRETH AKSIT TE SAJ)
MANOVRIMI ME AKTUATOR ELEKTRIK
MODELI I VALVULES 1234 EOA-250
DIAMETRI I TUBACIONIT..... Ø250 mm (ose 10")
PRESIONI MAX. 16 BAR
NUMRI I ARTIKULLIT NVSOD1234EOA-250
MODELI I AKTUATORIT AS 50
PERMASAT KRYESORE SI NE SKICEN E MEPOSHTME

TTV BUTTERFLY VALVE FIG. 1234 EOA-250
With electric actuator



DIMENSION : (In mm)

DN	Ø	OAH/ ASH	L	B	C	D	E	F	Kg
40	1 1/2"	OA-3	33	140	174	398	454	264	8,3
50	2"	OA-3	43	156	190	414	510	264	9,8
65	2 1/2"	OA-3	46	162	196	420	516	264	10,8
80	3"	OA-3	46	165	199	423	519	264	11,3
100	4"	OA-6	52	185	219	443	539	376	12,8
125	5"	OA-8	56	207	235	459	555	376	15,3
150	6"	OA-15	56	216	244	468	564	376	16,3
200	8"	AS-25	60	256	280	457	457	479	33,3
250	10"	AS-50	68	248	272	449	449	509	38,8
300	12"	AS-50	78	280	304	481	481	509	47,3
350	14"	AS-80	78	300	380	588	588	509	58,5
400	16"	AS-200	102	330	410	618	618	564	71,5

SODECO

www.sodeco-valves.com
www.sodecovalves.eu
www.inoxline.com

1234EOA-250

TE DHENAT TEKNIKE

TE AKTUATORIT ELEKTRIKE TE PAISJES ELEKTRO-VALVULE 002VE

VENDI I MONTIMIT SISTEMI I UJIT FTOHES TE AGREGATIT
MANOVRIMI ME MOTOR ELEKTRIK
MODELI I AKTUATORIT AS 50

Motori :

- MOTORI ELEKTRIK 3 FAZOR
- FUQIA E MOTORIT 0,06 KW
- TENSIONI 400 V
- RRYMA 0,3 A
- FREKUENCA 50 Hz
- KLAS. I PUNES SE MOTORIT..... 30%

Aktuatori :

- MOMENTI RROTULLUES 600 Nm
- NUNRI I RROTULLIMEVE 0,5 rrot/min
- MAKSIMUMI I RROTULLIMIT 0,25 rrotullime (ose 1/4 rrotullim)

Models AS18 to AS80&BS100

- Compact direct quarter turn actuators for the torque range 150 to 800 N.m



Pamje e modelit te Aktuatorit qe perfshihet ne grupin e Aktuatoreve AS18÷AS80 & BS100

TE DHENAT TEKNIKE TE TARGETIT

TE AKTUATORIT ELEKTRIK TE PAISJES ELEKTRO-VALVULE 002VE

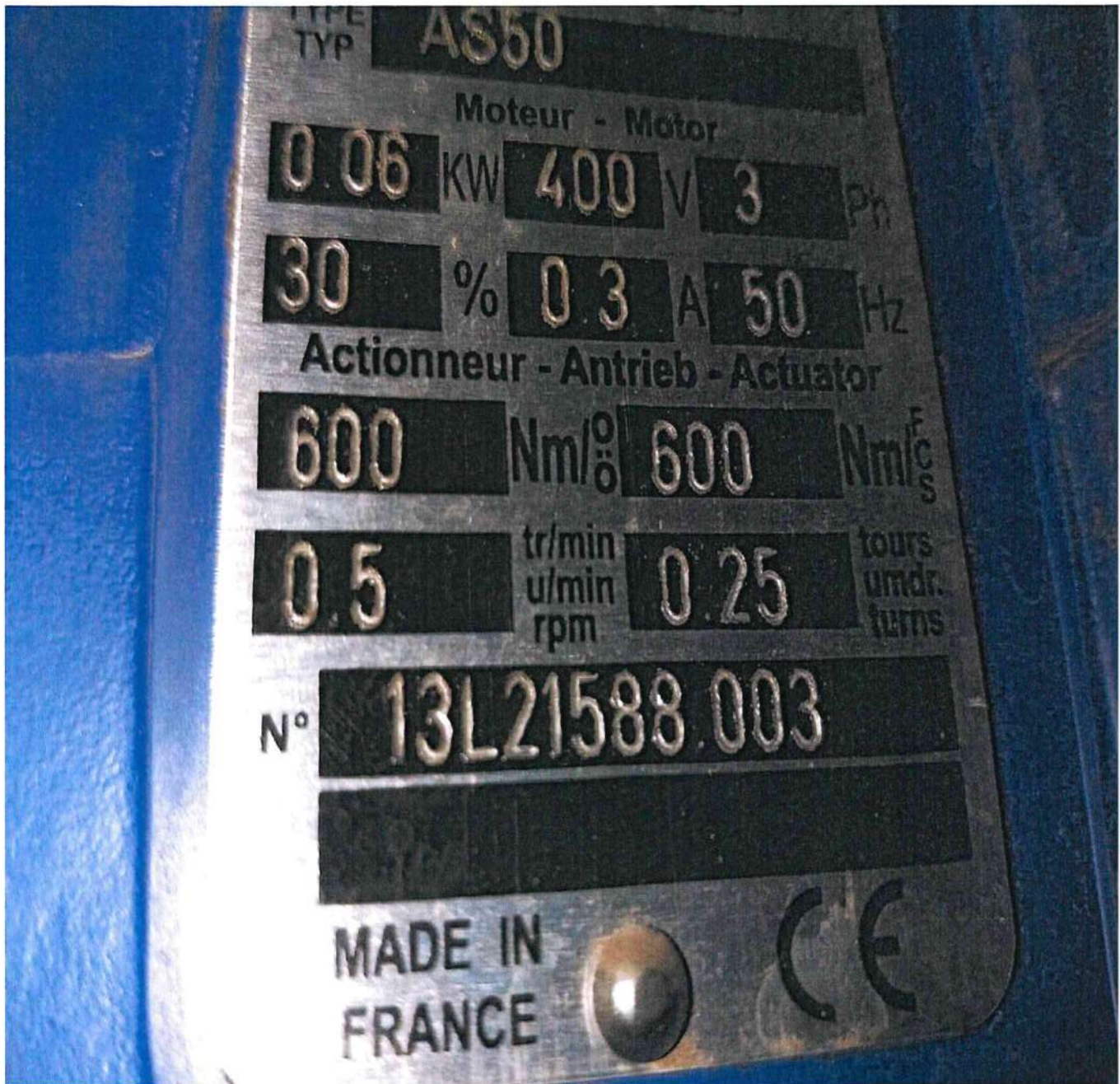
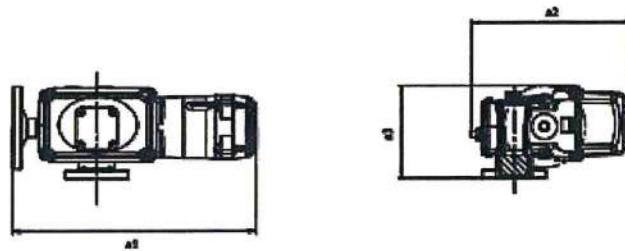


Foto e targetit te Aktuatorit elektrik AS50

Dimensions

AS18 to AS80 and BS Models

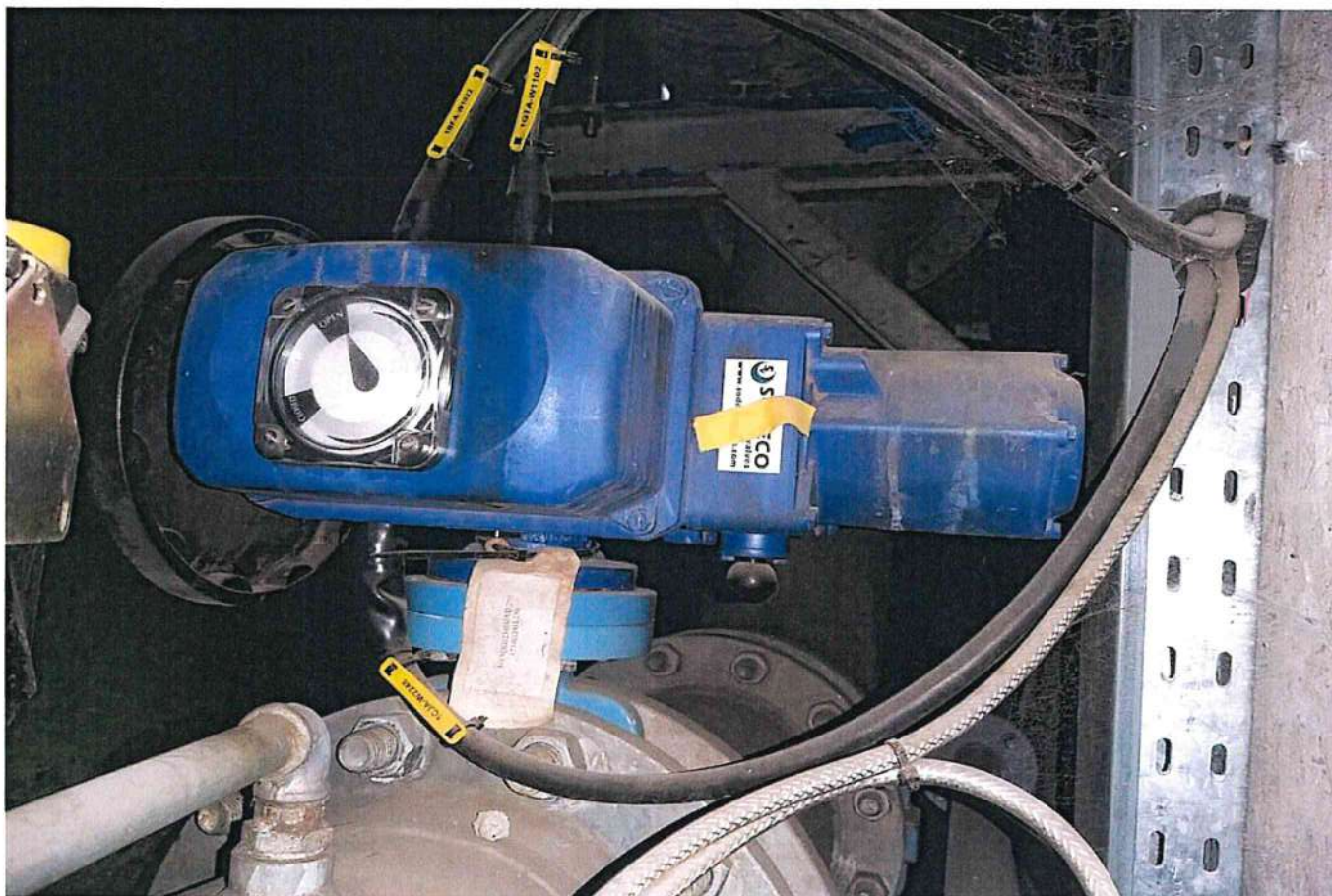
Standard version



	Flange	Stem size (mm)		a1 max.	a2	a3	Approx. Weight (kg)
		Bore (max.)	Square (max.)				
AS18	F07/F10	30	22	538	313	180	18
AS25	F07/F10	30	22	538	313	180	18
ASP	F07/F10	30	22	518	313	180	15
AS50	F07/F10	32	27	587	313	180	20
AS80	F12	40	36	587	313	211	21
BS100	F12	40	36	643	424	167	30

FOTO TE TJERA TE PAISJES SE ELEKTRO - VALVULES 002VE

ME AKTUATOR ELEKTRIK MODEL AS 50



RREGULLATORI I PRESIONIT TE UJIT (ME AKSESORET REZERVE TE TIJ)

PER MAGJISTRALIN E SISTEMIT TE UJIT FTOHES TE AGREGATIT

TE DHENAT TEKNIKE KRYESORE

VENDI I PERDORIMIT	: SISTEMI I UJIT FTOHES TE AGREGATIT
FLUIDI QE PERDORET	: UJE TEKNIK (NGA BASENI I LIQENIT)
MODELI I PAISJES	: MODEL DR300 250A
PRESIONI NOMINAL	: 16 BAR , <u>ose</u> 230 Psi - PRESIONI NE HYRJE (INLET) max. 16 BAR, - PRESIONI NE DALJE (OUTLET)..... 1 – 12 BAR, - PRESIONI I VENDOSUR PER TU VENDOSUR ($\approx 5 \div 6$ BAR)
ME VALVUL PILOTUESE	: MODEL CXPR
DIAMETRI NOMINAL	: DN250 , <u>ose</u> 10"
LLOJI I MONTIMIT	: ME FLANXHA (me 12 vrima ne te dyja flanaxhat)
SHPEJTESIA E LEVIZ. UJIT	: 1 m/s \div 2m/s
KONSUMI I UJIT	: $Q_{min.} = 342 \text{ m}^3/\text{h}$, dhe $Q_{max.} = 462 \text{ m}^3/\text{h}$
TEMPERATURA MAKS.	: max. 80°C

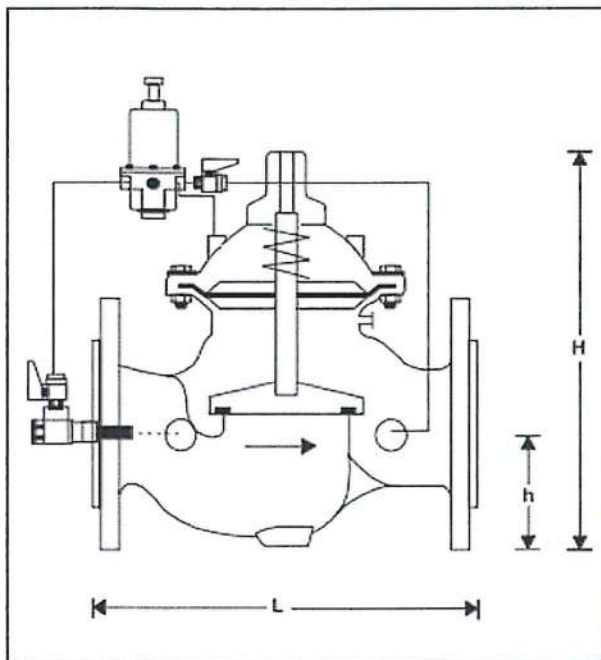


Fig. me sipër paraqet për ilustrim një pamje të përgjithshme të kësaj pajisjeje.

PERMASAT KRYESORE

DIAMETRI I FLANXHES BASHKUESE	: DN 250
PESHA	: 247 kg
PERMASA "L"	: 730 mm
PERMASA "H"	: 823 mm
PERMASA "h"	: 205 mm
NUMRI I VRIMAVE TE FLANXHAVE	: 12 vrima
DIAMETRI I VRIMES SE FLANXHAVE	: Ø 26 mm
TIPI I BULONAVE BASHKUES	: M24 (nga 12 Cope, ne te dyja anet)

DR300 Pressure regulator



DR300-... A = Flange PN 16, ISO 7005-2, EN 1092-2

Connection size

Connection size	DN	50	65	80	100	150	200	250	300	350	400	450
Weight	kg	14	15	24	39	82	159	247	407	512	824	947
Dimensions	mm											
	L	230	292	310	350	480	600	730	850	980	1100	1200
	H	235	294	400	433	558	650	730	944	990	1250	1250
	h	83	93	100	110	143	173	205	230	260	290	310
Flow rate (G _{max}) in m ³ /h - V=5.5 m/s		40	40	90	160	350	480	970	1400	1900	2500	3150
k _{v5} -value	m ³ /h	43	43	103	167	407	676	1160	1600	1600	3300	3300

**FOTO TE NDRYSHME TE PAISJES SE RREGULLATORIT TE PRESIONIT
NE VEND-MONTIMIN E SAJ**



Foto nga afer te paisjes se Rregullatorit te Presionit te ujit



Foto te Rregullatorit te Presionit te ujit ne vend-montimin perkates ne Sistemin e Ujit Ftohes te Agregatit



Foto te Kapakut te paisjes se Rregullatorit te Presionit te ujit



Foto te Targetit te paisjes se Rregullatorit te Presionit te ujit

AKSESORET REZERVE

PER

RREGULLATORIN E PRESIONIT TE UJIT DR300 250A

I. SET GOMINASH

PER SEDIEN E RREGULLATORIT DR300 250 A

KODI I KETIJ SETI PER DN250, ESHTË : 0903756

0903756



II. VALVUL PILOTUESE PER RREGULATORIN E PRESIONIT DR300 250A

MODELI CXPR

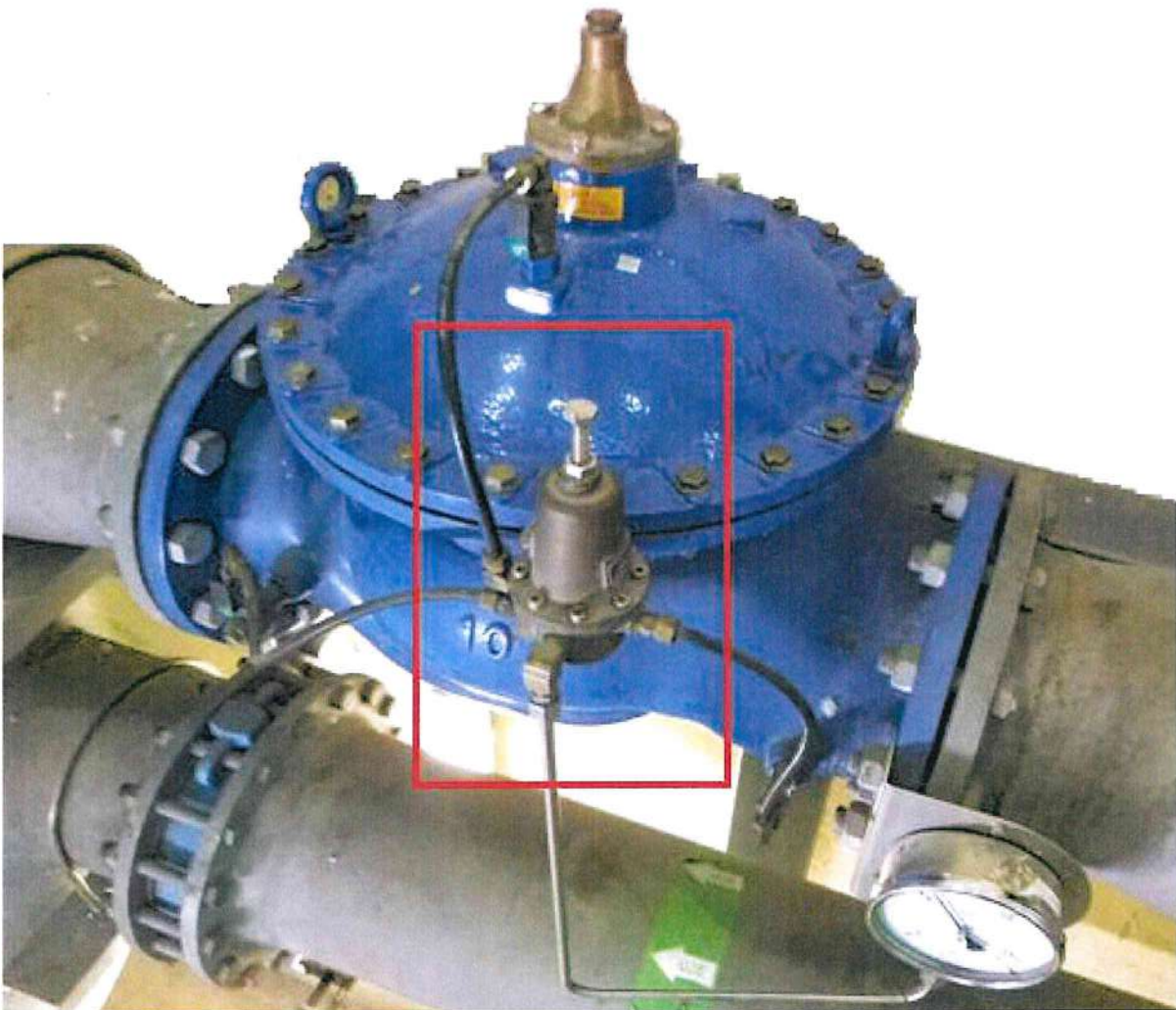
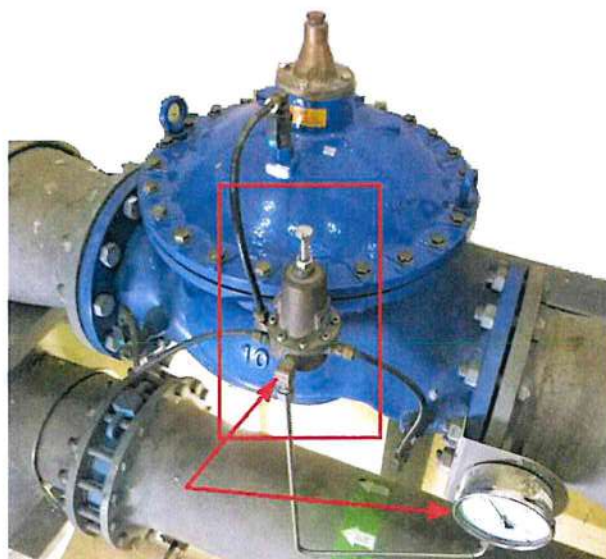


Foto e vend-montimit te paisjes se valvules pilotuese Model CXPR



Shenim sqarues

Duke qene se manometri ekzistues i paisjes kishte fushe-pamje te pa-mjaftueshme vizuale nga operatori, eshte hequr ky manometer dhe, nepermjet daljes (portes) perkatese tek tubacioni perkatese eshte montuar nje manometer tjetër me i madh, i cili ndodhet ne te djathte te kesaj paisje (shih tek fotoja me sipër).

VALVULA PILOTUESE MODEL CXPR



Pamje e produktit te ri te paisjes CX-PR



Foto e targetit te paisjes se Valvules Pilotuese Model CX-PR ne vend-montimin e saj.

VALVULE SIGURIE DHE SHKARKIMI UJI (MBIPRESIONI)

TE DHENAT TEKNIKE KRYESORE

VENDI I PERDORIMIT	: SISTEMI I UJIT FTOHES TE AGREGATIT
FLUIDI QE PERDORET	: UJE TEKNIK (NGA BASENI I LIQENIT)
MODELI I PAISJES	: MODEL TOSACA 1400
PRESIONI NOMINAL	: 16 BAR
DIAMETRI HYRES	: DN100
DIAMETRI DALES	: DN150
PRESIONI I VENDOSUR	: 7,5 BARG
LLOJI I MONTIMIT	: ME FLLANXHA (DN100 X 150)
ZONA E PUNES (AREA)	: 6362 mm ²
TEMPERATURA E PUNES	: 20°C
SASIA E KALIMIT TE UJIT	: 501901 kg/h
MATERIALI I PAISJES	: ÇELIK INOKS
PERMASAT KRYESORE	: A = 180 mm ; B = 220 mm ; C = 663 mm
FLANXHA HYRESE	: 8 (tete) vrima, Ø18mm (per bulona M16)
FLANXHA DALESE	: 8 (tete) vrima, Ø20mm (per bulona M18)
PESHA	: 84 kg



Foto e targetit te paisjes ekzistuese

Description

Type	Safety and Relief valve
Connections	Flanged
Rating	PN-16
Material	Stainless steel
Temperature range	-28°C to +350°C

Requirements

Calculation	EN-4126-1 / 7
Design / Size	EN-12516-1, EN-4126-1 / 7
Materials	EN / ASTM
Inspection	EN-4126-1 / 7 API 527 MSS-SP-55
Tolerances	EN-4126-1 and ASME UG-126

Construction and materials

Item	Description	PN-16 Stainless steel	
			DN-85x100 to DN-200x300 PN-16/40
1	Nozzle		ABSI 316L
2	Body		ABSI 316L
3	Bonnet		ABSI 316L
4	Cap		A351 CF-8
5	Disc		ABSI 316L
6	Guide		ABSI 316L
7	Push Rod		ABSI 316L
8	Spring Button		ABSI 303
9	Adjusting Screw		ABSI 303
10	Lock Nut		ABSI 303
11	Spring		ABSI 302
12	Lever		A351 CF-8
17	Release nut		ABSI 316L
18	Lever axle		ABSI 303
19	Packing lever axle		ABSI 303
20	Gasket cap		PTFE
21	Gasket bonnet		PTFE
22	Gasket pack. lever		Viton
27	Bellow		ABSI 316Ti
28	Soft seat		Viton / PTFE

⊙ Recommended spare parts

Palanca manual
Lifting device



Palanca estanca
Sealed packing lever



T. Prueba
Test gag



Cpo. Intermedio abierto
Open bonnet



Obturador o-ring
Disc soft seat

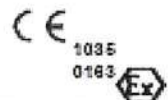


Technical information

Applications	Steam, gases, vapours and liquids
Min. Set pressure	0,2 barg
Seat	metal-metal, PTFE, Viton, Nozzle SS-Stellite
Overpressure	10% for steam, gas and vapour 20% for fire exposure 25% for liquid on thermal relief
Blowdown	7%
Tolerance Set pressure	± 3%
Discharge coefficients	k _v 0,64 for gases k _v 0,5 for liquids





TOSACA, S.A.



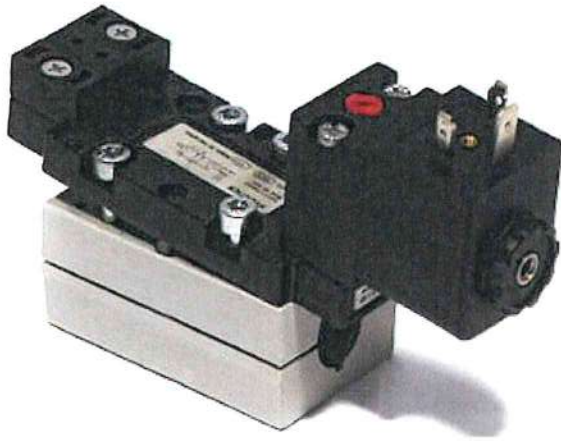
Edición 01/10

Pág. 7

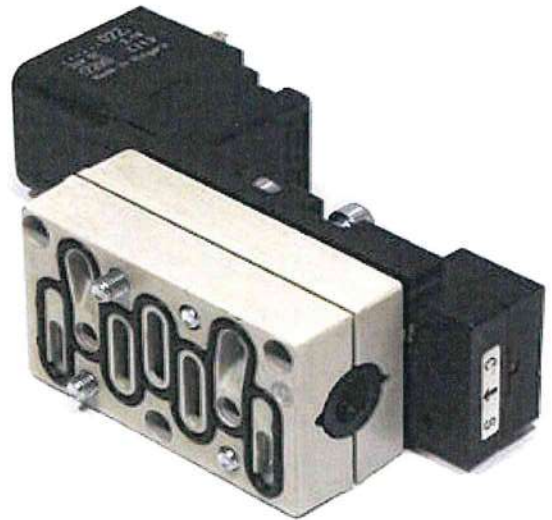
Dimensions

Design	DN	TOSACA Model	Valve Size Inlet by Outlet	EN 1092 Flanges		Orif. (mm)	Area (mm ²)	Face Dimension (mm)			Weight (kg) W
				Inlet	Outlet			A	B	C	
	16	1400 PN 15	15 x 25	16	16	16	201	85	95	253	7
		1400 PN 25	15 x 25	25	16	16	201	85	95	253	7
		1400 PN 40	15 x 25	40	16	16	201	85	95	253	7
		1400 PN 63	15 x 25	63	16	13	133	85	95	253	7
		1400 PN100	15 x 25	100	16	13	133	85	95	253	7
	20	1400 PN 15	20 x 32	16	16	18	254	85	95	253	7,5
		1400 PN 25	20 x 32	25	16	18	254	85	95	253	7,5
		1400 PN 40	20 x 32	40	16	18	254	85	95	253	7,5
		1400 PN 63	20 x 32	63	16	13	133	100	105	253	7,5
		1400 PN100	20 x 32	100	16	13	133	100	105	253	7,5
	26	1400 PN 15	25 x 40	16	16	23,8	445	100	105	275	8
		1400 PN 25	25 x 40	25	16	23,8	445	100	105	275	8
		1400 PN 40	25 x 40	40	16	23,8	445	100	105	275	8
		1400 PN 63	25 x 50	63	16	20	314	110	100	275	8
		1400 PN100	25 x 50	100	16	16	201	110	100	275	8
	32	1400 PN 15	32 x 50	16	16	29,5	683	110	115	325	11,5
		1400 PN 25	32 x 50	25	16	29,5	683	110	115	325	11,5
		1400 PN 40	32 x 50	40	16	29,5	683	110	115	325	11,5
		1400 PN 63	32 x 50	63	16	23,8	445	110	115	325	11,5
		1400 PN100	32 x 50	100	16	20	314	110	115	325	11,5
40	1400 PN 15	40 x 65	16	16	36	1018	115	140	325	12,5	
	1400 PN 25	40 x 65	25	16	36	1018	115	140	325	12,5	
	1400 PN 40	40 x 65	40	16	36	1018	115	140	325	12,5	
	1400 PN 63	40 x 65	63	16	28	531	115	140	325	12,5	
	1400 PN100	40 x 65	100	16	23,8	445	115	140	325	12,5	
60	1400 PN 40	50 x 80	40	16	46	1662	120	150	400	14	
	1400 PN 63	50 x 80	63	16	32	804	120	150	400	14	
	1400 PN100	50 x 80	100	16	32	804	120	150	400	14	
	60	1400 PN 15	50 x 80	16	16	46	1662	120	150	400	14
		1400 PN 25	50 x 80	25	16	46	1662	120	150	400	14
	66	1400 PN 15	65 x 100	16	16	59,5	2781	140	170	450	45
		1400 PN 25	65 x 100	25	16	59,5	2781	140	170	450	45
		1400 PN 40	65 x 100	40	16	59,5	2781	140	170	450	45
		1400 PN 63	65 x 100	63	16	48	1810	140	170	450	50
		1400 PN100	65 x 100	100	16	39	1195	140	170	450	51
	80	1400 PN 15	80 x 125	16	16	72	4072	160	195	625	58
		1400 PN 25	80 x 125	25	16	72	4072	160	195	625	58
		1400 PN 40	80 x 125	40	16	72	4072	160	195	625	58
	100	1400 PN 15	100 x 150	16	16	90	6362	180	220	663	84
		1400 PN 25	100 x 150	25	16	90	6362	180	220	663	84
		1400 PN 40	100 x 150	40	16	90	6362	180	220	663	84
	126	1400 PN 15	125 x 200	16	16	105	8659	200	250	760	140
		1400 PN 25	125 x 200	25	16	105	8659	200	250	760	140
		1400 PN 40	125 x 200	40	16	105	8659	200	250	760	140
	160	1400 PN 15	150 x 250	16	16	125	12272	242	240	760	150
		1400 PN 25	150 x 250	25	16	125	12272	242	240	760	150
		1400 PN 40	150 x 200	40	16	125	12272	242	240	760	150
	200	1400 PN 15	200 x 300	16	16	153	18385	300	290	795	200

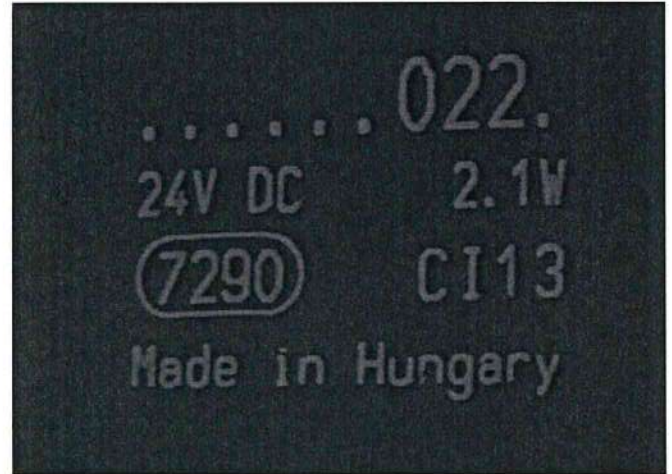
**ELEKTRO - VALVULA E AJRIT
PER PANELIN E FRENIMIT TE AGREGATIT**



Pamje kryesore e elektro-valvules se ajrit



Pamje anesore e elektro-valvules se ajrit



3(tre) Pamje te ndryshme ku tregohen te dhena te stampuara ne trupin e elektro-valvules se ajrit

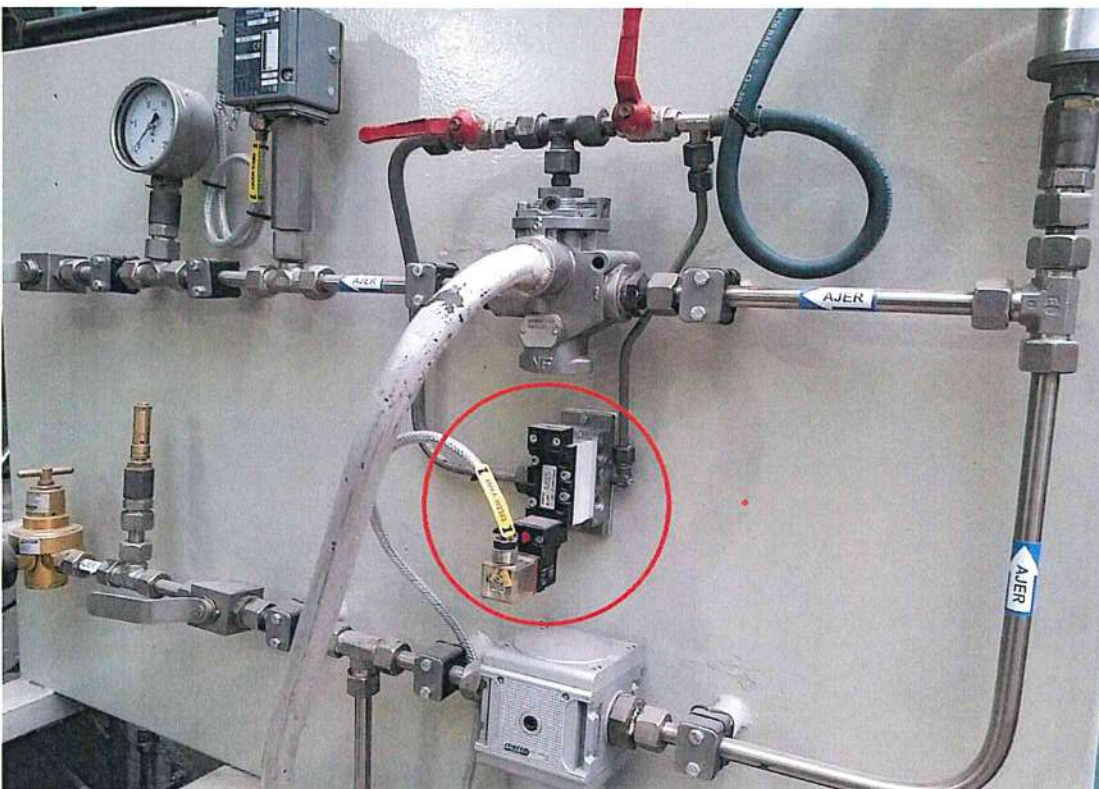
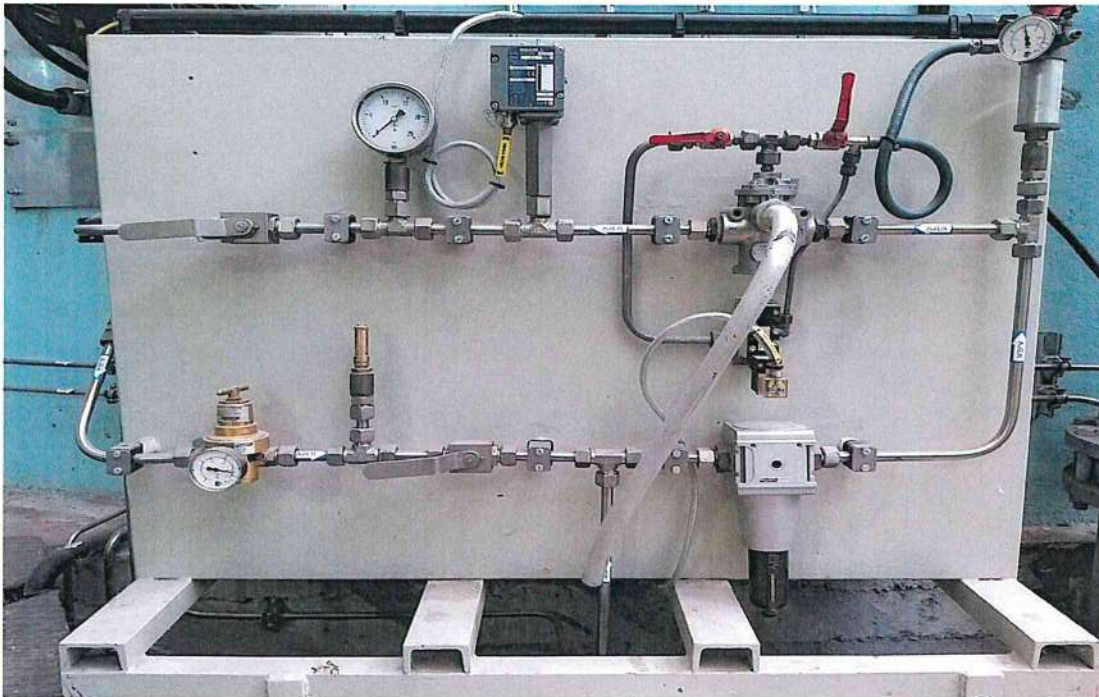
TE DHENAT TEKNIKE KRYESORE

TE PAISJES : ELEKTRO – VALVULA E AJRIT

VENDI I PERDORIMIT	PANELI I FRENIMIT TE AGREGATIT
FLUIDI QE PERDORET	AJER
TIPI I PAISJES (VALVULES)	ELEKTRO-VALVUL AJRI (SOLENOIDE) E THJESHTE
MODELI I PAISJES	V581-5/2SR-024DC-I1-1CNO-LBX-AA-X-C-T0
NR. I MODELIT	5811170650
MENYRA E AKTIVIZIMIT TE VALVULES	ELEKTRIKISHT
PRESIONI I PUNES	3 ... 10 BAR (ne target Max. 7 BAR)
DIAMETRI I PISTONÇINIT	9 mm
TENSIONI	24 V DC
FUQIA	2,1 W
KALIMI I AJRIT	1400 lit/min
LIDHJET PNEUMATIKE	NEN - BAZAMENTIN E VALVULES SOLENOIDE
TEMPERATURA E AMBJENTIT	- 15 50°C
MATERIALI	ALUMIN, GOME BUTADIENE ACRYLONITRILE
PESHA	0,40 kg

V.O. PRODHUESI I ELEKTRO-VALVULES ORIGJINALE ESHTË :
AVENTICS nga HUNGARIA

PAMJE TE ELEKTRO-VALVULES SE AJRIT
TE MONTUAR NE PANELIN E FRENIMIT TE AGREGATIT



FILTER AJRI, MODUL FI03
NE SISTEMIN E AJRIT TE KOMPRIMUAR PER FRENIMIN E AGREGATIT

filter G1"
seri : Modul FI03



Pamje e pergjithshme e modelit te Filtrit te ajrit

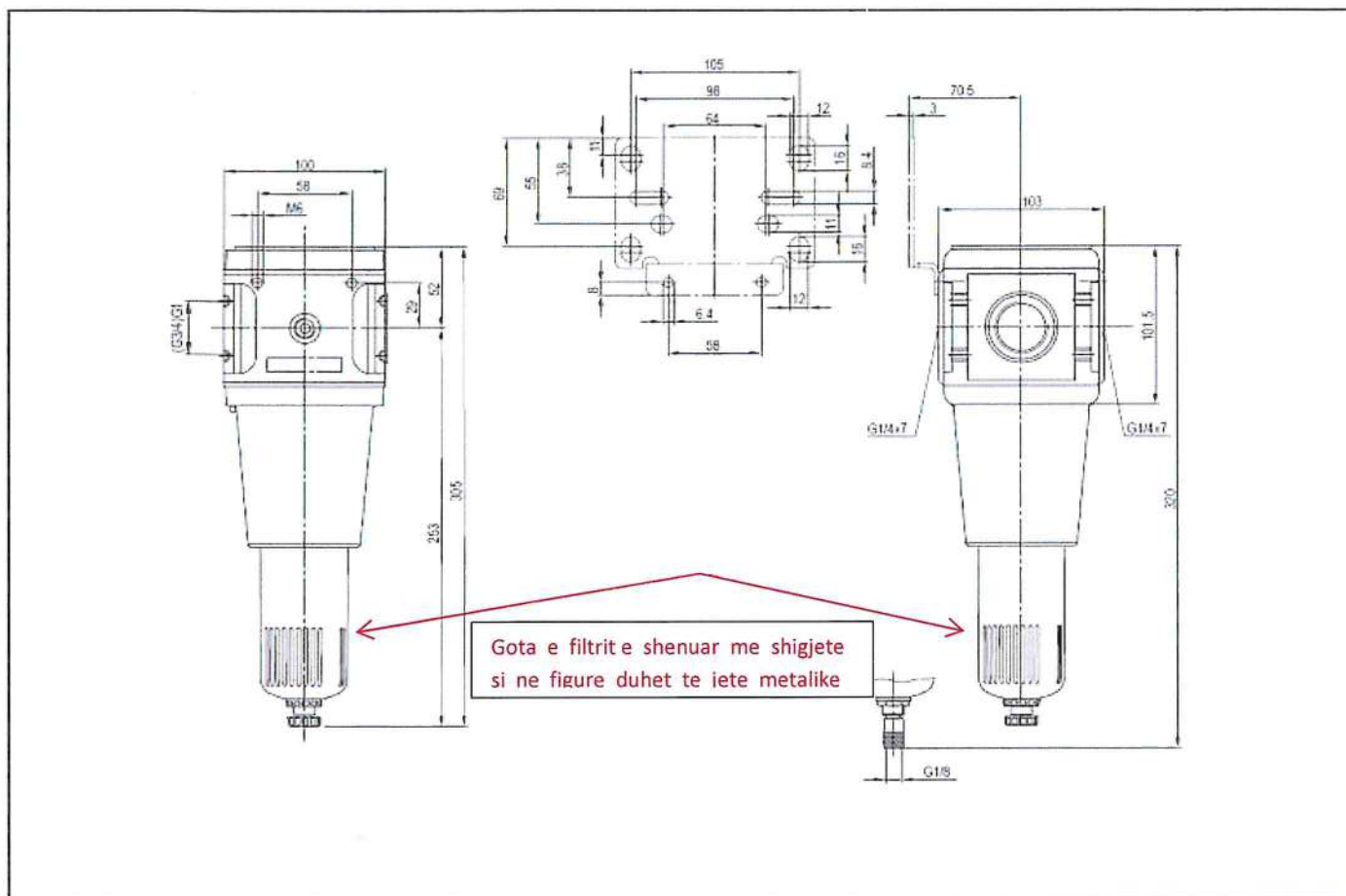
TE DHENAT TEKNIKE

VENDI KU INSTALOHET PANELI I FRENIMIT TE AGREGATIT
LIKUIDI QE FILTROHET AJER I KOMPRIMUAR PER SISTEMIN E FRENIMIT
SERIA E FILTRIT MODUL FI03
KODI I FILTRIT FI03 – 10H – M – A
TIPI I FILTRIT F55S
LIDHJET NEPERMJET FILETIT G1", sipas STANDARTIT ISO228/1
I PROJEKTUAR (DESIGN-i) SI NJE FILTER CENTRIFUGAL, ME ELEMENT - FILTRUES SINTER
(ME PERBERJE NGA METALE APO ALIAZHE METALES),
I PAISUR ME VALVUL DRANAZHIMI GJYSEM-AUTOMATIK
SHKALLA E FILTRIMIT 8 μ m
POZICIONI I MONTIMIT VERTIKAL, ME VIDEN SHKARKUESE POSHTE
TEMPERATURA E AMBIENTIT -10°C deri ne +60°C
PRESIONI I AJRIT NE HYRJE 1,6 Bar deri ne 16 Bar (ose deri ne 20 Bar)
GOTA E SHKARKIMIT TE KONDENSATIT..... METALIKE (METAL BOWL)

V.O. FILLIMISHT GOTA E FILTRIT KA QENE MATERIAL PLASTIK, POR PAS ÇARJEVE DHE PLASARITJEVE TE KETIJ ELEMENTI TE SAJ, GOTA SHKARKUESE E FILTRIT ESHTE REKLAMUAR DHE ME PAS ESHTE ZEVENDESUAR ME MATERIAL METALIK

KERKESA TEKNIKE

- SEJCILI FILTER TE JETE I PAISUR ME AKSESORET PERKATES TE MONTIMIT.
- FILTRAT TE PAISEN EDHE ME 2(dy) GOTA SHKARKUESE TE DRANAZHIT NGA FILTRI (REZERVE), TE CILAT DUHET TE JENE METALIKE.
- DIMENSIONET, JANE SI NE PROJEKTIN E MEPOSHTEM :

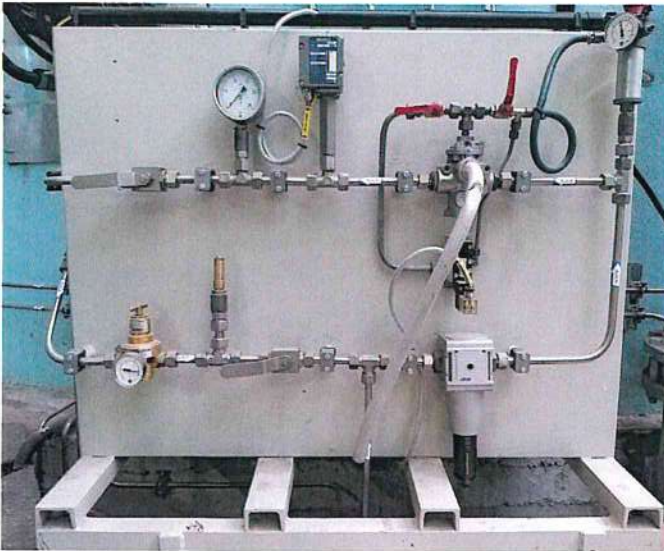


Gota e shkarkimit te kondensatit



3 - Foto te Gotes se shkarkimit te kondensatit

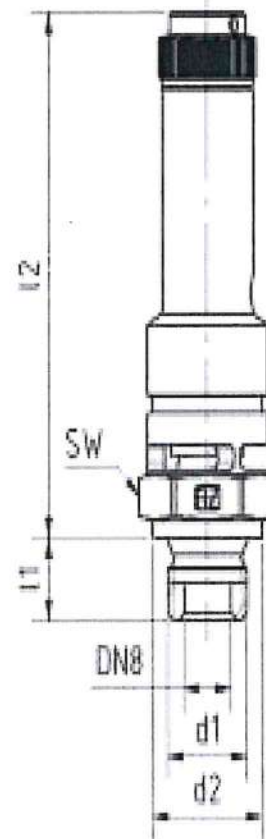
FOTO TE NDRYSHME TE FILTRIT TE AJRIT NE VEND-MONTIMIN E TIJ NE PANELIN E FRENIMIT



VALVULA E MBIPRESIONIT TE AJRIT , P = 15 bar, TIP : 226.03

(TUV – SV – 15 – 882 – 8 – D/G – 0,65)

VENDI I PERDORIMIT	: PANELI I FRENIMIT TE AGREGATIT
PRESIONI KU OPEROHET (I PUNES)	: 02 ÷ 50 BAR
TEMPERATURA KU MUND TE OPEROJE	: - 25°C ÷ + 180°C
PRESIONI I SHKARKIMIT (Sipas projektit)	: 15 bar
TIPI I VALVULES	: <u>226.03</u>
DIAPAZONI I RREGJISTRIMIT TE VALVULES	: 14.21 ÷ 39.90 BAR
KAPACITETI SHKARKUES Qm (ne 0°C)	: 380.4 m ³ /h
MENYRA E MONTIMIT	: ME FILET MALE-G1/2" (Ne pjesen e poshtme te valvules)
MATERIALI I VALVULES	: ÇELIK INOKS , ose BRASS (Preferohet - Çelik Inoks)



Pamje e modelit te valvules se mbipresionit te instaluar ne vend

Skica dhe permasat e valvules se mbipresionit (sigurise)

 RIEGLER Type No.226.03

Safety valve						
Type No.	Pressure range bar	d1 mm	d2 mm	l1 mm	l2 mm	SW mm
226.03	0.2 - 14.2	G 1/2	24.0	14.0	63.0	24
	14.21 - 39.90	G 1/2	24.0	14.0	75.0	24
	39.91 - 50.0	G 1/2	24.0	14.0	82.0	24



Valvula e shkarkimit "Inoks" ne vend-montim



Valvula e shkarkimit "Brass" ne vend-montim



Pamje te mbi-shkrimeve ne trupin e Valvules se mbi-presionit (sigurise)

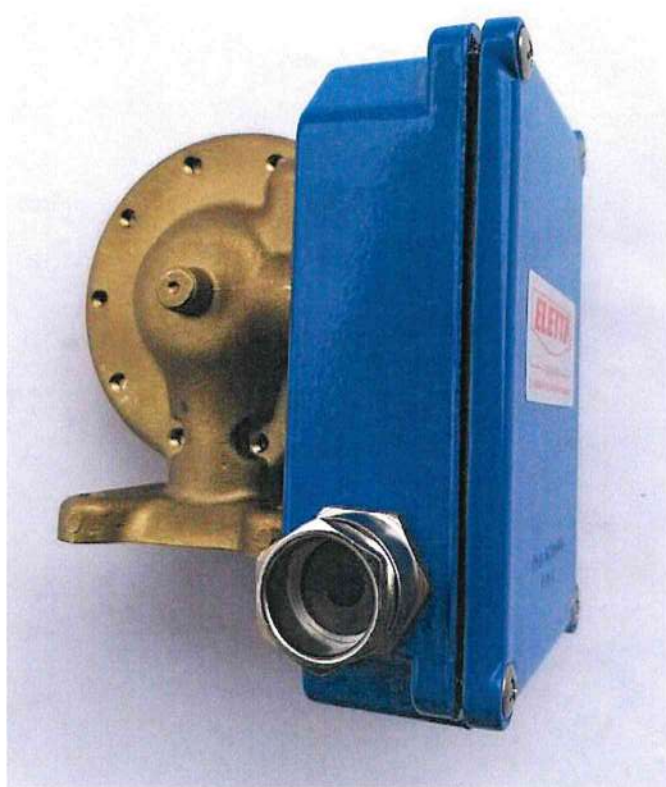
ku jane stampuar : TUV – SV – 15 – 882 – 8 – D/G – 0,65 (tek fotoja majtas), si dhe
ku eshte stampuar : presioni P = 15 bar (tek fotoja djathtas)

KALIMATES UJI, TIP : V1-FA100 -R- I KONTROLLIT TE UJIT FTOHES TE VAJIT TE KUSHINETES PASQYRE

VENDI I MONTIMIT :

NE SISTEMIN E UJIT FTOHES

NE DALJE TE UJIT NGA FTOHESAT E VAJIT TE KUSHINETES PASQYRE



TE DHENAT TEKNIKE

FLUIDI I CILI KONTROLLOHET	UJE
SHKALLA E MATJES	600 – 1200 lit/min
TIPI I APARATIT	V1-FA100 -R-
MODELI I APARATIT	101012100R
TEMPERATURA E UJIT	0°C deri ne 90°C
PRESIONI MAKSIMAL	16 bar
KLASA E MBROJTJES	IP65
DIAMETRI I TUBIT KU MONTOHET	Ø100 mm

ACTUATOR - II

SERVO - VALVULA E RASH-it HIDRAULIK

TE DHENAT TEKNIKE

PC 40 Bar

Temp. vajit 27 °C

2 pyka rregulluese me : - gjatesi (LU) : 2 mm
(vetem per Act. II) - thellesi : 1 mm

Bobina 27.5 Ω

Shpejtesia e references $f_N = 50$ (Hz)

Ndryshimet e tensionit per 1 Hz :

$$\frac{\Delta S_n}{\Delta f} = 1.25 \text{ (V / Hz)}$$

Rryma e references :

$$I_{r1} = \frac{\Delta S_n}{R \cdot \Delta f} \cdot f_N = 2.33 \text{ A}$$

Pjerresia e kurbes :

$$\frac{\Delta U}{\Delta I} = 94.52 \text{ (mm / A)}$$

Korsa reference per pistonin e valvules shperndarese :

$$U_{r1} = \frac{\Delta U}{\Delta I} \cdot I_{r1} = 218 \text{ mm}$$

FOTO TE NDRYSHME TE ACTUATOR-IT II TE RASH-it



TERMOMETER ME KONTAKT, MODEL - TM870, 0 - 120°C

VENDI I PERDORIMIT	KUSHINETA DREJTUESE E GJENERATORIT (SEGM. E SAJ)
MODELI I PAISJES	TM870
PRINCIPI I MATJES	AKTIVIZIM I GAZIT (MBUSHJE ME GAZ INERT – HELIUM-, FIZIOLOGJIKISHT I PADEMSHEM)
TIPI I KONTAKTIT	GAS ACTUATED : MAGNETIC SNAP – ACTION, MODEL - 821
FUNKSIONI I KONTAKTEVE	NORMALISHT HAPUR, NORMALISHT MBYLLUR, NDERRIM
NUMRI I KONTAKTEVE	3-KONTAKTE SI NORMALISHT TE HAPUR OSE TE MBYLLUR 2- SI KONTAKTE TE NDERRUESHME
FUSHA E MATJES SE APARATIT	0°C + 120°C
SHKALLA E MATJES SE TEMPERATURES	+10°C + 120°C
SHKALLEZIMI NE FUSHEN E APARATIT	2°C
LIMITET E GABIMIT TE APARATIT	±2°C
MADHESIA NOMINALE	100 mm
TENSIONI U _{max}	250 V
FUQIA P _{max}	30 W/ 50 VA
POZICIONI I LIDHJEVE ELEKTRIKE	MAJTAS
MENYRA E LIDHJES	ME SONDE KAPILARE
MATERIALI I SONDES	INOKS 1.4571
DIAMETRI	Ø10 mm
KARKASA	LLAMARINE E LAMINUAR ME XHAM MBROJTES
FUSHA E APARATIT	E BARDHE, ME SHKALLEZIM TE SHENUAR ME TE ZEZE
SHIGJETA TREGUESE	PREJ ALUMINI, LYER ME NGJYRE TE ZEZE
OPSIONALE	NESE ESHTË E MUNDUR, FUSHA E APARATURES TE JETE E PAISUR EDHE ME LIKUID PER SHUARJE TE LUHATJEVE TE SHIGJETES TREGUESE

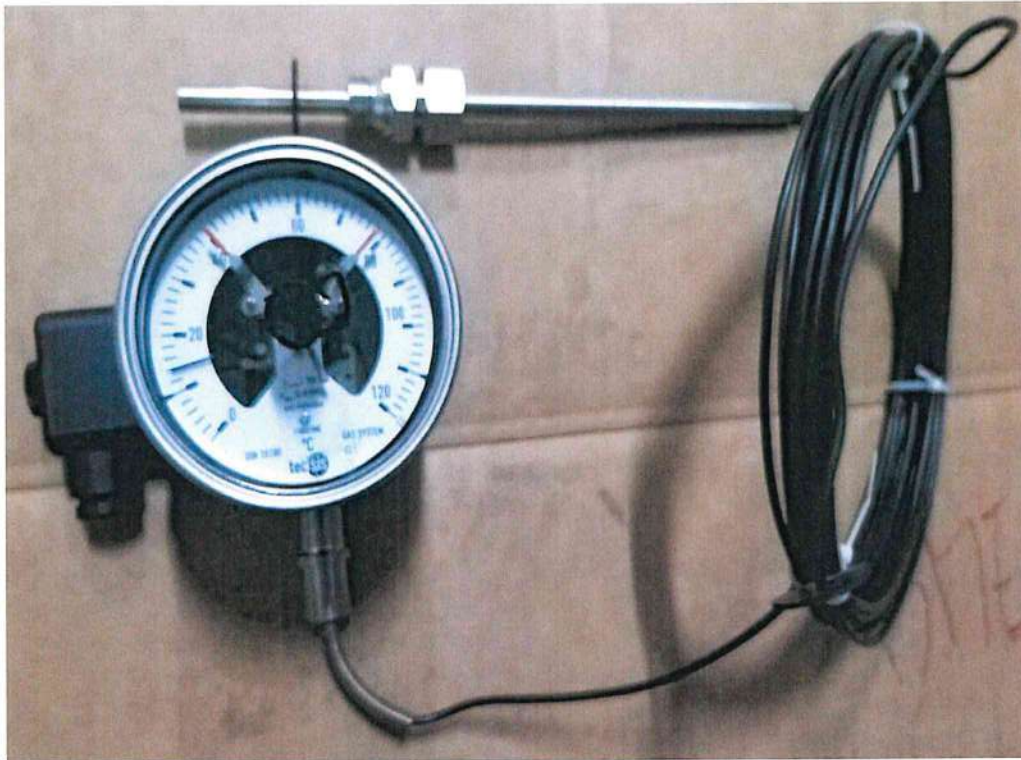


Foto e plote e aparatures se termometrit me kontakt Model TM870, qe perdoret per matje tek segmentet e KDGI-se



Foto e pjesshme se aparatures se termometrit me kontakt Model TM870, qe perdoret per matje tek segmentet e KDGI-se

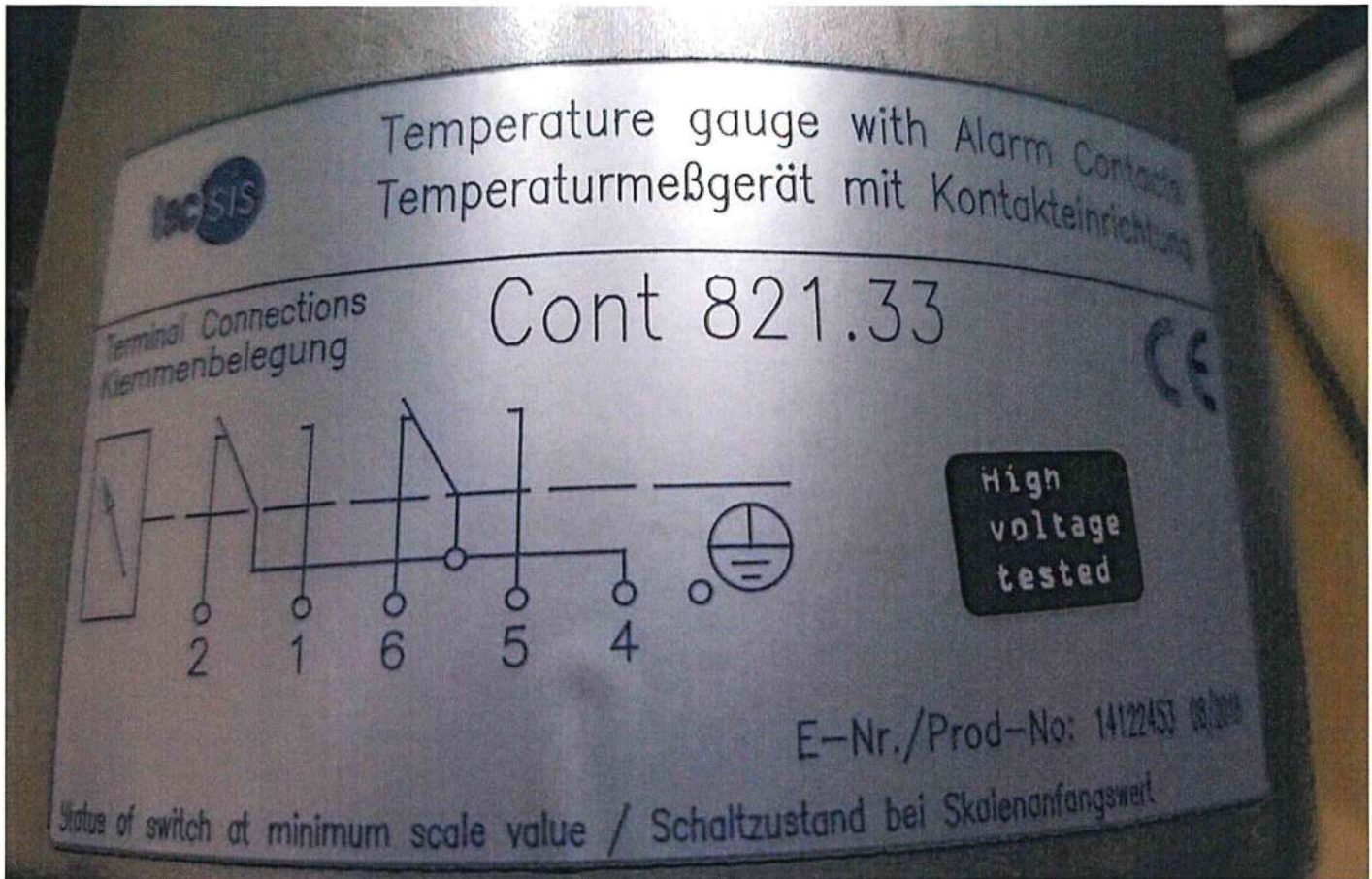
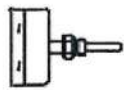


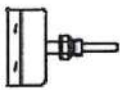





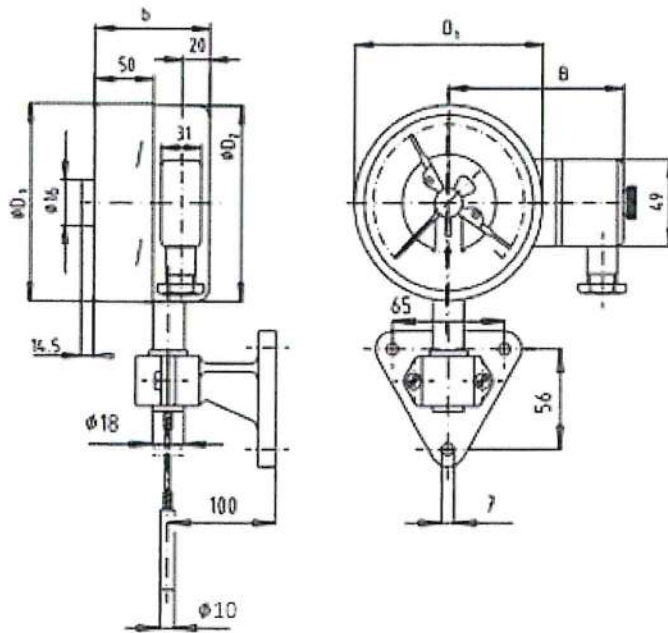
Foto e targetit qe ndodhet ne trupin e paisjes se termometritme kontakt, Model TM870

Model overview

TM810	TM820	TM830	TM840	TM850	TM860	TM870
						
Bimetal			Gas actuated ←			
Back mount	Lower mount	Turnable/ rotateable	Back mount	Lower mount	Turnable/ rotateable	With capillary

**PERMASAT GABARITE TE TERMOMETRIT ME KONTAKT TM870,
QE PERDRET PER TE MATUR DHE KONTROLLUAR TEMPERATUREN E SEG. TE K.D.GJ.-se**

Surface mounting bracket



Case mounting	Dimensions (mm)							
	D (NG)	D ₁	D ₂	D ₃	d ₁	d ₂	B	b
Panel mounting flange	100	101	99	132	116	4.8	94	88
	160	161	159	196	178	5.5	124	100
Surface mounting flange	100	101	99	132	116	4.8	94	88
	160	161	159	196	178	5.5	124	100
Surface mounting bracket	100	101	99	---	---	---	94	112
	160	161	159	---	---	---	124	100

RRIP SPECIAL, TIP "BM8P – 0661 – HC"
(PER IMPIANTIN E VEÇIMIT TE VAJIT NE Puset E THELLESISE)



Pamje pjesore e rripit special qe veçon vajin

TE DHENAT TEKNIKE

VENDI KU PERDORET RRYPI	IMPIANTI I VEÇIMIT TE VAJIT NE Puset E THELLESISE
MODELI I IMPIANTIT	MODEL 8, M8SS-0661-HC (SM8S) Special Design: Stainless steel 316 (SM8S), Flat Mount
PERSHKRIMI I IMPIANTIT NE TARGET	ABANAKI - OIL GRABBER® SKIMMER MODEL 8 ²
TIPI I RRYPIT	BM8P – 0661
GJATESIA E RRYPIT	661" (inch.) / ose ~16,8 m (ndermjet dy qendrave te pulexhave)
MATERIALI I RRYPIT	POLYMER
GJERESIA E RRYPIT	8" (inch.) / ose ~200 mm
MENYRA E MONTIMIT	SIPAS SKEMES BASHKENGJITUR (TE KONSTRUKTORIT)

FUNKSIONI I RRYPIT DHE I IMPIANTIT KU ESHTË MONTUAR KY RRYP

SHERBEN PER NDARJEN & NGRITJEN SIPER TE VAJIT NGA UJI APO NGA EMULSIONET E ≠ ME BAZE UJI, NEPERMJET METODESES SE FLOTIMIT PA PATUR NEVOJE PER POMPE, NEPERMJET NJE PASTRIMI MJAFT TE THJESHTE, E CILA KERKON NJE MIREMBAJTJE MINIMALE.

Paraqitja e permasave gabarite te impiantit te veçimit te vajit nga uji
 E instaluar ne pusin Nr.3 te Thellesise

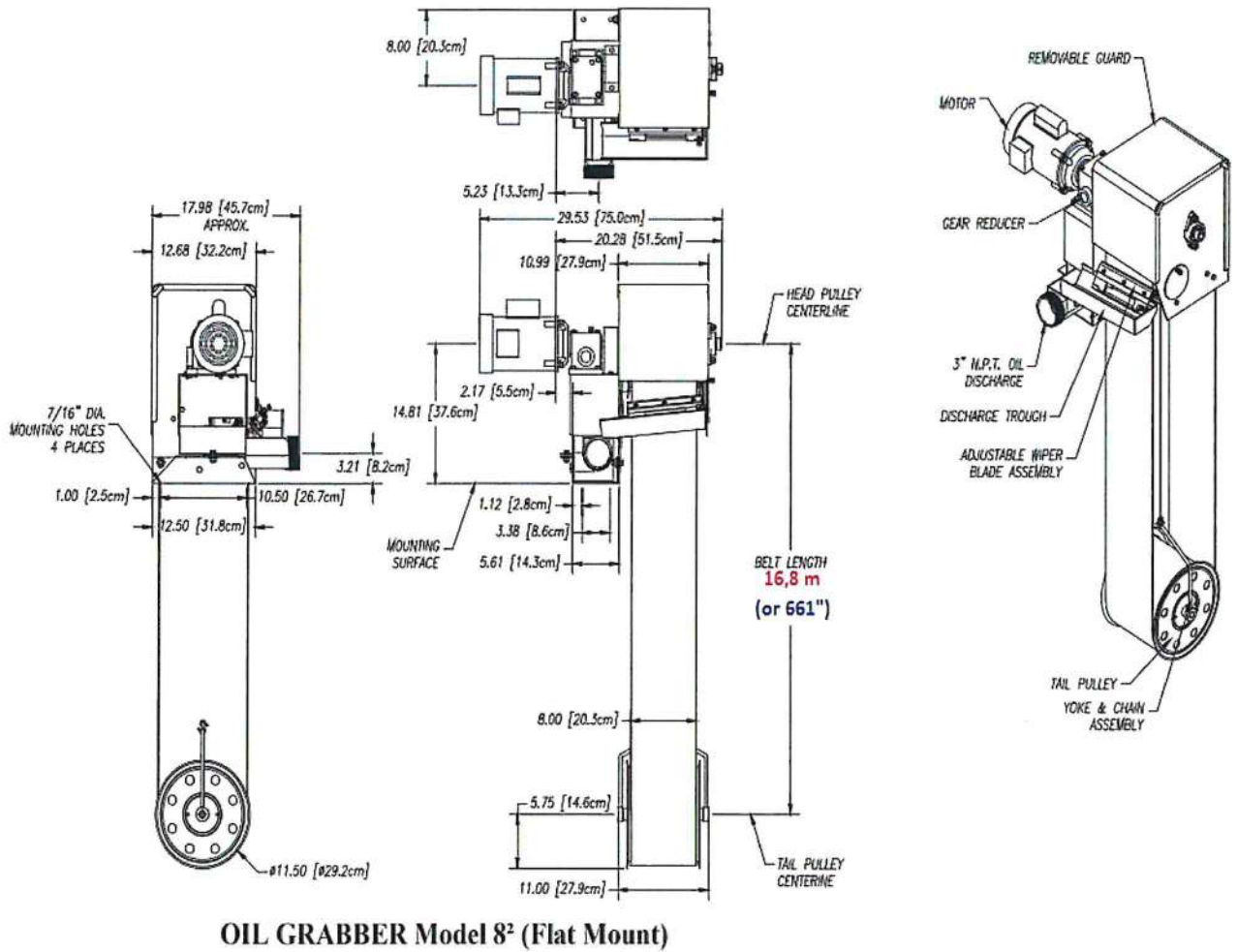


Foto ilustruese te Impiantit te veçimit te vajit



2- Foto te Impiantit te veçimit te vajit prane Pusit Nr.3 te Thellesise



Foto e targetit te paisjes kryesore te impiantit te veçimit te vajit

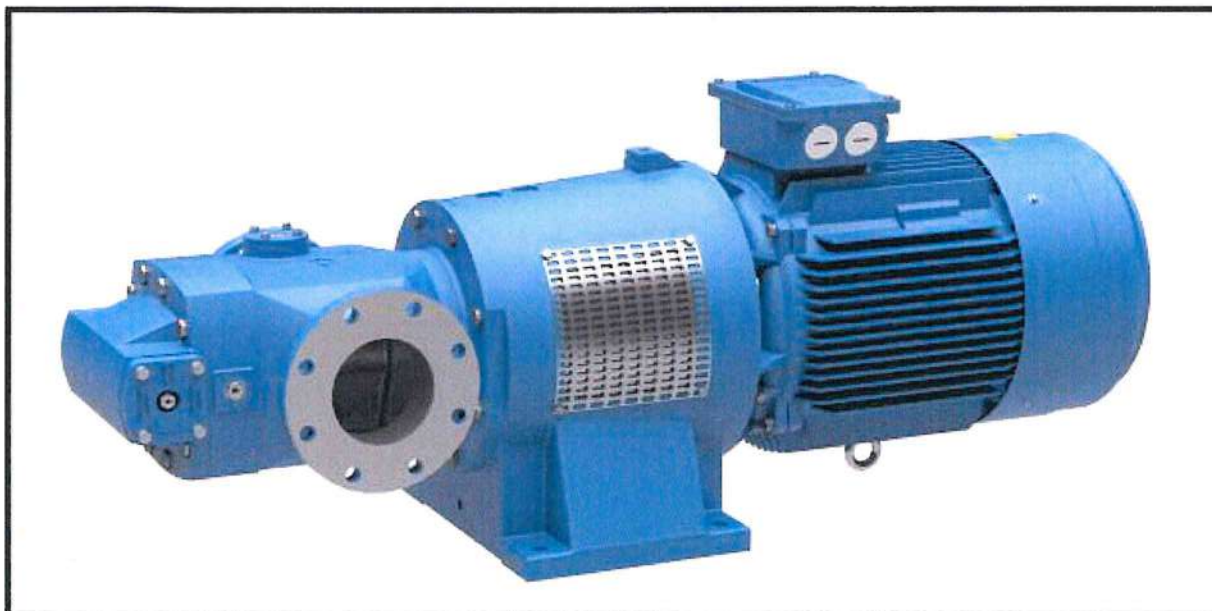


Foto e targetit te elektromotorit te Impiantit te veçimit te vajit

KITE MIREMBAJTJEJE PER POMPAT "IMO"

TE DHENA TE PERGJITHSHME

Pajisja ku perdoren kitet e mirembajtjes Pompa "IMO", (me presioni te ulet te vajit)
Vendi i instalimit te Pompes "IMO" Sistemi i Qarkullimit te vajit te Kushinetes Pasqyre
Modeli i Pompes "IMO" ACF 100 N5
Numri i Pompave te ketij modeli per çdo agregat..... 2 (dy) Cope



Pamje e pergjithshme e modelit te Elektro-pompes se qarkullimit te vajit te Kushinetes Pasqyre

SPECIFIKIMET TEKNIKE

Emertimi i Pompes "IMO"
Tipi i Pompes ACF (N5)
Madhesia (numri) i Pompes 100
Kodi i artikullit (Kitit)
- No. i Pozicionit G057
- Emertimi i kompletit te pjeseve rezerve Joint kit xVxx
- Numri iden.i pjeses sipas madhesise se pompes 192991
Kodi i artikullit (Kitit)
- No. i Pozicionit G050
- Emertimi i kompletit te pjeseve rezerve Shaft seal xVxx
- Numri iden.i pjeses sipas madhesise se pompes 192526

GUARNICION SPECIAL I RRAFSHET, PN10/40, DN50, REZISTENT NDAJ KLORINES



Pamje e Guarnicionit Special , rezistent ndaj klorines

TE DHENAT TEKNIKE

PRESIONI NOMINAL	PN10/40 Bar
PRESIONI MAKSIMAL	P_{max} . 55 Bar
DIAMETRI NOMINAL	DN50
TRASHESIA	2 mm
GABARITET	61 x 107 x 2 (diametri i brend. x diametri i jasht. x trashesi)
TIPI I GUARNICIONIT	2100
STRESI FILLESTAR MINIMAL	10 MPa
STRESI FILLESTAR MAKSIMAL	150 MPa
TEMPERATURA MINIMALE	- 210°C
TEMPERATURA MAKSIMALE	+ 260°C
NGJESHJA	30–40 %
REKUPERIMI	30%
DENSITETI	1,7 g/cm ³

V.O. Per reference, Guarnicioni origjinal i perdorur nga Kontraktori qe kreu rehabilitimin eshte :

Marka : LEADER, Seria : CLIPPERLON 2110 Modified PTFE, Artikulli ERIKS # : 11934247

PAJISJA : KONTROLLUES NIVELI UJI ME 3 KONTAKTE

Vendi i Perdorimit

: Kapaku i Turbines

Pershkrimi i artikullit ne projekt : Magnetic float switch RSM /3 switches

Pershkrimi i artikullit ne pajisje : Schwimmer - Magnetschalter

Tipi : AFV EN 50/16/B1-VUUU-L690/12-1xV62A

Prodhuesi : WIKA/KUEBLER

Sasia : 4 (katër) cope

Pamje e plote e pajisjes



Pamje e boksit te kontakteve te pajisjes

