



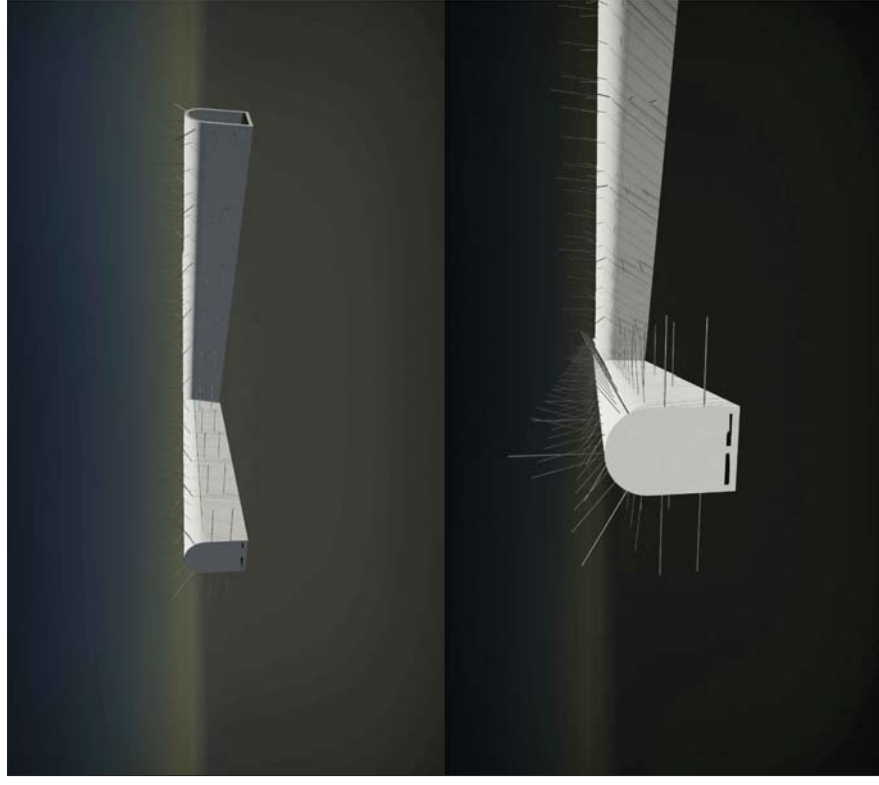
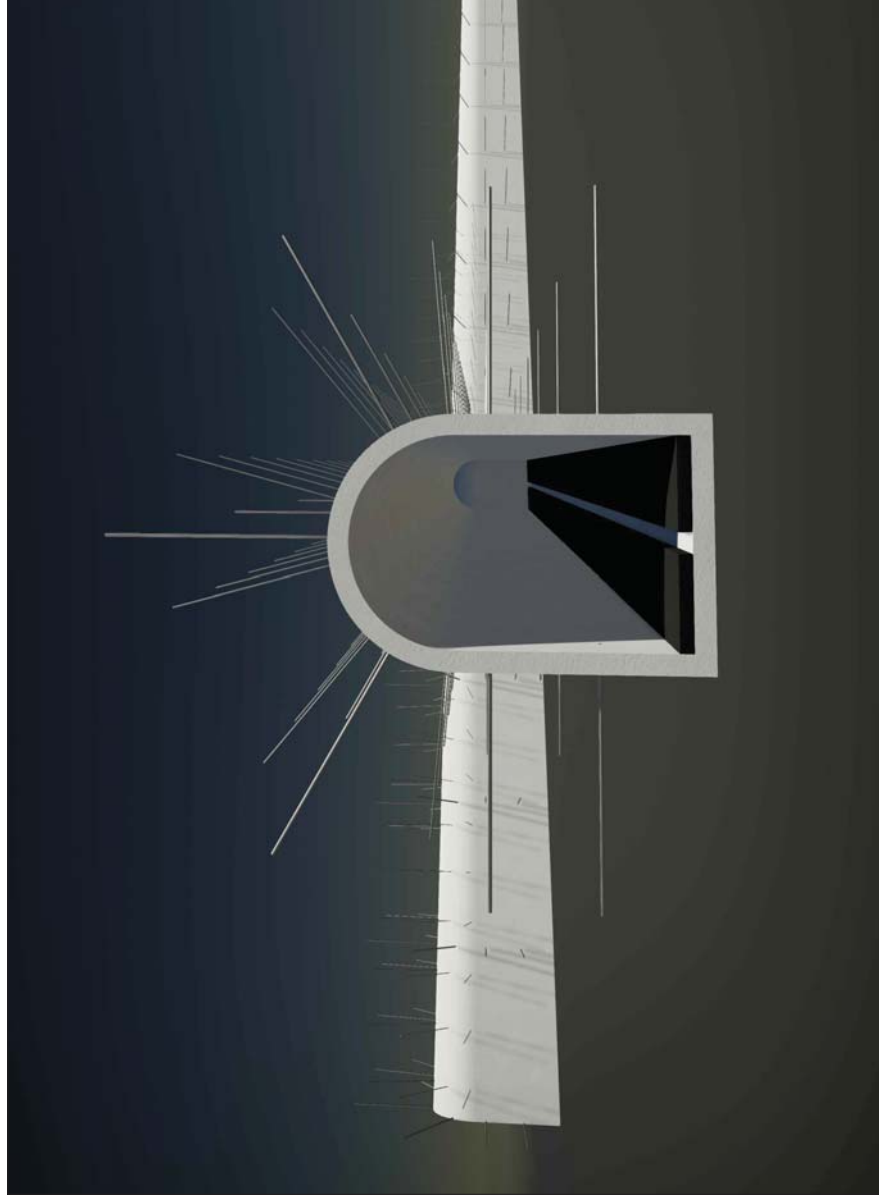
REPUBLIKA E SHQIPERISE

**Objekti : REHABILITIMI I GALERISE SE CIMENTIMIT  
NE KUOTEN 296 MMND NE SHPATULLEN E  
MAJTE TE DIGES FIERZE (RRUGA LIDHESE).**

**DETAJE NDERTIMORE - GALERIA**

# VIZUALIZIM 3D - GALERIA

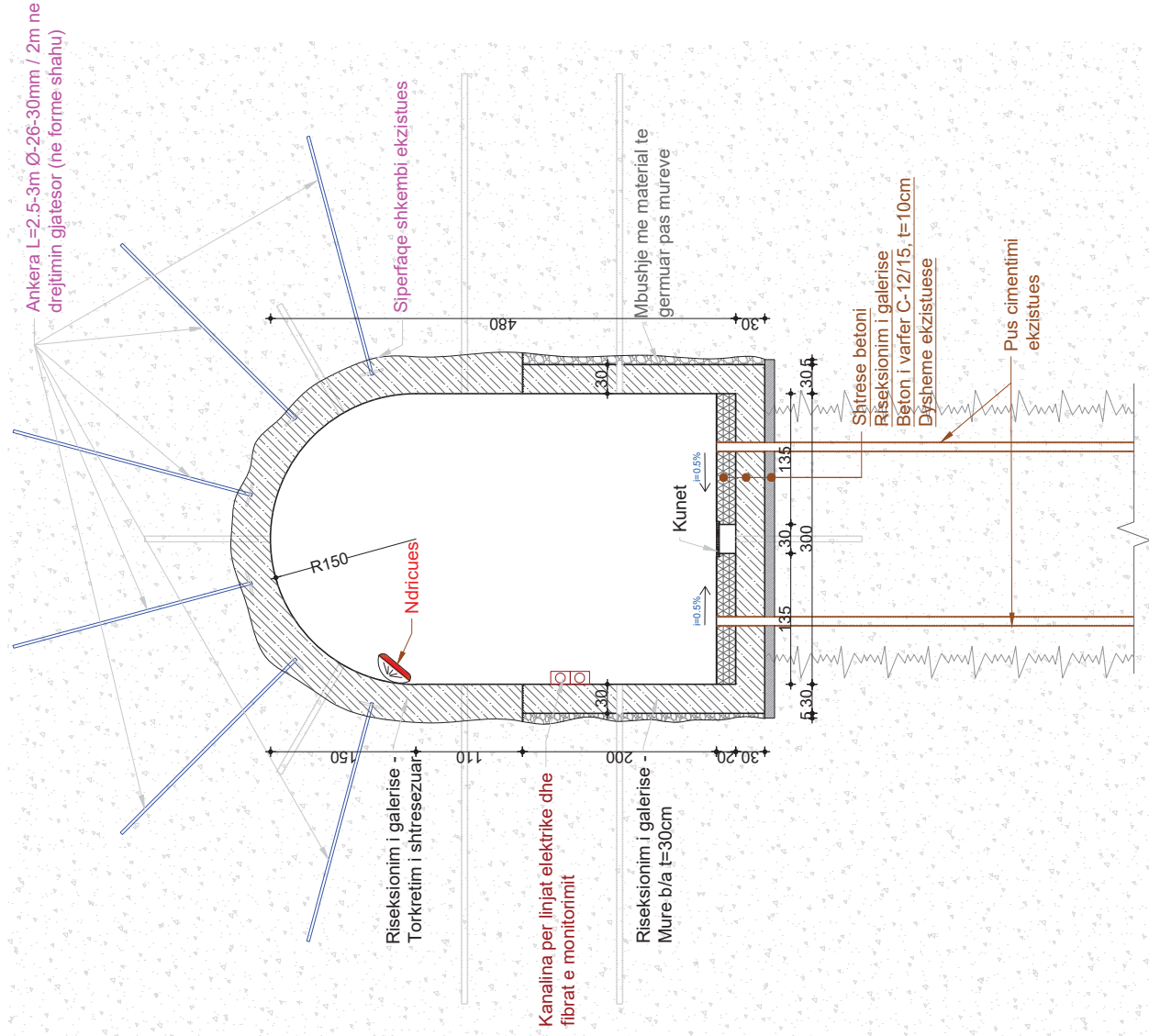
## L=300ml



KORPORATA ELEKTROENERGJIKE SHQIPTARE NJESIA PRODHUSE HEC FIERZE	PROJEKT ZBATIM  2022	GRUPI I PROJEKTIMIT Ing. ENTELA CANO    Ing. DRITAN BUZI    Ing. THANAS CARKA Ing. MEFAIL HALILAJ    Ing. VALENTINA HOXHA    Ark. PAQSOR KAJMAKU		"A & E ENGINEERING" sh.p.k		REHABILITIMI I GALERISE SE CIMENTIMIT NE KUOTEN 296 MMND NE SHPATULLEN E MAJTE TE DIGES FIERZE	SHKALLA
				Adresa: Rr. "ISLAM ALLA" Mob : ++355 (0)69 207/9981 Mob : ++355 (0)69 207/9982		VIZUALIZIM 3D - GALERIA L= 300ml	FL. K. 00 1:50

# SEKSIONI TIP NR.1

Shk. 1:50



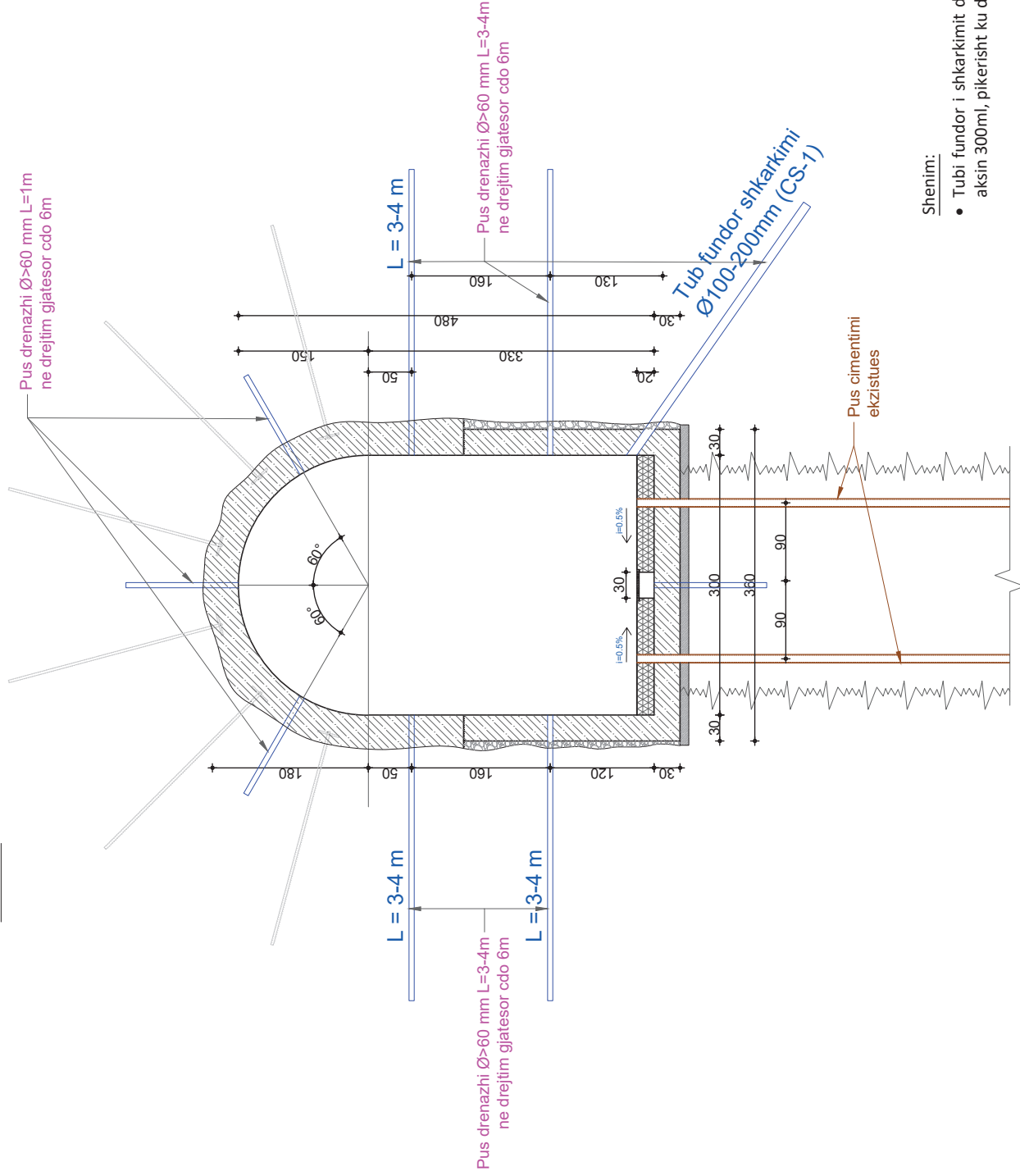
- Tuneli do te riseksionohet sipas prerjes se dhene ne vizatimin e mesiperem. Te gjitha pjeset me te dala te tunelit do te geryhen me ekskavator me cekic duke patur kuj des per te mos cenuar integritetin strukturor te tij.
- Pas riseksionimit te tunelit do te vendosen dy zgara celiku Ø22/12.5 cm ne te dyja drejtimet.
- Tunelit do ti kryhen ankerime pikesore me ankera L=2.5-3.0 m cdo 2 m me shufre Ø30 te viaskuar dhe me plake metalike 40x40 te sfazuara ne forme shahu.
- Ankerat do kene keto karakteristika: diametri jashtem 32mm, diametri i brendshem 20mm, seksioni 439mm<sup>2</sup>, pesha per njesi gjatesie 3.4kg/m, ngarkese shkaterrimi 280kN, ngarkese ne rrjedhmeri 225kN si dhe ngarkese ne gjendje sherbimi (puene) 170kN.
- Lidhja e shufres me pllaken do te behet me filetim dhe bullon (ose me saldlim ne rast se nuk arrihet te filetohet shufra).
- Ky seksion tuneli i eshte i pershtatshem per makina sherbimi monitorimi.
- Pas vendosjes se zggarave te hekurit per veshjen e tunelit, do te kryhet betonimi i shtreses me beton te projektuar me trashesi 30 cm per murin, dhe variabel per pjesen me tortretim (shiko vizatimin perkates).
- Betoni duhet te jete i klases C25/30 dhe betonimi te kryhet me pompe per beton te projektuar.
- Nderhyrjet ne ankorime dhe veshje te tunelit do te realizohen ne segmente te caktuara, me gjatesi totale L = 75m.
- Linjat elektrike ekzistuese dhe te monitorimit do kalojne ne brendesi te kanalimave, vendosur ne pjesen anesore te seksionit.
- Shtresat e dyshemes do rikonstruktohen me realizimin e nje dyshemeje b/a 20cm, me pjerrsi dhe kunete ne mes.
- Ne seksion do te vendosen tuba (puse drenazhi) PVC Ø60 me vrima, te inkastruara ne shkemb me gjatesi variabel, per sistemin e filtrimeve, si ne seksionin terthor tip ne projekt.
- Kuneta e ujrave te shiut, pusetat dhe kolektoret do pozicionohen ne mes te hapesires se pjeses kaluese.
- Puset e cimentimit te mos preken.

KORPORATA ELEKTROENERGJITIKE SHQIPTARE NJESIA PRODHUESE HEC FIERZE	PROJEKT ZBATIM 2022	GRUPI I PROJEKTIMIT Ing. ENTELA CANO Ing. DRITAN BUZI Ing. MEFAIL HALILAJ Ing. VALENTINA HOXHA Ark. PAQSOR KAJMAKU		"A & E ENGINEERING" sh.p.k Adresa: Rr. "ISLAM ALLA" Mob: ++355 (0)69 207/9981 Mob: ++355 (0)69 207/9982	REHABILITIMI I GALERISE SE CIMENTIMIT NE KUOTEN 296 MMND NE SHPATULLEN E MAJTE TE DIGES FIERZE	SHKALLA FL. K. 01
				SEKSIONI TERTHORE TIP	FL. K. 01	1:50

# SEKSIONI TIP - (puse drenazhi)

Aplikohet ne 200ml, +0.000 - +0.150

Shk. 1:50



## Shenim:

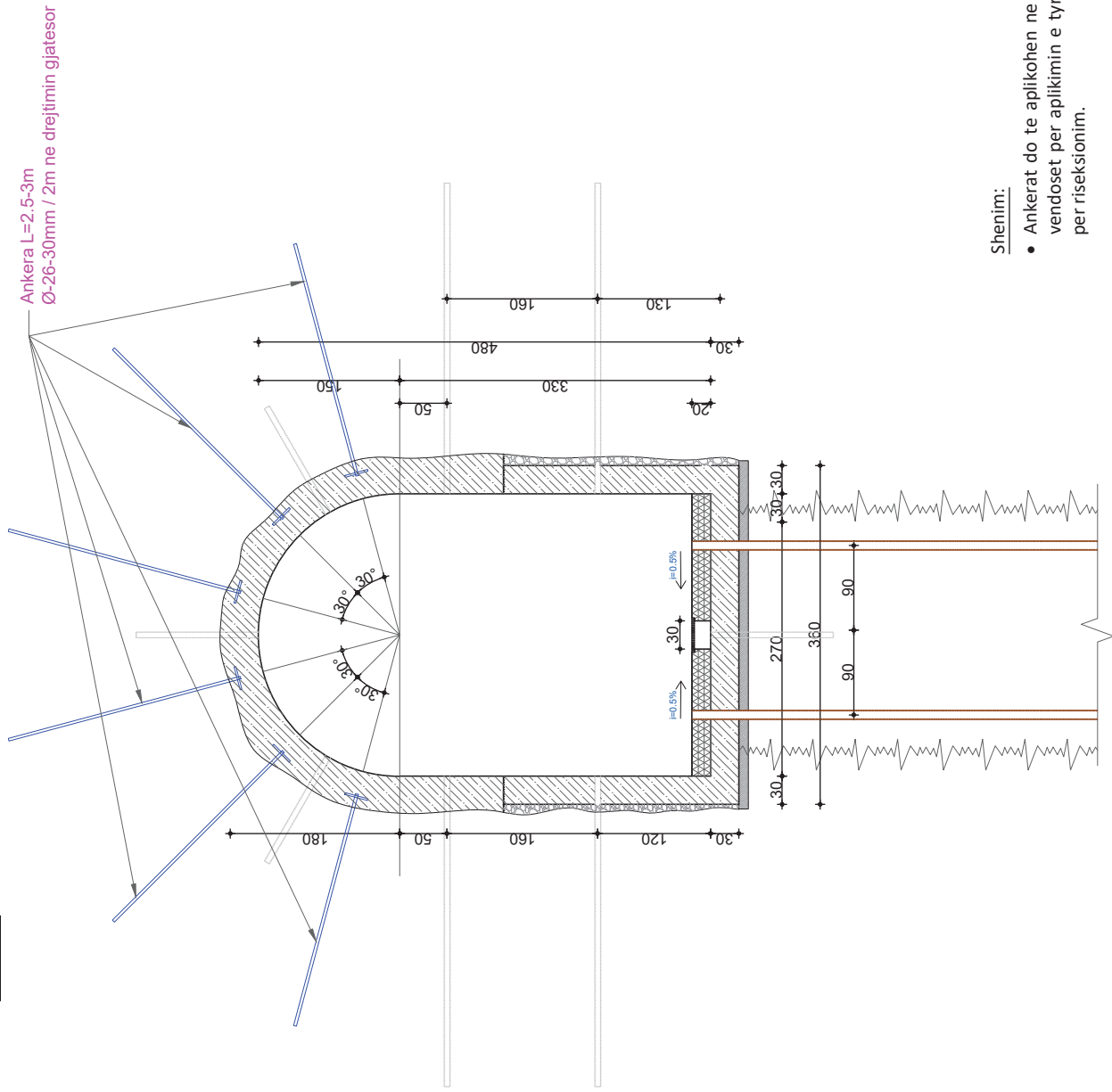
- Tubi fundor i shkarkimit do te aplikohet vetem ne prerjen terthore CS-1 ne aksin 300m, pikerisht ku do te pozicionohet balli fundor i galerise.

KORPORATA ELEKTROENERGJIKE SHQIPTARE NJESIA PRODHUSE HEC FIERZE	PROJEKT ZBATIM 2022	GRUPI I PROJEKTIMIT		"A & E ENGINEERING" sh.p.k Adresa: Rr. "ISLAM ALLA" Mobi : ++355 (0)69 207/9981 Mobi : ++355 (0)69 207/9982	REHABILITIMI I GALERISE SE CIMENTIMIT NE KUOTEN 296 MMND NE SHPATULLEN E MAJTE TE DIGES FIERZE	SHKALLA
		Ing. ENTELA CANO Ing. MEFAIL HALILAJ	Ing. DRITAN BUZI Ing. VALENTINA HOXHA		Atk. PAQSOR KAJMAKU	SEKSIONI TERTHORE TIP(Puset e Drenazhit)

# SEKSIONI TIP - (ankera)

Aplikohet ne 100ml, +0.000 - +0.100

Shk. 1:50



## Shenim:

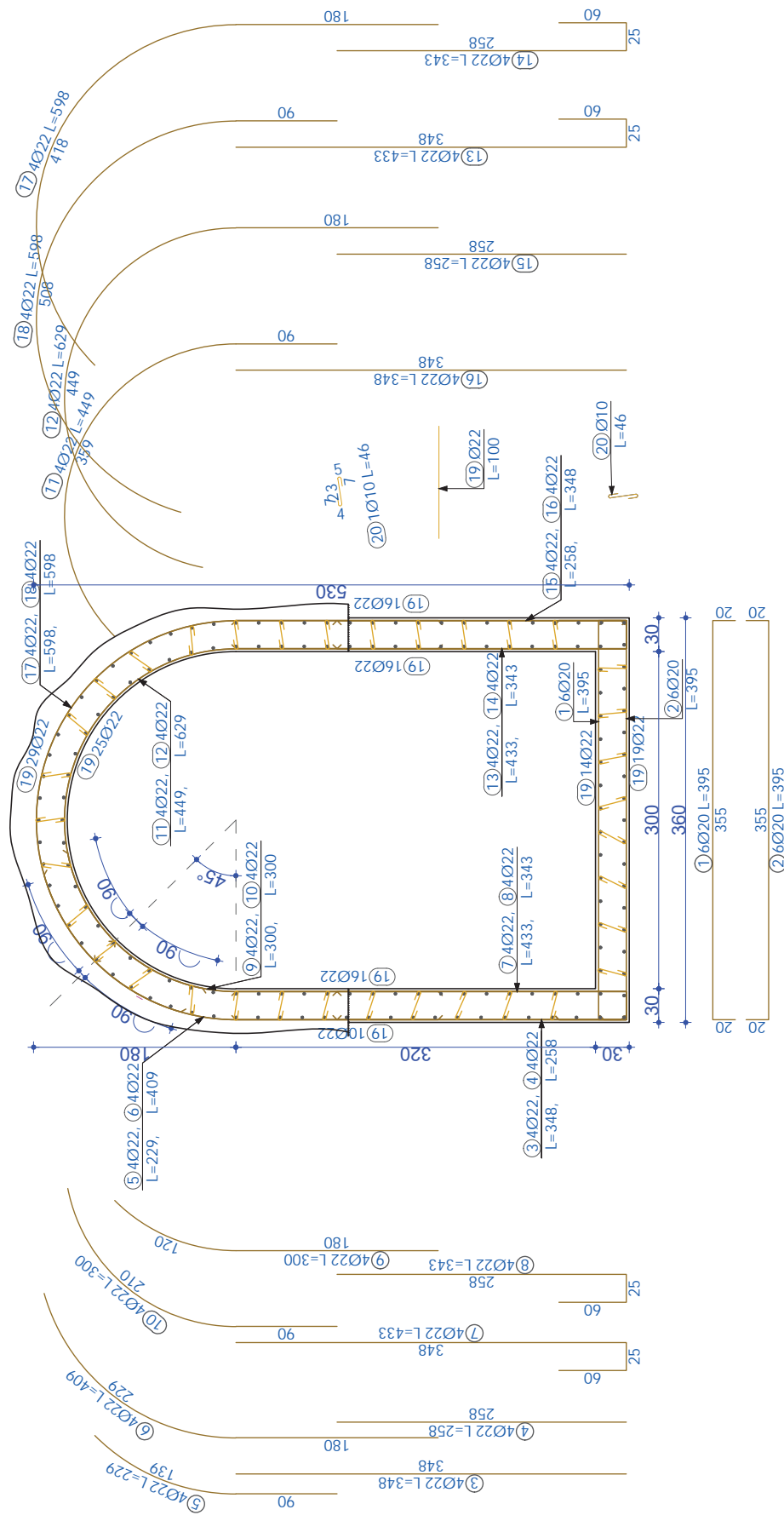
- Ankerat do te aplikohen ne 100m e para te galerise. Ne vazhdimesi, do te vendoset per aplikimin e tyre ne varesi te situates ekzistuese pas germimit per riseksionim.

KORPORATA ELEKTROENERGJIJTIKE SHQIPTARE NJESIA PRODHUESE HEC FIERZE	PROJEKT ZBATIM 2022	GRUPI I PROJEKTIMIT Ing. ENTELA CANO Ing. DRITAN BUZI Ing. MEFAIL HALILAJ Ing. THANAS CARKA Ing. VALENTINA HOXHA Ark. PAQSOR KAJMAKU		"A & E ENGINEERING" sh.p.k		REHABILITIMI I GALERISE SE CIMENTIMIT NE KUOTEN 296 MMND NE SHPATULLEN E MAJTE TE DIGES FIERZE
				SEKSIONI TERTHORE TIP (Ankerat)	SHKALLA 1:50	

Adresa: Rr. "ISLAM ALLA"  
Mob: ++355 (0)69 207/9981  
Mob: ++355 (0)69 207/9982

# ARMIMI TIP S1

Shk. 1:50



KORPORATA ELEKTROENERGJITIKE SHQIPTARE NJESIA PRODHUSE HEC FIERZE	PROJEKT ZBATIM 2022	GRUPI I PROJEKTIMIT Ing. ENTELA CANO Ing. DRITAN BUZI Ing. MEFAIL HALILAJ	Ing. THANAS CARKA Ark. PAQSOR KAJMAKU	"A & E ENGINEERING" sh.p.k Adresa: Rr. "ISLAM ALLA" Mob: ++355 (0)69 207/9981 Mob: ++355 (0)69 207/9982	REHABILITIMI I GALERISE SE CIMENTIMIT NE KUOTEN 296 MMND NE SHPATULLEN E MAJTE TE DIGES FIERZE	SHKALLA
					ARMIMI TIP I SEKSIONIT TE GALERISE	FL. K. 04



TABELA E SPECIFIKIMIT TE ARMATURES				
Nr.	FORMA DHE PERMASAT [cm]	Ø	L [m]	L (Totale) [m]
Galeria final (1 pcs.)				
1		20	3.95	23.70
2		20	3.95	23.70
3		22	3.48	13.92
4		22	2.58	10.32
5		22	2.29	9.16
6		22	4.09	16.36
7		22	4.33	17.32
8		22	3.43	13.72
9		22	3.00	12.00
10		22	3.00	12.00
11		22	4.49	17.96
12		22	6.29	25.16
13		22	4.33	17.32
14		22	3.43	13.72
15		22	2.58	10.32
16		22	3.48	13.92
17		22	5.98	23.92
18		22	5.98	23.92
19		22	1.00	33.00
20		10	0.46	16.10

TABELA PERMBLEDHESE E ARMATURES (Galeria final)

Ø [mm]	L [m]	PESHA NJESI [kg/ml]	PESHA [kg]
10	16.10	0.62	9.93

GRUPI I PROJEKTIMIT

Ing. ENTELA CANO Ing. DRITAN BUZI  
Ing. MEFAIL HALILAJ Ing. VALENTINA HOXHA

2022

REHABILITIMI I GALERISE SE CIMENTIMIT NE KUOTEN 296 MMND NE SHPATULLEN E MAJTE TE DIGES FIERZE

TABELA E HEKURIT-SEKSIONI TIP

FL. K.05

I:..

"A & E ENGINEERING" sh.p.k

Adresa: Rr. "ISLAM ALLA"  
Mob: ++355 (0)69 207/9981  
Mob: ++355 (0)69 207/9982



KORPORATA ELEKTROENERGJIJITIKE SHQIPTARE  
NJESIA PRODHUSE HEC FIERZE

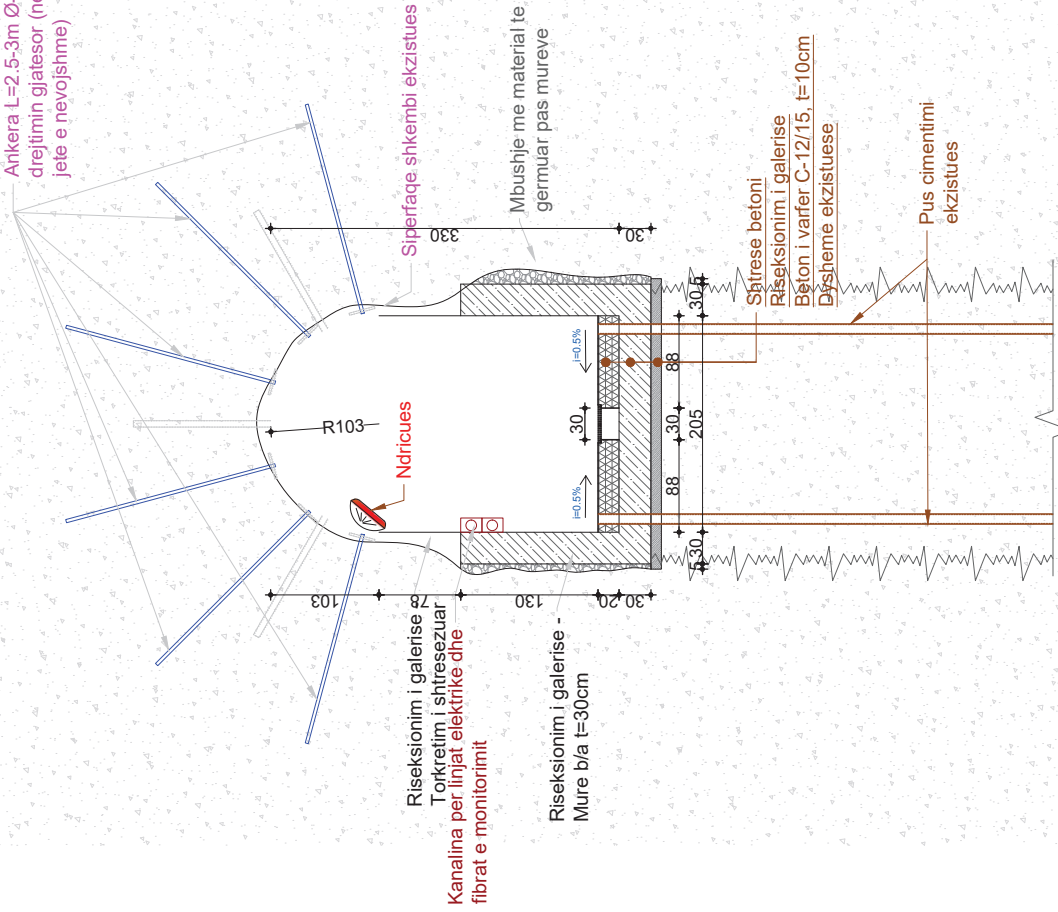


# SEKSIONI TIP NR.2

(aplikohet ne 150ml, nga 0+150m-0+300m)

Shk. 1:50

Ankera L=2.5-3m Ø-26-30mm / 2m ne drejtimin gjatesor (ne forme shahu, ku te jete e nevojshme)



# ARMIMI TIP S2

Shk. 1:50

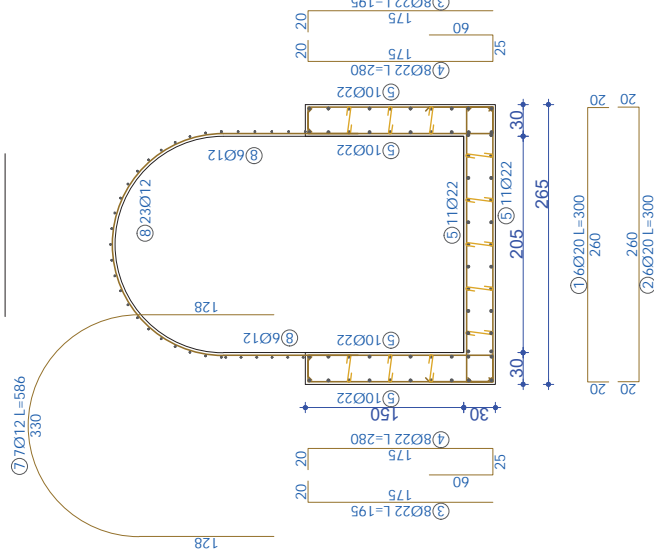


TABELA E SPECIFIKIMIT TE ARMATURES					
Nr.	FORMA DHE PERMASAT [cm]	Ø [mm]	L [m]	n [copje]	L (Totale) [m]
Seksioni reduktuar (1 pcs.)					
1		20	3.00	6	18.00
2		20	3.00	6	18.00
3		22	1.95	16	31.20
4		22	2.80	16	44.80
5		22	1.00	62	62.00
6		10	0.46	11	5.06
7		12	5.86	7	41.02
8		12	1.00	35	35.00
TABELA PËRMBLEDHJESE E ARMATURES (Seksioni reduktuar)					
Ø [mm]	L [m]	PESHA NJESI [kg/ml]		PESHA [kg]	GA
		L	n		
10	5.06	0.62	0.62	3.12	
12	76.02	0.89	0.89	67.51	
20	36.00	2.47	2.47	88.78	
22	138.00	2.98	2.98	411.79	
Total				571.20	

KORPORATA ELEKTROENERGJITIKE SHQIPTARE  
NJESIA PRODHUESE HEC FIERZE

PROJEKT ZBATIM

2022

GRUPI I PROJEKTIMIT

Ing. ENTELA CANO Ing. DRITAN BUZI Ing. THANAS CARKA  
Ing. MEFAIL HALILAJ Ing. VALENTINA HOXHA Ark. PAQSOR KAJMAKU

"A & E ENGINEERING"  
sh.p.k

Adresa: Rr. "ISLAM ALLA"  
Mob: ++355 (0)69 2079981  
Mob: ++355 (0)69 2079982

REHABILITIMI I GALERISE SE CIMENTIMIT NE KUOTEN 296 MMND NE SHPATULLEN E MAJTE TE DIGES FIERZE

TABELA E HEKURIT-SEKSIONI TIP

FL. K. 06

1:50



# PRERJA 1-1 Shk. 1:50

## (balli fundore i galerise)

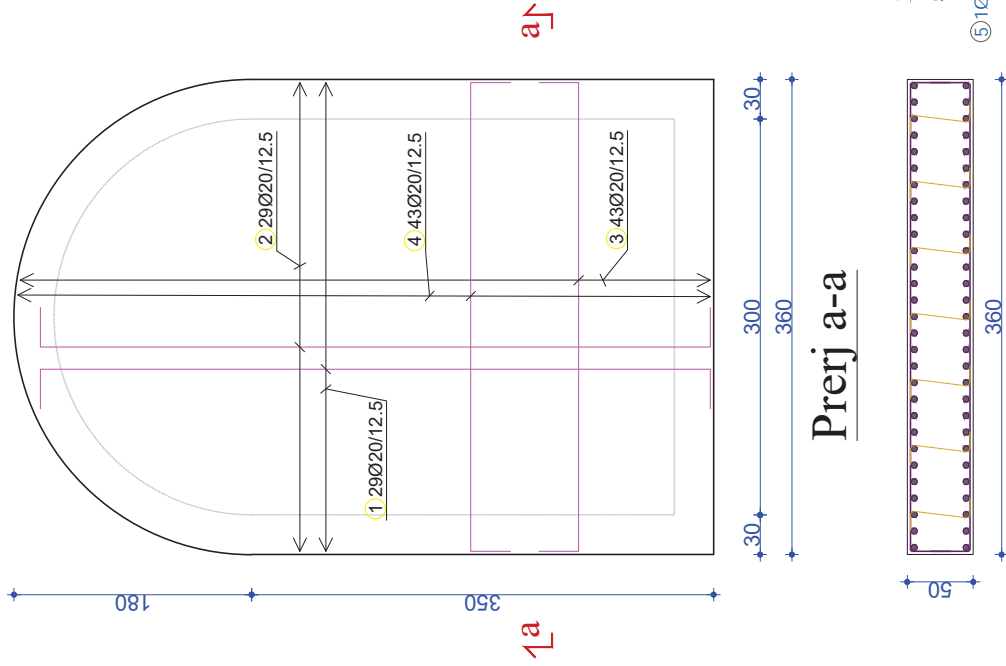


TABELA E SPECIFIKIMIT TE ARMATURES						
Nr.	FORMA DHE PERMASAT [cm]	Ø	L [m]	L <sup>n</sup> [cople]	L (Totale) [m]	
Balli i Tynelit (1 pes.)						
1		20	5.68	29	164.72	
2		20	5.68	29	164.72	
3		20	4.15	43	178.45	
4		20	4.15	43	178.45	
5		12	0.75	7	5.25	
TABELA PERMBLEDHESE E ARMATURES (Balli i Tynelit)						
Ø [mm]	L [m]	PESHA NJESI [kg/ml]	GA		PESHA [kg]	
12	5.25	0.89			4.66	
20	686.34	2.47			1692.51	
Total					1697.18	

KORPORATA ELEKTROENERGJITIKE SHQIPTARE  
NJESIA PRODHUSE HEC FIERZE

PROJEKT ZBATIM

2022

GRUPI I PROJEKTIMIT

Ing. ENTELA CANO Ing. DRITAN BUZI Ing. THANAS CARKA  
Ing. MEFAIL HALILAJ Ing. VALENTINA HOXHA Ark. PAQSOR KAJMAKU



"A & ENGINEERING"  
sh.p.k

Adresa: Rr. "ISLAM ALLA"  
Mob: ++355 (0)69 207/9981  
Mob: ++355 (0)69 207/9982

REHABILITIMI I GALERISE SE CIMENTIMIT NE KUOTEN 236 MMND NE SHPATULLEN E MAJTE TE DIGES FIERZE

ARMIMI I BALLIT FUNDOR TE GALERISE

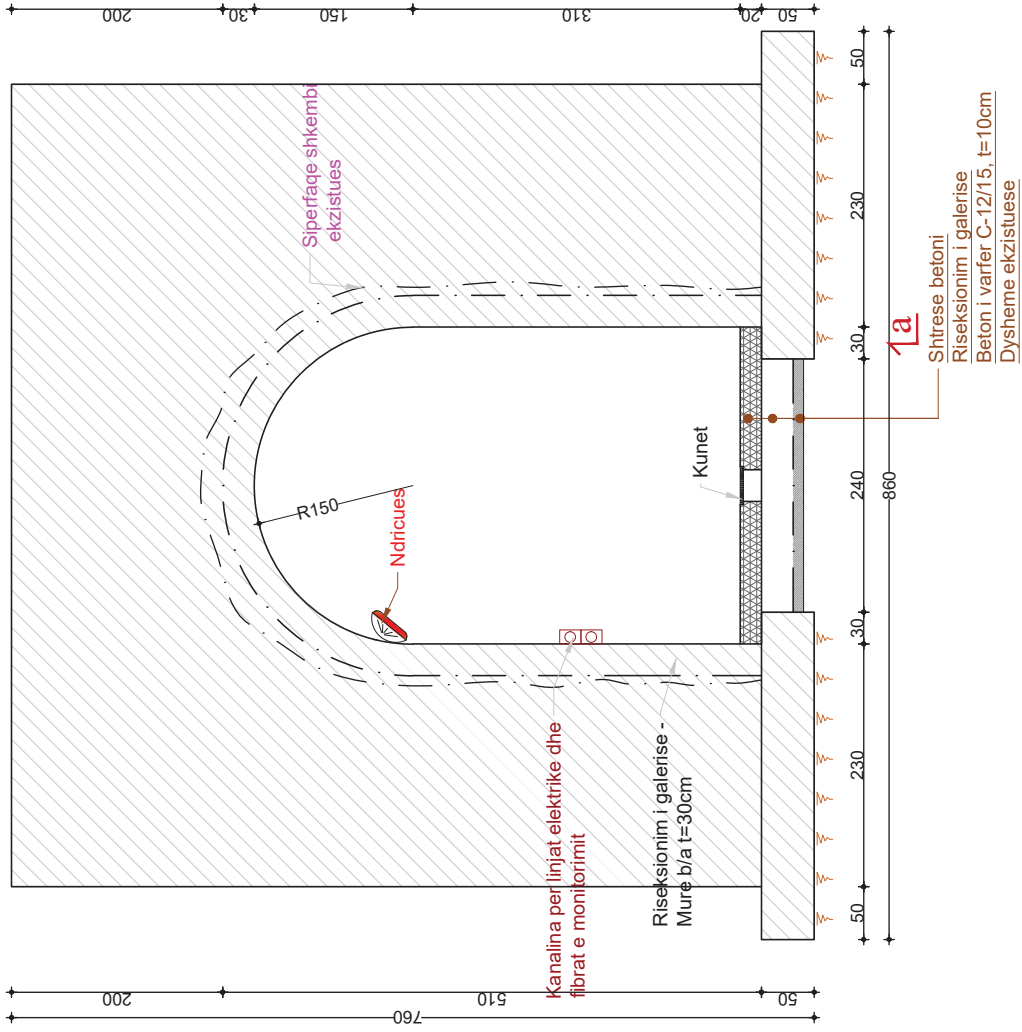
FL. K.07

SHKALLA 1:50

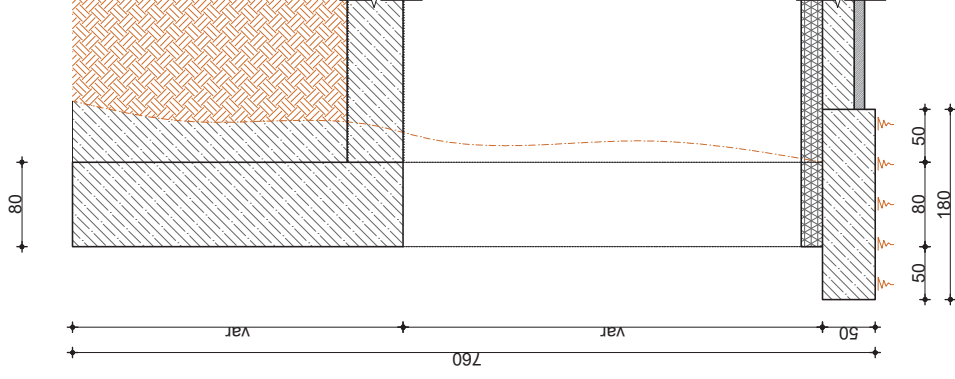
# SEKSIONI TERTHOR PORTALI

Shk. 1:50

760  $\sqrt{a}$



## Prej a-a



KORPORATA ELEKTROENERGJIKE SHQIPTARE NJESIA PRODHUSE HEC FIERZE	PROJEKT ZBATIM 2022	GRUPI I PROJEKTIMIT		"A & E ENGINEERING" sh.p.k Adresa: Rr. "ISLAM ALLA" Mob: ++355 (0)69 207/9981 Mob: ++355 (0)69 207/9982	REHABILITIMI I GALERISE SE CIMENTIMIT NE KUOTEN 296 MMND NE SHPATULLEN E MAJTE TE DIGES FIERZE	SHKALLA
		Ing. ENTELA CANO Ing. MEFAIL HALILAJ	Ing. DRITAN BUZI Ing. VALENTINA HOXHA		Ing. THANAS CARKA Atk. PAQSOR KAJMAKU	SEKSIONI TERTHOR I PORTALIT TE HYRJES



# ARMIMI I PORTALIT

Shk. 1:50

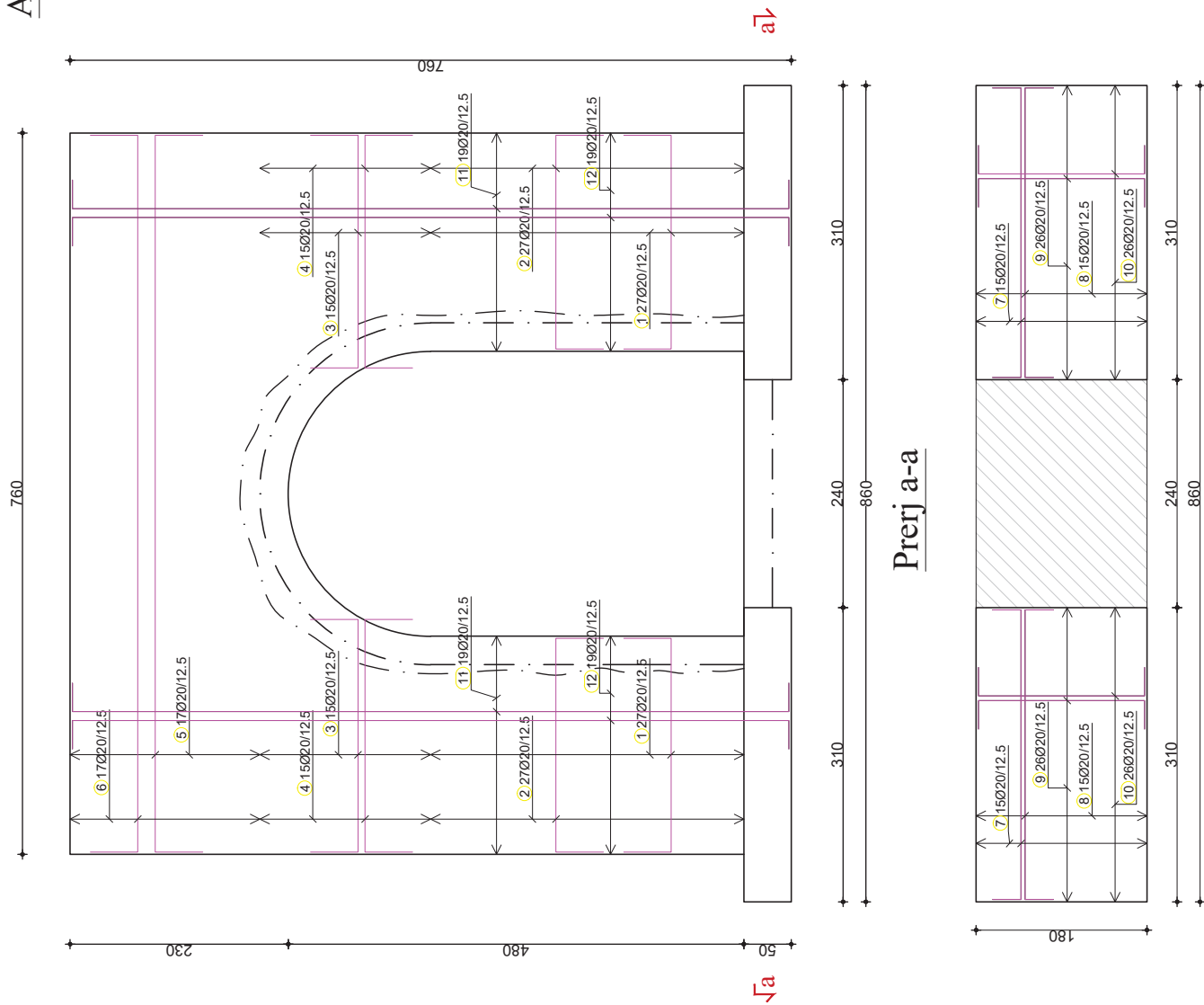


TABELA E SPECIFIKIMIT TE ARMATURES					
Nr.	FORMA DHE PERMASAT [cm]	Ø	L [m]	n [copje]	L (Totale) [m]
Portali (1 pcs.)					
1		20	3.25	54	175.50
2		20	3.25	54	175.50
3		20	3.45	30	103.50
4		20	3.45	30	103.50
5		20	8.55	17	145.35
6		20	8.55	17	145.35
7		20	3.65	30	109.50
8		20	3.65	30	109.50
9		20	2.35	52	122.20
10		20	2.35	52	122.20
11		20	8.15	38	309.70
12		20	8.15	38	309.70
TABELA PERMBLEDHESHE E ARMATURES (Portali)					PESHA [kg]
Ø [mm]	L [m]	PESHA NJESI [kg/ml]	GA		
20	1931.50	2.47			4763.08
Total					4763.08

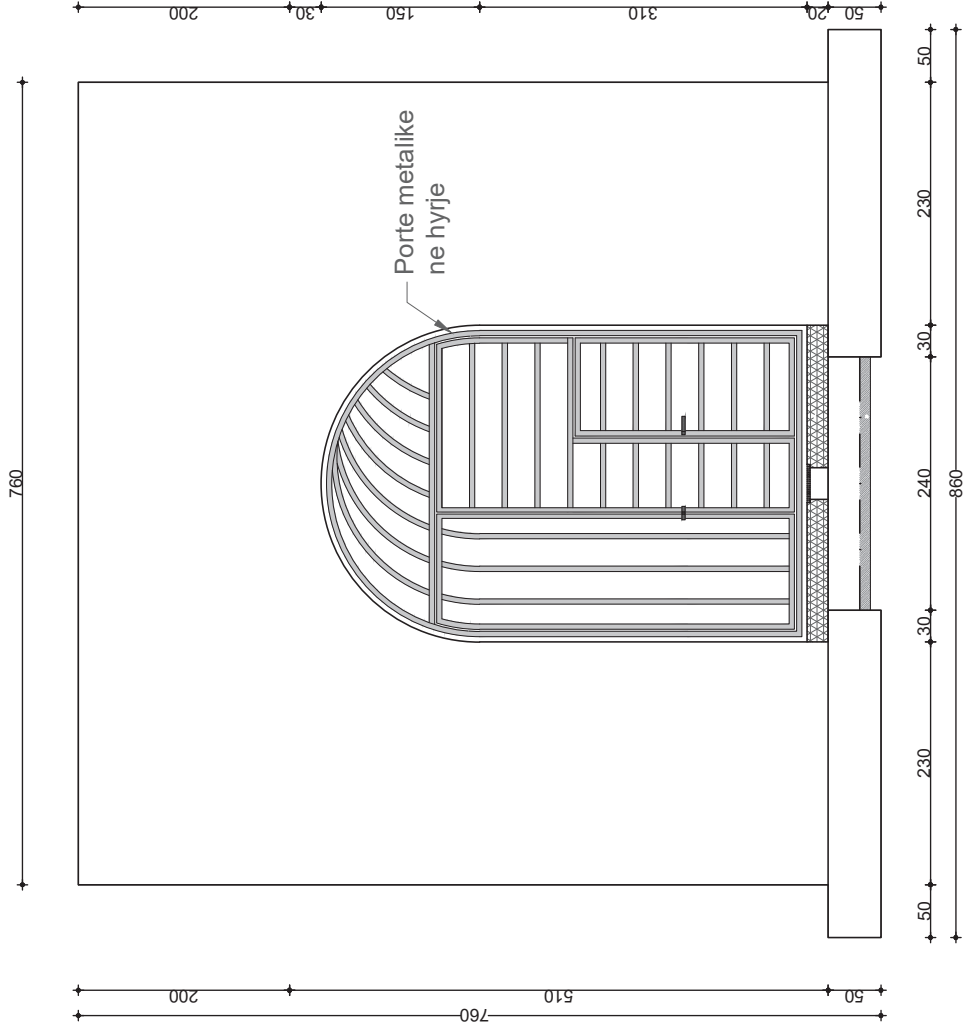
	<b>"A &amp; E ENGINEERING"</b> sh.p.k	REHABILITIMI I GALERISE SE CIMENTIMIT NE KUOTEN 296 MMND NE SHPATULLEN E MAJTE TE DIGES FIERZE	SHKALLA 1:50
	Adresa: Rr. "ISLAM ALLA" Mobe : ++355 (0)69 207/9981 Mobe : ++355 (0)69 207/9982	ARMIMI I PORTALIT FL. K.09	

<b>GRUPI I PROJEKTIMIT</b>
Ing. ENTELA CANO    Ing. DRITAN BUZI    Ing. THANAS CARKA Ing. MEFAIL HALILAJ    Ing. VALENTINA HOXHA    Ark. PAQSOR KAJMAKU

KORPORATA ELEKTROENERGJITIKE SHQIPTARE NJESIA PRODHUSE HEC FIERZE	PROJEKT ZBATIM 2022
--	------------------------

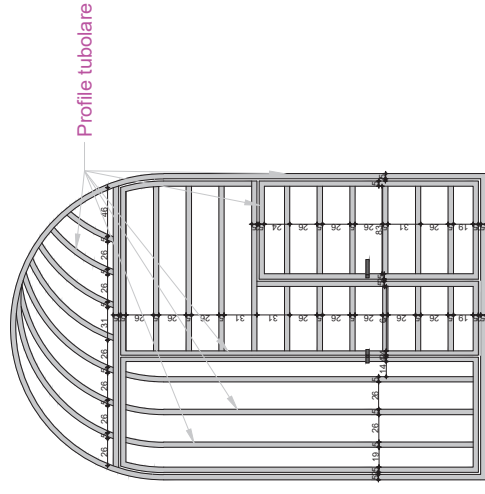
# SEKSIONI TERTHOR PORTALI

Shk. 1:50



# PERMASIMI I PORTES METALIKE

Shk. 1:50

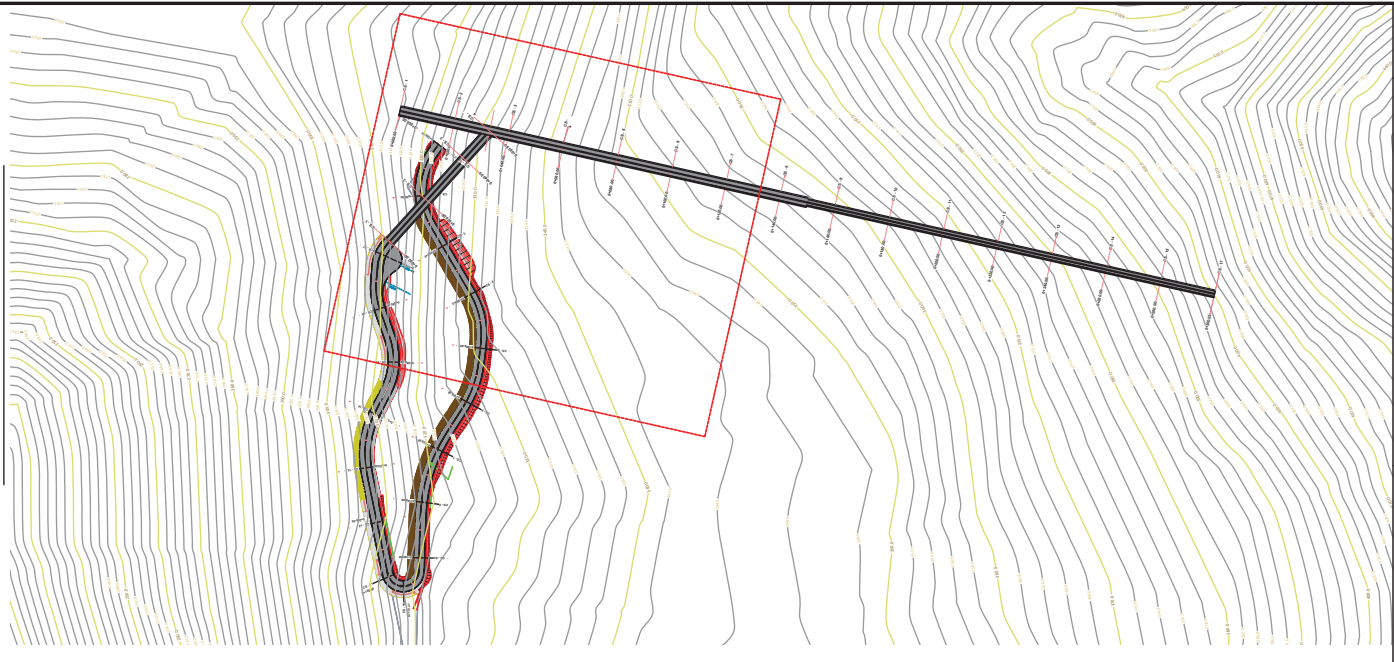
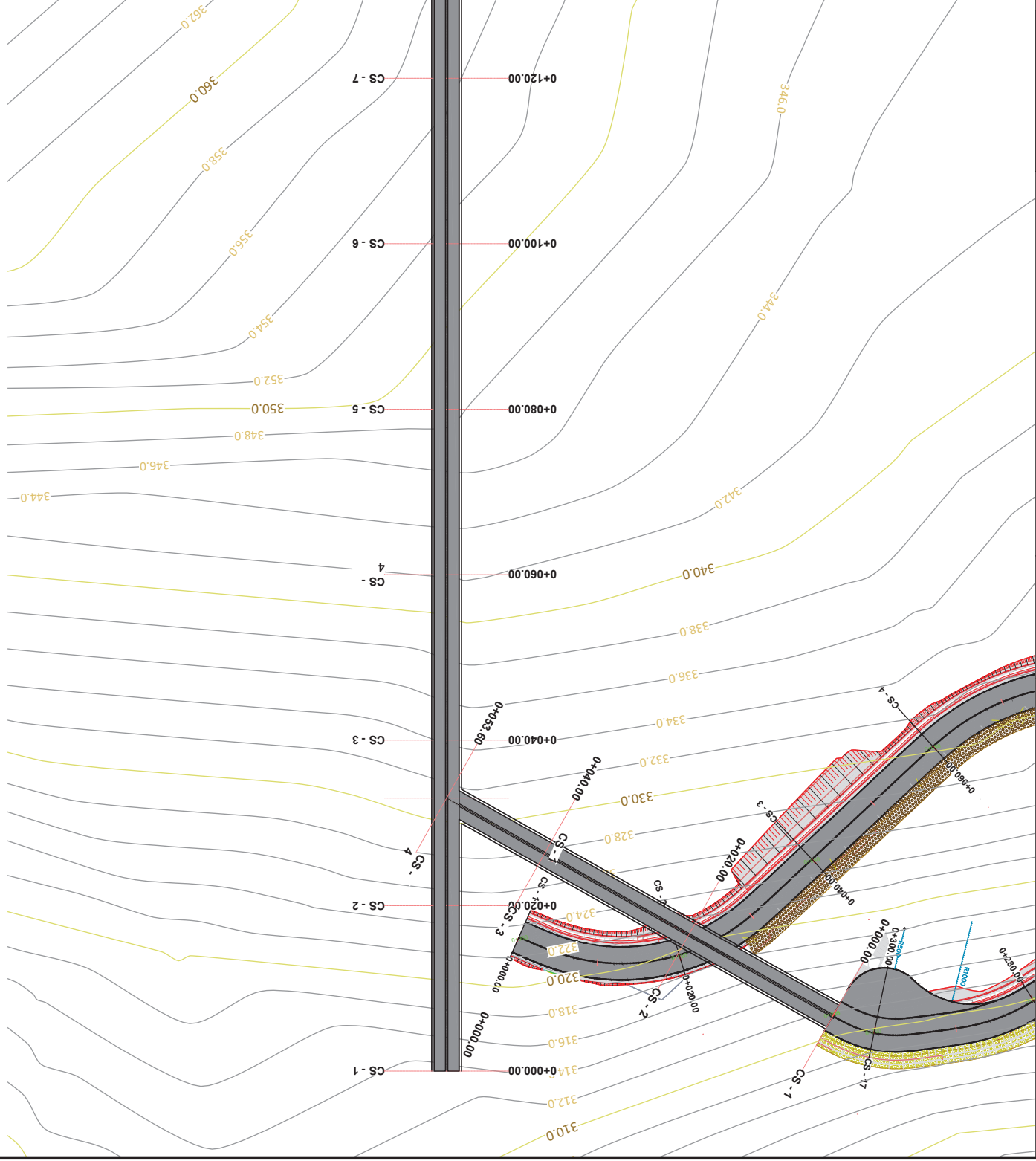


KORPORATA ELEKTROENERGJIKE SHQIPTARE NJESIA PRODHUSE HEC FIERZE	PROJEKT ZBATIM <b>2022</b>	GRUPI I PROJEKTIMIT Ing. ENTELA CANO    Ing. DRITAN BUZI    Ing. THANAS CARKA Ing. MEFAIL HALILAJ    Ing. VALENTINA HOXHA    Ark. PAQSOR KAJMAKU		"A & E ENGINEERING" sh.p.k Adresa: Rr. "ISLAM ALLA" Mobi : ++355 (0)69 207/9981 Mobi : ++355 (0)69 207/9982	REHABILITIMI I GALERISE SE CIMENTIMIT NE KUOTEN 296 MMND NE SHPATULLEN E MAJTE TE DIGES FIERZE	SHKALLA
		DETAJE PER PORTEN METALIKE TE PORTALI	FL. K. 10		1:50	



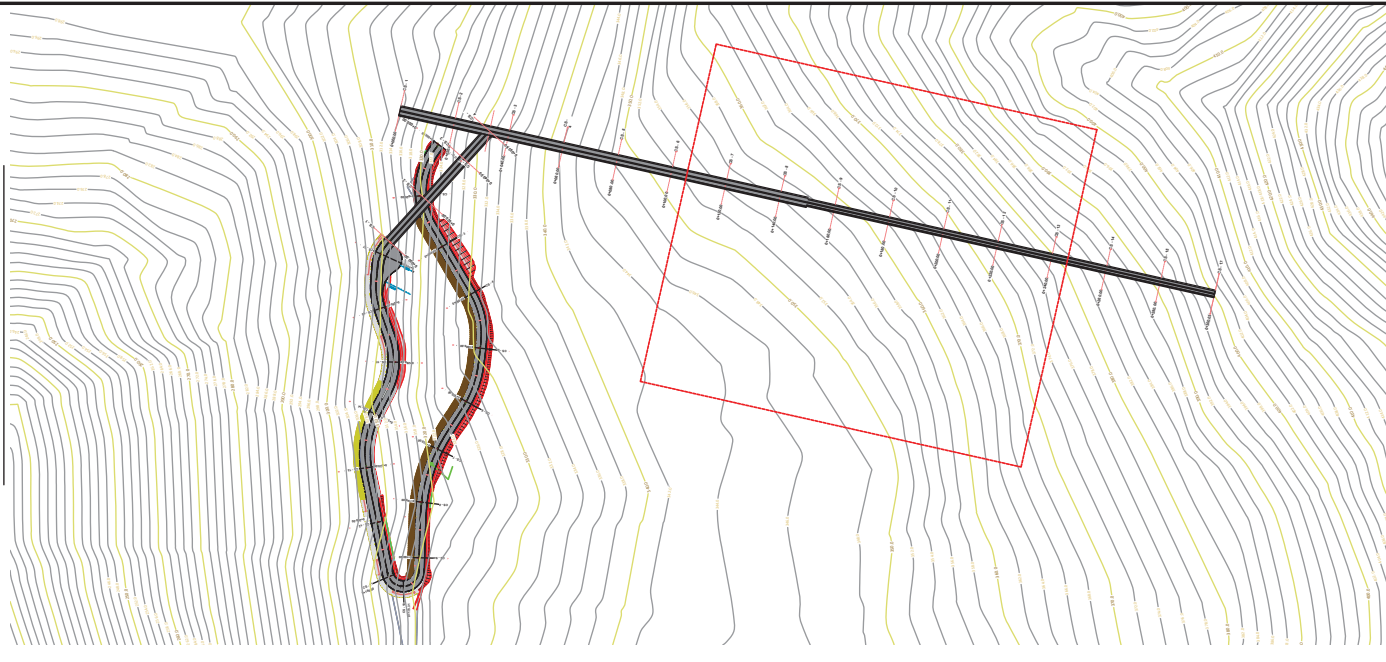
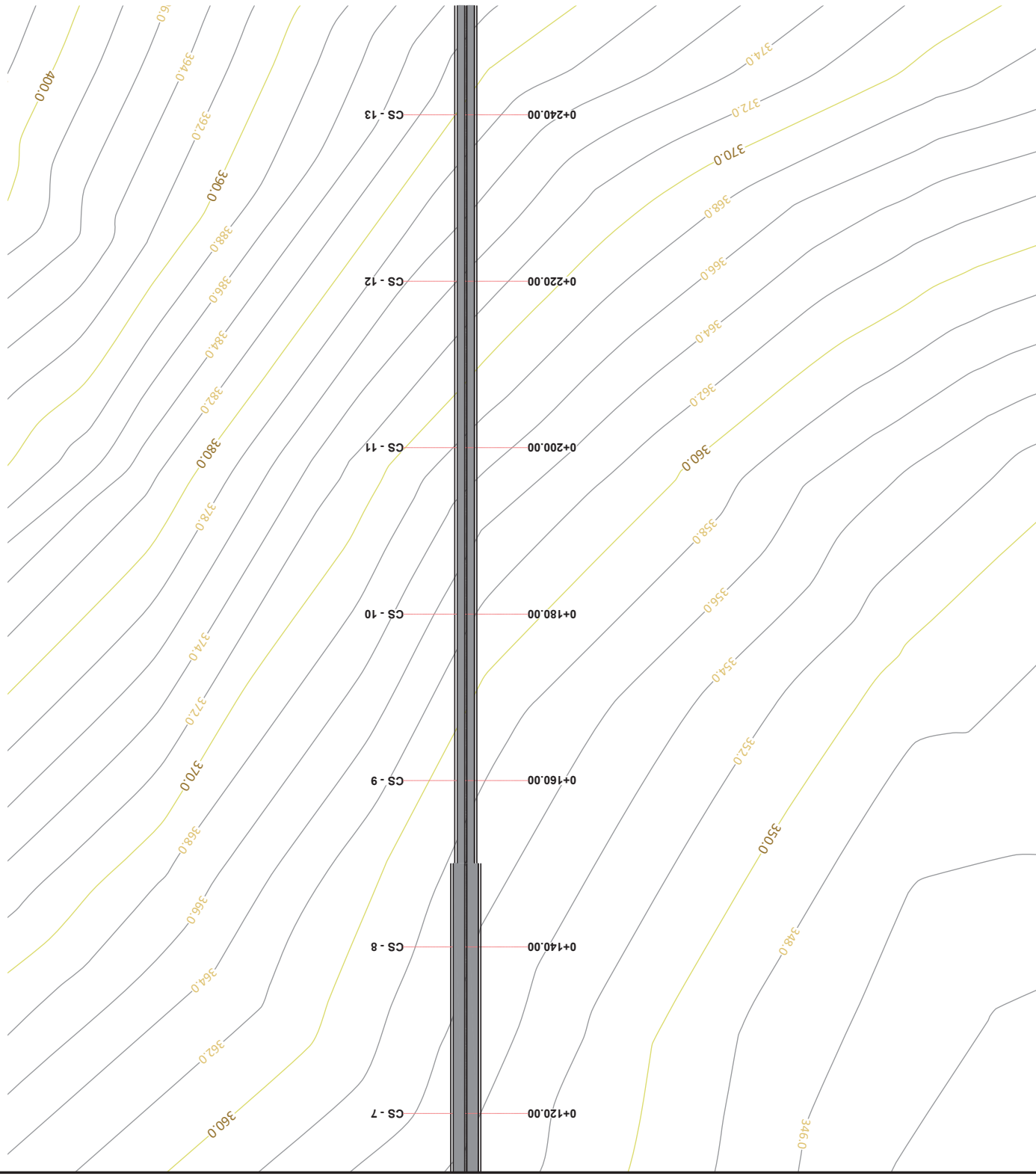
# PLANIMETRIA E GALERISE

PLANVENDOSJE SHK. 1:200



# PLANIMETRIA E GALERISE

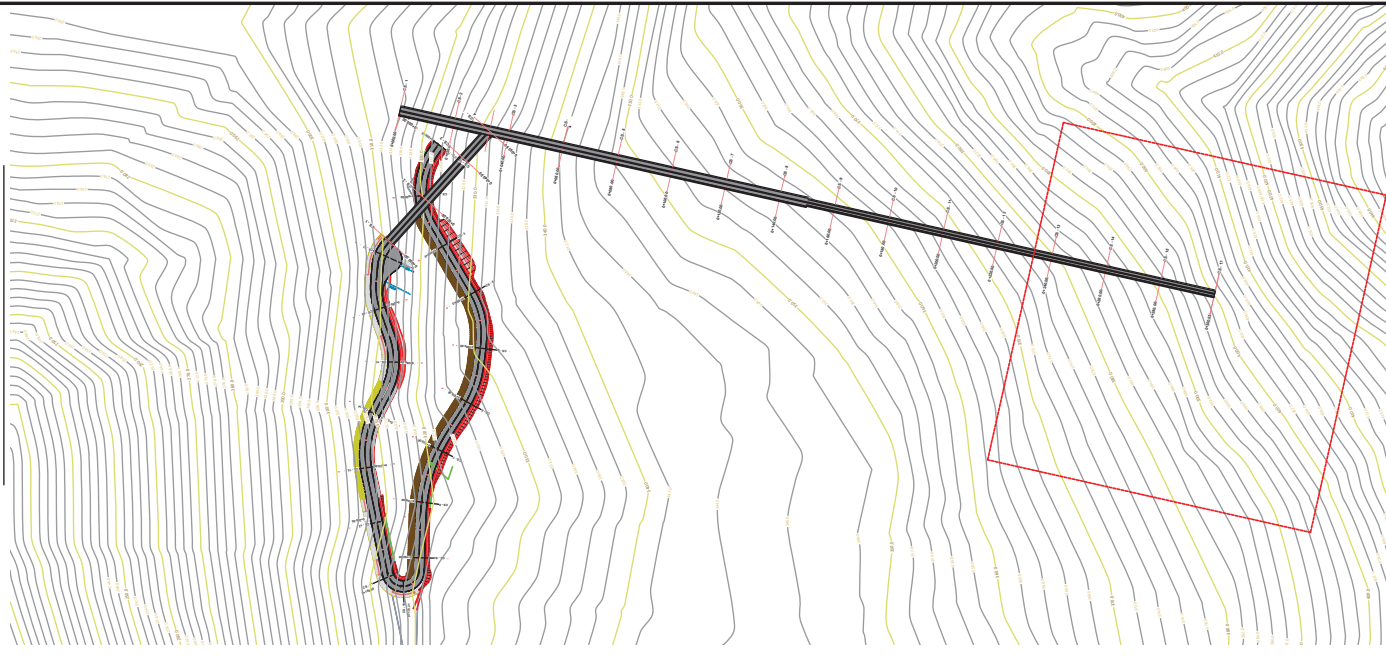
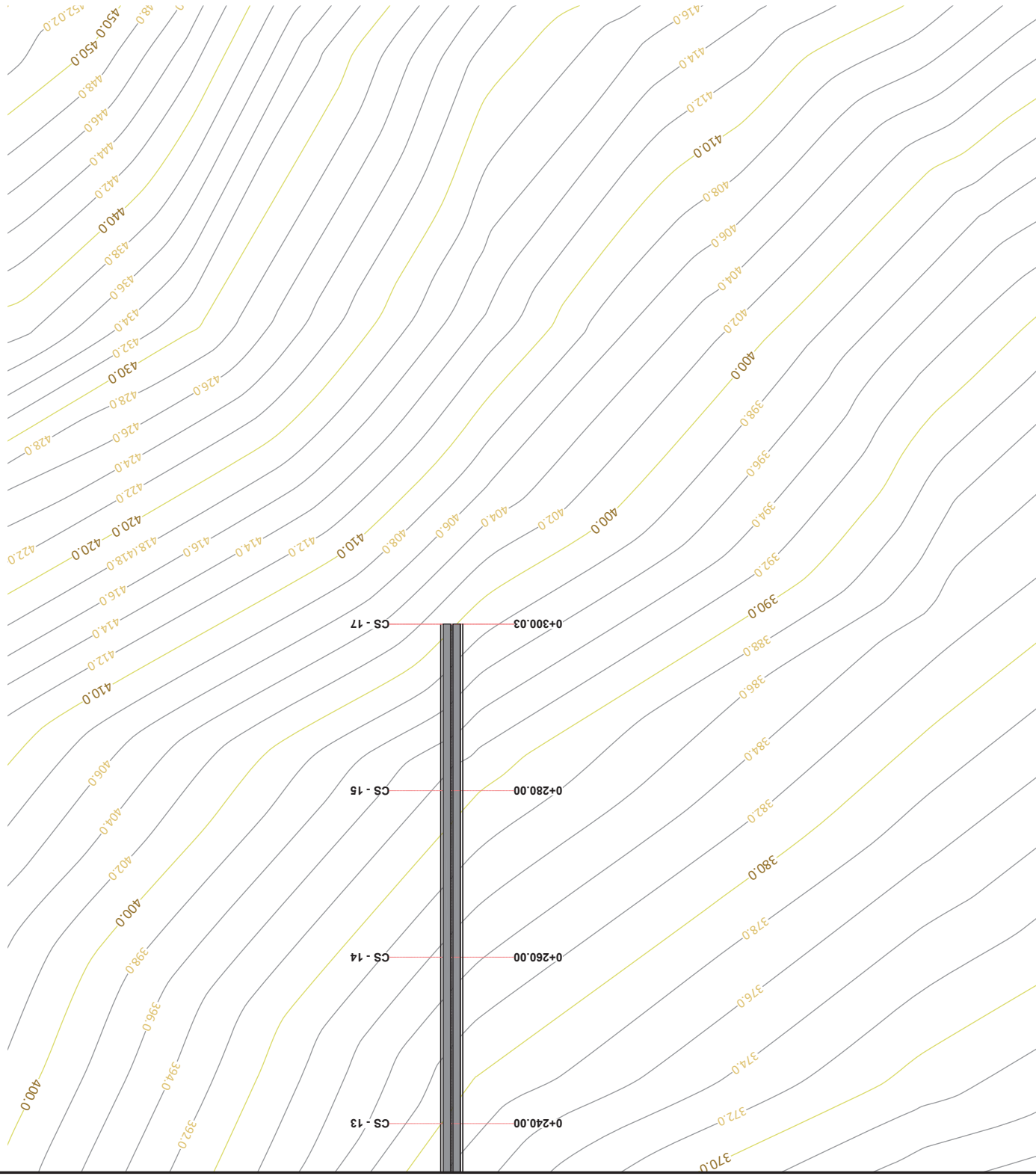
PLANVENDOSJE SHK. 1:200





# PLANIMETRIA E GALERISE

PLANVENDOSJE SHK. 1:200



KORPORATA ELEKTROENERGJITIKE SHQIPTARE  
NJESIA PRODHUESE HEC FIERZE

PROJEKT ZBATIM  
2022

GRUPI I PROJEKTIMIT  
Ing. ENTEJLA CANO  
Ing. DRITAN BUZI  
Ing. MEFAIL HALILAJ  
Ing. THANAS CARKA  
Ing. VALENTINA HOXHA  
Ark. PAQSOR KAJMAKU



"A & E ENGINEERING"  
sh.p.k  
Adresa: Rr. "ISLAMALLA"  
Mob: ++355 (0)69 2079981  
Mob: ++355 (0)69 2079982

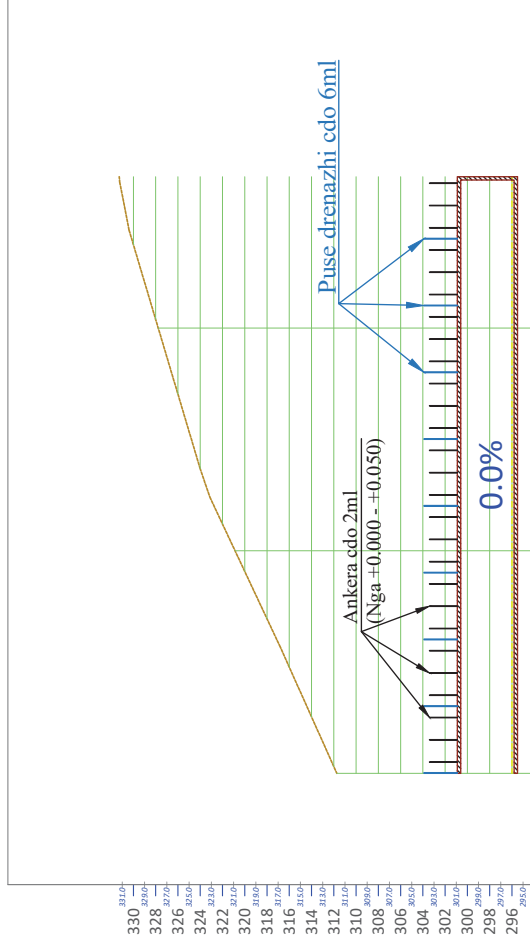
REHABILITIMI I GALERISE SE CONCRETIMIT  
NE KUOTEN 204 NIMUNDE SHRAPULLEN E  
MAJTE TE DIGES FIERZE  
PLANIMETRIA E GALERISE

SHKALLA  
FL.  
P.L.03

1:50



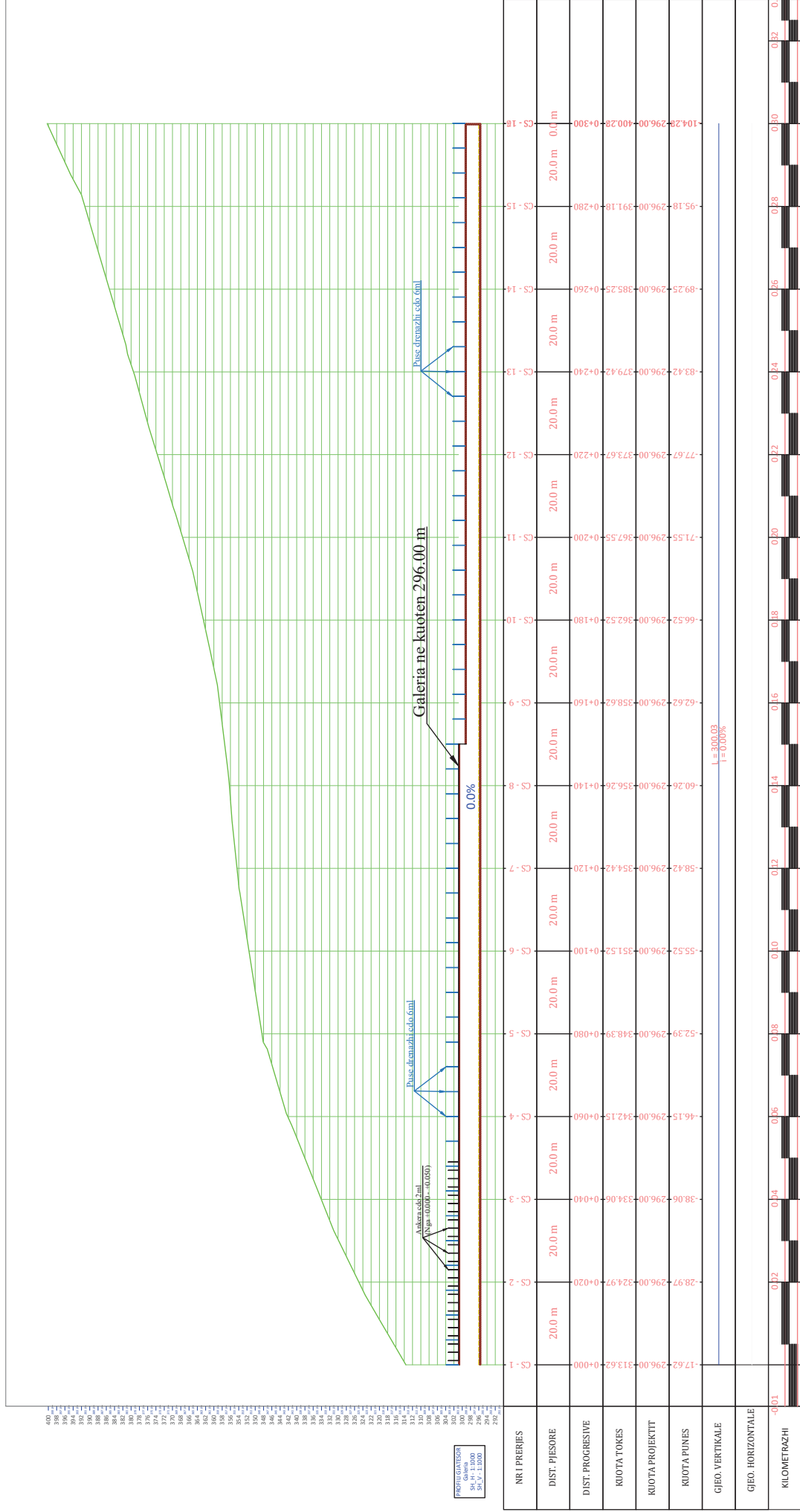
# PROFILI GJATESORE



PROFILI GJATESOR  
Aksi i Hyjtes  
SH\_H - 1:1.000  
SH\_V - 1:1.000

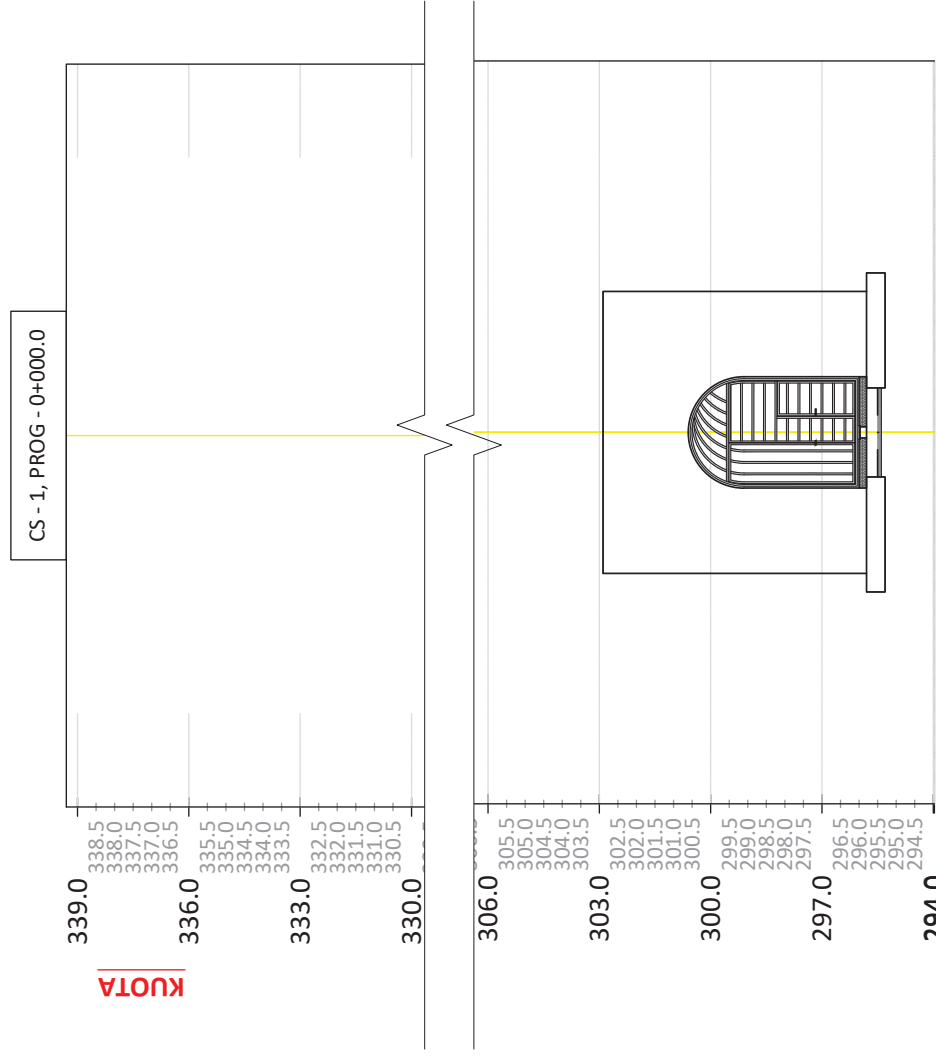
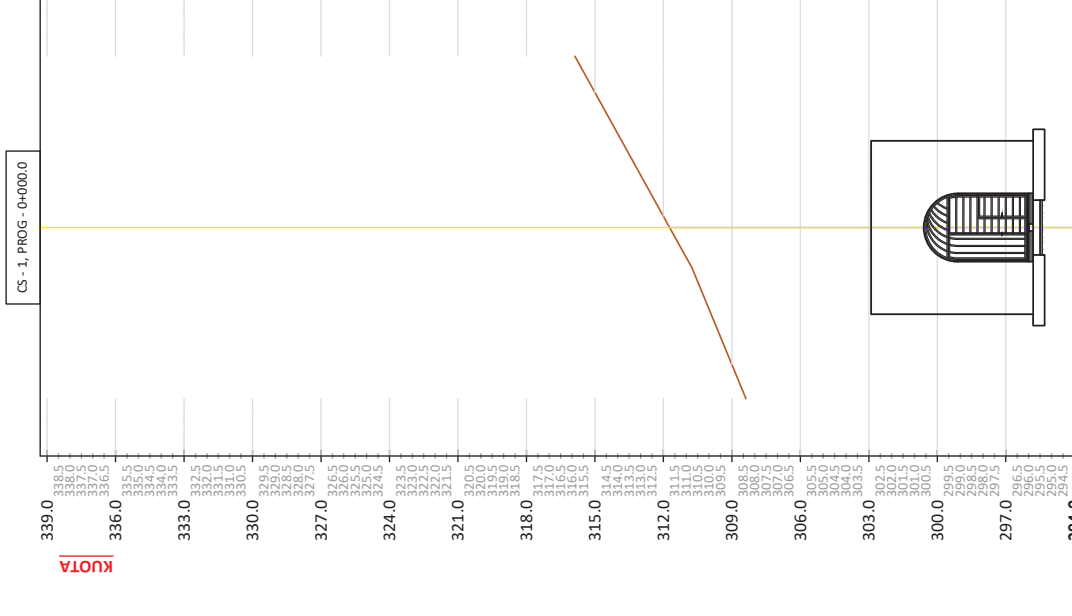
NR I PRERJES	CS - 1	CS - 2	CS - 3	CS - 4
DIST. PJESORE	20.0 m	20.0 m	13.6 m	
DIST. PROGRESIVE	0+000	0+020	0+040	0+054
KUOTA TOKES	311.73	320.87	327.77	331.27
KUOTA PROJEKTIT	296.00	296.00	296.00	296.00
KUOTA PUNES	-15.73	-24.87	-31.77	-35.27
GJEO. VERTIKALE		$i = 53.60$ $i = 0.00\%$		
GJEO. HORIZONTALE				
KILOMETRAZHI	-0.01	0.02	0.04	0.06
				0.07

# PROFILI GJATESORE



PROFILI GJATESORE  
SH.N.1:1000  
SH.V.1:1000

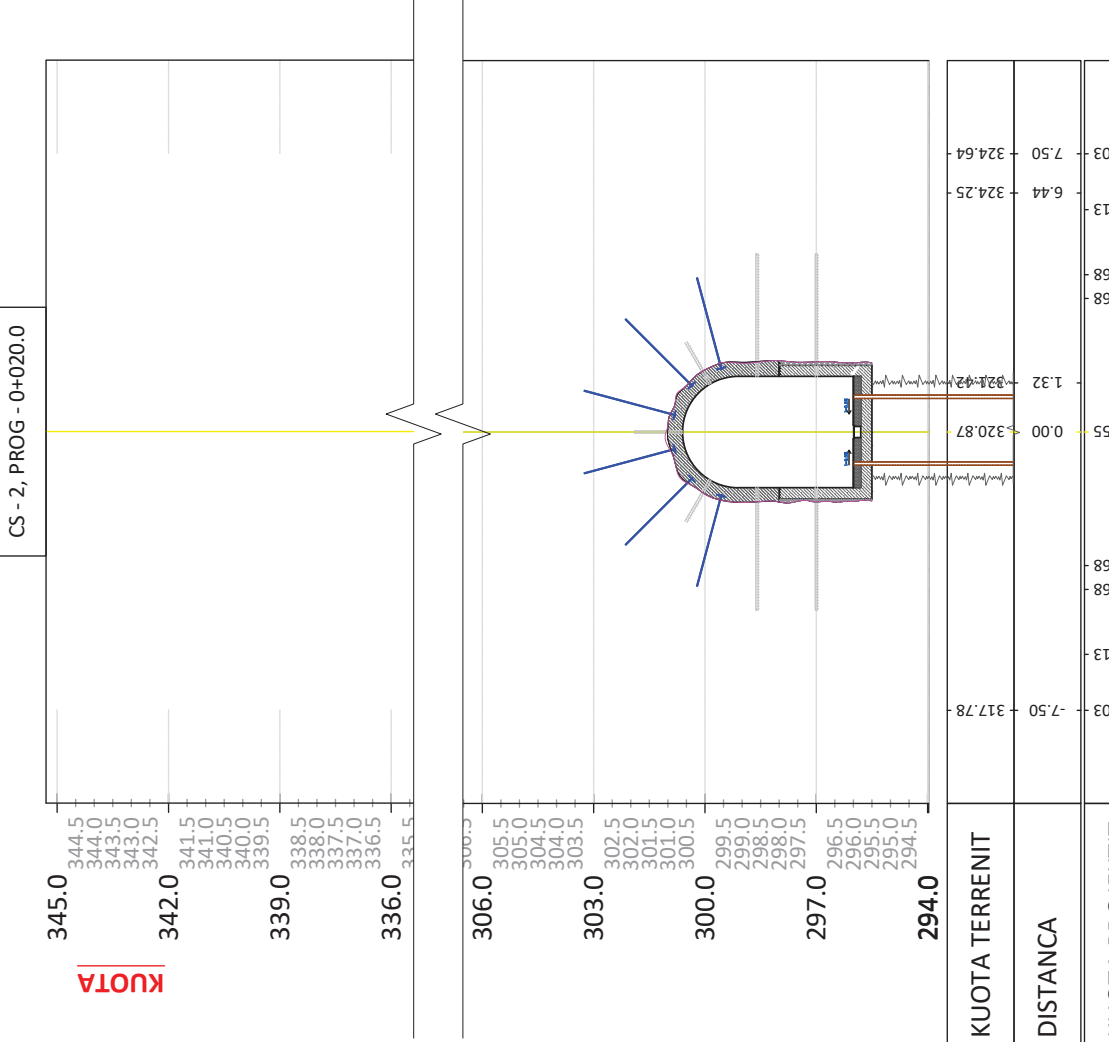
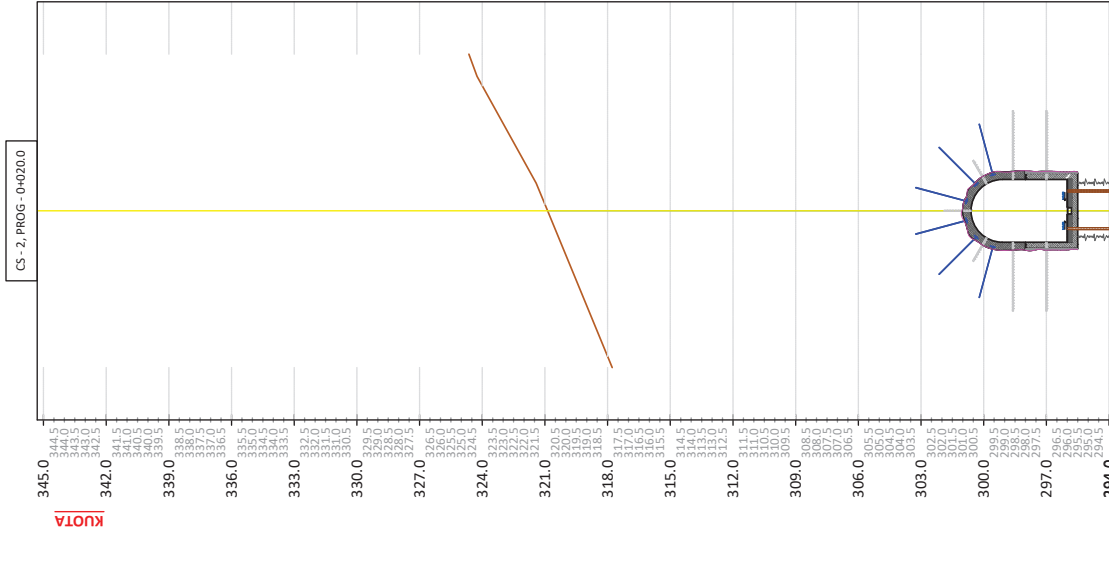
# SEKSIONE TERTHORE - AKSI HYRJES



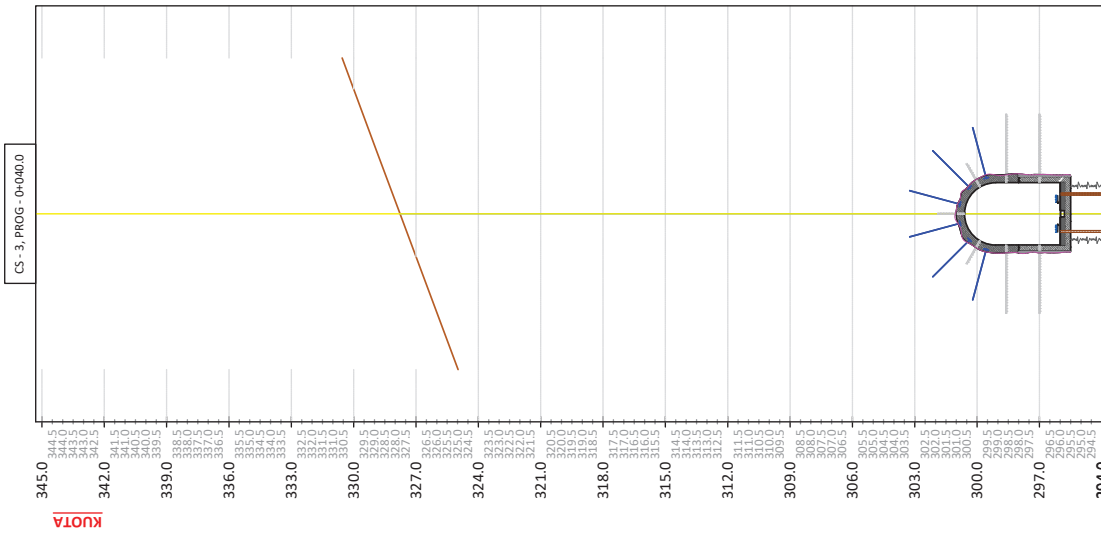
KUOTA TERRENIT	-7.50	-308.39	-1.76	-310.76	0.00	-311.73	7.50	-315.88
DISTANCA	0.00	0.00	0.00	0.00	0.00	0.00	0.00	0.00
KUOTA PROJEKTTIT	-7.5	-296.03	-1.76	-295.55	0.00	-295.48	295.68	296.03
DISTANCA	0.00	0.00	0.00	0.00	0.00	0.00	0.00	0.00
KUOTA PUNES	0.00	0.00	0.00	0.00	0.00	0.00	0.00	0.00

KUOTA TERRENIT	-7.50	-308.39	-1.76	-310.76	0.00	-311.73	7.50	-315.88
DISTANCA	0.00	0.00	0.00	0.00	0.00	0.00	0.00	0.00
KUOTA PROJEKTTIT	-7.5	-296.03	-1.76	-295.55	0.00	-295.48	295.68	296.03
DISTANCA	0.00	0.00	0.00	0.00	0.00	0.00	0.00	0.00
KUOTA PUNES	0.00	0.00	0.00	0.00	0.00	0.00	0.00	0.00

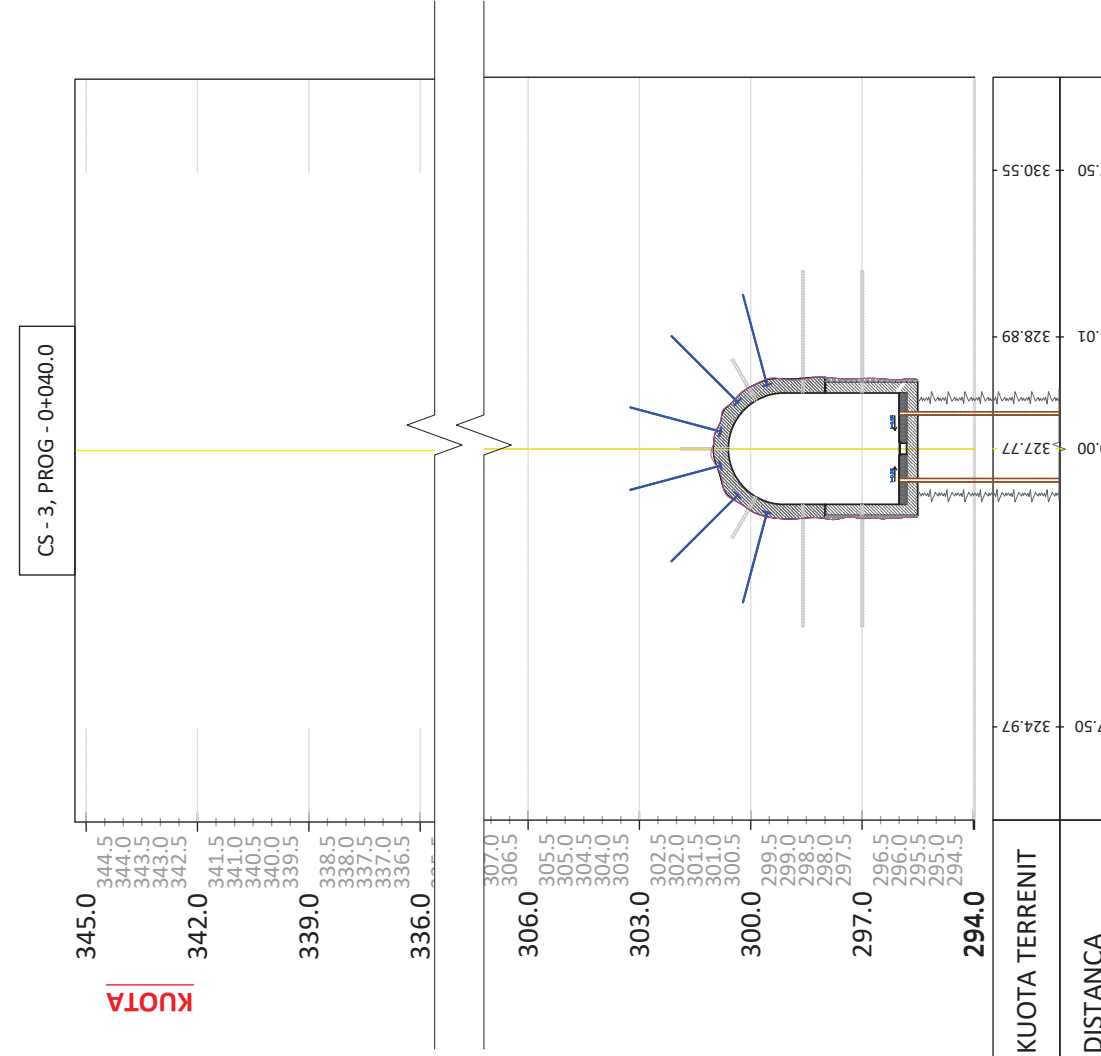
# SEKSIONE TERTHORE - AKSI HYRJES



# SEKSIONE TERTHORE - AKSI HYRJES

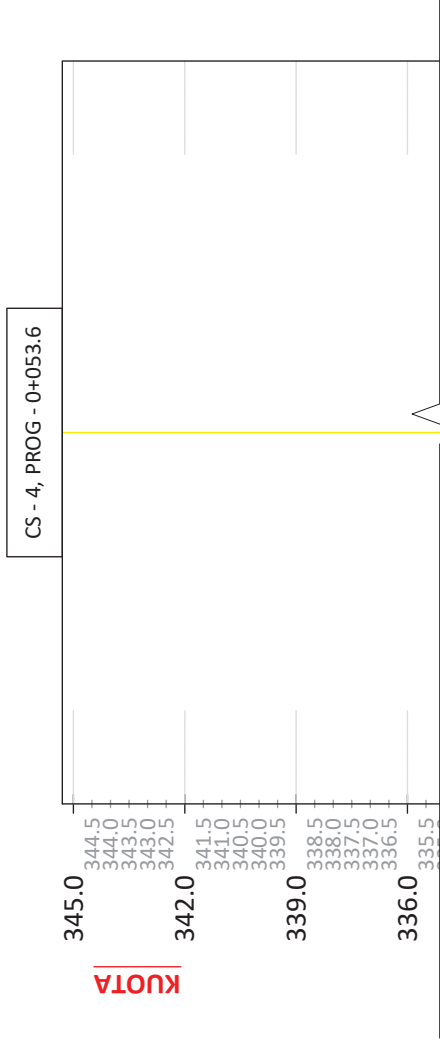
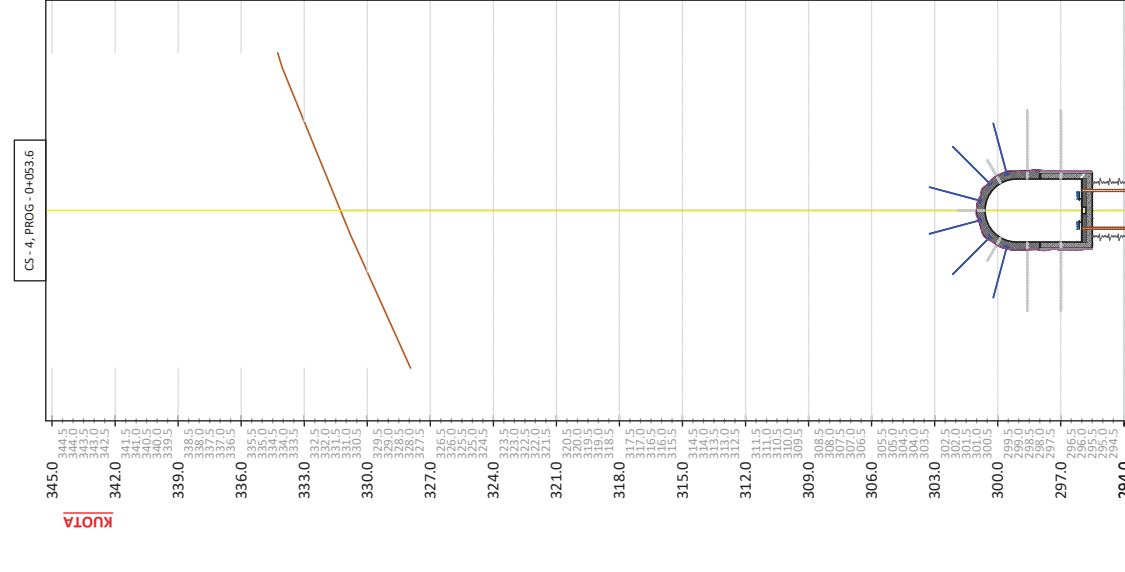


KUOTA TERRENIT	324.97	0.00	327.77	328.89	330.55
DISTANCA	-7.50	0.00	3.01	295.68	296.13
KUOTA PROJEKTIT	296.03	0.00	295.55	295.48	296.13
DISTANCA	-7.5	0.00	3.01	295.68	296.13
KUOTA PUNES	0.00	0.00	0.00	0.00	0.00



KUOTA TERRENIT	324.97	0.00	327.77	328.89	330.55
DISTANCA	-7.50	0.00	3.01	295.68	296.13
KUOTA PROJEKTIT	296.03	0.00	295.55	295.48	296.13
DISTANCA	-7.5	0.00	3.01	295.68	296.13
KUOTA PUNES	0.00	0.00	0.00	0.00	0.00

# SEKSIONE TERTHORE - AKSI HYRJES

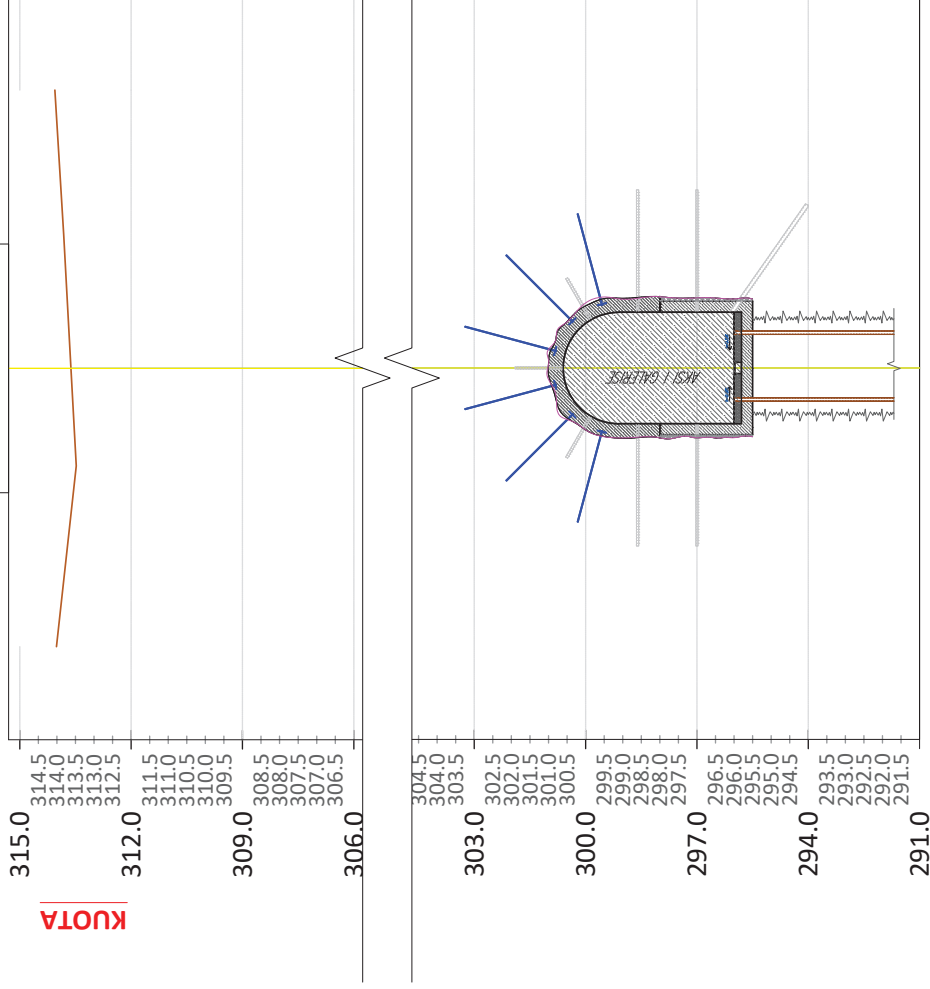


KUOTA TERRENIT	0.00	0.00	0.00	0.00
DISTANCA	7.5	6.78	296.13	295.68
KUOTA PROJEKTTI	0.00	0.00	295.55	295.68
DISTANCA	0.00	-1.15	-7.5	-296.03
KUOTA PUNES	0.00	-7.5	-296.03	-327.94

KUOTA TERRENIT	7.50	6.78	296.13	295.68	295.48	295.68	296.13	296.03	0.00
DISTANCA	7.50	6.78	296.13	295.68	295.48	295.68	296.13	296.03	0.00
KUOTA PROJEKTTI	7.50	6.78	296.13	295.68	295.48	295.68	296.13	296.03	0.00
DISTANCA	7.50	6.78	296.13	295.68	295.48	295.68	296.13	296.03	0.00
KUOTA PUNES	7.50	6.78	296.13	295.68	295.48	295.68	296.13	296.03	0.00

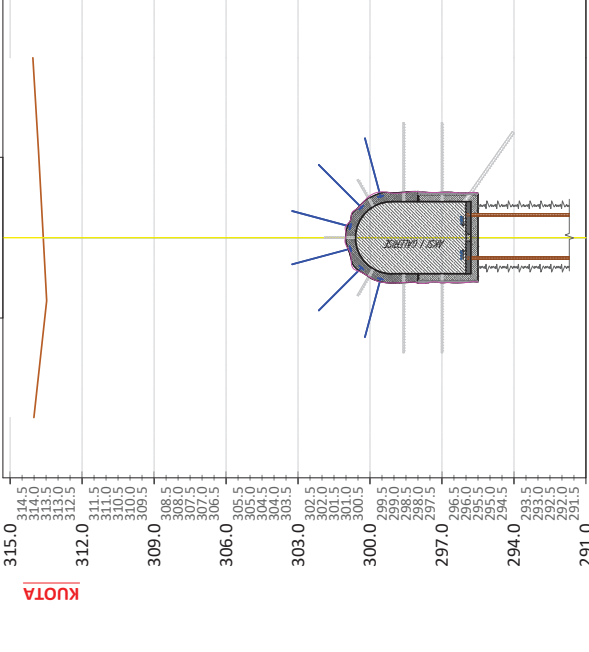
# SEKSIONE TERTHORE

CS - 1, PROG - 0+000.0



**KUOTA**

CS - 1, PROG - 0+000.0



**KUOTA**

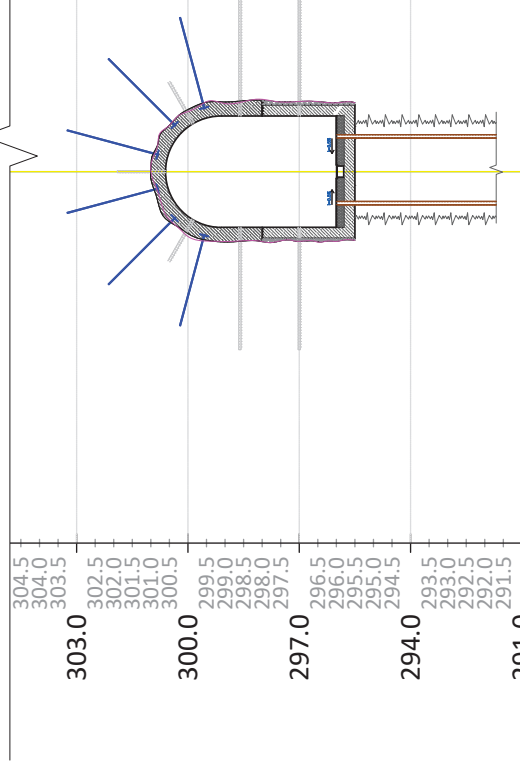
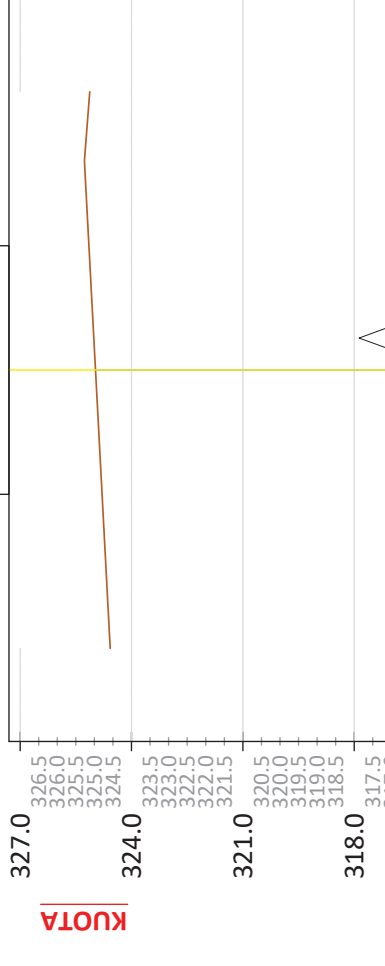
KUOTA TERRENIT	-18.03	-17.84	-18.18	-18.34	0.00	313.62	-2.63	313.48	-7.50	314.01
DISTANCA	7.50	5.99	4.24	3.60	296.00	313.82	3.60	313.82	314.05	7.50
KUOTA PROJEKTTIT										
DISTANCA										
KUOTA PUNES										

KUOTA TERRENIT	-18.03	-17.84	-18.18	-18.34	0.00	313.62	-2.63	313.48	-7.50	314.01
DISTANCA	7.50	5.99	4.24	3.60	296.00	313.82	3.60	313.82	314.05	7.50
KUOTA PROJEKTTIT										
DISTANCA										
KUOTA PUNES										



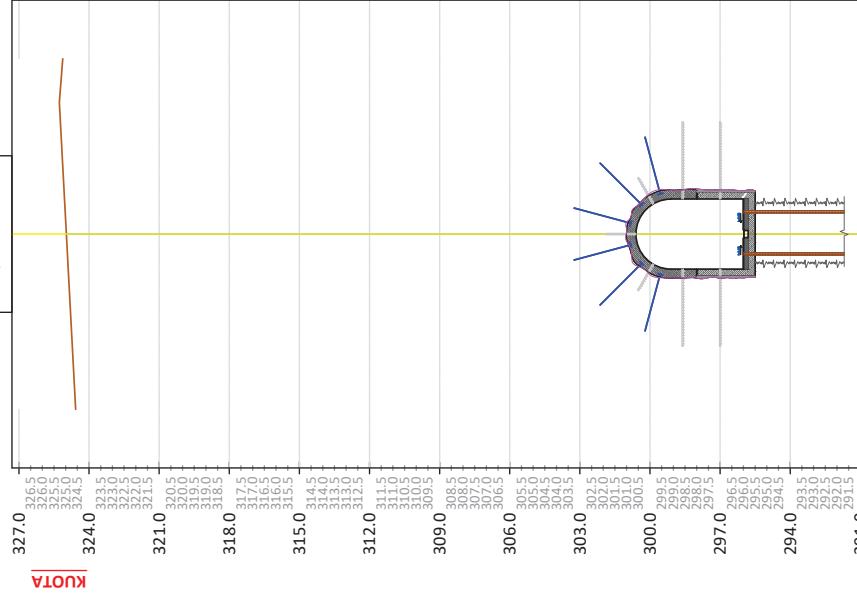
# SEKSIONE TERTHORE

CS - 2, PROG - 0+020.0



KUOTA TERRENIT	-7.50	-341.85	-45.82	-7.5	-45.78	-5.99	-4.24	-46.31	-46.33	-3.60	0.00	296.00	0.00	-46.60	1.58	342.22	342.14	4.23	341.86	7.50	-341.86	
DISTANCA																						
KUOTA PROJEKTTIT																						
DISTANCA																						
KUOTA PUNES																						

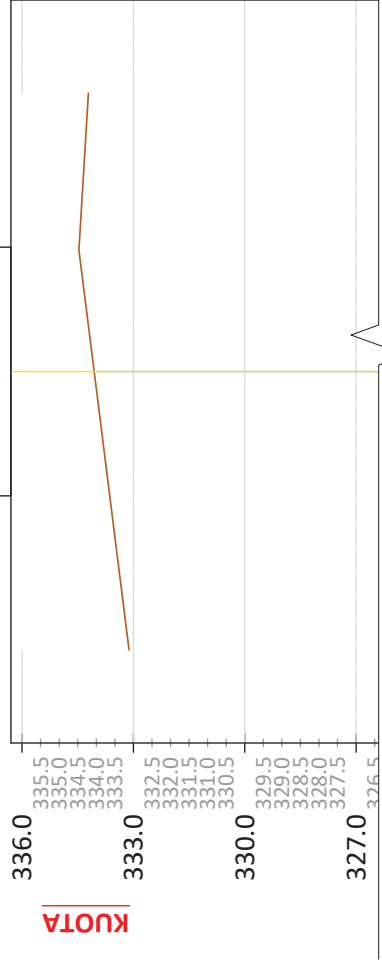
CS - 2, PROG - 0+020.0



KUOTA TERRENIT	-7.50	-324.57	-28.55	-7.5	-28.53	-5.99	-4.24	-29.07	-29.10	-3.60	0.00	296.00	0.00	-29.42	-324.97	324.97	5.64	325.27	7.50	-325.13	
DISTANCA																					
KUOTA PROJEKTTIT																					
DISTANCA																					
KUOTA PUNES																					

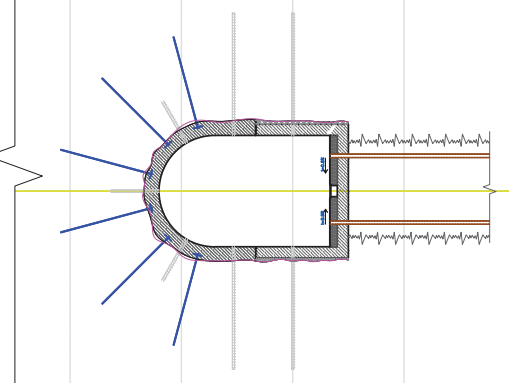
# SEKSIONE TERTHORE

CS - 3, PROG - 0+040.0



**KUOTA**

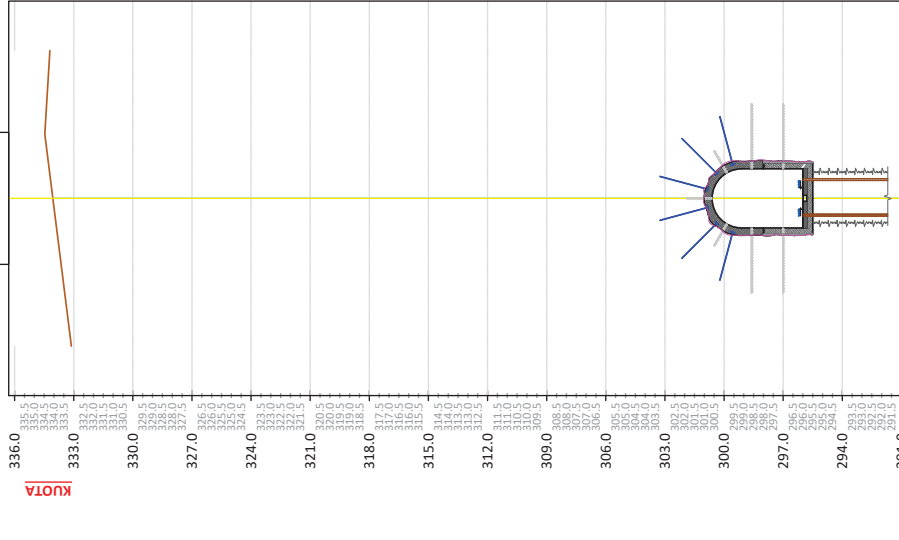
- 336.0
- 335.5
- 335.0
- 334.5
- 334.0
- 333.5
- 333.0
- 332.5
- 332.0
- 331.5
- 331.0
- 330.5
- 330.0
- 329.5
- 329.0
- 328.5
- 328.0
- 327.5
- 327.0
- 326.5



- 304.0
- 303.5
- 303.0
- 302.5
- 302.0
- 301.5
- 301.0
- 300.5
- 300.0
- 299.5
- 299.0
- 298.5
- 298.0
- 297.5
- 297.0
- 296.5
- 296.0
- 295.5
- 295.0
- 294.5
- 294.0
- 293.5
- 293.0
- 292.5
- 292.0
- 291.5

KUOTA TERRENIT	333.12	334.06	334.47	334.21
DISTANCA	-7.50	0.00	3.27	7.50
KUOTA PROJEKTIT	-7.50	0.00	296.00	
DISTANCA	-7.50	0.00	3.60	7.50
KUOTA PUNES	-37.09	-37.18	-37.85	-38.19

CS - 3, PROG - 0+040.0



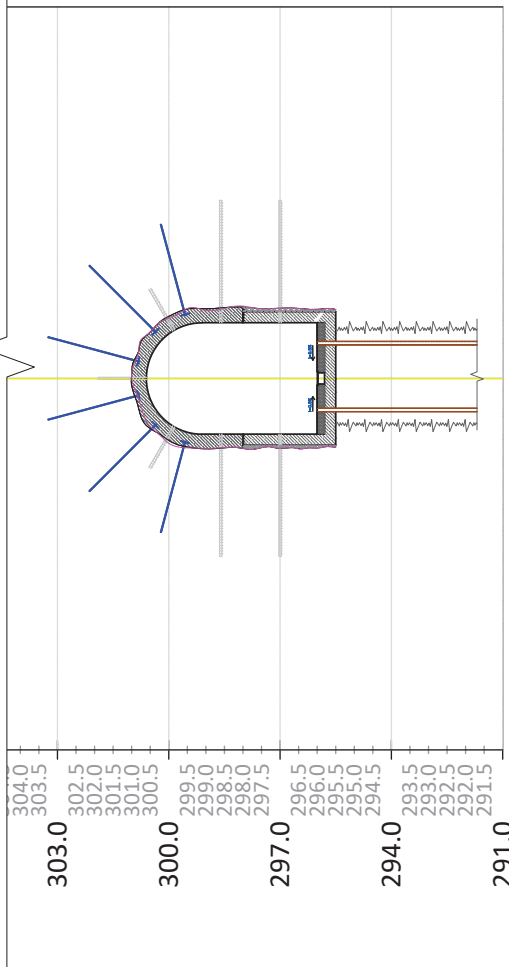
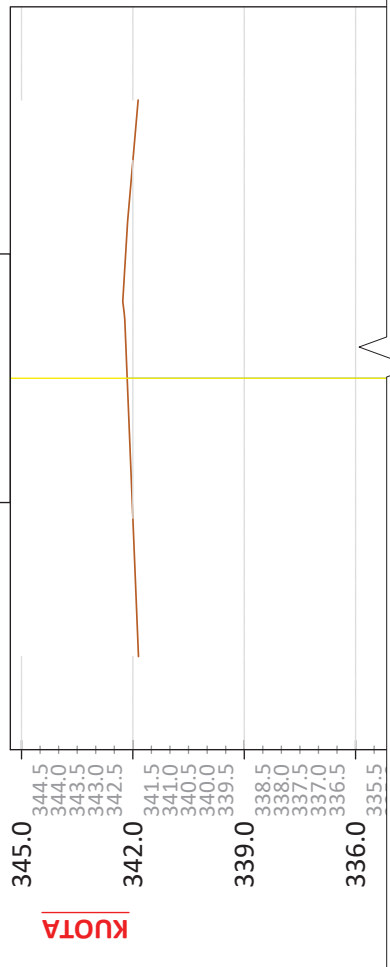
**KUOTA**

- 336.0
- 335.5
- 335.0
- 334.5
- 334.0
- 333.5
- 333.0
- 332.5
- 332.0
- 331.5
- 331.0
- 330.5
- 330.0
- 329.5
- 329.0
- 328.5
- 328.0
- 327.5
- 327.0
- 326.5
- 326.0
- 325.5
- 325.0
- 324.5
- 324.0
- 323.5
- 323.0
- 322.5
- 322.0
- 321.5
- 321.0
- 320.5
- 320.0
- 319.5
- 319.0
- 318.5
- 318.0
- 317.5
- 317.0
- 316.5
- 316.0
- 315.5
- 315.0
- 314.5
- 314.0
- 313.5
- 313.0
- 312.5
- 312.0
- 311.5
- 311.0
- 310.5
- 310.0
- 309.5
- 309.0
- 308.5
- 308.0
- 307.5
- 307.0
- 306.5
- 306.0
- 305.5
- 305.0
- 304.5
- 304.0
- 303.5
- 303.0
- 302.5
- 302.0
- 301.5
- 301.0
- 300.5
- 300.0
- 299.5
- 299.0
- 298.5
- 298.0
- 297.5
- 297.0
- 296.5
- 296.0
- 295.5
- 295.0
- 294.5
- 294.0
- 293.5
- 293.0
- 292.5
- 292.0
- 291.5
- 291.0

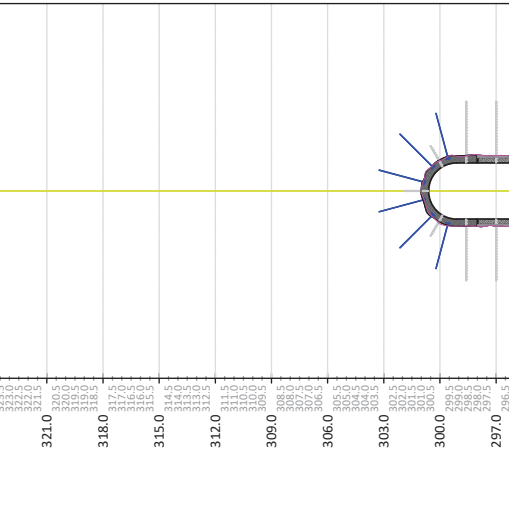
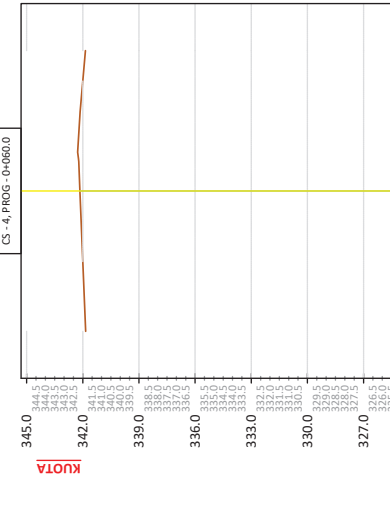
KUOTA TERRENIT	333.12	334.06	334.47	334.21
DISTANCA	-7.50	0.00	3.27	7.50
KUOTA PROJEKTIT	-7.50	0.00	296.00	
DISTANCA	-7.50	0.00	3.60	7.50
KUOTA PUNES	-37.09	-37.18	-37.85	-38.19

# SEKSIONE TERTHORE

CS - 4, PROG - 0+060.0



KUOTA TERRENIT	-7.50	-341.85	342.15	342.22	342.14	341.86
DISTANCA			0.00	1.58	4.23	7.50
KUOTA PROJEKTTIT			296.00			
DISTANCA			0.00		3.60	7.5
KUOTA PUNES	-45.82	-45.78	-46.31	-46.70	-46.70	-45.83



KUOTA TERRENIT	-45.88	-45.86	-46.70	-46.70	-46.60	-46.31	-45.78	-45.82
DISTANCA			4.23	342.14	1.58	342.22	0.00	342.15
KUOTA PROJEKTTIT					296.00			
DISTANCA					0.00		3.60	7.5
KUOTA PUNES	-45.83	-45.86	-46.70	-46.70	-46.60	-46.31	-45.78	-45.82

**KESH**

KORPORATA ELEKTROENERGJIKE SHQIPTARE  
NJESIA PRODHUESE HEC FIERZE

PROJEKT ZBATIM

2022

GRUPI I PROJEKTIMIT

Ing. ENTEJLA CANO  
Ing. MEFAJL HALILAJ

Ing. DRITAN BUZI  
Ing. VALENTINA HOXHIA

Ing. THANAS CARKA  
Ark. PAQSOR KAJMAKU

"A & E ENGINEERING"  
sh.p.k

Adresa: Rr. "ISLAMALLA"  
Mob: ++355 (0)69 2079981  
Mob: ++355 (0)69 2079982

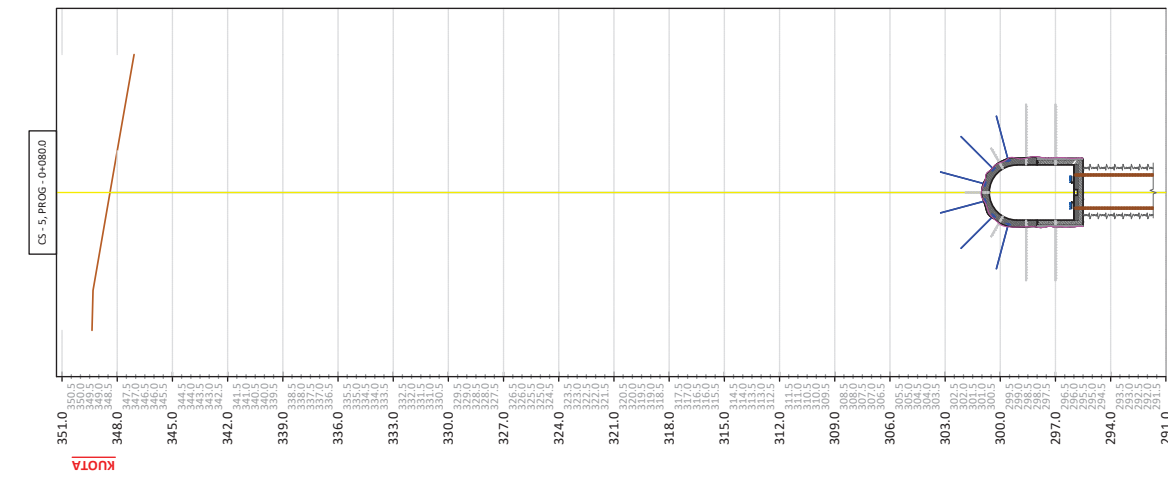
REHABILITIMI I GALERISE SE CEMENTIMIT  
NE KUOTEN 296.00MMIDNE SHPALLULLEN E  
MAJTE TE DIGES FIERZE

SEKSIONE TERTHORE TE GALERISE  
S.T.04

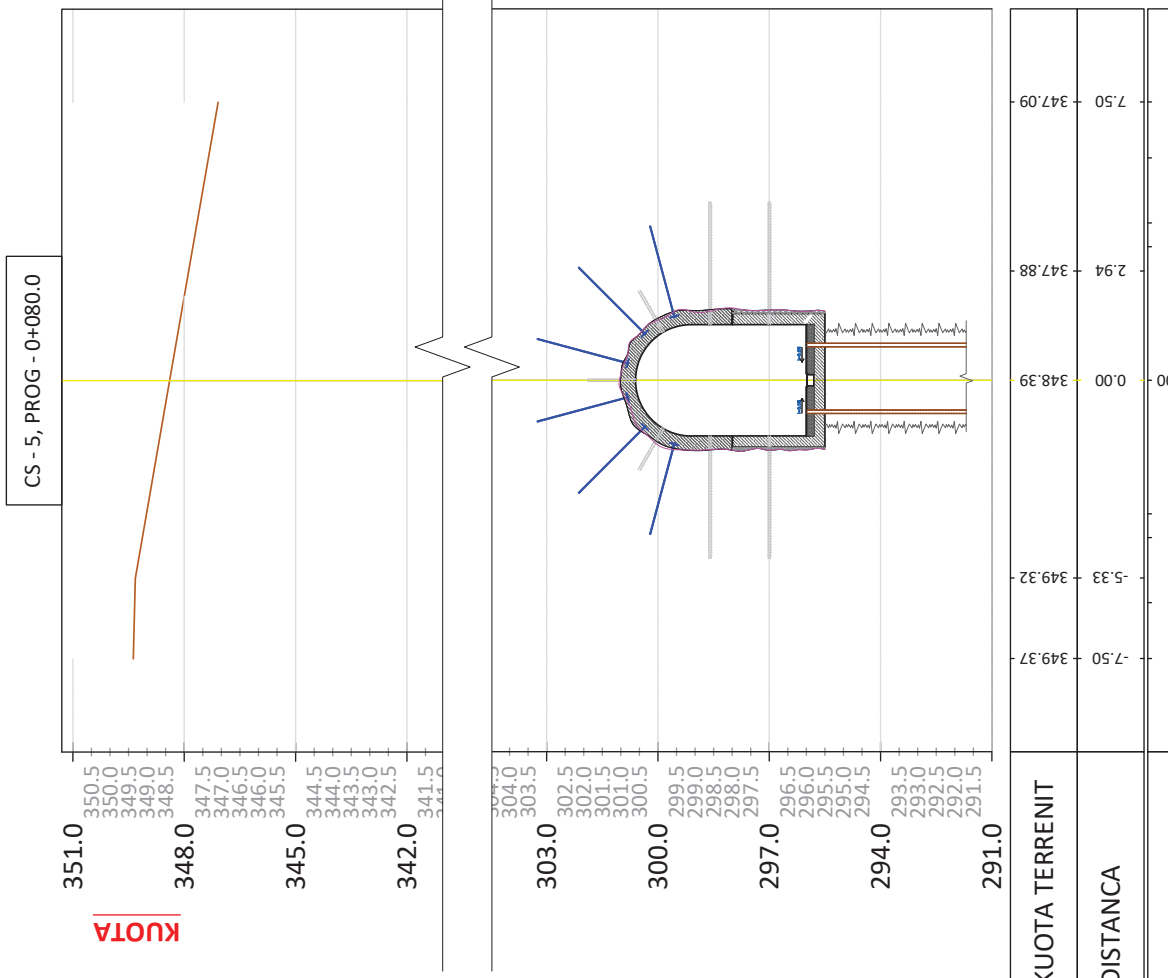
SHKALLA

1:150

# SEKSIONE TERTHORE

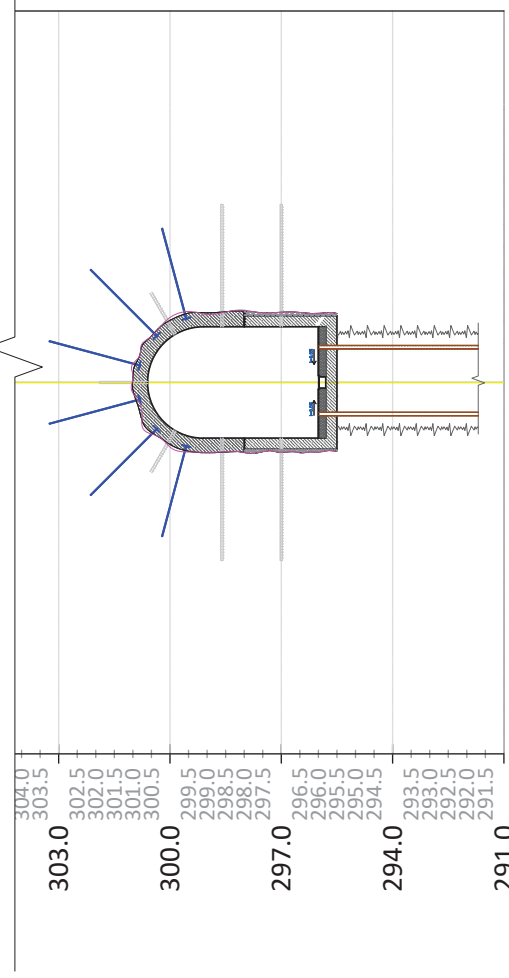
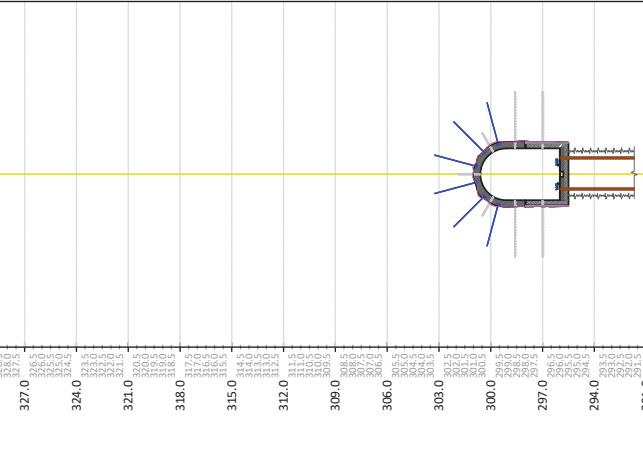
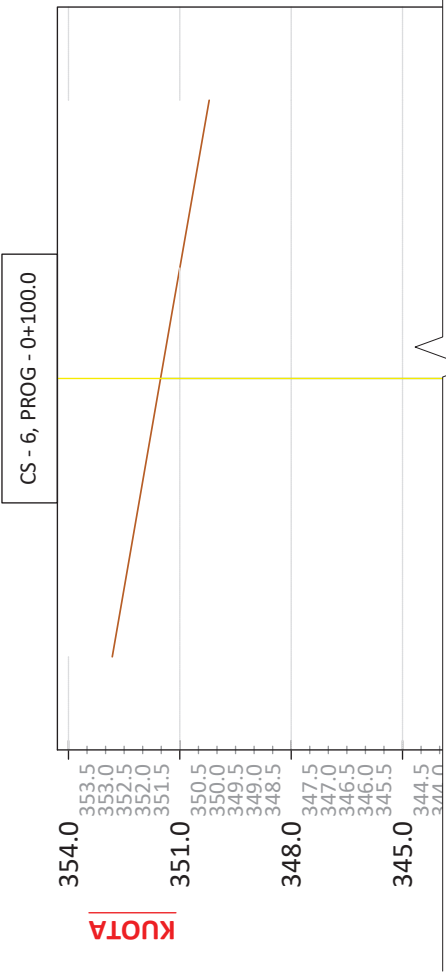
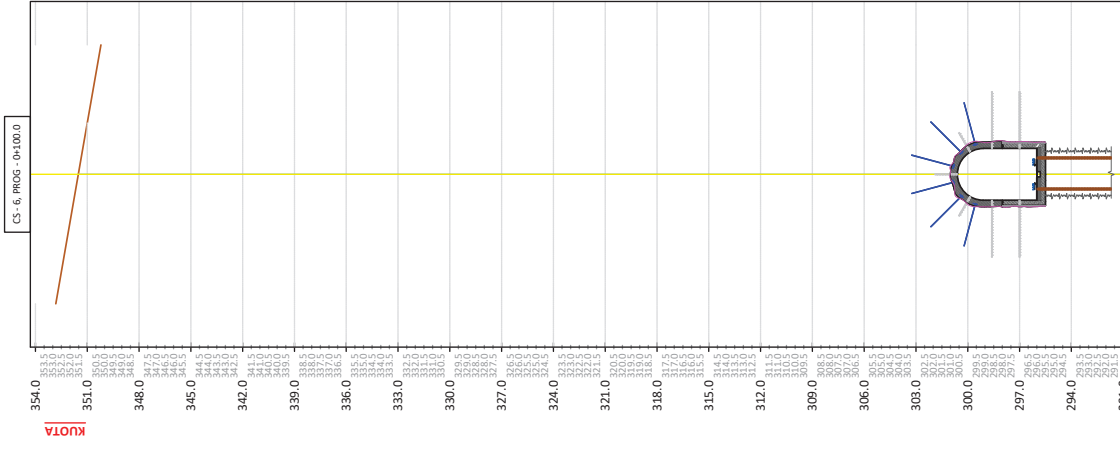


KUOTA TERRENIT	-51.06	-51.22	-51.98	-52.29	-52.94	-52.84	-53.34	-53.45	-53.21	-53.35
DISTANCA	7.50	7.5	4.24	3.60	0.00	296.00	0.00	-3.60	-4.24	-3.34
KUOTA PROJEKTIT										
DISTANCA										
KUOTA PUNES										



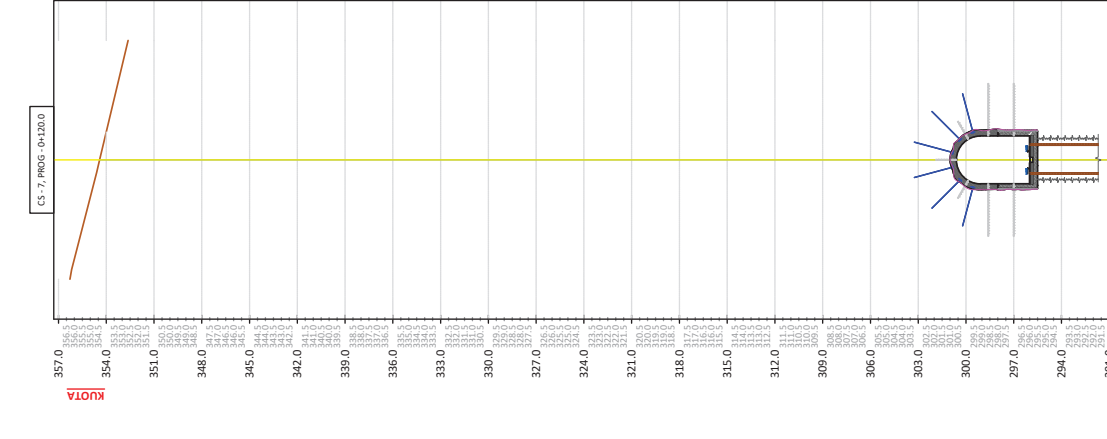
KUOTA TERRENIT	-51.06	-51.22	-51.98	-52.29	-52.84	-52.84	-53.34	-53.45	-53.21	-53.35
DISTANCA	7.50	7.5	4.24	3.60	0.00	296.00	0.00	-3.60	-4.24	-3.34
KUOTA PROJEKTIT										
DISTANCA										
KUOTA PUNES										

# SEKSIONE TERTHORE

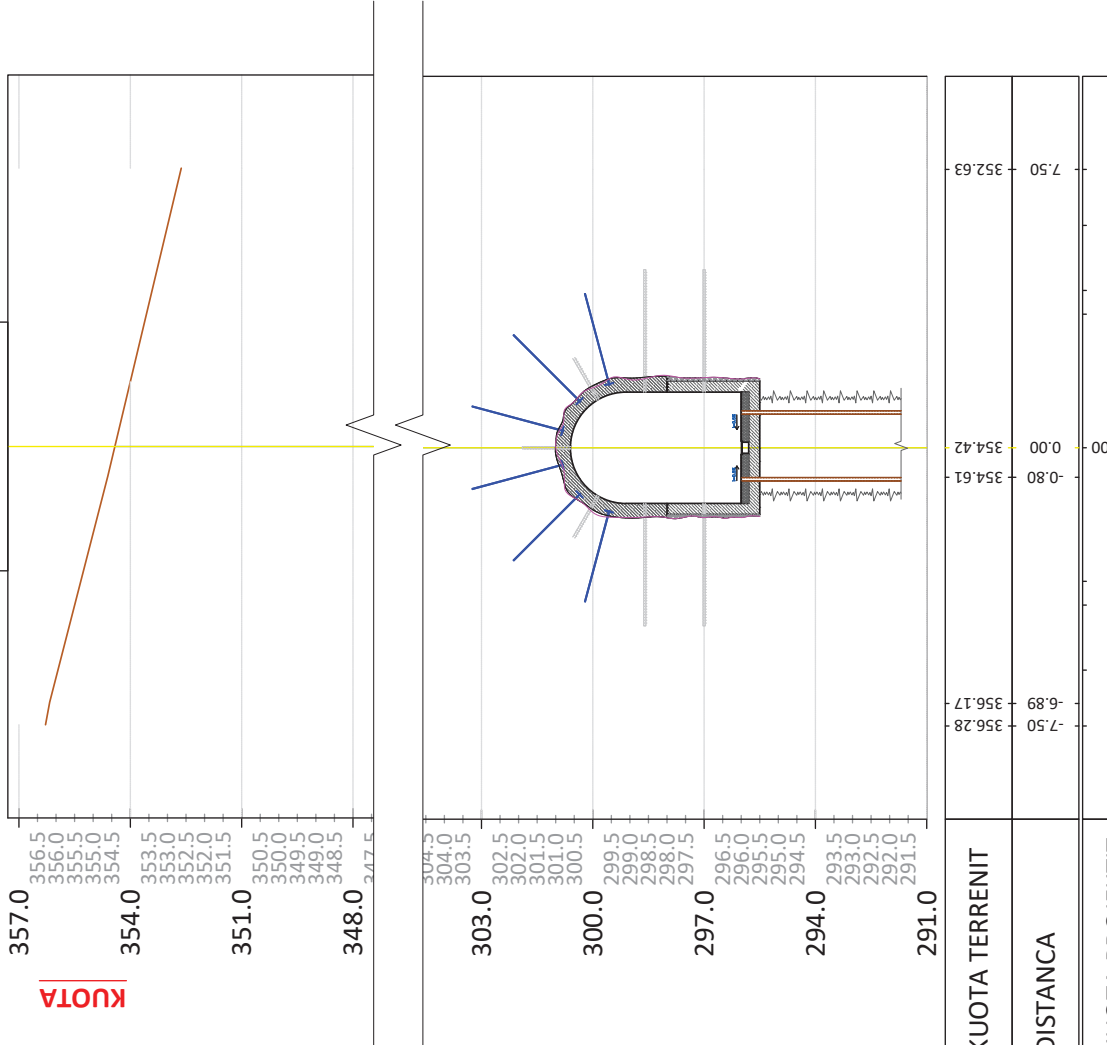


KUOTA TERRENIT	-7.50	352.82	351.52	351.22	350.21
DISTANCA			0.00	1.74	7.50
KUOTA PROJEKTI			296.00		
DISTANCA			0.00	-3.60	7.5
KUOTA PUNES	-56.79	-7.5	-56.43	-5.99	-4.24
			-56.58	-4.24	-3.60
			-56.47	-3.60	-5.99
			-55.97	0.00	-54.35
					-54.18
					-55.41
					-55.10
					-54.35
					-54.18

# SEKSIONE TERTHORE



KUOTA TERRENT	357.0	356.5	356.0	355.5	355.0	354.5	354.0	353.5	353.0	352.5	352.0	351.5	351.0	350.5	350.0	349.5	349.0	348.5	348.0	347.5	
DISTANCA	0.00	0.00	0.00	0.00	0.00	0.00	0.00	0.00	0.00	0.00	0.00	0.00	0.00	0.00	0.00	0.00	0.00	0.00	0.00	0.00	
KUOTA PROJEKTIT	304.0	303.5	302.5	302.0	301.5	301.0	300.5	299.5	299.0	298.5	298.0	297.5	296.5	296.0	295.5	295.0	294.5	293.5	293.0	292.5	291.5
DISTANCA	0.00	0.00	0.00	0.00	0.00	0.00	0.00	0.00	0.00	0.00	0.00	0.00	0.00	0.00	0.00	0.00	0.00	0.00	0.00	0.00	0.00
KUOTA PUNES	304.0	303.5	302.5	302.0	301.5	301.0	300.5	299.5	299.0	298.5	298.0	297.5	296.5	296.0	295.5	295.0	294.5	293.5	293.0	292.5	291.5



KUOTA TERRENT	357.0	356.5	356.0	355.5	355.0	354.5	354.0	353.5	353.0	352.5	352.0	351.5	351.0	350.5	350.0	349.5	349.0	348.5	348.0	347.5	
DISTANCA	0.00	0.00	0.00	0.00	0.00	0.00	0.00	0.00	0.00	0.00	0.00	0.00	0.00	0.00	0.00	0.00	0.00	0.00	0.00	0.00	
KUOTA PROJEKTIT	304.0	303.5	302.5	302.0	301.5	301.0	300.5	299.5	299.0	298.5	298.0	297.5	296.5	296.0	295.5	295.0	294.5	293.5	293.0	292.5	291.5
DISTANCA	0.00	0.00	0.00	0.00	0.00	0.00	0.00	0.00	0.00	0.00	0.00	0.00	0.00	0.00	0.00	0.00	0.00	0.00	0.00	0.00	0.00
KUOTA PUNES	304.0	303.5	302.5	302.0	301.5	301.0	300.5	299.5	299.0	298.5	298.0	297.5	296.5	296.0	295.5	295.0	294.5	293.5	293.0	292.5	291.5

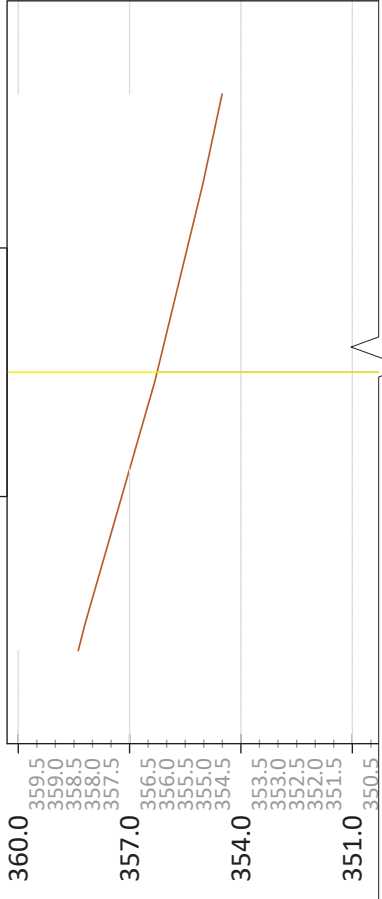
KUOTA TERRENT	357.0	356.5	356.0	355.5	355.0	354.5	354.0	353.5	353.0	352.5	352.0	351.5	351.0	350.5	350.0	349.5	349.0	348.5	348.0	347.5	
DISTANCA	0.00	0.00	0.00	0.00	0.00	0.00	0.00	0.00	0.00	0.00	0.00	0.00	0.00	0.00	0.00	0.00	0.00	0.00	0.00	0.00	
KUOTA PROJEKTIT	304.0	303.5	302.5	302.0	301.5	301.0	300.5	299.5	299.0	298.5	298.0	297.5	296.5	296.0	295.5	295.0	294.5	293.5	293.0	292.5	291.5
DISTANCA	0.00	0.00	0.00	0.00	0.00	0.00	0.00	0.00	0.00	0.00	0.00	0.00	0.00	0.00	0.00	0.00	0.00	0.00	0.00	0.00	0.00
KUOTA PUNES	304.0	303.5	302.5	302.0	301.5	301.0	300.5	299.5	299.0	298.5	298.0	297.5	296.5	296.0	295.5	295.0	294.5	293.5	293.0	292.5	291.5

KUOTA TERRENT	357.0	356.5	356.0	355.5	355.0	354.5	354.0	353.5	353.0	352.5	352.0	351.5	351.0	350.5	350.0	349.5	349.0	348.5	348.0	347.5	
DISTANCA	0.00	0.00	0.00	0.00	0.00	0.00	0.00	0.00	0.00	0.00	0.00	0.00	0.00	0.00	0.00	0.00	0.00	0.00	0.00	0.00	
KUOTA PROJEKTIT	304.0	303.5	302.5	302.0	301.5	301.0	300.5	299.5	299.0	298.5	298.0	297.5	296.5	296.0	295.5	295.0	294.5	293.5	293.0	292.5	291.5
DISTANCA	0.00	0.00	0.00	0.00	0.00	0.00	0.00	0.00	0.00	0.00	0.00	0.00	0.00	0.00	0.00	0.00	0.00	0.00	0.00	0.00	0.00
KUOTA PUNES	304.0	303.5	302.5	302.0	301.5	301.0	300.5	299.5	299.0	298.5	298.0	297.5	296.5	296.0	295.5	295.0	294.5	293.5	293.0	292.5	291.5

KUOTA TERRENT	357.0	356.5	356.0	355.5	355.0	354.5	354.0	353.5	353.0	352.5	352.0	351.5	351.0	350.5	350.0	349.5	349.0	348.5	348.0	347.5	
DISTANCA	0.00	0.00	0.00	0.00	0.00	0.00	0.00	0.00	0.00	0.00	0.00	0.00	0.00	0.00	0.00	0.00	0.00	0.00	0.00	0.00	
KUOTA PROJEKTIT	304.0	303.5	302.5	302.0	301.5	301.0	300.5	299.5	299.0	298.5	298.0	297.5	296.5	296.0	295.5	295.0	294.5	293.5	293.0	292.5	291.5
DISTANCA	0.00	0.00	0.00	0.00	0.00	0.00	0.00	0.00	0.00	0.00	0.00	0.00	0.00	0.00	0.00	0.00	0.00	0.00	0.00	0.00	0.00
KUOTA PUNES	304.0	303.5	302.5	302.0	301.5	301.0	300.5	299.5	299.0	298.5	298.0	297.5	296.5	296.0	295.5	295.0	294.5	293.5	293.0	292.5	291.5

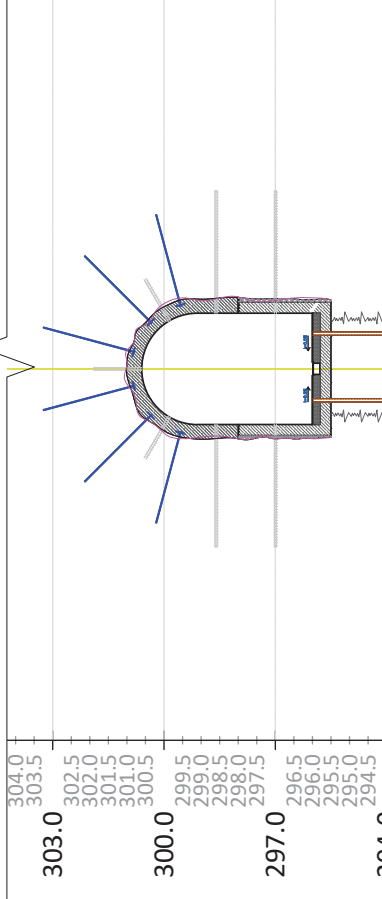
# SEKSIONE TERTHORE

CS - 8, PROG - 0+140.0



360.0	359.5
	359.0
	358.5
	358.0
	357.5
357.0	356.5
	356.0
	355.5
	355.0
	354.5
354.0	353.5
	353.0
	352.5
	352.0
	351.5
351.0	350.5

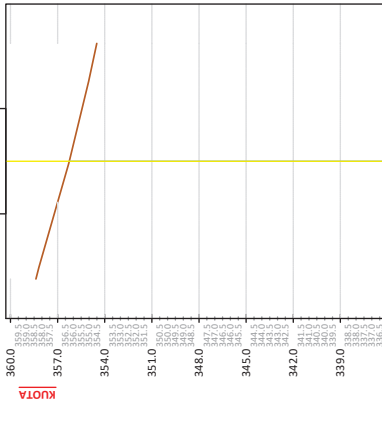
CS - 8, PROG - 0+140.0



304.0	299.5
303.5	299.0
302.5	298.5
302.0	298.0
301.5	297.5
301.0	296.5
300.5	296.0
300.0	295.5
299.5	295.0
299.0	294.5
298.5	293.5
298.0	293.0
297.5	292.5
297.0	292.0
296.5	291.5
296.0	
295.5	
295.0	
294.5	
294.0	
293.5	
293.0	
292.5	
292.0	
291.5	

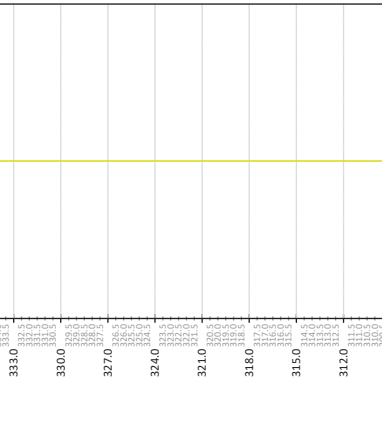
KUOTA TERRENIT	-7.50	358.19	-61.85	-5.99	-61.79	-4.24	-61.61	-3.60	-60.71	0.00	296.00	0.00	-59.91	3.60	-59.55	4.24	-58.70	5.99	-58.48	7.50	354.51	
DISTANCA																						
KUOTA PROJEKTTI																						
DISTANCA																						
KUOTA PUNES																						

CS - 8, PROG - 0+140.0



360.0	357.0
	354.0
	351.0
	348.0
	345.0
	342.0
	339.0
	336.0
	333.0
	330.0
	327.0
	324.0
	321.0
	318.0
	315.0
	312.0
	309.0
	306.0
	303.0
300.0	
297.0	
294.0	
291.0	

CS - 8, PROG - 0+140.0

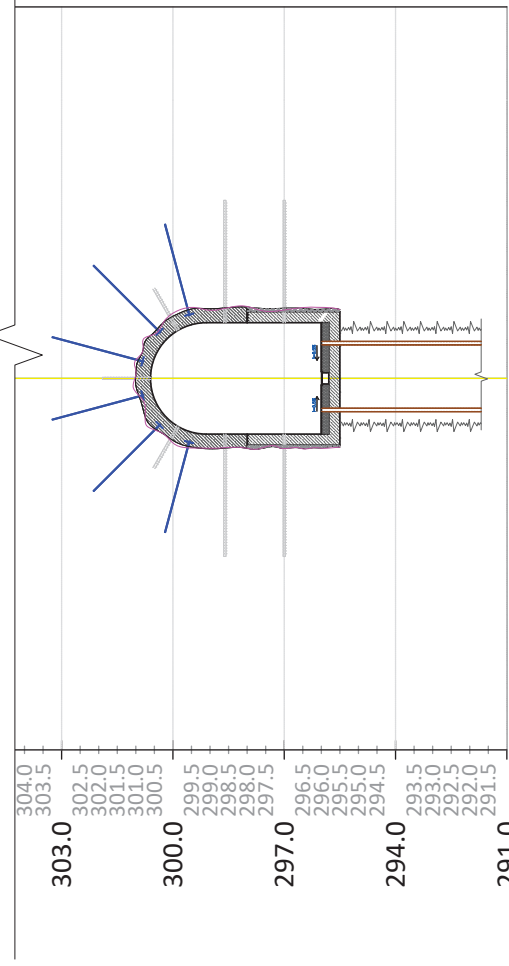
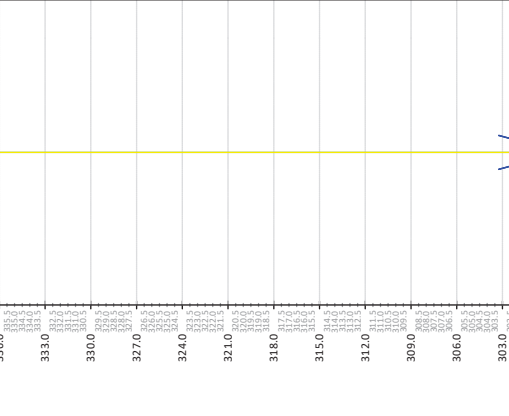
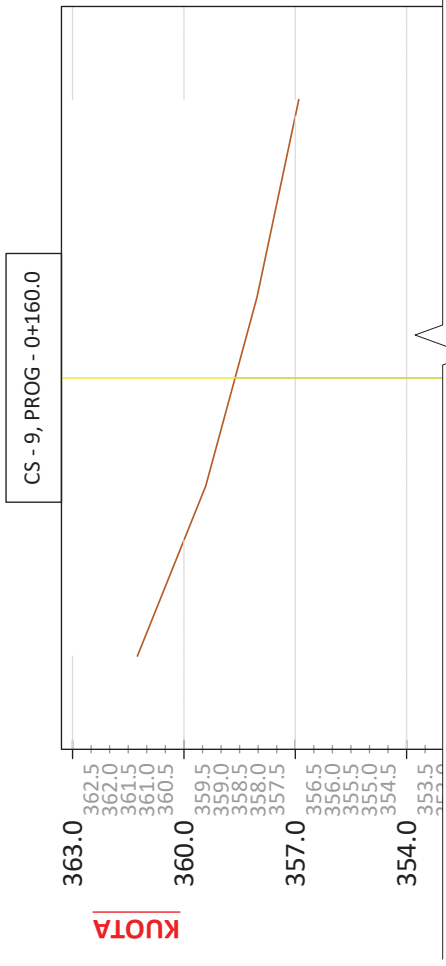
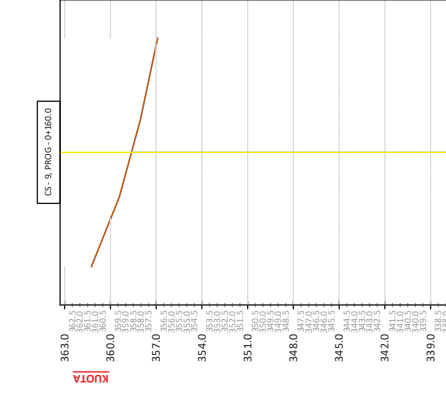


360.0	357.0
	354.0
	351.0
	348.0
	345.0
	342.0
	339.0
	336.0
	333.0
	330.0
	327.0
	324.0
	321.0
	318.0
	315.0
	312.0
	309.0
	306.0
	303.0
300.0	
297.0	
294.0	
291.0	

KUOTA TERRENIT	-7.50	358.19	-61.85	-5.99	-61.79	-4.24	-61.61	-3.60	-60.71	0.00	296.00	0.00	-59.91	3.60	-59.55	4.24	-58.70	5.99	-58.48	7.50	354.51
DISTANCA																					
KUOTA PROJEKTTI																					
DISTANCA																					
KUOTA PUNES																					



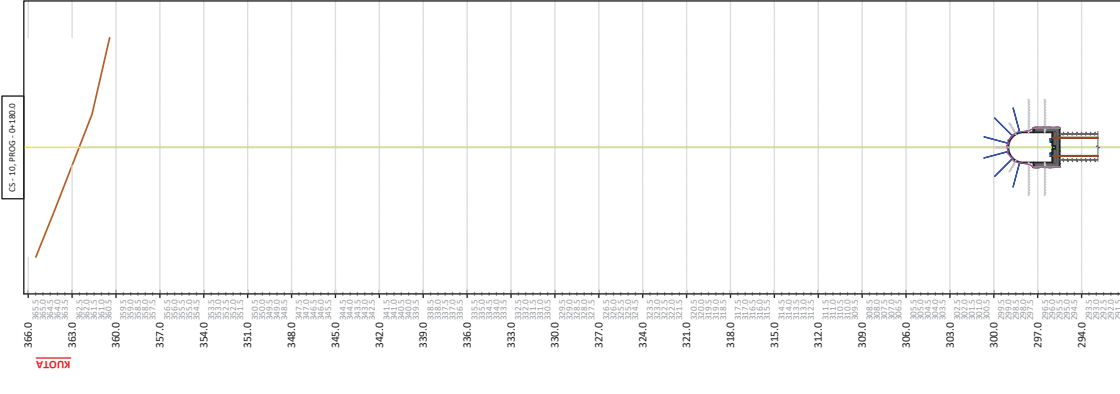
# SEKSIONE TERTHORE



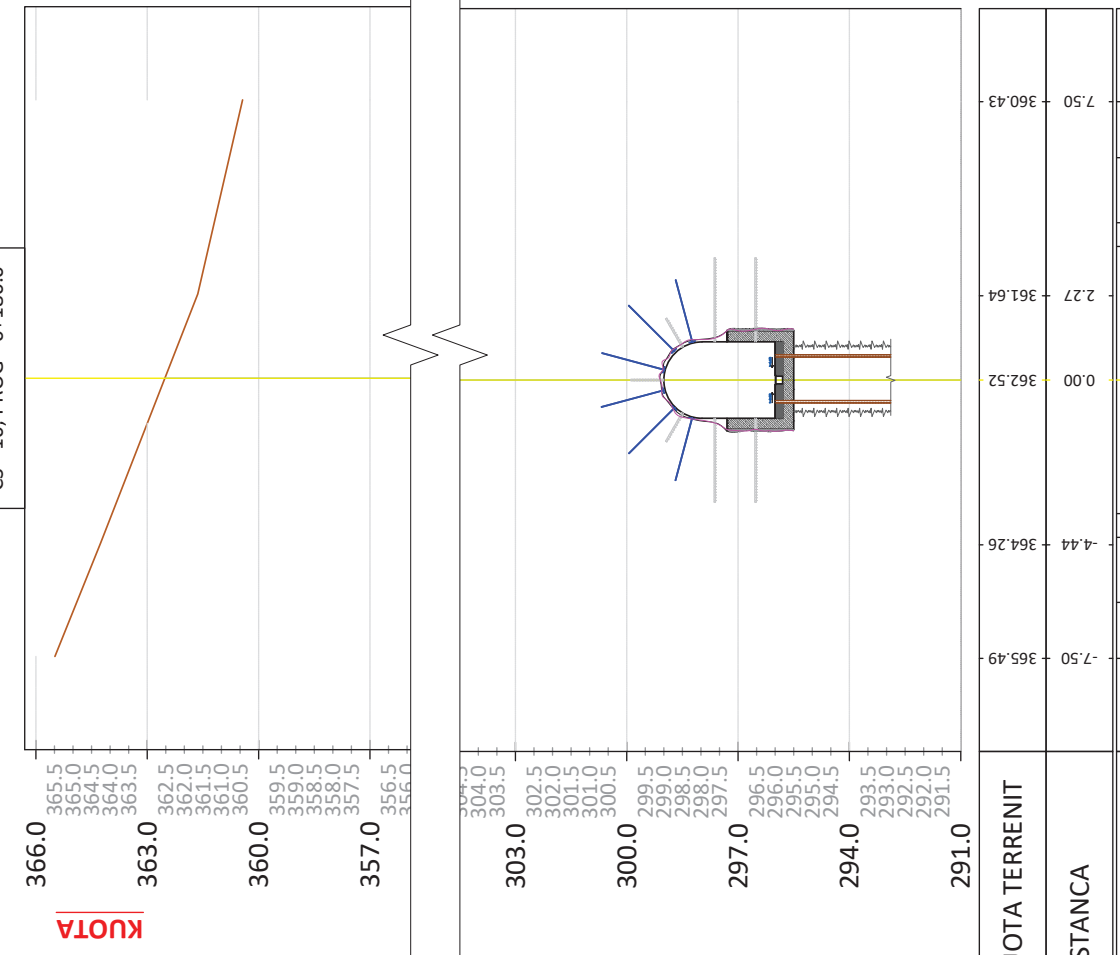
KUOTA TERRENIT	363.0	362.5	362.0	361.5	361.0	360.5	359.5	359.0	358.5	358.0	357.5	356.5	356.0	355.5	355.0	354.5	353.5
DISTANCA	0.00	0.00	0.00	0.00	0.00	0.00	0.00	0.00	0.00	0.00	0.00	0.00	0.00	0.00	0.00	0.00	0.00
KUOTA PROJEKTTIT	303.0	302.5	302.0	301.5	301.0	300.5	299.5	299.0	298.5	298.0	297.5	296.5	296.0	295.5	295.0	294.5	293.5
DISTANCA	0.00	0.00	0.00	0.00	0.00	0.00	0.00	0.00	0.00	0.00	0.00	0.00	0.00	0.00	0.00	0.00	0.00
KUOTA PUNES	304.0	303.5	302.5	302.0	301.5	301.0	300.5	299.5	299.0	298.5	298.0	297.5	296.5	296.0	295.5	294.5	293.5

KUOTA TERRENIT	363.0	362.5	362.0	361.5	361.0	360.5	359.5	359.0	358.5	358.0	357.5	356.5	356.0	355.5	355.0	354.5	353.5
DISTANCA	0.00	0.00	0.00	0.00	0.00	0.00	0.00	0.00	0.00	0.00	0.00	0.00	0.00	0.00	0.00	0.00	0.00
KUOTA PROJEKTTIT	303.0	302.5	302.0	301.5	301.0	300.5	299.5	299.0	298.5	298.0	297.5	296.5	296.0	295.5	295.0	294.5	293.5
DISTANCA	0.00	0.00	0.00	0.00	0.00	0.00	0.00	0.00	0.00	0.00	0.00	0.00	0.00	0.00	0.00	0.00	0.00
KUOTA PUNES	304.0	303.5	302.5	302.0	301.5	301.0	300.5	299.5	299.0	298.5	298.0	297.5	296.5	296.0	295.5	294.5	293.5

# SEKSIONE TERTHORE



KUOTA TERRENT	366.0	365.5	365.0	364.5	364.0	363.5	362.5	362.0	361.5	361.0	360.5	359.5	359.0	358.5	358.0	357.5	356.5	356.0
DISTANCA	0.00	0.00	0.00	0.00	0.00	0.00	0.00	0.00	0.00	0.00	0.00	0.00	0.00	0.00	0.00	0.00	0.00	0.00
KUOTA PROJEKTI	303.0	302.5	302.0	301.5	301.0	300.5	299.5	299.0	298.5	298.0	297.5	296.5	296.0	295.5	295.0	294.5	293.5	293.0
DISTANCA	0.00	0.00	0.00	0.00	0.00	0.00	0.00	0.00	0.00	0.00	0.00	0.00	0.00	0.00	0.00	0.00	0.00	0.00
KUOTA PUNES	303.0	300.0	297.0	294.0	291.0													

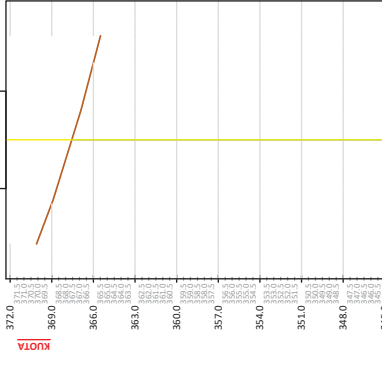
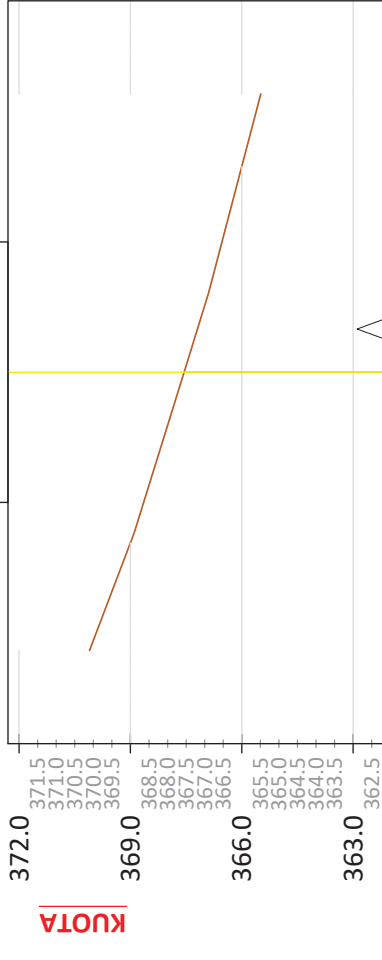


KUOTA TERRENT	366.0	365.5	365.0	364.5	364.0	363.5	362.5	362.0	361.5	361.0	360.5	359.5	359.0	358.5	358.0	357.5	356.5	356.0
DISTANCA	0.00	0.00	0.00	0.00	0.00	0.00	0.00	0.00	0.00	0.00	0.00	0.00	0.00	0.00	0.00	0.00	0.00	0.00
KUOTA PROJEKTI	303.0	302.5	302.0	301.5	301.0	300.5	299.5	299.0	298.5	298.0	297.5	296.5	296.0	295.5	295.0	294.5	293.5	293.0
DISTANCA	0.00	0.00	0.00	0.00	0.00	0.00	0.00	0.00	0.00	0.00	0.00	0.00	0.00	0.00	0.00	0.00	0.00	0.00
KUOTA PUNES	303.0	300.0	297.0	294.0	291.0													

KUOTA TERRENT	365.49	362.52	361.64	360.43
DISTANCA	7.50	0.00	2.27	7.50
KUOTA PROJEKTI	296.00	296.00	296.00	296.00
DISTANCA	7.5	0.00	3.60	7.5
KUOTA PUNES	-69.46	-66.97	-65.66	-64.41
	-7.5	-68.75	-68.50	-64.11
	-5.99	-68.45	-68.24	-64.65
	-4.24	-65.51	-65.11	-65.99
	-3.60	-62.77	-62.27	-62.77
	-2.27	-60.43	-60.43	-60.43

# SEKSIONE TERTHORE

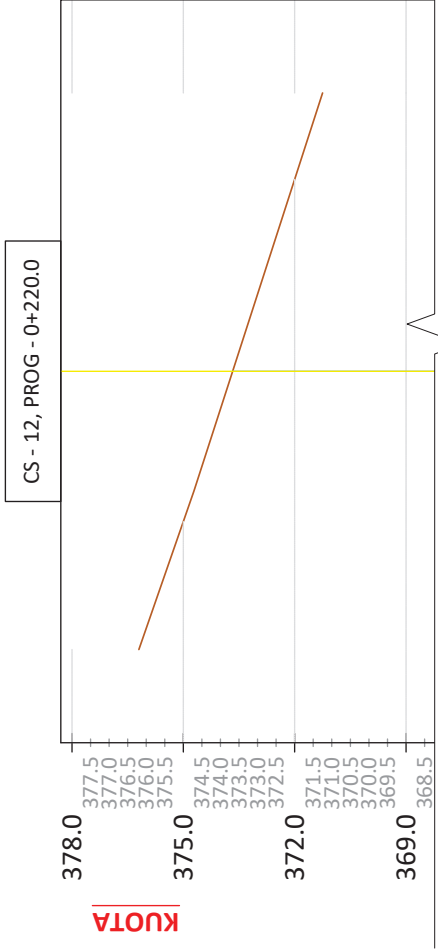
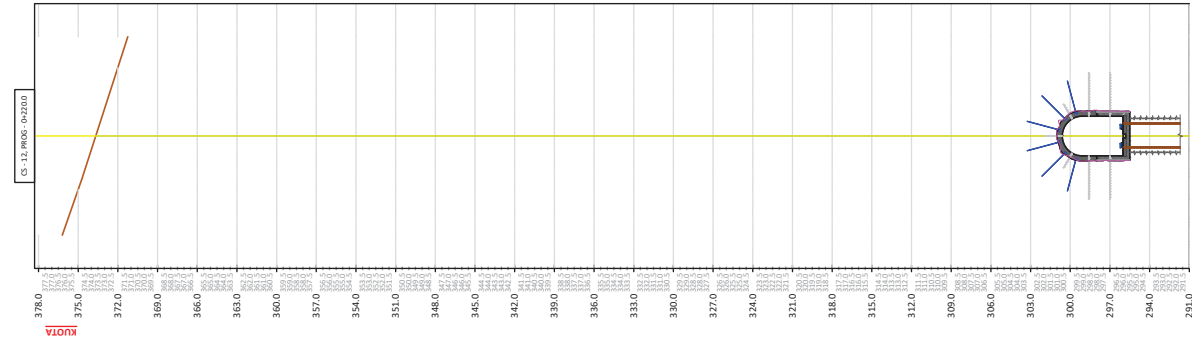
CS - 11, PROG - 0+200.0



KUOTA TERRENIT	370.10	-74.07	-73.40	-5.99	-4.24	-73.19	-72.99	-3.60	0.00	296.00	-72.00	-71.03	3.60	4.24	-70.67	-69.76	5.99	7.50	365.49	
DISTANCA																				
KUOTA PROJEKTIT																				
DISTANCA																				
KUOTA PUNES																				

KUOTA TERRENIT	370.10	-74.07	-73.40	-5.99	-4.24	-73.19	-72.99	-3.60	0.00	296.00	-72.00	-71.03	3.60	4.24	-70.67	-69.76	5.99	7.50	365.49	
DISTANCA																				
KUOTA PROJEKTIT																				
DISTANCA																				
KUOTA PUNES																				

# SEKSIONE TERTHORE



KUOTA TERRENT	371.25	373.67	374.71	376.20
DISTANCA	7.50	0.00	-3.23	-7.50
KUOTA PROJEKTT	296.00	296.00	296.00	296.00
DISTANCA	7.5	0.00	-3.60	-7.5
KUOTA PUNES	-75.22	-75.61	-76.63	-77.03
		5.99	4.24	3.60

**KESH**  
KORPORATA ELEKTROENERGJIKE SHQIPTARE  
NJESIA PRODHUSE HEC FIERZE

SHKALLA  
1:150

PROJEKT ZBATIM  
**2022**

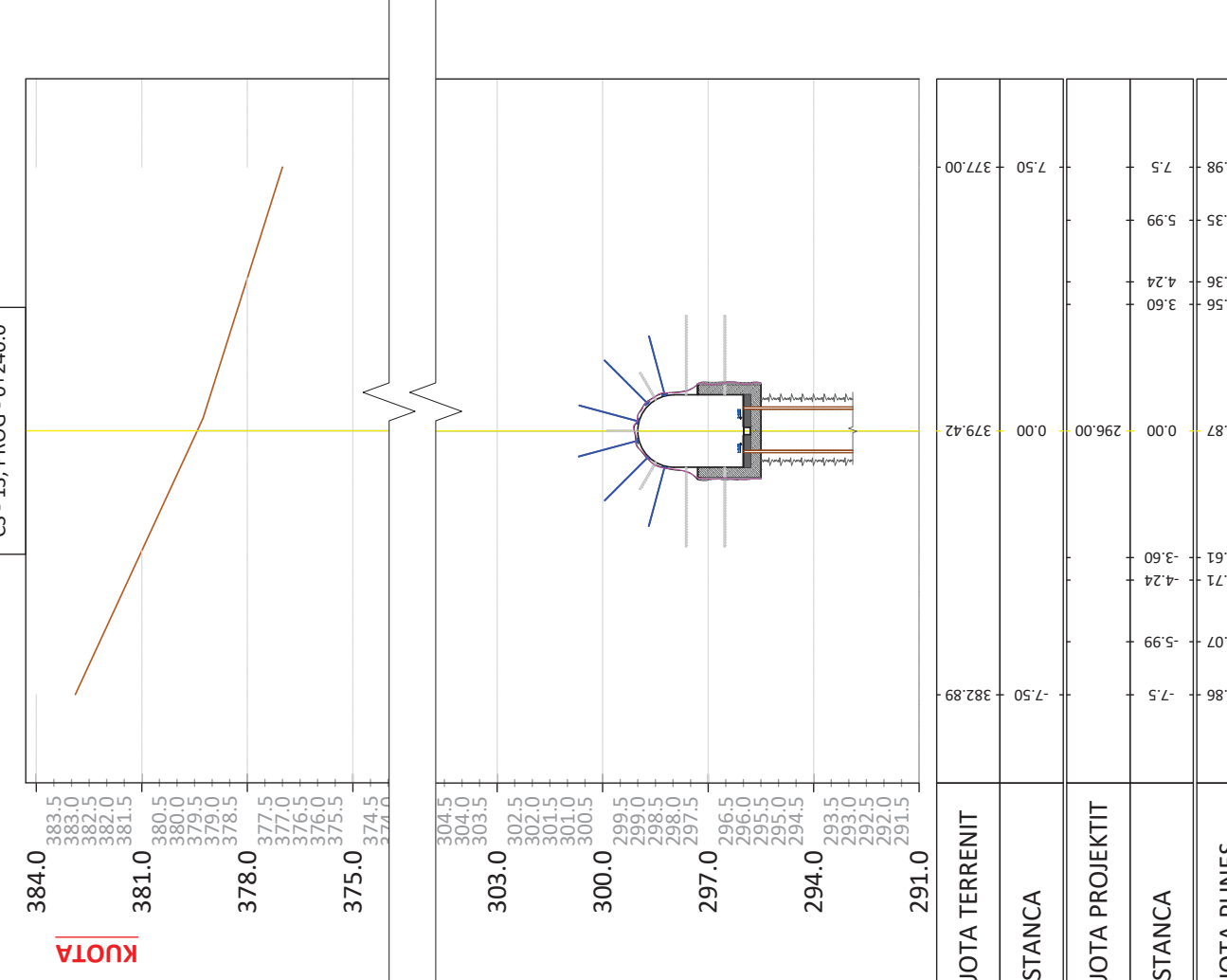
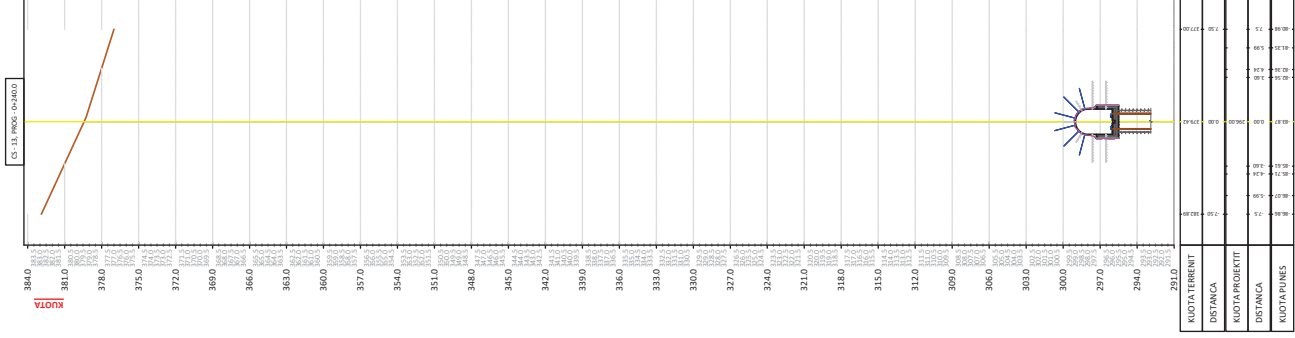
GRUPI I PROJEKTIMIT

Ing. ENTEJLA CANO    Ing. DRITAN BUZI  
Ing. MEFAJL HALILAJ    Ing. VALENTINA HOXHIA

SEKSIONE TERTHORE TE GALERISE  
MAJTE TE DIGES FIERZE

"A & E ENGINEERING"  
sh.p.k  
Adresa: Rr. "ISLAMALLA"  
Mob: ++355 (0)69 2079981  
Mob: ++355 (0)69 2079982

# SEKSIONE TERTHORE



CS - 13, PROG - 0+240.0

KUOTA TERRENIT	-7.50	-382.89	0.00	-379.42	7.50	-377.00
DISTANCA						
KUOTA PROJEKTIT			0.00	296.00		
DISTANCA						
KUOTA PUNES	-86.86	-86.07	-5.99	-4.24	-3.60	-85.61
						-81.35
						-82.36
						-82.56
						-81.98



KORPORATA ELEKTROENERGJITIKE SHQIPTARE  
NJESIA PRODHUSE HEC FIERZE

GRUPI I PROJEKTIMIT

Ing. ENTEJLA CANO    Ing. DRITAN BUZI    Ing. THANAS CARKA  
Ing. MEFAIL HALILAJ    Ing. VALENTINA HOXHA    Ark. PAQSOR KAJMAKU

PROJEKT ZBATIM

2022

"A & E ENGINEERING" sh.p.k  
Adresa: Rr. "ISLAMALLA"  
Mob: ++355 (0)69 2079981  
Mob: ++355 (0)69 2079982

REHABILITIMI I GALERISE SE CEMENTIMIT NE KUOTEN 296.00 MMUND NE SHPALLULLEN E MAJTE TE DIGES FIERZE

SHKALLA

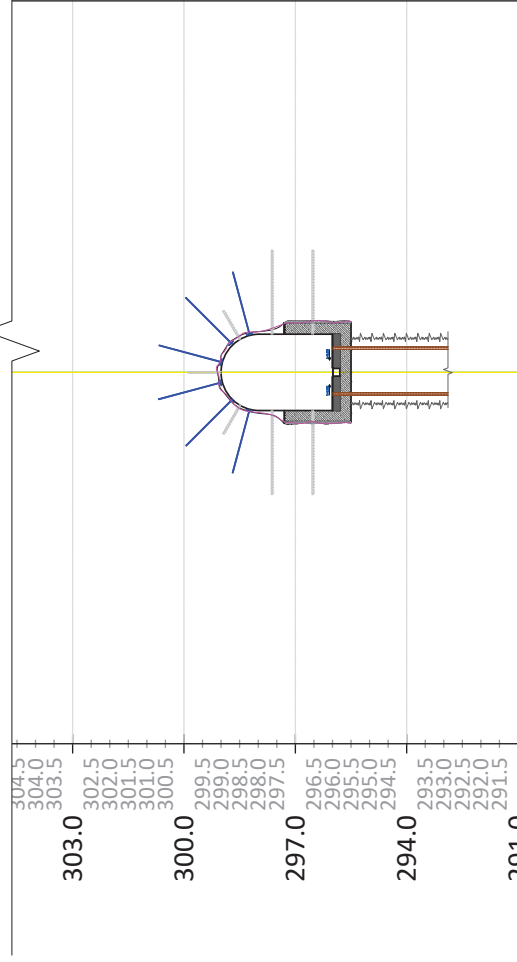
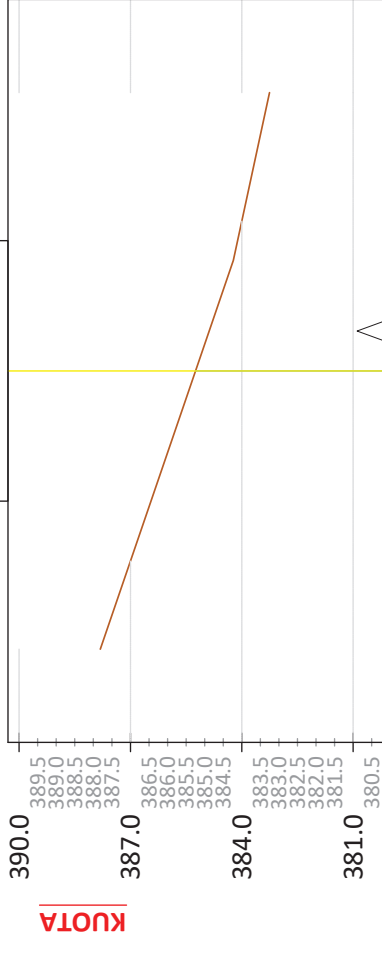
FL.

S.T.13

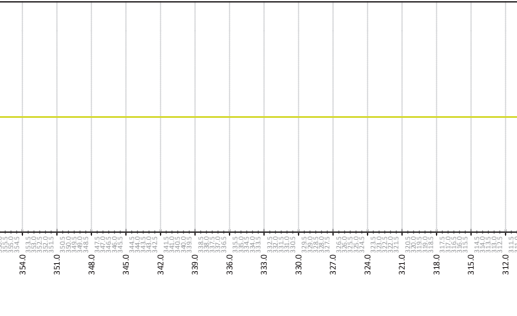
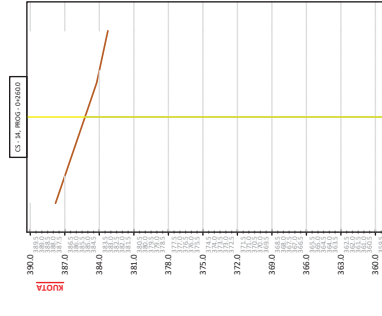
1:150

# SEKSIONE TERTHORE

CS - 14, PROG - 0+260.0



KUOTA TERRENIT	-7.50	387.81	0.00	385.25	2.98	384.23	7.50	383.25
DISTANCA								
KUOTA PROJEKTIT			296.00					
DISTANCA								
KUOTA PUNES								



KUOTA TERRENIT	-7.50	387.81	0.00	385.25	2.98	384.23	7.50	383.25
DISTANCA								
KUOTA PROJEKTIT			296.00					
DISTANCA								
KUOTA PUNES								

**KESH**  
KORPORATA ELEKTROENERGJIKE SHQIPTARE  
NJESIA PRODHUSE HEC FIERZE

PROJEKT ZBATIM **2022**

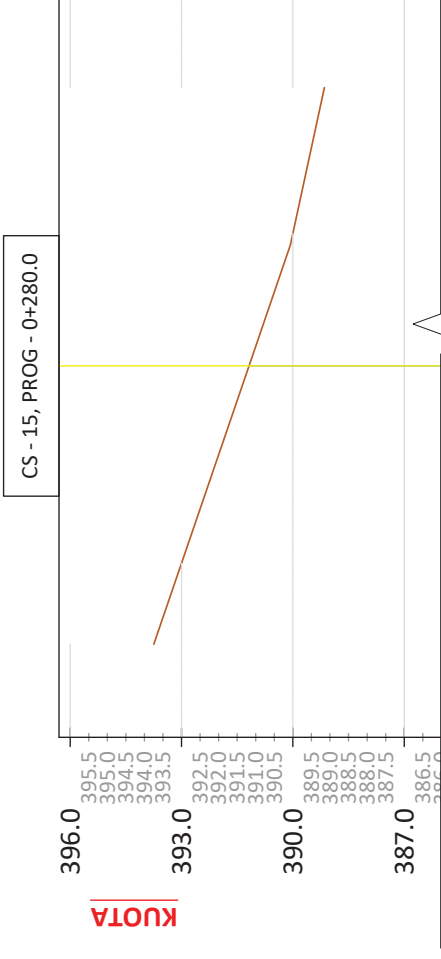
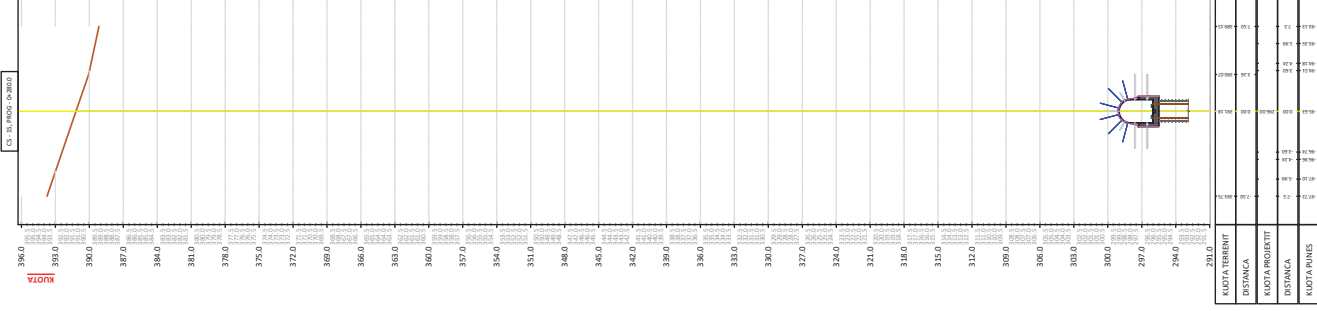
GRUPI I PROJEKTIMIT  
Ing. ENTEJA CANO    Ing. DRITAN BUZI  
Ing. MEFAIL HALILAJ    Ing. VALENTINA HOXHA

**A & E ENGINEERING**  
sh.p.k  
Adresa: Rr. "ISLAMALLA"  
Mob: ++355 (0)69 2079981  
Mob: ++355 (0)69 2079982

REHABILITIMI I GALERISE SE CEMENTIMIT  
NE KUOTEN 296.00 MUND NE SHPALLULLEN E  
MAJTE TE DIGES FIERZE

SHKALLA  
FL.  
S.T.14

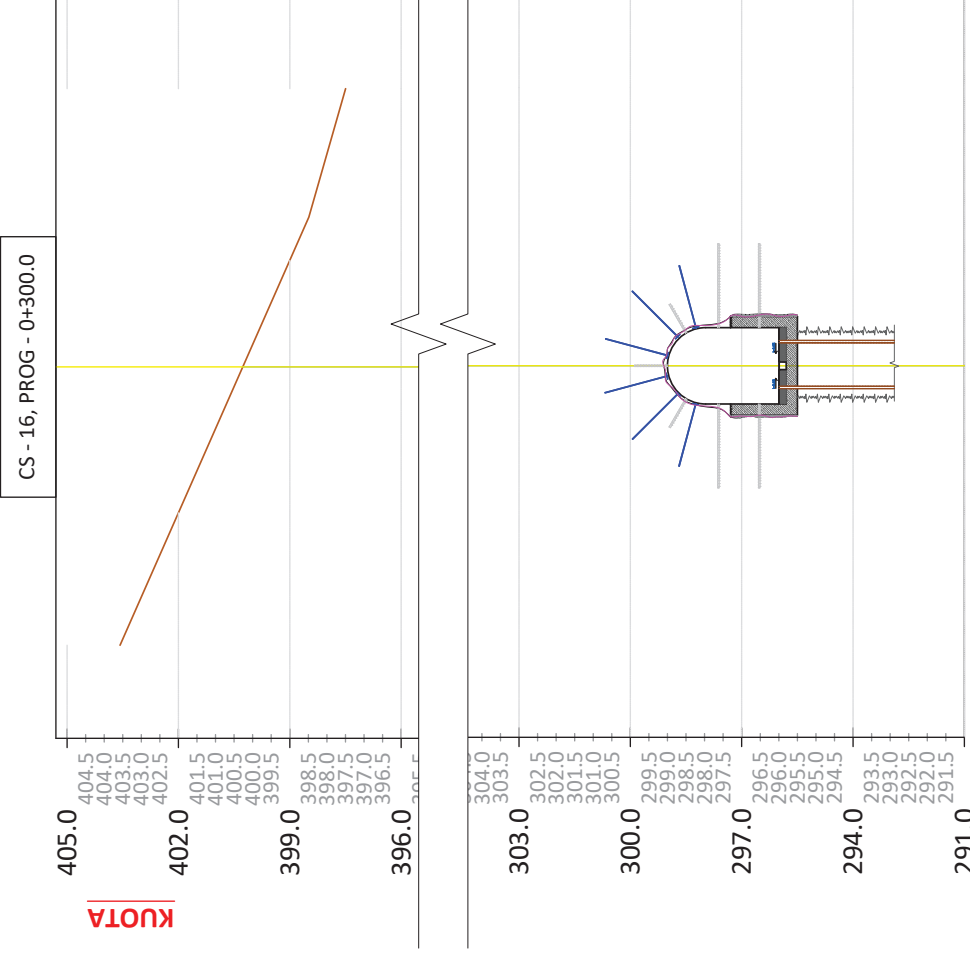
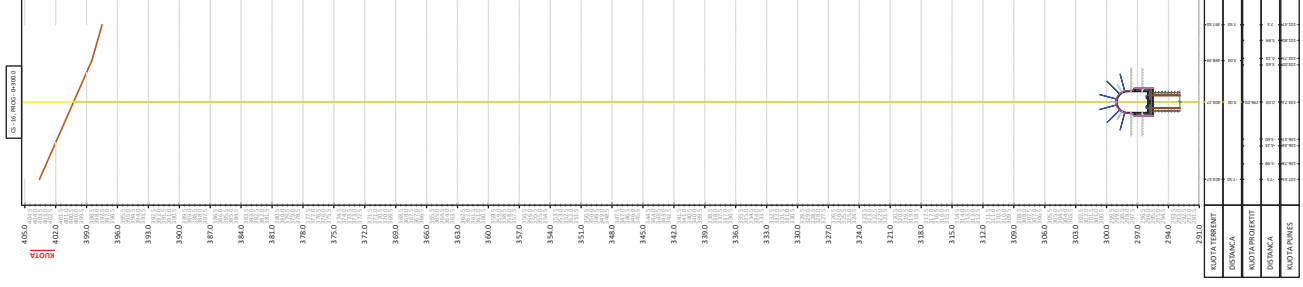
# SEKSIONE TERTHORE



KUOTA TERRENIT	-7.50	393.75	-97.72	-7.5	-97.10	-5.99	-96.96	-4.24	-96.74	-3.60	-94.51	3.60	390.07	3.26	389.15	7.50	389.15
DISTANCA																	
KUOTA PROJEKTIT																	
DISTANCA																	
KUOTA PUNES																	

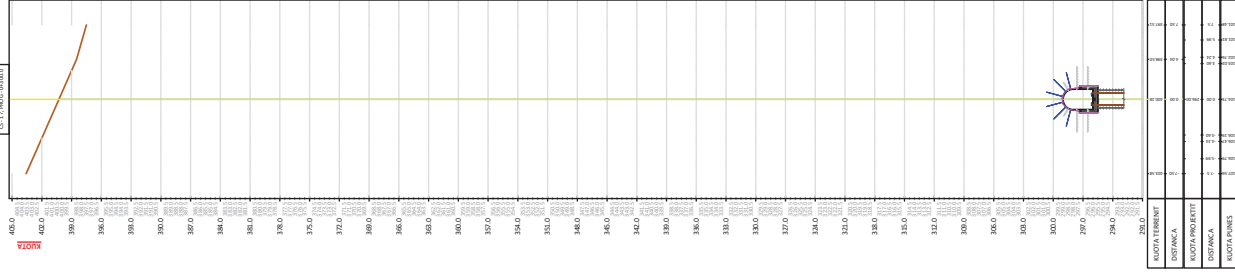


# SEKSIONE TERTHORE

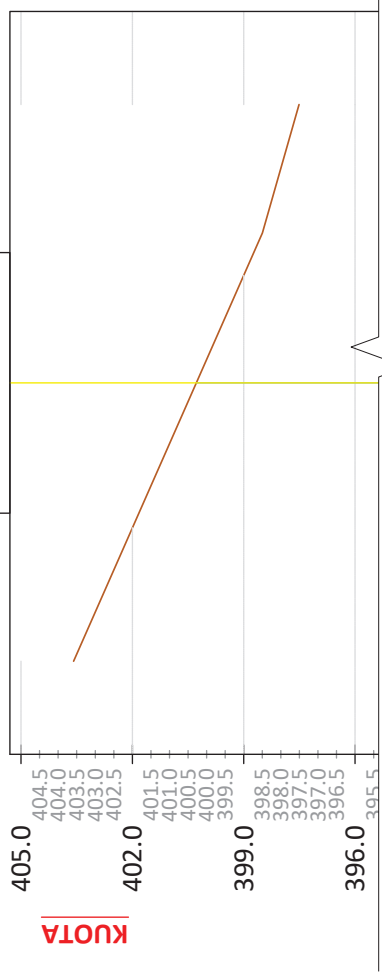


KUOTA TERRENIT	-107.55	-106.78	-106.46	-106.37	-104.72	400.27	398.49	397.50
DISTANCA	-7.5	-5.99	-4.24	-3.60	0.00	4.04	7.50	
KUOTA PROJEKTTIT	296.00	296.00	296.00	296.00	296.00	296.00	296.00	296.00
DISTANCA	0.00	0.00	0.00	0.00	0.00	0.00	0.00	0.00
KUOTA PUNES	291.0	294.0	297.0	300.0	303.0	304.0	303.5	302.5

# SEKSIONE TERTHORE



CS - 17, PROG - 0+300.0



KUOTA

KUOTA TERRENIT	-7.50	403.58	-107.56	-7.5	-106.79	-5.99	-106.47	-4.24	-106.19	-3.60	-104.73	0.00	296.00	0.00	400.28	398.50	4.04	397.51	7.50
DISTANCA																			
KUOTA PROJEKTIT																			
DISTANCA																			
KUOTA PUNES																			

**KESH**

KORPORATA ELEKTROENERGJIKE SHQIPTARE  
NJESIA PRODHUSE HEC FIERZE

GRUPI I PROJEKTIMIT

Ing. ENTEJLA CANO    Ing. DRITAN BUZI    Ing. THANAS CARKA  
Ing. MEFAIL HALILAJ    Ing. VALENTINA HOXHA    Ark. PAQSOR KAJMAKU

REHABILITIMI I GALERISE SE CEMENTIMIT  
NE KUOTEN 296.00 MUND NE SHPALLULEN E  
MAJTE TE DIGES FIERZE

SEKSIONE TERTHORE TE GALERISE

PROJEKT ZBATIM

2022

SHKALLA

FL.

S.T.17

1:150