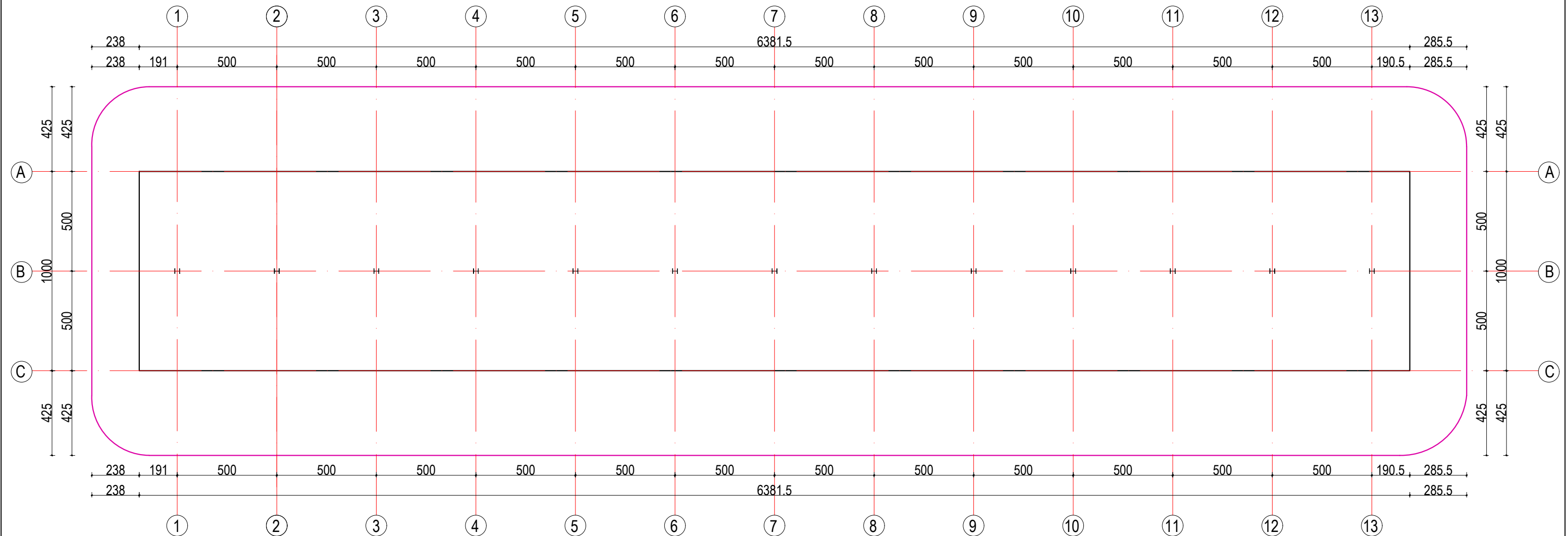


## Plani i piketimit te kolonave Platformes nr.1 Sh.1:220



### SHENIME TEKNIKE

- BETONI I KOLONAVE C25/30 M 300 B-30
- CELIKU I KONSTRUKSIONIT B/A: S500, B500 C OSE EKUIVALENT
- CELIKU I STRUKTURAVE TE PERBERA METALIKE DO TE JETE I KLASIT S275



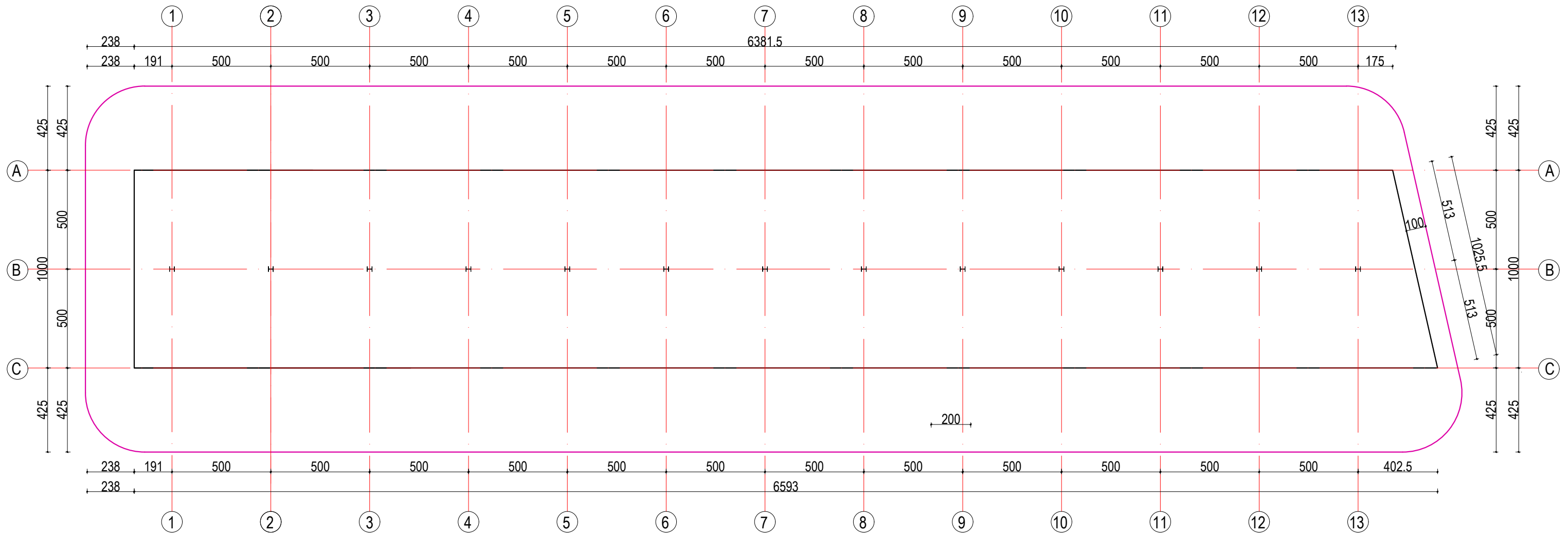
OBJEKTI: "NDËRTIMI I TREGUT DITOR NË TIRANA  
AGRIKULTURE, FARKË"

Ing. Hidroteknik	Filjana Veizaj	H/T.0110/8
Arkitekt	Bledi Lula	A.2008/1
Ing. Ndertimi	Reshit Bedhia	K.0305/3
Ing. Elektrik	Florian Lame	E.1631
Ing. Elektrik	Fatmira Shyti	E.0462/2
Topograf	Blerim Lama	T.1180/1

B.O.E : "INFRATECH, TESLA VISION &  
ENGINEERING CONSULTING GROUP" sh.p.k

FAZA	PROJEKT ZBATIMI	Plani i Piketimit Platforma nr.1	
DORËZIM	1.0	SHKALLA	1/220
		Nr.I FLETES	K-01

## Plani i piketimit te kolonave Platformes nr.2 Sh.1:220



### SHENIME TEKNIKE

- BETONI I KOLONAVE C25/30 M 300 B-30
- CELIKU I KONSTRUKSIONIT B/A: S500, B500 C OSE EKUIVALENT
- CELIKU I STRUKTURAVE TE PERBERA METALIKE DO TE JETE I KLASIT S275

BASHKIA TIRANË



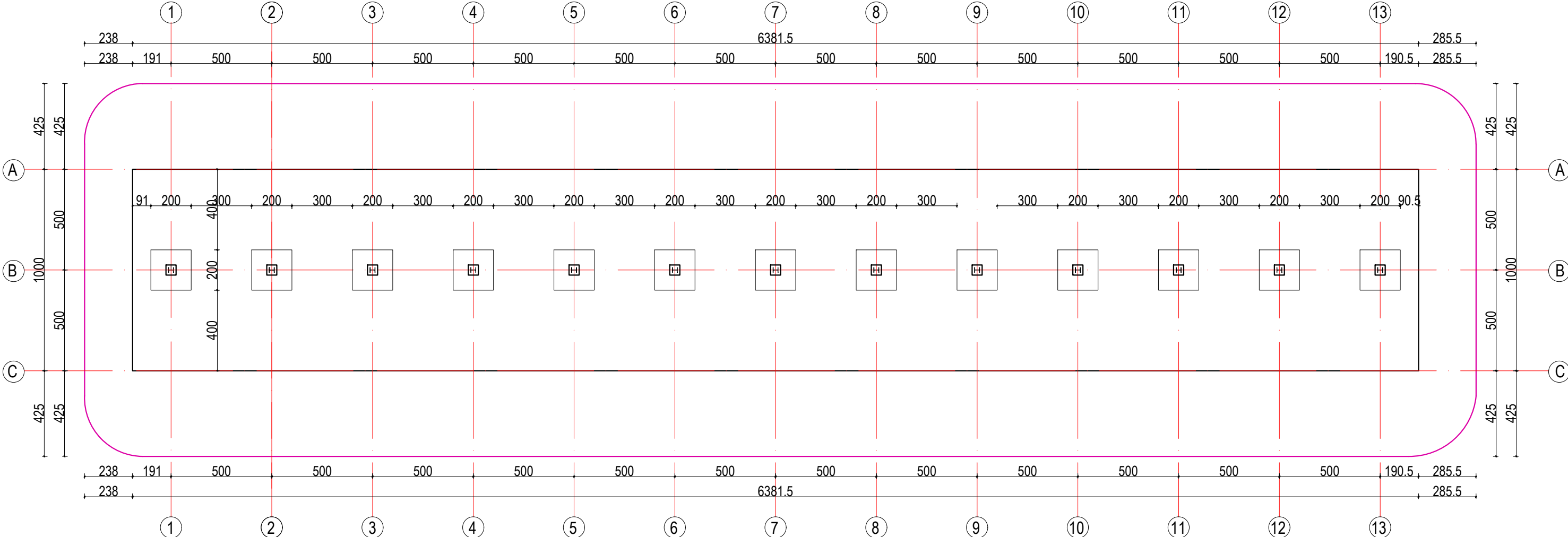
OBJEKTI: "NDËRTIMI I TREGUT DITOR NË TIRANA  
AGRIKULTURE, FARKË"

Ing. Hidroteknik	Filjana Veizaj	H/T.0110/8
Arkitekt	Bledi Lula	A.2008/1
Ing. Ndertimi	Reshit Bedhia	K.0305/3
Ing. Elektrik	Florian Lame	E.1631
Ing. Elektrik	Fatmira Shyti	E.0462/2
Topograf	Blerim Lama	T.1180/1

B.O.E : "INFRATECH, TESLA VISION &  
ENGINEERING CONSULTING GROUP" sh.p.k

FAZA	PROJEKT ZBATIMI	Plani Piketimit te Kolonave Platforma Nr.2	
DORËZIM	1.0	SHKALLA	1/220
		Nr.I FLETES	K-02

### Plani i themeleve Platformes nr.1 Sh.1:220



**SHENIME TEKNIKE**  
 -BETONI I KOLONAVE C25/30 M 300 B-30  
 -CELIKU I KONSTRUKSIONIT B/A: S500, B500 C OSE EKUIVALENT  
 -CELIKU I STRUKTURAVE TE PERBERA METALIKE DO TE JETE I KLASIT S275



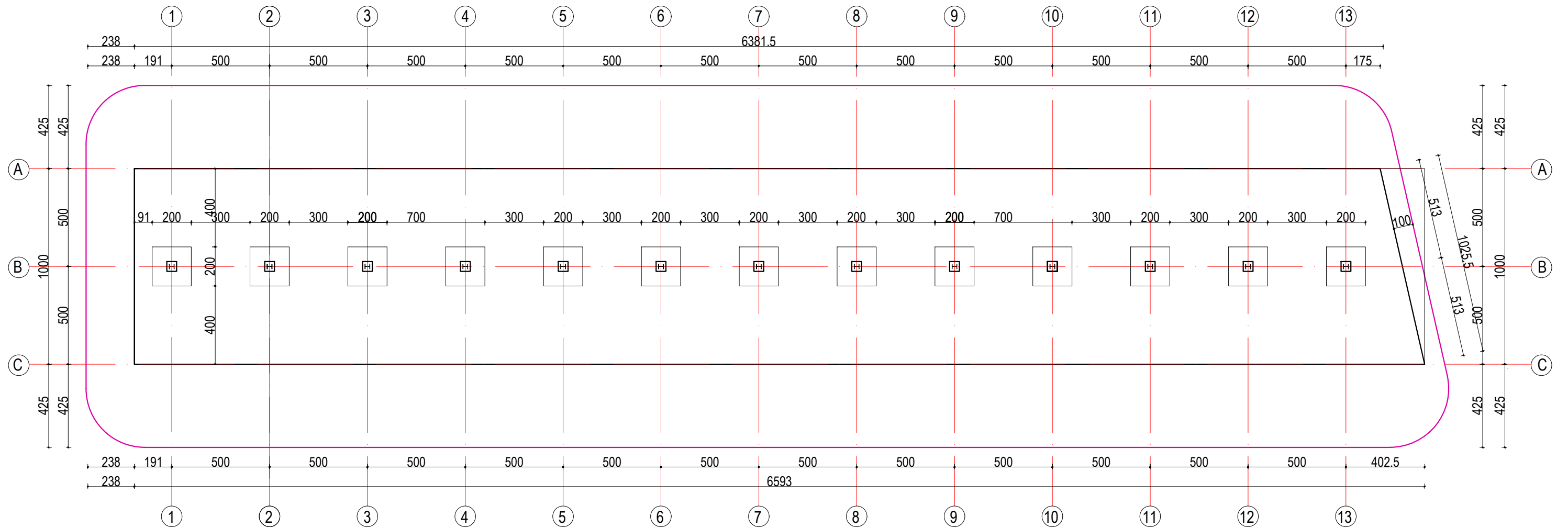
OBJEKTI: "NDËRTIMI I TREGUT DITOR NË TIRANA AGRIKULTURE, FARKË"

Ing. Hidroteknik	Filjana Veizaj	H/T.0110/8
Arkitekt	Bledi Lula	A.2008/1
Ing. Ndertimi	Reshit Bedhia	K.0305/3
Ing. Elektrik	Florian Lame	E.1631
Ing. Elektrik	Fatmira Shyti	E.0462/2
Topograf	Blerim Lama	T.1180/1

B.O.E : "INFRATECH, TESLA VISION & ENGINEERING CONSULTING GROUP" sh.p.k

FAZA	PROJEKT ZBATIMI	Plani i themeleve Platforma Nr.1	
DORËZIM	1.0	SHKALLA	1/220
		Nr.I FLETES	K-03

## Plani i piketimit te kolonave Platformes nr.2 Sh.1:220



### SHENIME TEKNIKE

- BETONI I KOLONAVE C25/30 M 300 B-30
- CELIKU I KONSTRUKSIONIT B/A: S500, B500 C OSE EKUIVALENT
- CELIKU I STRUKTURAVE TE PERBERA METALIKE DO TE JETE I KLASIT S275

BASHKIA TIRANË



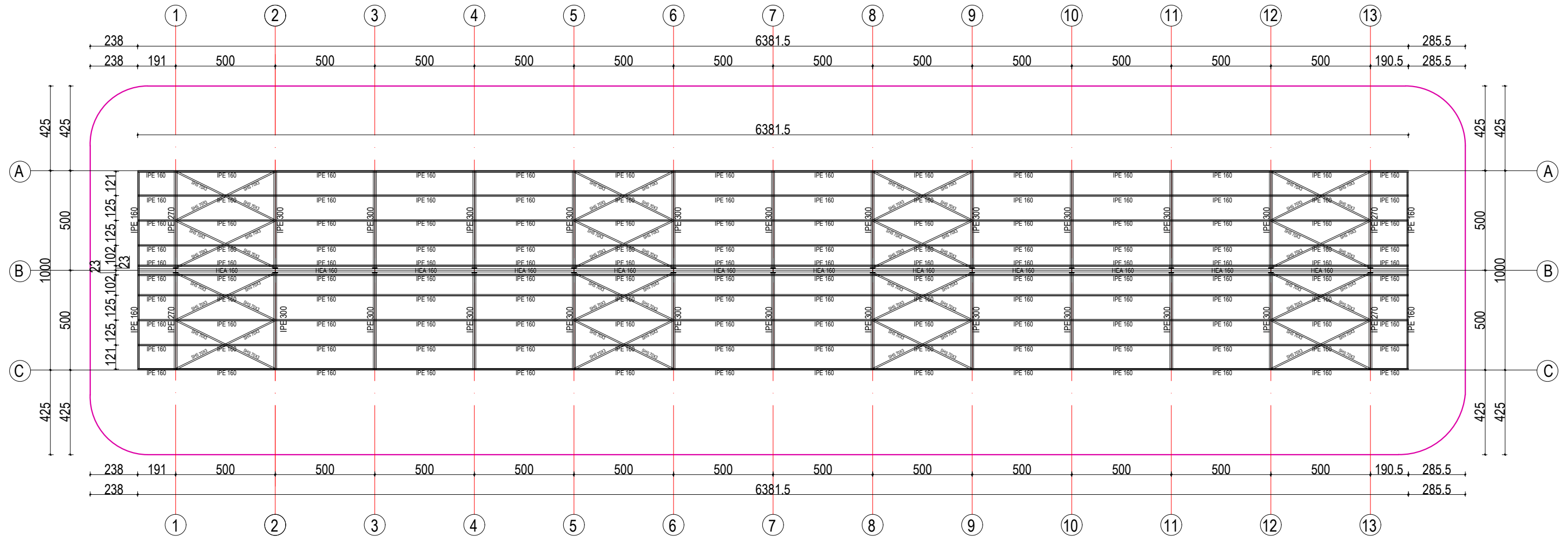
OBJEKTI: "NDËRTIMI I TREGUT DITOR NË TIRANA  
AGRIKULTURE, FARKË"

Ing. Hidroteknik	Filjana Veizaj	H/T.0110/8
Arkitekt	Bledi Lula	A.2008/1
Ing. Ndertimi	Reshit Bedhia	K.0305/3
Ing. Elektrik	Florian Lame	E.1631
Ing. Elektrik	Fatmira Shyti	E.0462/2
Topograf	Blerim Lama	T.1180/1

B.O.E : "INFRATECH, TESLA VISION &  
ENGINEERING CONSULTING GROUP" sh.p.k

FAZA	PROJEKT ZBATIMI	Plani i themeleve Platforma Nr.2	
DORËZIM	1.0	SHKALLA	1/220
		Nr.I FLETES	K-04

## Plani i Strukturave Mbulesa Platformes nr.1 Sh.1:220



### SHENIME TEKNIKE

- BETONI I KOLONAVE C25/30 M 300 B-30
- CELIKU I KONSTRUKSIONIT B/A: S500, B500 C OSE EKVIVALENT
- CELIKU I STRUKTURAVE TE PERBERA METALIKE DO TE JETE I KLASIT S275

BASHKIA TIRANË



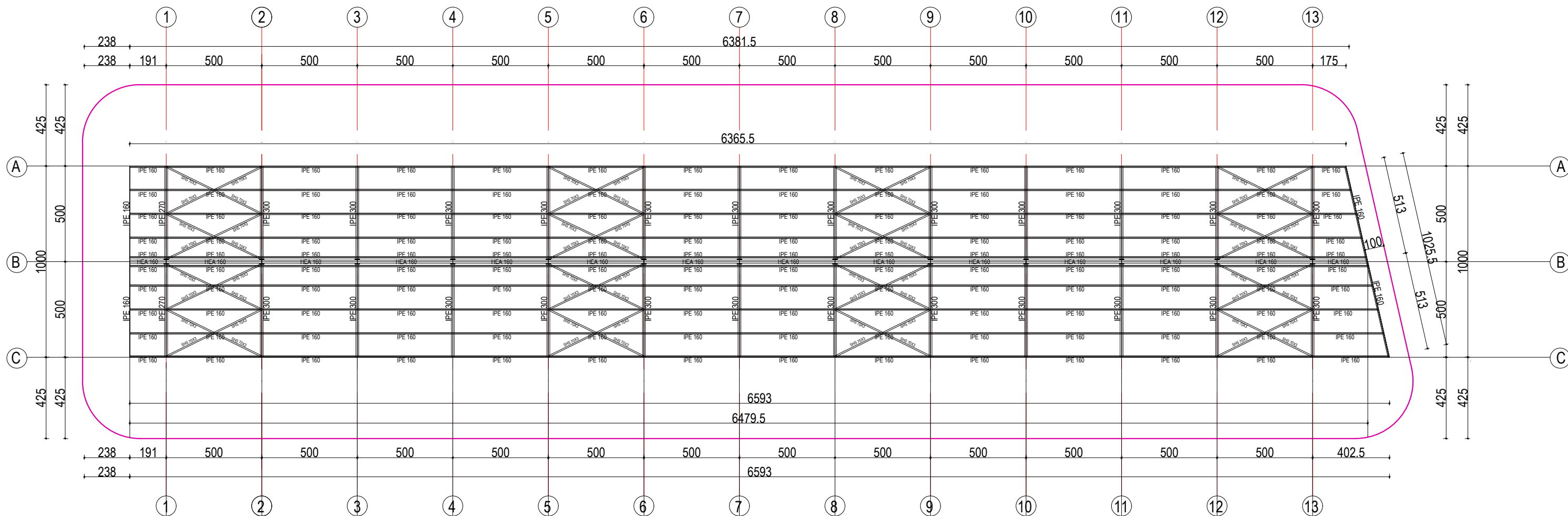
OBJEKTI: "NDËRTIMI I TREGUT DITOR NË TIRANA  
AGRIKULTURE, FARKË"

Ing. Hidroteknik	Filjana Veizaj	H/T.0110/8
Arkitekt	Bledi Lula	A.2008/1
Ing. Ndertimi	Reshit Bedhia	K.0305/3
Ing. Elektrik	Florian Lame	E.1631
Ing. Elektrik	Fatmira Shyti	E.0462/2
Topograf	Blerim Lama	T.1180/1

B.O.E : "INFRATECH, TESLA VISION &  
ENGINEERING CONSULTING GROUP" sh.p.k

FAZA	PROJEKT ZBATIMI	Plani i strukturave te mbuleses platforma nr.1	
DORËZIM	1.0	SHKALLA	1/220
		Nr.I FLETES	K-05

## Plani i strukturave mbulesa e Platformes nr.2 Sh.1:220



### SHENIME TEKNIKE

- BETONI I KOLONAVE C25/30 M 300 B-30
- CELIKU I KONSTRUKSIONIT B/A: S500, B500 C OSE EKVIVALENT
- CELIKU I STRUKTURAVE TE PERBERA METALIKE DO TE JETE I KLASIT S275

BASHKIA TIRANË



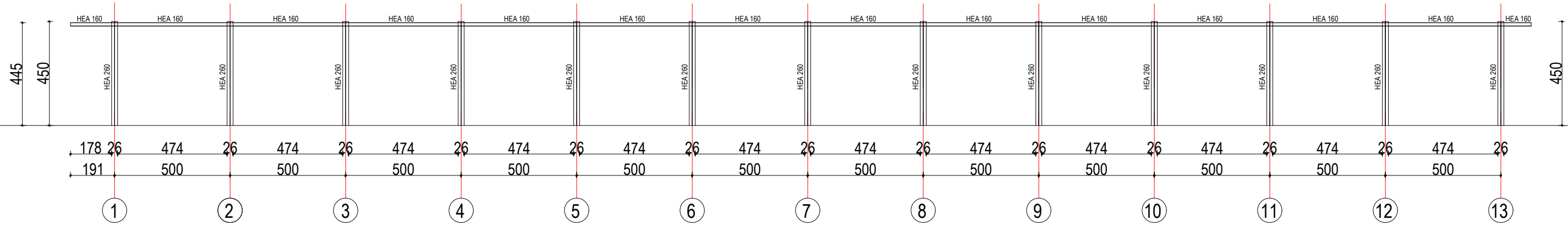
OBJEKTI: "NDËRTIMI I TREGUT DITOR NË TIRANA  
AGRIKULTURE, FARKË"

Ing. Hidroteknik	Filjana Veizaj	H/T.0110/8
Arkitekt	Bledi Lula	A.2008/1
Ing. Ndertimi	Reshit Bedhiaj	K.0305/3
Ing. Elektrik	Florian Lame	E.1631
Ing. Elektrik	Fatmira Shyti	E.0462/2
Topograf	Blerim Lama	T.1180/1

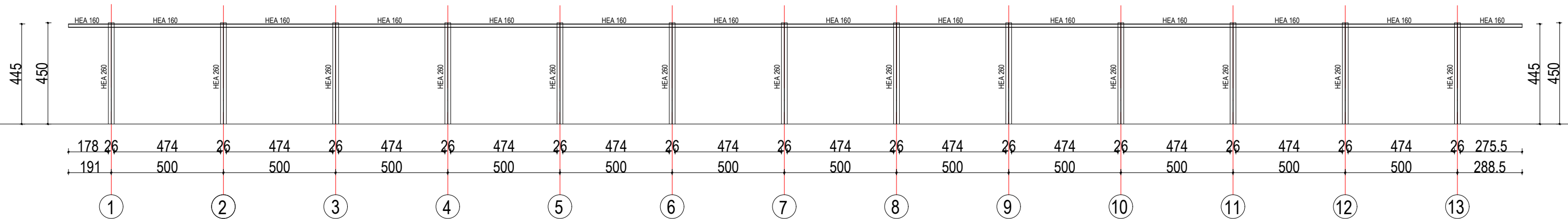
B.O.E : "INFRATECH, TESLA VISION &  
ENGINEERING CONSULTING GROUP" sh.p.k

FAZA	PROJEKT ZBATIMI	Plani i strukturave te mbuleses platforma nr.2	
DORËZIM	1.0	SHKALLA	1/220
		Nr.I FLETES	K-05

## Rama Aksi "B" Platformes nr.1 Sh.1:220



## Rama Aksi "B" Platformes nr.2 Sh.1:220



### SHENIME TEKNIKE

- BETONI I KOLONAVE C25/30 M 300 B-30
- CELIKU I KONSTRUKSIONIT B/A: S500, B500 C OSE EKVIVALENT
- CELIKU I STRUKTURAVE TE PERBERA METALIKE DO TE JETE I KLASIT S275

BASHKIA TIRANË



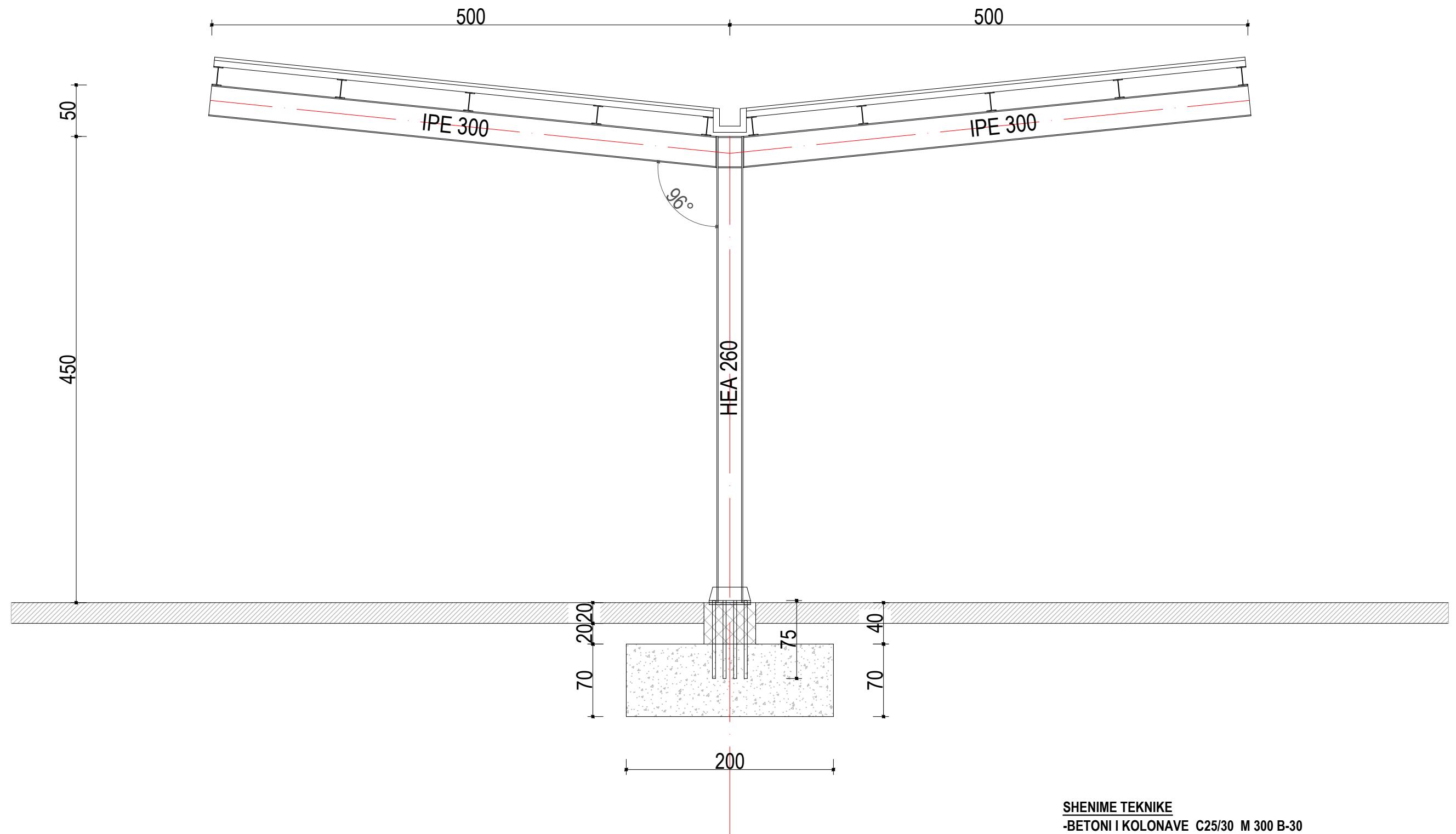
OBJEKTI: "NDËRTIMI I TREGUT DITOR NË TIRANA  
AGRIKULTURE, FARKË"

Ing. Hidroteknik	Filjana Veizaj	H/T.0110/8
Arkitekt	Bledi Lula	A.2008/1
Ing. Ndertimi	Reshit Bedhia	K.0305/3
Ing. Elektrik	Florian Lame	E.1631
Ing. Elektrik	Fatmira Shyti	E.0462/2
Topograf	Blerim Lama	T.1180/1

B.O.E : "INFRATECH, TESLA VISION &  
ENGINEERING CONSULTING GROUP" sh.p.k

FAZA	PROJEKT ZBATIMI	Rama Aksi "B" Platforma Nr1 dhe Nr2	
DORËZIM	1.0	SHKALLA	1/220
		Nr.I FLETES	K-07

# Rama Tip Sh.1:50



- SHENIME TEKNIKE**
- BETONI I KOLONAVE C25/30 M 300 B-30
  - CELIKU I KONSTRUKSIONIT B/A: S500, B500 C OSE EKUIVALENT
  - CELIKU I STRUKTURAVE TE PERBERA METALIKE DO TE JETE I KLASIT S275

BASHKIA TIRANË



OBJEKTI: "NDËRTIMI I TREGUT DITOR NË TIRANA  
AGRIKULTURE, FARKË"

Ing. Hidroteknik	Filjana Veizaj	H/T.0110/8
Arkitekt	Bledi Lula	A.2008/1
Ing. Ndertimi	Reshit Bedhia	K.0305/3
Ing. Elektrik	Florjan Lame	E.1631
Ing. Elektrik	Fatmira Shyti	E.0462/2
Topograf	Blerim Lamej	T.1180/1

B.O.E : "INFRA TECH, TESLA VISION &  
ENGINEERING CONSULTING GROUP" sh.p.k

FAZA

PROJEKT ZBATIMI

Rama Tip, Platforma Nr.1 dhe Nr.2

DORËZIM

1.0

SHKALLA

1/50

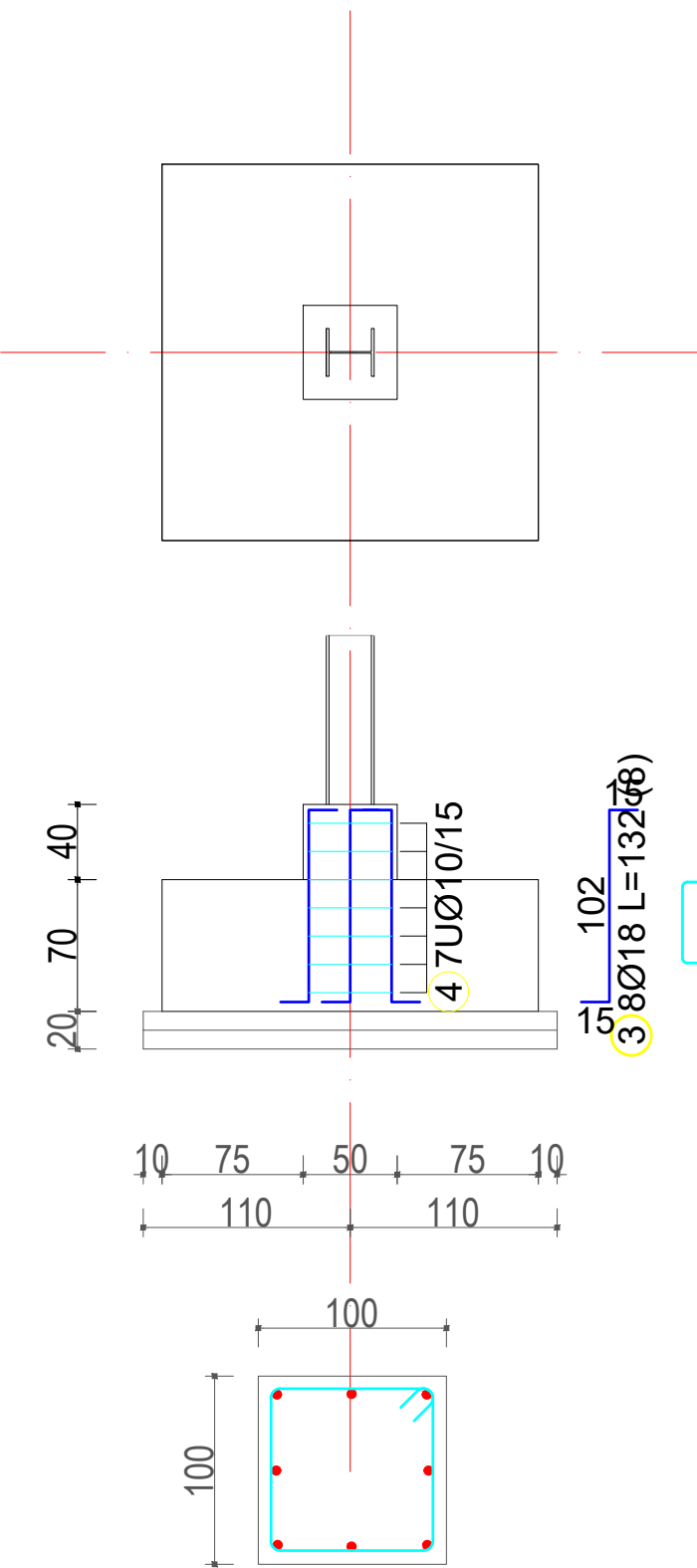
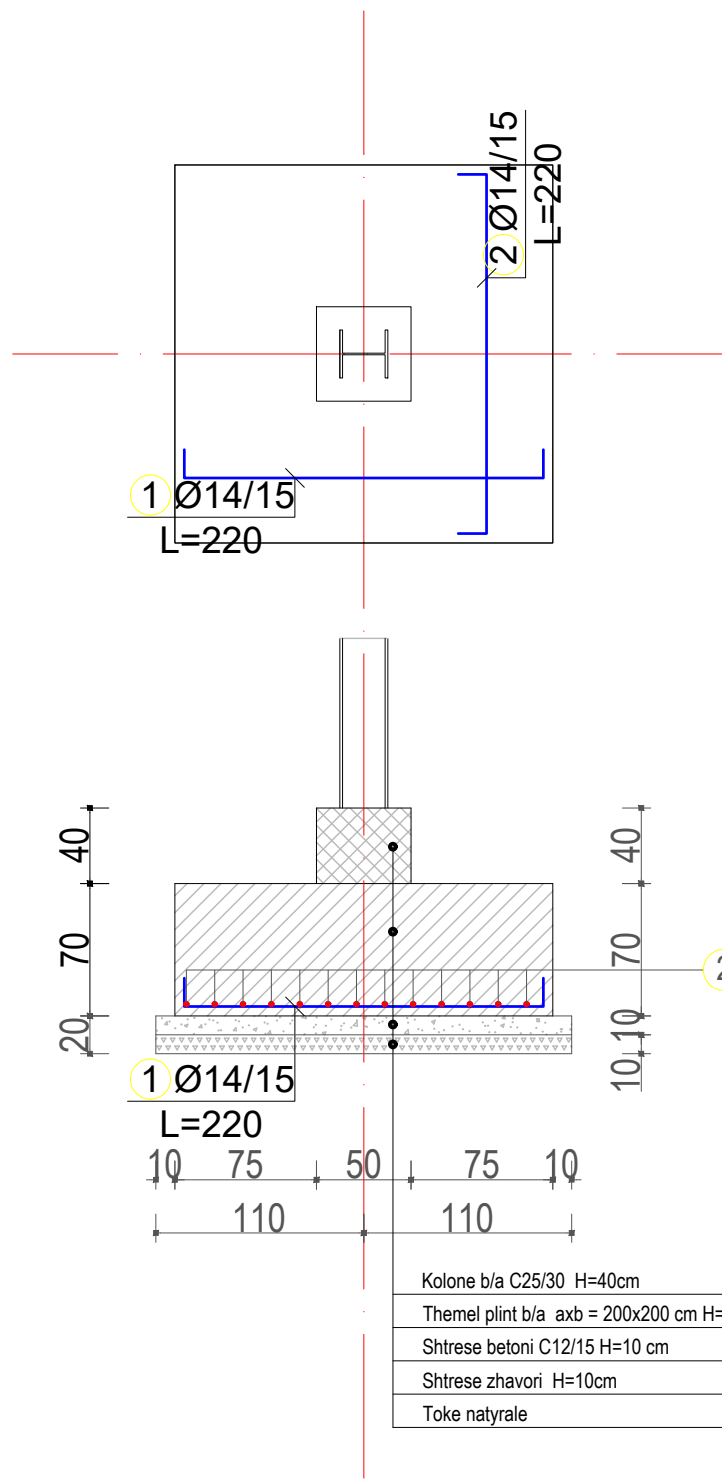
Nr./ FLETES

K-08



# Armimi Plinti 1 Sh.1:50

# Armimi kolones Sh.1:50



Specifikimi i armatures						
nr.	forma dhe dimensione [cm]	Ø	lg [m]	n [pcs.]	lgn [m]	Remark
Armimi Plinti 1 (1 cope.)						
1		14	2.20	14	30.80	
2		14	2.20	14	30.80	
3		18	1.32	8	10.56	
4		10	1.88	7	13.16	
5		10	1.52	4	6.08	

totali per 1 plint dhe koke kolone			
Ø [mm]	lgn [m]	pesha njesi [kg/m <sup>3</sup> ]	pesha [kg]
stafa			
10	19.24	0.62	11.87
14	61.60	1.21	74.41
18	10.56	2.00	21.10
Total (GA)			107.38

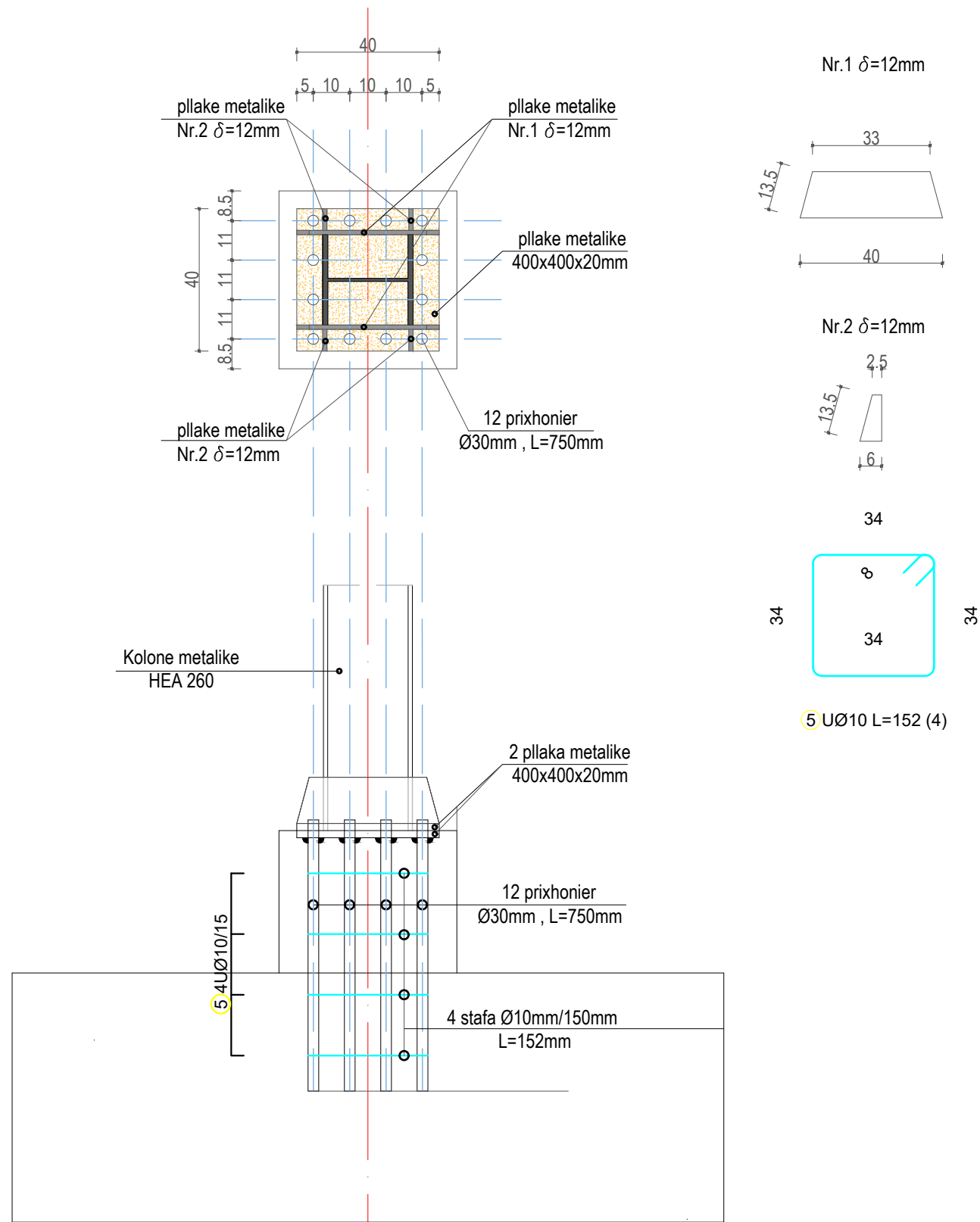
Kolone b/a C25/30 H=40cm  
 Themel plint b/a axb = 200x200 cm H=10cm  
 Shtrese betoni C12/15 H=10 cm  
 Shtrese zhavori H=10cm  
 Toke natyrale

4 Stafa UØ10 L=188

**SHENIME TEKNIKE**  
 -BETONI I KOLONAVE C25/30 M 300 B-30  
 -CELIKU I KONSTRUKSIONIT B/A: S500, B500 C OSE EKUIVALENT  
 -CELIKU I STRUKTURAVE TE PERBERA METALIKE DO TE JETE I KLASIT S275

BASHKIA TIRANË		OBJEKTI: "NDËRTIMI I TREGUT DITOR NË TIRANA AGRIKULTURE, FARKË"	Ing. Hidroteknik	Filjana Veizaj	H/T.0110/8	B.O.E : "INFRATECH, TESLA VISION & ENGINEERING CONSULTING GROUP" sh.p.k	FAZA	PROJEKT ZBATIMI	Armimi i Plintit dhe Qafes se Plintit Tip	
			Arkitekt	Bledi Lula	A.2008/1					
			Ing. Ndertimi	Reshit Bedhia	K.0305/3		DORËZIM	1.0	Nr./ FLETES	K-09
			Ing. Elektrik	Florjan Lari	E.1631					
			Ing. Elektrik	Fatmira Shyti	E.0462/2					
			Topograf	Blerim Lama	T.1180/1					

# Detaje mberdhimi kolona metalike Sh.1:50



### SHENIME TEKNIKE

- BETONI I KOLONAVE C25/30 M 300 B-30
- CELIKU I KONSTRUKSIONIT B/A: S500, B500 C OSE EKUIVALENT
- CELIKU I STRUKTURAVE TE PERBERA METALIKE DO TE JETE I KLASIT S275

BASHKIA TIRANË



OBJEKTI: "NDËRTIMI I TREGUT DITOR NË TIRANA AGRIKULTURE, FARKË"

Ing. Hidroteknik	Filjana Veizaj	H/T.0110/8
Arkitekt	Bledi Lula	A.2008/1
Ing. Ndertimi	Reshit Bedhia	K.0305/3
Ing. Elektrik	Florjan Lame	E.1631
Ing. Elektrik	Fatmira Shyti	E.0462/2
Topograf	Blerim Lama	T.1180/1

B.O.E : "INFRATECH, TESLA VISION & ENGINEERING CONSULTING GROUP" sh.p.k

FAZA

PROJEKT ZBATIMI

Detaje tip Mberthimi Kolona metalike

DORËZIM

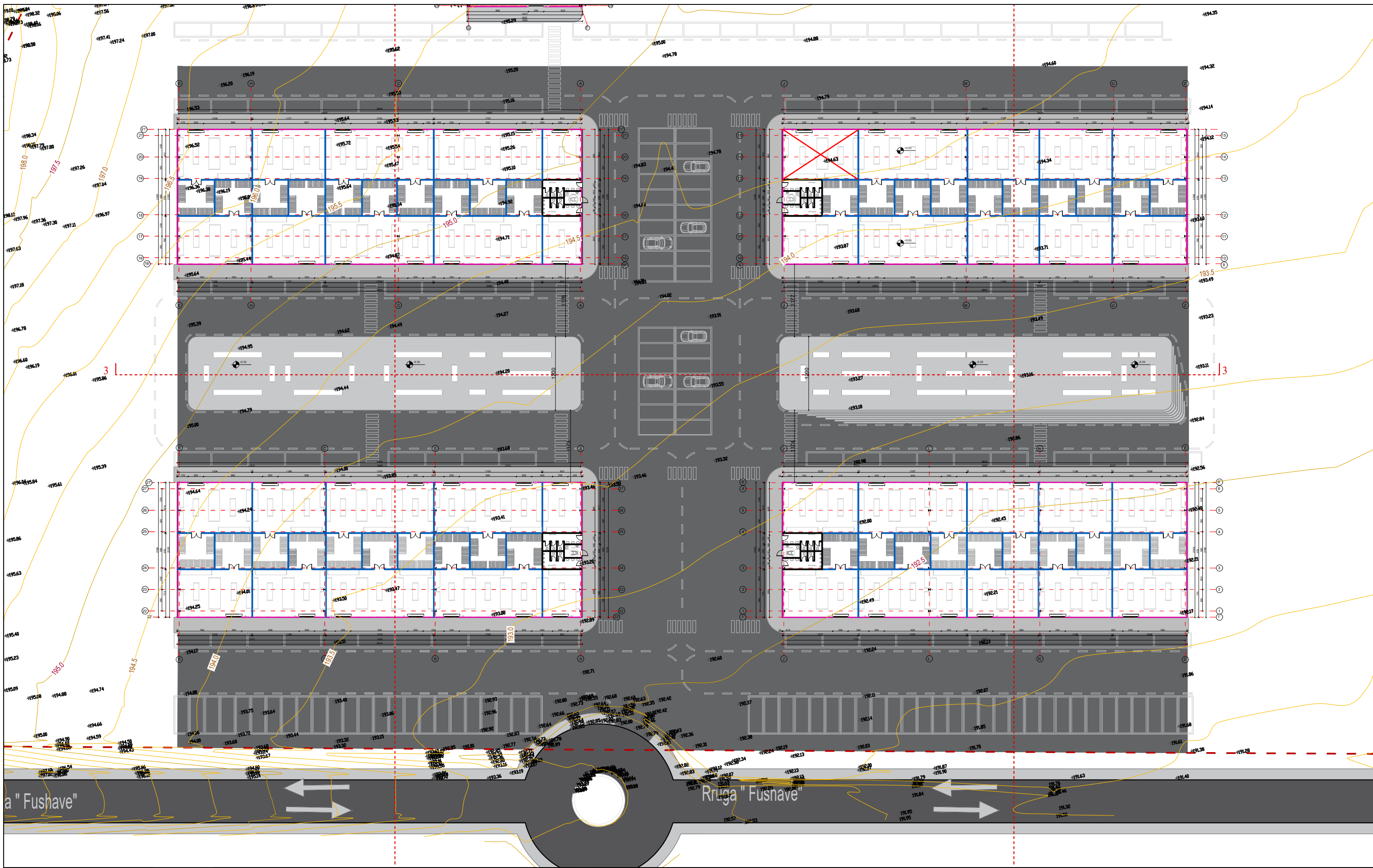
1.0

SHKALLA

1/50

Nr.1 FLETES

K-10



BASHKIA TIRANË



OBJEKTI: "NDËRTIMI I TREGUT DITOR NË TIRANA  
AGRIKULTURE, FARKË"

Ing. Hidroteknik	Filjana Veizaj	H/T.0110/8
Arkitekt	Bledi Lula	A.2008/1
Ing. Ndërtimi	Reshit Bedhia	K.0305/3
Ing. Elektrik	Florjan Lame	E.1631
Ing. Elektrik	Fatmira Shyti	E.0462/2
Topograf	Blerim Lamaj	T.1180/1

B.O.E : "INFRATECH, TESLA VISION &  
ENGINEERING CONSULTING GROUP" sh.p.k

FAZA

DORËZIM

PROJEKT ZBATIMI

1.0

Plani Topografik

SHKALLA

Nr.I FLETES

1/250

K-11



BASHKIA TIRANË



OBJEKTI: "NDËRTIMI I TREGUT DITOR NË TIRANA  
AGRIKULTURE, FARKË"

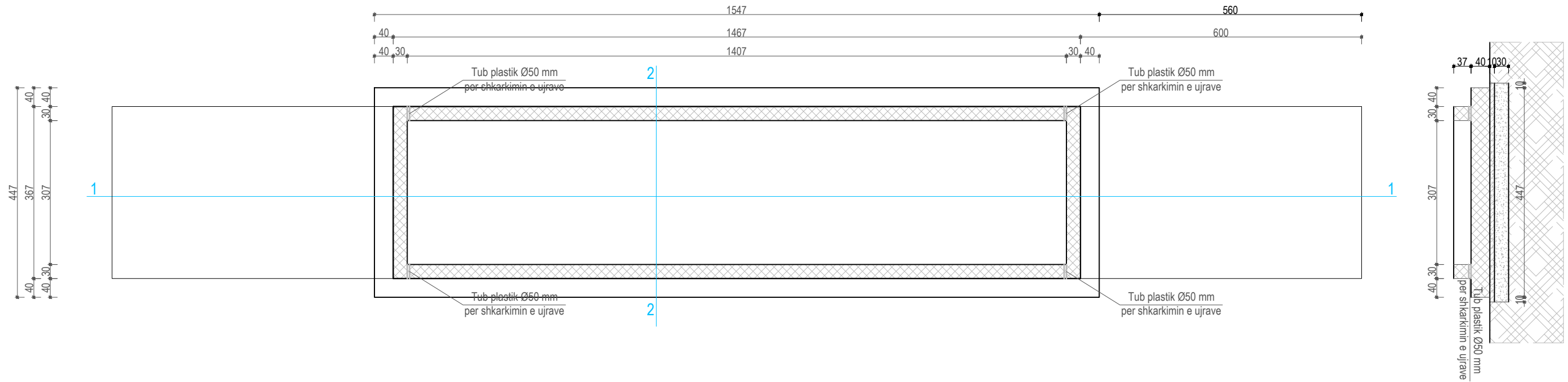
Ing. Hidroteknik	Filjana Veizaj	H/T.0110/8
Arkitekt	Bledi Lula	A.2008/1
Ing. Ndërtimi	Reshit Bedhia	K.0305/3
Ing. Elektrik	Florjan Lame	E.1631
Ing. Elektrik	Fatmira Shyti	E.0462/2
Topograf	Blerim Lamaj	T.1180/1

B.O.E : "INFRATECH, TESLA VISION &  
ENGINEERING CONSULTING GROUP" sh.p.k

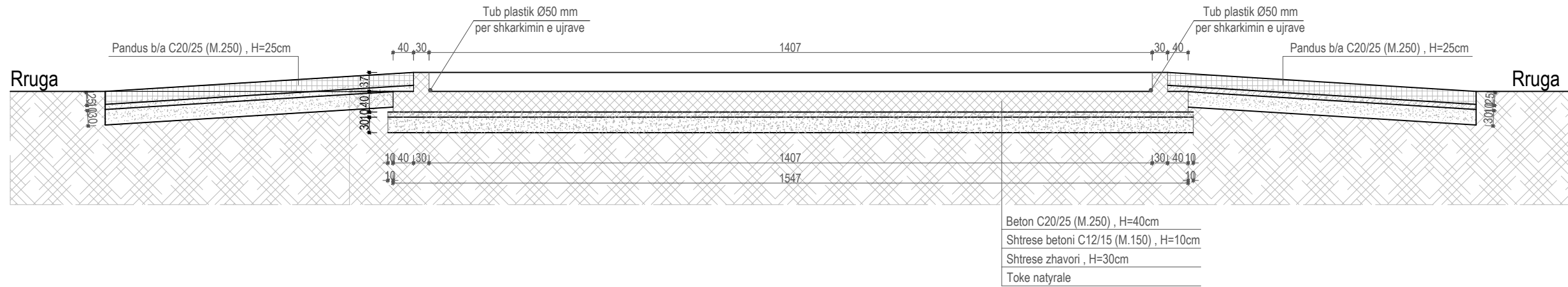
FAZA	PROJEKT ZBATIMI		Objektet ku do te aplikohet rezina epoksike	
	DORËZIM	1.0	SHKALLA	1/250
			Nr.I FLETES	K-12

### PLANI I BAZAMANTIT PESHORES Sh.1:100

### Prerja 2-2 Sh.1:100



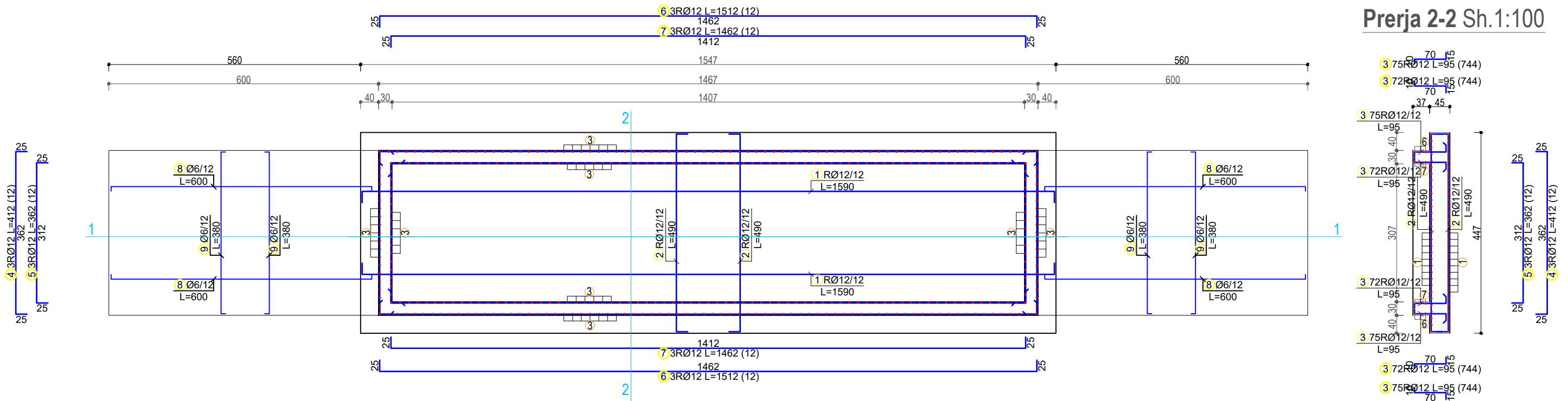
### Prerja 1-1 Sh.1:100



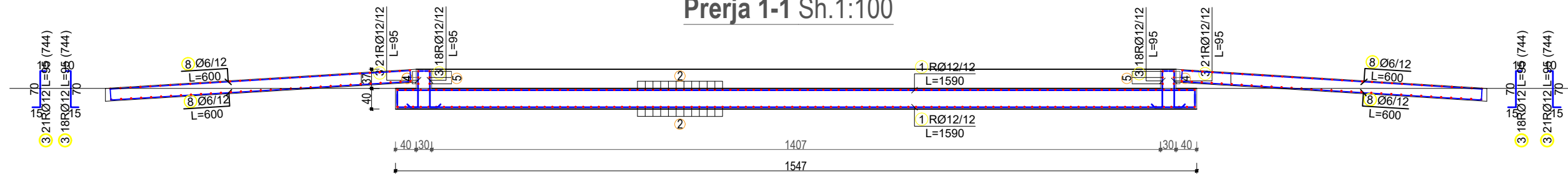
Ing. Hidroteknik	Filjana Veizaj	H/T.0110/8
Arkitekt	Bledi Lula	A.2008/1
Ing. Ndertimi	Reshit Bedhia	K.0305/3
Ing. Elektrik	Florian Lame	E.1631
Ing. Elektrik	Fatmira Shyti	E.0462/2
Topograf	Blerim Lama	T.1180/1

FAZA	PROJEKT ZBATIMI	EMERTIMI I FLETES	
DORËZIM	1.0	SHKALLA	1/250
		Nr.I FLETES	K-11

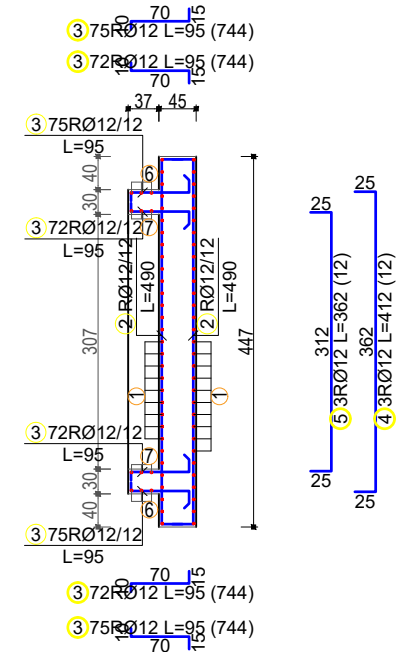
# ARMIMI I BAZAMANTIT PESHORES Sh.1:100



Prerja 1-1 Sh.1:100



Prerja 2-2 Sh.1:100



Specifikimi i Armatures						
mark	Forma dhe permasa [cm]	Ø	lg [m]	n [pcs.]	lgn [m]	Shen.
Armimi i bazamentit peshores elektronike (1 cope.)						
1		12	15.90	62	985.80	
2		12	4.90	208	1019.20	
3		12	0.95	744	706.80	
4		12	4.12	12	49.44	
5		12	3.62	12	43.44	

Specifikimi i Armatures						
Nr.	Forma dhe permasa [cm]	Ø	lg [m]	n [pcs.]	lgn [m]	Shen.
6		12	15.12	12	181.44	
7		12	14.62	12	175.44	
8		6	6.00	76	456.00	
9		6	3.80	124	471.20	

Tabela permbledhese e hekurit			
Ø [mm]	lgn [m]	Pesha Njesi [kg/m³]	Pesha [kg]
GA			
6	927.20	0.22	205.84
Total (GA)			205.84
RA1			
12	3161.56	0.92	2908.64
Total (RA1)			2908.64
Total			3114.47

**SHENIME TEKNIKE**  
 -Betoni i shtresave C12/15 (M.150)  
 -Betoni i themeleve C20/25 (M.250)  
 -Betoni i konstruksionit C20/25 (M.250)  
 -Ndemjet e lejuara ne toke σ = 1.8KG/CM2  
 -Hekuri i klasit S500 ose ekuivalent

BASHKIA TIRANË

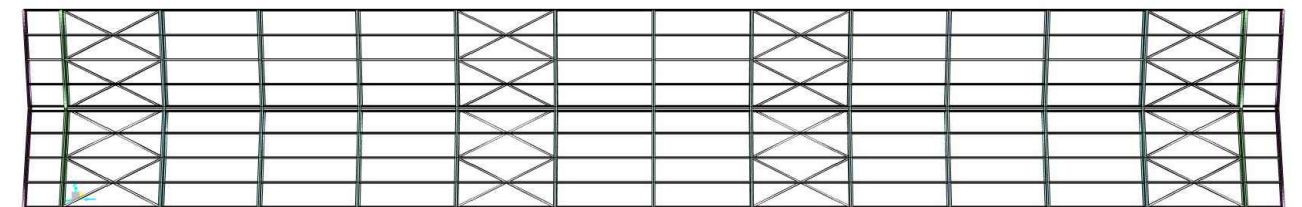
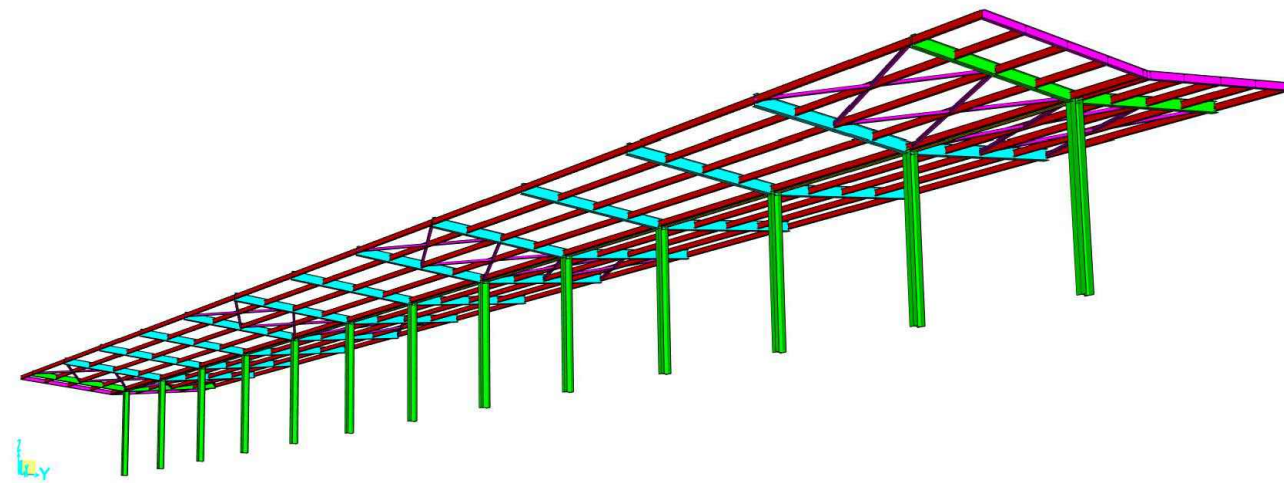
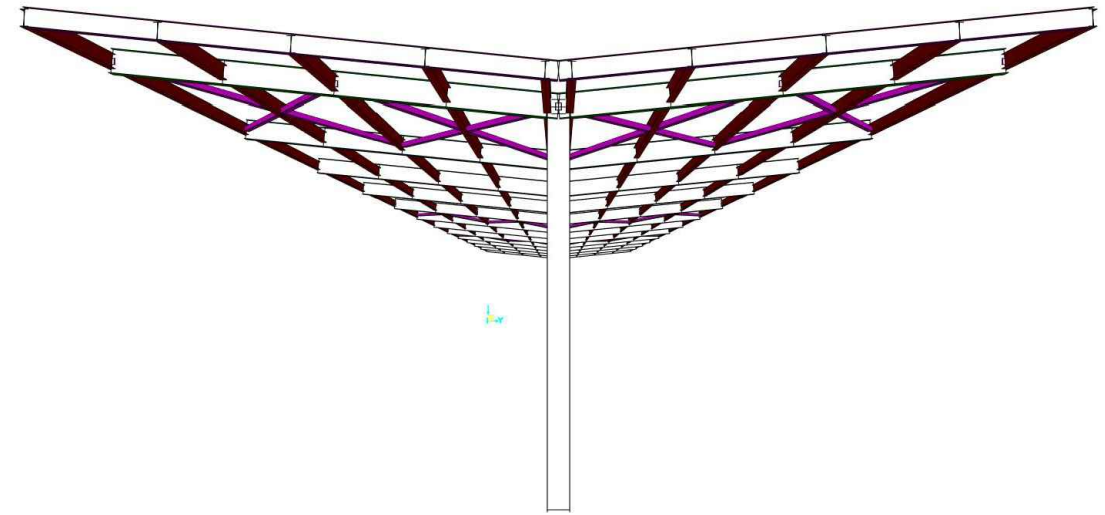
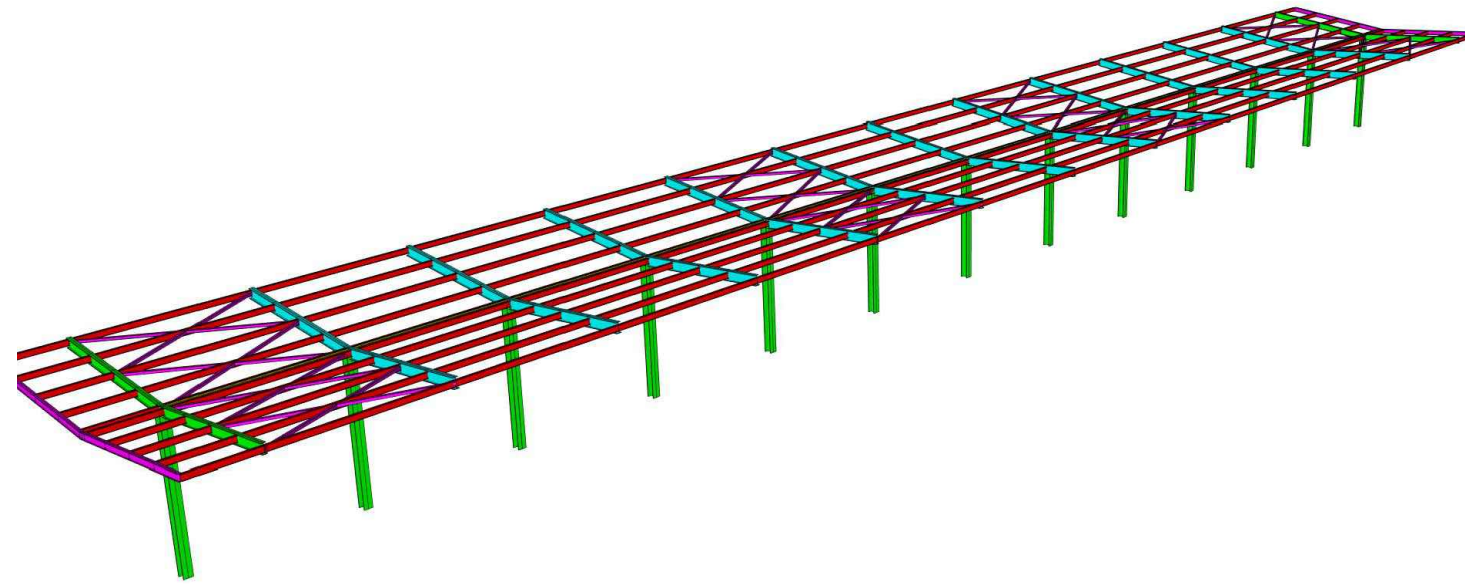


OBJEKTI: "NDËRTIMI I TREGUT DITOR NË TIRANA AGRIKULTURE, FARKË"

Ing. Hidroteknik	Filjana Veizaj	H/T.0110/8
Arkitekt	Bledi Lula	A.2008/1
Ing. Ndertimi	Reshit Bedhia	K.0305/3
Ing. Elektrik	Florian Lame	E.1631
Ing. Elektrik	Fatmira Shyti	E.0462/2
Topograf	Blerim Lama	T.1180/1

B.O.E : "INFRATECH, TESLA VISION & ENGINEERING CONSULTING GROUP" sh.p.k

FAZA	PROJEKT ZBATIMI	EMERTIMI I FLETES	
DORËZIM	1.0	SHKALLA	1/250
		Nr.I FLETES	K-14



BASHKIA TIRANË

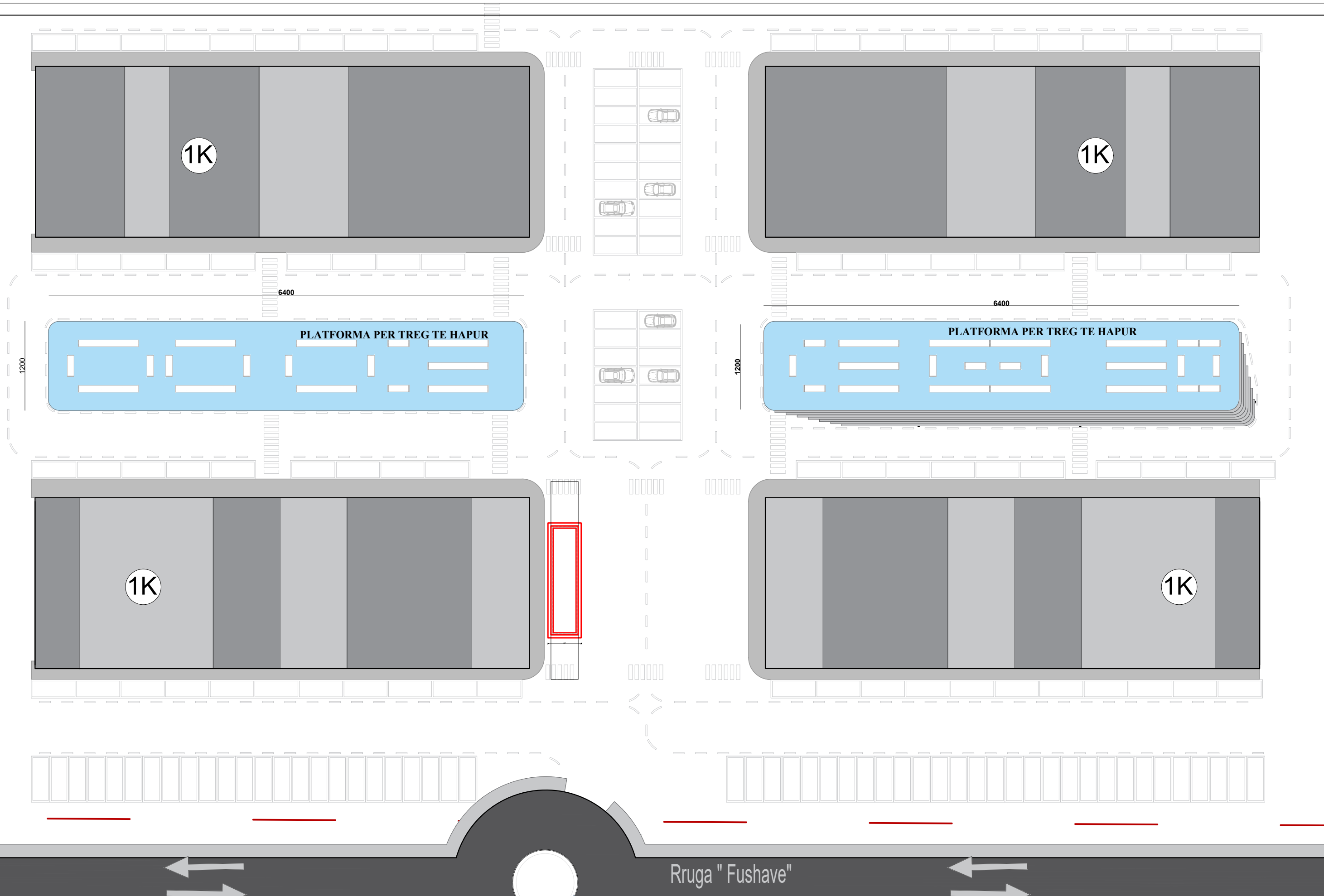


OBJEKTI: "NDËRTIMI I TREGUT DITOR NË TIRANA  
AGRIKULTURE, FARKË"

Ing. Hidroteknik	Filjana Veizaj	H/T.0110/8
Arkitekt	Bledi Lula	A.2008/1
Ing. Ndertimi	Reshit Bedhia	K.0305/3
Ing. Elektrik	Florian Lame	E.1631
Ing. Elektrik	Fatmira Shyti	E.0462/2
Topograf	Blerim Lama	T.1180/1

B.O.E : "INFRATECH, TESLA VISION &  
ENGINEERING CONSULTING GROUP" sh.p.k

FAZA	PROJEKT ZBATIMI	IMAZHE 3D STRUKTURAT METALIKE	
DORËZIM	1.0	SHKALLA	1/250
		Nr.I FLETES	K-15



BASHKIA TIRANË



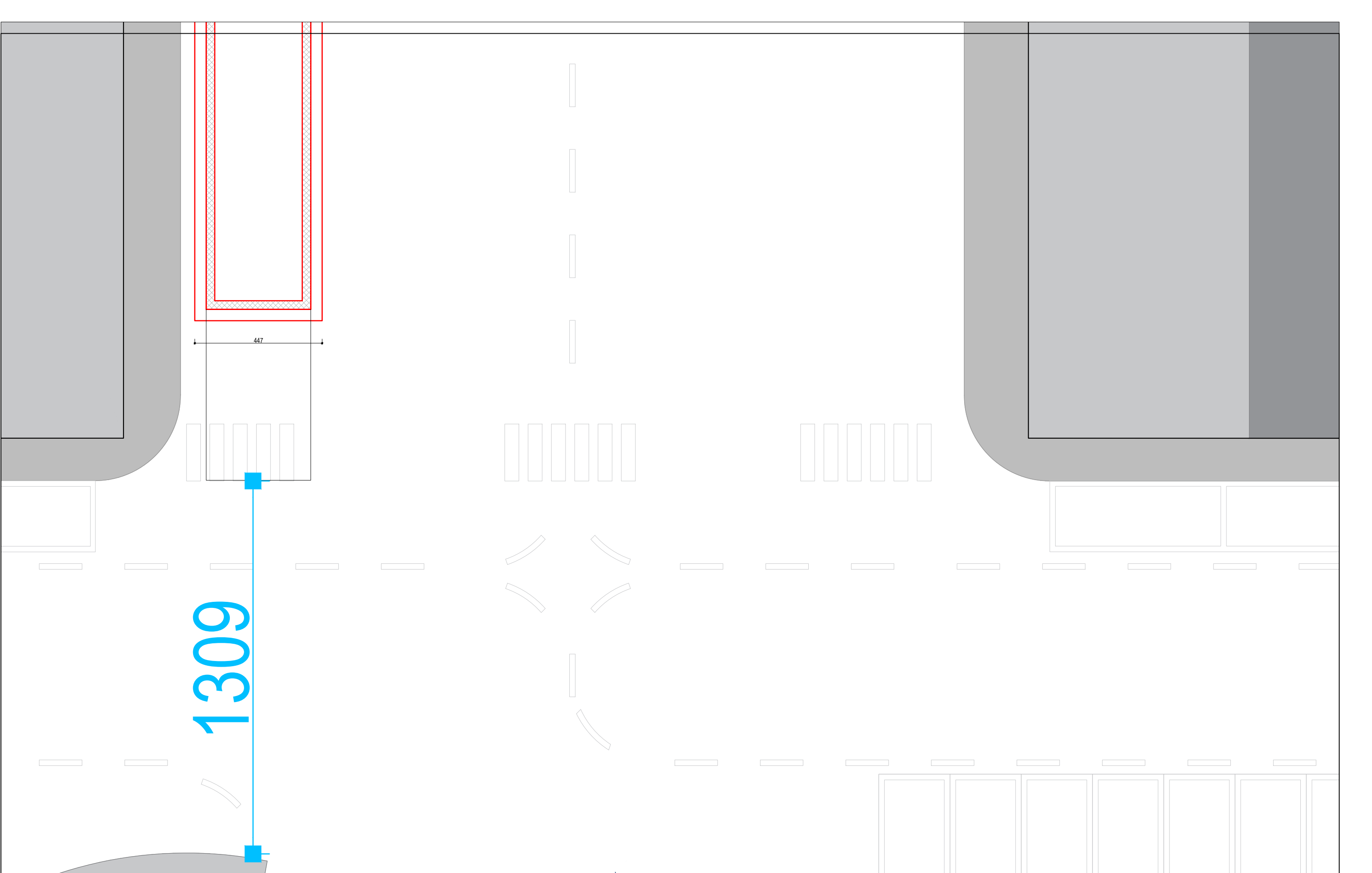
OBJEKTI: "NDËRTIMI I TREGUT DITOR NË TIRANA AGRIKULTURE, FARKË"

Ing. Hidroteknik	Filjana Veizaj	H/T.0110/8
Arkitekt	Bledi Lula	A.2008/1
Ing. Ndertimi	Reshit Bedhiaj	K.0305/3
Ing. Elektrik	Florian Lame	E.1631
Ing. Elektrik	Fatmira Shyti	E.0462/2
Topograf	Blerim Lama	T.1180/1

B.O.E : "INFRATECH, TESLA VISION & ENGINEERING CONSULTING GROUP" sh.p.k

FAZA	PROJEKT ZBATIMI	Plani i vendosjes se peshoreve	
DORËZIM	1.0	SHKALLA	1/250
		Nr.I FLETES	K-16





1309

447

BASHKIA TIRANË

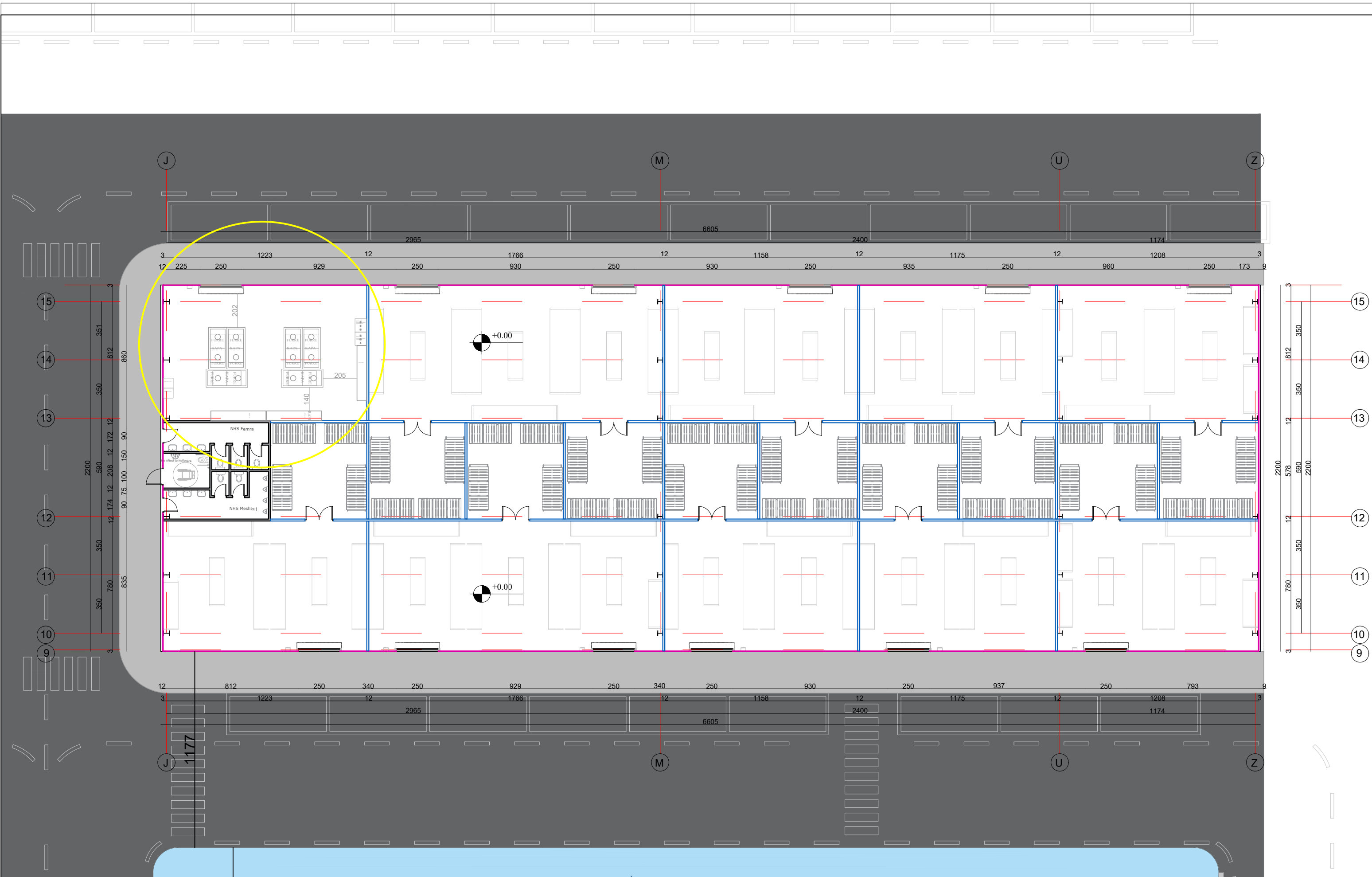


OBJEKTI: "NDËRTIMI I TREGUT DITOR NË TIRANA AGRIKULTURE, FARKË"

Ing. Hidroteknik	Filjana Veizaj	H/T.0110/8
Arkitekt	Bledi Lula	A.2008/1
Ing. Ndertimi	Reshit Bedhiaj	K.0305/3
Ing. Elektrik	Florian Lame	E.1631
Ing. Elektrik	Fatmira Shyti	E.0462/2
Topograf	Blerim Lama	T.1180/1

B.O.E : "INFRA TECH, TESLA VISION & ENGINEERING CONSULTING GROUP" sh.p.k

FAZA	PROJEKT ZBATIMI	Plani i vendosjes se peshoreve	
DORËZIM	1.0	SHKALLA	1/250
		Nr.I FLETES	K-17



BASHKIA TIRANË



OBJEKTI: "NDËRTIMI I TREGUT DITOR NË TIRANA  
AGRIKULTURE, FARKË"

Ing. Hidroteknik	Filjana Veizaj	H/T.0110/8
Arkitekt	Bledi Lula	A.2008/1
Ing. Ndertimi	Reshit Bedhia	K.0305/3
Ing. Elektrik	Florian Lame	E.1631
Ing. Elektrik	Fatmira Shyti	E.0462/2
Topograf	Blerim Lama	T.1180/1

B.O.E : "INFRA TECH, TESLA VISION &  
ENGINEERING CONSULTING GROUP" sh.p.k

FAZA	PROJEKT ZBATIMI	Plani i pozicionimit te guzhines	
DORËZIM	1.0	SHKALLA	1/250
		Nr.I FLETES	K-18



BASHKIA TIRANË



OBJEKTI: "NDËRTIMI I TREGUT DITOR NË TIRANA AGRIKULTURE, FARKË"

Ing. Hidroteknik	Filjana Veizaj	H/T.0110/8
Arkitekt	Bledi Lula	A.2008/1
Ing. Ndertimi	Reshit Bedhiaj	K.0305/3
Ing. Elektrik	Florian Lame	E.1631
Ing. Elektrik	Fatmira Shyti	E.0462/2
Topograf	Blerim Lama	T.1180/1

B.O.E : "INFRATECH, TESLA VISION & ENGINEERING CONSULTING GROUP" sh.p.k

FAZA	PROJEKT ZBATIMI	Mobilimi i Guzhines	
DORËZIM	1.0	SHKALLA	1/250
		Nr.I FLETES	K-19