

# PROJEKT I MBROJTJES NDAJ ZJARRIT

KOPSHTI NR.10

**ZHVILLUES: BASHKIA VLORË**

Ing.HIDRO NERMIN JONUZI HT.0222/3  
EKSPERTE PRIVAT ZJARRFIKES  
LEJE MZSH NR 1020

# PROJEKT I MBROJTJES NDAJ ZJARRIT

## PERMBAJTJA:

MKZ-01. PLANVENDOSJE

MKZ -02. PLANI ARKITEKTONIK I MKZ - KATI PERDHE

MKZ 03. PLANI ARKITEKTONIKI MKZ - KATI PARE

MKZ -04. PLANI KONSTRUKTIV I MKZ - KATI PERDHE

MKZ 05. PLANI KONSTRUKTIV I MKZ - KATI PARE

MKZ -06. PLANI MEKANIK I MKZ - KATI PERDHE

MKZ 07. PLANI MEKANIK I MKZ - KATI PARE

MKZ -08. PLANI I EVAKUIMIT I MKZ - KATI PERDHE

MKZ 09. PLANI I EVAKUIMIT I MKZ - KATI PARE

MKZ -10. PLANI ELEKTRIK I MKZ - KATI PERDHE

MKZ 11. PLANI ELEKTRIK I MKZ - KATI PARE

MKZ -12. PLANI HIDRIK I MKZ - KATI PERDHE

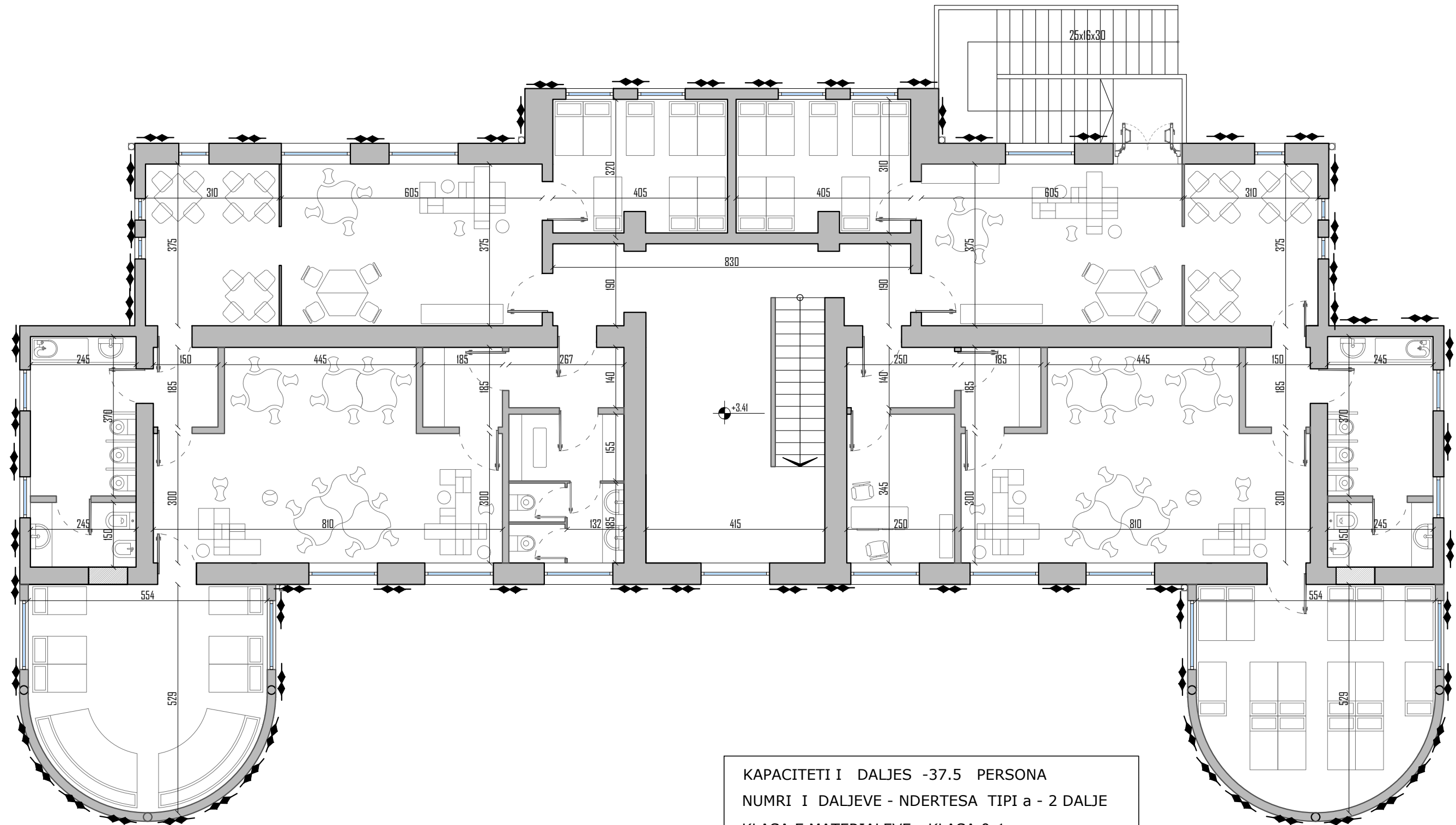
MKZ 13. PLANI HIDRIK I MKZ - KATI PARE

MKZ 14. DETAJE PER MKZ



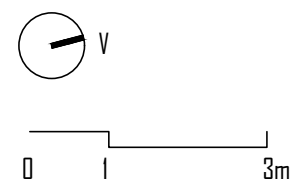
# PLANIMETRI KATI I PARE

## PLANI ARKITEKTONIK I MKZ



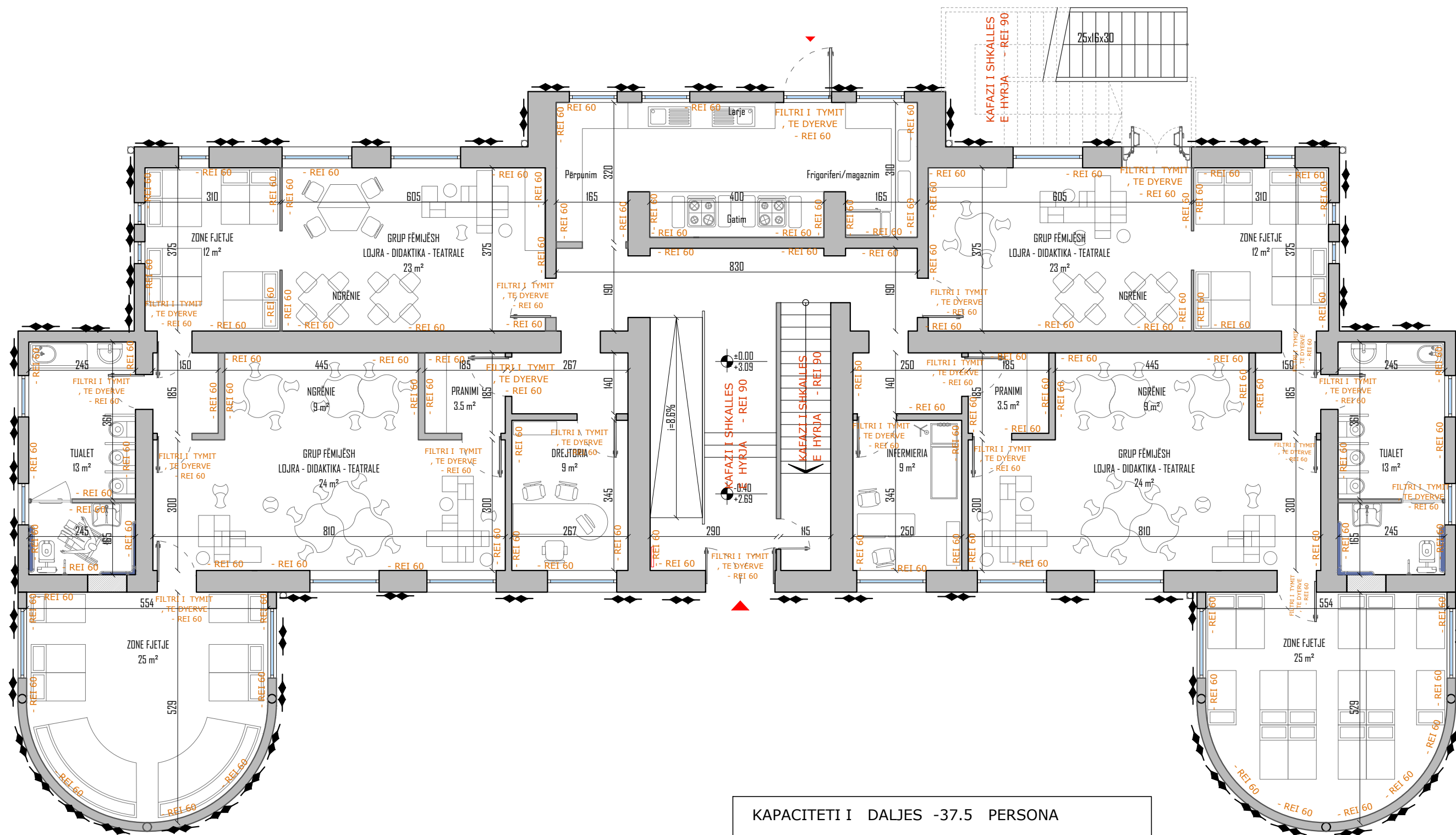
◆◆ Vleresimi i rezistences ( REI ) 2ore  
"Lartesia antizjarr" - Tipi a- 0-24 m  
- Tipi b- 24-54 m  
- Tipi c- 54-80 m  
- Tipi d- mbi 80 m

KAPACITETI I DALJES -37.5 PERSONA  
NUMRI I DALJEVE - NDERTESA TIPI a - 2 DALJE  
KLASA E MATERIALEVE - KLASA 0-1  
NDERKATET E NDARJET E MUREVE - REI 60  
FILTRI I TYMIT , TE DYERVE - REI 60  
KAFAZI I SHKALLES E HYRJA - REI 90  
SIPERFAQE E NJESISE SE SHERBIMIT =88.6M2




# PLANIMETRI KATI PERDHE

## PLANI KONSTRUKTIV I MKZ



0 1 3m

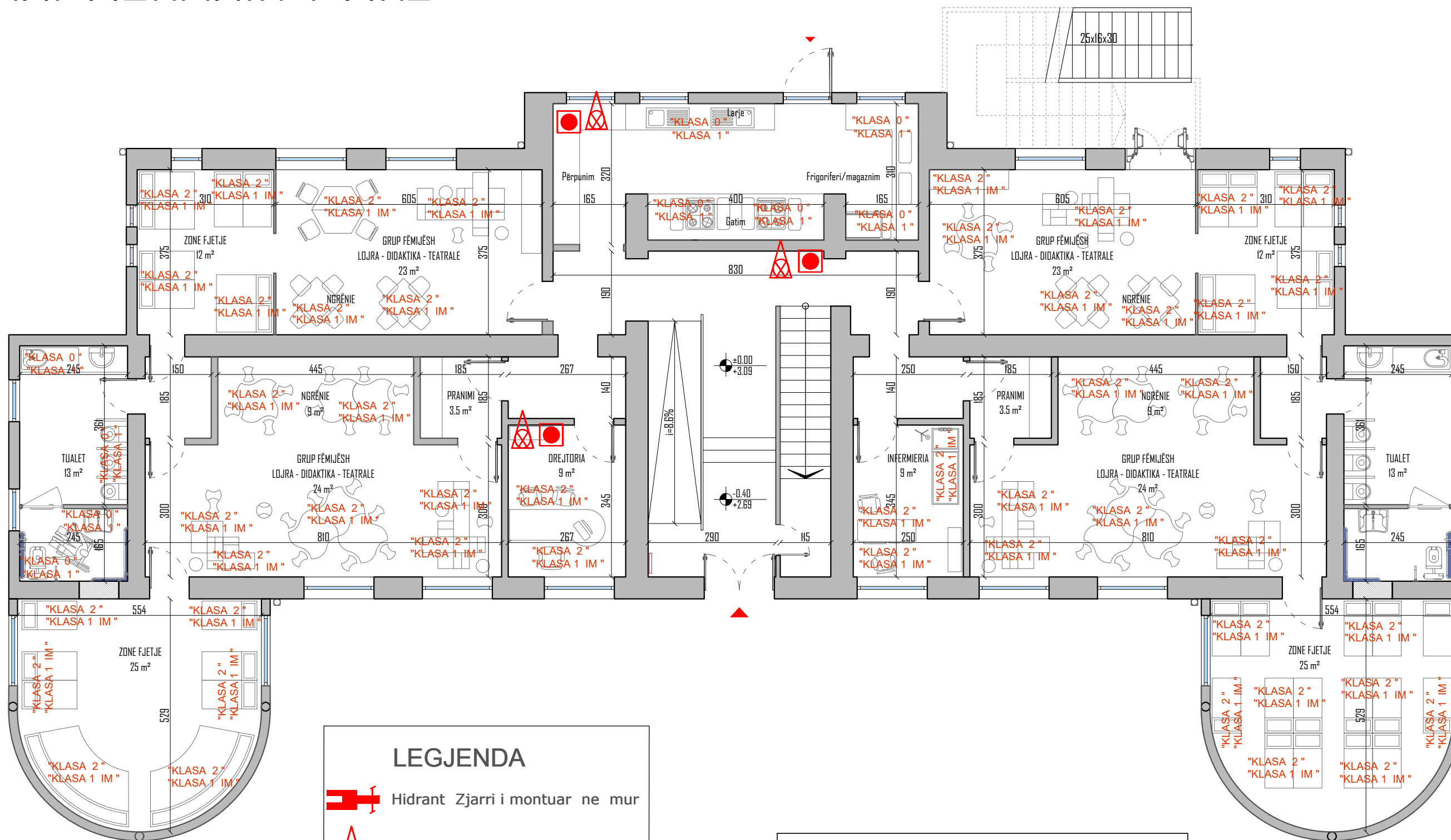

 Vleresimi i rezistences ( REI ) Zore  
 "Lartesia antizjarr" - Tipi a- 0-24 m  
 - Tipi b- 24-54 m  
 - Tipi c- 54-80 m  
 - Tipi d- mbi 80 m

KAPACITETI I DALJES -37.5 PERSONA  
 NUMRI I DALJEVE - NDERTESA TIPI a - 2 DALJE  
 KLASA E MATERIALEVE - KLASA 0-1  
 NDERKATET E NDARJET E MUREVE - REI 60  
 FILTRI I TYMIT , TE DYERVE - REI 60  
 KAFAZI I SHKALLES E HYRJJA - REI 90  
 SIPERFAQE E NJESISE SE SHERBIMIT =88.6M2








# PLANIMETRI KATI PERDHE

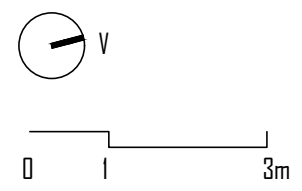
## PLANI MEKANIK I MKZ



### LEGJENDA

-  Hidrant Zjarri i montuar ne mur
-  Fikse zjarri me shkume
-  Vihet ne veprim Manual
-  Tub. xingato 2"MKZ
-  Kollone uji me Tub. xingato 2"MKZ

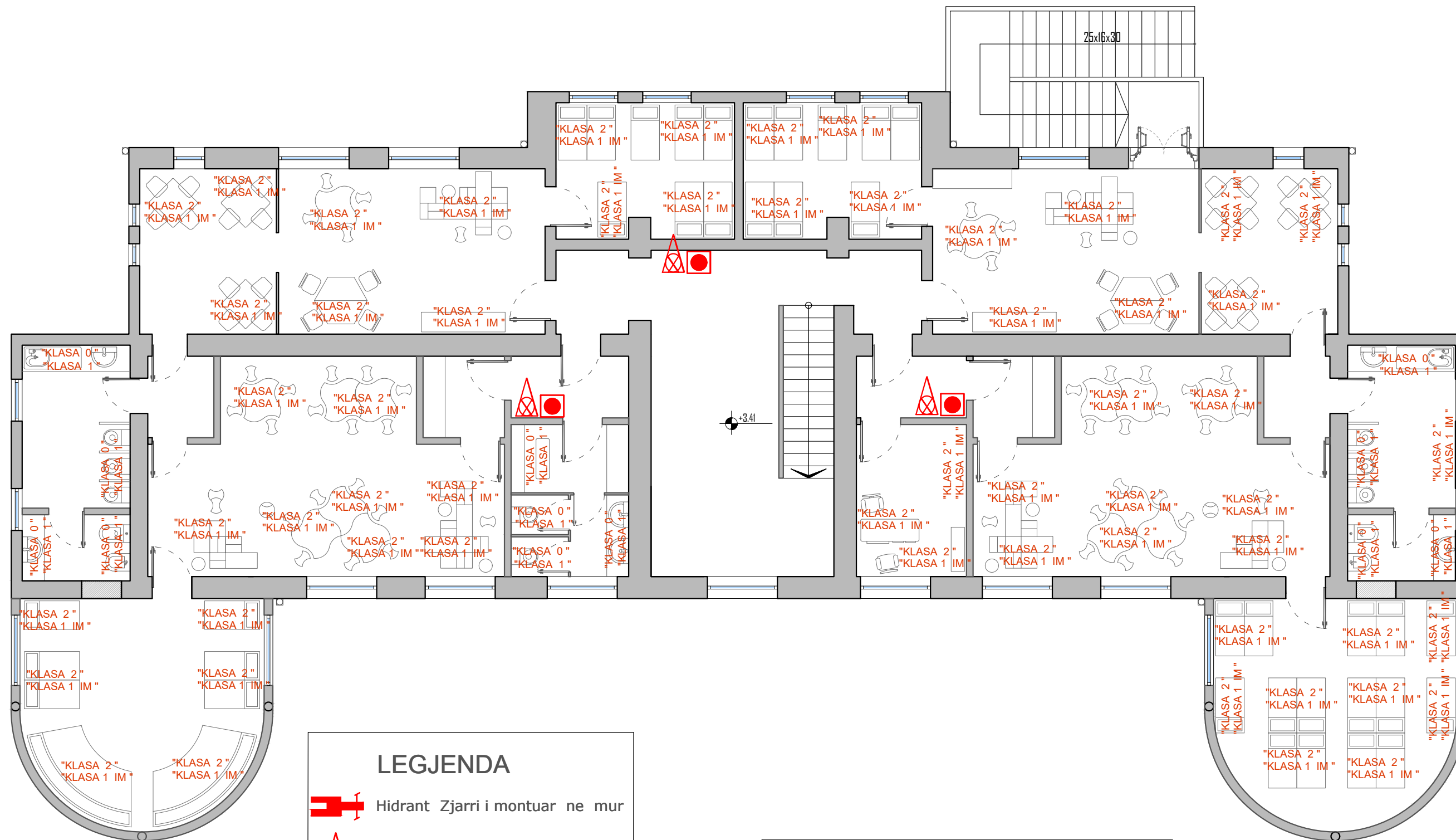
"KLASA 0" MATERIALE JO TE DJEGESHME  
 "KLASA 1" MATERIALE VESHTIRESISHT TE DJEGESHME  
 "KLASA 2" MATERIALE TE DJEGESHME  
 "KLASA 1 IM" MATERIALE DHE PAJISJE PER MOBILIM , QE KANE SI PERBERES LENDE TE TILLA SI DRU TE LAMINUAR PLUS PERBERES PAMBUKU , LESH ETJ SI DHE NENPRODUKTET E TYRE E QE PERDOREN PER MOBILIMET E BRENDSHME .










# PLANIMETRI KATI I PARE

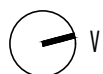
## PLANI MEKANIK I MKZ



### LEGJENDA

-  Hidrant Zjarri i montuar ne mur
-  Fikse zjarri me shkume
-  Vihet ne veprim Manual
-  Tub. xingato 2"MKZ
-  Kollone uji me Tub. xingato 2"MKZ

- "KLASA 0" MATERIALE JO TE DJEGESHME
- "KLASA 1" MATERIALE VESHTIRESISHT TE DJEGESHME
- "KLASA 2" MATERIALE TE DJEGESHME
- "KLASA 1 IM" MATERIALE DHE PAJSJE PER MOBILIM , QE KANE SI PERBERES LENDE TE TILLA SI DRU TE LAMINUAR PLUS PERBERES PAMBUKU , LSHI ETJ SI DHE NENPRODUKTET E TYRE E QE PERDOREN PER MOBILIMET E BRENDSHME.

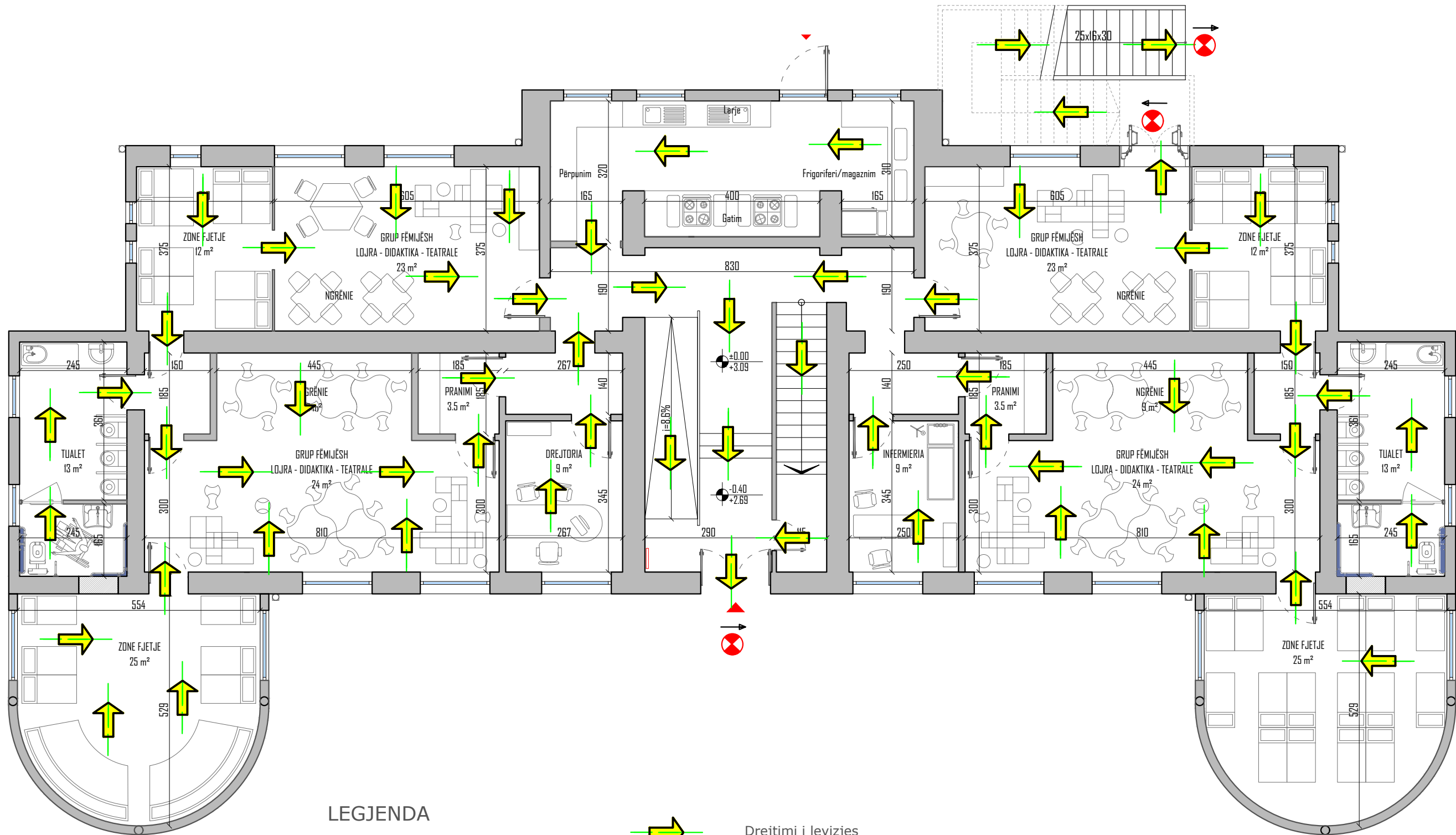


0 1 3m






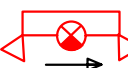
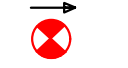



# PLANIMETRI KATI PERDHE

## PLANI I EVAKUIMIT NE RAST ZJARRI

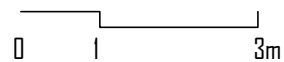


### LEGJENDA

-  Hidrant MKZ i varur ne mur
-  Vihet ne veprim Manual
-  Fikse zjarri me shkume
-  Kollone MKZ
-  Drejtimi i levizjes
-  Kombinim i tabelës dalese me drita te ndricuara
-  Tabele e daljes e ndricuar , ne nje ane te tabelës
-  Sherbim telefonik i arritshem

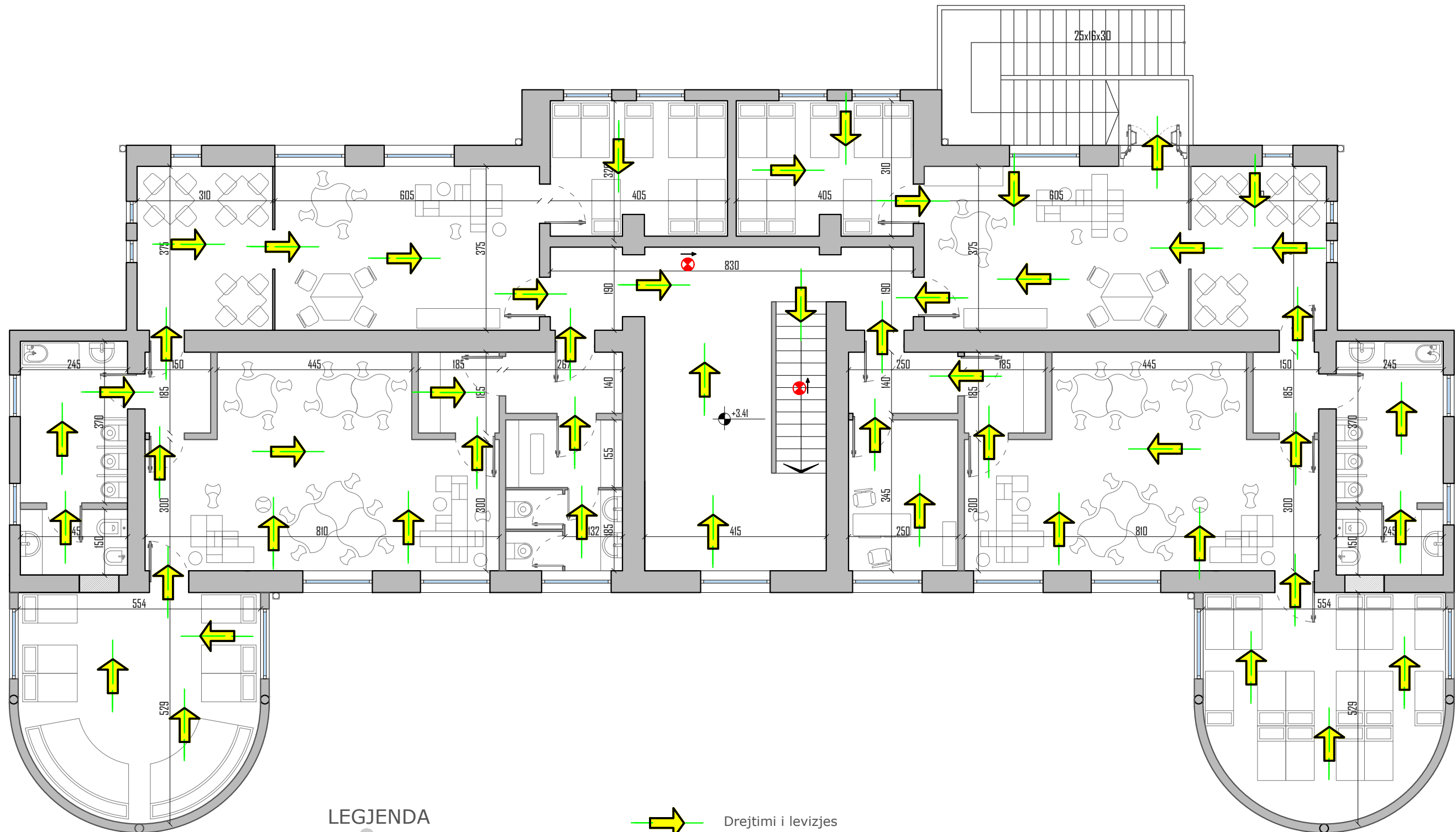
### NUMRAT E EMERGJENCES

ZJARRFIKSIJA	128
POLICIA	129
SPITALI	222631
AMBULANCA	URGJENCA 127











# PLANIMETRI KATI I PARE

## PLANI I EVAKUIMIT NE RAST ZJARRI



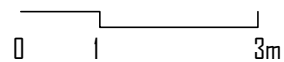
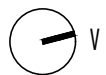
### LEGJENDA

-  Hidrant MKZ i varur ne mur
-  Vihet ne veprim Manual
-  Fikse zjarri me shkume
-  Kollone MKZ

-  Drejtimi i levizjes
-  Kombinim i tabeles dalese me drita te ndricuara
-  Tabele e daljes e ndricuar , ne nje ane te tabeles
-  Sherbim telefonik i arritshem

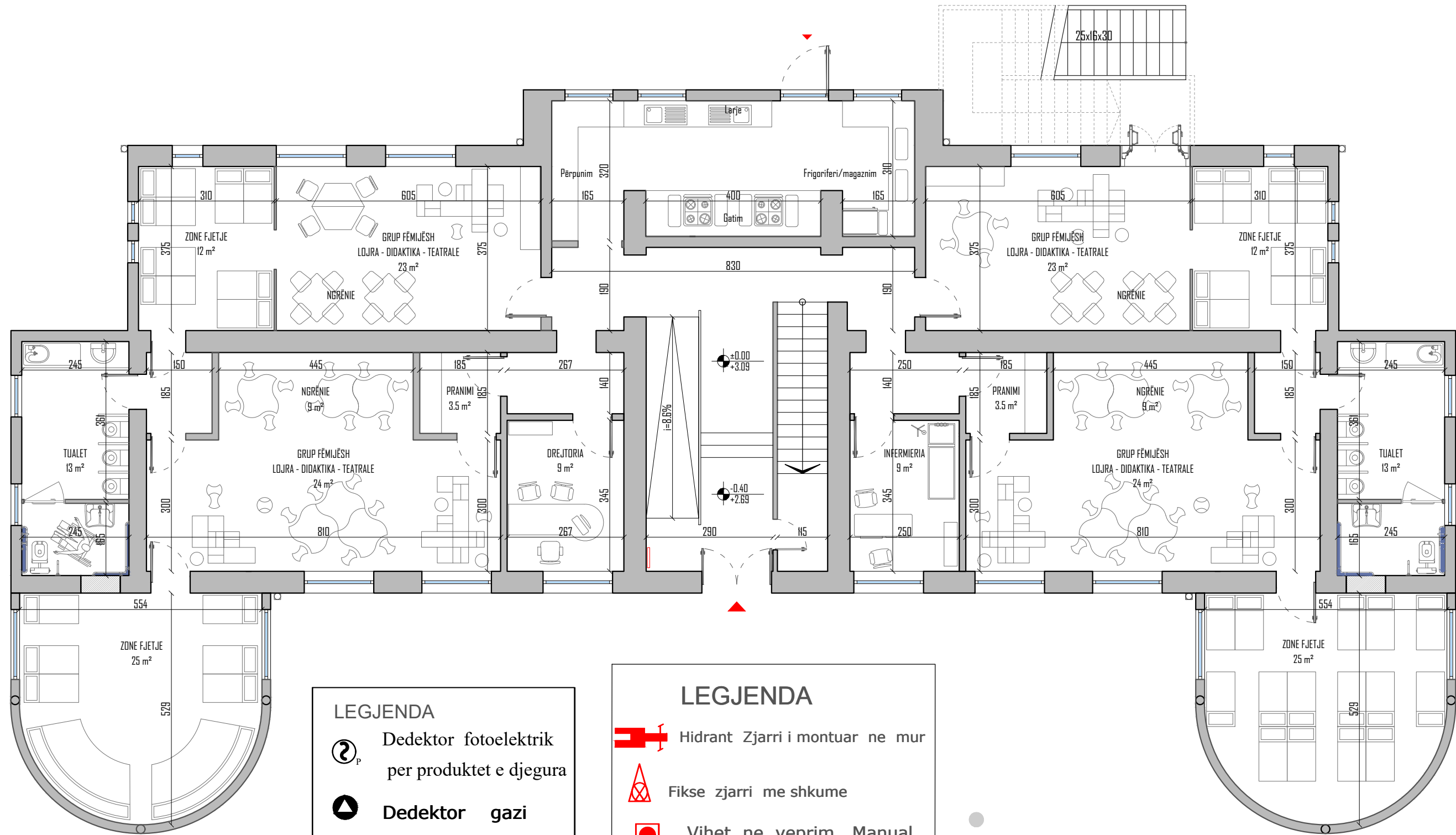
### NUMRAT E EMERGJENCES

ZJARRFIKSJA	128
POLICIA	129
SPITALI	222631
AMBULANCA	URGJENCA 127



# PLANIMETRI KATI PERDHE

## PLANI ELEKTRIK I MKZ



**LEGJENDA**

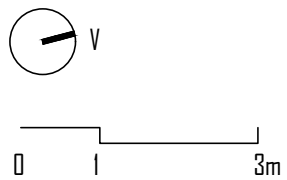
- Dedektor fotoelektrik per produktet e djegura
- Dedektor gazi
- Vrojtim ajri ASD
- Dedektor flake

**LEGJENDA**

- Hidrant Zjarri i montuar ne mur
- Fikse zjarri me shkume
- Vihet ne veprim Manual
- Tub. xingato 2"MKZ
- Kollone uji me Tub. xingato 2"MKZ

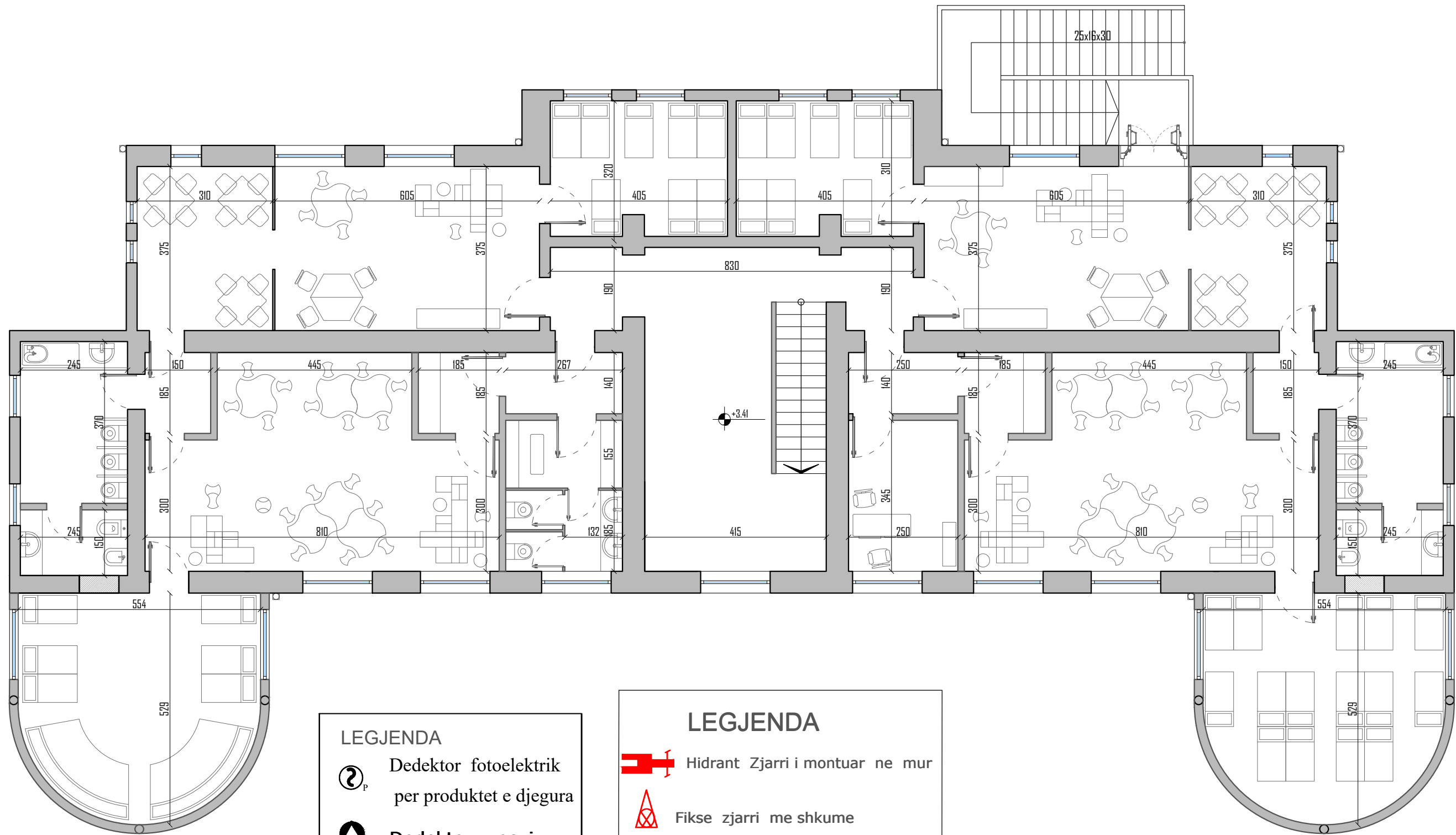
**Simbole te sherbimit zjarrfikes per kontrollin e panelit**

- Paneli i kontrollit per alarmin e zjarrit
- Sistemi i sinjalizimit te zjarrit
- Transmetuesi i alarmit te zjarrit



# PLANIMETRI KATI I PARE

## PLANI ELEKTRIK I MKZ



**LEGJENDA**

- Dedektor fotoelektrik per produktet e djegura
- Dedektor gazi
- Vrojtim ajri ASD
- Dedektor flake

**LEGJENDA**

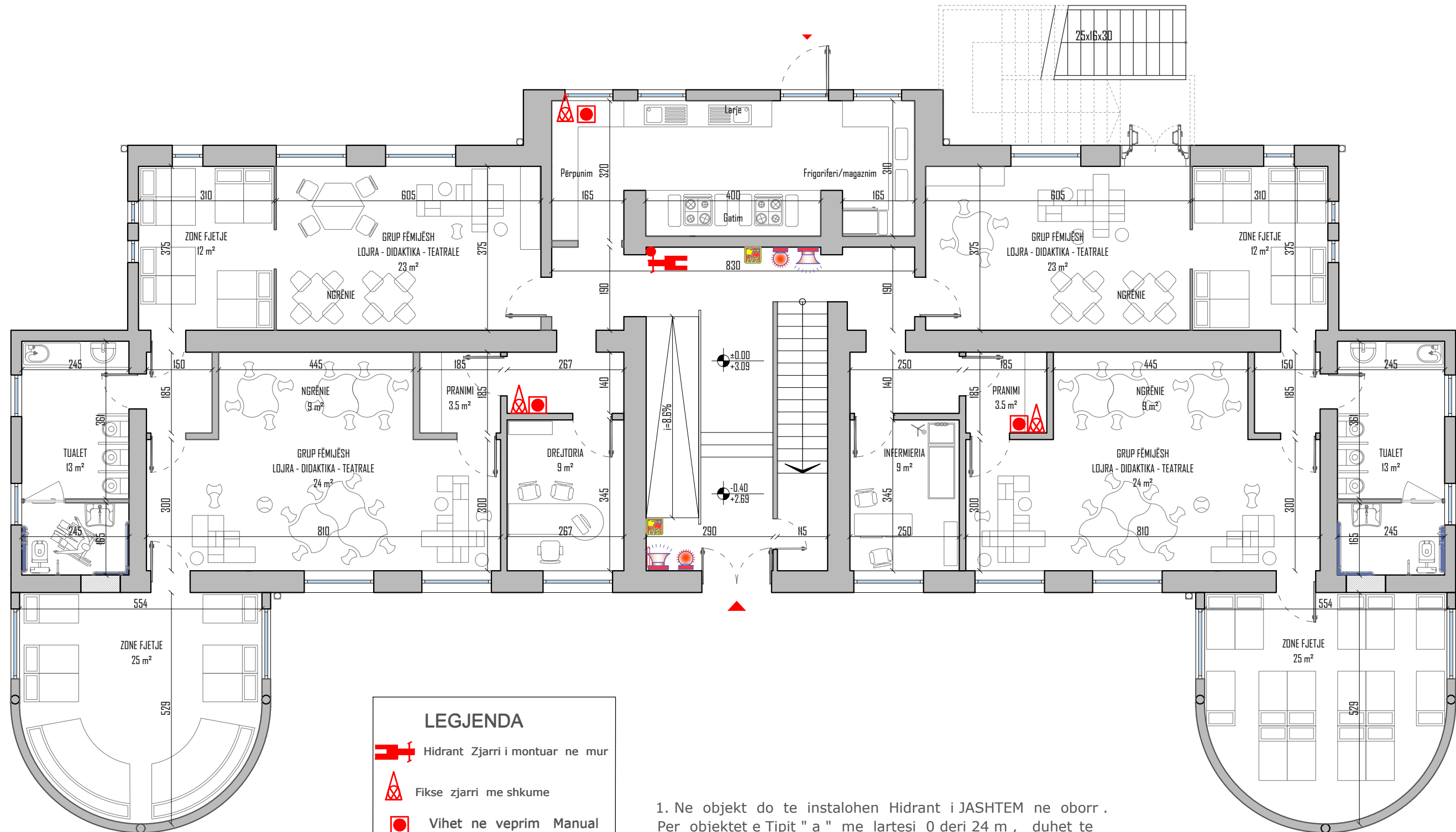
- Hidrant Zjarri i montuar ne mur
- Fikse zjarri me shkume
- Vihet ne veprim Manual
- Tub. xingato 2"MKZ
- Kollone uji me Tub. xingato 2"MKZ

**Simbole te sherbimit zjarrfikes per kontrollin e panelit**

- Paneli i kontrollit per alamin e zjarrit
- Sistemi i sinjalizimit te zjarrit
- Transmetuesi i alarmit te zjarrit

# PLANIMETRI KATI PERDHE

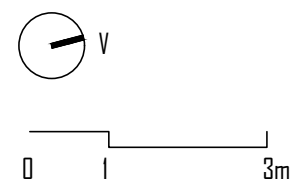
## PLANI HIDRIK I MKZ



**LEGJENDA**

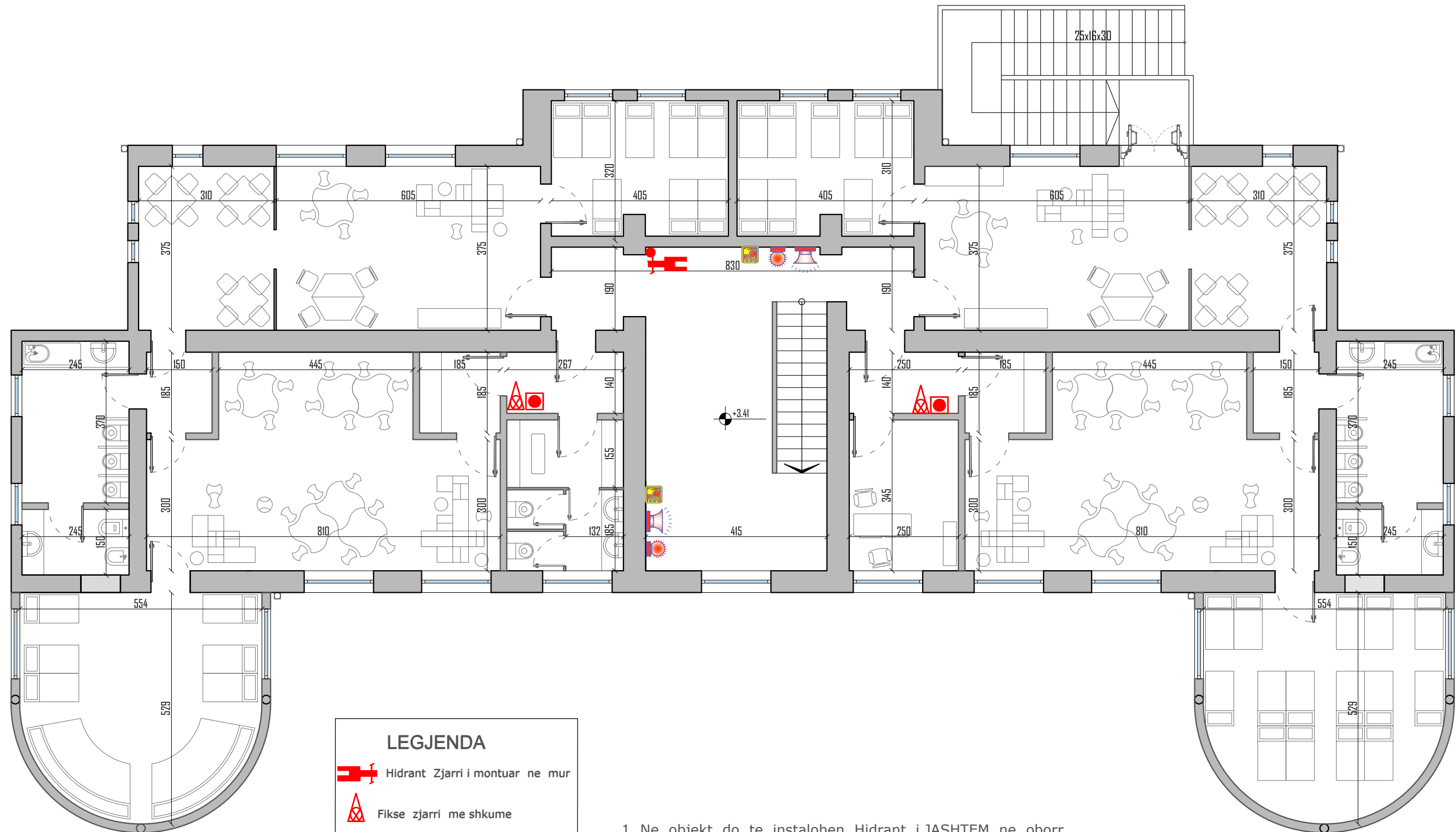
-  Hidrant Zjarri i montuar ne mur
-  Fikse zjarri me shkume
-  Vihet ne veprim Manual
-  Tub. xingato 2"MKZ
-  Kollone uji me Tub. xingato 2"MKZ
-  Buton alarmi
-  Pulsant alarmi

1. Ne objekt do te instalohen Hidrant i JASHEM ne oborr .  
Per objektet e Tipit " a " me lartesi 0 deri 24 m , duhet te vendosen Hidrante DN 20 .  
Çdo Hidrant duhet te pajiset me nje tub fresibel me gjatesi 20m .  
cdo njeri prej tyre duhet te siguroje nje pavaresi jo me te vogel se 60 "
2. Ne objekt do te instalohet dhe Fikse me shkume ose gaz C02 sipas llojit te lendes qe shkakton zjarrin
3. Fiksat e zjarrit do te vendosen ne pozicione lehtesisht te arritshme dhe te shikueshme nga nerezit . Fikesit portative duhet te kene kapacitet shuares jo me te vogel se 13 A -89B.



# PLANIMETRI KATI I PARE

## PLANI HIDRIK I MKZ



**LEGJENDA**

-  Hidrant Zjarri i montuar ne mur
-  Fikse zjarri me shkume
-  Vihet ne veprim Manual
-  Tub. xingato 2"MKZ
-  Kollone uji me Tub. xingato 2"MKZ
-  Buton alarmi
-  Pulsant alarmi

1. Ne objekt do te instalohen Hidrant i JASHEM ne obrorr .  
Per objektet e Tipit " a " me lartesi 0 deri 24 m , duhet te vendosen Hidrante DN 20.  
Çdo Hidrant duhet te pajiset me nje tub fresibel me gjatesi 20m .  
cdo njeri prej tyre duhet te siguroje nje pavaresi jo me te vogel se 60 "
2. Ne objekt do te instalohet dhe Fikse me shkume ose gaz CO2 sipas llojit te lendes qe shkakton zjarrin
3. Fiksat e zjarrit do te vendosen ne pozicione lehtesisht te arritshme dhe te shikueshme nga njerezit . Fikesit portative duhet te kene kapacitet shuares jo me te vogel se 13 A -89B.

