

**MIRATOI:**

**KRYETARI I BASHKISË  
ARTUR BUSHI**

# **PROJEKT ZBATIMI**

**OBJEKTI:**

**" SISTEMIM ASFALTIM I RRUGES "VOKSHI", LAGJIA  
KASTRIOTI (1), NJA FUSHE KRUJE, KRUJE.**

**PROJEKTUESI:**

**"ERALD G" shpk**

**INVESTITORI:**

**BASHKIA KRUJË**

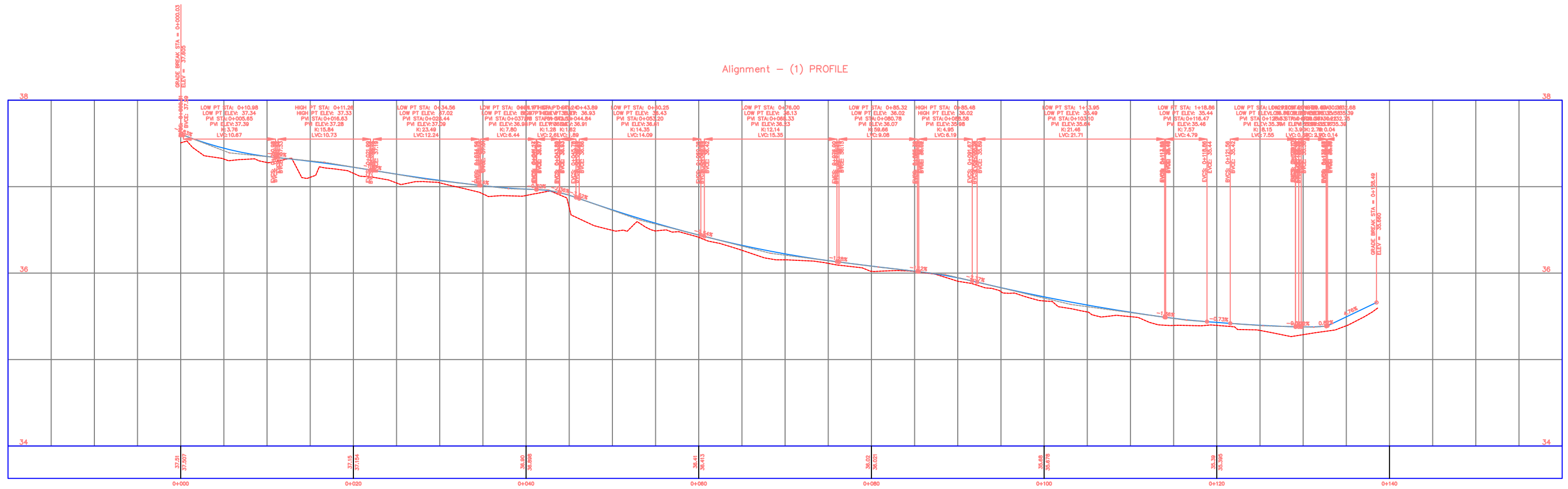
**KRUJË, 2024**

# RILEVIMI TOPOGRAFIK



 REPUBLIKA E SHQIPERISE BASHKIA KRUJE	PROJEKT ZBATIMI " SISTEMIM ASFALTIM I RRUGES "VOKSHI", LAGJIA KASTRIOTI (1), NJA FUSHE KRUJE, KRUJE.	PLANIMETRIA E PERGJITHSHME	PROJEKTUES : " ERALD G " SHPK	FLETA 01
			SHKALLA 1 : __	

# PROFILI GJATESOR



REPUBLIKA E SHQIPERISE  
BASHKIA KRUIJE

**PROJEKT ZBATIMI**  
" SISTEMIM ASFALTIM I RRUGES "VOKSHI",  
LAGJIA KASTRIOTI (1), NJA FUSHE KRUIJE, KRUIJE.

RILEVIMI

PROJEKTUES :	" ERALD G " SHPK
SHKALLA	1 : __

FLETA 01

202\_

# PLANIMETRIA E PERGJITHSHME



REPUBLIKA E SHQIPERISE  
BASHKIA KRUJE

"ERALD G" SHPK

PROJEKT ZBATIMI  
" SISTEMIM ASFALTIM I RRUGES "VOKSHI",  
LAGJIA KASTRIOTI (1), NJA FUSHE KRUJE, KRUJE.

PLANIMETRIA E PERGJITHSHME

PROJEKTUES : "ERALD G" SHPK

SHKALLA 1 : \_\_

FLETA 01

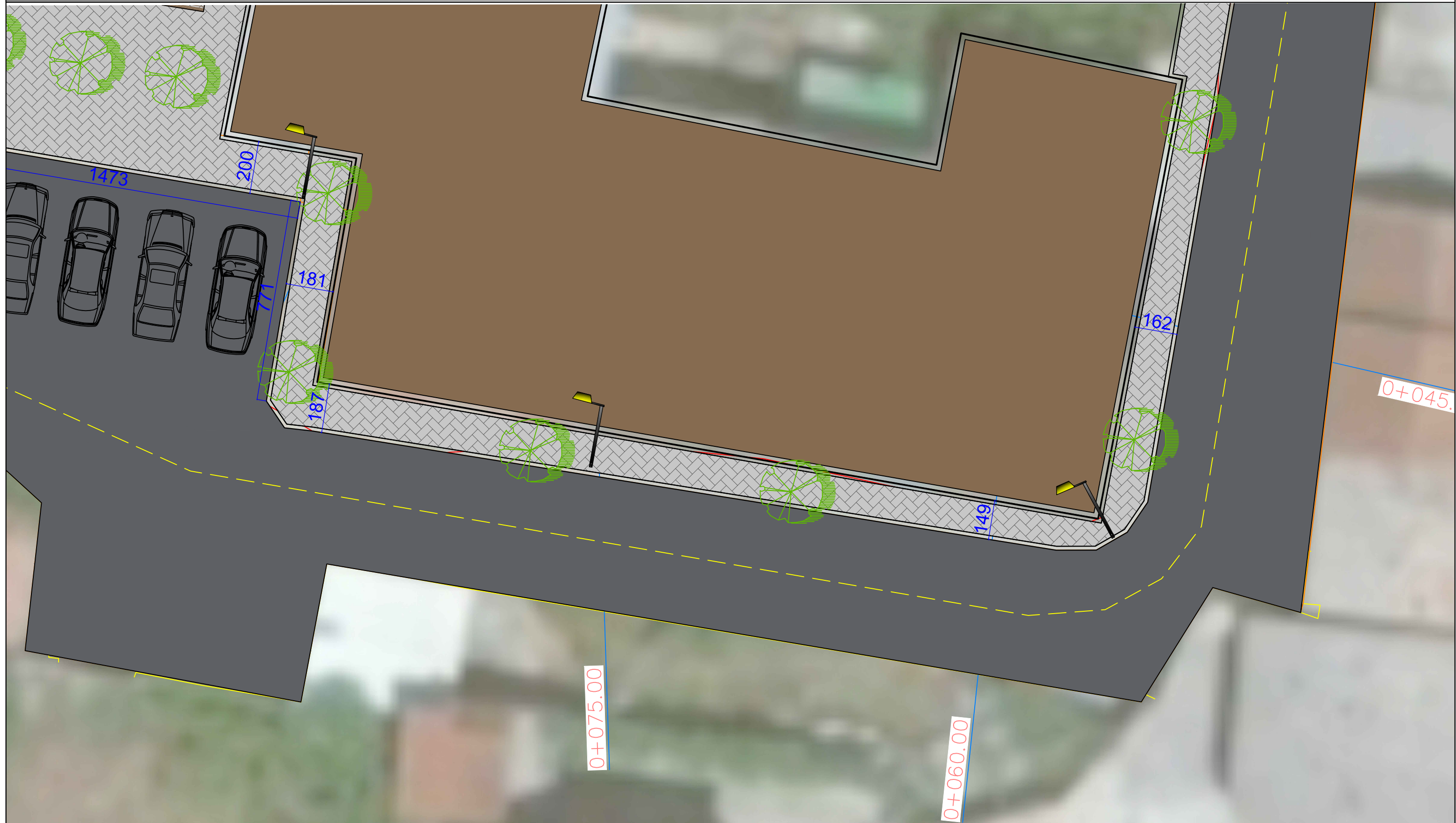
202\_

# PLANIMETRIA E PERGJITHSHME



 REPUBLIKA E SHQIPERISE BASHKIA KRUJE	PROJEKT ZBATIMI " SISTEMIM ASFALTIM I RRUGES "VOKSHI", LAGJIA KASTRIOTI (1), NJA FUSHE KRUJE, KRUJE.	PLANIMETRIA E PERGJITHSHME	PROJEKTUES : "ERALD G" SHPK	FLETA 01
			SHKALLA 1 : __	202_

# PLANIMETRIA E PERGJITHSHME



REPUBLIKA E SHQIPERISE  
BASHKIA KRUJE

"ERALD G" SHPK

PROJEKT ZBATIMI  
"SISTEMIM ASFALTIM I RRUGES "VOKSHI",  
LAGJIA KASTRIOTI (1), NJA FUSHE KRUJE, KRUJE.

PLANIMETRIA E PERGJITHSHME

PROJEKTUES : "ERALD G" SHPK

SHKALLA 1: \_\_

FLETA 01

202\_

# PLANIMETRIA E PERGJITHSHME



REPUBLIKA E SHQIPERISE  
BASHKIA KRUJE

"ERALD G" SHPK

PROJEKT ZBATIMI  
" SISTEMIM ASFALTIM I RRUGES "VOKSHI",  
LAGJIA KASTRIOTI (1), NJA FUSHE KRUJE, KRUJE.

PLANIMETRIA E PERGJITHSHME

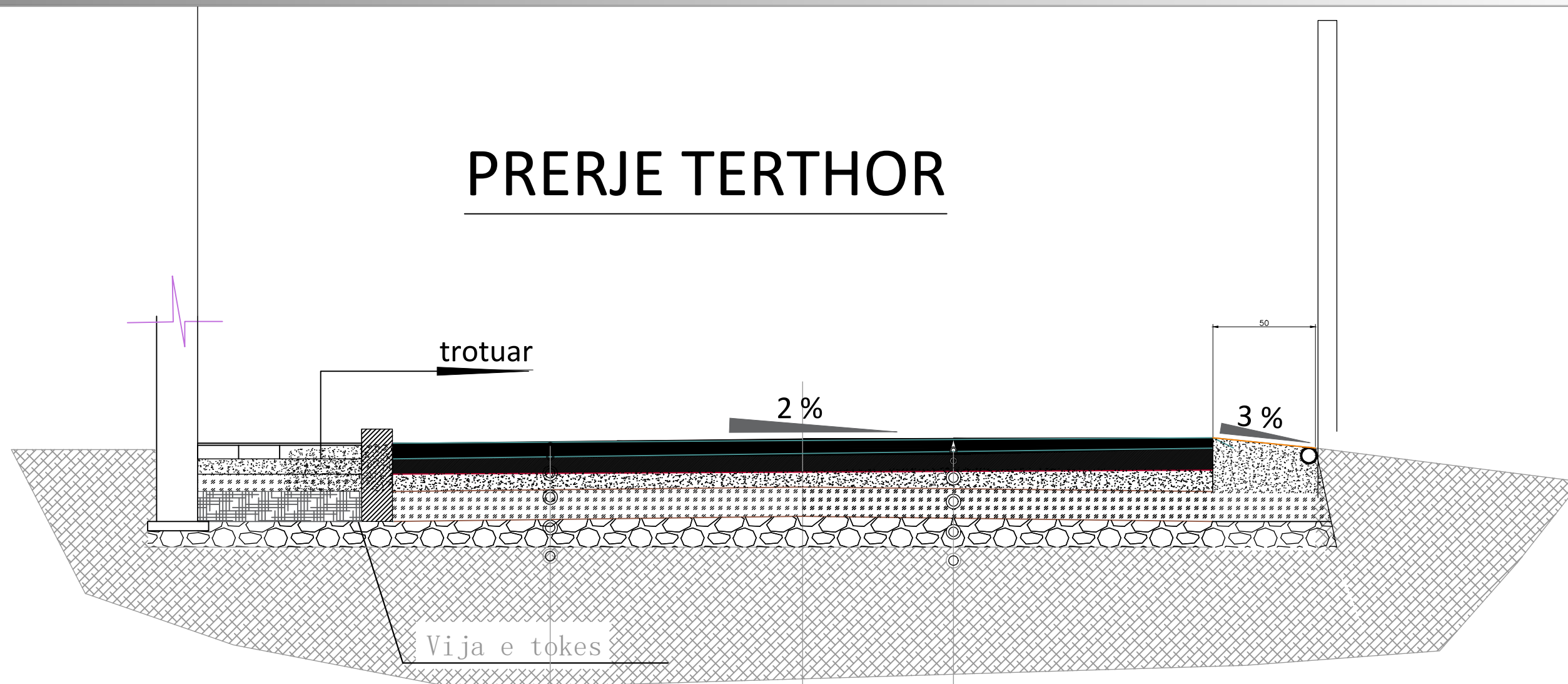
PROJEKTUES : "ERALD G" SHPK

SHKALLA 1: \_\_

FLETA 01

202\_

# PRERJE TERTHOR



- Asfaltobeton 4 cm e re
- Binder t=5cm e re
- Stabilizant t=10 cm e re
- Cakull t.mes=10cm e re
- Cakull ekzistues t.mes=20cm
- Dhe i ngjeshur
- Dhe natyral

AKSI I RRUGES

- Asfaltobeton 4 cm e re
- Binder t=5cm e re
- Stabilizant t=10 cm e re
- Cakull t.mes=10cm e re
- Cakull ekzistues t.mes=20cm
- Dhe i ngjeshur
- Dhe natyral



REPUBLIKA E SHQIPERISE  
BASHKIA KRUJE

"ERALD G" SHPK

PROJEKT ZBATIMI  
" SISTEMIM ASFALTIM I RRUGES "VOKSHI",  
LAGJIA KASTRIOTI (1), NJA FUSHE KRUJE, KRUJE.

DETAJE

PROJEKTUES : "ERALD G" SHPK

SHKALLA 1: \_\_

FLETA 01


202\_



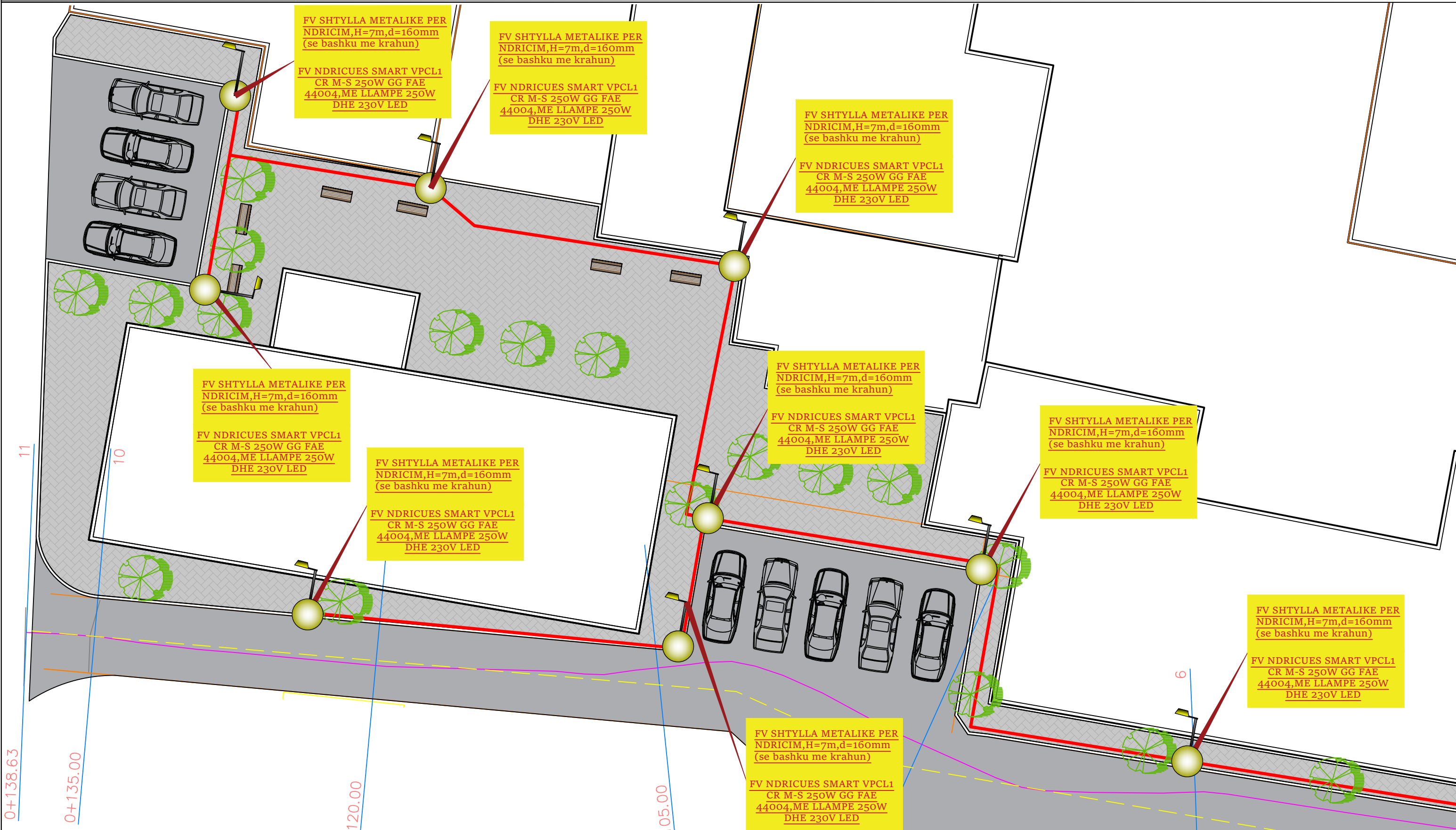


# PLANIMETRIA E NDRICIMIT



 REPUBLIKA E SHQIPERISE BASHKIA KRUJE	PROJEKT ZBATIMI " SISTEMIM ASFALTIM I RRUGES "VOKSHI", LAGJIA KASTRIOTI (1), NJA FUSHE KRUJE, KRUJE.	PLANIMETRIA E PERGJITHSHME	PROJEKTUES : "ERALD G" SHPK	FLETA 01
			SHKALLA 1 : __	202_


# PLANIMETRIA E NDRICIMIT



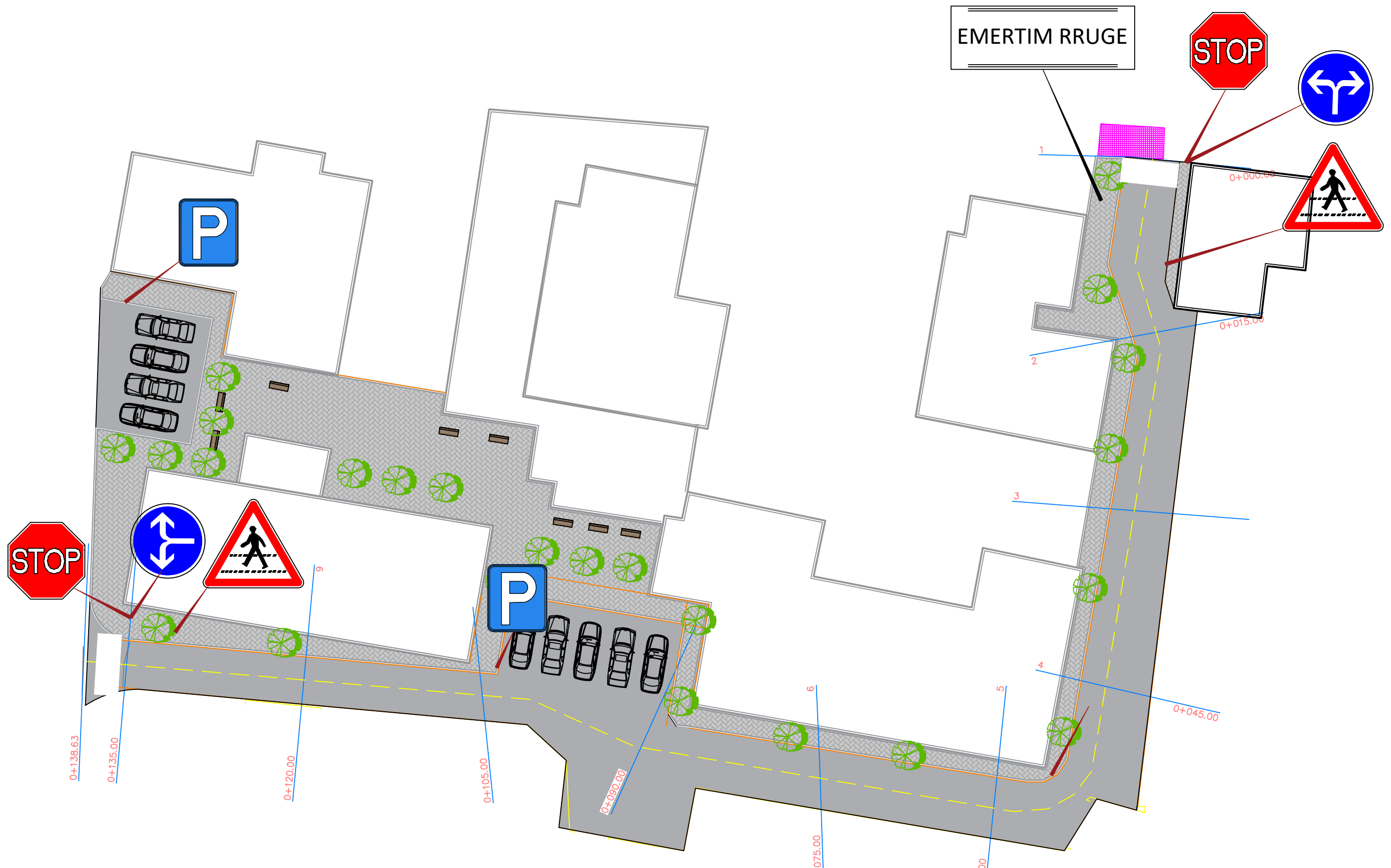
 REPUBLIKA E SHQIPERISE BASHKIA KRUJE	PROJEKT ZBATIMI " SISTEMIM ASFALTIM I RRUGES "VOKSHI", LAGJIA KASTRIOTI (1), NJA FUSHE KRUJE, KRUJE.	PROJEKTUES : " ERALD G " SHPK	FLETA 01
		SHKALLA 1 : _	202_


# PLANIMETRIA E NDRICIMIT



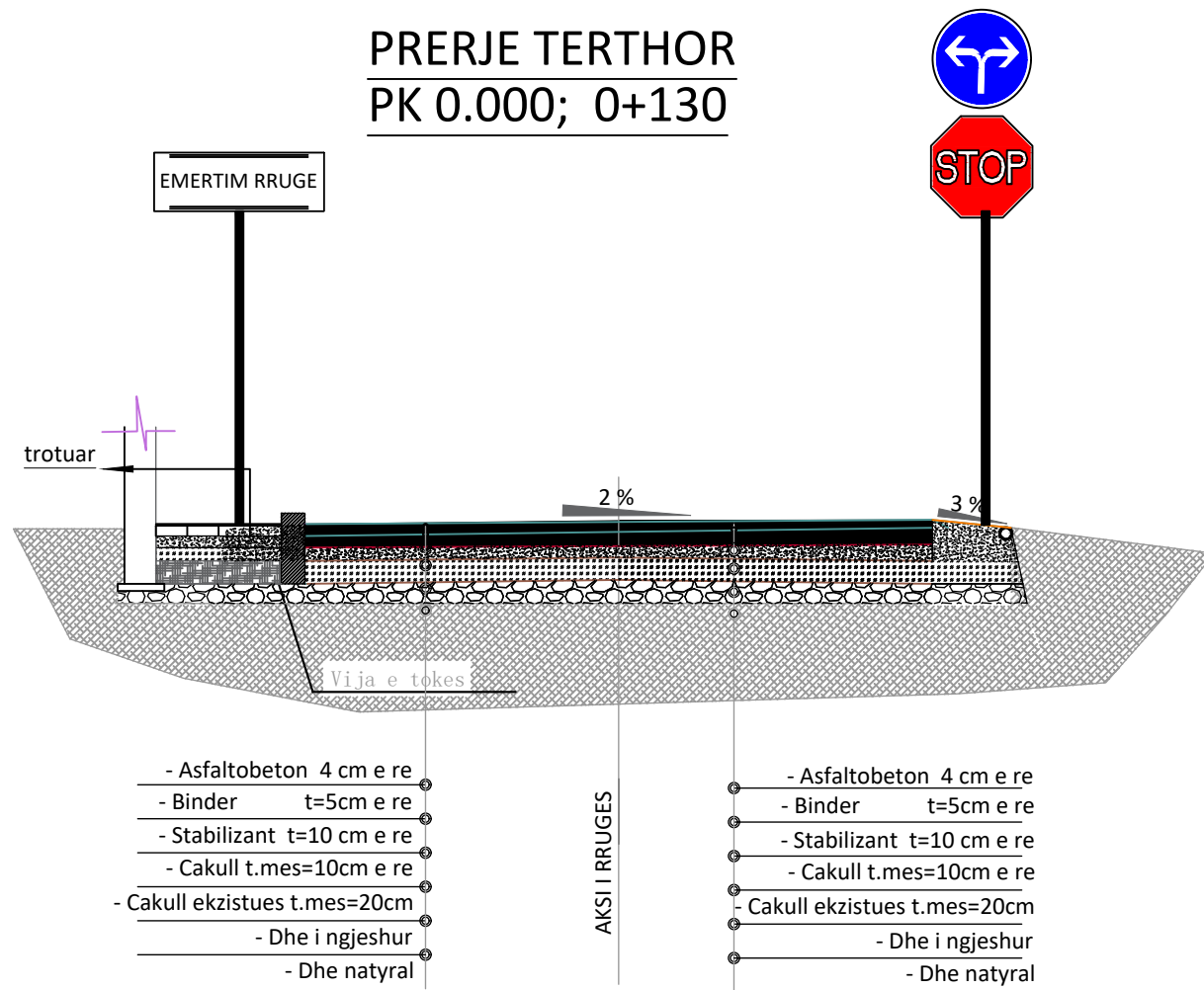
 REPUBLIKA E SHQIPERISE BASHKIA KRUJE	PROJEKT ZBATIMI " SISTEMIM ASFALTIM I RRRUGES "VOKSHI", LAGJIA KASTRIOTI (1), NJA FUSHE KRUJE, KRUJE.	PROJEKTUES : "ERALD G" SHPK	FLETA 01
		SHKALLA 1 : __	202_

# PLANIMETRIA E SINJALISTIKES

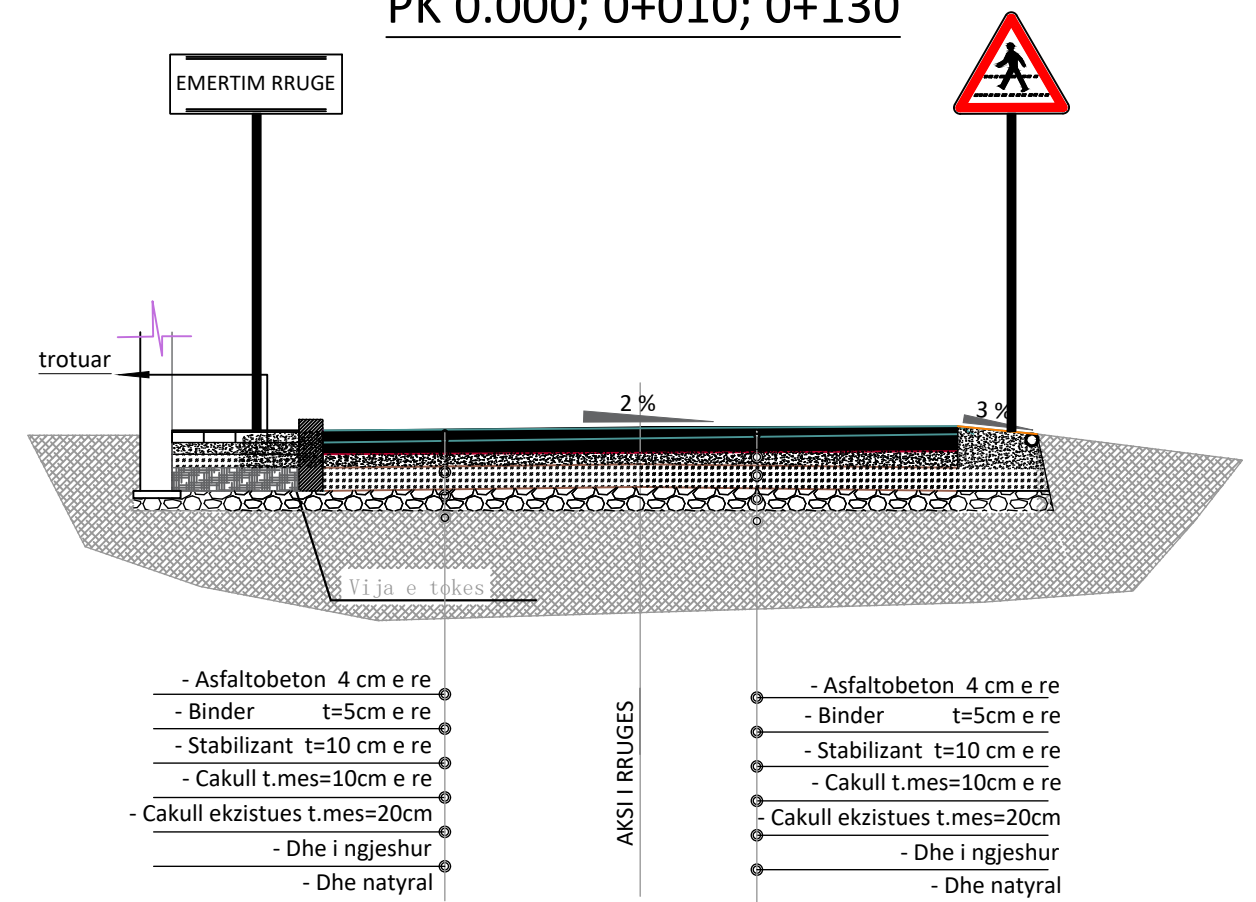


 REPUBLIKA E SHQIPERISE BASHKIA KRUJE	PROJEKT ZBATIMI " SISTEMIM ASFALTIM I RRUGES "VOKSHI", LAGJIA KASTRIOTI (1), NJA FUSHE KRUJE, KRUJE.	PLANIMETRIA E PERGJITHSHME	PROJEKTUES : "ERALD G" SHPK	FLETA 01
			SHKALLA 1 : __	202_

## PRERJE TERTHOR PK 0.000; 0+130



## PRERJE TERTHOR PK 0.000; 0+010; 0+130



REPUBLIKA E SHQIPERISE  
BASHKIA KRUJE

"ERALD G" SHPK

PROJEKT ZBATIMI  
" SISTEMIM ASFALTIM I RRUGES "VOKSHI",  
LAGJIA KASTRIOTI (1), NJA FUSHE KRUJE, KRUJE.

SINJALISTIKA

PROJEKTUES : "ERALD G" SHPK

SHKALLA 1: \_\_

FLETA 01

202\_

## PROHIBIT SIGN SHENJA PARANDALUES

Limit shpejtësie Rrethi: e kuqe reflektive Simboli: e zeze reflektive	Speed limit sign Circle: red reflective Sign: black reflective	Ndalim parakalimi Cepi & sfondi: e bardhe reflektive Rrethi: e kuqe reflektive Simboli: e zeze dhe kuqe reflektive	Overtrake prohibit Edge & background: white reflective Circle: red reflective Sign: black & red reflective
---	--	---	---

Small	A	B	C	D
	60	20	2	50

Small	C	D
	0.8	40

Small	C	D	E
Normal	1	60	7.5

Small	A	C	E	R
Normal	90	1.5	8	4.5

Small	A	B	C	D	R
Normal	58	0.3	0.6	18	2

Normal	C	D	E	H	L	M
	1.5	1	22	40	150	18
	N	R1	R2	R3	P	S
	15.5	8	13	2	6.5	38

Normal	A	B	C	D	R
	90	135	1.8	0.8	7

Small	C	D	E
	0.8	40	5

A	B	C	D
60	20	2	50

A	C	E	R
60	1	5.5	3

A	C	E	R
60	1	5.5	3

Normal	C	D	E	H	L	M
	1.5	1	22	40	150	18
	N	R1	R2	R3	P	S
	15.5	8	13	2	6.5	38

## ROAD MARKING ACCORDING ARDM 6 VJEZIMI I RRUGEVE SIPAS ARDM 6

STRIP OF MARGIN OF THE ROAD  
VJEZIMI NE KUFJETE E RRUGES  
Type "Continuous"  
Tipi "Vazhduar"

Centre line or lane line for speed <50 km/h  
Vjezimi i aksit qendror ose vijezimi i korsit për shpejtësi <50 km/h

Warning line for use at junctions, bends or other hazards  
Lajçi paralajmëruese tek njëjt, kthesat dhe pikat e tjera të rrezikshme

Edge of carriageway marking at junctions or lay-bys  
Vijezimi tek cepi i karroshtabës, tek njëjt ose vendndodhjet anësore.

Guideline for vehicle travelling through a junction.  
Normally used at complex junction to guide traffic.  
Kufizuesi për automobilet që detyrohet të kalojnë sipër një njëjt.  
Zakonisht përdoret tek njëjt komplekse.

## STANDARD SIGN SHENJAT STANDARDE

SIGN FASTENING  
FIKSIMI I TABELAVE

ROAD EDGE INDICATOR  
INDIKATORI I CEPIT TE RRUGES

REFLECTIVE DELINEATORS

## WARNING SIGN

Triangle: red reflective

Background: red reflective

Symbol: black

SHENJAT PARANDALUESE

Trekendeshi: e kuqe reflektive

Sfondi: e kuqe reflektive

Simboli: zeze

Normal	A	B	C	D	R
	90	135	1.8	0.8	7

## INFORMATION SIGN TABELAT INFORMUESE

## COMPLEMENTARY SIGN TABELAT PLOTESUESE

Sign: white reflective

Background: black

Tabela: e bardhe reflektive

Sfondi: e zeze

Chevron signs one direction  
Shenja Chevron ne nje drejtim

## ADDITIONAL PANEL TABELAT SHITESE

Background: white reflective

Sfondi: e bardhe reflektive

Chevron signs  
Shenja Chevron

## ARROW SIGN TABELAT SHIGJETE

Background: green reflective

Letter: black

Sfondi: jeshile reflektive

Teksti: e zeze

## HORIZONTAL SIGN SINJALE HORIZONTALE

CONTINUOUS  
E PANDERPRERE

CENTRE LINE OR LANE LINE FOR SPEED <50 KM/H  
PER NDARJEN E DREJTIMEVE TE LEVIZJES DHE KORSIVE

40-80 km/ore

WARNING LINE FOR USE AT JUNCTIONS, BENDS OR OTHER HAZARDS  
PER SHIRITA QE PARALAJMEROJNE AFRIMIN E NJE SHIRITI TE VAZHDUESHEM

EDGE OF CARRIAGEWAY MARKING AT JUNCTIONS OR LAY-BYS  
PER SHIRITA ANESORE PER NDERPRERJEN E SHIRITAVE TE VAZHDUESHEM

GUIDELINE FOR VEHICLE TRAVELLING THROUGH A JUNCTION. NORMALLY USED AT COMPLEX JUNCTION TO GUIDE TRAFFIC  
PER SHIRITA DREJTUESE NE KRYQEZIME